

# Community Climate Change Adaptation Plan (CCCAP)

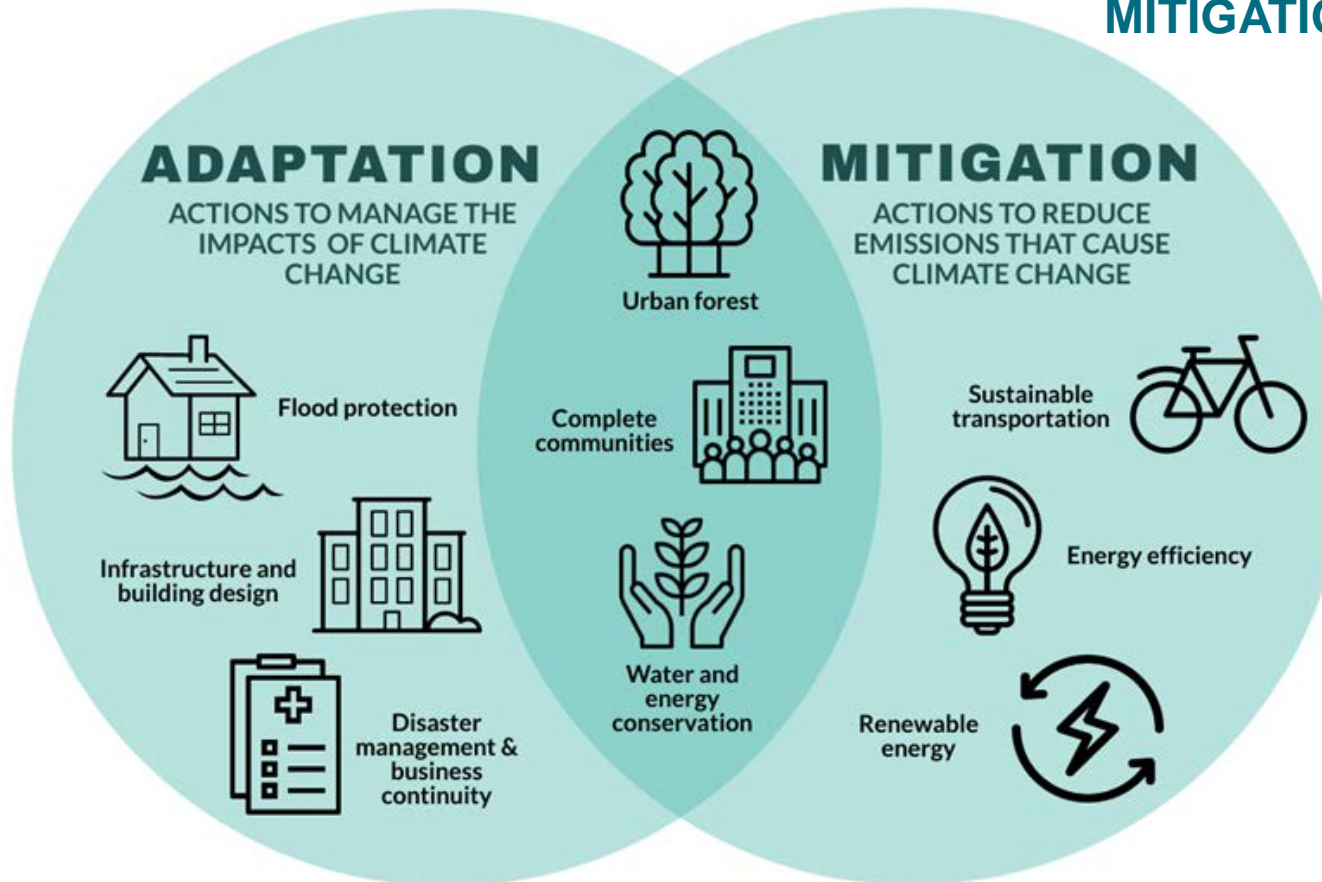
Greater | Grand  
**Sudbury**™

2019-2027 Strategic Plan Priorities

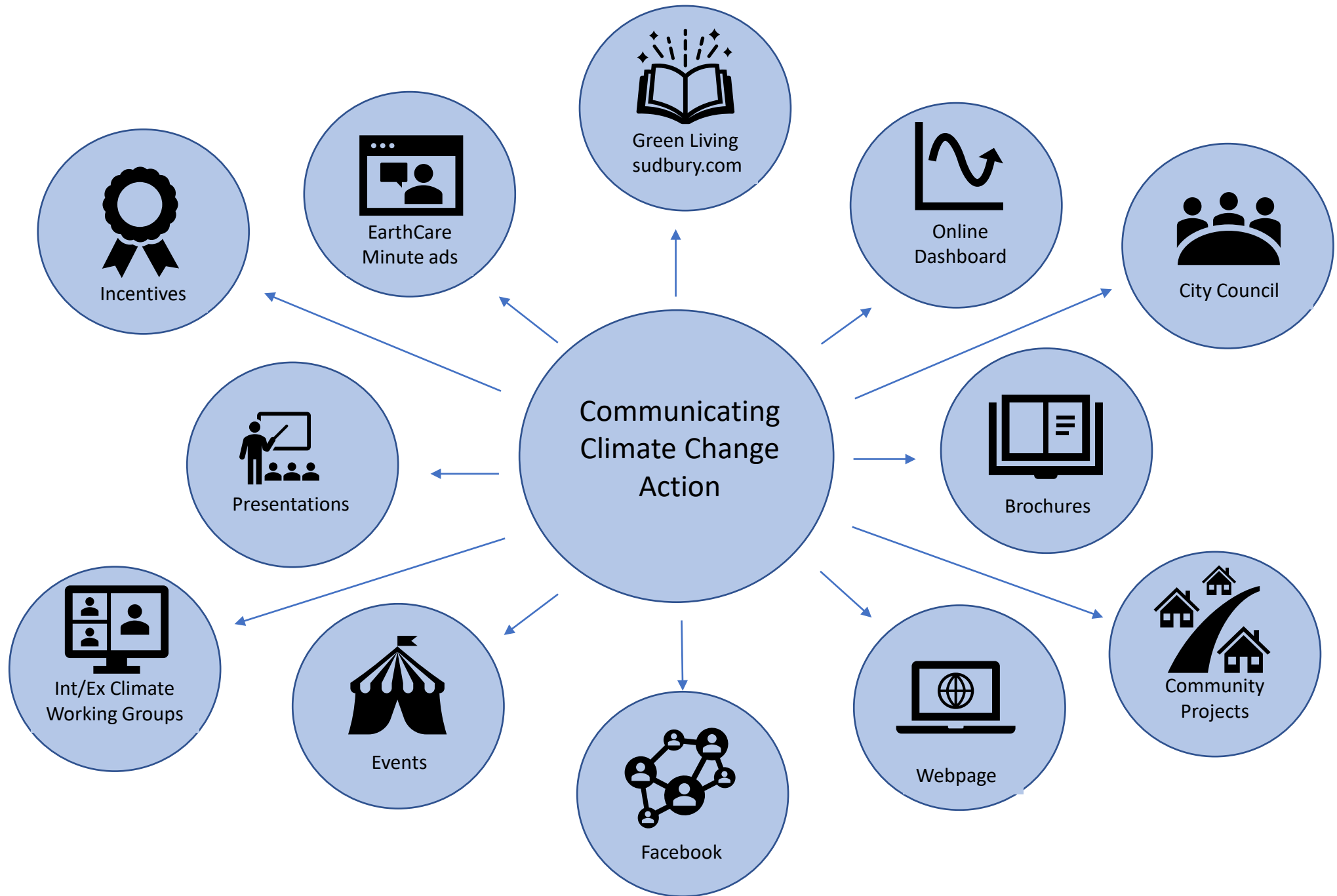


# Adaptation vs. Mitigation

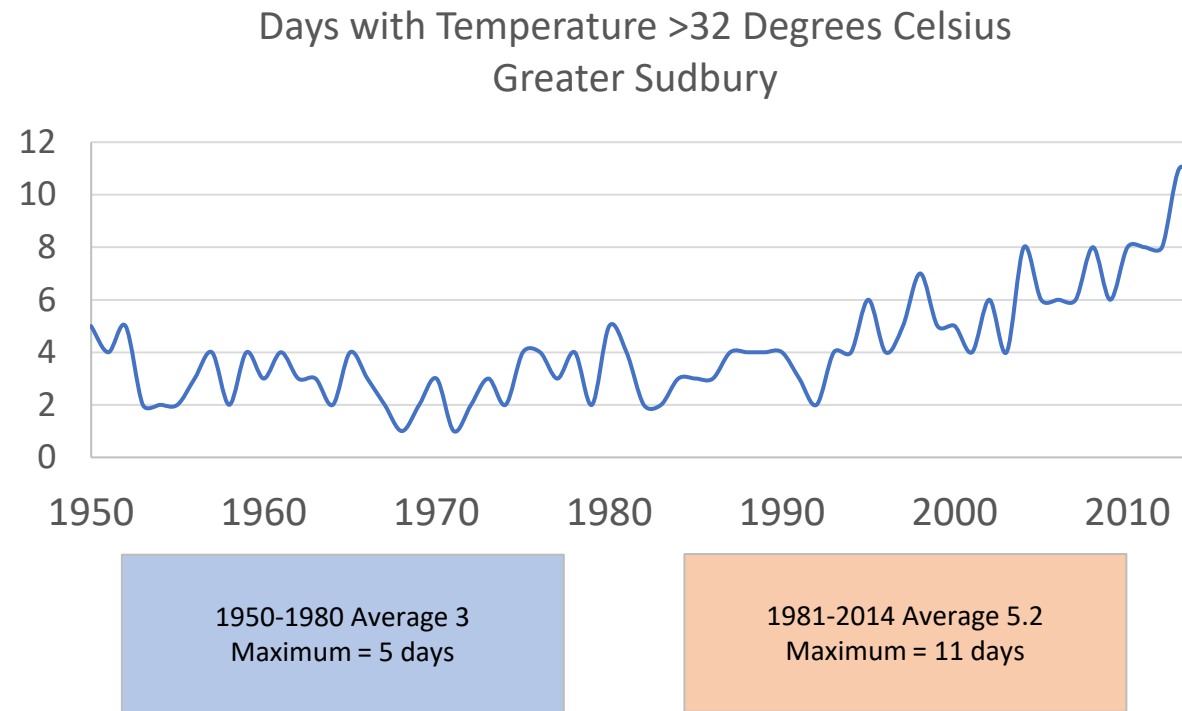
**ADAPTATION** = managing the unavoidable  
**MITIGATION** = avoiding the unmanageable



Source: ICLEI Canada, 2019



# Greater Sudbury historical data



Data source: <https://climatedata.ca/>

*Summary of Climactic Changes for Greater Sudbury under RCP8.5. Source: Climate Atlas of Canada  
[www.climateatlas.ca](http://www.climateatlas.ca)*

**Climate Indices**

	Baseline (1976-2005)	2021-2050	2051-2080
• Mean Annual Temperature	4.3°C	6.5°C	8.8°C
• Days Warmer than 30°C	6 days/year	18 days/year	39 days/year
• Date of Last Spring Frost	May 13	May 1	April 21
• Mean Annual Precipitation	848 mm	904 mm	938 mm





- Climate Change impacts include:
  - Health impacts (heat, air pollution)
  - Wildfires
  - Pest and disease epidemics
  - Lakes have more ice-free days
  - Extreme weather (storms, flooding, power outages)
  - Impacts on food production
  - Impacts to economic sectors



## Freak summer storm takes residents by surprise

A freak summer storm Sunday evening that took much of Greater Sudbury by surprise is keeping residents, city workers and emergency personnel busy.

Sudbury.com Staff  
Jul 27, 2009 1:20 AM



Hyundai dealership on The Kingsway July

## Pond Hockey Festival gets the 'boot' from Lake Ramsey

Ice conditions on Lake Ramsey unsuitable for second year in a row

Sudbury.com Staff  
Jan 31, 2017 6:00 PM



## ONTARIO: A downburst slammed into Sudbury last night. And it was bad

The storm knocked out hydro, sent trees toppling onto cars and generally made life very wet for Sudburians

Sudbury.com Staff  
Jul 10, 2018 1:09 PM



# Difference between Coping and Adapting

## Coping

- Aim is to 'bounce back'
- Short-term and immediate
- Oriented towards survival
- Not continuous
- Motivated by crisis
- Often degrades resources base
- Prompted by lack of alternatives

## Adapting

- Aim is to 'bounce forward'
- Oriented towards longer term livelihoods and security
- A continuous process
- Results are sustained
- Uses resources efficiently and sustainably
- Involves planning
- Combines old and new strategies and knowledge





# Six Themes

1. **Built Environment** (e.g., municipal infrastructure, roads, bridges, pump stations, buildings, power lines)
2. **Natural Environment** (e.g., natural resources, ecosystems, wetlands, trails, wildlife)
3. **Local Economy** (e.g., local businesses, tourism, agriculture)
4. **Cultural and Social Cohesion** (e.g., building community resilience through schools, community centres, faith and cultural centres, volunteerism)
5. **Community Health and Well-Being** (e.g., disaster and emergency management, health and medical care, food access, evacuation, and public communications)
6. **Enabling Actions** (e.g., inform and empower community, research and new technologies, integration of climate change adaptation)



# City of Greater Sudbury Climate Action

Together, the Community Energy and Emissions Plan (CEEP) and Community Climate Change Adaptation Plan (CCCAP) will be Greater Sudbury's guiding documents on climate action.



# Next Steps

- Staff will develop a five-year climate action plan that includes a communications strategy with aid from the Climate Action Resource Team (CART)



# Greater | Grand Sudbury™

[greater Sudbury.ca](http://greater Sudbury.ca)

