

City of Greater Sudbury
**Cultural Hub at Tom
Davies Square**

CITY COUNCIL UPDATE
09.17.2024

Teeple Architects ^{INC.}



PROCESS | Where We Are



WHAT WE HEARD | Ongoing Community Engagement

FROM INDIGENOUS CONSULTATION:

INTEGRATION OF LOCAL MATERIALS

ACCESSIBLE AND WELCOME TO ALL

CURVED LINES FOR FLOW OF ENERGETIC SPIRITS

INCORPORATION OF INDIGENOUS LANGUAGE

OUTDOOR SPACES TO CREATE CONNECTION TO THE LAND

HARVEST MOTHER EARTH'S GIFTS

REFLECT ON RICH HISTORY

SUSTAINABLE DESIGN

FROM PROJECT PARTNERS:

THIRD SPACE

OPEN TO ALL

USEFUL / USEABLE / DESIRABLE

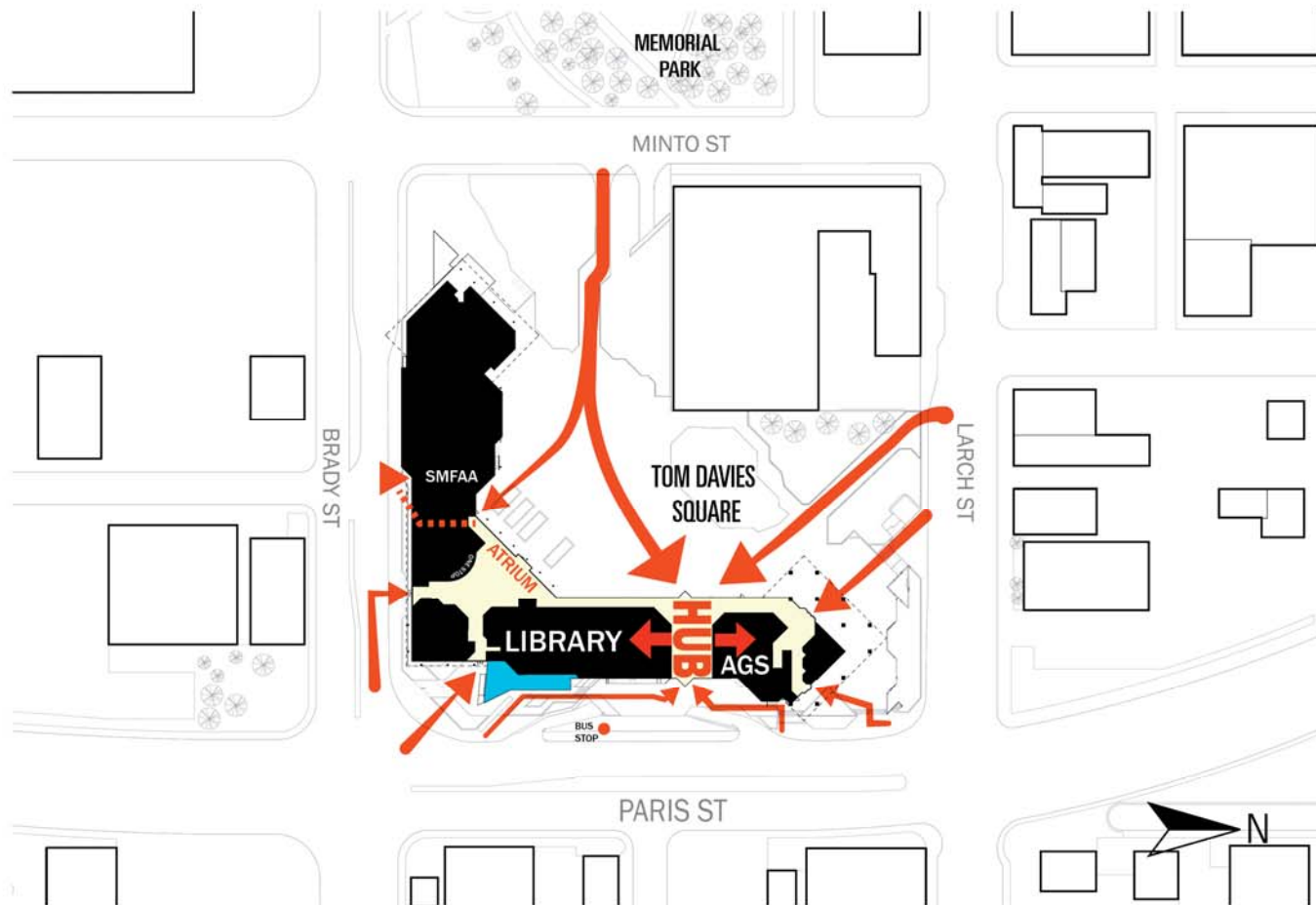
A BEACON

WELCOME IN EVERY LANGUAGE

A WHOLE CIVIC PLACE

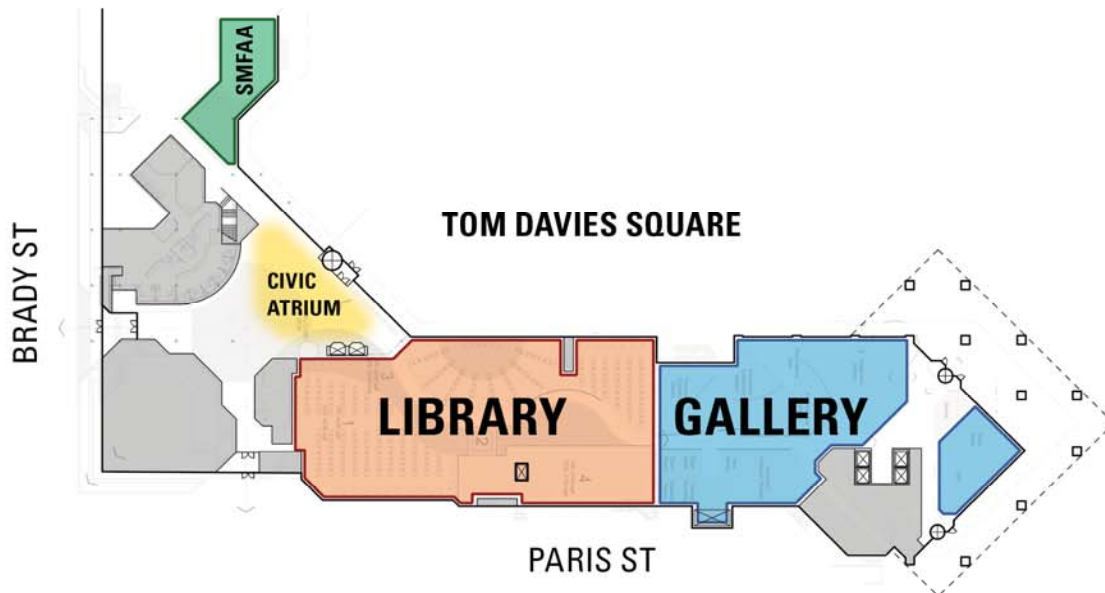
PROTECTED SPACE

DESIGN CONCEPT



Transform Civic Place into a Welcoming and Dynamic Cultural Hub that is Accessible to ALL.

PROJECT HISTORY | TEST FIT



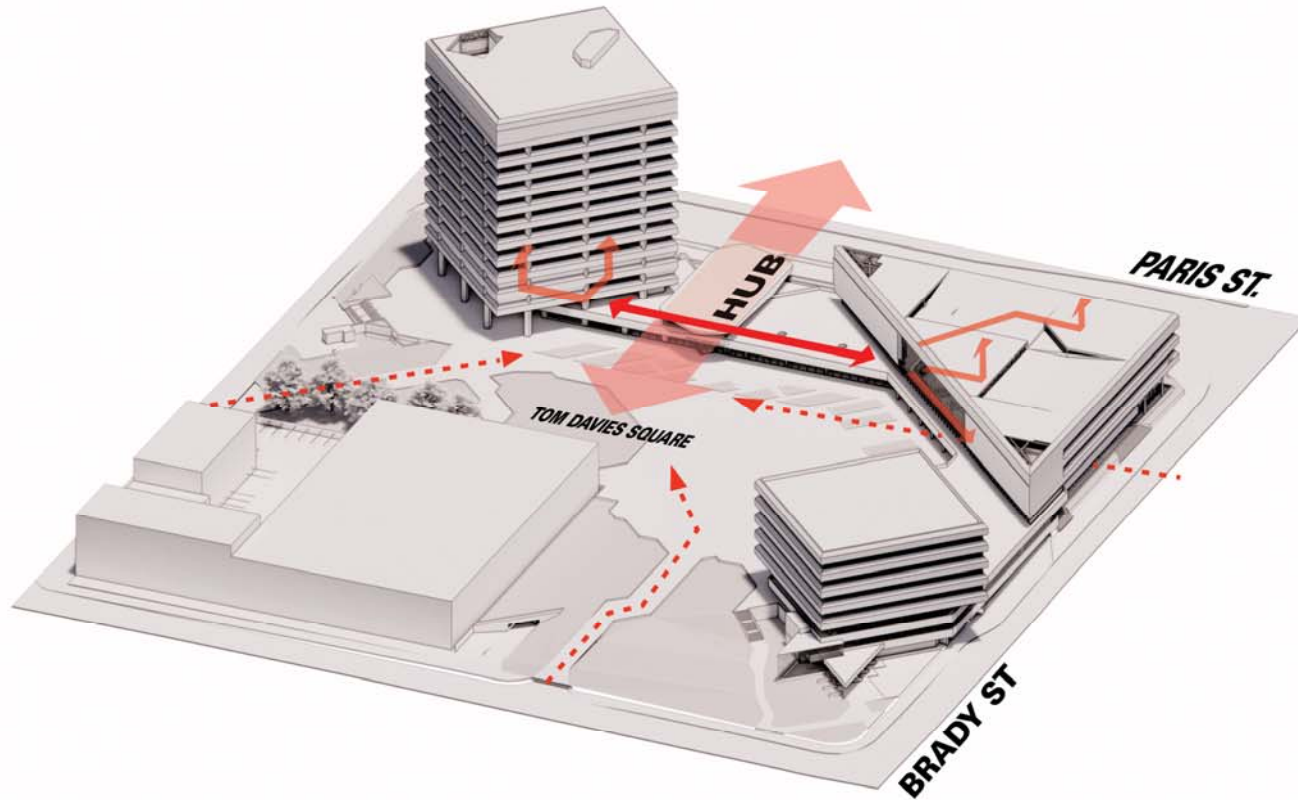
199 LARCH IS **DISCONNECTED** FROM 200 BRADY.

ART GALLERY IS **DISCONNECTED** FROM THE 'HUB' (CIVIC ATRIUM).

LIBRARY & GALLERY ARE **DISCONNECTED**.

TOM DAVIES SQUARE IS **HIDDEN** AND **DISCONNECTED** FROM PARIS ST.

CONCEPT DIAGRAM



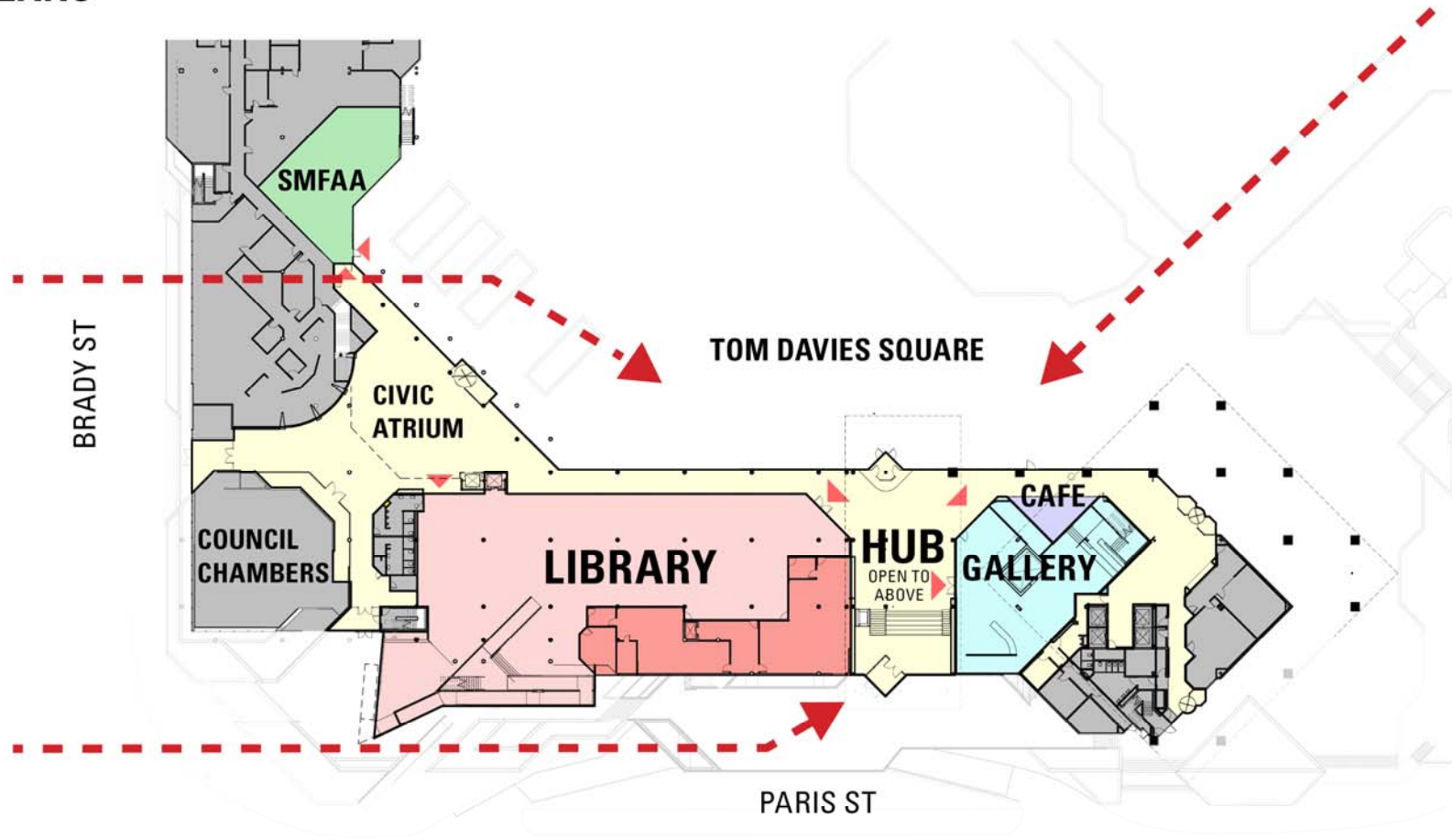
INSERT CULTURAL HUB

CREATE **BEACON** TO SQUARE AND PARIS

CONNECT TO PROGRAM

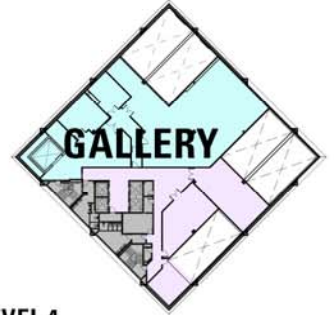
FLOW UPWARDS

FLOOR PLANS

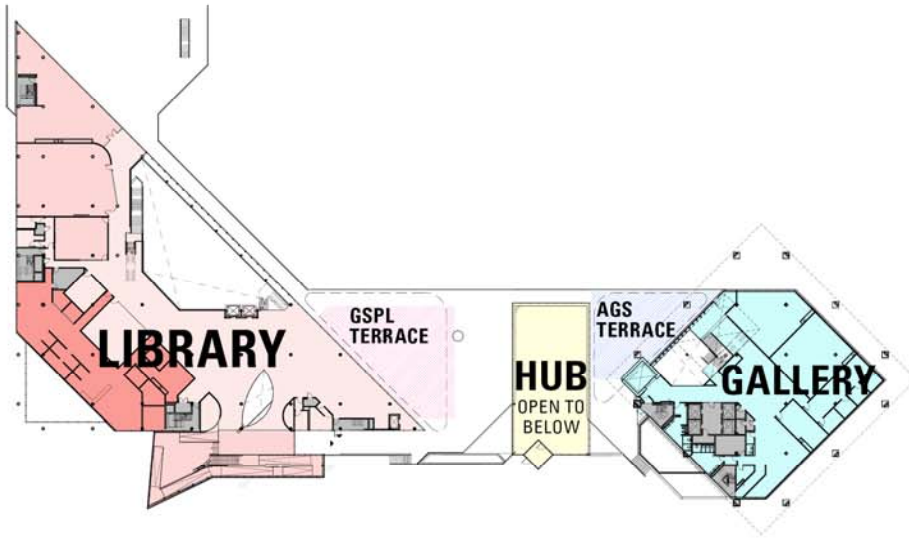


LEVEL 1

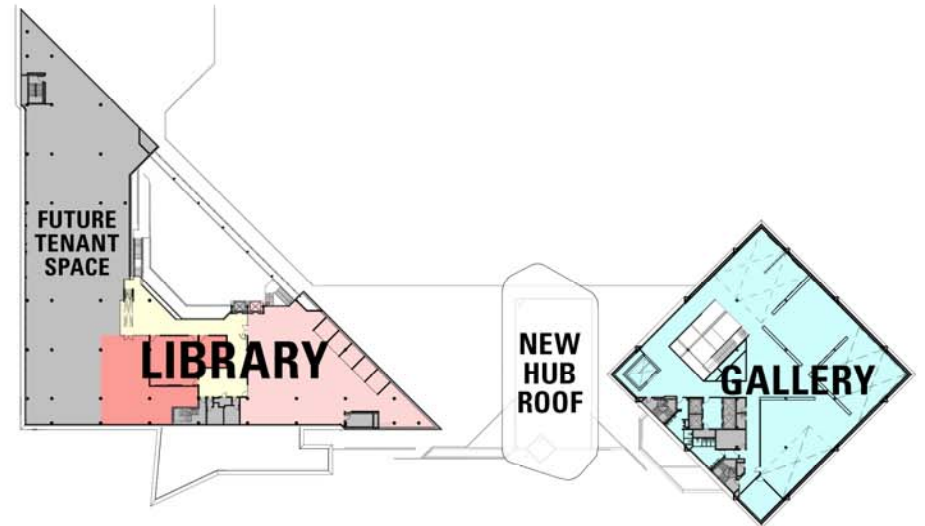
FLOOR PLANS



LEVEL 4



LEVEL 2



LEVEL 3

DESIGN CONCEPT | Precedents



HALIFAX CENTRAL LIBRARY - SCHMIDT HAMMER LASSEN



PHOENIX ART MUSEUM - TODD WILLIAMS BILLIE TSIEN ARCHITECTS



Exterior view from Tom Davies Square

SYNERGY. Each part boosts the exposure and patronage of the other - creating a dynamic Cultural Hub.

WELCOME everyone to a third space in the Community Hub.



Interior View of Cultural Hub

INTUITIVE FLOW pulls you through the building and towards the various services.



Interior view of library ramp.

GUIDE patrons through the building and create a journey.



Interior view of Children's Library looking out to civic atrium.

CONNECT to a functional and flexible climate-controlled gallery



Interior view of the Art Gallery of Sudbury

ARRIVE in the Gallery



CONNECTING indoors with the outdoors



Exterior - Library Ramp and Cultural Hub from Brady St. and Paris St.



A NEW BEACON will draw people in from the Greater Sudbury Area and signal a new Cultural Focal Point.

PROJECT COST

PROJECT COST BREAKDOWN		
CULTURAL HUB CONSTRUCTION (PRE-CONTINGENCY)		\$20,700,000
MUNICIPAL SERVICE RELOCATION (PRE-CONTINGENCY)		\$9,100,000
CONTINGENCIES (INCLUDING ESCALATION ALLOWANCE)		\$8,600,000
SOFT COSTS		\$6,700,000
ENHANCED ACCESSIBILITY		\$1,300,000
ENHANCED SUSTAINIBILITY		\$16,300,000
PUBLIC ART		\$500,000
OTHER COSTS (ADMINISTRATION, FUNDING ANNOUNCEMENT, GRAND OPENING)		\$900,000
	TOTAL=	\$64,100,100
	MUNICIPAL PORTION OF HST (1.76%)=	\$1,100,000
	TOTAL=	\$65,200,000
SINGLE STOREY RAMP CONSTRUCTION		\$2,700,000
ACCESSIBILITY UPGRADES TO COUNCIL CHAMBERS		\$200,000
	TOTAL=	\$2,900,000
	MUNICIPAL PORTION OF HST (1.76%)=	\$100,000
	TOTAL=	\$68,200,000

PROJECT FUNDING

IN NOVEMBER 2023, COUNCIL CARRIED A SOLUTION CC2023-288 THAT DETAILED A FUNDING PLAN FOR THE PROJECT.

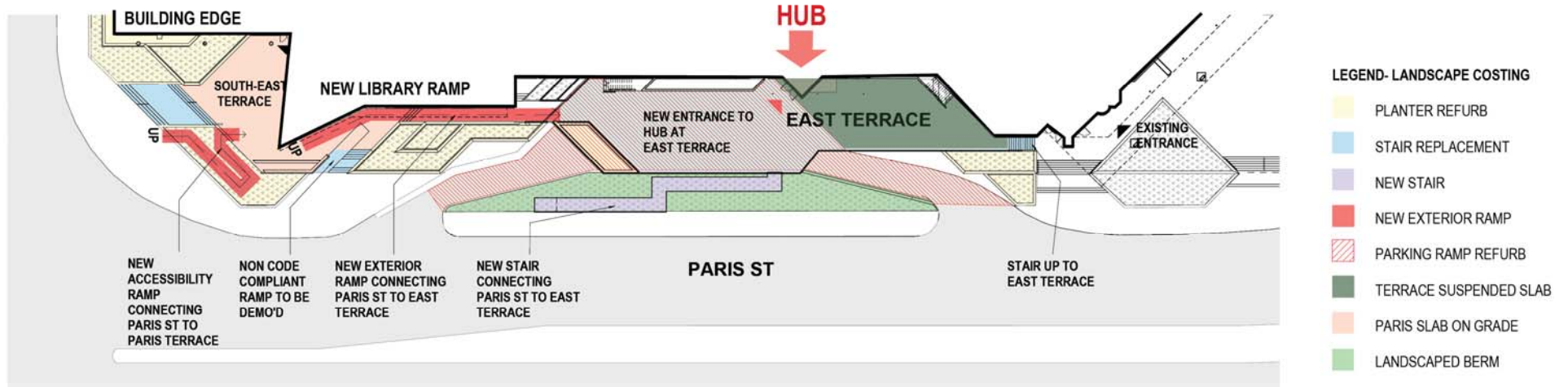
PROJECT FUNDING PLAN

A. CULTURAL PARTNER'S CONTRIBUTION	up to \$3.1M
B. POTENTIAL EXTERNAL FUNDING	up to \$24.9M
C. MUNICIPAL FUNDS	up to \$37M
TOTAL PROJECT BUDGET	\$65M

EXTERNAL FUNDING

GREEN and INCLUSIVE COMMUNITY BUILDINGS (GICB) FUNDING APPROVED FOR THE CITY OF SUDBURY CULTURAL HUB	\$24.9M
---------------------------------------------------------------------------------------------------------------------	----------------

FUTURE IMPROVEMENTS



An architectural rendering of a modern, multi-story university building with a prominent glass-enclosed entrance. The building is set on a slight rise. In the foreground, a paved road and a brick-paved path are visible. A person is riding a bicycle on the path, and a blurred orange vehicle is moving across the road. The sky is overcast, and some trees are visible on the left side of the frame.

NEXT STEPS:

Parking Study

Public Open House

Detailed Engagement

Design Development

THANK YOU!