

# 30x30 Progress Update

November 12<sup>th</sup>, 2024





# The Municipal Protected Areas Program

**A coalition of ENGOs across Canada working together to:**

- Increase recognition and protection of municipal and near-urban natural areas across southern Canada to advance the 30×30 target
- Encourage a stronger local conservation ethic in across southern Canada
- Encourage action at all levels to halt and reverse biodiversity loss



**Our Website: [Municipal30x30.ca](https://Municipal30x30.ca)**



# THE PAN-CANADIAN STANDARD

All properties must meet the following criteria...

- Clearly defined boundaries
- Effective means to control all activities likely to negatively impact biodiversity
- Protection is long-term, year-round and difficult to reverse
- Managed by governing authorities so that conservation outcomes are achieved



# Protected Area

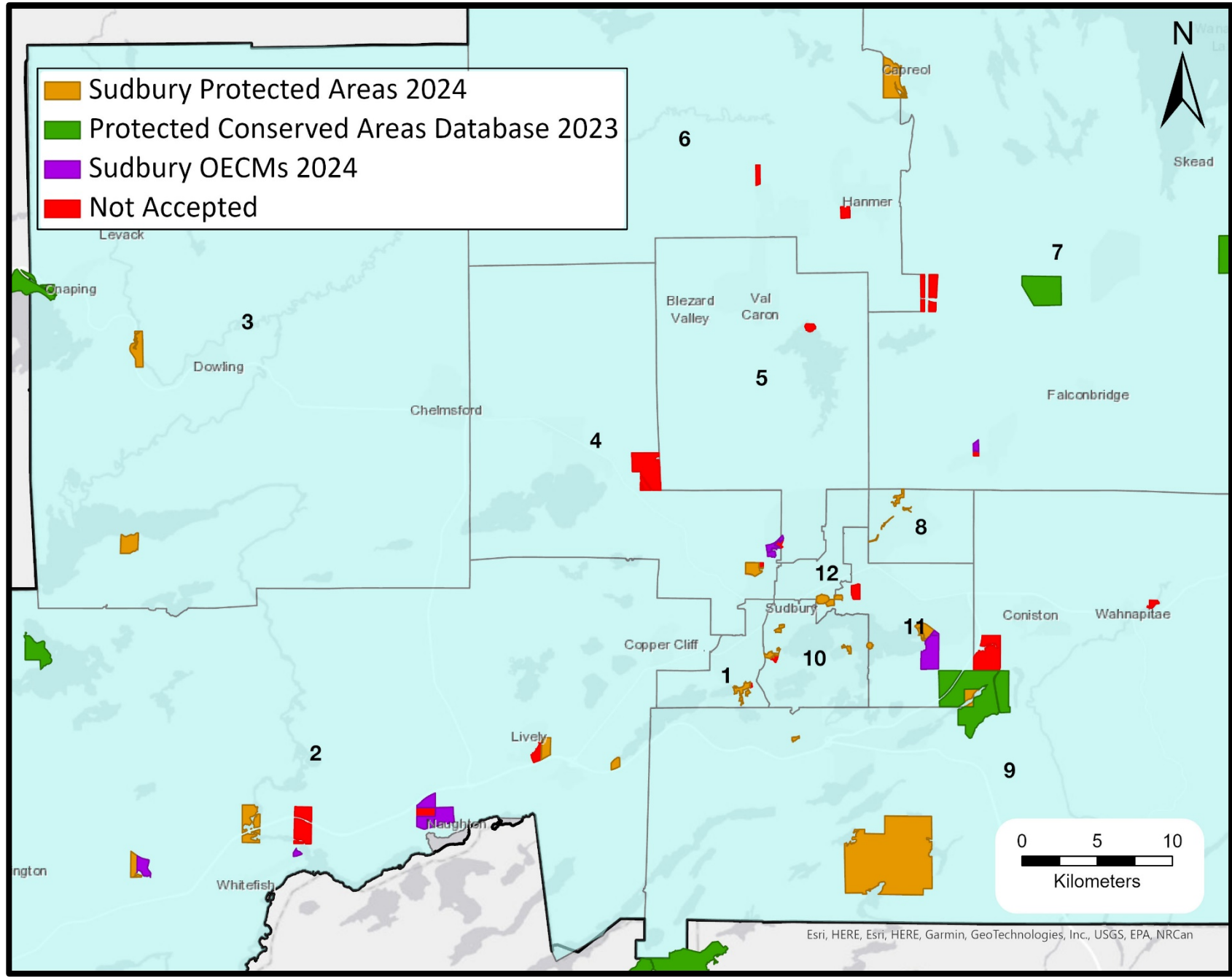
# Other Effective Area-based Conservation Measure





# What contributed to this year's assessment?

- **2,870.2** ha of municipal lands were put forward by the Task Force for review
- **2,172.6** ha of municipally owned lands were accepted by MECP
- **1,839.7** ha were designated as **Protected Areas**
- **332.9** ha were designated at **Other Effective Area-based Conservation Measures (OECMs)**
- **990** ha of land were **not accepted**.



Esri, HERE, Esri, HERE, Garmin, GeoTechnologies, Inc., USGS, EPA, NRCan

# What made the submission successful?

## 1. **Parks and Open Space (Section 7.0, Official Plan)**

Scope of objectives, identifies primary objectives, policies that guide permitted/prohibited use, and states the long-term objectives.

## 2. **Natural Environment (Section 9.0, Official Plan)**

Additional protective mechanisms for natural features, objectives to guide the management of the natural environment

## 3. **Zoning By-law**

Conservation – Open Space and Parks zoning

## 4. **Park By-law**

Permitted/prohibited activities and is an enforceable document used to protect these areas.

## 5. **Biodiversity Action Plan and Regreening Strategy**

Guides restoration activities and compels the CGS to continue protect. Provides biodiversity outcome evidence.

# Why were some sites unsuccessful?

## **Lack of protective designations within the Official Plan**

- not all sites were captured under the Parks and Open Space designation, leaving them lacking in management guidance and policy protection.

## **Insufficient protection through Zoning By-law**

- Some sites were zoned as rural in addition to not having protective designations from the Official Plan.

## **Withdrawn by City staff**

- Clarification of land ownership
- Concerns regarding future or current use for recreational purposes

# For example...

## **Greenway Park**

- Land Use: Parks and Open Space
- Zoning: Park
- Park Classification: Natural Park
- Primary Objective: Protection of natural area

= **Protected Area**





# For example...

## **Moonlight Beach**

- Land Use: Parks and Open Space
- Zoning: Park
- Park Classification: Regional Park
- Primary Objective: To be a focal point for the city and tourism area

**= Other Effective Area-based Conservation Measure**



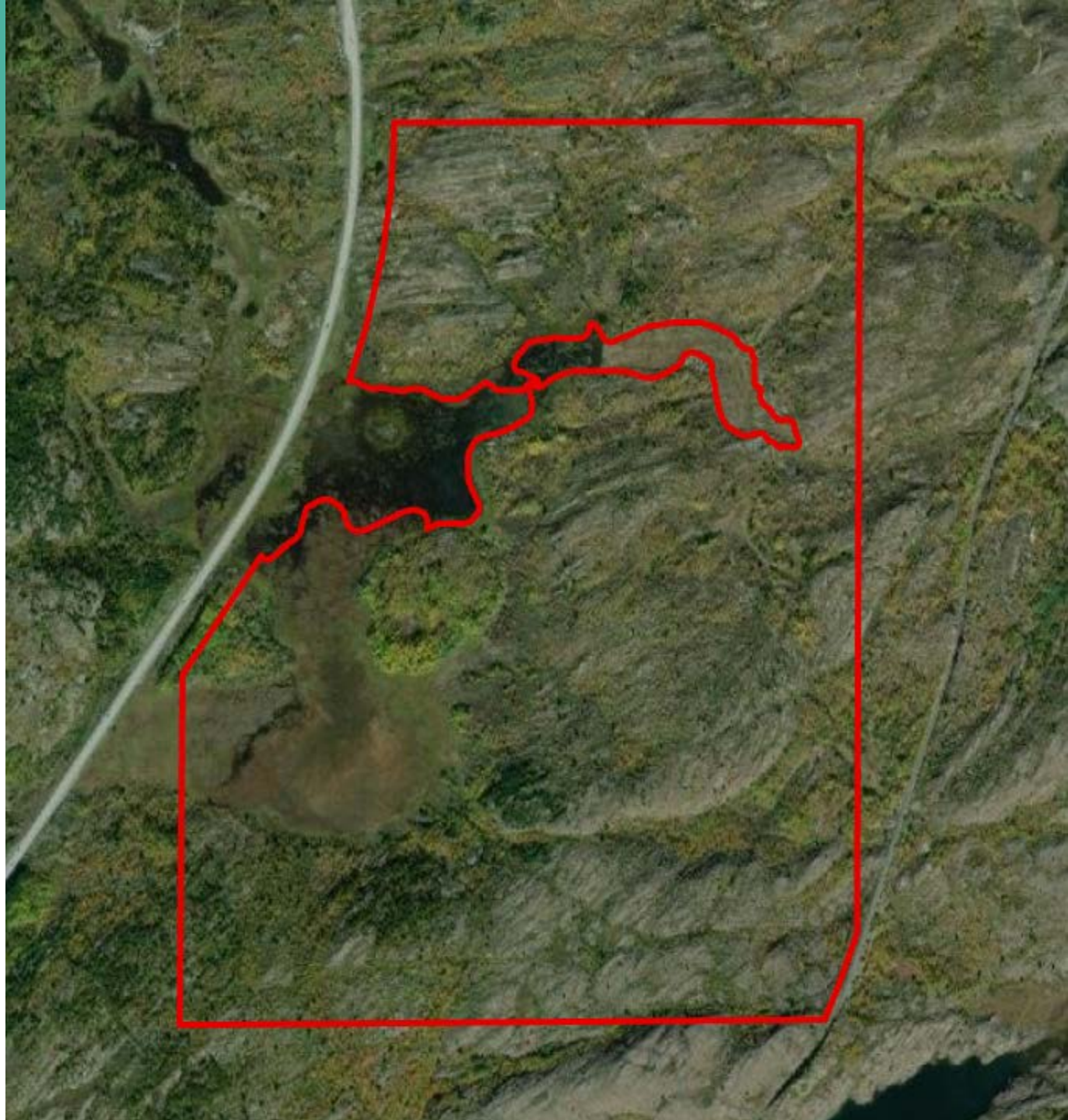


# For example...

## Daisy Lake Area

- Land Use: **Rural**
- Zoning: **Rural and General Industrial**
- Park Classification: Natural Park

**= Was not accepted**

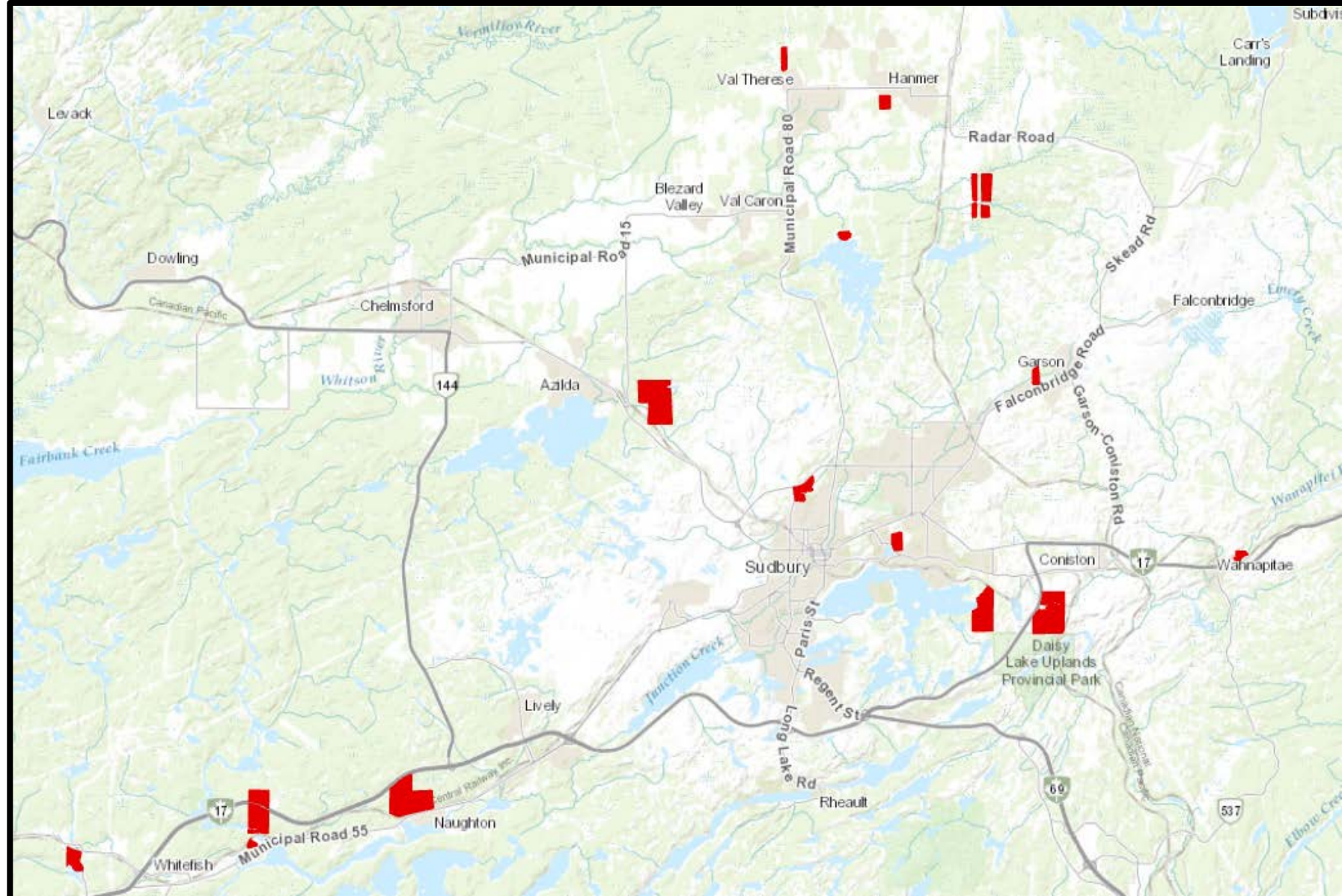




# Next Steps

**990 hectares of land identified by the Task Force can go forward next year if...**

- Amendments are made to the zoning by-law to convey the prioritization of conservation
- Land-use is changed to Parks and Open Space





# Additional Mechanisms for Protection

## **Securing natural areas for conservation**

- Leveraging the development approvals process
- Land acquisition strategies

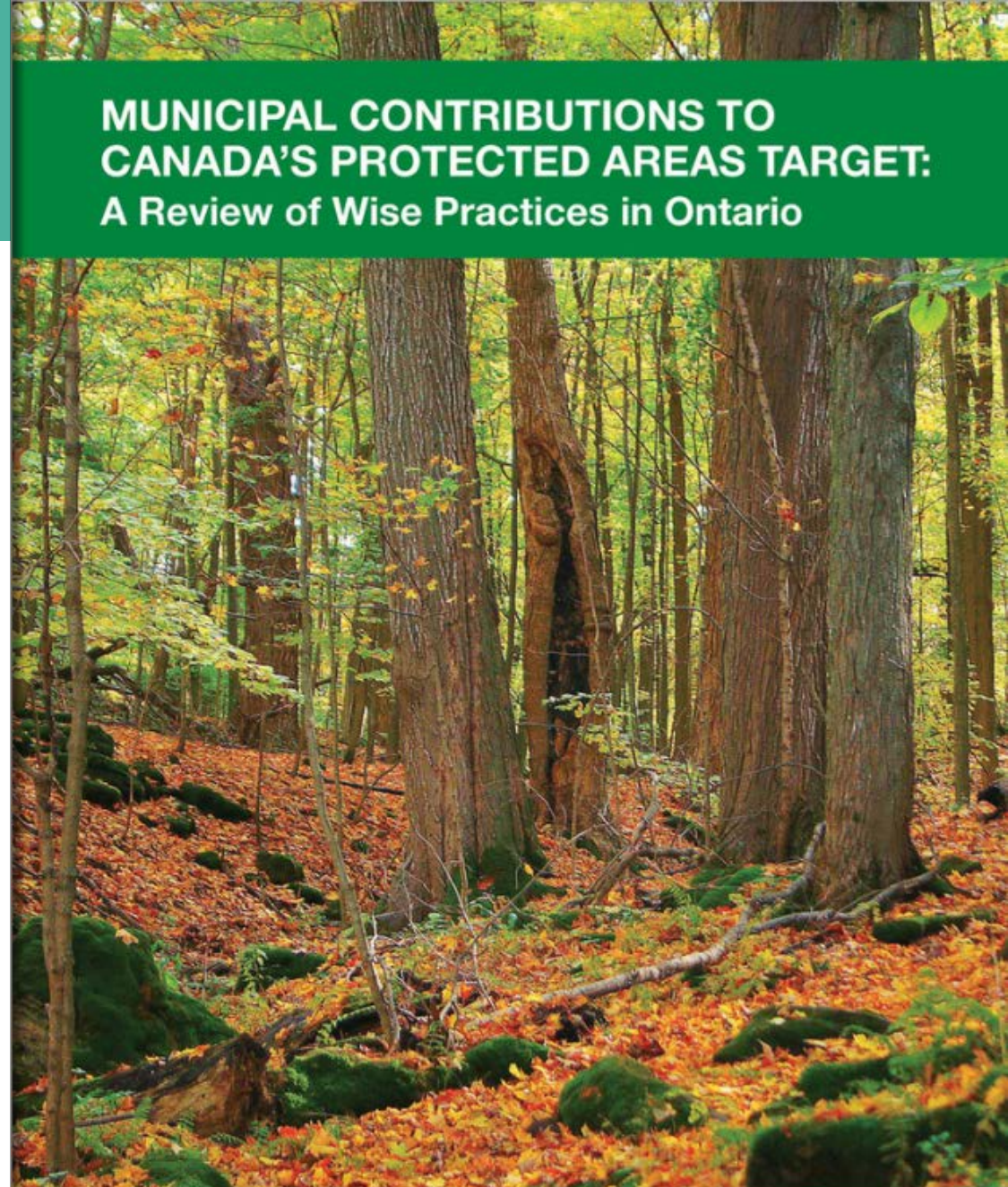
## **Policies to protect natural areas**

- Implementing Official Plan policies and designations
- Zoning By-laws
- Parkland classification By-laws

## **Monitoring biodiversity values and taking stewardship actions**

- Natural heritage management plans
- Biodiversity strategies
- Restoration and naturalization plans

**MUNICIPAL CONTRIBUTIONS TO  
CANADA'S PROTECTED AREAS TARGET:  
A Review of Wise Practices in Ontario**





# Thank you!

© Belinda Myers

## Contact Information

[jennak@ontarionature.org](mailto:jennak@ontarionature.org)

Ontario  
Nature 

This project was undertaken with the financial support of the Government of Canada provided through the federal Department of Environment and Climate Change.



Environment  
Canada

Environnement  
Canada