

Council Meeting

February 18, 2025

Cultural Hub and Greater Sudbury Event Centre Update
Strategic Projects

Cultural Hub



Cultural Hub Update

- Federal funding announcement of **\$24.9M - Green and Inclusive Community Buildings**
- Council received a presentation of schematic design, design renderings, Class C cost estimate
- Ongoing engagement initiatives
- Construction management project delivery model



Cultural Hub Update

- Request for Prequalification Construction Manager
- Request for Proposal
- Proceeding with design toward a Class B cost estimate
- Cost reconciliation between Quantity Surveyor and Construction Manager

Cultural Hub – Next Steps

- Post request for proposal
- Continue to pursue external funding sources
- Advance project design with the design team, partners and staff
- Engagement opportunities and follow up sessions

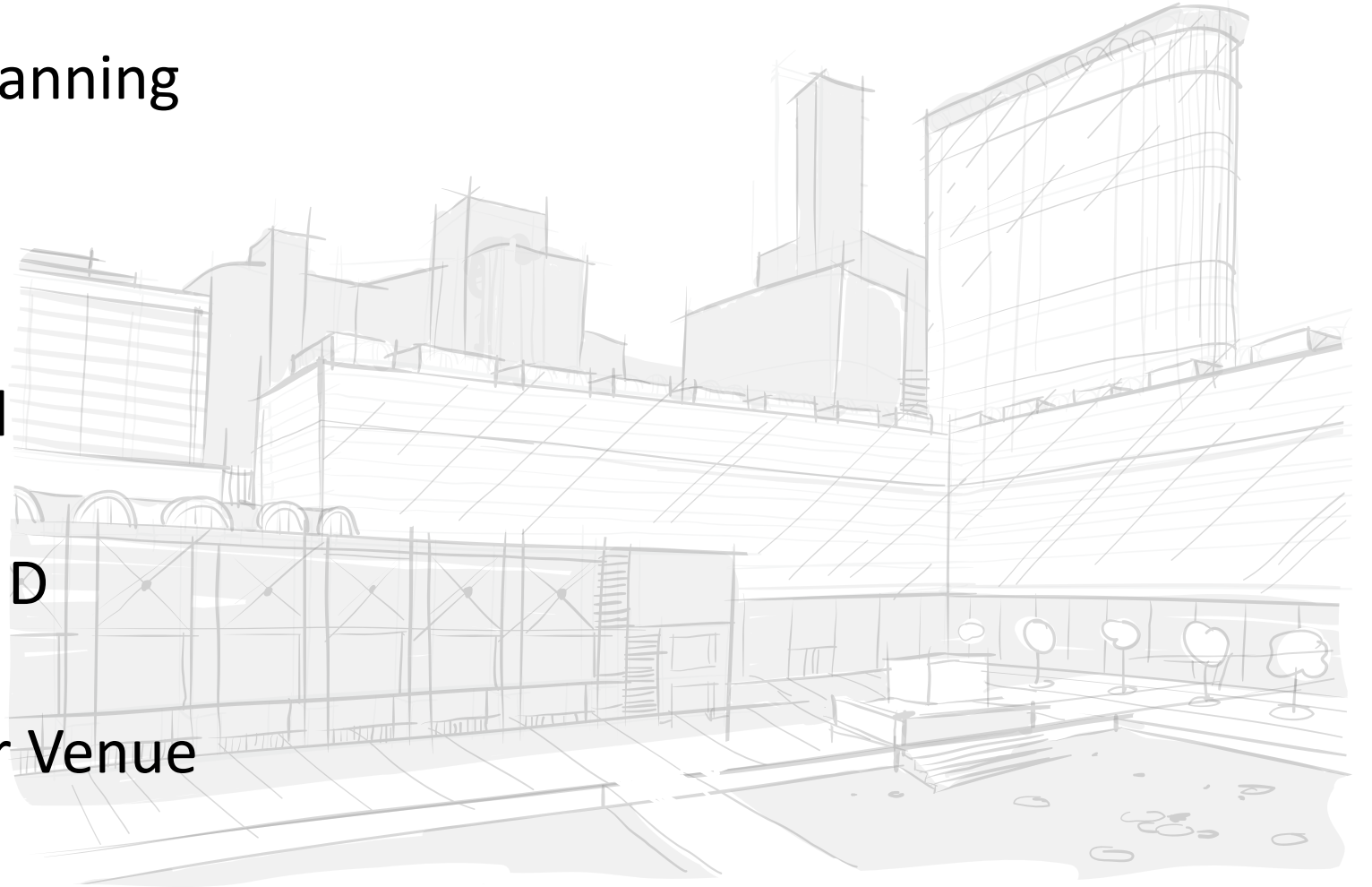


Event Centre



Event Centre Update

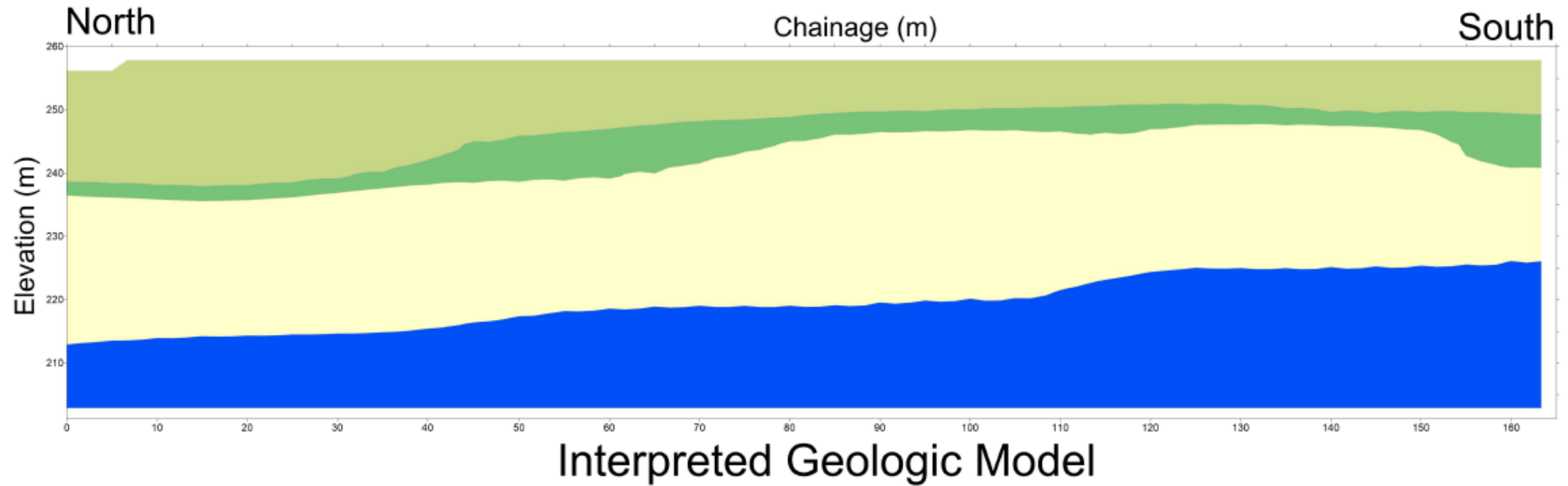
- External engagement planning and implementation
- Communication strategy development
- Continuing geotechnical investigation
- Schematic Design/Class D estimate
- Request for Proposal for Venue Management Services



Event Centre – Site Selection

- Experts included:
 - Engineering, Linear Infrastructure, Planning, Leisure and Transit Services
 - KKR Advisors, BBB Architects, Exp Services Inc., J.L. Richards & Associates
- Site selection major considerations:
 - Geotechnical conditions
 - Existing infrastructure, utilities and buildings
 - Development considerations
 - Parking

Site Selection – Geotechnical Conditions



Site Selection – Existing Utilities

Two primary factors:

- Primary electrical duct bank under Shaughnessy Street
- 400mm trunk watermain under Elgin Street



Site Selection – Existing Buildings

CP Railway Station



YES Theatre/Sudbury Theatre Centre

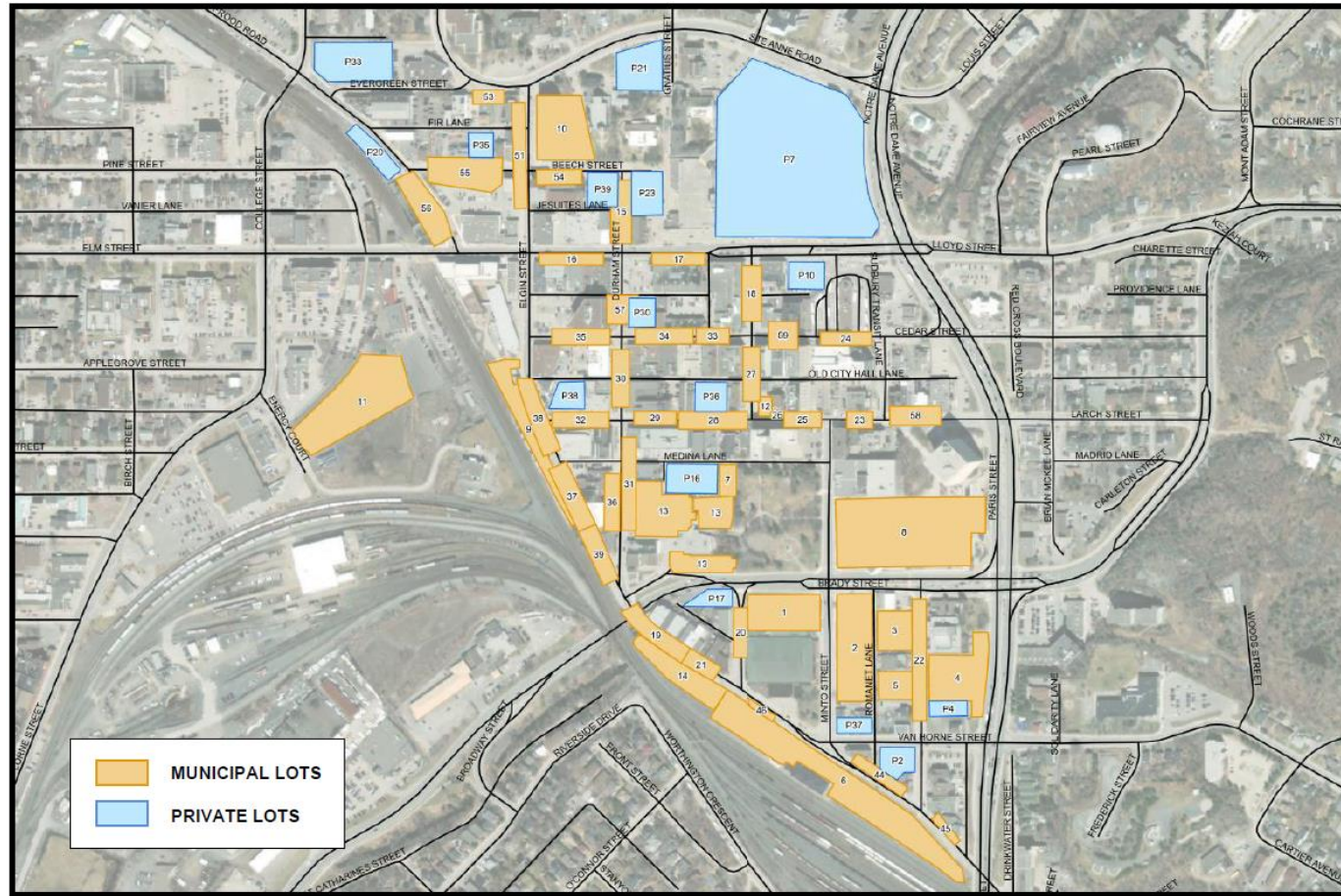


Site Selection – Development Considerations



High value land parcels along Brady and Paris Street

Site Selection – Parking Map



Available parking spaces
within the Downtown:
3,648 (March 2024)

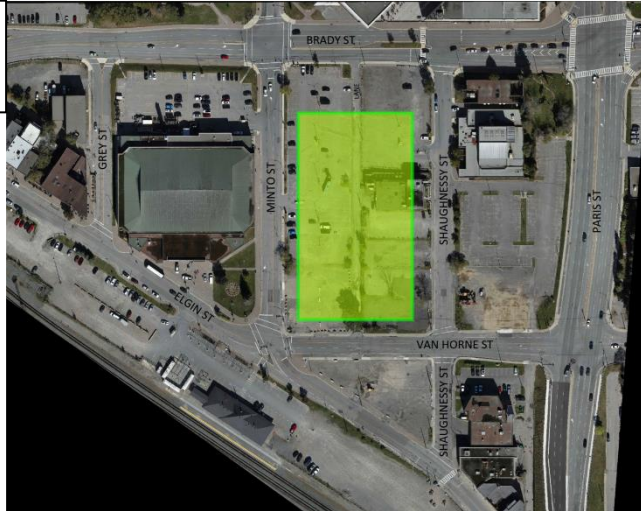
Includes off street, on street
and private parking lots

Site Selection – Options

Principle Factors Evaluated:

- Cost
- Schedule
- Economic development opportunities
- Visibility

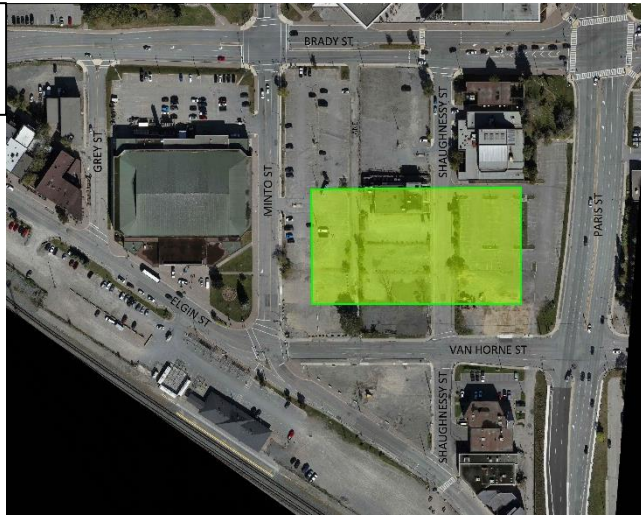
#1



#3



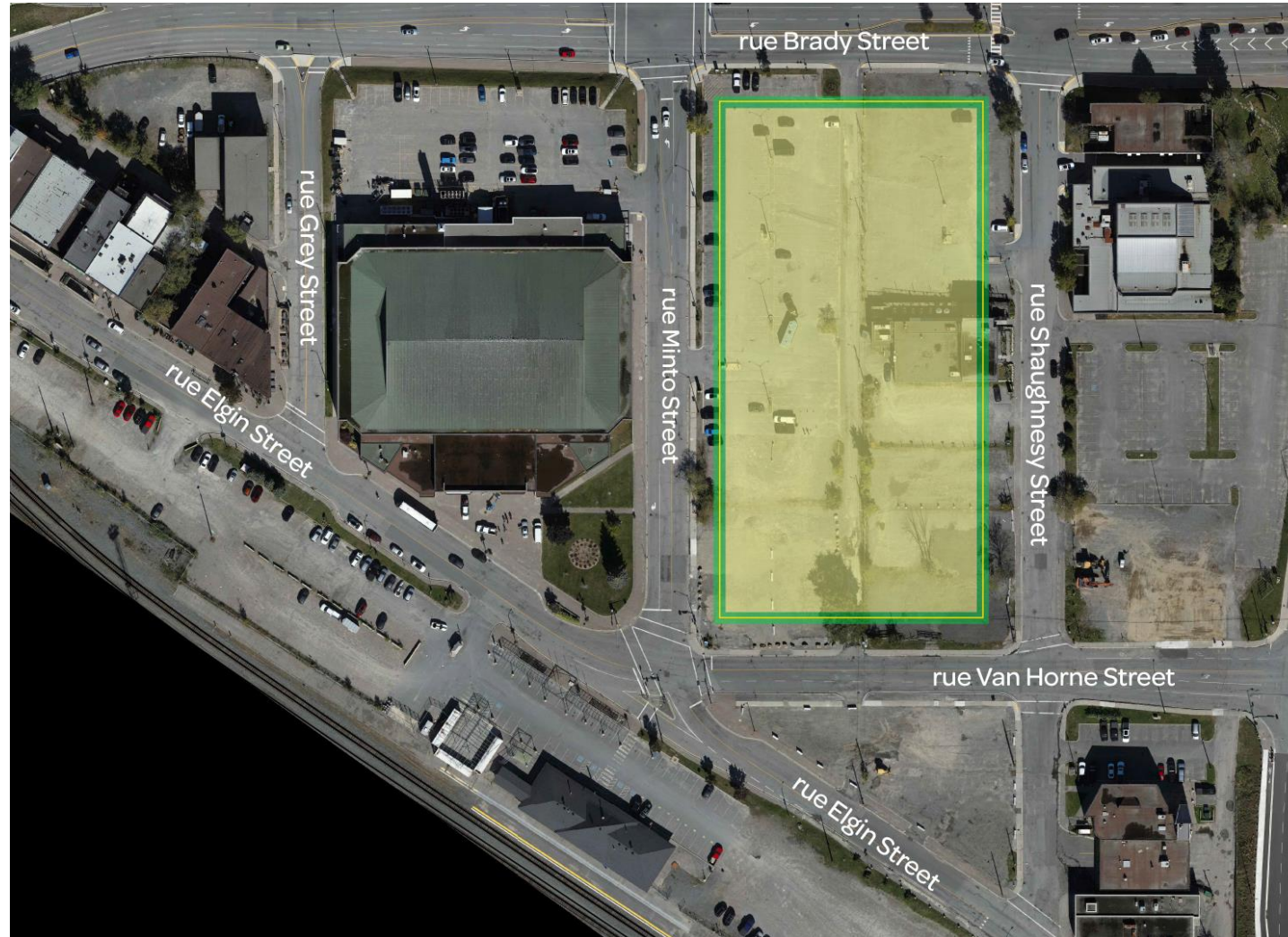
#2



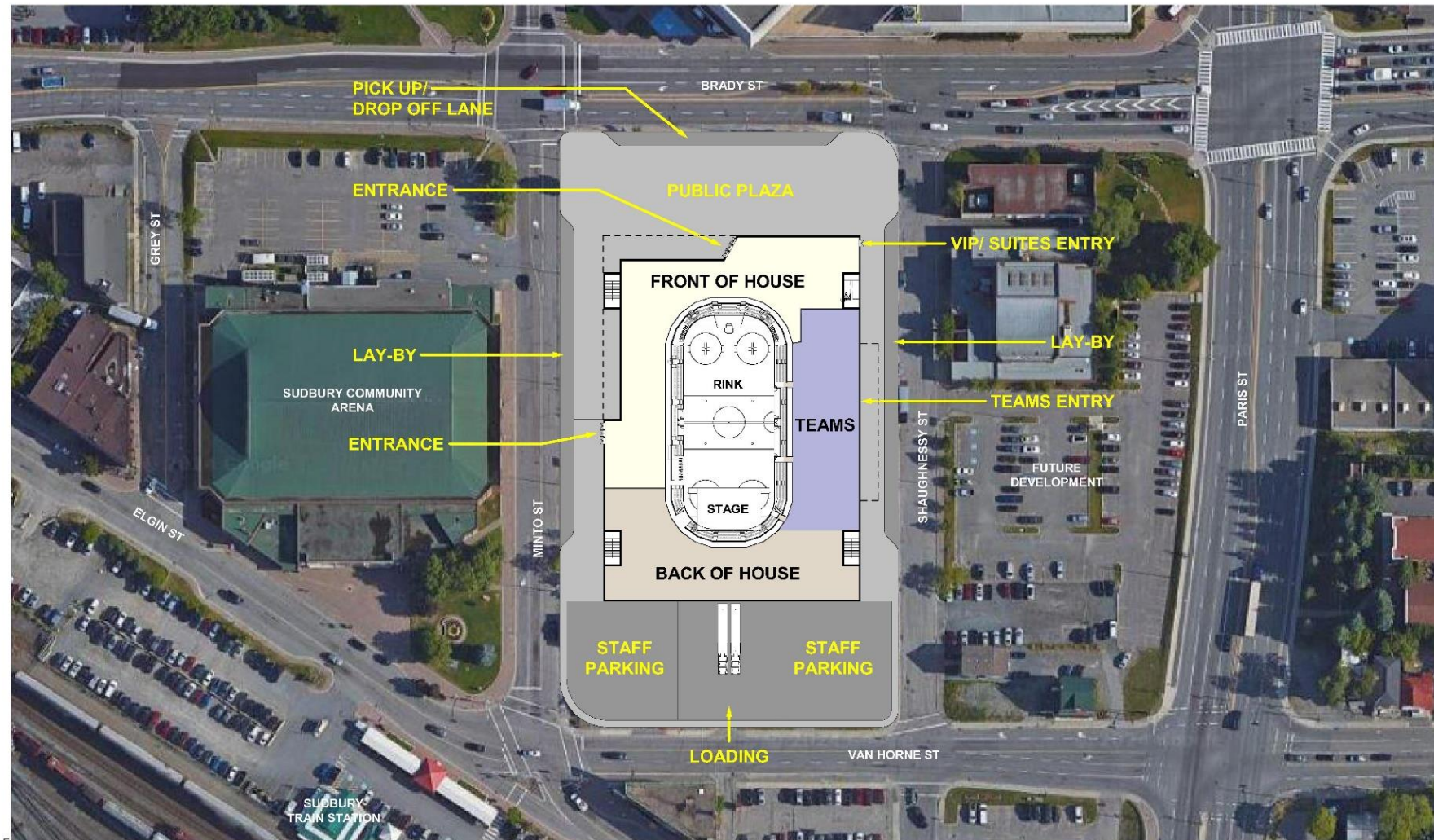
#4



Site Selected



Event Centre – Block Design



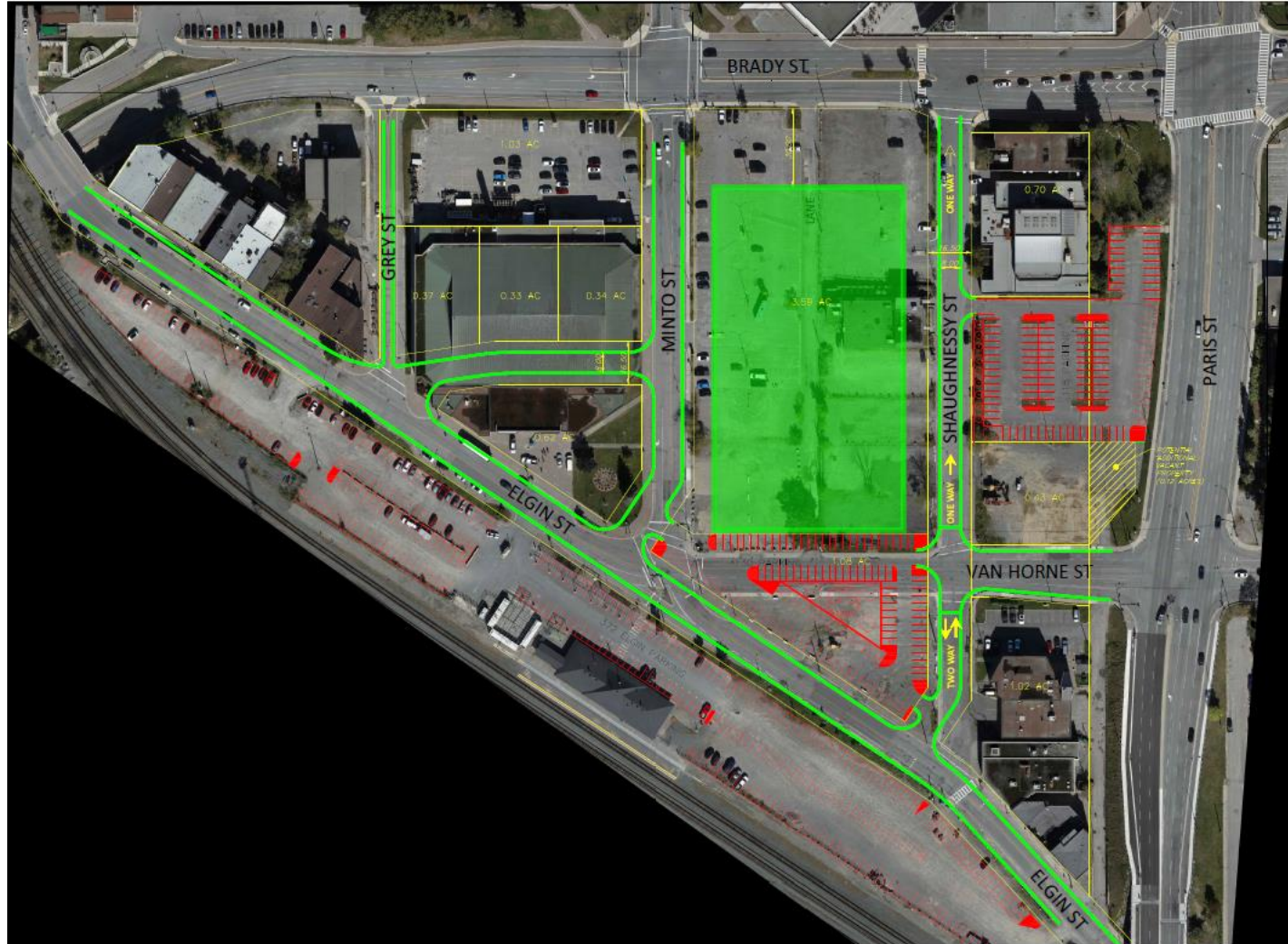
Example Event Centre – Front of House



Example Event Centre – Back of House



Future State Development Opportunities



Event Centre – Engagement Next Steps

- Community and Stakeholder Communication and Engagement
 - Indigenous communities and organizations
 - Accessibility Advisory Panel
 - Sudbury Theatre Centre
 - Sudbury Wolves Sports and Entertainment
 - Sudbury arts, culture and sports associations
 - Other community groups
- Developing branding and marketing strategies

Event Centre – Next Steps

- Schematic Design/Class D estimate
- Next phase geotechnical investigation
- Complete term-sheet negotiations with SWSE
- Issue Request for Prequalification for Construction Manager
- Request for Proposal for Venue Management Services
- Install perimeter fencing around selected site



Ignite
Your
Northern
Spirit

Éveillez
votre
esprit du
Nord


event centre
centre d'événements

 Sudbury