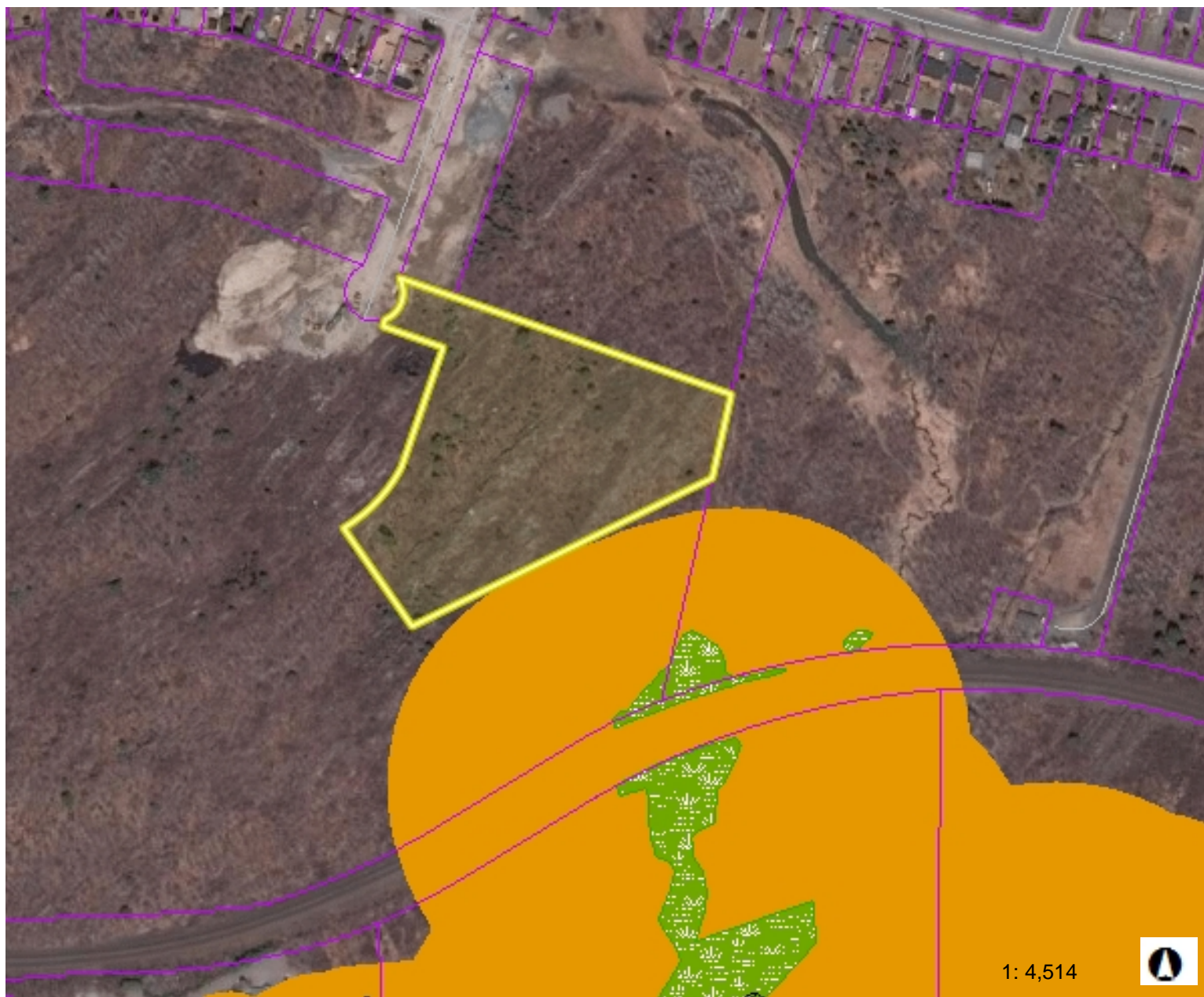




751-6/20-25 - Nottingham Avenue, Sudbury PIN 735760489
Conservation Sudbury File 12583



Legend

- NDCA Jurisdiction
- Parcels (File NO)
- Subwatersheds
- Roads_CGS_2021
- Floodplain
- Waterbody
- Wetland
- Active Municipal Drains
- Watercourse
- Regulation Limits
- Municipal Boundary (CGS)
- World Imagery
- Low Resolution 15m Imagery
- High Resolution 60cm Imagery
- High Resolution 30cm Imagery

Notes

Although Conservation Sudbury makes every effort to ensure accurate mapping, regulated natural hazards may exist on-site that have not yet been identified. Should a feature be identified, the applicant must halt works immediately and contact Conservation Sudbury at 705.674.5249. Regulated hazards include floodplains, watercourses, shorelines, wetlands, and valley slopes.

229.3 0 114.66 229.3 Meters

WGS_1984_Web_Mercator_Auxiliary_Sphere
© Latitude Geographics Group Ltd.

This map is a user generated static output from an Internet mapping site and is for reference only. Data layers that appear on this map may or may not be accurate, current, or otherwise reliable.

THIS MAP IS NOT TO BE USED FOR NAVIGATION