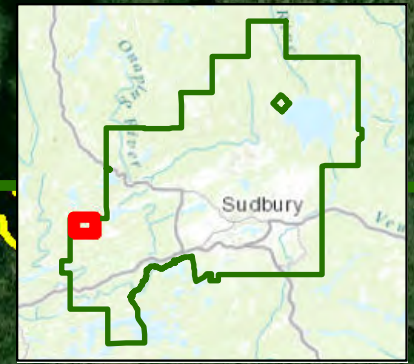


# Seasonally Maintained Road Segments City of Greater Sudbury (Chicago Mine Road)



PIN Ownership:  
Private

M4

RU

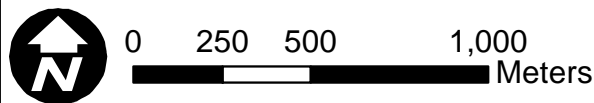
Chicago Mine Road, Trill Township  
Maintenance Class: 6  
Zoning: RU (Rural), M4 (Mining Industrial)  
Approx. Length: 3.1 km  
Dwellings with direct access to Chicago Mine Road: 0

RU

RU

RU

M4



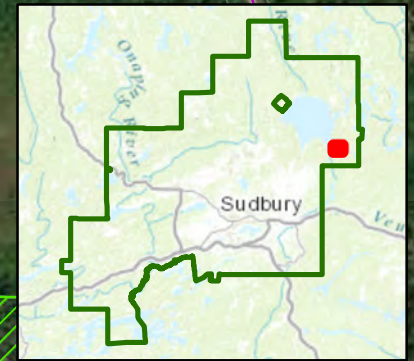
July 7, 2021

## Legend

- Municipal Boundary
- Seasonal Road
- Street Network
- Crown Land
- Properties along seasonal roads
- Zoning



# Seasonally Maintained Road Segments City of Greater Sudbury (Johnson Road)



Osprey Trail

RU

RU

RS

Bugg Lake Road

RU

Johnson Road

Kukagamii Lake Road

PIN Ownership:  
Private

PIN Ownership:  
Crown

Johnson Road, Scadding Township  
Maintenance Class: 6  
Zoning: RU (Rural)  
Approx. length: 2.63 km  
# of dwellings with direct access to  
Johnson Road: 0

7

## Legend

- Seasonal Road
- Street Network
- Crown Land
- Zoning
- Properties along seasonal roads

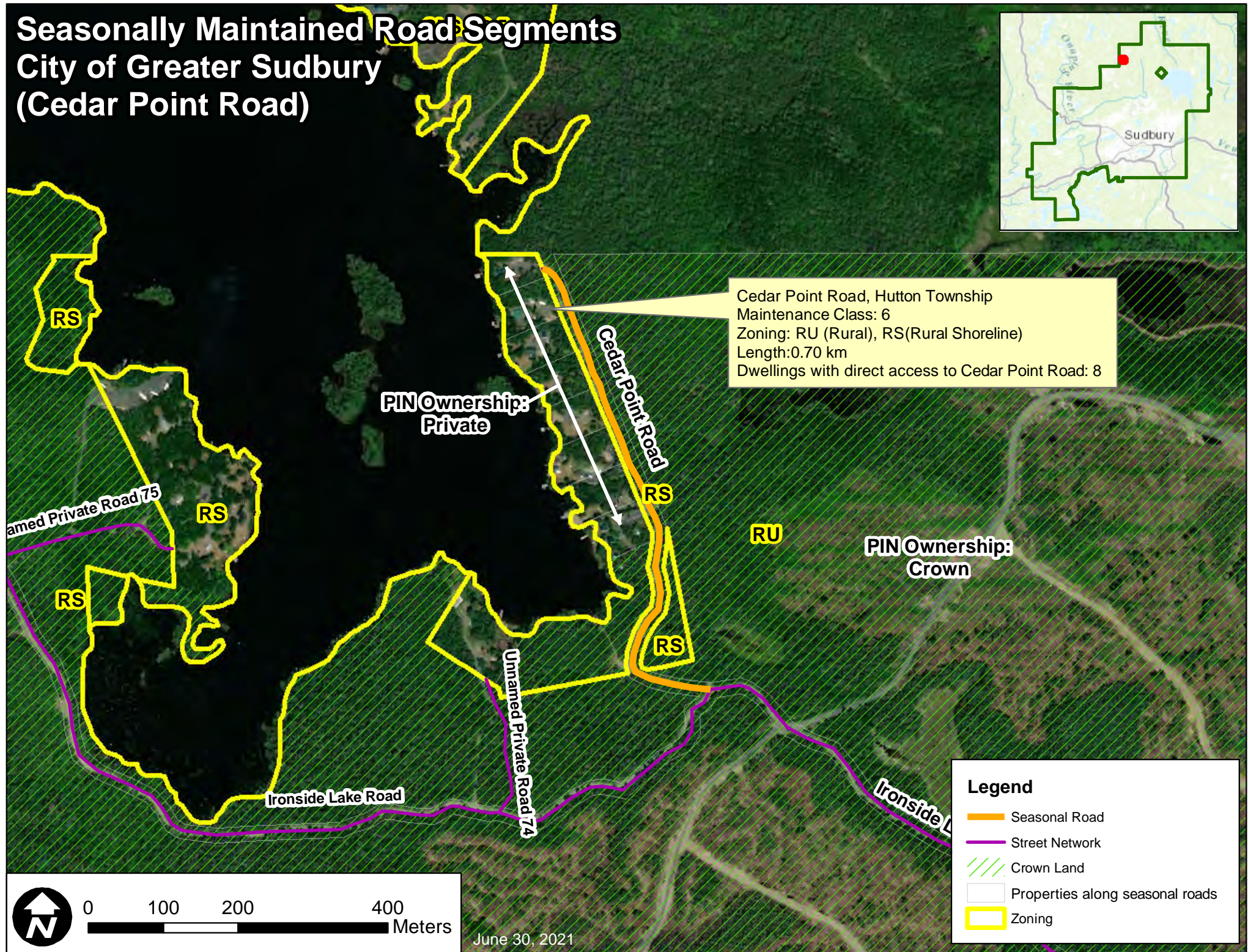
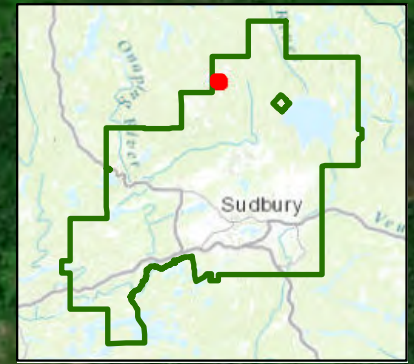


0 125 250 500  
Meters

June 30, 2021



# Seasonally Maintained Road Segments City of Greater Sudbury (Cedar Point Road)



Cedar Point Road, Hutton Township  
Maintenance Class: 6  
Zoning: RU (Rural), RS (Rural Shoreline)  
Length: 0.70 km  
Dwellings with direct access to Cedar Point Road: 8

PIN Ownership:  
Private

PIN Ownership:  
Crown

## Legend

- Seasonal Road
- Street Network
- Crown Land
- Properties along seasonal roads
- Zoning

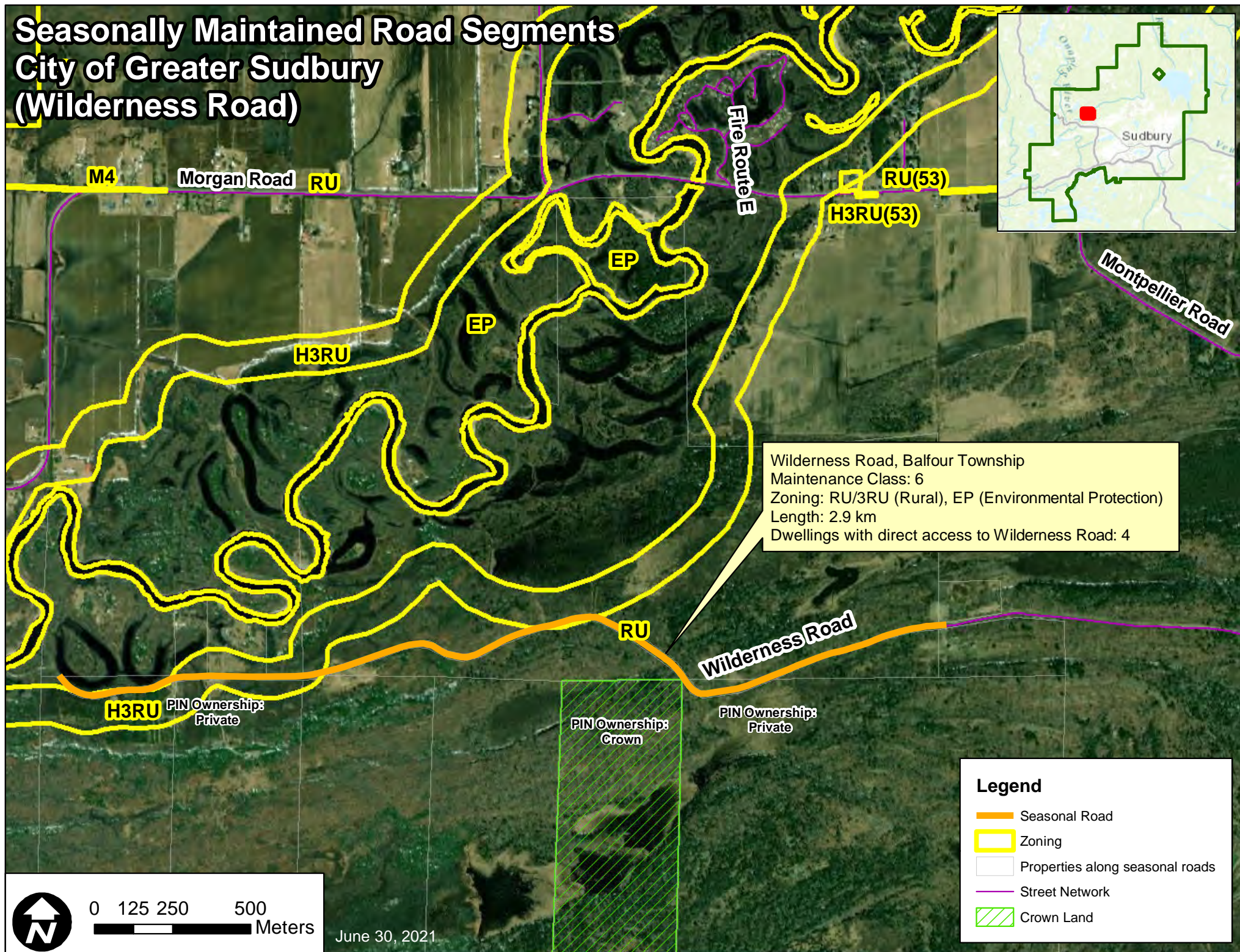


0 100 200 400 Meters

June 30, 2021



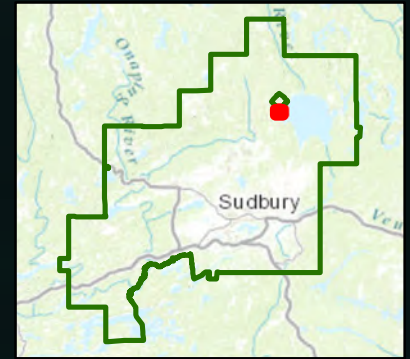
# Seasonally Maintained Road Segments City of Greater Sudbury (Wilderness Road)





# Seasonally Maintained Road Segments City of Greater Sudbury (West Bay Road)

West Bay Road, Norman Township  
Maintenance Class: 6  
Zoning: RU (Rural), RS(Rural Shoreline)  
Length: 6.6 km  
Dwellings with direct access to West Bay Road: 6



RU

RS

RU

West Bay Road

PIN Ownership:  
CROWN

RS

RS



0 125 250 500 Meters

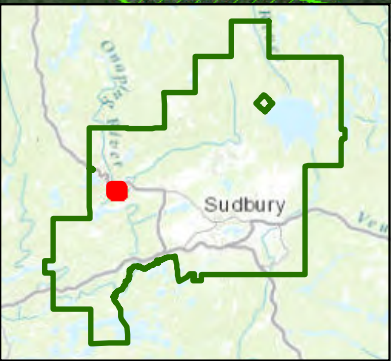
June 30, 2021

## Legend

- Seasonal Road
- Street Network
- Zoning
- Properties along seasonal roads
- Crown Land



# Seasonally Maintained Road Segments City of Greater Sudbury (Tymchuck Road)



Simmons Road

New Cobden Road

Tymchuck Road

PIN Ownership: Private

Tymchuck Road, Dowling Township  
Maintenance Class: 6  
Zoning: RU/HRU (Rural)  
Length: 1.6 km  
Dwellings with direct access to Tymchuck Road: 4

H3M5

H3RU

EP

H3RU

EP

EP

EP

H3RU

## Legend

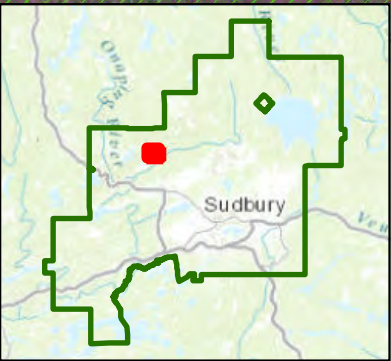
- Zoning
- Properties along seasonal roads
- Seasonal Road
- Street Network
- Crown Land



June 30, 2021



# Seasonally Maintained Road Segments City of Greater Sudbury (Nickel Offset Road)



M4

PIN Ownership: Crown

Nickel Offset Road, Morgan Township  
Maintenance Class: 6  
Zoning: RU (Rural)  
Approx. length: 1.2 km  
Dwellings with direct access to Nickel Offset Road: 1

RU

PIN Ownership: Private

PIN Ownership: Private

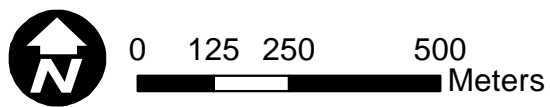
Nickel Offset Road

H3RU

EP

EP

EP



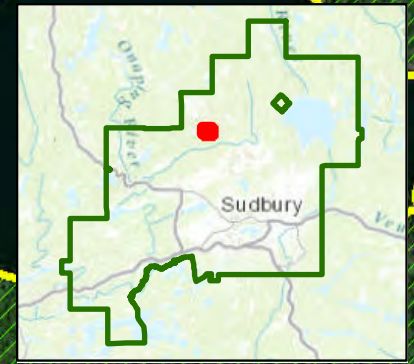
June 30, 2021

**Legend**

- Seasonal Road
- Zoning
- Properties along seasonal roads
- Street Network
- Crown Land



# Seasonally Maintained Road Segments City of Greater Sudbury (Nelson Lake Road)



M4

PIN Ownership:  
Private

PIN Ownership:  
Private

PIN Ownership:  
Private

Lamothe Lake Road

Nelson Lake Road, Bowell Township  
Maintenance Class: 6  
Zoning: RU (Rural)  
Approx. length: 2.20 km  
Dwellings with direct access to Nelson Lake Road: 0

PIN Ownership: Crown  
**RU**

Unnamed Private Road 44

Nelson Lake Road



0 125 250 500  
Meters

June 30, 2021

## Legend

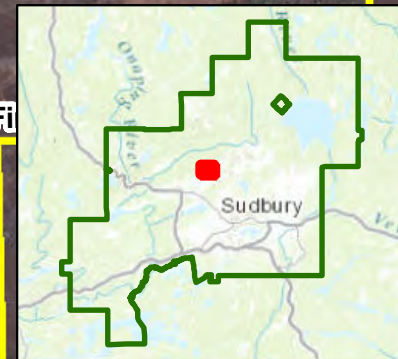
- Seasonal Road
- Street Network
- Zoning
- Properties along seasonal roads
- Crown Land



# Seasonally Maintained Road Segments City of Greater Sudbury (Montee Rouleau)

RU

FI



Montee Rouleau, Blezard Valley  
Maintenance Class: 6  
Zoning: A (Agriculture), Flood Plain  
Approx. length: 2.0 km  
Dwellings with direct access to Montee Rouleau: 1

PIN Ownership:  
Private

## Legend

- Seasonal Road selection
- Zoning
- Properties along seasonal roads
- Street Network

A

Montee Rouleau

A(1)

A

Seguin Street



0 125 250 500  
Meters

June 30, 2021

A

A

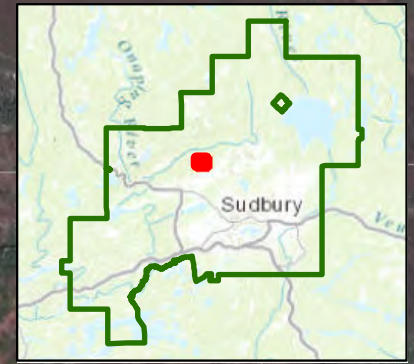
A(4)

A(9)

A



# Seasonally Maintained Road Segments City of Greater Sudbury (Montee Coutu)



## Legend

- Seasonal Road
- Zoning
- Properties along seasonal roads
- Street Network
- Crown Land

Montee Coutu

PIN Ownership:  
Private

PIN Ownership:  
Private

RU

Montee Coutu, Lumsden Township  
Maintenance Class: 6  
Zoning: RU (Rural)  
Approx. length: 1.6 km  
Dwellings with direct access to Montee Coutu: 0

PIN Ownership:  
Private

Fire Route Y

A



0 125 250 500  
Meters

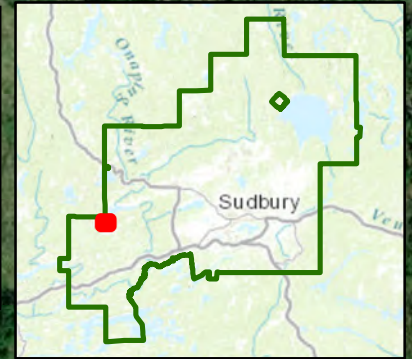
June 30, 2021



# Seasonally Maintained Road Segments City of Greater Sudbury (Mason Road)

## Legend

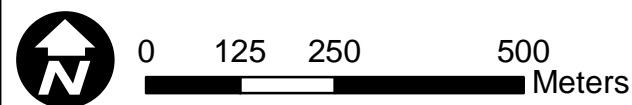
- Seasonal Road
- Zoning
- Properties along seasonal roads
- Street Network
- Crown Land



Mason Road, Trill Township  
Maintenance Class: 6  
Zoning: RU (Rural), SLS (Seasonal Limited Service)  
Approx. length: 2.2 km  
Dwellings with direct access to Mason Road: 19

PIN Ownership:  
Private

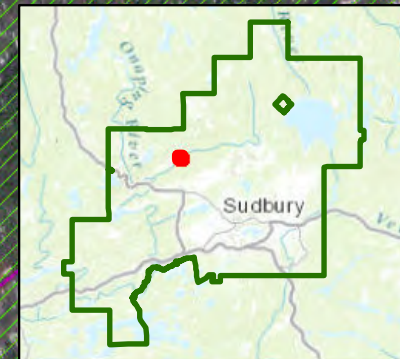
PIN Ownership:  
Crown



June 30, 2021



# Seasonally Maintained Road Segments City of Greater Sudbury (Lumsden Road)



Lumsden Road

Lumsden Road, Morgan Township  
Maintenance Class: 6  
Zoning: RU, H3RU, RU 76 (Rural)  
Approx. length: 0.75 km  
Dwellings with direct access to Lumsden Road: 0

H3RU

PIN Ownership:  
Crown

RU

EP

RU(76)



0 125 250 500 Meters

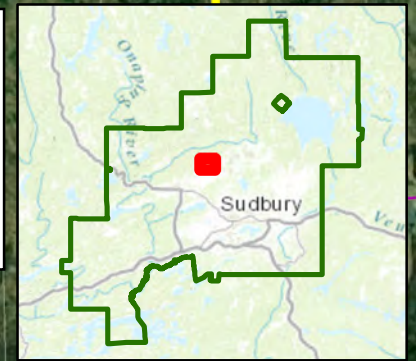
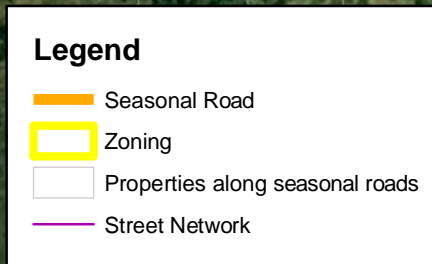
June 30, 2021

## Legend

- Seasonal Road
- Zoning
- Properties along seasonal roads
- Street Network
- Crown Land



# Seasonally Maintained Road Segments City of Greater Sudbury (Lumsden Road/Fire Route Y)



Lumsden Road (Fire Route Y), Blezard Valley  
Maintenance Class: 6  
Zoning: RU (Rural), A (Agriculture), Flood Plain  
Approx. length: 3.2 km  
Dwellings with direct access to Lumsden/Fire Route Y: 0

**PIN Ownership:**  
**Private**

**A**

## Vern Drive

**A**

**A(1)**

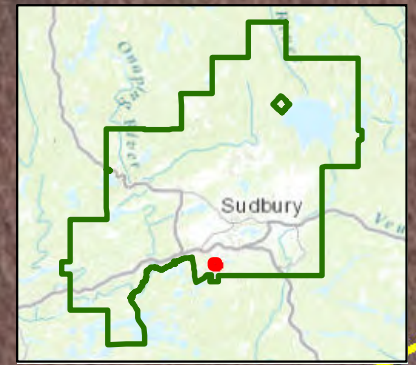


0 125 250 500  
Meters

June 30, 2021



# Seasonally Maintained Road Segments City of Greater Sudbury (Lammi's Road)



Lammi's Road, Broder Township  
Maintenance Class: 6  
Zoning: RU (Rural), SLS(Seasonal Limited Service)  
Approx. length: 0.23 km  
Dwellings with direct access to Lammi's Road: 7

PIN Ownership:  
Private

Lammi's Road

Sandy Cove Road

RU

R1-2

SLS

SLS

SLS



0 25 50 100  
Meters

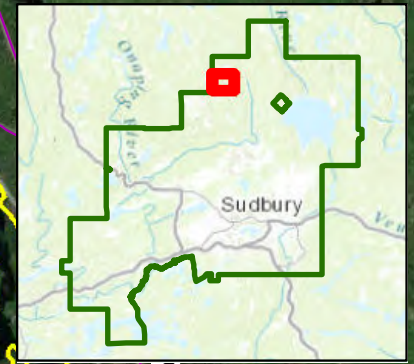
June 30, 2021

## Legend

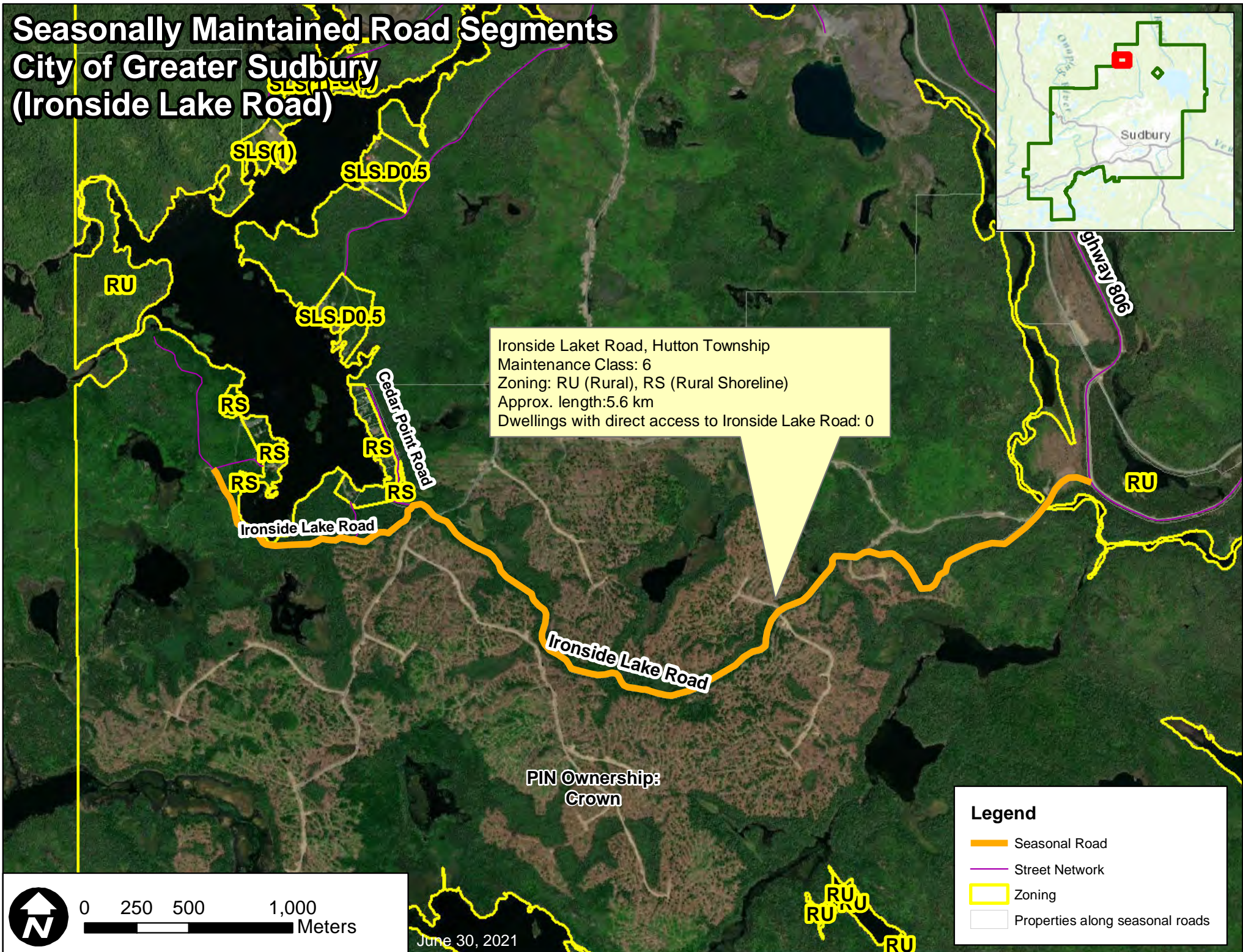
- Seasonal Road
- Zoning
- Properties along seasonal roads
- Street Network



# Seasonally Maintained Road Segments City of Greater Sudbury (Ironside Lake Road)



Ironside Laket Road, Hutton Township  
Maintenance Class: 6  
Zoning: RU (Rural), RS (Rural Shoreline)  
Approx. length: 5.6 km  
Dwellings with direct access to Ironside Lake Road: 0



0 250 500 1,000  
Meters

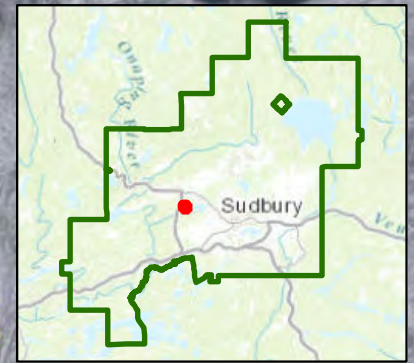
June 30, 2021

**Legend**

- Seasonal Road
- Street Network
- Zoning
- Properties along seasonal roads



# Seasonally Maintained Road Segments City of Greater Sudbury (Del Street)



9

Couture Street

SLS

SLS

RU

Del Street, Chelmsford  
Maintenance Class: 6  
Zoning: SLS (Seasonal Limited Service), RU (Rural)  
Approximate length: 230 m  
# of dwellings with direct access to Del Street: 11

Del Street

Perreault Drive

SLS



0 25 50 100  
Meters

June 30, 2021

**Legend**

- Seasonal Road
- Street Network
- Subject properties
- Zoning