

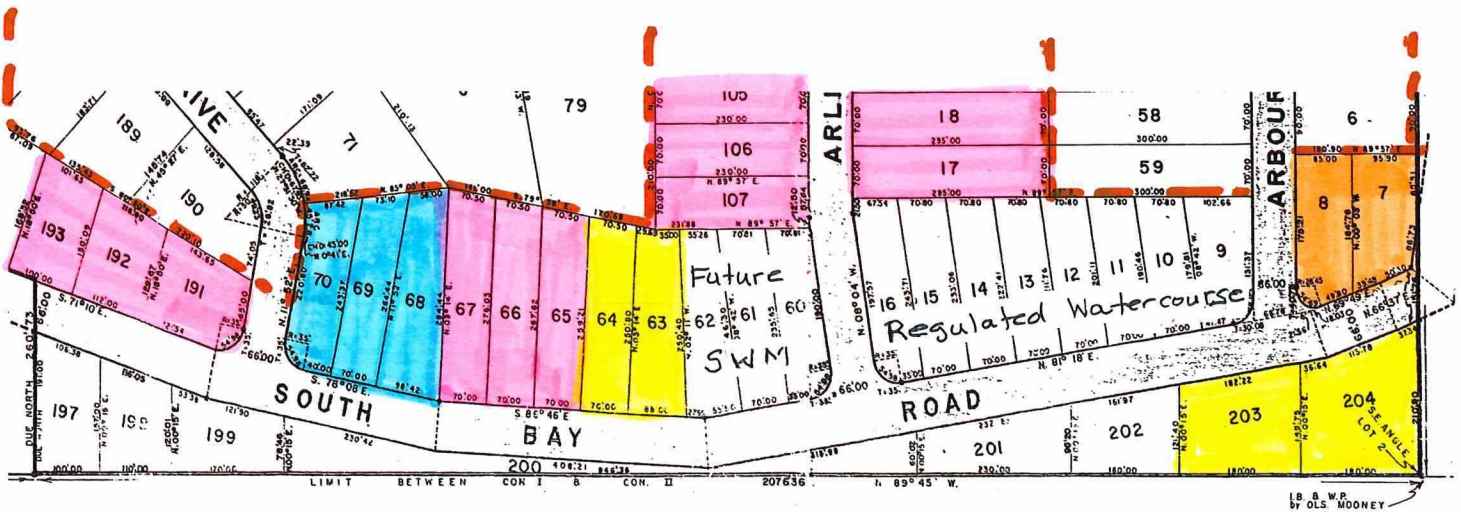
SCHEDULE "A"

Dimensions of the Subject Lands

Lot	Frontage (m)	Depth (m)	Area (m ²)
63	21.3	76.4	1,698.4
64	26.8	76.2	1,635.8
203	55.5	45.6	2,196.4
204	57.4	64.3	2,748.6

R1-3 Zone Standards and the Subject Lands

R1-3 Zone Standard	Standard	Lots 63+64	Lot 203	Lot 204
Min Lot Area (m ²)	1,000	3,334	2,196	2,749
Min Lot Frontage (m)	30	48.1	55.5	57.4
Min Lot Depth (m)	30	76	45.6	64.3



- Lots to be removed from Deeming By-Law 88-223 [Lots 63 + 64 to be consolidated to 1 lot]
- Transfer to City of Greater Sudbury [Location of South Bay Road]
- Vacant Lots Currently Available to Construct Single Family Homes [Building Permit Available]
- Existing Homes
- Future Development with Municipal Services

SCHEDULE "A"

CHARGE'S CERTIFICATE:

I, ALPHEUS SHUTE, the registered owner of charge # 19797, hereby consent to the registration of this plan.
 Suburb, Ont. *Alpheus Shute*
 June, 19th, 1956

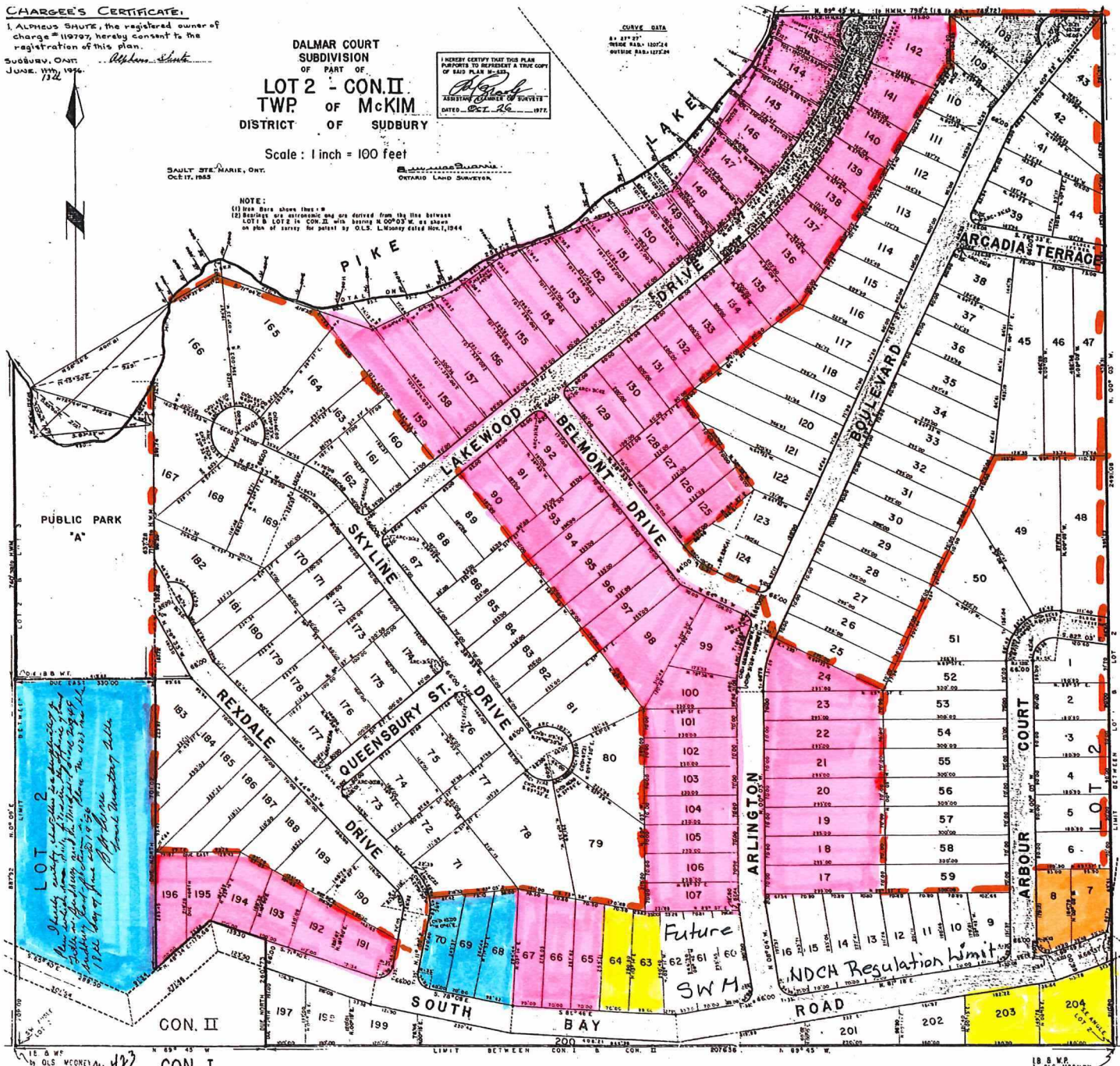
DALMAR COURT
 SUBDIVISION
 OF PART OF
LOT 2 - CON. II
 TWP OF **McKIM**
 DISTRICT OF **SUDBURY**

I HEREBY CERTIFY THAT THIS PLAN PURPORTS TO REPRESENT A TRUE COPY OF THE PLAN RECORDED
Alpheus Shute
 ASSISTANT CLERK OF COURTS
 DATED: DEC. 26, 1956

Scale: 1 inch = 100 feet

SAULT STE. MARIE, ONT. OCT. 17, 1945
 O. L. S. MURPHY
 ONTARIO LAND SURVEYOR

NOTE:
 (1) Iron Nails above lines W
 (2) Bearings are electronic and are derived from the line between LOT 1 & LOT 2 in CON. II with bearing N 00° 03' W, as shown on plan of survey for Lot 2 by O.L.S. L. Murphy dated Nov. 1, 1944



- Lots to be removed from Deeming By-Law 88-223 [Lots 63 + 64 to be consolidated to 1 lot]
- Transfer to City of Greater Sudbury [Location of South Bay Road]
- Vacant Lots Currently Available to Construct Single Family Homes [Building Permit Available]
- Existing Homes
- Future Development with Municipal Services