

Parking Restrictions – Panache North Shore Road, Walden

Presented To:	Operations Committee
Meeting Date:	November 15, 2021
Type:	Managers' Reports
Prepared by:	Ryan Purdy Infrastructure Capital Planning
Recommended by:	General Manager of Growth and Infrastructure

Report Summary

This report provides a recommendation regarding restricting parking on the north side of Panache North Shore Road, west of Panache Lake Road.

Resolution

THAT the City of Greater Sudbury prohibits parking on the north side of Panache North Shore Road from Panache Lake Road to 500 meters west of Panache Lake Road as outlined in the report entitled “Parking Restrictions – Panache North Shore Road, Walden”, from the General Manager of Growth and Infrastructure, presented at the Operations Committee meeting on November 15, 2021;

AND THAT the City of Greater Sudbury directs staff to prepare a by-law to amend Traffic and Parking By-Law 2010-1 to implement the recommended changes.

Relationship to the Strategic Plan, Health Impact Assessment and Community Energy & Emissions Plan (CEEP)

This report refers to operational matters.

Financial Implications

Recommendations of this report will be carried out within the existing approved budget and staffing resources.

Background

In 2016, Transportation and Innovation Services staff received a request from area residents to restrict parking on Panache North Shore Road due to the difficulties they were having travelling on Panache North Shore Road and accessing the waste transfer site. As a result, parking was restricted on the south side of

Panache North Shore Road. Recently, Transportation and Innovation Services staff have received a new request from residents and the ward councilor to further restrict parking on the north side of Panache North Shore Road due to continuing concerns with vehicles parked on the road.

Analysis

Panache North Shore Road is located at the south end of Panache Lake Road (Municipal Road 10) in the former Town of Walden (see Figure 1 below). This gravel rural roadway has an operating width of approximately 6 meters. Currently parking is restricted on the south side of Panache North Shore Road from Panache Lake Road to 500 meters west of Panache Lake Road.

On the east side of Panache Lake Road and opposite Panache North Shore Road is the Penage Bay Marina. The marina charges for parking and as a result, users of the marina are parking their vehicles and trailers on Panache North Shore Road.

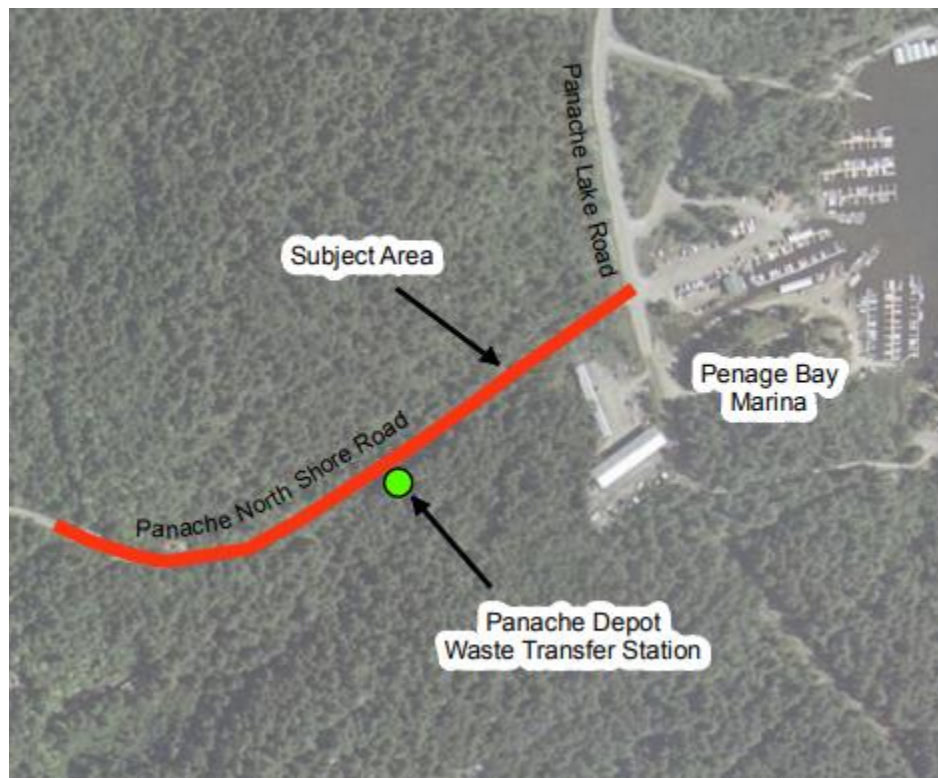


Figure 1 – Location Map

The primary function of a public road is for the safe and efficient movement of traffic. On-street parking is usually permitted when this criteria is met. The current parking restrictions on the south side of Panache North Shore road have not resolved the issue residents encounter when driving on the road and trying to access the waste transfer site.

Next Steps

To improve safety, it is recommended that parking be prohibited at all times along the north side of Panache North Shore Road from Panache Lake Road to 500 meters west of Panache Lake Road. Councilor Vagnini has indicated his support for this recommendation.

Resources Cited

<https://pub-greatersudbury.escribemeetings.com/filestream.ashx?documentid=10691>