

## **Parking Restrictions – St Agnes Street, Azilda**

Presented To:	Operations Committee
Meeting Date:	June 20, 2022
Type:	Managers' Reports
Prepared by:	Ryan Purdy Infrastructure Capital Planning
Recommended by:	General Manager of Growth and Infrastructure

## **Report Summary**

The report provides a recommendation regarding safety concerns along a section of St. Agnes Street, Azilda.

## **Resolution**

THAT the City of Greater Sudbury prohibits parking on the north side and south side of St. Agnes Street from Brabant Street to 170 metres east of Brabant Street as outlined in the report entitled “Parking Restrictions – St. Agnes Street, Azilda”, from the General Manager of Growth and Infrastructure, presented at the Operations Committee meeting on June 20, 2022;

AND THAT the City of Greater Sudbury directs staff to prepare a by-law to amend Traffic and Parking By-Law 2010-1 in the City of Greater Sudbury to implement the recommended changes.

## **Relationship to the Strategic Plan, Health Impact Assessment and Community Energy & Emissions Plan (CEEP)**

This report refers to operational matters.

## **Financial Implications**

Recommendations of this report will be carried out within the existing approved budget and staffing resources.

## **Background**

In December 2021, Councillor McCausland received a request from the Azilda Community Action Network to restriction parking on a section of St. Agnes Street in Azilda as indicated in Figure 1 below.

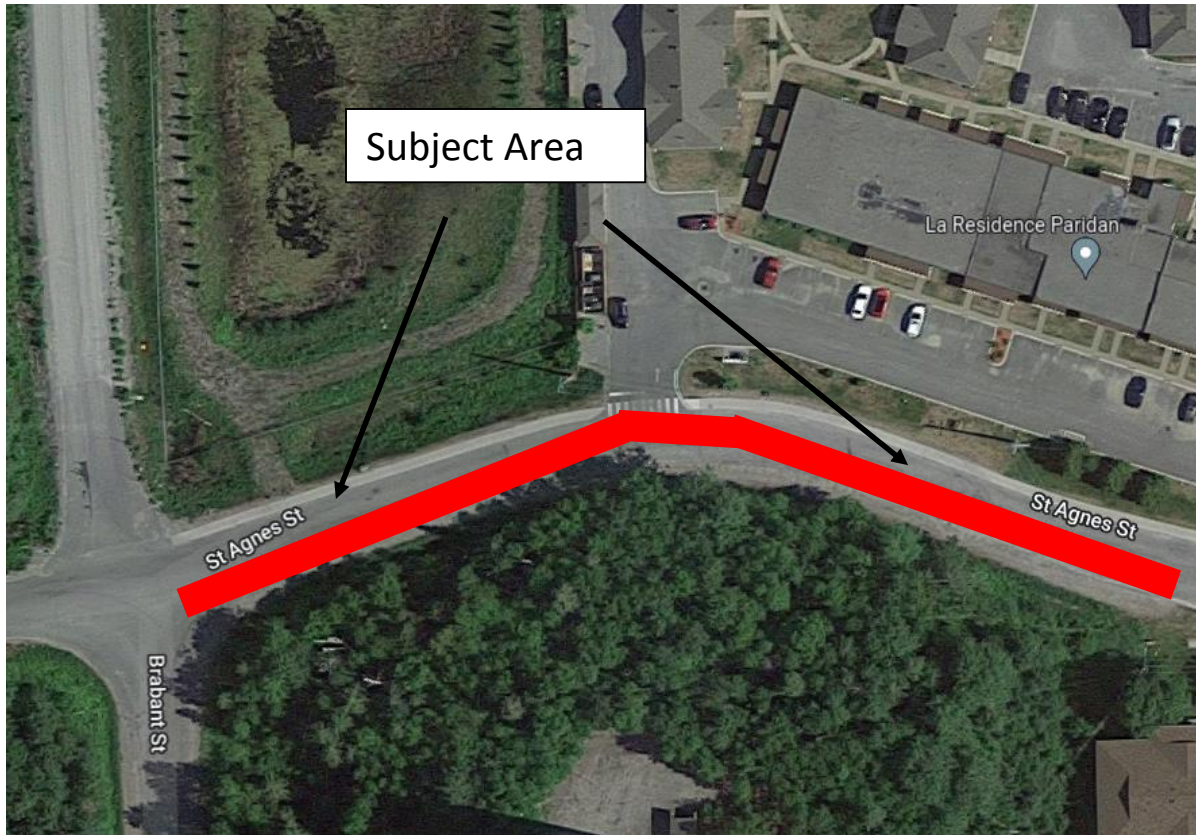


Figure 1: St. Agnes Street Azilda

Residents are concerned about the narrowing of St. Agnes Street around a horizontal curve when vehicles are parked on both sides of the road. This happens often when residents of La Residence Paridan park on the street when the snow is being removed from the parking lot. Figure 2 shows a photo of the Subject Area and the curve in the road.

St. Agnes Street is a local roadway located in Azilda and is constructed to an urban standard on the north side of the road and a rural standard on the south side of the road with an asphalt surface width of 7.5 meters. On street parking is currently permitted on both sides of St. Agnes Street.

#### Analysis

Staff met with Councillor McCausland and the manager of La Residence Paridan on site. The manager informed staff that he was approached by an officer from the Greater Sudbury Police Service who had informed him the parked cars in the Subject Area were causing a hazard on St. Agnes Street. Based on that feedback, the manager created a map to show residents where they should avoid parking when snow removal was occurring. Despite advising residents to not park in this area, vehicles continue to be parked in the area.

Staff also consulted with Linear Infrastructure Services staff who advised that they were experiencing difficulties clearing snow when vehicles were parked on both sides of St. Agnes Street in the Subject Area.

The primary function of a public road is for the safe and efficient movement of traffic. On-street parking is usually permitted when this criterion is met. When vehicles are parked in the Subject Area in (Figure 1), eastbound and westbound vehicles cannot see vehicles approaching from the opposite direction and have to travel in the middle of the road without knowing if there is oncoming traffic.

### Next Steps

To improve safety on St. Agnes Street, staff recommends that parking be restricted on the north side and south side of St. Agnes Street from Brabant Street to 170 metres east of Brabant Street. Councillor McCausland has indicated his support of the recommendation.

### **Resources Cited**