

PLAN OF SURVEY OF  
PART OF LOTS 8 AND 9, CONCESSION 5  
GEOGRAPHIC TOWNSHIP OF BLEZARD  
CITY OF GREATER SUDBURY  
DISTRICT OF SUDBURY  
TULLOCH GEOMATICS INC., O.L.S.  
2022

5m 0 5 25m  
SCALE 1 : 500

THE INTENDED PLOT SIZE OF THIS PLAN IS 610mm IN WIDTH BY 914mm IN HEIGHT WHEN PLOTTED AT A SCALE OF 1:500.

**BEARING NOTE:**  
BEARINGS ARE UTM GRID AND ARE DERIVED FROM OBSERVED REFERENCE POINTS A AND B BY REAL TIME NETWORK (RTN) OBSERVATIONS, UTM ZONE 17, NAD83 (CSRS)(2010.0), HAVING A BEARING OF N0°43'35"W AS SHOWN HEREON.

**METRIC:**  
DISTANCES AND COORDINATES SHOWN ON THIS PLAN ARE IN METRES AND CAN BE CONVERTED TO FEET BY DIVIDING BY 0.3048.

**DISTANCE NOTE:**  
GROUND DISTANCES SHOWN HEREON CAN BE CONVERTED TO UTM GRID BY MULTIPLYING BY A COMBINED SCALE FACTOR OF 0.999561.

**CONVERGENCE NOTE:**  
NO CONVERGENCE FACTOR HAS BEEN APPLIED TO THE GRID BEARINGS ON UNDERLYING PLANS.

SCHEDULE				
PART	LOT	CONCESSION	PIN	AREA
1	PART OF LOT 8	5	PART OF PIN 73501-2249	1.200 ha
2	PART OF LOT 9		PART OF PIN 73501-2247	0.021 ha
3				0.017 ha

PART 1: SUBJECT TO EASEMENT AS IN LT119781  
PART 3: SUBJECT TO EASEMENTS AS IN LT902449, LT902450 & LT902451

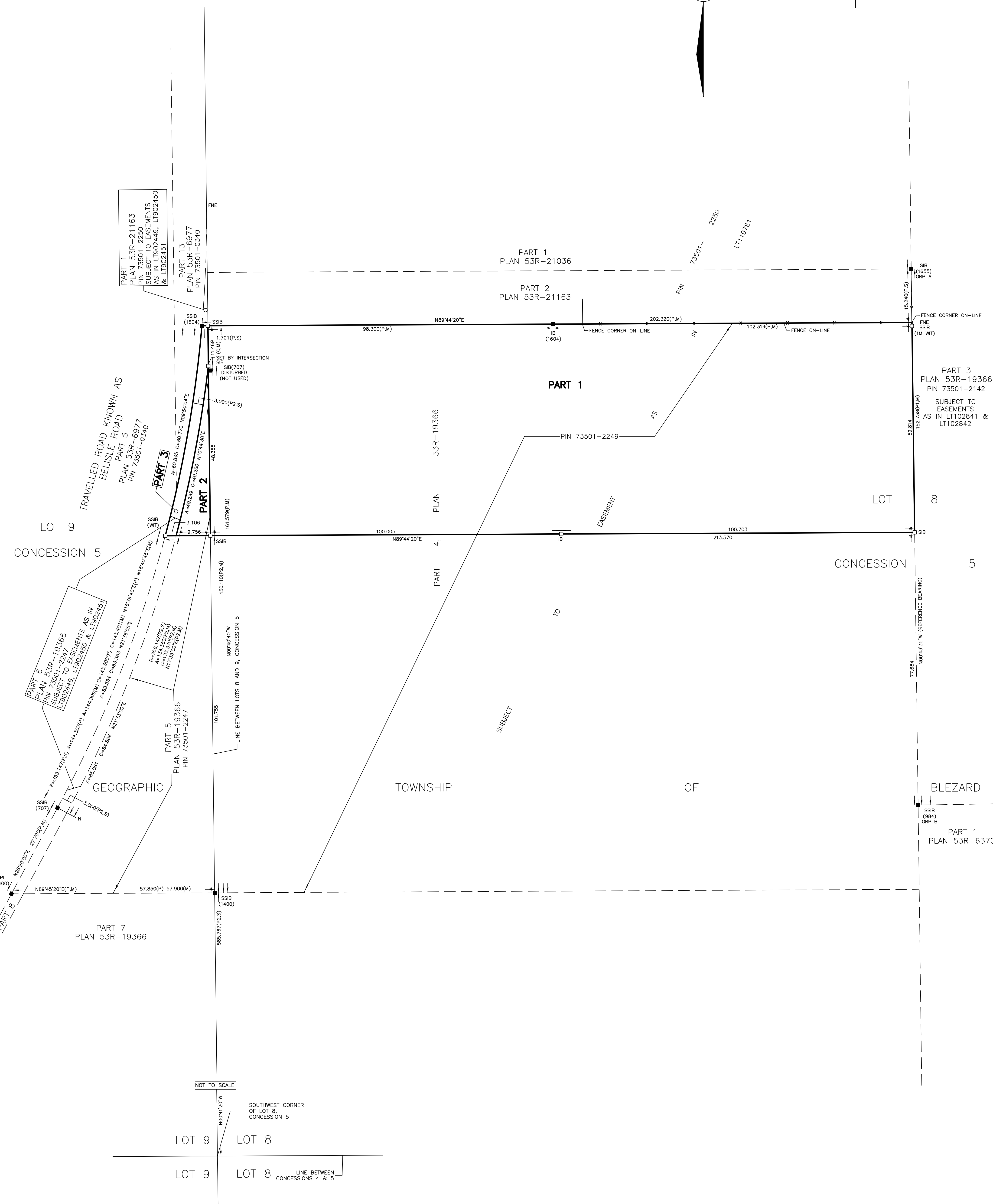
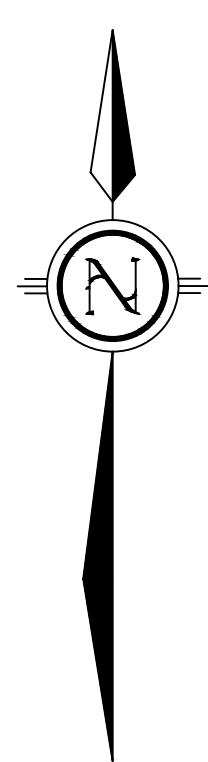
**PLAN 53R-21683**

Received and deposited

June 27<sup>th</sup>, 2022

Erin Noble

Representative for the  
Land Registrar for the  
Land Titles Division of  
Sudbury (No.53)



**SURVEYOR'S CERTIFICATE**

I CERTIFY THAT:  
(1) THIS SURVEY AND PLAN ARE CORRECT AND IN ACCORDANCE WITH THE SURVEYS ACT, THE SURVEYORS ACT AND THE LAND TITLES ACT AND THE REGULATIONS MADE UNDER THEM.  
(2) THE SURVEY WAS COMPLETED ON THE 24th DAY OF MAY, 2022.

*N. J. McFadden*  
NICHOLAS J. MCFADZEN  
ONTARIO LAND SURVEYOR

JUNE 23, 2022  
DATE

THIS PLAN OF SURVEY RELATES TO AOLS SUBMISSION FORM NUMBER 2191334.

**LEGEND:**

- DENOTES FOUND MONUMENT
- DENOTES PLANTED MONUMENT
- SSIB DENOTES STANDARD IRON BAR 0.025 x 0.025 x 1.22
- IB DENOTES STANDARD IRON BAR 0.025 x 0.025 x 0.61
- RPL DENOTES IRON BAR 0.015 x 0.015 x 0.61
- P DENOTES ROCK PLUG 0.015 x 0.015 x 0.15
- P1 DENOTES PLAN 53R-21163
- P2 DENOTES PLAN 53R-21036
- M DENOTES PLAN 53R-19366
- S DENOTES MEASURED
- 707 DENOTES SET
- 984 DENOTES LANE & LANE LTD., O.L.S.
- 1400 DENOTES M. R. MAHER, O.L.S.
- 1604 DENOTES D. S. DORLAND LTD., O.L.S.
- 1655 DENOTES TULLOCH GEOMATICS INC., O.L.S.
- ORP DENOTES TERRY DEL BOSCO, O.L.S.
- WIT DENOTES OBSERVED REFERENCE POINT
- NT DENOTES WITNESS
- FNE DENOTES NON-TANGENTIAL
- DENOTES FOUND NO EVIDENCE

INTEGRATION COORDINATE TABLE		
COORDINATES ARE DERIVED FROM GPS OBSERVATION USING REAL TIME NETWORK (RTN) AND ARE REFERRED TO UTM ZONE 17 (81° WEST LONGITUDE), NAD83(CSRS)(2010).		
COORDINATE VALUES ARE TO URBAN ACCURACY IN ACCORDANCE WITH SECTION 14 (2) OF O.REG 216/10.		
OBSERVED REFERENCE POINTS	NORTHING	EASTING
A	5160855.70	498030.33
B	5160703.01	498032.30
COORDINATES CANNOT, IN THEMSELVES, BE USED TO RE-ESTABLISH THE CORNERS OR BOUNDARIES SHOWN ON THIS PLAN.		

	TULLOCH GEOMATICS INC.
	1942 REGENT ST.   T. 705 671.2295
	SUDBURY, ON   F. 705 671.9477
	P3E 5V5   TF. 800 810.1937
sudbury@tulloch.ca	
DRAWN BY: UK	FILE: 222295