

HIGHWAY NO. 69
(MID PLAN P-3066-11)

POTVIN CRES.

PART 1, R16
PARCEL
PLAN SR-1616
S.E.S.

PART 2, R16
PARCEL
PLAN SR-1616
S.E.S.

PART 3, R16
PARCEL
PLAN SR-1616
S.E.S.

PART 4, R16
PARCEL
PLAN SR-1616
S.E.S.

PART 5, R16
PARCEL
PLAN SR-1616
S.E.S.

PART 6, R16
PARCEL
PLAN SR-1616
S.E.S.

PART 7, R16
PARCEL
PLAN SR-1616
S.E.S.

PART 8, R16
PARCEL
PLAN SR-1616
S.E.S.

PART 9, R16
PARCEL
PLAN SR-1616
S.E.S.

PART 10, R16
PARCEL
PLAN SR-1616
S.E.S.

PART 11, R16
PARCEL
PLAN SR-1616
S.E.S.

PART 12, R16
PARCEL
PLAN SR-1616
S.E.S.

PART 13, R16
PARCEL
PLAN SR-1616
S.E.S.

PART 14, R16
PARCEL
PLAN SR-1616
S.E.S.

PART 15, R16
PARCEL
PLAN SR-1616
S.E.S.

PART 16, R16
PARCEL
PLAN SR-1616
S.E.S.

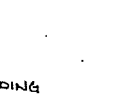
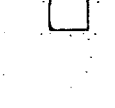
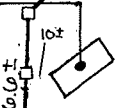
PART 17, R16
PARCEL
PLAN SR-1616
S.E.S.

PART 18, R16
PARCEL
PLAN SR-1616
S.E.S.

PART 19, R16
PARCEL
PLAN SR-1616
S.E.S.

PART 20, R16
PARCEL
PLAN SR-1616
S.E.S.

CARPENTRY SHOP
(EAST HALF TO BE
TEMPORARILY CONVERTED
TO A GARDEN SUITE)



TO BE
REZONED

PIN 73479-0109

LOT 11
CON 5

PIN 73479-0066

PIN 73479-0130

DILL TOWNSHIP

DETAIL SKETCH

SCALE 1:2000 METRIC

LINE BETWEEN THE EAST AND WEST PARTS OF LOT 11

