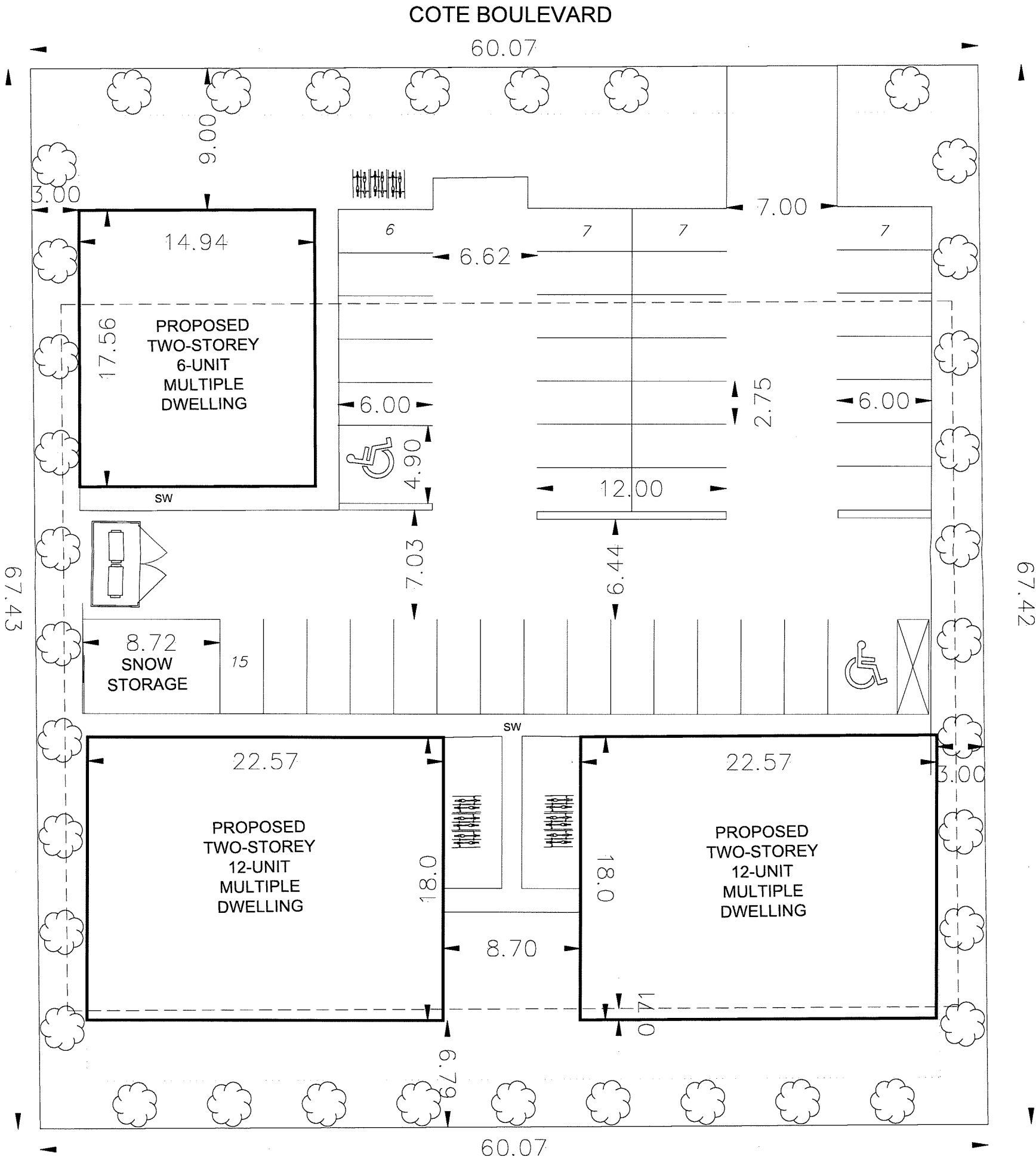
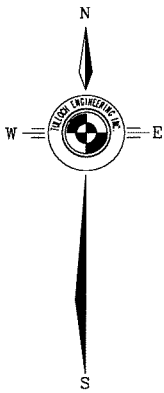


CONCEPTUAL SKETCH
389 COTE BLVD
HANMER
GEOGRAPHIC TOWNSHIP OF CAPREOL
CITY OF GREATER SUDBURY

TULLOCH ENGINEERING

- NOTES:
- (1) 2 TWO-STOREY 12-UNIT MULTIPLE DWELLINGS
 - (2) 1 TWO-STOREY 6-UNIT MULTIPLE DWELLING
 - (3) REQUIRED PARKING: 40.5 SPACES
 - (4) PROPOSED PARKING: 42 SPACES PROVIDED



1942 REGENT STREET SUDBURY, ONTARIO
UNIT L P3E SV5 705-671-2295

DRAWN BY: VS FILE: 211819

CAUTION

THE PROPERTY BOUNDARIES ILLUSTRATED ON THIS PLAN
HAVE BEEN COMPILED FROM REGISTRY PLANS AND HAVE
NOT BEEN CONFIRMED.

THIS SKETCH IS NOT A PLAN OF SURVEY AND SHALL NOT
BE USED EXCEPT FOR THE PURPOSE INDICATED IN THE
TITLE.

NO PERSON MAY COPY, REPRODUCE, DISTRIBUTE OR ALTER
THIS PLAN IN WHOLE OR IN PART WITHOUT THE WRITTEN
PERMISSION OF TULLOCH ENGINEERING. © TULLOCH
ENGINEERING, 2021.