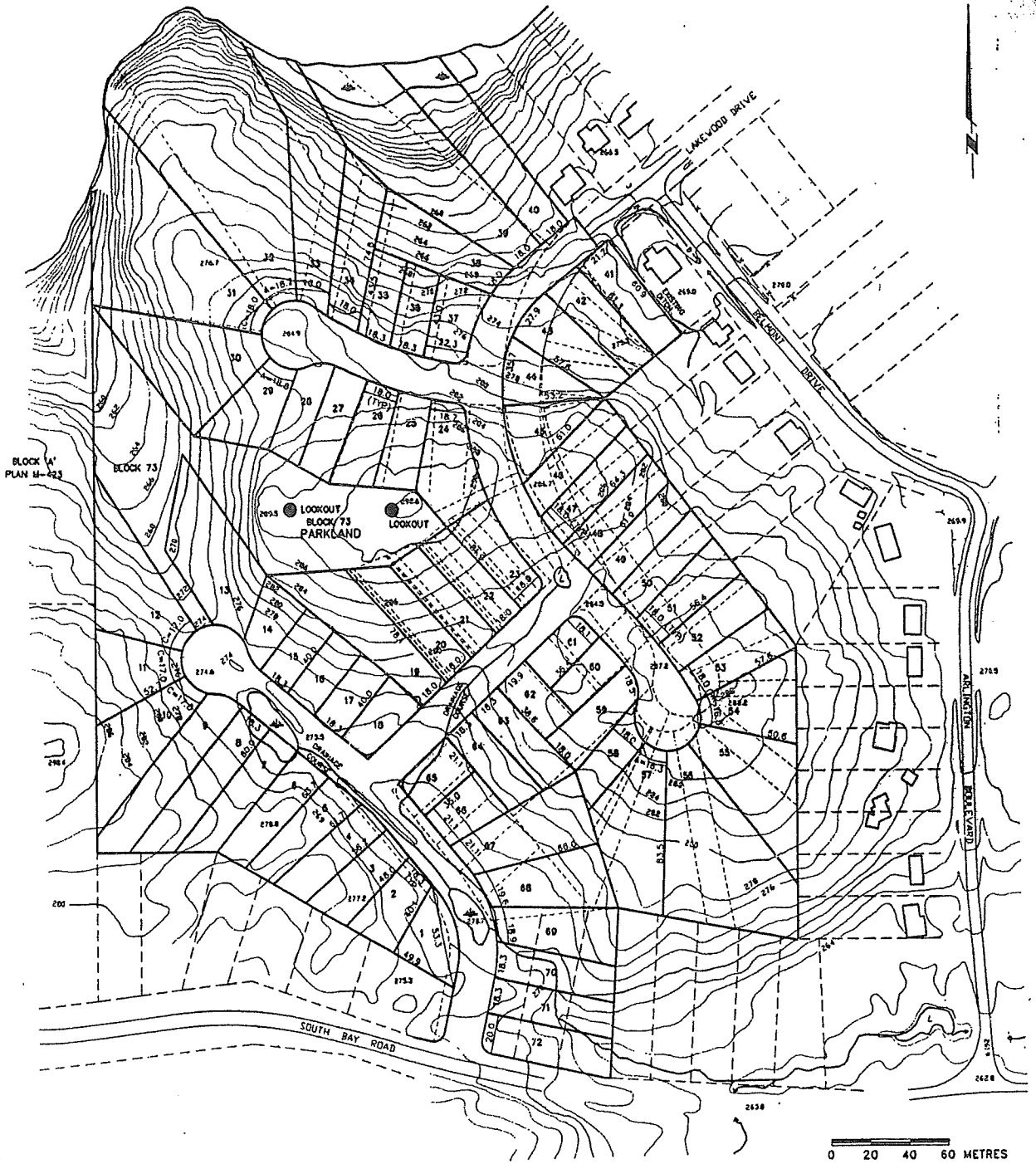


BETHEL

LAKE



40

**DALRON HOMES**

## TWIN LAKES SUBDIVISION

### REVISED LAYOUT

2003-04-30  
 2003-05-05  
 2003-05-27  
 2004-02-20

 **DENNIS CONSULTANTS**  
 CIVIL ENGINEERS  
 a division of R.V. Anderson Associates Limited

*Issued Mar. 29/04*

<b>PARKLAND DATA</b>	BLOCK 'A' = 179 ha. BLOCK 73 = 0.95 ha.
TOTAL PARKLAND DEDICATION = 274 ha. OR 21% OF THE AREA OF APPLICATION	
PREVIOUS PARKLAND DEDICATION = 103 ha. OR 8% OF THE AREA OF APPLICATION	