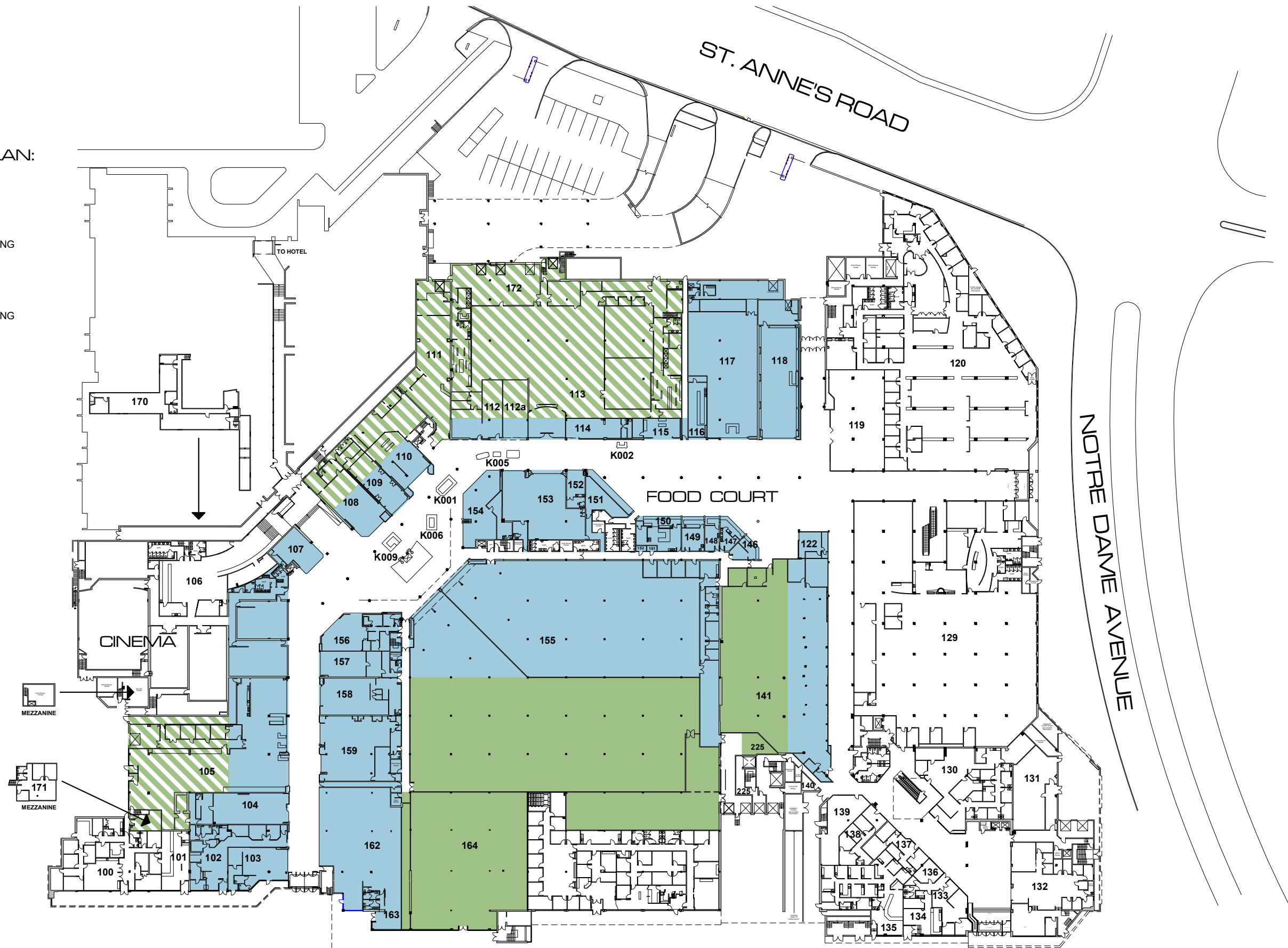


LEGEND TO FLOOR PLAN:

- DENOTES EXISTING RETAIL
81,875 SQ.FT.
- DENOTES PROPOSED WAREHOUSING
AND DISTRIBUTION CENTRE
41,735 SQ.FT.
- DENOTES PROPOSED WAREHOUSING
AND DISTRIBUTION CENTRE
OR
SELF-STORAGE
33,800 SQ.FT.



SUMMARY OF CO-ORDINATES OF POINTS ON PERIMETER OF UNITS SHOWN ON THIS PLAN

STA.	LATITUDE (NORTH)	DEPARTURE (EAST)
1-2	6,875.234	1,867.963
1-3	6,899.234	2,202.701
2-1	6,949.249	1,383.740
2-2	7,133.379	1,383.378
3-1	6,875.234	1,319.264
3-2	6,949.123	1,319.370
4-1	6,875.577	1,381.414
9-1	7,133.377	1,383.564
9-2	7,199.013	1,383.564
12-1	7,523.361	1,601.255
12-2	7,653.887	1,590.236
12-3	7,626.964	1,683.030
12-4	7,622.276	1,681.292
14-1	6,899.234	1,444.620
14-2	7,007.723	1,444.620
14-3	7,036.002	1,418.566
14-4	7,133.162	1,403.547
14-5	7,512.090	1,403.608
14-6	7,511.344	1,606.206
14-7	7,612.584	1,707.447
14-8	7,494.701	2,025.508
14-9	7,267.850	2,025.508
14-10	7,132.850	2,025.508
14-11	7,132.850	2,003.508
14-12	6,943.850	2,003.508
14-13	6,943.850	2,027.508
14-14	6,899.234	2,027.508
23-1	7,765.493	3,866.646
23-2	7,720.747	717.780
23-3	7,723.435	719.519

PLAN OF SURVEY OF
 ALL OF PARTS 2, 5, 6, 7, 10, 11, 13, 15, 28, 29, 30, 31, 32, 33, 34, 35, 39, 42,
 AND PARTS OF PARTS 1, 3, 4, 8, 14, 16, 27, 36, 37, 38, 40, 41, 43, 45, 48;
 PLAN SR-2539
 AND ALL OF PART I, PLAN SR-2772
 CITY OF SUDBURY
 DISTRICT OF SUDBURY
 SCALE 1" = 40'
 D. W. ENDELMAN O.S.S., JULY 15, 1969.

NOTES:
 1) ALL BEARINGS SHOWN HEREON ARE ASTRONOMIC AND DERIVED FROM THE BEARING FROM CONTROL STATION 640023 TO CONTROL STATION 640041 OF N 33° 06' 53" W, DETERMINED FROM THEIR CO-ORDINATE VALUES OBTAINED BY THE DEPARTMENT OF MINES & TECHNICAL SURVEYS, CANADA, AND SHOWN ON A PLAN PREPARED IN 1954. THESE BEARINGS ARE REFERRED TO THE MERIDIAN AT 81° WEST LONGITUDE WHICH IS THE CENTRAL MERIDIAN FOR ZONE 12, ONTARIO CO-ORDINATE SYSTEM (TRANSVERSE MERCATOR PROJECTION - 12° ZONE).
 2) CO-ORDINATE VALUES: INDICATED ON THIS PLAN ARE BASED ON THE ONTARIO CO-ORDINATE SYSTEM AS FOLLOWS: LATITUDE SHOWN AS 43° 52' 40.80" N; LONGITUDE SHOWN AS 81° 00' 00.00" W. DEPARTURE SHOWN AS 3019.215 E ON ONT. CO-ORD. SYSTEM. BASIS OF ONT. CO-ORD. SYSTEM IS AS FOLLOWS: EQUATOR = 0-00 NORTH; 81° WEST LONG. = 1,000,000.00 EAST.
 3) ALL LINEAR MEASUREMENTS ARE RELATED TO A DATUM PLANE AT MEAN SEA LEVEL.

SURVEYORS CERTIFICATE:
 I HEREBY CERTIFY
 1) THAT THIS SURVEY AND PLAN ARE CORRECT AND IN ACCORDANCE WITH THE SURVEYS ACT AND THE LAND TITLES ACT AND THE REGULATIONS MADE THEREUNDER.
 2) THAT I WAS PRESENT AT AND DID PERSONALLY SUPERVISE THE SURVEY REPRESENTED BY THIS PLAN.
 3) THAT THE SURVEY WAS COMPLETED ON THE 15TH DAY OF JULY, 1969.
 JULY 15, 1969
 DATE
 D. W. ENDELMAN, O.S.S.

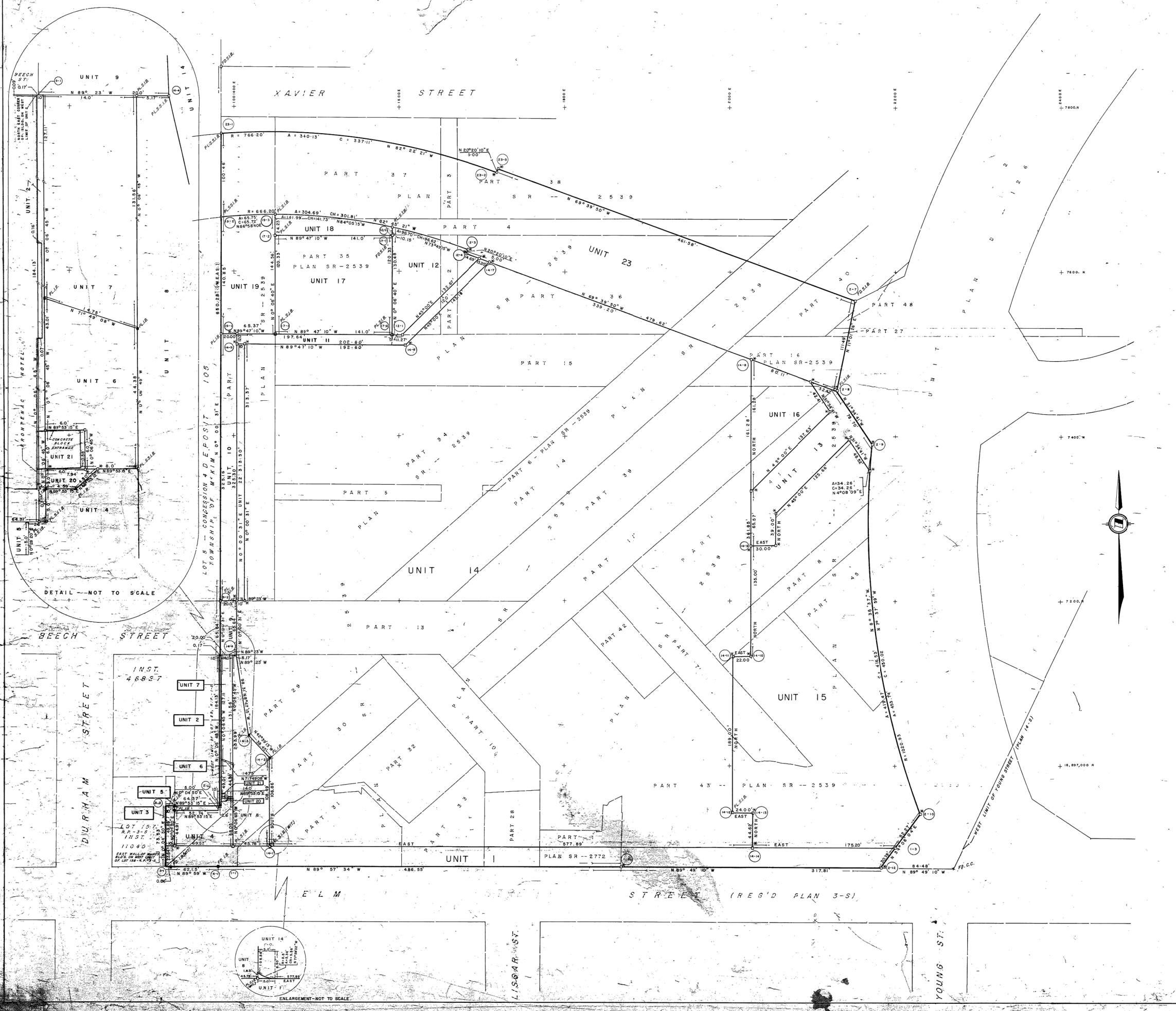
SUMMARY OF CONTROL STATIONS USED TO ESTABLISH POINTS INDICATED ON THIS PLAN

STATION	TYPE OF MONUMENT	CO-ORDINATES	GENERAL LOCATION
640023	CON. MON. IN ROCK	5387.451 3834.284	NEAR HILL TOP TOWER NORTH OF VAN HORN ST.
640041	CON. MON. IN ROCK	6218.683 1774.297	NEAR HILL TOP EAST OF TANSLEY ST.
E-1	BRASS PILE IN GROUND	6811.804 1338.544	NEAR ELB. ST. ENTRANCE TO WOODMORTH BLDG.
E-2	BRASS PILE IN GROUND	6811.884 2220.528	NEAR N.W. COR. GRANITE THE BLDG. - S. SIDE OF ELB. ST.
E-3	BRASS PILE IN GROUND	6173.874 1844.233	ON HILL TOP S.E. OF STATION 640041
E-4	S.I.B.	7430.243 3286.900	AT EAST END OF N. FENCE - NEAR WATER TOWER IN

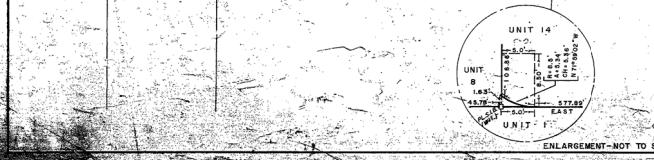
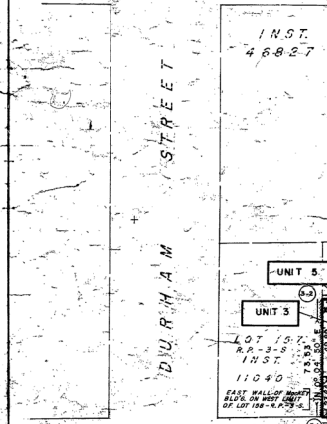
LEGEND:
 D.S.I.B. DENOTES 1" X 1" X 48" LONG IRON BAR
 O.S.I.B. DENOTES 1" X 1" X 24" LONG IRON BAR
 X.C.C. DENOTES CUT CROSS
 C.M. DENOTES POINT TO BE MONUMENTED (SEE NOTE).
 (12-3) DENOTES NUMBER OF SURVEY STATION.
 P.D. DENOTES MONUMENT FOUND.
 P.L. DENOTES MONUMENT PLANTED.
 I.B. DENOTES 5/8" X 5/8" X 24" LONG IRON BAR.

NOTE:
 WHERE, BECAUSE OF THE NATURE OF THE LOCATION OF POINTS MARKED THAT IT IS IMPRACTICABLE TO DEFINE THE SAID POINTS WITH SURVEY MONUMENTS BY THE 15TH DAY OF JULY, 1969, SUCH MONUMENTATION AS SHOWN ON THIS PLAN WILL BE COMPLETED NOT LATER THAN THE 15TH DAY OF NOVEMBER, 1970.
 JULY 15, 1969
 DATE
 D. W. ENDELMAN, O.S.S.
 R. T. LANE, O.S.S.

THIS SURVEY AND PLAN HAS BEEN PREPARED BY D. W. ENDELMAN, L.T. LANE, AND R. T. LANE, ONTARIO LAND SURVEYORS, SUDBURY, ONTARIO AT THE REQUEST OF THE URBAN RENEWAL COMMISSION OF THE CITY OF SUDBURY.



DETAIL - NOT TO SCALE



ENLARGEMENT - NOT TO SCALE