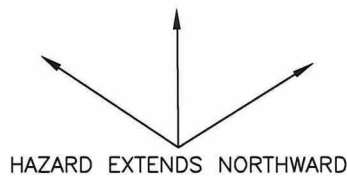
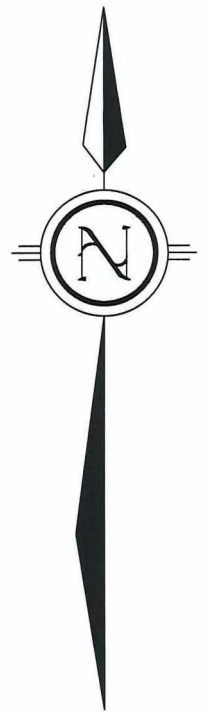


808.18

808.18

07808

PART 1, PLAN 53R-4322  
 P I N 7 3 5 0 5 - 0 3 6 0  
 SUBJECT TO SD217067



APPROXIMATE LOCATION OF CONSERVATION SUDBURY REGULATED AREA  
 SOUTH BANK, FLOOD ELEV. LEVEL = 288.65 (CGVD28)

RETAINED LOT  
 AREA = ±20.47ha

PART 1, PLAN 53R-15015

PART 9, PLAN 53R-17435

PART 8, PLAN 53R-17435

SEVERED LOT 6  
 AREA = ±2109.95m<sup>2</sup>

SEVERED LOT 5  
 AREA = ±2109.95m<sup>2</sup>

SEVERED LOT 4  
 AREA = ±2109.95m<sup>2</sup>

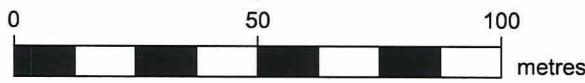
SEVERED LOT 3  
 AREA = ±2109.95m<sup>2</sup>

SEVERED LOT 2  
 AREA = ±2109.95m<sup>2</sup>

SEVERED LOT 1  
 AREA = ±2109.95m<sup>2</sup>

TRAVELLED ROAD KNOWN AS DOMINION DRIVE

APPROX. LOCATION OF  
 WATERMAIN / SAN. CUTOFF



SCALE 1:1500

CAUTION

THE PROPERTY BOUNDARIES ILLUSTRATED ON THIS PLAN  
 HAVE BEEN COMPILED FROM REGISTRY PLANS AND HAVE  
 NOT BEEN CONFIRMED.  
 THIS SKETCH IS NOT A PLAN OF SURVEY AND SHALL NOT  
 BE USED EXCEPT FOR THE PURPOSE INDICATED IN THE  
 TITLE.  
 NO PERSON MAY COPY, REPRODUCE, DISTRIBUTE OR ALTER  
 THIS PLAN IN WHOLE OR IN PART WITHOUT THE WRITTEN  
 PERMISSION OF TULLOCH ENGINEERING. © TULLOCH  
 ENGINEERING, 2024.

APPROX. EXTENT  
 OF LANDS  
 ZONED R1-5  
 TO THE SOUTH

PCL 31249

PCL 23446

TRAVELLED ROAD KNOWN AS LAROCQUE AVENUE

10" SAN.  
 6" WATERMAIN

TRAVELLED ROAD  
 KNOWN AS  
 VELMA STREET



T: 705-522-6303  
 sudbury@tulloch.ca

131 FIELDING ROAD  
 LIVELY, ONTARIO  
 P3Y 1L7

PROJECT:

**Dominion Drive Severances**

DRAWING:

**Severance Sketch  
 For OPA, ZBLA  
 & Consent Submission**

No.	DATE	BY	ISSUES / REVISIONS
DRAWN BY: AA/MDJ		CHECKED BY: AA/KJ	
PROJECT No. :			22-1371
SCALE: 1:1500		DATE: July 30, 2024	