



* DISCLAIMER: ISSUED FOR PRELIMINARY DESIGN DISCUSSION ONLY

BUILDING B - CONDO TOWER

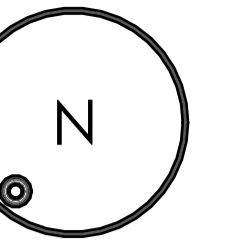
700 PARIS STREET, SUDBURY, ONTARIO

A · C · K
 architects
 STUDIO INC.

1ST FLOOR PLATE

DWG. No.
A2.1

SCALE: AS SHOWN
 DATE: FEB 10 2023
 PROJECT No.: 2021-144



2ND FLOOR PLATE

1" = 10'-0"

14,507 S.F

UNIT STATS
 1 BED - 1 UNITS
 2 BED - 11 UNITS
 3 BED - 3 UNITS
 TOTAL - 15 UNITS

* DISCLAIMER: ISSUED FOR PRELIMINARY DESIGN DISCUSSION ONLY

BUILDING B - CONDO TOWER

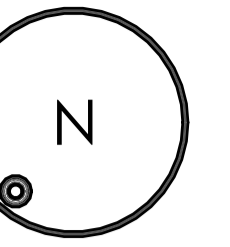
700 PARIS STREET, SUDBURY, ONTARIO

A · C · K
 architects
 STUDIO INC.

2ND FLOOR PLATE

DWG. No.
A2.2

SCALE: AS SHOWN
 DATE: FEB 10 2023
 PROJECT No.: 2021-144



3RD - 7TH FLOOR PLATE

1" = 10'-0"

16,443 S.F

UNIT STATS
 1 BED - 1 UNITS
 2 BED - 10 UNITS
 3 BED - 3 UNITS
 TOTAL - 14 UNITS

* DISCLAIMER: ISSUED FOR PRELIMINARY DESIGN DISCUSSION ONLY

BUILDING B - CONDO TOWER

700 PARIS STREET, SUDBURY, ONTARIO

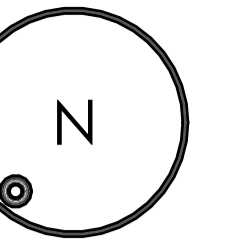
A · C · K
 architects
 STUDIO INC.

3RD-7TH FLOOR
 PLATE

DWG. No.

A2.3

SCALE: AS SHOWN
 DATE: FEB 10 2023
 PROJECT No.: 2021-144



8TH - 13TH FLOOR PLATE

1" = 10'-0"

13,361 S.F

UNIT STATS
 1 BED - 2 UNITS
 2 BED - 9 UNITS
 3 BED - 1 UNITS
 TOTAL - 12 UNITS

* DISCLAIMER: ISSUED FOR PRELIMINARY DESIGN DISCUSSION ONLY

BUILDING B - CONDO TOWER

700 PARIS STREET, SUDBURY, ONTARIO

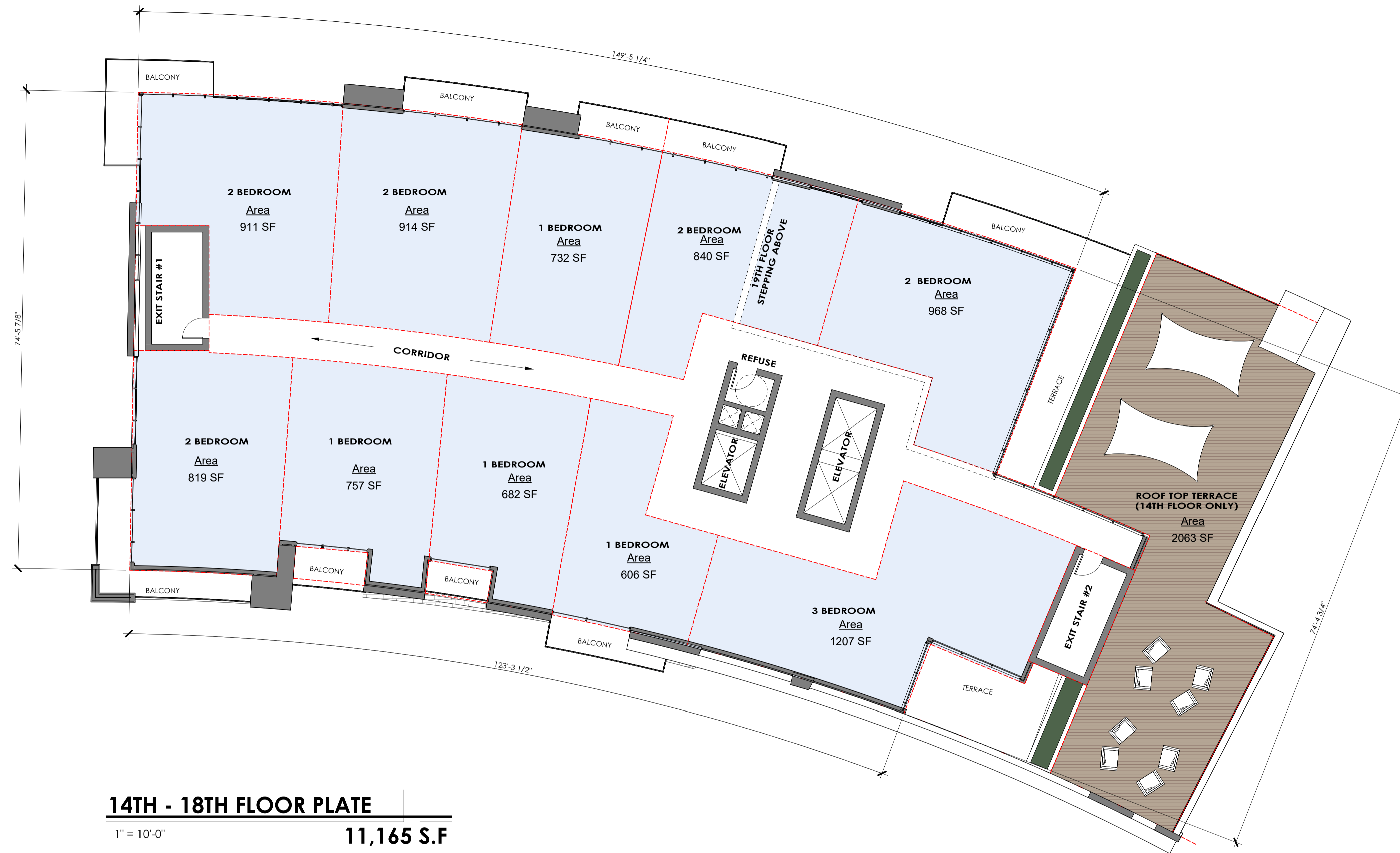
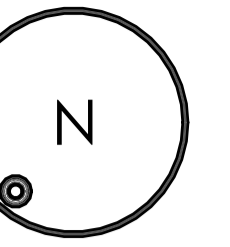
A · C · K
 architects
 STUDIO INC.

8TH - 13 FLOOR
 PLATE

DWG. No.

A2.4

SCALE: AS SHOWN
 DATE: FEB 10 2023
 PROJECT No.: 2021-144



14TH - 18TH FLOOR PLATE

1" = 10'-0"

11,165 S.F

UNIT STATS
 1 BED - 4 UNITS
 2 BED - 5 UNITS
 3 BED - 1 UNITS
 TOTAL - 10 UNITS

* DISCLAIMER: ISSUED FOR PRELIMINARY DESIGN DISCUSSION ONLY

BUILDING B - CONDO TOWER

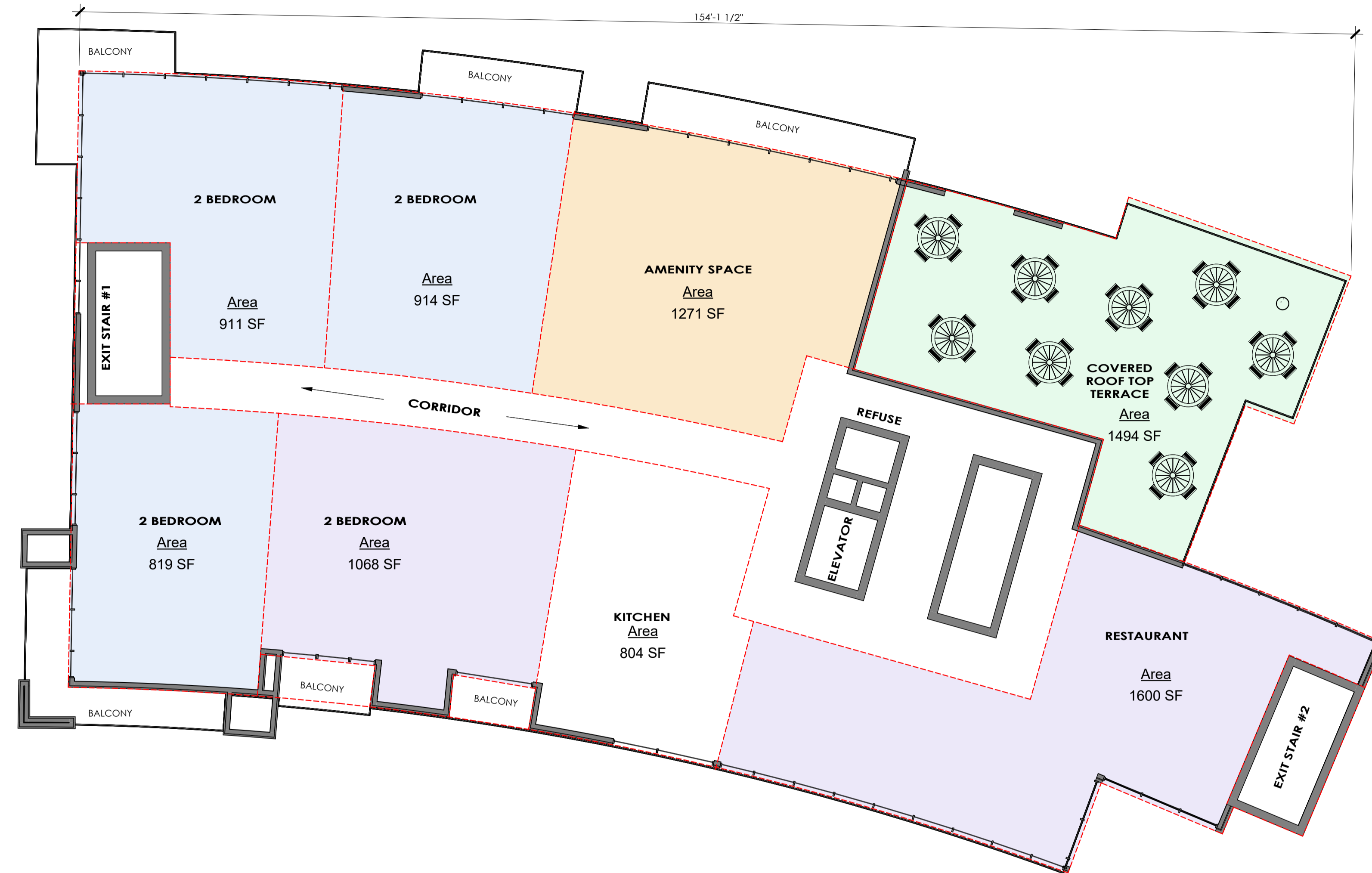
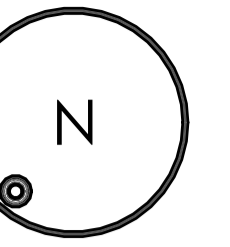
700 PARIS STREET, SUDBURY, ONTARIO

A · C · K
 architects
 STUDIO INC.

14TH - 19TH FLOOR
 PLATE

DWG. No.
A2.5

SCALE: AS SHOWN
 DATE: FEB 10 2023
 PROJECT No.: 2021-144



20TH FLOOR

1" = 10'-0"

9,480 S.F

UNIT STATS
 1 BED - 0 UNITS
 2 BED - 4 UNITS
 3 BED - 0 UNITS
 TOTAL - 4 UNITS

* DISCLAIMER: ISSUED FOR PRELIMINARY DESIGN DISCUSSION ONLY

BUILDING B - CONDO TOWER

700 PARIS STREET, SUDBURY, ONTARIO

A · C · K
 architects
 STUDIO INC.

20TH FLOOR PLATE

DWG. No.

A2.6

SCALE: AS SHOWN
 DATE: FEB 10 2023
 PROJECT No.: 2021-144