



Communities
in Bloom

Collectivités
en fleurs

CANADA

Growing Great Places Together
Cultivons ensemble de beaux espaces



The City of Greater Sudbury
in bloom

Land Acknowledgement

The City of Greater Sudbury acknowledges that we are situated on the traditional territory of the Anishnaabe of the 1850 Robinson Huron Treaty, shared by the Atikamesksheng Anishnawbek, Wahnapiatae First Nation, and Sagamok Anishnabek.

We understand our role and responsibility to honour and respect the inherent and Treaty Rights of all Indigenous Peoples across this land. We are committed to integrating the principles of reconciliation into our community initiatives, including our efforts in sustainable landscaping, environmental stewardship, and civic beautification.

We recognize the profound contributions of Indigenous Peoples to the cultural fabric and environmental sustainability of this land. By embracing our shared history and fostering partnerships with Indigenous communities, we aim to create inclusive and vibrant spaces that celebrate diversity and heritage.

Together with our residents, businesses, and community partners, we strive to build a city that embodies reconciliation, respects Indigenous knowledge, and values the past, present, and future contributions of all peoples to our community's growth and prosperity.



Table of Contents

Welcome to the City of Greater Sudbury	3	Celebrating our Regreening Success Story ..	40
Message from the Mayor	5	Urban Forestry	42
Community Appearance.....	6	50 Million Tree Program	45
Greater Sudbury vs Southern Ontario Cities	10	Environmental Action	46
Bridge of Nations	11	Highlights	47
Heritage Conservation.....	12	Lake Water Quality Program.....	49
Cultural Assets.....	13	Greening the City's Fleet.....	51
Community Murals	15	Waste Collection and Diversion Programs ...	52
Community Events	16	Material Processing Spotlights.....	54
Heritage Assets/Sites.....	17	Litter Clean Up Programs	55
Museums.....	19	Environmental Services	
Natural Heritage Assets.....	20	Public Consultations.....	56
Monuments	22	Waste Diversion.....	57
Cemeteries.....	23	Success in 2023 by the Numbers	57
Landscape	24	Food Strategy	58
Junction Creek Stewardship Committee	26	Active Transportation	59
Rainbow Routes Association (RRA)	29	Business and Institutions.....	63
Ugliest Schoolyard Contest	31	Community Involvement	
Outdoor Rink Shovel Superheroes	32	Public Participation.....	66
Municipal Bylaws.....	33	Community Action Networks (CANs).....	67
Plant and Floral Displays	34	Neighbourhood Associations (NAs)	67
Tree Management Urban Forestry	38	Communities in Bloom Photo Contest	68
Commemorative Trees – Sudbury Regional Tree Fund	39	Community Improvement Plans	69



Floral bed display and amphitheatre at Bell Park



Welcome to the City of Greater Sudbury

Greater Sudbury, located in Northern Ontario, offers a blend of natural beauty, vibrant culture, and rich history. As the region's largest city, it continues to grow, boasting a diverse population of 179,965 residents and a thriving community spirit. Surrounded by picturesque landscapes, there are over 300 freshwater lakes within its borders, including the two largest city contained lakes in the world. Greater Sudbury has a thriving urban centre and visitors are discovering that it is a special place to relax and enjoy major attractions, cultural celebrations, and the great outdoors.

The city's cultural scene presents an impressive array of festivals, galleries, museums, and theatres that celebrate our rich history and cultural diversity. Annual events including Up Here Festival and Northern Lights Festival Boréal showcase our vibrant arts community, while Science North, a premier tourist attraction, delights visitors of all ages with its interactive and hands-on exhibits. Greater Sudbury boasts some incredible and diverse restaurants to satisfy every taste, making it a go-to spot for shopping and dining in the region.

With its 140-year history and expertise in mining, Greater Sudbury has become a global mining hub, recognized internationally, for sustainable practices including our impressive efforts in greening. The Big Nickel is a giant replica of a Canadian nickel and is an iconic landmark and symbol of our city's industrial legacy.

With its unique blend of urban amenities and natural wonders, Greater Sudbury is truly a wonderful place to live, work, and play.



Ramsey Lake



Message from the Mayor

On behalf of the City of Greater Sudbury, I am pleased to present our city's 2024 profile book as part of the Communities in Bloom competition.

This annual competition not only celebrates the beauty of our surroundings, but it also highlights our collective commitment to community pride, civic engagement and environmental stewardship. Our book showcases the incredible work of volunteers, local businesses, municipal staff and residents to create the beautiful and vibrant neighbourhoods we call home.

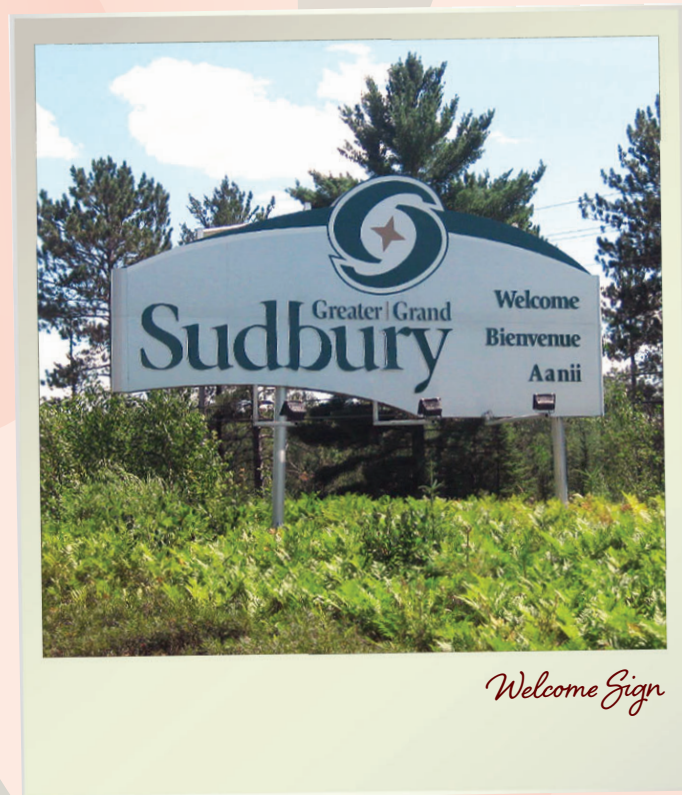
Whether it's our meticulously maintained parks, stunning floral displays, sustainability initiatives, or innovative urban centre, each element reflects our shared vision for a greener, more connected community. I want to extend a heartfelt thanks to everyone for their ongoing support and participation. Together, we are making a meaningful difference and setting a shining example of the kind of community we are proud to share with visitors.

I encourage everyone to keep up this momentum and continue to nurture our shared spaces and natural environment with passion and dedication. I look forward to sharing our achievements together.



Mayor Paul Lefebvre

Community Appearance





Bell Park

With more than 330 lakes, Greater Sudbury is proudly known as the City of Lakes. Our lakes are a year-round source of recreation and are home to a number of public beaches. Bell Park is one of our largest and most renowned parks in the City. Centrally located, it boasts a beautiful boardwalk spanning two kilometres on the edge of Ramsey Lake and a community amphitheatre. In summer, the park is filled with concerts, cultural events and festivals for all to enjoy. In winter, you'll find skaters on the ice enjoying the Ramsey Lake skating path, that has mimicked the water's edge of two kilometers for over 25 years.

With nearly 100 full time and seasonal staff, the Parks department maintains 1,400 hectares of parkland annually including 180km of non-motorized trails. Seasonally, Parks Services maintains approximately 200 waste receptacles throughout our parks, playgrounds, trails, and passive parks. All Horticultural Staff have a Certificate or Diploma in Horticulture or equivalent qualification. Over the last 10 years staff have been incorporating shrubs and perennials into the majority of the gardens. Additional training is provided annually for specific equipment, planting best practices and techniques, particularly in the spring when 60+ seasonal employees are hired to support spring/summer operations and maintenance.

Blue Flag Beaches

In May 2024, Bell Park Main Beach and Moonlight Beach were awarded the prestigious Blue Flag Canada certification for the 7th year in a row. Blue Flag is an international award given to beaches and marinas that meet high environmental, safety, accessibility and cleanliness standards.



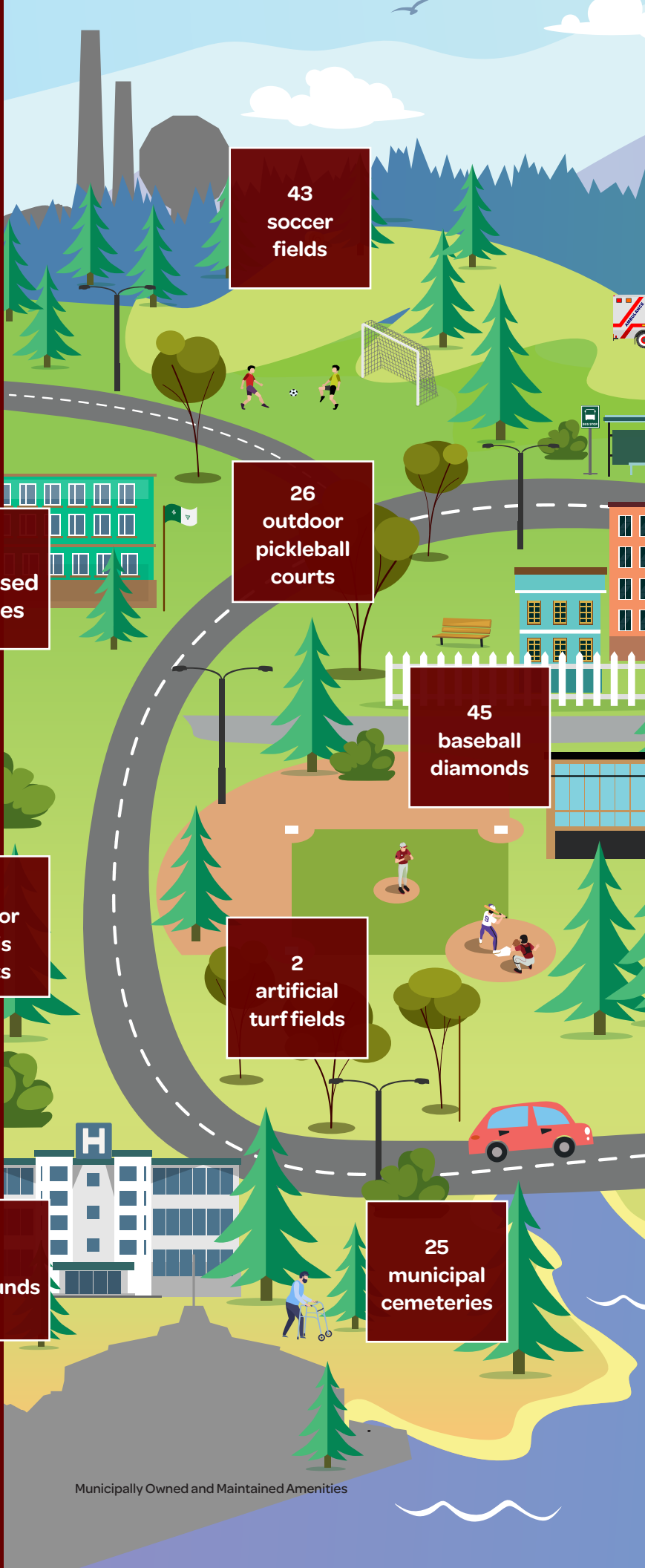
7 supervised beaches



43 outdoor tennis courts



181 playgrounds



2
ski hills

1,400 hectares
of maintained
parkland
including 180km
of non-motorized
trails

179,965
population

57
outdoor
rinks

5 pools

15
ice pads
across 14
municipal
arenas

11
skateboard
parks

3
campgrounds
and trailer
parks

44
basketball
courts

5
fitness
centres

3
dog parks

13
libraries

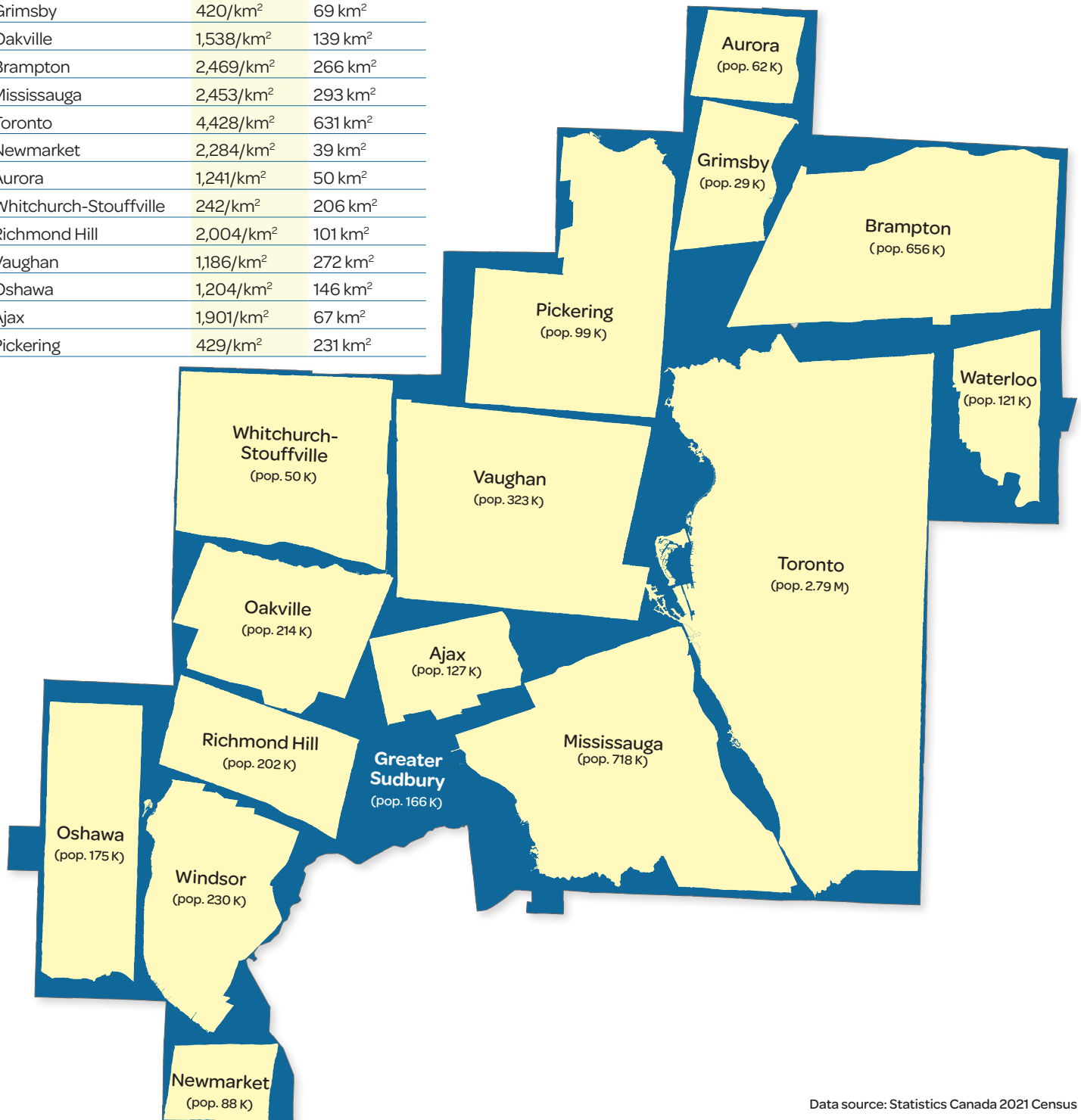
2
skating
paths

17
splash
pads

Greater Sudbury vs Southern Ontario Cities

a look at distance and density

CITY	POP. DEN.	AREA
Greater Sudbury	52/km²	3,186 km²
Windsor	1,573/km ²	146 km ²
Waterloo	1,896/km ²	64 km ²
Grimsby	420/km ²	69 km ²
Oakville	1,538/km ²	139 km ²
Brampton	2,469/km ²	266 km ²
Mississauga	2,453/km ²	293 km ²
Toronto	4,428/km ²	631 km ²
Newmarket	2,284/km ²	39 km ²
Aurora	1,241/km ²	50 km ²
Whitchurch-Stouffville	242/km ²	206 km ²
Richmond Hill	2,004/km ²	101 km ²
Vaughan	1,186/km ²	272 km ²
Oshawa	1,204/km ²	146 km ²
Ajax	1,901/km ²	67 km ²
Pickering	429/km ²	231 km ²



Data source: Statistics Canada 2021 Census



Bridge of Nations

The Bridge of Nations is a local landmark celebrating our city's ethnic diversity and commitment to peace and unity.

On Canada Day, 2007, members of the community gathered as the first flags were raised on the Bridge of Nations, forever changing the landscape of Greater Sudbury.

Today, the flags of 87 countries and nations fly over downtown, representing the cultural mosaic that call our great City home.

Heritage Conservation



Heritage Site – Church of the Epiphany

Photo by Huu Nghia N



Place des Arts

Cultural Assets

Science North – Canada's 2nd largest science centre and Northern Ontario's largest indoor attraction.

Dynamic Earth – Mining and earth science centre, and home of the iconic Big Nickel - celebrating 60 years in 2024.

The YES Refettorio – New open air theatre in downtown Sudbury.

Place des Arts – The first multidisciplinary arts centre of its kind in Northern Ontario, consisting of seven member organizations.

Indie Cinema – Greater Sudbury is one of the smaller communities among the list of cities with independent, not-for-profit, mission-driven arthouse cinemas such as Sudbury Indie Cinema. As a member of NICE (Network of Independent Canadian Exhibitors), we stay connected with colleagues from similar cinemas.



Up Here Festival murals



Community Murals

Over the past decade, We Live Up Here and Up Here Festival have been advocates for beautifying our city with public art and murals. As visitors and residents alike walk through Greater Sudbury's downtown core, they are greeted with sensational masterpieces that capture Northern Ontario experiences and a blend of international flare. The murals were created by local and visiting artists, and are expanding every year, with now nearly 50 works created since 2013.

Up Here also hosts guided walking mural tours and has a self-guided tour app for those looking to learn more about the artists, the works and the public art scene.

Additionally, the Community Action Networks have commissioned murals throughout the community, with some of these vibrant artworks being a collaborative effort that involved members of the community in the painting process.

Community Events

Greater Sudbury hosts a vibrant array of festivals throughout the year, offering something for everyone. Here are some event highlights:

Northern Lights Festival Boréal: This iconic festival, held in Bell Park, features a mix of music genres from folk to rock, celebrating Canadian and international artists over several days each July.

Up Here Festival: Known for transforming the city with art installations and live music, this urban art and music festival brings unique experiences to downtown Sudbury each August.

Cinéfest Sudbury International Film Festival: One of Canada's major film festivals, Cinéfest showcases over 135 films from around the world, attracting filmmakers and film enthusiasts every September.

Blueberry Festival: Celebrating the local blueberry season, this festival includes a variety of activities like pie-eating contests, blueberry-themed dishes, and family-friendly events spread across various locations in July.

Sudbury Jazz Festival: This event features live jazz performances from local, national, and international artists, providing a sophisticated musical experience every September.

These events are just a glimpse of Greater Sudbury's rich festival calendar, which also includes cultural celebrations, sports events, and more.

Other great events include:

Greek Festival, Japan Festival, Queer North Film Festival, Graphic-Con, Philippine Festival, Italian Festival, Gem and Mineral Show, Poutine Festival, Afrofest, Ribfest, Sudbury Multicultural and Folk Arts Association Canada Day festivities, Sudbury Summer Concert Series, Conquer the Crater, Pride Week Events, Onaping Falls Summerfest, Science North's Canada Day event, Indian Food Carnival, Copper Cliff's Famous Strawberry Social, The Great Benjamin Circus/Midway, Annual Downtown Sudbury Yard Sale, Wordstock Literary Festival, Valley East Days and so much more!



Wild Blueberries

Photo by Sindhura Y.

Heritage Assets/Sites

The City of Greater Sudbury takes pride in the conservation of heritage assets and sites, helping to improve and celebrate the history and culture of the city. The City of Greater Sudbury's Heritage Register includes properties that are either designated or listed heritage sites under the Ontario Heritage Act.

Designated Heritage Sites:

- Belanger Homestead
(725 Notre Dame Ave., Azilda)
- Bell Mansion
(468 Ramsey Rd., Sudbury)
- Canadian Pacific Rail Station
(233 Elgin St., Sudbury)
- Church of the Epiphany
(85 Larch St., Sudbury)
- Copper Cliff Fire Hall
(7 Serpentine St., Copper Cliff)
- Flour Mill Museum
(140 St. George St., Sudbury)
- Flour Mill Silos
(Notre Dame Ave., Sudbury)
- Northern Ontario Railroad Museum
and Heritage Centre
(26 Bloor St., Capreol)
- Ste. Anne's Rectory
(14 Beech St., Sudbury)
- St. Louis de Gonzague
(162 Mackenzie St., Sudbury)
– Current home of the Sudbury
Indie Cinema

Listed Heritage Sites:

- Capreol Fire Station
(59 Young St., Capreol)
- David Street Water Treatment Plant
(355 David St., Sudbury)
- Fielding Memorial Chapel of St. Mark
(935 Ramsey Lake Rd., Sudbury)
- Pine Street Elevated Water Tank
(332 Pine St., Sudbury)
- Queen's Athletic Field
(30 Cypress St., Sudbury)
- The Anderson Farm
(550 Municipal Rd. 24, Lively)
- The Carrefour Senateur Rheal Belisle Cultural Centre
(2777 Main St., Blezard Valley)



Heritage sign at St. Louis de Gonzague



Museums

The City of Greater Sudbury Museums was created in 2001 upon the recommendation of the Task Force on Libraries, Culture and Museums. The City of Greater Sudbury Museums is made up of four museums which include:

Anderson Farm Museum

The Anderson Farm Museum is comprised of the century-old heritage buildings of a former dairy farm, once among the largest operating in Northern Ontario during the 1920s-1930s and a log cabin originally from the ghost town of Creighton.

Copper Cliff Museum

The log cabin museum, built in 1890, is located on the site of Copper Cliff's first dwelling. Inside visitors can learn all about the early days of Copper Cliff, the history of mining in the area, and the former town's part in the World Wars.

Flour Mill Museum

This clapboard house, built in 1903 by its owner, François Varieur, shares the history of the Flour Mill neighbourhood and stories of the area's early French-Canadian residents, as well as their role in the development of Greater Sudbury.

Rayside-Balfour Museum

The Rayside-Balfour Museum displays artifacts relating to the development and history of the communities which make up the former Town of Rayside-Balfour. It also highlights some of the people who played a key role in the community.

Northern Ontario Railroad Museum & Heritage Centre (NORMHC)

The NORMHC, located in Capreol, is a rail transport museum. The museum's primary focus is on preserving historical artifacts that represent the heritage of Northern Ontario and the history of the lumber, mining, and railroading industries. This museum offers a unique opportunity for visitors to delve into the rich history and heritage of Northern Ontario and gives you the opportunity to operate a locomotive simulator, explore life on the railroad through the box car house and school on wheels, climb inside a historic locomotive and a caboose, and experience their massive model train layout and interactive programs.

The former Capreol Municipal Building, once home to the Capreol Fire and Police departments, showcases exhibits reflecting on the region's social heritage and the town's early history. The NORMHC is independently owned and operated and receives municipal funding support.

Museum Revitalization Plan

In early 2023, a draft Museums Revitalization Plan was presented to Council, who approved;

- The appointment of a Museums and Heritage Advisory Panel that will provide advice and contribute to the creation of short and long-term plans, formulate the museums' statement of purpose, and recruitment of diverse panel members
- The addition of two full-time permanent staff to address the shortfall of skilled resources required to meet community expectations, industry standards and perceived service levels
- An increase in the operating budget to address increased costs in maintenance and provide financial support for the required external storage for a portion of the artifact collection
- Continued capital budget allocations towards maintenance of heritage buildings and other museum facilities
- Funds for the creation of a standalone website for museums
- Advice on municipal, provincial and federal policies and procedures pertaining to the museums' operations and activities

Natural Heritage Assets

Kivi Park

With over 480 acres of prominent landscape filled with lush Northern Forest, fresh waterways and distinguished rock of the Canadian Shield, Kivi Park is a breathtaking destination waiting to be explored.

Lake Laurentian Conservation Area

Experience 950 hectares of protected green space and the tranquility of a remote wilderness setting.

Onaping Falls A.Y. Jackson Trail

Provides picturesque views and trails leading to the falls.

Windy Lake Provincial Park

Offers trails with lovely lake views and forested paths.



Lake Laurentian Conservation Area



Onaping Falls A.Y. Jackson Trail



Monuments

The Big Nickel

Sudbury's most iconic attraction, the Big Nickel, is located at Dynamic Earth, and is an exact replica of a 1951 Canadian nickel. It was built in 1964 and symbolizes the wealth that Sudbury has contributed to the Canadian economy through nickel production and mining. It is the largest coin in the world, and recently celebrated its 60-year anniversary in July of 2024.



Dynamic Earth and Big Nickel

National Mining Monument

Situated in Bell Park is an impressive monument towering over fifteen feet tall, celebrating the history of mining. This sculpture is a tribute to miners from the first prospectors with their picks and axes up to modern day miners. Hundreds of miners descend on both sides of the sculpture and their collective work merges into two giant hands extracting what lies beneath the Earth's surface.



National Mining Monument

Our Lady of Lourdes Grotto

The statues at Lourdes Grotto were erected in the 1950's. Situated on 5.1 acres, and overlooking scenic views of Lake Ramsey, the Grotto celebrates the world's religions. A full mile of walkways travel through Greek-style columns, a large fountain, flower gardens, benches, statues, and plaques ending at the foot of the magnificent grotto.



Fountain at the Grotto

Stompin' Tom Connors

A bronze sculpture honouring one of Canada's greatest folk/country artists, commissioned by the Stompin' Tom Connors Commemorative Committee, sits in front of the Sudbury Community Arena since 2015. Connors wrote "Sudbury Saturday Night", a song recognized from coast to coast in Canada.



Stompin' Tom Connors Sculpture



St. John's Cemetery

Cemeteries

The City of Greater Sudbury has over 25 cemeteries within the municipal boundary. The City of Greater Sudbury Cemetery Services is responsible for preserving the cemeteries in perpetuity on behalf of the community, and takes pride in sustaining the beauty and dignity of our cemeteries. We recognize the important contributions of individuals and families in the ongoing maintenance of cemetery grounds, and their dedication to adding to the floral and plant life on cemetery grounds.

Landscape



Ramsey Lake
Photo by Richard M.



Parks Donations and Memorial Gifts Program

Citizens can make a donation to select local parks through the Parks Services Donation and Memorial Program to commemorate a special person, or a momentous occasion, or as a philanthropic gesture to beautify our community. The program includes donations of benches, picnic tables, trees and shade structures.



Junction Creek Stewardship Committee

In the bustling urban landscape of Greater Sudbury, the Junction Creek Stewardship Committee (JCSC) plays a key role in environmental stewardship and community engagement. Since its inception in 1999 and its establishment as a Canadian registered charity in 2019, the JCSC has been at the forefront of revitalizing the Junction Creek ecosystem. With a robust vision of a healthy and thriving watershed, the committee actively leads initiatives aimed at enhancing the ecological, economic, and recreational value of this significant natural asset.



Junction Creek Cleanup

Environmental Monitoring and Research to:

- fill data gaps, monitor, and assess stream health, biodiversity, and species at risk
- contribute to scientific databases and community science programs to inform watershed management and conservation
- work with local government, experts, stakeholders, and rightsholders, to influence positive environmental change

Water Quality Monitoring: monthly water sampling, site specific sampling

Bioindicators and Wildlife Surveys: fish community assessments, benthic macroinvertebrate surveys, brook trout, frogs, bats, birds, turtle studies, etc.

Habitat surveys: wetland evaluations (OWES), brook trout, sedimentation monitoring project, etc.

Environmental Restoration and Stewardship to:

- collaborate with local experts and community partners to restore degraded habitat
- mitigate pollutants from entering local waterways, and strengthen natural infrastructure,
- improve biodiversity, building resiliency to climate change, enhancing local green spaces, and improving the health of the watershed and community

Litter and Waste Management Initiatives:

Campaigns and programs to reduce litter, promote recycling, and manage waste effectively within the community.

- Litter monitoring surveys
- Creek cleanups
- Stormwater project



Junction Creek Erosion Control

Habitat Restoration Projects

Implementation of projects aimed at restoring and enhancing habitats along Junction Creek to support native species and improve ecological balance. Projects include planting native trees, shrubs, and wildflowers, bioengineering techniques for shoreline erosion control, invasive species removal, annual trout release and arboretum.

Community Engagement and Education

Engage the community in environmental activities to promote sustainable practices and support environmental stewardship in Greater Sudbury.

Educational Programs: Offer educational programs and resources for schools, community groups, and the general public on topics such as water stewardship, wildlife protection, and sustainable practices.

- Nature Discovery Backpack Lending Program
- Junction Creek Youth Council
- Empowering Youth for Junction Creek
- Yellow Fish Road

Public Outreach: Host community events, provide outreach booths, and disseminate educational materials to engage residents in stewardship activities and raise awareness about environmental issues.

Volunteer Programs: Organize volunteer opportunities for local residents to participate in restoration efforts, fostering a sense of community ownership and responsibility. Provide guided walks and tours along the Junction Creek Waterway Park trail network to explore, discover, and connect with nature.



Rainbow Routes English Conversations on the Trails

Rainbow Routes Association (RRA)

Rainbow Routes was established in 1998 and is a non-profit organization committed to the promotion of all non-motorized trails in Greater Sudbury, fostering both physical health and mental well-being in the community through its regular programming. As a proud connector of the Trans Canada Trail, RRA supports the City of Greater Sudbury in maintaining the trails, including those managed by Conservation Sudbury, through the use of dedicated volunteers.

The RRA is dedicated to inspiring individuals to embrace the outdoors through a variety of engaging programs. Held on the first Saturday of each month, the Monthly Hike Club invites participants to explore the scenic paths of the Greater Sudbury network. English Conversations on the Trails is a program in collaboration with the Greater Sudbury Public Library—a welcoming program designed for those looking to improve their English skills in a relaxed, natural setting. The Nature Walk program, in partnership with the Coalition for a Liveable Sudbury, invites the community to discover the rich history and diverse ecosystems of the trails. The Inclusive Trail Trekkers program, developed with L'Arche Sudbury, ensures that everyone in the community can access and enjoy the Sudbury trails.

The Sudbury Camino, RRA's biggest event of the year, is an annual challenge that encourages the community to spend a day immersed in nature with a choice of venturing a 28 km, 21 km, 15 km, and 4 km guided hike through the Greater Sudbury's section of the Trans Canada Trail.

These programs reflect the RRA's commitment to helping Sudbury's diverse community reconnect with nature and find a rejuvenating break from everyday life. The RRA invites everyone to experience the joy and serenity of the outdoors, providing educational opportunities along the way.



Ugliest Schoolyard Contest winners - Chelmsford Valley District Composite School 2022



Ugliest Schoolyard Contest

The Canadian Biodiversity Institute and Earth Day Ottawa initiated the Ugliest Schoolyard Contest in 1998 in Ottawa. In May 2005, VETAC (City Council's Advisory Panel on Regreening) launched their own version of the Ugliest Schoolyard Competition. This initiative aimed to support schools across Greater Sudbury in revitalizing their outdoor spaces through regreening projects. Over the years, the program has received generous support from Sudbury Integrated Nickel Operations, a Glencore Company, as well as in-kind and financial contributions from local businesses and organizations. From 2005 to 2022, these efforts enabled 49 schools to transform their schoolyards into greener and healthier environments.

Looking forward, the program is progressing with the introduction of a new role: the Regreening Educator, which the City is currently hiring for. This position marks a transition from the contest format to engaging directly with schools. The Regreening Educator will deliver presentations and facilitate hands-on activities in schoolyards. Building on its successful trial run in 2018-2019, this initiative involves tasks such as upkeep of vegetation in former contest-winning areas or establishing new elements such as pollinator gardens or food forests. Beyond the physical transformations, this educational initiative aims to foster connections between children and Sudbury's ecological heritage while highlighting the community's environmental achievements.



Arena employee preparing ice at outdoor rink

Outdoor Rink Shovel Superheroes

Neighbourhood rinks would not be possible without the hundreds of volunteers who donate their time and energy each winter season. Volunteers help maintain and operate 57 outdoor rinks across the city.

Municipal Bylaws

Municipal bylaws are essential regulatory measures designed to uphold community appearance, standards, and environmental responsibility. These bylaws serve a dual purpose: first, to enhance the aesthetic appeal and overall cleanliness of neighbourhoods by establishing guidelines for property upkeep, signage, and public spaces; second, to promote environmental sustainability through measures such as anti-idling regulations aimed at reducing air pollution and conserving natural resources. By setting clear standards for landscape maintenance, waste management, and behaviours such as vehicle idling, municipal bylaws not only preserve the visual charm of communities, but also foster a healthier, more sustainable living environment for residents. This multifaceted approach allows us to effectively manage regulations in place, while safeguarding both the quality of life of residents and environment that define our community.

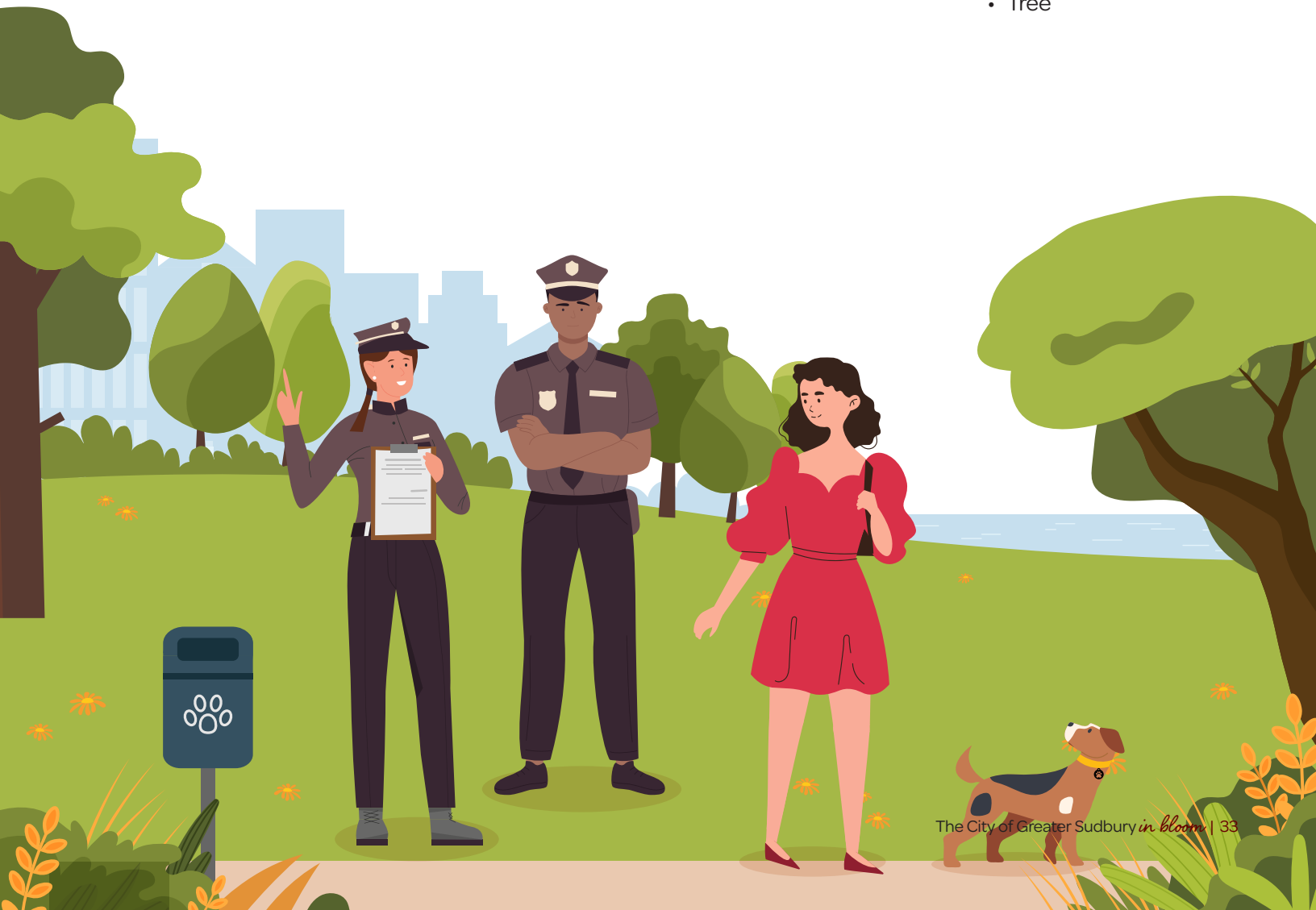
These regulations not only enhance the city's visual appeal but also contribute to a healthier community. They include the following:

Standards:

- Community appearance (effective bylaws, policies and compliance and enforcement)
- Vandalism clean up requirements

Bylaws:

- Property Standards
- Clearing of Yards
- Collection, Removal and Disposal of Waste
- Fouling of Roads
- Parks
- Sign
- Stoop and Scoop
- Zoning
- Anti-idling
- Tree



Plant and Floral Displays



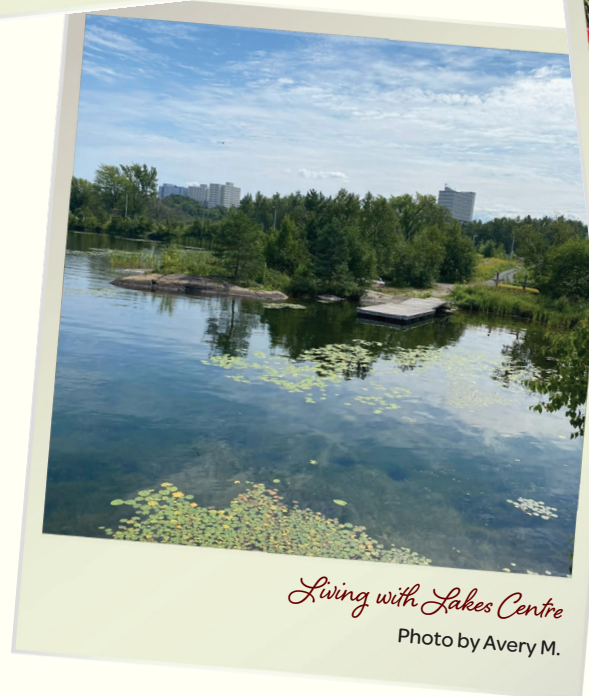
*Communities in Bloom floral design,
Balsam Street entrance, Copper Cliff*



Jim Gordon Boardwalk, Bell Park



Photo by Ted D.



Living with Lakes Centre

Photo by Avery M.

Over 90,000 plants and flowers are planted each year to beautify our city in over 700 flower gardens scattered throughout the city limits, consisting of a variety of planters, hanging baskets and gardens.

- Seasonal displays
- Residential
- Business/Institutional



Photo by Kishwor S.



Photo by Vanessa R.



Photo by Linda C.

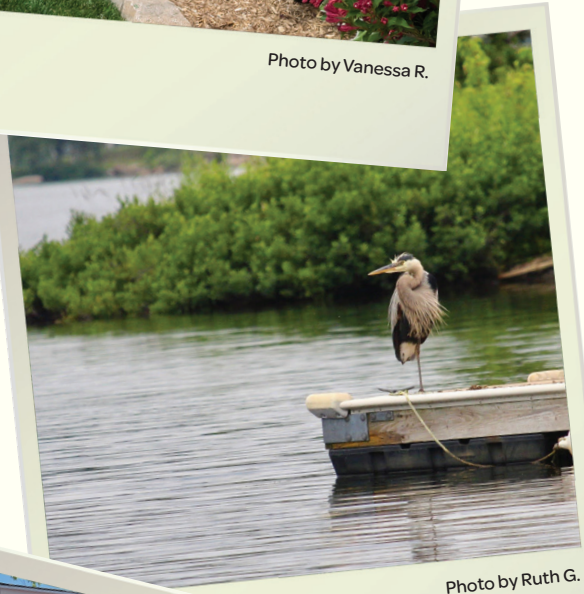


Photo by Ruth G.



Notre Dame Avenue flower beds



Photo by Doris R.



Photo by Kay and John K.



Photo by Asaduzzaman

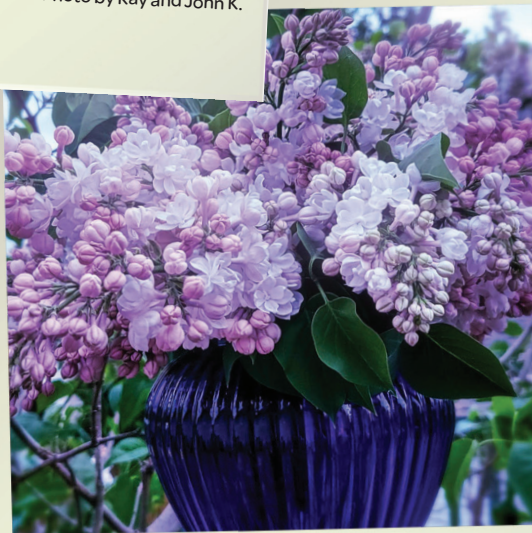


Photo by Jessica B.



Laurentian University Climate Science Parkette
Photo by Avery M.

Climate Science
Parkette
Mini-parc sur les
Sciences du Climat
Shki Kendaaswin Ezhilwebak
Endizhi Nwebing



Birch canopy at Fielding Memorial Park
Photo by Chris B.

Tree Management | Urban Forestry



Lake Laurentian Conservation Area boardwalk

Photo by Huu Nghia N.



Regreening program summer planting

Commemorative Trees - Sudbury Regional Tree Fund

Residents can have a commemorative tree planted in memory of a loved one or as an expression of thanks through the 'A Gift that Grows' program, lead by the Sudbury Regional Tree Fund. This program allows individuals to proudly take ownership of Greater Sudbury's improving natural environment.

Commemorative trees are planted in the Tom Davies Commemorative Forest, located within the scenic Lake Laurentian Conservation Area, only ten minutes from downtown Sudbury. Owned and operated by the Nickel District Conservation Authority, this Conservation Area encompasses 950 hectares (2,400 acres) of protected green space.

This tranquil wilderness setting combines natural and man-made features including: a man-made lake and pond, scenic lookouts, a self-guided nature trail, numerous wetland areas, hiking trails, bird watching spots, as well as snowshoe and cross-country trails in winter.

The Sudbury Regional Tree Fund contributes to the planting of approximately 1,000 native trees annually, such as white pine, red pine, jack pine, white cedar, and tamarack. These seedlings, planted each spring by the City's VETAC Regreening Program, collectively enhance the once-industrially damaged ecosystem of Greater Sudbury.

With every donation to the Sudbury Community Foundation's Sudbury Regional Tree Fund, a tree is planted in the Tom Davies Commemorative Forest. Contributions are pooled with others and invested to generate interest income. This income is then distributed as a grant to support the City of Greater Sudbury's Regreening Program, ensuring sustainable growth and continued improvement of local ecosystems.

Celebrating our Regreening Success Story

2023 marked the 50th anniversary of VETAC and 45 years since the Regreening Program began. Since 1978, more than 3,500 hectares of land have been limed and grassed and more than 10 million trees have been planted with positive results in the rehabilitation of Greater Sudbury's landscape and watersheds.

Our city was once barren and treeless as the result of mining and smelting practices. Today it is a thriving greenspace thanks to the efforts of the Regreening program. The Regreening Program works in partnership with local mining companies and residents. It also offers online videos and other resources to local schools about the Sudbury story.

In 2022, the 10 millionth tree was planted by Dr. Jane Goodall and the Right Honourable Justin Trudeau. During which time, scenes were filmed as part of Jane Goodall's Reasons for Hope IMAX film that was released in 2023. The film showcases three different conservation stories, one being our regreening story, that illustrate Jane's pillars of hope.

Regreening Program Results

Regreening Component	2023	To Date (since 1978)
Tree Seedlings Planted	113,075	10,222,422
Shrubs and Understory Tree Seedlings Planted	27,880	565,166
Area Limed	7.0 ha	3,504 ha
Area Fertilized	5.0 ha	3,271 ha
Area Seeded	5.0 ha	3,199 ha
Forest Floor Transplants	0.051 ha	2.24 ha
Program Cost	\$1,038,182	\$37,443,513
Temporary Employment Opportunities	27	4,895
Awards	---	15
Number of Schoolyards Regreened	--	50
Volunteer Tree Planters	90	13,311
Trees Planted by Volunteers	1,465*	390,076
Trees Provided for Residential Plantings	400*	432,199

**Values are included in the Tree, Shrubs and Understory Tree Seedlings Planted. The Regreening Process*



10 million
7/7/2022

*Celebrating the community's
continued commitment
towards the ecological
recovery of
Greater Sudbury since 1978*

*Célébrant l'engagement
continu de la
communauté envers le
rétablissement écologique du
Grand Sudbury depuis 1978*

"Saving the world together - one tree at a time."

- Dr. Jane Goodall

Sauvons le monde ensemble: un arbre à la fois.

- Dr. Jane Goodall

VETAC

 Sudbury

10 millionth tree monument, Bell Park

Urban Forestry

The City of Greater Sudbury places an emphasis on tree management and urban forestry through comprehensive policies and initiatives. Overseen by the Tree Warden and Superintendent of Horticulture, the city has established bylaws and regulations to protect its urban trees. These regulations encompass landscaping standards, approved planting lists, and guidelines for tree care and maintenance.

Central to Greater Sudbury's commitment is the Street Tree Policy. There are numerous benefits of urban trees including: improving air quality, managing stormwater, reducing heating and cooling costs, and enhancing neighborhood aesthetics. The Tree Warden oversees tree planting within city rights-of-way, implementing a comprehensive tree planting plan that includes species selection, nursery preparation, and post-planting monitoring. Annual maintenance of city-owned trees includes seasonal fertilization and watering, alongside inspections of trees in parks and playgrounds.

Currently, the city is developing an Urban Forest Master Plan, set to be presented to City Council in fall 2024. This plan includes strategies for replacing 1,200 Ash trees lost to Emerald Ash Borer infestation.

These efforts underscore the importance of trees in enhancing livability, sustainability, and resilience in urban environments.





Regreening program tree seedlings



10 millionth tree planting ceremony with Prime Minister of Canada the Right Honourable Justin Trudeau and Dr. Jane Goodall



50 Million Tree Program

Since 2016, Conservation Sudbury has been a Planting Delivery Agency (PDA) through Forest Ontario's 50 Million Tree Program. In collaboration with VETAC, Collège Boreal and local professional foresters, the program is offered to landowners living in the watersheds of the Vermilion, Wanapitei or Whitefish rivers, as well as areas west of, and including, Alban, Noelville, St. Charles and Markstay/Warren. To date, 338,000 trees have been successfully planted in Greater Sudbury and surrounding areas through this program, with an annual target of planting 50,000 trees each spring.

As a Planting Delivery Agency (PDA), Conservation Sudbury works directly with landowners to assess site eligibility, develop planting plans, allocate funding, and coordinate the planting process. The program is designed to significantly reduce the landowner costs that would normally be required to complete large-scale tree plantings and thereby increase the number of trees planted.

Environmental Action



Material Recycling Facility Tour

The City's Official Plan recognizes that a healthy and prosperous future depends on Greater Sudbury being a sustainable community. To that end, the Official Plan adopts a watershed-based approach to planning and provides land use policies that protect significant natural areas and features. The Official Plan also recognizes and includes policies that support climate change mitigation and adaptation.

In 2019, the City declared a climate emergency with a target of becoming a net-zero carbon emissions community by 2050. In response to the climate emergency declaration, a Community Energy and Emissions Plan (CEEP) was prepared and released in 2021, followed by a Community Climate Change Adaptation Plan (CCCAP) in 2023.

In 2009, the City of Greater Sudbury was one of the first Canadian municipalities to release a Biodiversity Action Plan as a natural next step to continue its award-winning greening work begun in 1973.

We are proud of our efforts to make our community greener, cleaner, healthier and more sustainable. With award-winning programs, such as the Regreening Program and EarthCare Sudbury, we strive to make a positive impact in our own activities while encouraging residents to respect, protect and enhance our natural environment.

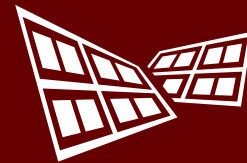
The City of Greater Sudbury prepared its first Climate Action Annual Report for achievements made in 2021 - 2022. Highlights include:

- switched all 11,000 + streetlights to LED bulbs, resulting in a 40% reduction in electricity use;
- upgraded several outdoor sports courts, including lighting, as part of the Outdoor Court Revitalization project;
- continued asset renewal projects including elevator modernizations and extensive roof replacements across a variety of locations; and,
- replaced several boilers in the Greater Sudbury Housing Corporation buildings.

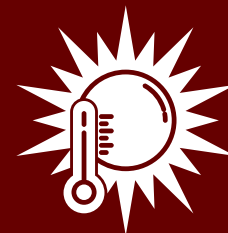
Highlights



A "Greener Events" web page to help event planners find ways to reduce the ecological footprint of their events



Two large solar panel roofs: Gerry McCrory Countryside Sports Complex Arena and Pioneer Manor



Emergency plans for climate change events such as the Hot Weather Response Plan



A landfill gas collection system at the Sudbury Landfill and Waste Diversion Site that converts gases to electricity



Regreening program tree planting

EarthCare

The EarthCare Sudbury Program was established in 2001, and is a unique partnership between residents, the City of Greater Sudbury, and over 150 community, agencies, organizations and businesses. Guided by the Local Action Plan and the climate action plans, the program provides education, outreach and incentives to help the community take action to protect our environment, while improving our quality of life and building a strong local economy. The Plan offers objectives and actions under 10 themes:

- Air quality
- Energy
- Food
- Green Buildings
- Land Use Planning
- Natural Environment
- Solid Waste
- Transportation
- Water/Wastewater
- Youth and the Environment

Lake Water Quality Program

The Lake Water Quality Program was formed in 2001 with a mandate to:

- monitor various water and shoreline quality parameters of local lakes and work collaboratively with other City divisions, government agencies, lake stewardship groups, and individual residents to address problems as they arise;
- promote the creation of stewardship groups on individual lakes.

The Program helps nurture and works with 28 local lake stewardship groups whose aims are to:

- Advocate for local lakes and raise awareness of lake issues in the community;
- Develop a communications network for lake issues;
- Launch fund-raising events;
- Gather information, educational materials and collect data on a range of lake concerns;
- Gain a historical perspective from long-time residents;
- Network with other lake organizations.

Each year, the City provides \$500 grants for up to 10 local groups through a competitive application process.

The Lake Water Quality Program also conducts aquatic vegetation surveys and mapping, water quality sampling and shoreline home visits to local lake-side residents.



Water Conservation

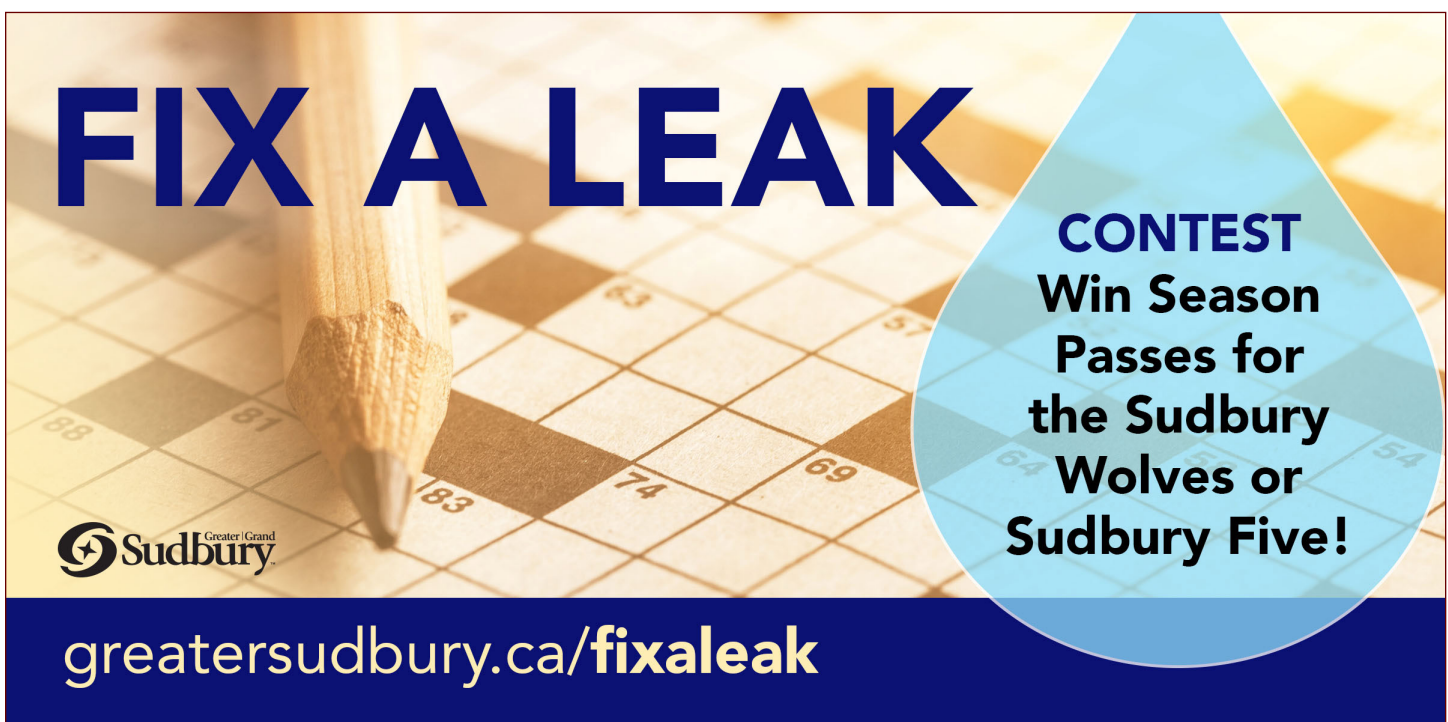
The Greater Sudbury Source Water Protection Plan was developed to protect our current and future sources of municipal drinking water. It identifies potential risks to our drinking water supply and contains policies to ensure that our drinking water remains safe. Policies within this plan are enforced by the City through its Legislative Compliance Support Section.

Every year, the City of Greater Sudbury participates in Fix a Leak Week (FALW), a campaign sponsored by the U.S. Environmental Protection Agency's WaterSense program, to raise awareness of the billions of gallons of water leaked annually nationwide. The campaign takes place during the third week of March and encourages municipalities to hunt down leaks and search for solutions to water loss.

The processing and distribution of municipal water is the most energy-intensive of any municipal operation. This means that any loss of treated water due to leaks also equates to a loss of energy. To remain in alignment with CEEP's commitment to achieve net-zero emissions by 2050, it is important to minimize water loss from leaks and encourage water conservation.


FALW helps develop positive habits that reduce water wastage and encourage the conservation and protection of Earth's most precious resources.

The City's 2023 FALW campaign comprised of a social media campaign, community posters, radio and billboard advertisements, all promoting water conservation and leak detection. Residents were encouraged to complete a water conservation crossword and submit their entry for a chance to win a grand prize. To complete the crossword, residents had to follow the City's social media posts and use the City's water/wastewater web content to find answers. This campaign was very successful with nearly 100 crossword submissions.

A promotional poster for the 'Fix a Leak' contest. The background is a close-up of a crossword puzzle with a wooden pencil resting on it. The text 'FIX A LEAK' is prominently displayed in large, bold, blue capital letters. In the bottom left corner is the Greater Sudbury logo. In the bottom right corner, a blue teardrop-shaped graphic contains the text 'CONTEST Win Season Passes for the Sudbury Wolves or Sudbury Five!'. At the very bottom, a dark blue banner features the website 'greatersudbury.ca/fixaleak' in white text.

FIX A LEAK

CONTEST
Win Season
Passes for
the Sudbury
Wolves or
Sudbury Five!

 **greatersudbury.ca/fixaleak**



Greater Sudbury EV fleet

Greening the City's Fleet

Greening efforts are currently underway to replace end of life cycle light fleet vehicles with electric models.

To date, the Electric Vehicle (EV) fleet is made up of 12 light duty vehicles, two golf carts, one zamboni and nine Level 2 charging stations.

In 2021, Greater Sudbury became one of the first municipalities in Canada to add electric vehicles to its Paramedic Services fleet with the purchase of four EV's.

A feasibility study is also ongoing for the Fleet Electrification Plan.

Greater Sudbury Public Library Environmental Initiatives

Battery Collection program

Residents can stop by any library location across the city to drop off old batteries as part of their battery collection program.

Climate Justice Corner

The Climate Justice Corner (CJC) is a small area in the Main Library that is a 'go-to place' for you to find books, information, resources and items, whether you are looking to shrink your carbon footprint, get involved in community activities and efforts, or broaden your understanding.

Greater Sudbury Seed Library

The Greater Sudbury Seed Library is a free program whose goal is to strengthen our community of gardeners and local eaters by sharing biodiverse, locally adapted seeds.



Waste Collection and Diversion Programs

Residential

The City of Greater Sudbury collects a maximum of two approved garbage bags/bundles/containers of household waste per residential unit every other week. Unlimited amounts of leaf and yard trimmings are also collected from the roadside every other week. Unlimited amounts of Blue Box Recyclables and Green Cart Organics are collected weekly. Residents can request the delivery of a free Green Cart to their residence.

Bulky items such as furniture, appliances and electronics are collected at the roadside for eligible residences. Requests for collection of bulky items can be made through the City of Greater Sudbury's Waste Wise mobile app or online tool greater Sudbury.ca/wastewise.

The City also provides several support programs including rebate programs for Cloth Diapers and Dog Waste Digesters, and garbage limit exemptions for diapers, medical or pet waste.

The municipality manages the Household Hazardous Waste Depot and a Toxic Taxi service to allow residents to properly dispose of their household hazardous waste (HHW). The depot is open 26 Saturdays per year and Toxic Taxi appointments can be made on the Waste Wise app, or by phone for collection at their home.

Battery collection bins are provided at any Greater Sudbury public library, the Environmental Services office at 1805 Frobisher St. and Tom Davies Square at 200 Brady St.

Non-Residential

Recycling and organics collection programs are available for a fee to non-residential units (e.g. hair salon, church, small store, etc.) located on a residential collection route. The Yellow Box Recycling Program provides non-residential units with weekly roadside collection of up to three Yellow Boxes or one Big Yellow recycling container. The Yellow Cart Organics Program provides weekly roadside organics collection of up to three Yellow Carts.



Material Processing Spotlights

The City, in collaboration with Greater Sudbury Utilities, recaptures landfill gases from the Sudbury Landfill to convert them to electricity for the grid, by using approximately 4,700 metres of collection trenches with perforated pipes buried within the waste. In 2023, the volume of landfill gas collected was 4,303,689 m³, generating 7,333,407 KWh of electricity. This is enough to power about 771.93 average households for a year. In addition to reducing the release of greenhouse gases into the atmosphere, this generated an average annual revenue of over \$350,000.

The landfill site operators set aside reusable discarded items to place in the Reuse Stores of different landfill sites. These varied items are not only diverted from the landfill but can be purchased by residents for reasonable rates. Items include: children's toys, lawn furniture, sporting goods, luggage, lawn mowers, bicycles, counter tops, sinks, doors and more. In 2023, items diverted to site ReuseStores diverted 74 tonnes of waste from Greater Sudbury landfills.

Green Cart Organics are mixed with woodchips made from branches/leaf and yard trimmings brought to the landfill. These materials are placed in windrows to be periodically turned and go through an aerobic composting process (in the presence of oxygen). Mixed leaf and yard trimmings are processed in a similar way. The finished compost and woodchips are made available for purchase. The City gives away a total of 1 tonne of finished compost, packaged in small burlap bags to residents during an annual event held in May, in partnership with the Sudbury Horticultural Society and the Greater Sudbury Market.

The City's Material Recycling Facility (MRF) accepts recyclable materials from a variety of sources, including but not limited to: residential, industrial, commercial, and institutional sources, Public Spaces and depots. The City accepts Blue Box materials from within City boundaries, as well as other municipalities and First Nations outside the City's boundaries, with which the City has entered into an agreement for the receipt of Recyclable Materials.





Litter Clean Up Programs

City Crew Roadside Litter Collection and Abatement

Roadside litter collection and abatement is completed seasonally along roadsides of major arterial roadways, secondary roads with heavy traffic flow, and in areas based on service requests received via 311 and identified during proactive field inspections. These activities are conducted both manually and with mobile equipment. From the beginning of May until the end of August, a crew of three summer students are typically hired to complement full-time resources.

Volunteer Litter Abatement Programs

These programs managed by Environmental Services include, One-Time Clean Up Events where residents can register a group to clean up an area once; the Clean Up Blitz, an annual two-hour event where groups register to clean up litter on various designated roadside areas throughout the City on the event day; and Adoption Programs, where groups can adopt a bin, a road or a spot, taking on the responsibility of periodically cleaning up litter in their adopted areas.

Long-term adoption programs promote clean-up initiatives, create litter awareness, and provide advertising opportunities for participants. The Clean up Blitz encourages participants to show community pride and is scheduled to take place at the approximate time of the year when the snow melt has left behind litter that has been trapped in the snowbanks throughout the winter. This program is very popular and attracts many volunteers each year.

Environmental Services Public Consultations

Environmental Services has been working on updating its Solid Waste Master Plan, with an external consultant. The overarching goal of the Solid Waste Master Plan update is to develop a sustainable waste management system that minimizes the quantity of waste requiring handling and disposal, and maximizes waste diversion opportunities. It will provide the basis for policy development, guide future decision making and provide direction on how to achieve Solid Waste goals over the next 10 years.



Waste Diversion

Success in 2023 by the Numbers



25

special events or festivals requests recycling/organics collection with an approximate attendance of 29,850



104

presentations, events attended, tours, Education Centre visits, etc.



7,588

new active reminder alerts were set for collection days



721,589

waste collection schedules viewed



4,450

addresses searched



640,815

materials searched



6,970

new Waste Wise app subscribers in 2023



45,639

Waste Wise app subscribers since 2016



2,816

inspections/home visits took place



54

schools and board offices have been approved on the organics program



61 tonnes

of household hazardous waste were disposed, 168 tonnes were recycled, and 96 tonnes were reused



18,000 + tonnes

received at the City's Material Recycling Facility to be processed and diverted from Greater Sudbury landfills



49

groups participated in the Clean Up Blitz



48

adoption and One Time Clean Ups



Azilda Community Garden – Photo by Tanya M.

Food Strategy

Food Forests

Delki Dozzi Park is home to Greater Sudbury's first and largest food forest, spanning about 8,000 square feet. The forest was established in two phases from 2017 to 2018, led by the Sudbury Shared Harvest. Since its inception, more than 300 people have volunteered their time here, with an estimated 400 volunteer person hours dedicated on an annual basis.

Since then, we have seen eight smaller community food forests come to life across the city. Six are located on City property, one is located at a school and the last is at Science North. The City works closely with the groups to maintain the forests.

Each forest mimics a natural forest ecosystem, so no manicuring is done and no fertilizers or pesticides are used to maintain them. Native flower species have also been added to enhance the biodiversity and create pollinator friendly spaces. Some of the species found in the food forests include: cold hardy apples, cherries, haskaps, currants, gooseberries, serviceberries, rhubarb, asparagus, cherry-plums and sea buckthorn.

Flour Mill Community Farm

In the heart of the Flour Mill is a small but mighty community farm that teaches volunteers, students and neighbours how to grow food and about the environment, while also offering a pay-what-you-can market. The farm seeks to help underserved communities and has recently expanded to include a quarter-acre food garden in Wanup.

Community Gardens

Spread across the city, you will find over 30 community gardens led by volunteer groups. Each one is unique in how it is organized and maintained. Some have buy-in plots, while others simply grow food with the goal of donating to local food banks. The Sudbury Community Garden Network works closely with the City of Greater Sudbury, Public Health Sudbury & Districts, the Foodshed Project, Coalition for a Liveable Sudbury, Sudbury Shared Harvest, Greater Sudbury Community Action Networks (CANs), and other local community groups to support the development and operation of community gardens in the region.

Active Transportation

2016 Transportation Master Plan (TMP)

The 2016 Transportation Master Plan (TMP) for Greater Sudbury was updated to align with the City's commitment to sustainability and multimodal transportation, as outlined in the Greater Together (2015) Corporate Strategic Plan and the City's Official Plan (2006). The TMP focuses on optimizing and enhancing the transportation network by incorporating cycling facilities and recommending policies to support pedestrian and cycling infrastructure. This approach aims to connect neighbourhoods, promote healthier and more equitable travel options, and contribute to a more environmentally sustainable community.

The TMP outlined a detailed network of cycling facilities to encourage active transportation, proposing 407 km of cycling infrastructure for implementation in the short, medium, and long-term.

Pedestrian and Cyclist Infrastructure

Since the adoption of the TMP in 2016, the City continues to take steps to improve road safety for pedestrians and cyclists through the construction of new infrastructure. This includes close to 8 km of new sidewalk and 119 km of cycling infrastructure, bringing the total to approximately 350 km of sidewalk network and 140 km of cycling infrastructure. As well, the City continues to take steps to improve the safety of pedestrians and cyclists as part of capital projects. The addition of a paved boulevard between the sidewalk and road which acts as a buffer zone, and the installation of tactile warning strips at sidewalk ends, and 1.0 m painted buffer between parking lane and bike lane are examples of active transportation safety enhancements that have been incorporated into capital projects.





GOVA transit

Transportation Demand Management Plan

The Transportation Demand Management (TDM) Plan for Greater Sudbury, finalized in 2018, was developed to address travel behaviour and promote sustainable transportation options. Initially introduced to the Operations Committee in May 2017, the plan aimed to reduce single-occupant vehicle use and encouraged walking, cycling, transit, and carpooling. The City of Greater Sudbury approved the plan in June 2018, incorporating it as a framework to complement infrastructure investments and foster more sustainable travel behaviours.

TDM Community Grant Program

In 2019, the City initiated the Transportation Demand Management Community Grant Program, aligning with the Council's commitment to optimizing transportation infrastructure investments. The aim of this grant program is to bolster a robust, non-profit sector program, offering eligible organizations funding assistance for community-based activities that positively impact the entire city and contribute to the implementation of the TDM Plan for Greater Sudbury.

Since the program's initiation in June 2019, the City has approved 35 applications and distributed \$35,000 in funding to support various TDM-related programs, initiatives, and services.

Cycling Projects

Paris-Notre Dame Bikeway

- The Paris-Notre Dame Bikeway ('Bikeway') is planned to be a physically separated cycling facility on Paris Street and Notre Dame Avenue that will act as a spine to connect the City's cycling network from Regent Street in the south to Turner Avenue in the north.

Kingsway

- Silver Hills to Falconbridge Road
- Includes cycle tracks on both sides, intersection improvements, and a new sidewalk from Barry Downe to Falconbridge

Walford Road

- Regent to Paris Street
- Includes cycle tracks on both sides of the road

Larch Street

- Elgin and Lisgar Streets
- Two through lanes reduced to one and the introduction of an on-street cycle lane

Ride Share Program: Smart Commute (2023)

- Mobile application promoting sustainable transportation
- Offers eco-friendly alternatives to solo driving

Rack and Roll

- All GOVA Transit buses equipped with bike racks (can accommodate two bicycles)
- Free bike transport on buses
- Aims to reduce carbon footprint and commuting costs

Public Education Programs and Activities

- Cycling-related events such as Bike Month since 2018
- Recognized as a Bicycle Friendly Community (Bronze Level)



Complete Streets Policy

Adopted in June 2018, Greater Sudbury became the 6th municipality in Ontario to officially adopt a Complete Streets Policy. Complete Streets are designed to accommodate all users (pedestrians, cyclists, transit users, drivers). The design varies based on the street's character and context.

Complete Streets Design Guidelines (in progress)

Greater Sudbury is developing consistent guidelines for the design, implementation, maintenance, and monitoring of Complete Streets across the city.

Sidewalk Priority Index

The Sidewalk Priority Index (SPI) is a strategic tool developed to prioritize sidewalk construction and enhancements in a city, focusing on the needs of pedestrians, especially the most vulnerable. It evaluates the road network to identify areas where pedestrian infrastructure is lacking, scoring road segments based on factors such as vehicle volumes, proximity to schools and transit, and pedestrian safety records. By ranking these segments, the SPI helps allocate resources effectively to ensure safe and accessible routes for pedestrians throughout the city. For the past five years, staff have been utilizing the SPI to select standalone sidewalk construction projects and to help rationalize the installation of new sidewalks as part of major rehabilitation or reconstruction projects.

Gateway Speed Limits

Gateway Speed Limits refer to a traffic management approach that allows municipalities to set a uniform lower speed limit for large areas by placing speed limit signs only at the entry and exit points of the designated area. This method simplifies the process of enforcing speed limits by reducing the number of signs needed, as the speed limit applies to all roadways within the designated area once the gateway signs are installed. This approach is designed to improve road safety and reduce costs associated with installing numerous individual speed limit signs on each street. The City initiated a pilot project in 2022 to test this approach in a specific neighbourhood and, based on its success, expanded the project in 2023 to include one location in each ward.



Business and Institutions

The Cambrian College Glencore Centre for Innovation

The Cambrian College Glencore Centre for Innovation houses Cambrian R&D, the Centre for Smart Mining (CSM), and the Cambrian Battery Electric Vehicle (BEV) lab. Cambrian R&D provides solutions that improve services, processes, and products for everything from agriculture and food production to mining. The CSM facilitates new technology adoption in the mining sector. The Centre's focus includes digital technologies, underground communications, alternative tailings treatment technologies, and battery-powered and connected mining vehicles. The BEV lab features equipment for BEV prototyping and testing powertrains and batteries, including battery emulation equipment, duty cycle testing equipment and dynamometers. It is the only public research facility in Canada to focus on mining and heavy-duty electric equipment, and has capacity to test vehicles' electric motors up to 600 kilowatts.



Cambrian College BEV lab

Mining Innovation, Rehabilitation, and Applied Research Corporation (MIRARCO)

MIRARCO's proposed Centre for Mine Waste Biotechnology in Sudbury aims to develop biotechnologies for use in real-world sites, to improve the environmental and economic sustainability of mining and related sectors. This facility will be equipped with tools and expertise to accelerate the commercialization of genomics-based bioremediation and bioleaching technologies. The Centre will provide a development and testing site where large samples of waste materials can be brought for pre-processing and treatment, and will respond to the urgent need for innovative solutions that transform mine waste from environmental hazard, to economic opportunity through economically sustainable mine waste strategies.

HighLight Solar Plant

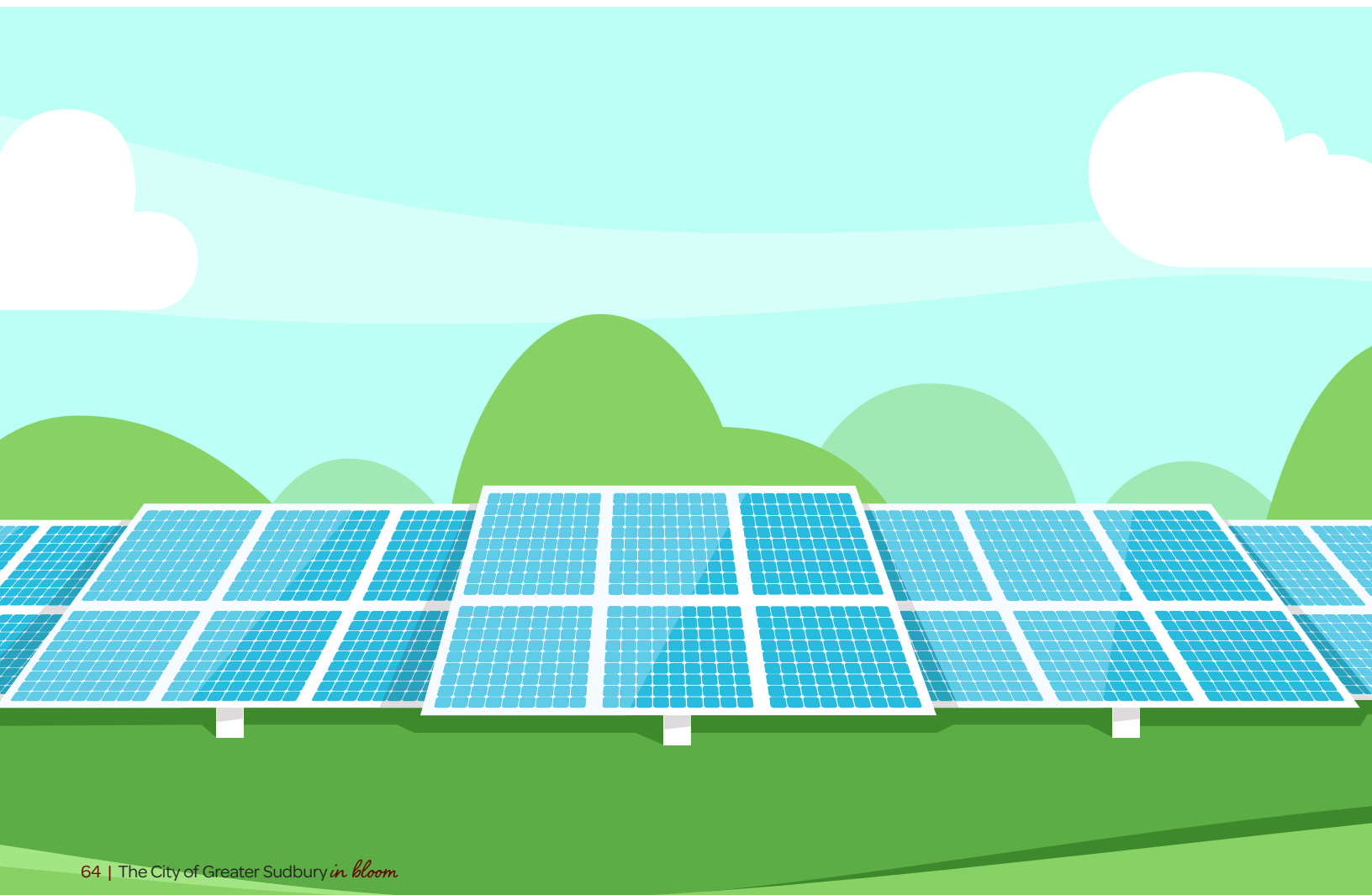
The HighLight Solar Plant (also known as the Capreol Solar Farm), located in Capreol, is a 10 MW solar plant featuring over 50,000 photovoltaic (PV) panels. This solar plant sits on 125 acres and generates between 15,000 to 22,000 MWh of electricity per year, enough to power over 1,500 households. The energy generated at the plant feeds into the grid managed by the Ontario Power Authority. The plant has been in operation since 2014, and plays a crucial role in promoting environmental sustainability, and providing a reliable source of green energy for the province.

The Climate Risk Institute (CRI)

CRI is a non-profit, academically affiliated organization focused on advancing practice and delivering services related to climate change risk assessment, adaptation planning, policy evaluation and resiliency. They run programs, develop and coordinate projects to mobilize knowledge, improve capacity, and deliver results for climate resiliency.

CRI works with all levels of government, partners in Canada and internationally, Indigenous communities, and private sector organizations to support the consideration of climate change in various planning and management processes, including enterprise risk management, hazard identification and risk assessment, corporate planning, infrastructure renewal and official plan development.

The Ontario Centre for Climate Impacts and Adaptation Resources (OCCCIAR) transformed into the Climate Risk Institute in July 2019. The transition included the adoption of all past and current OCCCIAR resources and tools. The OCCCIAR developed and implemented resources and tools that communities, professionals and experts from all fields require in their decision-making processes.





Vale Living with the Lakes Centre

Vale Living with Lakes Centre

The Vale Living with Lakes Centre is a world class environmental research centre, where early career scientists and faculty address environmental issues such as climate change, aquatic biodiversity, habitat loss, and the need for effective restoration techniques. This globally awarded “green” building (LED platinum) is home to the Cooperative Freshwater Ecology Unit, a senate approved research centre established through a partnership with the Ontario government as a unique collaborative model, where students work directly with government, industry and university scientists to address both basic and applied research questions. Their monitoring and research findings contributed to the revisions of the NA Clean Air Act, affected a number of important forest, watershed and fisheries management policies, and climate adaptation planning for local municipalities and northern First Nations communities. The Centre was recognized with the Bronze Award for North America in the global Holcim Awards for Sustainable Construction in 2008.

Lopes Limited

Lopes Limited is committed to giving back and supporting the Greater Sudbury community in meaningful ways. The company has a strong track record of investing in local initiatives, including the Bridge of Nations in the heart of Sudbury, and the Adélie Splash Pad and Community Gardens Greenhouse in Coniston. This greenhouse provides fresh produce that is delivered to three local seniors’ residences every week.

In 2023, Lopes Limited donated a new greenhouse to the Twin Forks Community Garden. The garden is a collaborative effort between the Ward 8 Community Action Network and the Twin Forks Neighbourhood Association. All produce is shared with the community and organizations like the Food Bank. Lopes has also donated a greenhouse to the Sagamok First Nations that will be operational in the coming month.

Community Involvement Public Participation



Clean Up Blitz volunteers 2024

In addition to the programs and events mentioned earlier in the book, the City of Greater Sudbury also has several associations that encourage community involvement.

Community Action Networks (CANs)

For over 15 years, CANs have brought together residents to build healthy communities that are strong and vibrant. They emerge from the collaborative efforts of citizens who care about where they live and want to make their neighbourhoods the best they can possibly be.

CANs receive support from the City through an annual community grant, staff assistance, and other resources. Their efforts focus on impactful projects and initiatives that enhance the overall quality of life in Greater Sudbury. There are currently 20 CANs throughout the Greater Sudbury region, covering all major communities.

The City is undertaking a comprehensive review of the Community Action Network (CAN) program, including CAN's organizational structure, mandate, status, and alignment with the City of Greater Sudbury's strategic priorities. The Review aligns with the 2019-2027 Strategic Plan and will help inform the development of a community engagement strategy.

Neighbourhood Associations (NAs)

NAs are volunteer organizations that work in co-operation with the City of Greater Sudbury to improve the quality of life in their community. Each NA organizes and promotes local leisure opportunities to meet the needs of area residents. They are involved with various programs, activities and special events, including community clean ups, winter carnivals, outdoor rinks and facilities. Many NAs sponsor facility improvements through fundraising initiatives.

In addition to providing and maintaining the NA facilities, the City of Greater Sudbury assists NAs by providing resource staff, assisting with volunteer recruitment, providing an annual grant, developing training opportunities for volunteers and promoting programs and activities.



Communities in Bloom Photo Contest

In anticipation for the Communities in Bloom competition, the City of Greater Sudbury launched a photo contest for residents to submit photos that celebrate Greater Sudbury's green spaces, landscapes, community engagement and neighbourhoods.

Three winners would be chosen to win a prize pack valued at \$500, a celebratory lawn sign, and for their garden or home to be featured on the city-wide tour with the judges in August 2024. We received a total of 42 submissions over the course of two and a half weeks. Photos from the contest were also used throughout this Profile Book. The three winners' photos can be seen here:





Whitson River Trail

Community Improvement Plans

The City of Greater Sudbury uses Community Improvement Plans (CIPs) as a sustainable community planning tool to guide and promote development, and revitalize areas of our city through programs, grants and incentives.

For example, the City has undertaken two CIPs to enhance and strengthen the town centres of Capreol and Chelmsford. The planning process with these communities allowed the City and residents to identify issues and opportunities, and helped provide a clear strategy with defined goals and objectives on how a new vision for each community can be achieved. The recommended improvements provided a comprehensive list of projects that the City can prioritize for action over time. The Capreol waterfront was designed with the community over a two-year process and was built in time for the Town's 100th anniversary. A similar process was undertaken in Chelmsford, resulting in the opening of the Whitson River Trail.



greater Sudbury.ca