



Gatchell Outfall Sewer Project Update CGS Operations Committee

Presented By: Wendi Mannerow, P.Eng.
Water / Wastewater Engineer
City of Greater Sudbury
and: Darren Radey, P.Eng.
Regional Manager
RV Anderson Associates Ltd.



Date: February 29, 2016



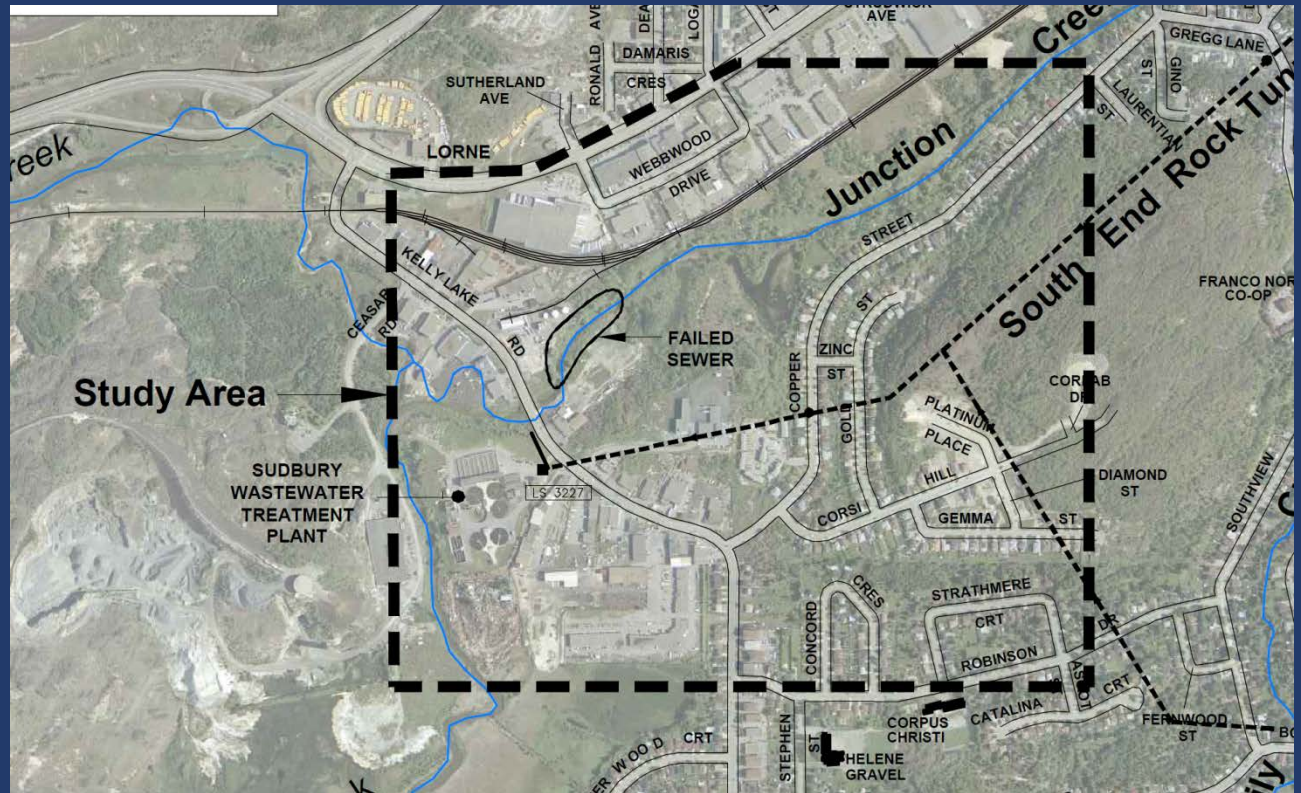
Introduction & Purpose



- Summarize Class EA Study & Recommended Solution
- Provide Next Steps, Schedule & Budget Implications of the Gatchell Outfall Sewer Project
- Request Authorization to Proceed with Next Steps of the Project



Project History



May 2007 – Junction Creek bank slope failure caused section of 600mm trunk sewer to fail; emergency repairs to slope and sewer; 2008 – structural liner



Project History & EA Study



2010 - City retained RV Anderson to complete Schedule B Class EA Study:

“The City of Greater Sudbury shall review alternatives to identify, evaluate and confirm the preferred long-term solution for the replacement of a sanitary sewer main known as the Gatchell Outfall Sewer”



May 2013 Creek Bank Slip





EA Alternatives Evaluation



- Long list of alternatives, screened and short list determined
- Major criteria groups considered:
 - Natural, Social & Economic Environment
- Developed weighted criteria & confirmed approach with City staff “stakeholders” team



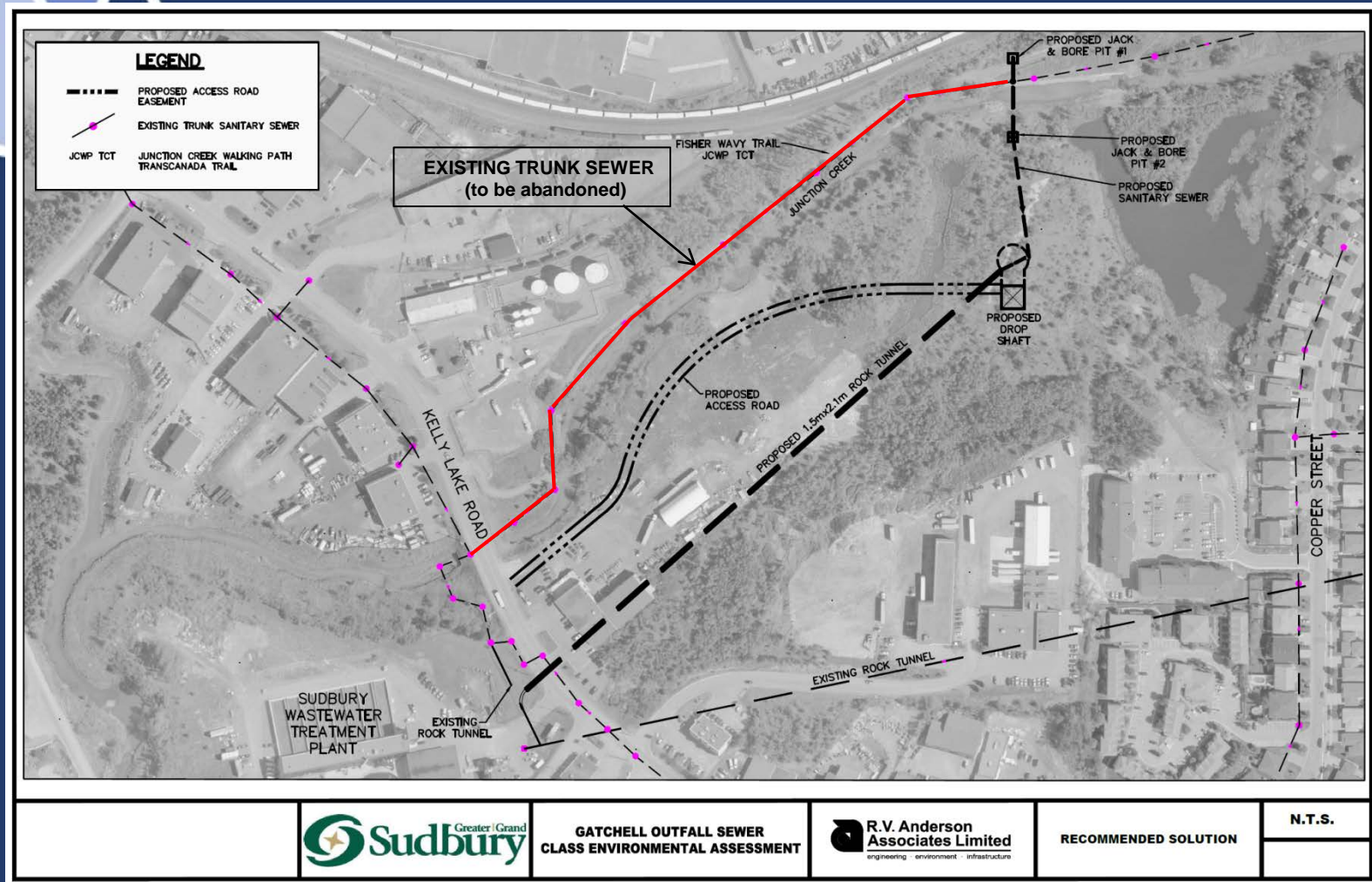
Recommended Solution

New rock tunnel extension to existing Gatchell rock tunnel:

- Pipe removed from high risk area
- Construct drop shaft to accommodate future Rock Tunnel expansion
- Minimal long term operating costs
- Trail will be only maintenance cost

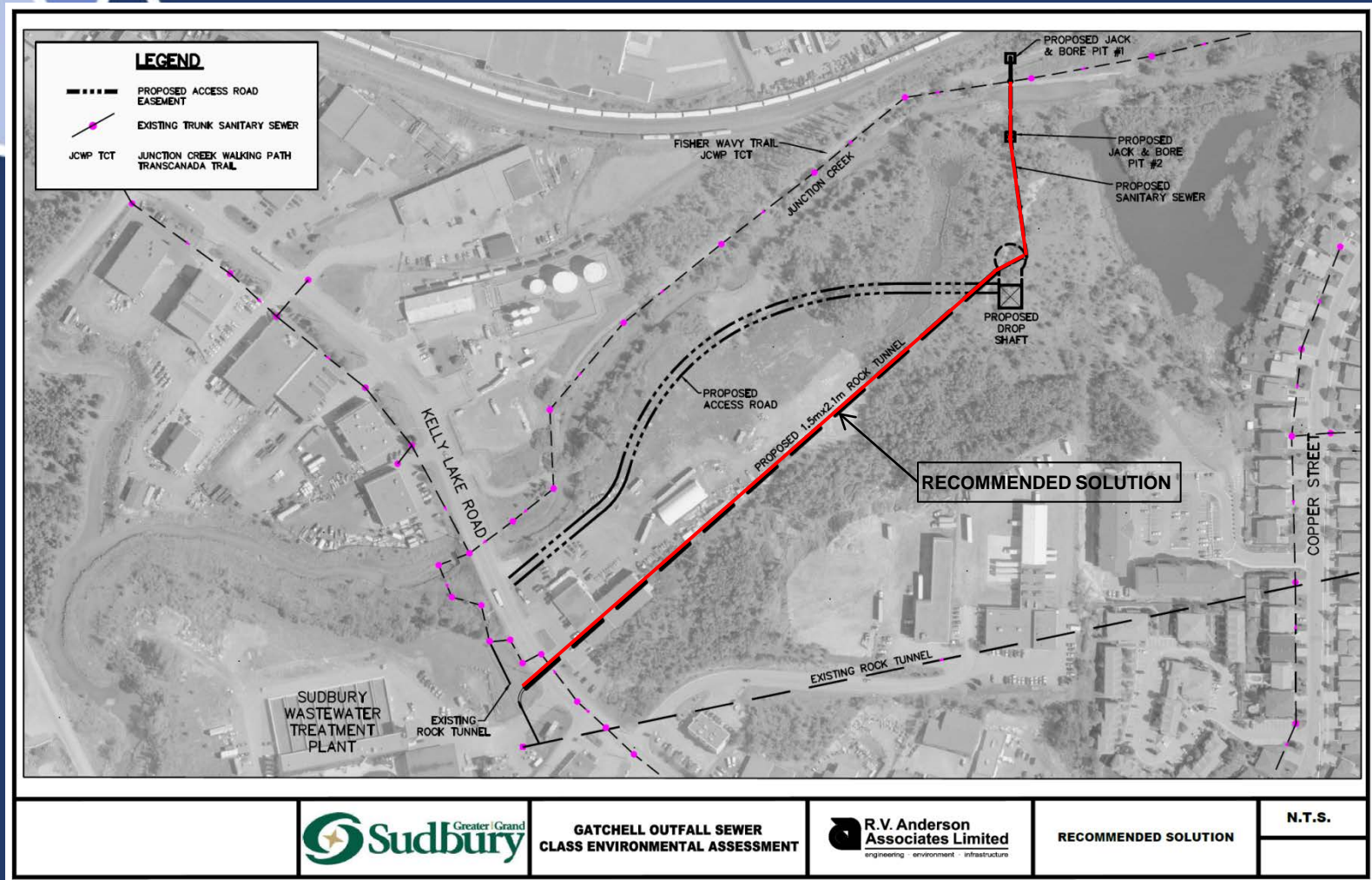


Recommended Solution





Recommended Solution





Stakeholder Comments



Public Consultation Session #1 (June 22, 2010) : 4 attendees

Department of Fisheries &
Oceans

Local property owners

DFO should be notified if recommended solution involves in-creek work

Successfully negotiated easements and property acquisition for project requirements

Public Consultation Session #2 (January 7, 2016) : 9 attendees

Sudbury & District Health Unit

No concerns with recommended solution

Junction Creek Stewardship Committee

Species at Risk, approvals, mitigation measures, construction timing, care around previous remediation area, potential for contaminated soils, repair to trails

Ministry of Natural Resources & Forestry

Requested additional consultation during detailed design

Imperial Oil

Enquired about ongoing monitoring of the creek embankment by CGS, not planned

Ministry of the Environment & Climate Change

No comments to date



Proposed Project Schedule



EA Completion: end of April 2016

Detailed Design: May 2016 – Dec 2017

(via RFP for Engineering Consultant)

Construction: Jan 2018 – Dec 2019



Budget Implications

Estimated Capital Cost = \$8.0M*

Current Accounts = \$1.9M

Future Budget Required = \$6.1 M*

*will be revised as detailed design proceeds



Conclusion

- **Trunk sanitary sewer requires replacement**
- **EA recommendation provides best value to the City:**
 - **Solves the problem**
 - **Provides opportunity for long term growth**
 - **Considers triple bottom line approach**
- **Next steps: EA completion, detailed design, construction**



Questions / Discussion