

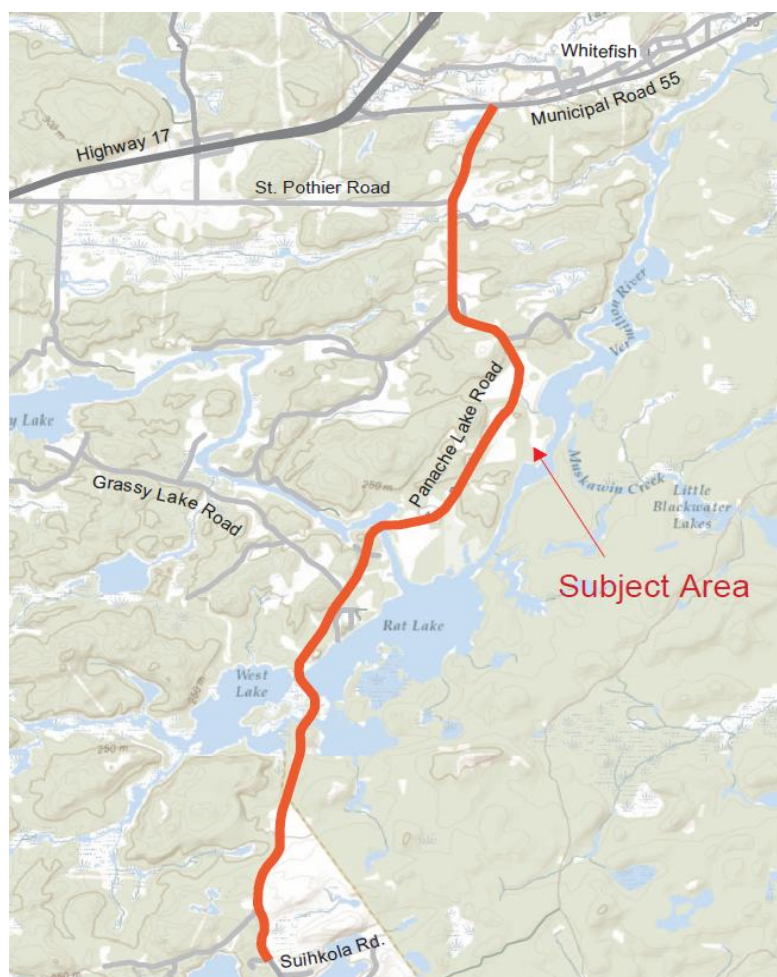
## Maximum Speed Limit – Panache Lake Road

The Transportation and Innovation Services section received a request from area residents to review the existing 80 km/h posted speed limit on Panache Lake Road between Municipal Road 55 (MR 55) and 210 metres north of Suihkola Road.

In 2010, City Council adopted the Canadian Guidelines for Establishing Posted Limits published by the Transportation Association of Canada (TAC) for establishing posted speed limits on arterial and major collector roads. This was adopted to provide an objective and consistent process for establishing speed limits within the City.

Panache Lake Road is collector road, located in Whitefish, which provides a connection for the rural properties in the area to and from Municipal Road 55. It is constructed to a rural standard with asphalt surface width that varies from 6.5 to 7.0 metres and gravel shoulders.

The Average Annual Daily Traffic volume (AADT) along this section is approximately 920 vehicles and the posted speed limit on this section of Panache Lake Road is 80 km/h. South of this section, the posted speed limit is 60 km/h.



To determine the recommended speed limit from the Canadian Guidelines for Establishing Posted Speed Limits, staff divided Panache Lake Road into two segments based on the residential density and existing speed limits. The risk score and recommended posted speed limit for each segment can be found in the table below. The complete evaluations based on the Canadian guidelines can be found in Appendix A and B.

**Table 1 – Summary of Recommended Posted Speed Limits**

<u>Location</u>	<u>Current Posted Speed</u>	<u>Total Risk Score</u>	<u>Recommended Posted Speed</u>
MR 55 to Grassy Lake Road	80 km/h	31	70 km/h
Grassy Lake Road to 210 m north of Suihkola Road	80 km/h	32	70 km/h

Applying the physical characteristics of each segment to the Canadian Guidelines and using a functional classification of a “two lane rural undivided major collector”, yields a total risk score of 31 and 32 for the two segments and results in a recommended speed limited of 70 km/h.

Staff also reviewed collision data for the two segments from 2015 to 2019 year to date and found that there were total of ten reported collisions during this period. Eight of the ten collisions were classified as single motor vehicle collisions. The operating speed of the vehicle is typically a contributing factor for this type of collision.

Considering the function of the roadway and the collision history, staff recommends the maximum posted speed limit be reduced to 70 km/h.

Additionally, there are several horizontal curves along Panache Lake Road that have a measured “comfortable” speed of less than 70 km/h. City staff will be making improvements to the existing curve warning and advisory speed signs to further enhance safety.

#### **Resources Cited:**

City of Greater Sudbury, *Maximum Road Speed Limits*, September 2010, Accessed Online:  
<http://agendasonline.greatersudbury.ca/index.cfm?pg=agenda&action=navigator&id=310&itemid=3480&lang=en>