

2015-2020

Solid Waste Strategy

Presented by:
Chantal Mathieu & Renee Brownlee
November 16, 2015



Overview

- History
- Preferred System
- What we do
- Pending legislated changes and future plans
- Strategy 1 to Strategy 6
- Questions

History

- Waste Management System Plan initiated in 1994
 - Approved 2002
 - Planning period of 20 years (2022)
- Amalgamation in 2001
- Preferred System review initiated in 2003
 - Adopted 2005
 - Major components in place by 2009

Preferred System (main components)

Co-collection

Household Garbage

- Up to 3 bags per week

Leaf & Yard Trimmings and Christmas Trees

- Unlimited quantity per week

Co-collection

Blue Box Recyclables

- Unlimited quantity per week
- One stream

Household Organics

- Unlimited quantity per week
- One stream

Ensure that the **four waste streams** will be collected:

- on the same day;
- at the same collection location; and
- no earlier than 7 a.m.

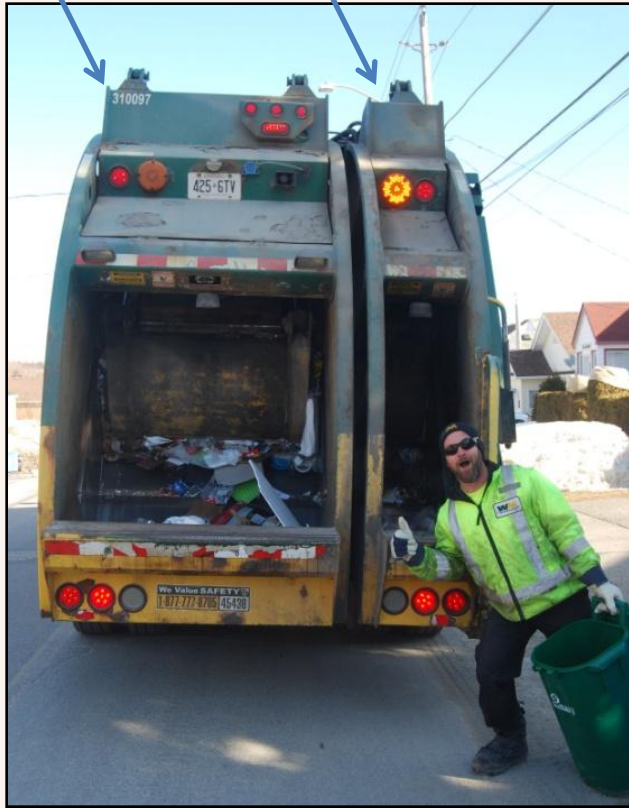
Preferred System (main components)

Co-Collection

- Household Garbage
 - Up to 3 bags per week
- Leaf & Yard Trimmings and Natural Christmas Trees
 - Unlimited quantity per week



Preferred System (main components)



Co-Collection

- Blue Box Recyclables
 - Unlimited quantity per week
- Green Cart Organics
 - Unlimited quantity per week

Preferred System (main components) – con't

- Blue Box Processing
- Organic Processing
- Landfill Disposal



What we do – Collection Services



- Residential curbside co-collection
- Residential centralized collection
- Specialized collection
- Limited IC&I Sector

What we do – Diversion Services



- Blue Box Recycling Materials
- Household Hazardous Waste
- Leaf & Yard Trimmings
- Organics
- Electronic Waste & Tires
- Miscellaneous Items

What we do – Disposal Services

- Landfill & Waste Diversion Sites
- Small Vehicle Transfer Site
- Closed Sites



What we do – Various



- Clean-up Programs
 - Adoptions, The Blitz, Trash Troopers, roadside litter containers and automated litter collection units
- 3R Equipment
 - Recycling and Composting
- Education
 - Training, website, print & video, education centre

Pending Legislation & Future Plans

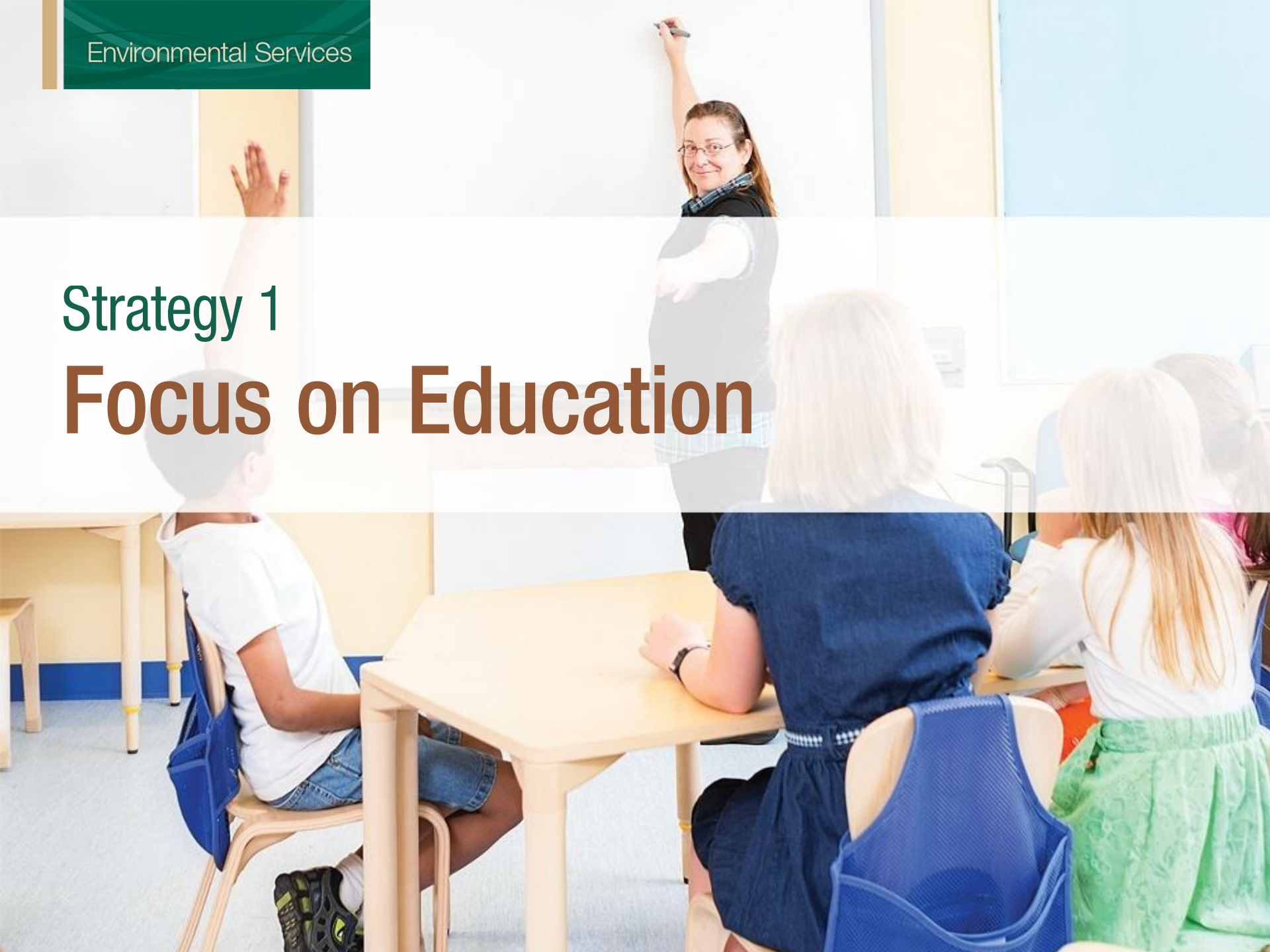
- Pending changes for waste reduction expected in 2015
 - High level, enabling legislation
 - Expected to transfer 100% responsibility for end of life management of designated packaging and products to producers
 - Anticipate that all the details and transition will need to be worked out in development of regulations
- Preferred System (Master Plan) update tentatively scheduled to commence in 2021

Solid Waste Strategies

- Strategy 1 – Focus on Education
- Strategy 2 – The Construction & Demolition Material Recycling Site
- Strategy 3 – Increase Policies that Induce Waste Diversion
- Strategy 4 – Solid Waste Processing & Disposal
- Strategy 5 – Expand the Organic Program
- Strategy 6 – In House Initiatives

Strategy 1

Focus on Education





- Develop interactive learning tools – Smart Board
- Develop interactive learning tools – Hands on
- Develop a 3R curriculum for school aged children
- Pilot a Community Door to Door 3R Educational Campaign

Completed & Ongoing

Completed & Ongoing

Completed & Ongoing



Thank you to Canada Fibers Ltd. and Waste Management of Canada for their generous donations towards reimbursement of transportation costs.

Update in 2016

Strategy 2

The Construction and Demolition Material Recycling Site



- Environmental Compliance Approvals
- Construction of the Site
- Review expanding the current program

Completed

To be finalized in 2016-17

Update in 2018-19

Asphalt Shingles



Non-Recyclable Glass



Includes broken window panes, mirrors, glass tiles, etc.

Non-Metal Fixtures



Includes toilets, sinks, granite counter tops, etc.

Non-Wooden Flooring



Includes carpeting, vinyl flooring, etc.

Strategy 3

Increase Policies that Induce Waste Diversion





- Eliminate the weekly residential landfill exemption (from 50kg to 0 kg)
- Reduce the Residential Garbage Bag Limit from Three (3) to Two (2)
- Change the Garbage/Leaf & Yard Trimmings Co-Collection Frequency from Weekly to Every Two Weeks

Not recommended at this time.

Update in early 2016

Update in early 2016

Strategy 4

Solid Waste Processing and Disposal Capacity





- Participate in the Development of the RPWCO Landfill Disposal Capacity Value Model and Input Details
- Future Disposal Requirements
- Update Landfill Life Projections
- Review Options to Increase Processing Capacity for Organics

Update in 2016

Update in 2016/17

One year following the full expansion of the C&D Material Recycling Program

2019/2020

Strategy 5

Expand the Organic Program



- Organic Collection for Multi-Unit Residential Properties on a Centralized Collection System
- Industrial, Commercial & Institutional Organic Waste
- Special Events Organic Collection Program

Update in 2017

Update in 2017

Update in 2017

Strategy 6

Divisional Improvements





- The Waste Wizard
- What's my collection day?
- Custom integrated software for AVL/GPS technology systems

2016

2017

2016-2017

City owned vehicles

2020-2021

Contractor vehicles

QUESTIONS?