



# Transportation Study Report Project Update

Presentation to the Operations Committee  
March 23, 2015

Brett Sears, MCIP, RPP  
Project Manager  
Transportation Planning



# Presentation Outline

- What is this project about?
- Study history
- Environmental Assessment process
- Extent of public consultation
- Transportation policy development
- Roads analysis
- Active transportation
- Next steps





# What is This Project About?

- Prepare Sustainable Transportation Network for the year 2031:
  - Identify and prioritize road investments
  - Prepare active transportation plan
  - Develop supporting policies
- Principles:
  - Healthy Communities
  - Sustainability
  - Economic Vitality
- Support Official Plan Review process



# Study History

- Project commenced in the fall of 2011
- Public Information Centre #1 – January 2012
- Analyzed alternative future scenarios
- Developed draft recommended road and active transportation networks
- Prepared supporting policies
- Public Information Centre #2 – June 2013
- Gathered feedback, revising analysis, preparing draft report





# Municipal Class Environmental Assessment Process for Master Plans

- Required to complete Phases 1 and 2
  - Phase 1: Identify problem or opportunity
  - Phase 2: Analyze alternative solutions
  - Public Consultation





# Phase 1: Opportunity Statement

- Enhance transportation system to:
  - Address current deficiencies
  - Accommodate growth in population and employment
- Develop multi-modal system to:
  - Address the directions set by the Province, and by City Council in the Official Plan
  - Support intensification of land use
  - Reflect greater sustainability



# Key Opportunities

- Support biking, walking, and transit
- Implement solutions to address congestion
- Create more direct routings
- Support intensified land use in designated growth areas

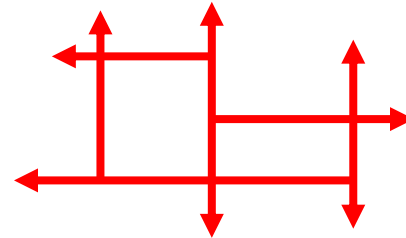




# Phase 2: Alternatives Analysis

Three alternatives analyzed using multiple criteria:

1. **“Do Nothing”** - *no further transportation investments*
2. **Auto-focused** - *construct all roads previously studied*
3. **Sustainability-focused** - *strategic, optimized investment*







# Extent of Public Consultation

- 85 public events related to the Official Plan Review
- 2 transportation-specific Public Information Centres
- Meetings with the Sustainable Mobility Advisory Panel (SMAP) and trucking industry
- Numerous interviews with the media
- 500+ responses to online survey





# Complete Streets Policy

- Designed, constructed, operated and maintained for all modes of transportation and all types of users
- Safer for all users
- Supports livable communities
- Positive impacts on public health
- Economic benefits – people want to be there





# Sidewalk Priority Policy

- Adapted from the City of Victoria's "Pedestrian Master Plan" and the City of Peterborough's "Sidewalk Strategic Plan"
- Points are awarded based on specified criteria for each area:
  - Highest priority is given to those areas with the largest total score

| Criteria              | Description   | Points Given |
|-----------------------|---|--------------|
| Road Type             | Arterial  | 10           |
|                       | Collector   | 5            |
|                       | Local   | 1            |
| Pedestrian Generators | Within 500 m of hospital, library, place of work, arena, etc. | 7            |
| Commercial Land Use   | Downtown  | 10           |
|                       | Commercial Area   | 7            |
| Transit               | Along Transit Route   | 5            |
| School Proximity      | < 0.5 km  | 6            |
|                       | 0.5 km to 1.4 km  | 3            |
|                       | 1.5 km to 2.0 km  | 1            |
| Road Width            | Number of lanes   | 1 - 6        |
| Existing Pathways     | None  | 10           |
|                       | Informal Path   | 7            |
|                       | Trail (within 500 m)  | 5            |
| Public Concerns       | Number of formal requests received                            | 1 - 7        |



# Road Analysis Process

- Analysis considering:
  - Existing volume
  - Forecast future congestion
  - Active transportation
  - Goods movement
  - Environmental impact
  - Construction cost
  - Public feedback





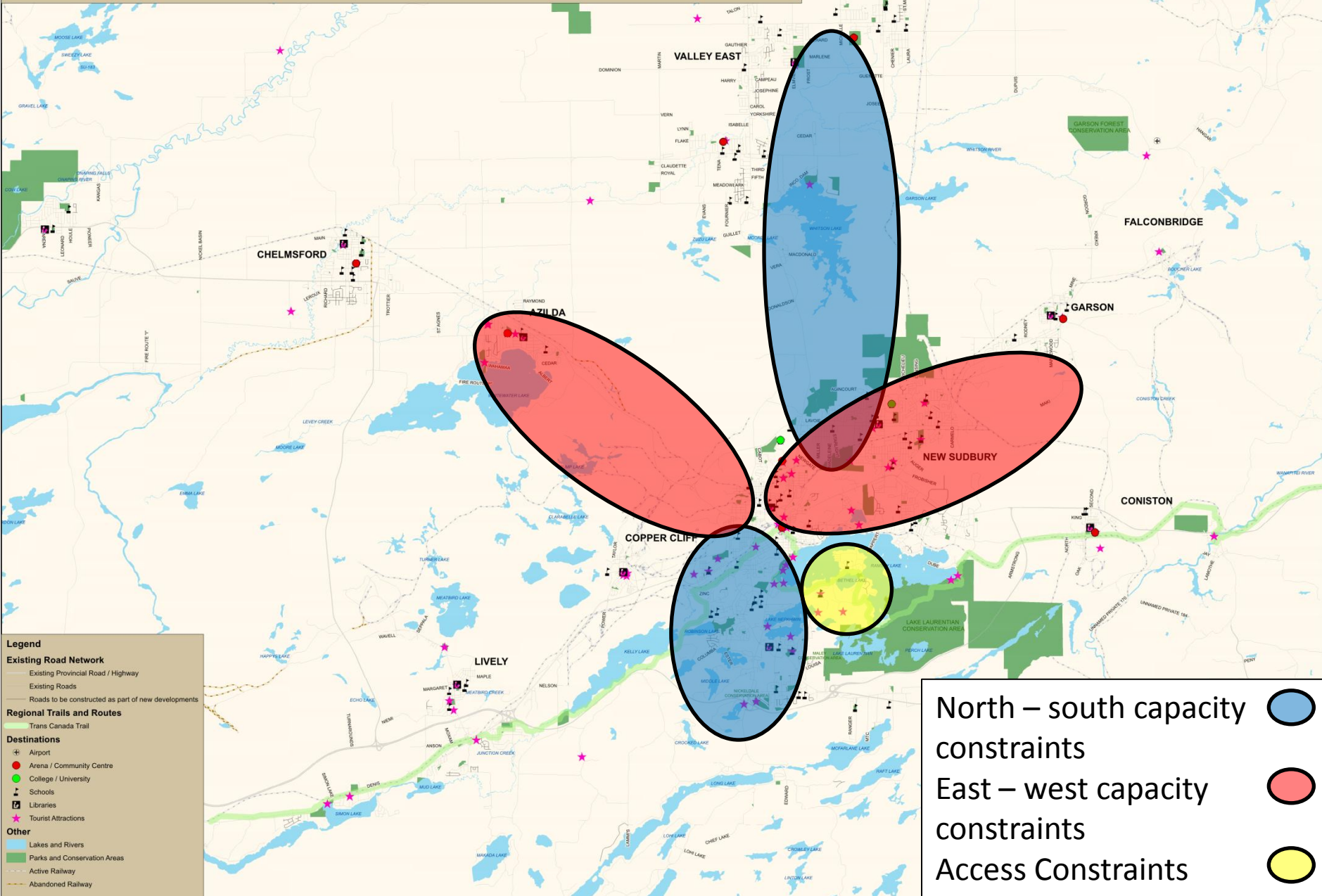


# Road Challenges and Opportunities

- East–west capacity constraints
- North–south capacity constraints
- Access constraints
- Development-driven roads









# Active Transportation Recommendations

- Implement the active transportation network over time, in conjunction with planned road work
- Designate an active transportation coordinator
- Schedule inter-departmental meetings to coordinate initiatives



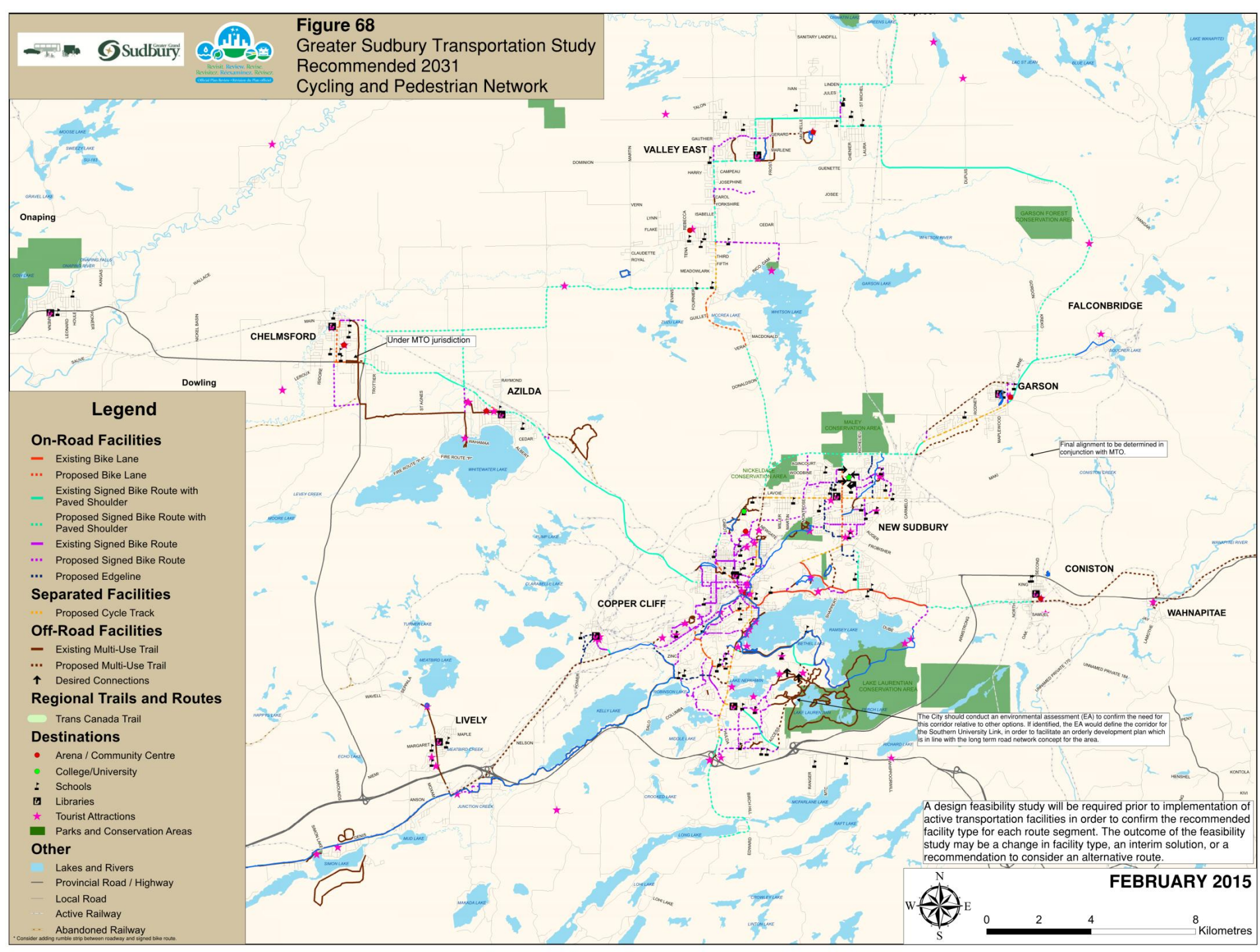




# Active Transportation Recommendations

- Provide bicycle parking at public buildings
- Develop a bicycle parking program to install bicycle racks where there is a demonstrated need
- Explore additional funding opportunities







# Next Steps

- After publishing the Notice of Study Completion:
  - Public Open House in mid April
  - Conduct Environmental Assessments of road projects
  - Conduct design feasibility studies of active transportation projects





# Questions and Answers