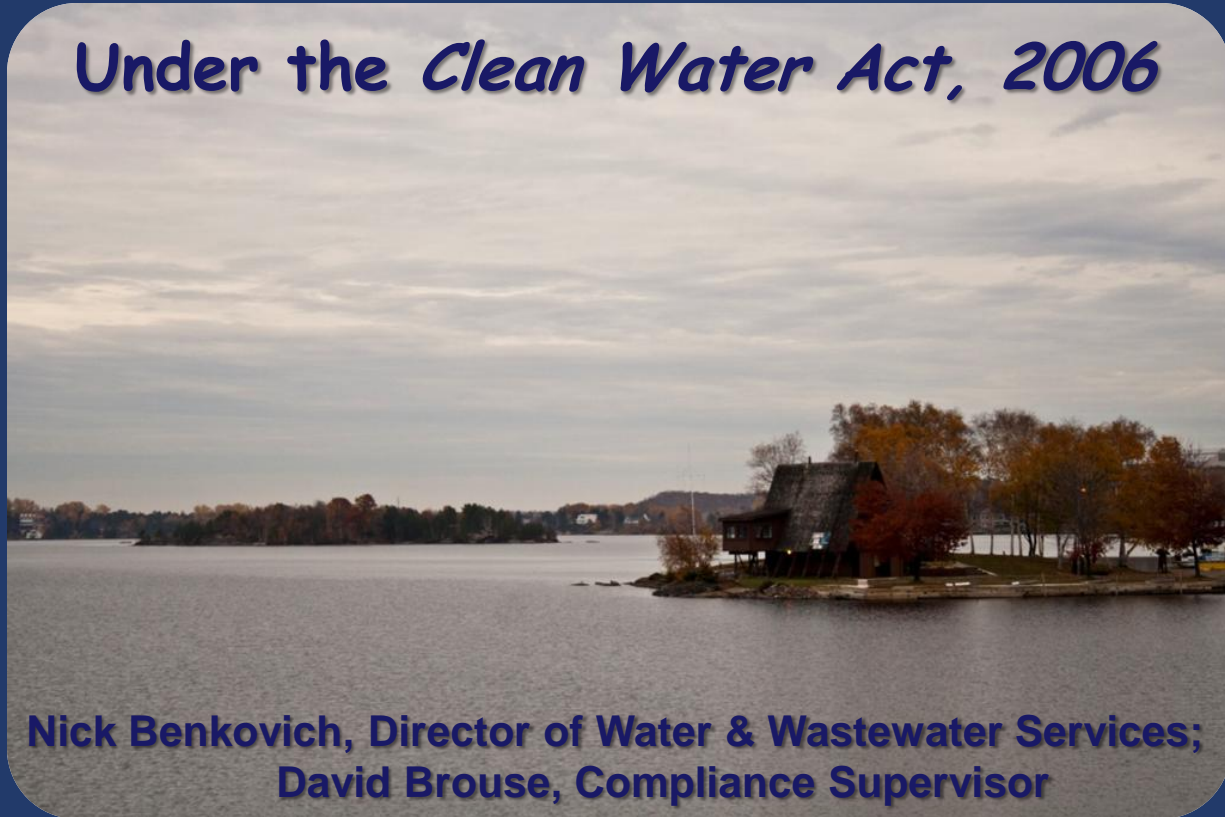


Implementation of Enforcement Measures for Drinking Water Source Protection



Under the Clean Water Act, 2006



**Nick Benkovich, Director of Water & Wastewater Services;
David Brouse, Compliance Supervisor**

Operations Committee
Tuesday, February 3rd, 2015



Presentation Outline

- The Walkerton Inquiry
- Legislative Requirements
- Timelines
- Staffing and Preparedness
- Source Protection By-Law
- Financial Implications



The Walkerton Inquiry

- *E. coli* contamination in municipal water system;
- 7 People died, thousands fell ill;
- Part 1: Summary of events, system failures;
- Part 2: Public Policy Development - need for a *Multi-Barrier Approach* and strong legislation



"Drinking water sources should be protected by developing watershed-based source protection plans. Source protection plans should be required for all watersheds in Ontario. The first barrier to the contamination of drinking water involves protection the sources of drinking water."



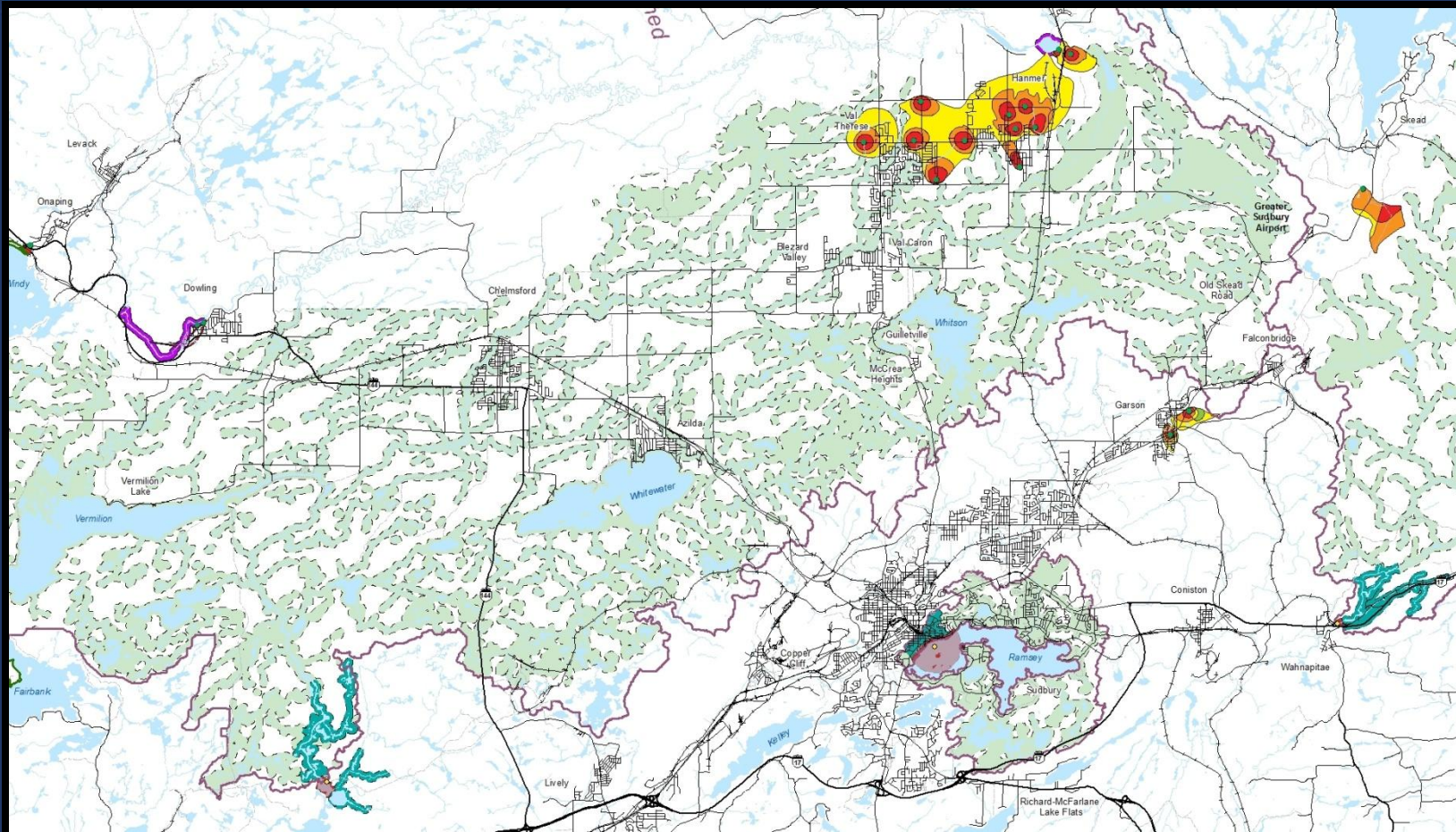
Legislative Requirements



- *Safe Drinking Water Act, 2002;*
- *Clean Water Act, 2006;*
- Source Protection Committee;
- Assessment Reports;
- Source Water Protection Plans;
- Implementation of Policies by municipality

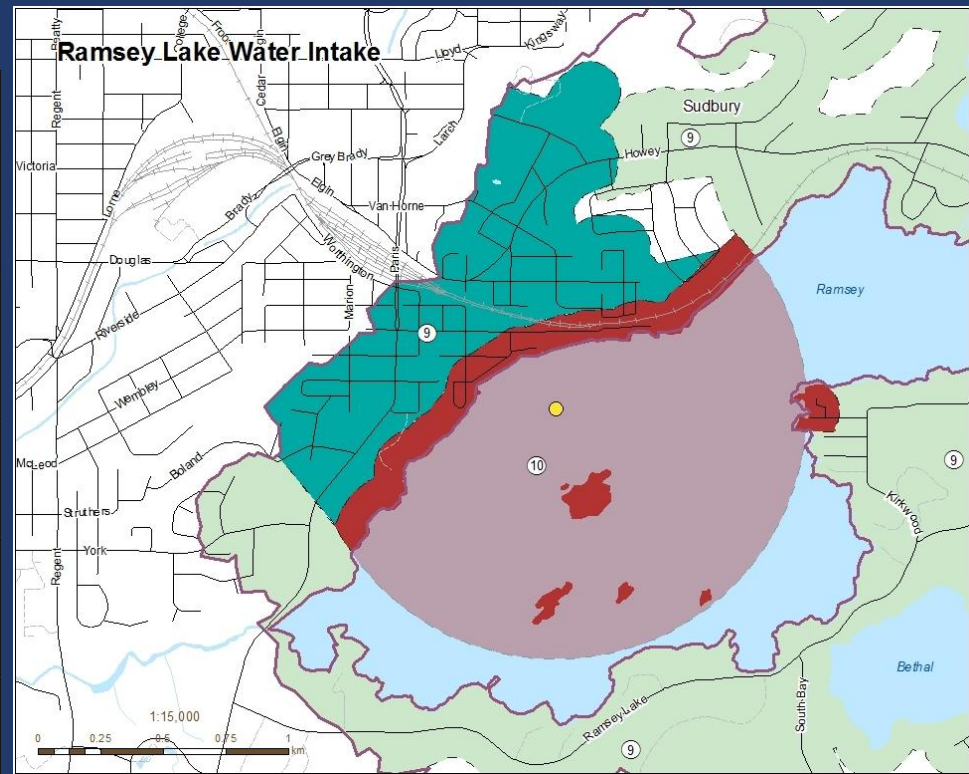
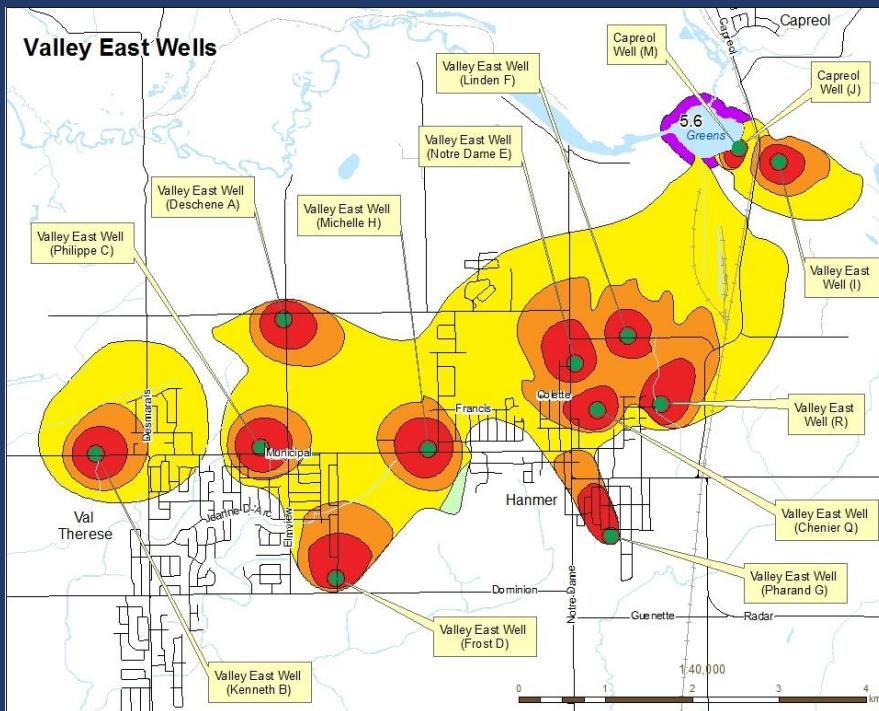


Vulnerable Areas





Vulnerable Areas





Timelines

Early Intervention,
Implementation and
Enforcement
Preparation
(2012 - 2014)

Sudbury Source
Protection Plan
Approved by
Minister
(Sept. 19, 2014)

Sudbury Source
Protection Plan
Effective Date
(Apr. 1, 2015)

Ongoing
Implementation and
Completion of RMPs
(2015 +)





Staffing

- Integrated into existing Water / Wastewater staff;
- Program to reside within Water / Wastewater Services;
- Risk Management Official / Risk Management Inspectors;
- Provincial Offences Officers;
- Training and Certification



CGS' Source Protection By-Law



- By-law provides administration & enforcement measures under Act;
- Sets out processes for proponents to make application under Part IV;
- Proposes fees associated for services & administration responsibilities



Preparedness

- Internal / external stakeholders;
- Changes to development and building permitting processes;
- Customer service (one stop) and accountability;
- Efficiency



Financial Implications

- Recommend cost recovery through proposed user fees;
- Flat Application screening fee;
- Hourly fee for services;
- Full Cost Recovery for use of "Persons with Qualifications";
- Full Cost Recovery for "Work caused to be done"



Thank You *Questions?*



Tony Cecutti

General Manager of Infrastructure Services

Nick Benkovich

Director of Water/Wastewater Services (RMO)

nick.benkovich@greatersudbury.ca

(705) 674-4455 x 6343

David Brouse

Compliance & Operational Support Supervisor (RMO/RMI)

david.brouse@greatersudbury.ca

(705) 674-4455 x 3651

Jessica Brunette

Water/Wastewater Compliance Officer (RMI/RMO)

jessica.brunette@greatersudbury.ca

(705) 674-4455 x 4820

Amanda Desjardins

Water/Wastewater Compliance Officer (RMI/RMO)

amanda.desjardins@greatersudbury.ca









(705) 674-4455 x 4827






Ward 2: Michael Vagnini

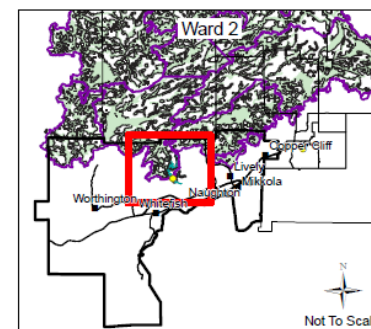
SOURCE PROTECTION WARD 2 VULNERABLE AREAS

Legend

- | | |
|---|--|
|  Ward 2 |  Community |
|  Subwatershed Boundary |  Surface Intake |
|  Waterbody |  Road |
|  Wetland |  River |

Intake Protection Zone (Surface Water)

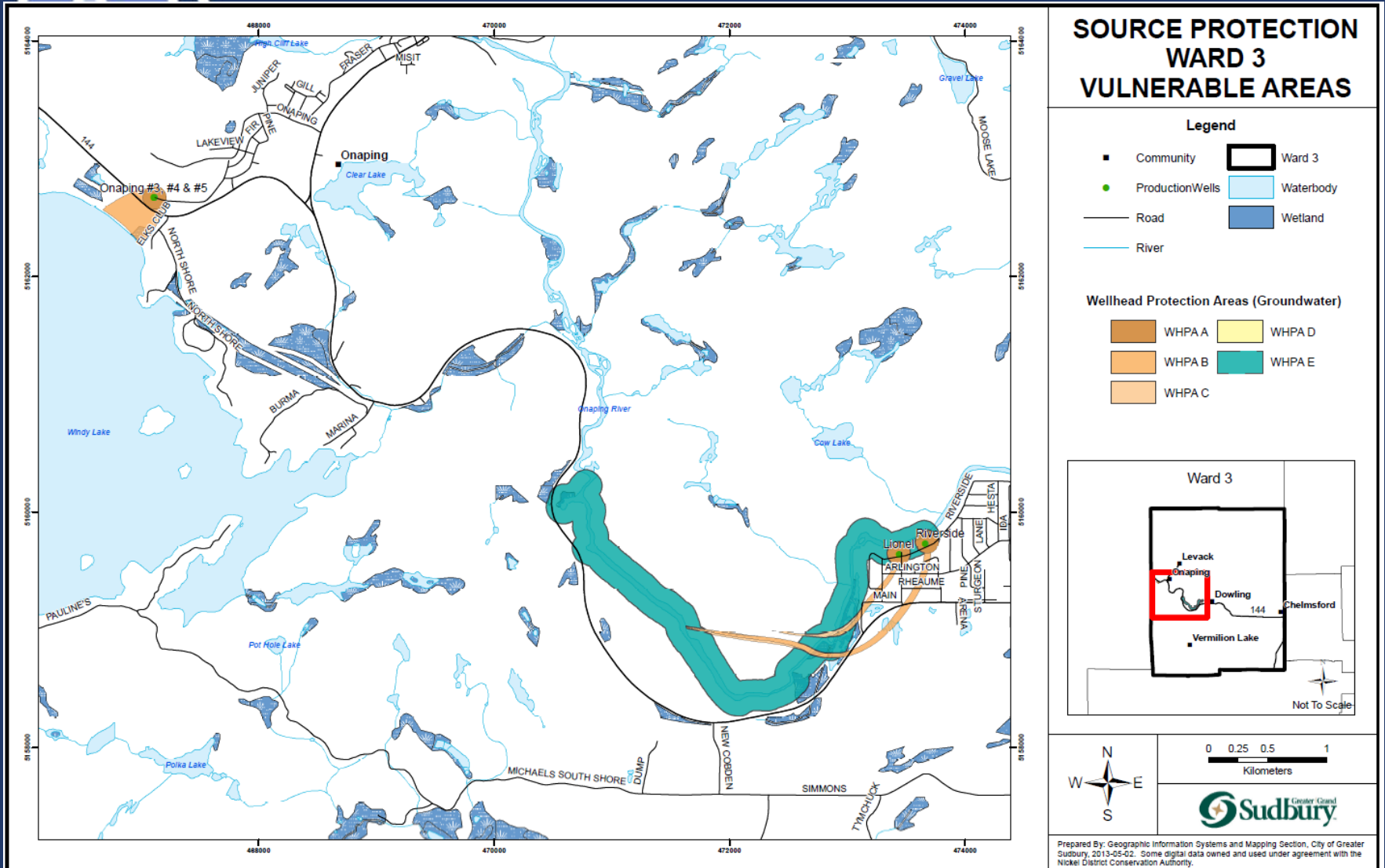
- | |
|---|
|  IPZ-1 |
|  IPZ-2 |
|  IPZ-3 |



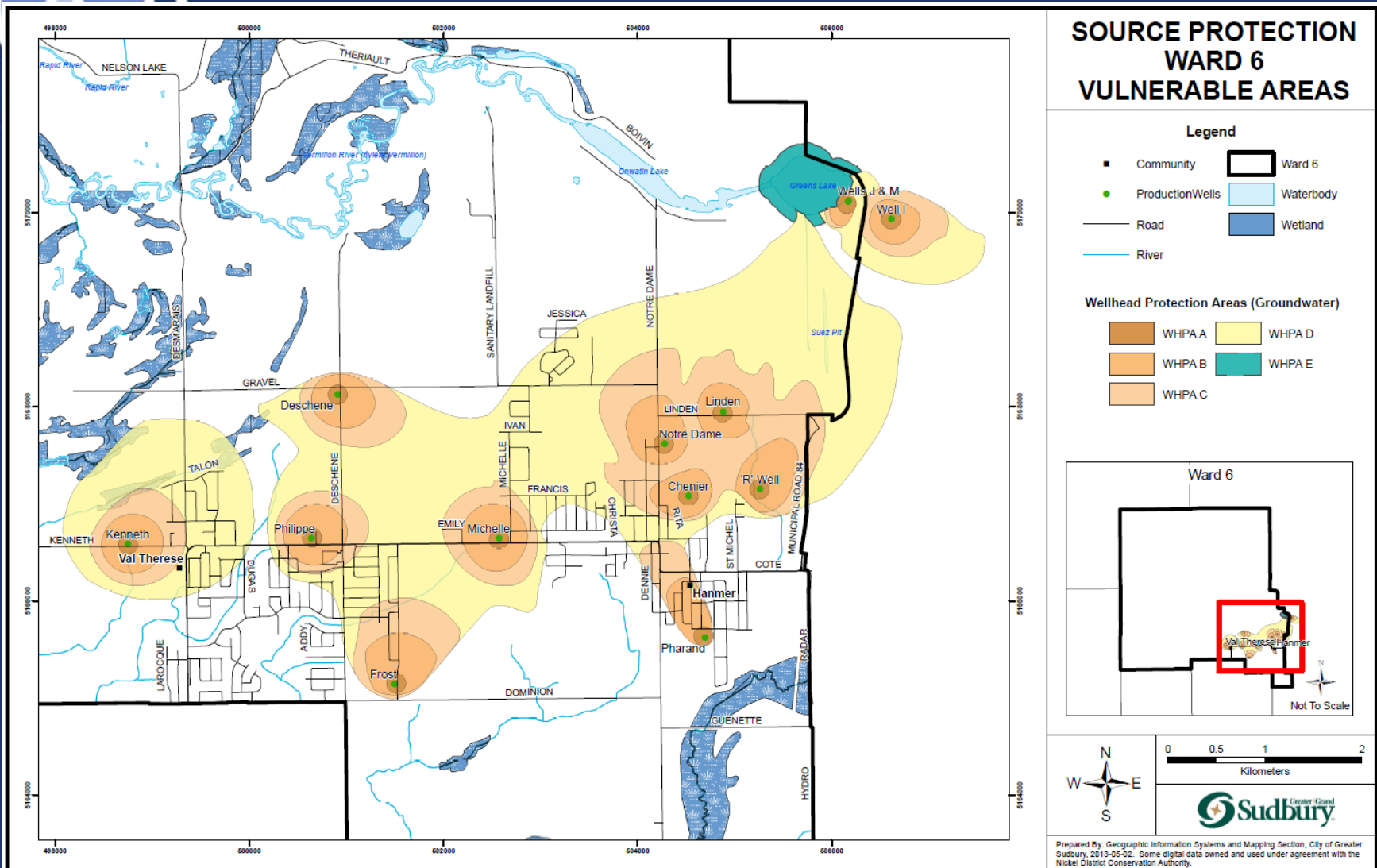
0 0.5 1 2
Kilometers



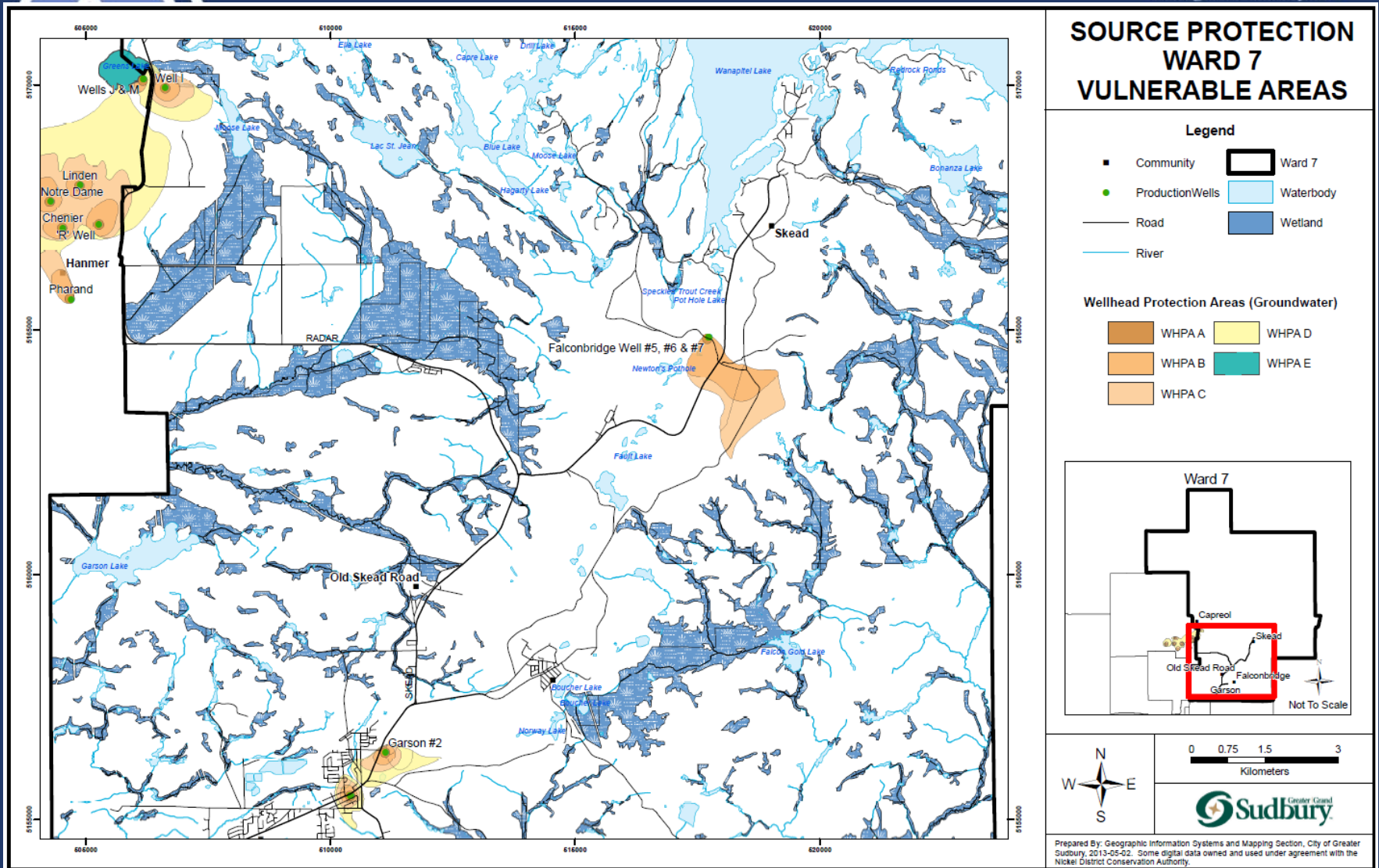
Ward 3: Gerry Montpellier



Ward 6: René Lapierre




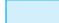


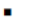

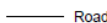

Ward 7: Mike Jakubo






Ward 8: Al Sizer

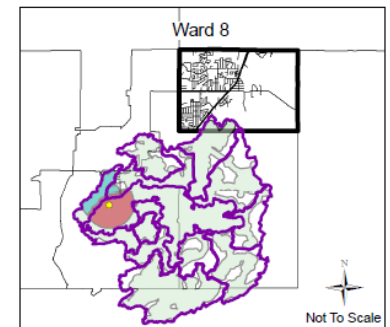
SOURCE PROTECTION WARD 8 VULNERABLE AREAS

Legend

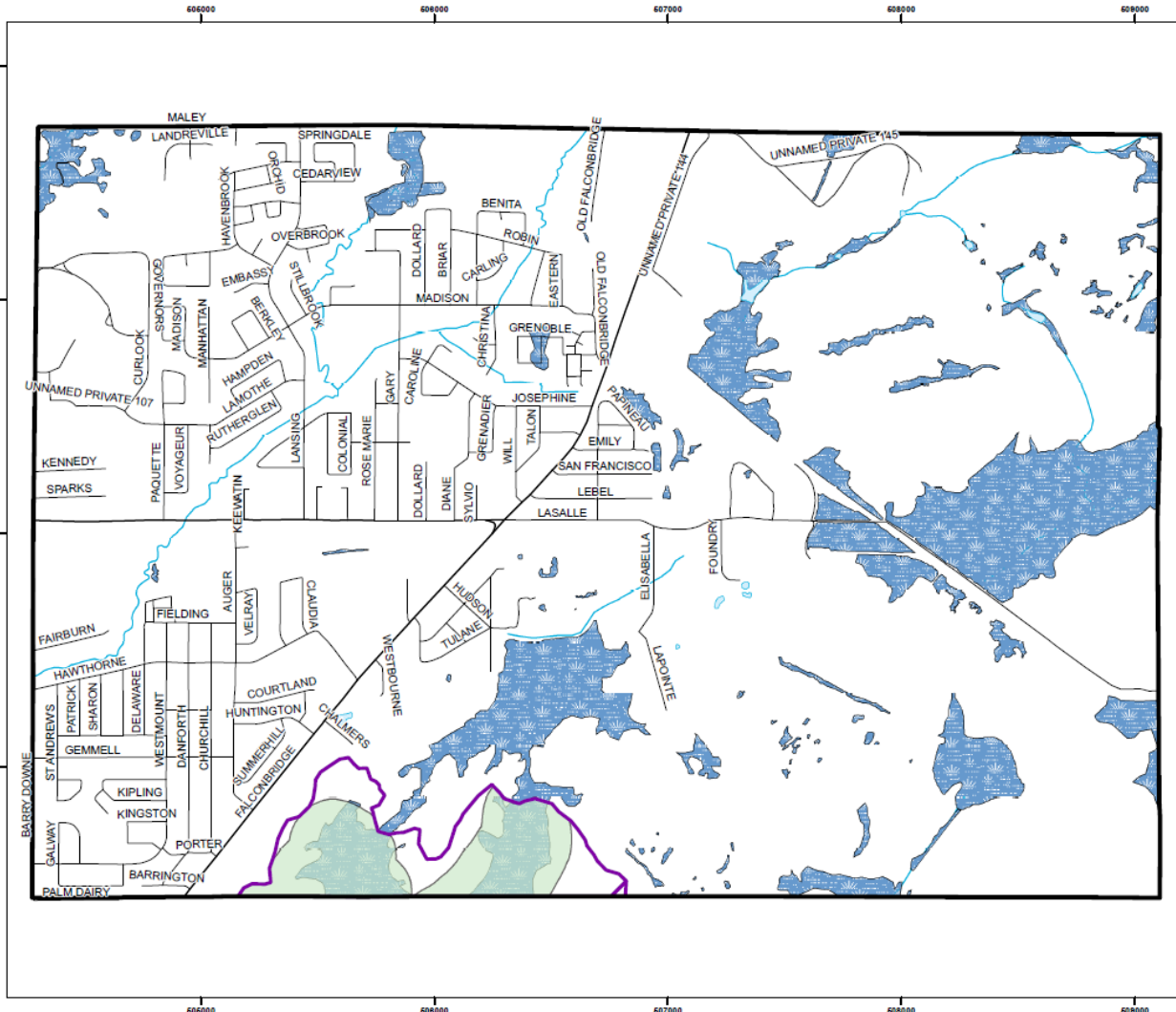
-  Subwatershed Boundary
-  Waterbody
-  Wetland
-  Ward 8
-  Community
-  Surface Intake
-  Road
-  River

Intake Protection Zone (Surface Water)

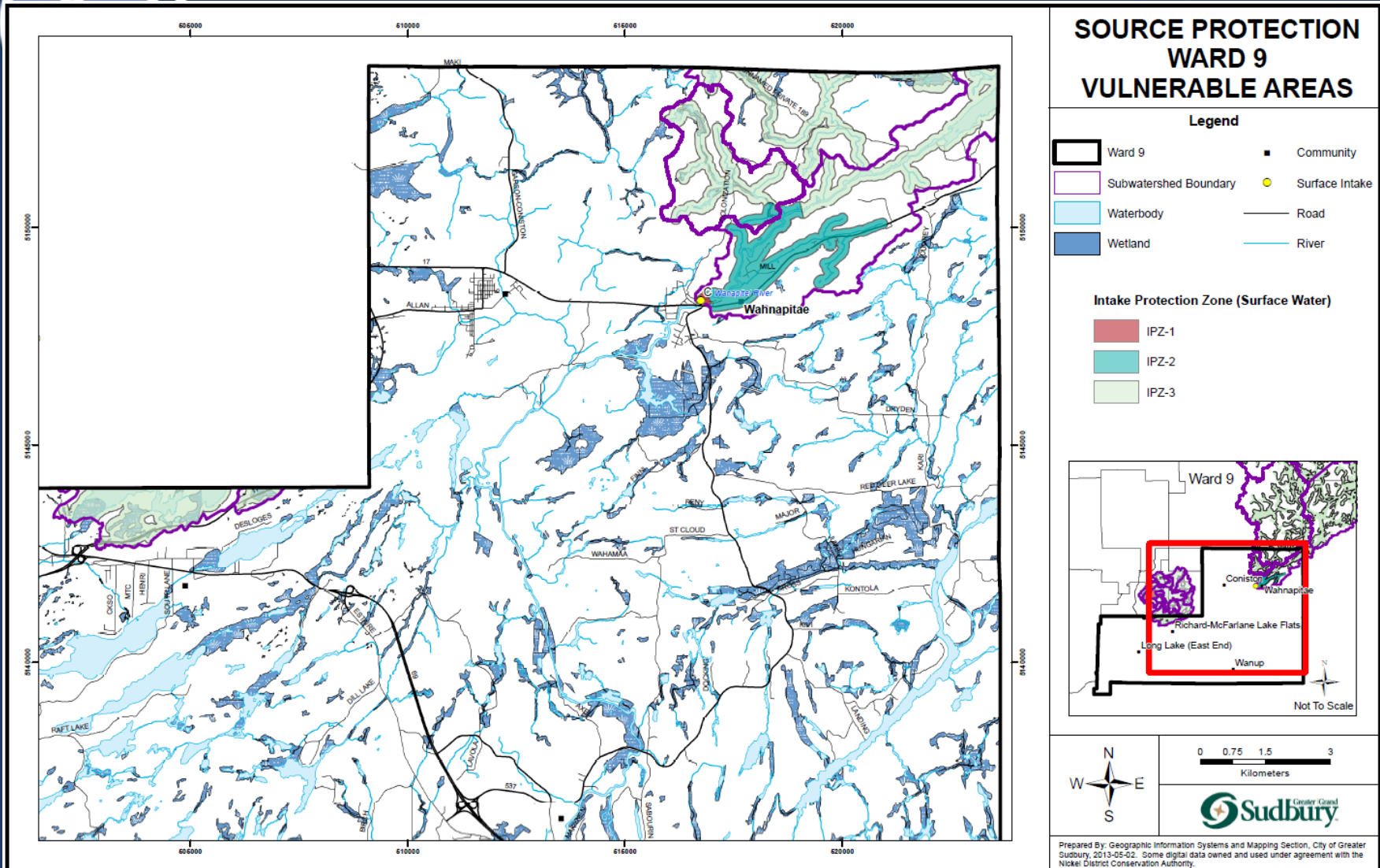
-  IPZ-1
-  IPZ-2
-  IPZ-3



0 0.25 0.5 1
Kilometers




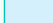






Ward 9: Deb McIntosh




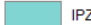

Ward 10: Fern Cormier

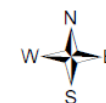
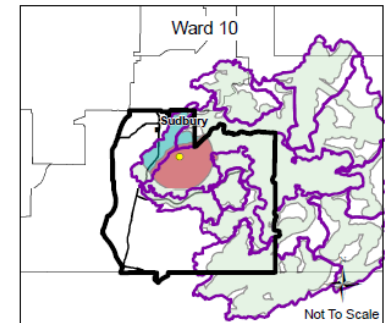
SOURCE PROTECTION WARD 10 VULNERABLE AREAS

Legend

-  Subwatershed Boundary
-  Waterbody
-  Wetland
-  Ward 10
-  Community
-  Surface Intake
-  Road
-  River

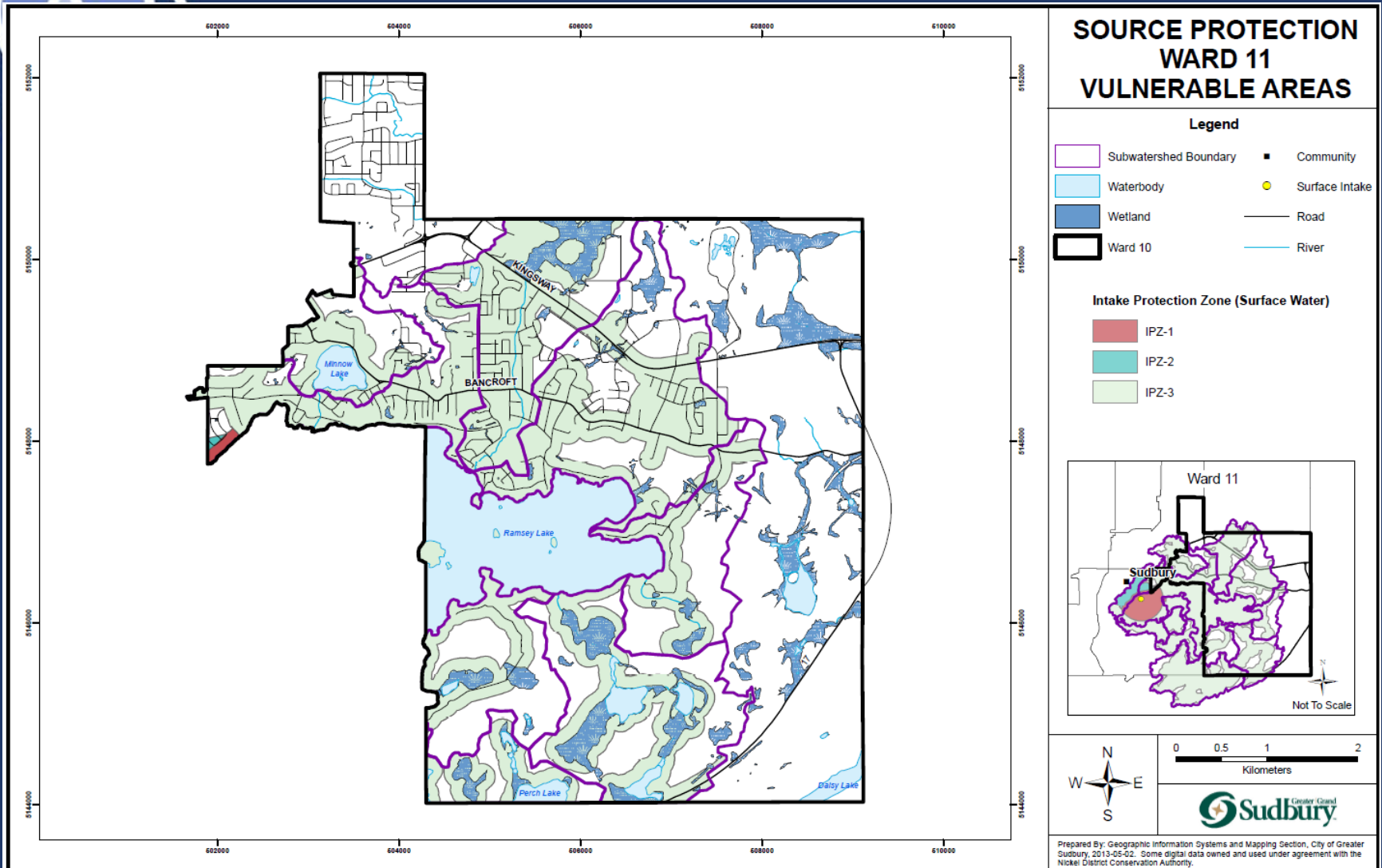
Intake Protection Zone (Surface Water)

-  IPZ-1
-  IPZ-2
-  IPZ-3



0 0.25 0.5 1
Kilometers

Ward 11: Lynne Reynolds





Ward 12: Joscelyne Landry-Altmann

