

Healthy Community Initiative

MINNOW LAKE

Social Service Facilities and Social Housing Units

Legend

■ Social Service Facility

Social Housing Units in Minnow Lake

627 Apartment, Townhouse and Semi Detached Units

0 Bachelor Units

255 1 Bedroom Units

197 2 Bedroom Units

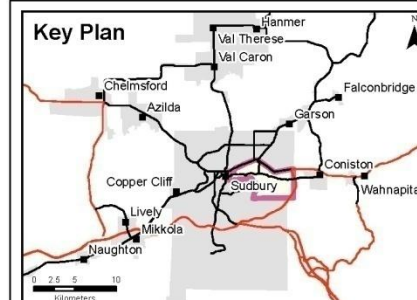
130 3 Bedroom Units

32 4 Bedroom Units

8 5 Bedroom Units

5 PKD Units

Key Plan



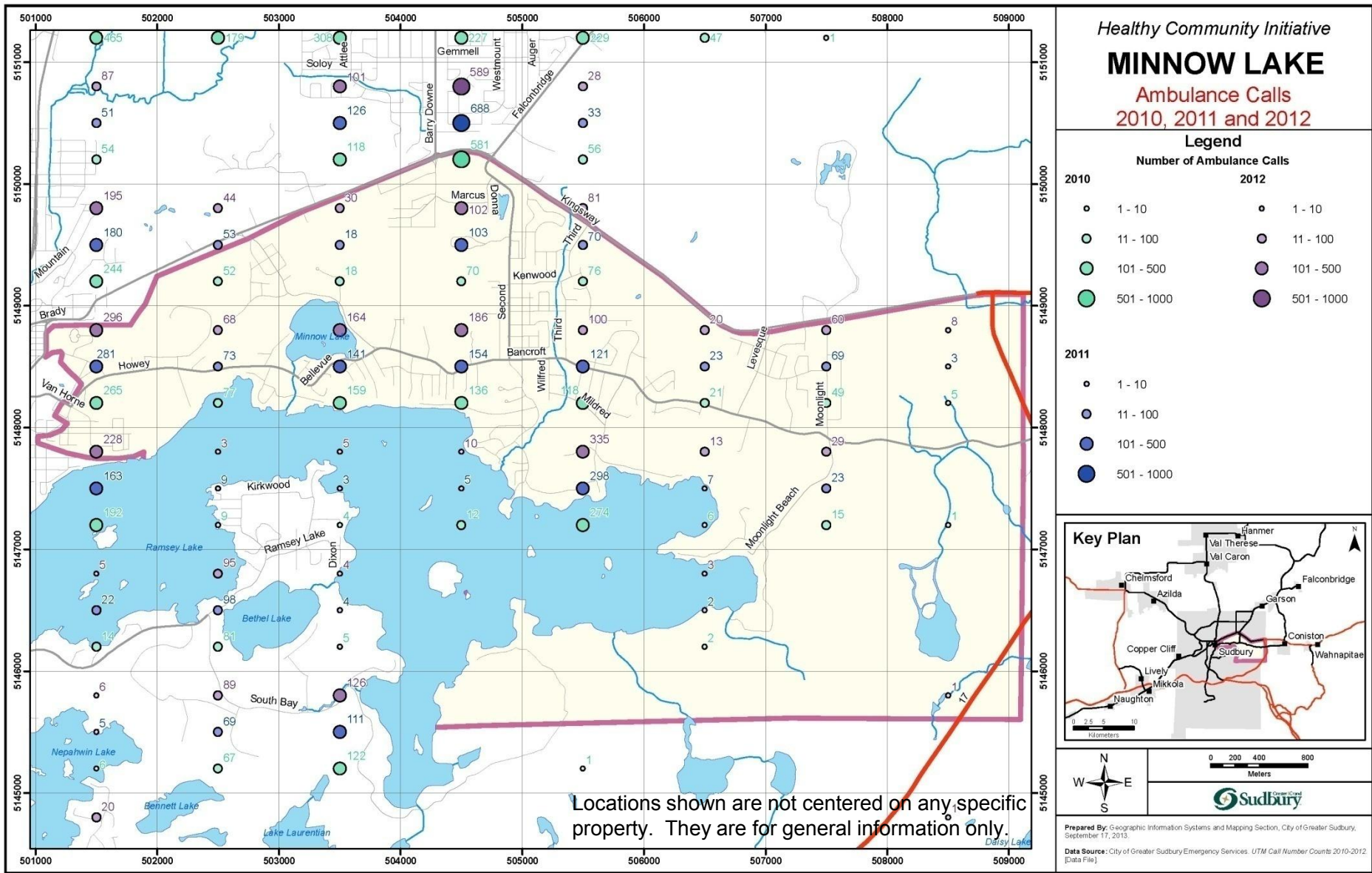
0 200 400 800
Meters



Prepared By: Geographic Information Systems and Mapping Section, City of Greater Sudbury,
August 15, 2013

Social Housing Data Source: *Housing Portfolio* CGS Apr-June 2013 [Microsoft Office Excel data file]

Social Services and Housing



Ambulance Calls

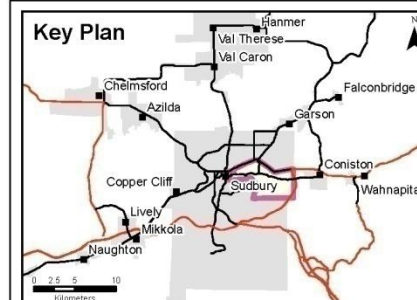
MINNOW LAKE

Transit Stops, Routes and Ridership

Legend

-  Bus Stop and 2011 Stop Ridership
-  Transit Ride Card Vendor
-  Route 002 Second Avenue Shopping Centre
-  Route 101 Howey Moonlight
-  Route 102 Third Avenue Moonlight
-  Route 103 Coniston
-  Route 141 Westmount Shopping Centre
-  Route 142 Grandview Shopping Centre
-  Route 241 Howey / Moonlight / Shopping Centre
-  Route 303 Garson Falconbridge
-  Route 304 Lasalle / Shopping Centre
-  Route 401 Barrydowne Cambrian
-  Route 402 Barrydowne / Shopping Centre
-  Route 403 Barrydowne / Madison

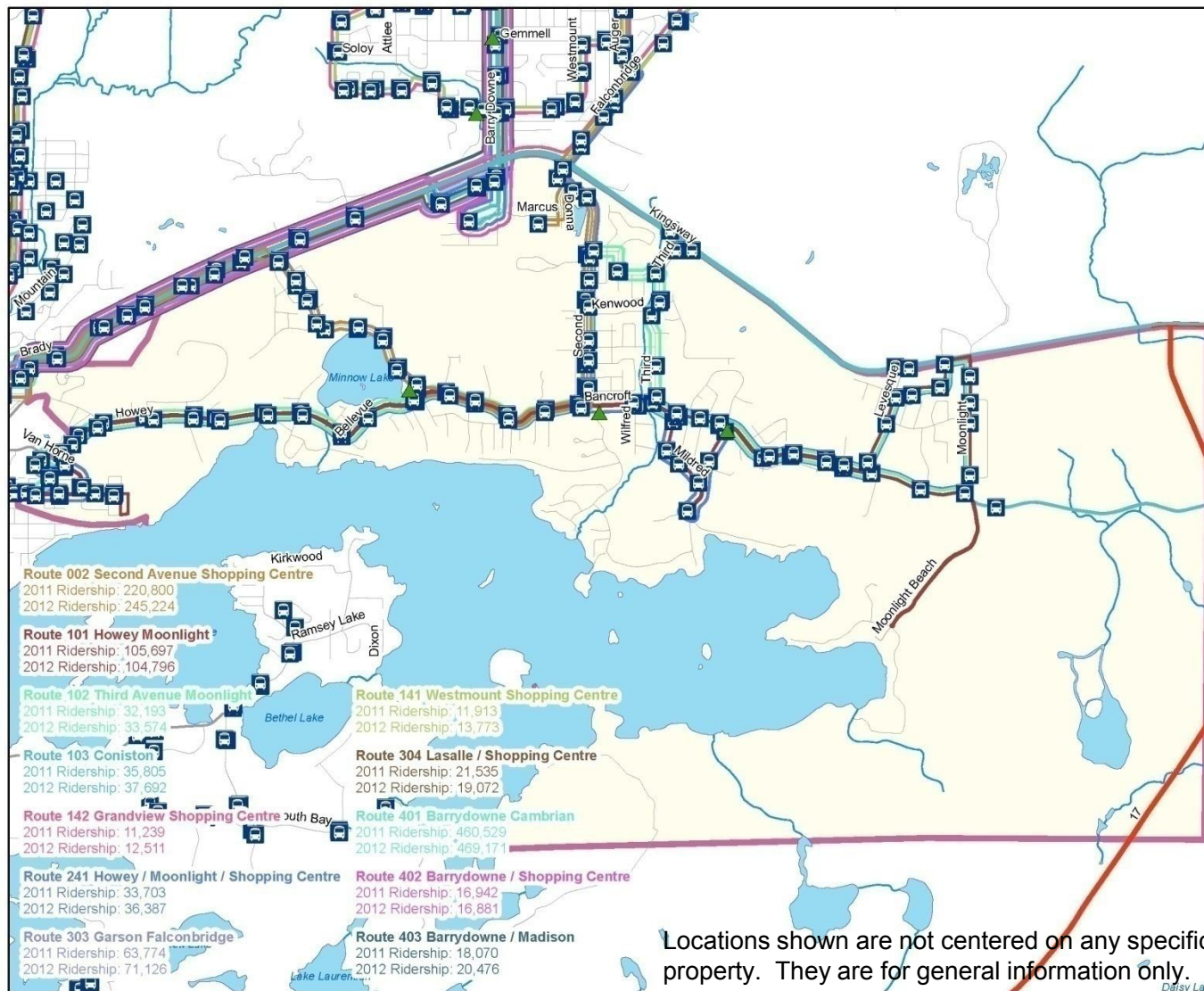
Key Plan



0 200 400 800
Meters



Prepared By: Geographic Information Systems and Mapping Section, City of Greater Sudbury,
October 1, 2013



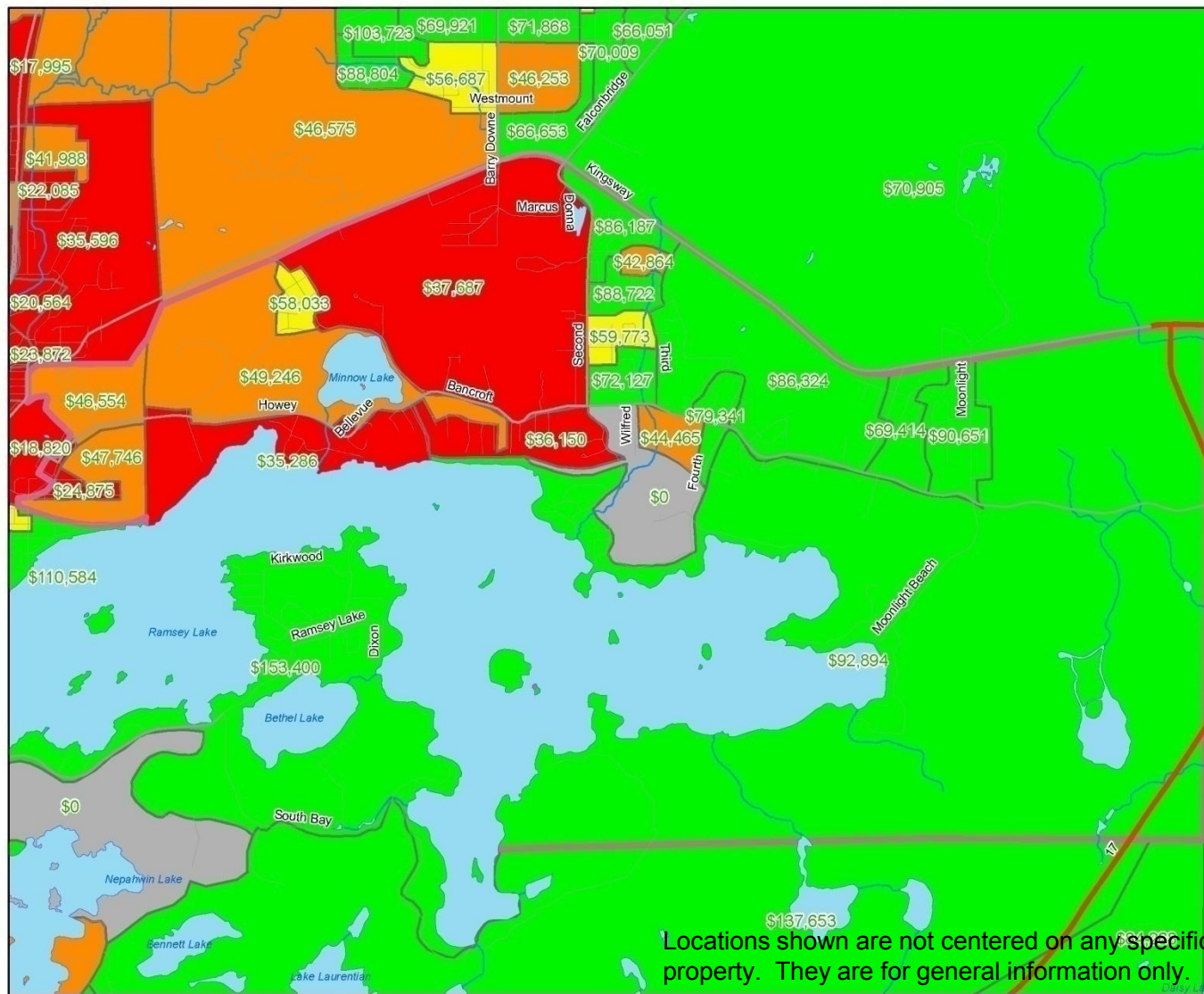
Locations shown are not centered on any specific property. They are for general information only.

Transit Stops, Routes and Ridership

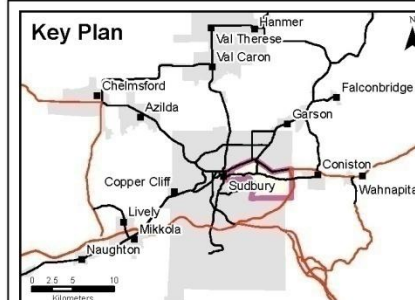
MINNOW LAKE

2011 Median Household Income

Legend



Key Plan



0 200 400 800
Meters



Prepared By: Geographic Information Systems and Mapping Section, City of Greater Sudbury, December 1, 2014.

Data Source: 2011 National Household Survey, Statistics Canada. 2011-WHS_DA_CGS.xlsx [Data File]

Median Household Income

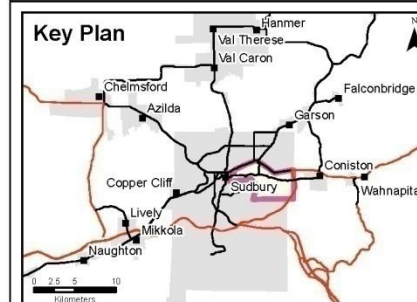
MINNOW LAKE

2011 Average Family Income

Legend



Key Plan

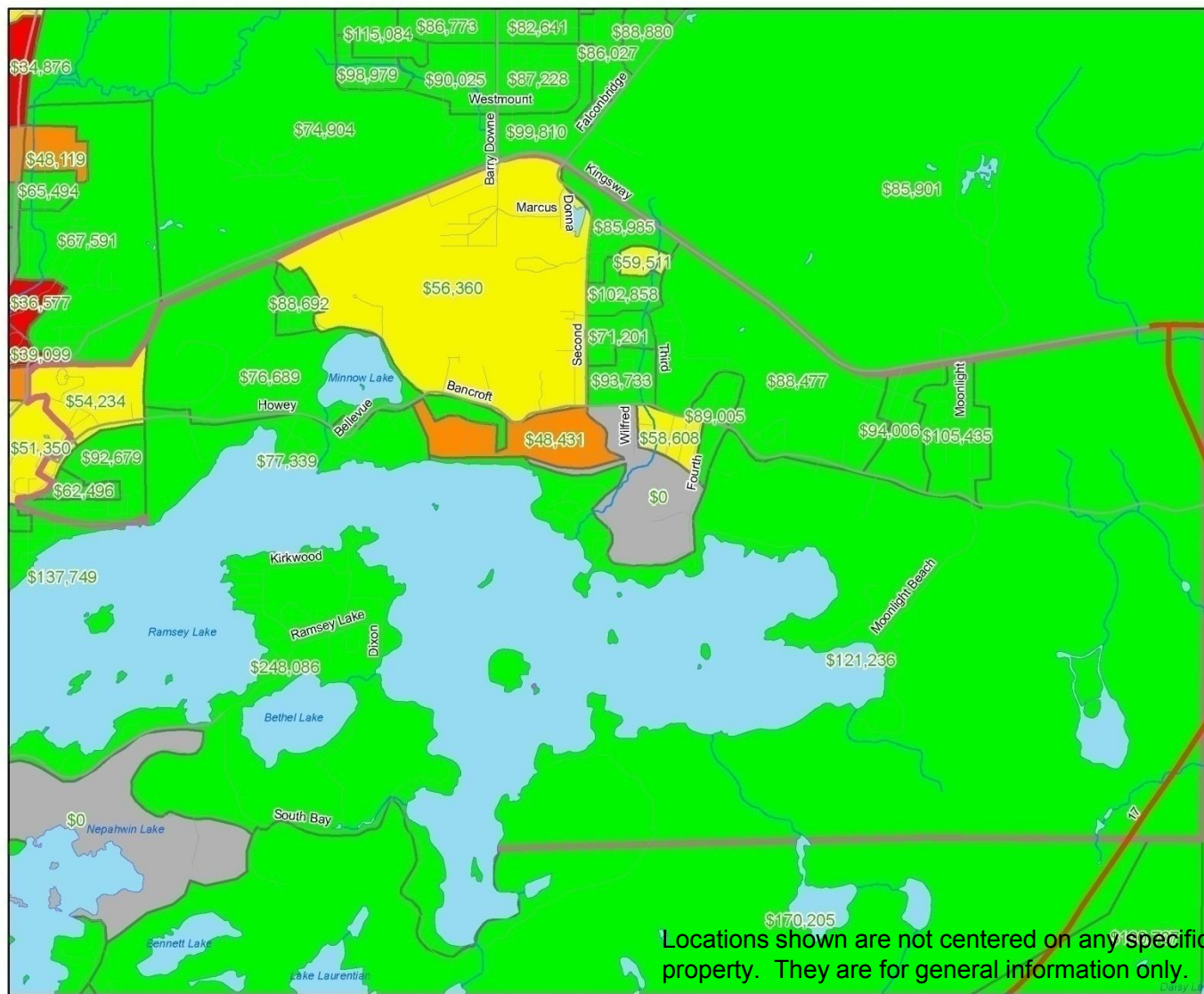


0 200 400 800
Meters



Prepared By: Geographic Information Systems and Mapping Section, City of Greater Sudbury, December 1, 2014.

Data Source: 2011 National Household Survey, Statistics Canada. 2011-WHS_DA_CGS.xlsx [Data File]



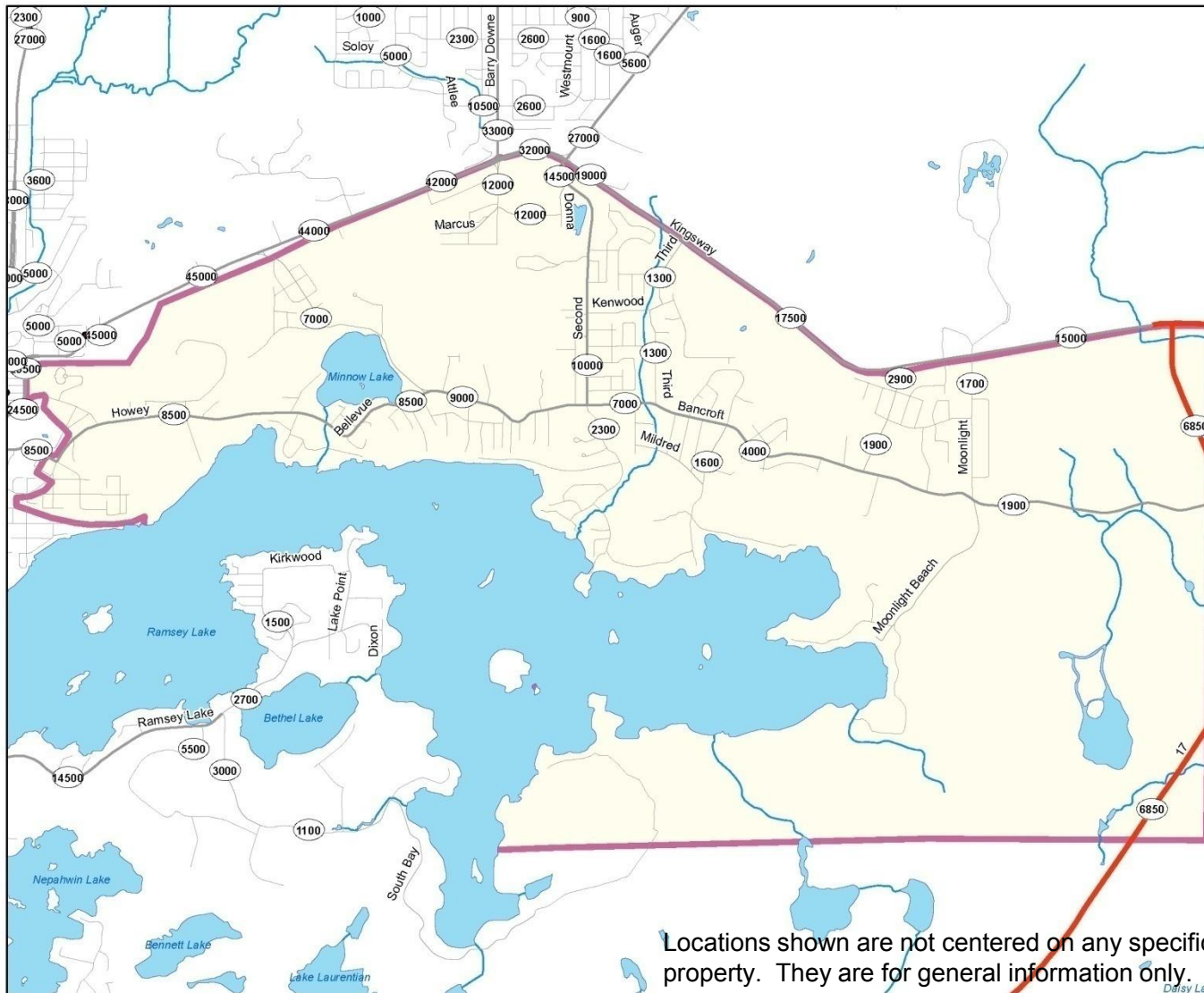
Average Family Income

MINNOW LAKE

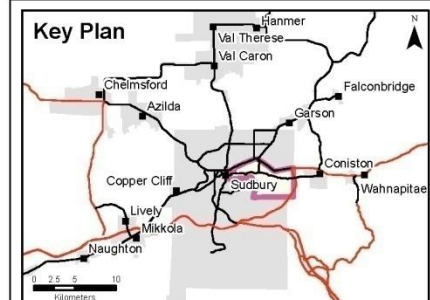
Annual Average Daily
Traffic Count

Legend

(2100) Annual Average Daily Traffic Count



Key Plan



0 200 400 800
Meters



Prepared By: Geographic Information Systems and Mapping Section, City of Greater Sudbury,
September 19, 2013.

Data Source: Provincial Highway traffic count data from M.T.O. (2007).

Traffic Counts

The Donovan Community Profile

Based on the 2011 Census and National Household Survey



A HEALTHY COMMUNITY INITIATIVE
PREPARED BY THE COMMUNITY & STRATEGIC PLANNING SECTION
CITY OF GREATER SUDBURY
October 2014

Flour Mill Community Profile

Based on the 2011 Census and National Household Survey



Levack Community Profile

Based on the 2011 Census and National Household Survey



New Sudbury Community Profile

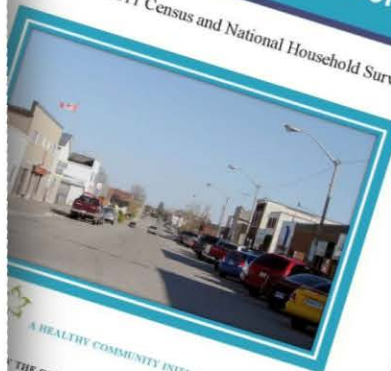
Based on the 2006 and 2011 Census



A HEALTHY COMMUNITY INITIATIVE
PREPARED BY THE COMMUNITY & STRATEGIC PLANNING SECTION
GREATER SUDBURY
September 2014

Capreol Community Profile

Based on the 2011 Census and National Household Survey



A HEALTHY COMMUNITY INITIATIVE
PREPARED BY THE COMMUNITY & STRATEGIC PLANNING SECTION
CITY OF GREATER SUDBURY
September 2014

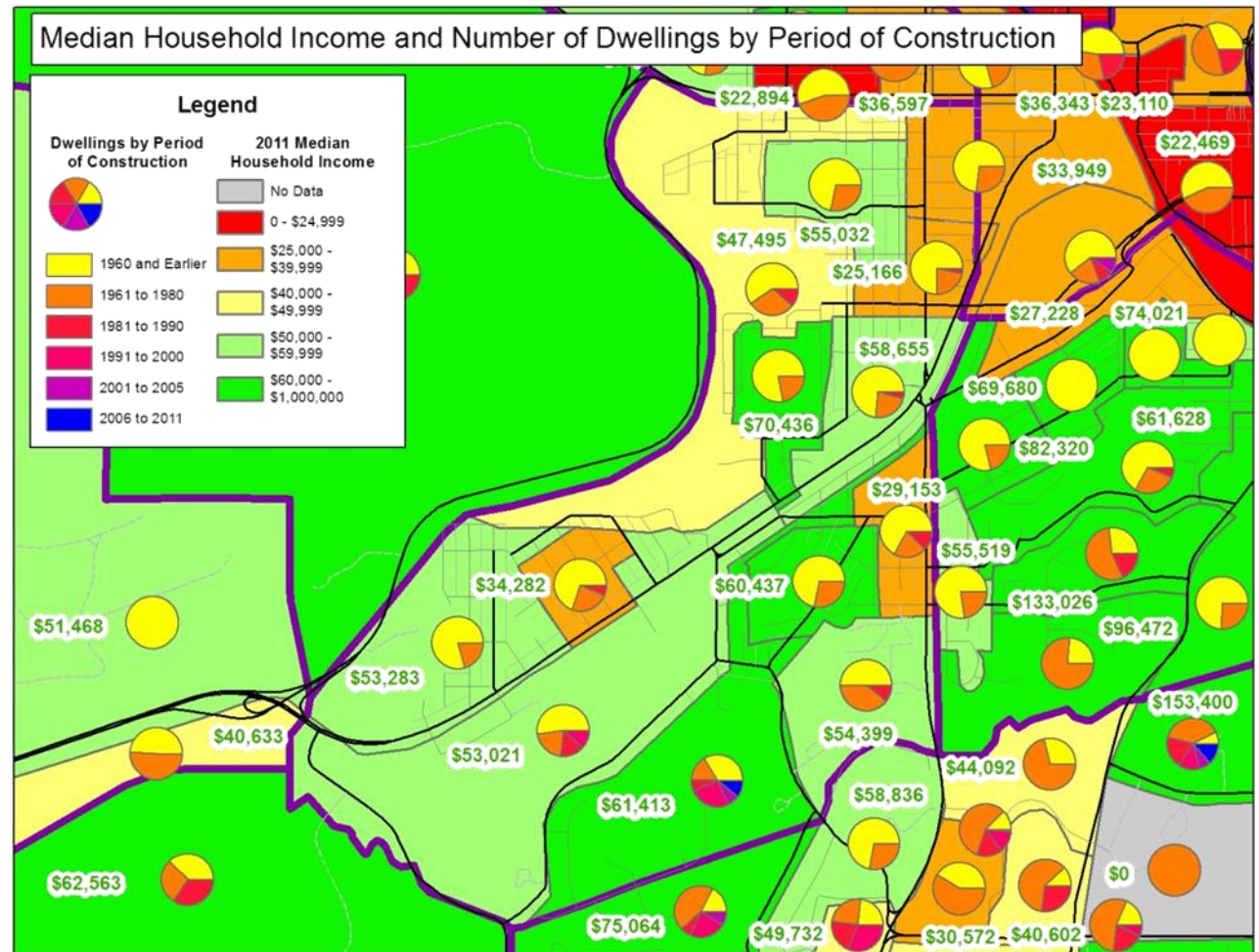
What can we use this data for?

- Some examples of questions and applications we can utilize the Neighbourhood profiles for:
 - Social Housing
 - Children Services
 - Library Services
 - Leisure Services
 - Other

Social Housing

- The CGS receives provincial funding to deliver a home repair program to low income homeowners.
- In order to help target the delivery of the program, the system data could be used to identify neighborhoods with older homes owned by low income households.
- Program advertising and/or application information could then be distributed in those areas, ensuring maximum use of funding to the desired target group.

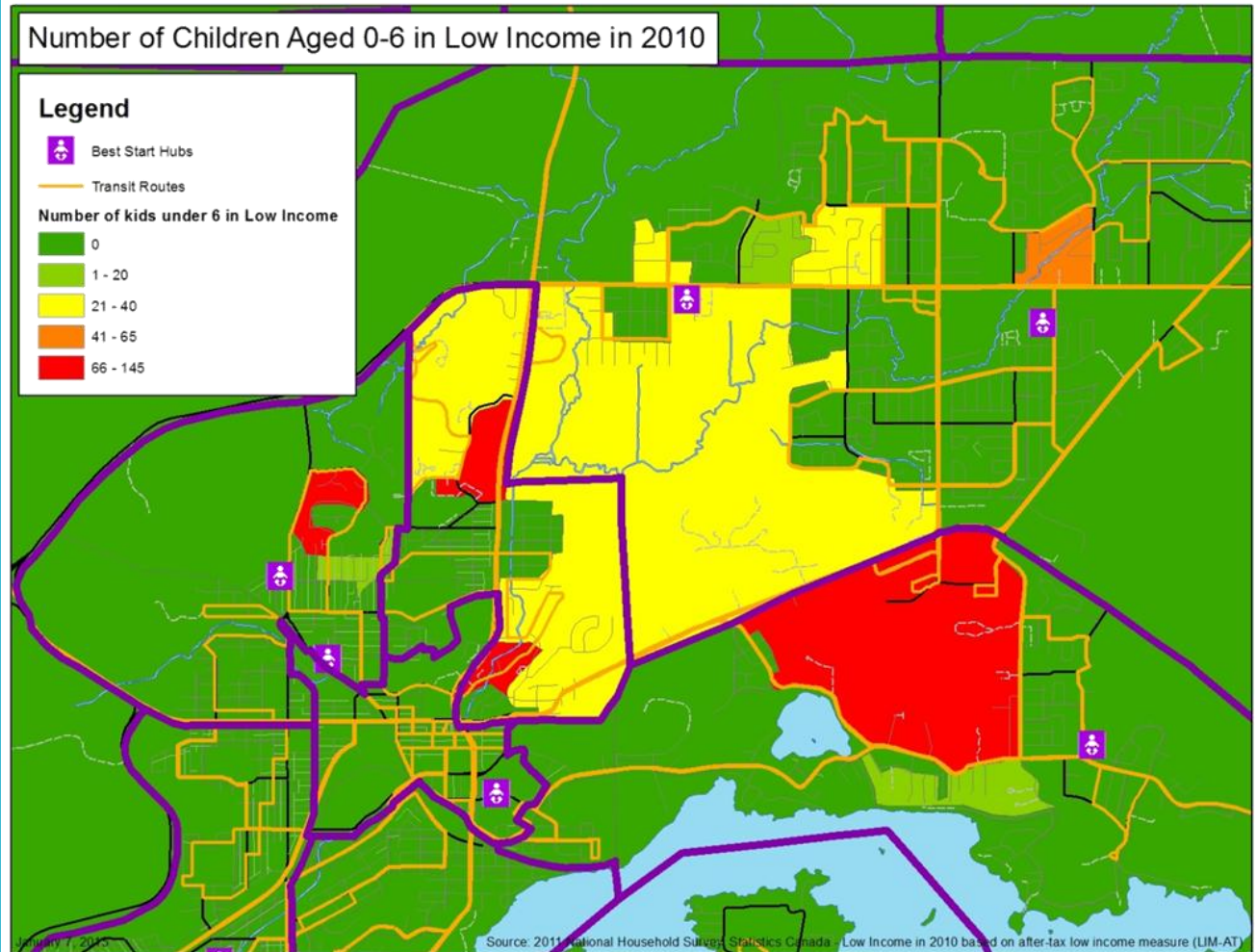
Median Household Income and Dwellings by Period of Construction



Children Services

- Best Start Hubs are free family centres located in schools throughout Greater Sudbury. They offer children and their families a place to meet, to learn and to grow together.
- How can the City strategically place new Best Start Hubs?
- We can use the data collected to plan the location of future Best Start Hubs.

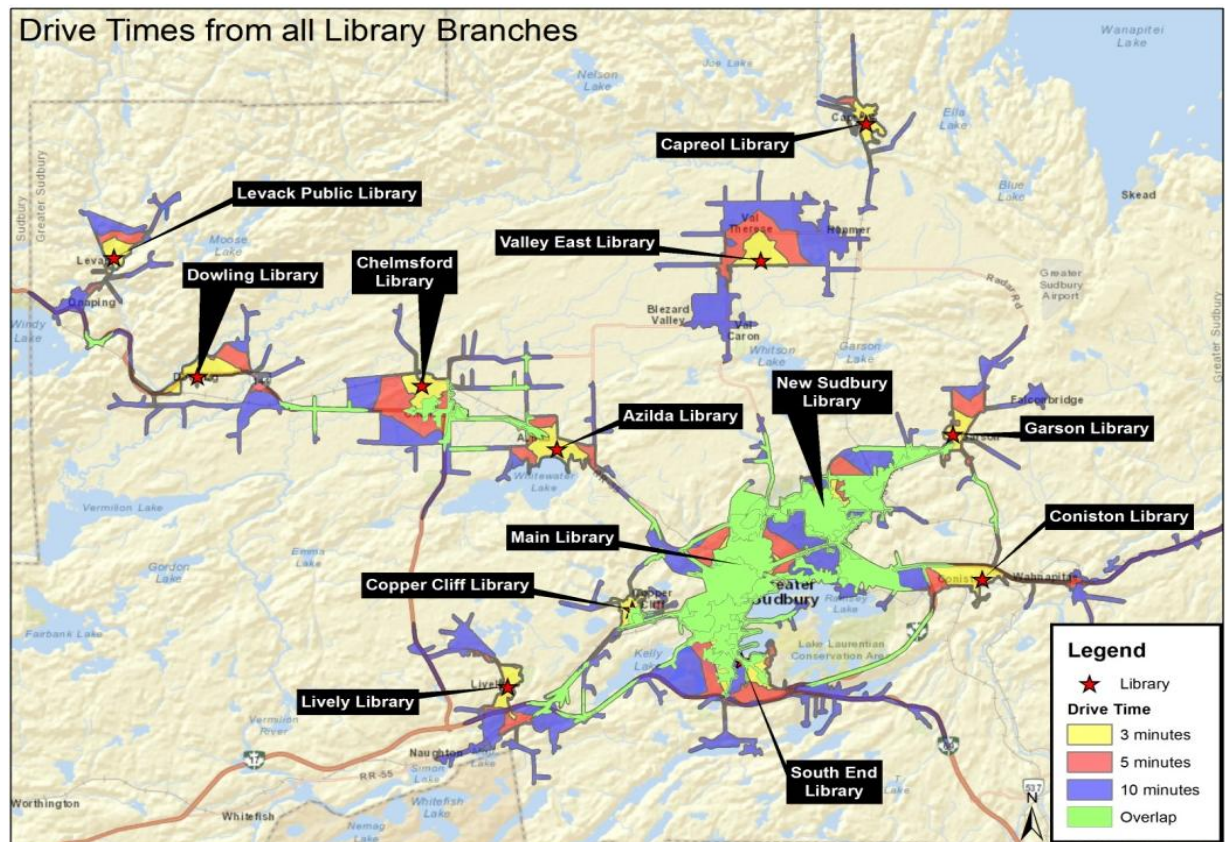
Children Aged 0-6 in Low Income with Best Start Hubs and Transit Routes



Locations shown are not centered on any specific property. They are for general information only.

Library Services

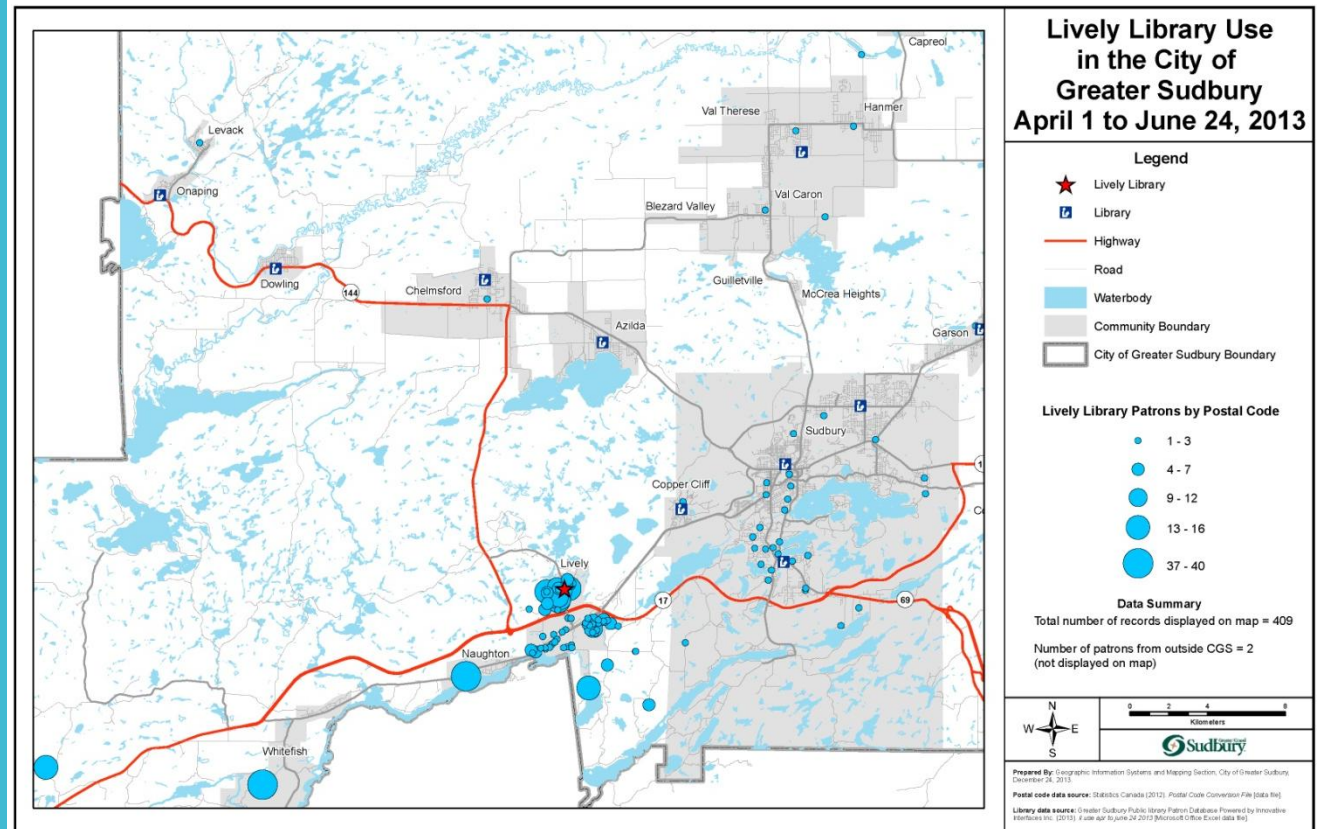
- How can we improve services from library branches? Where should we focus our efforts?
- We can use the data for targeted programming, marketing.



Locations shown are not centered on any specific property. They are for general information only.

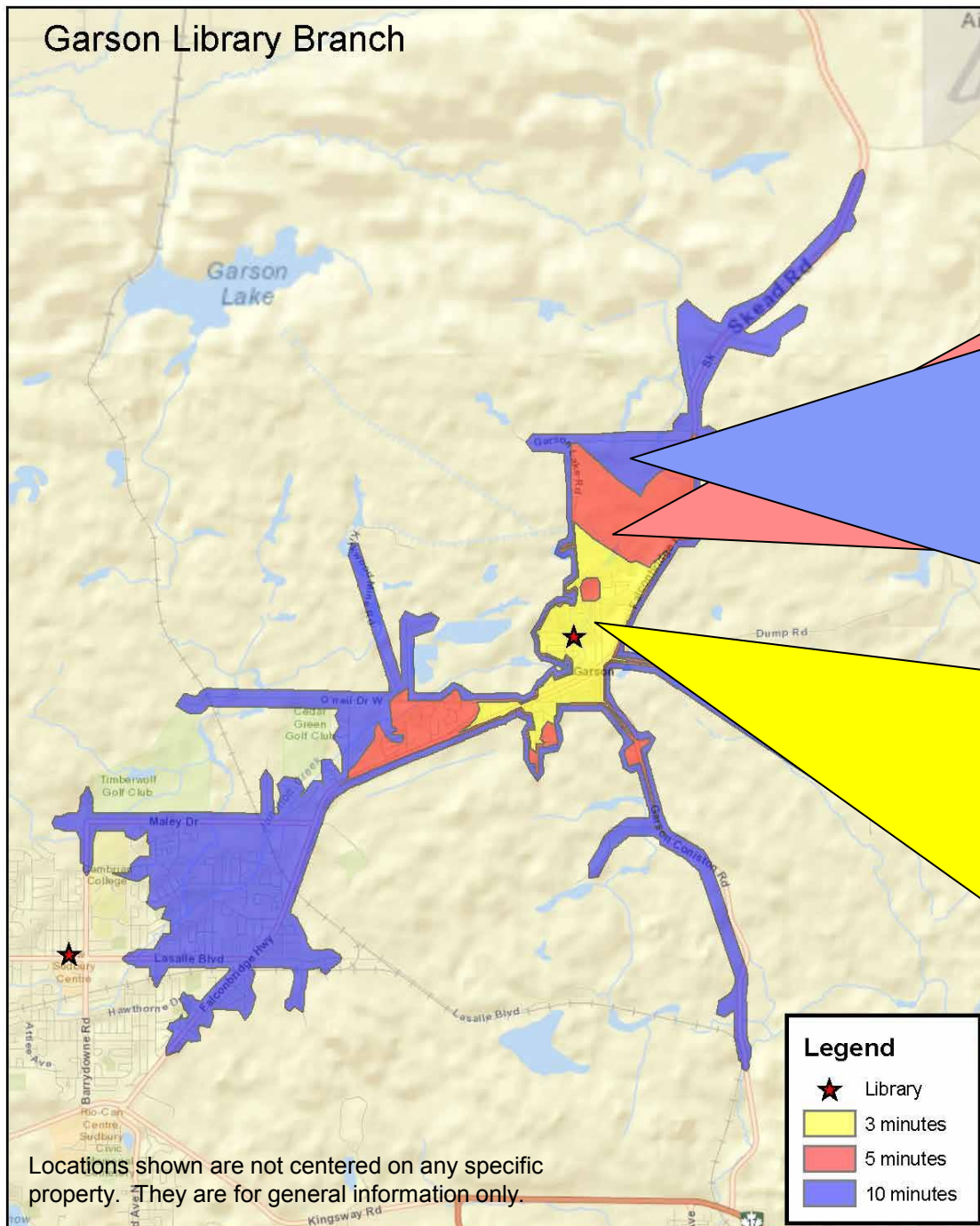
Lively Library Branch activity

- Where are patrons coming from?
- Look at the demographics from those neighbourhoods and customize programming.
- Target areas who are not using the library.



Locations shown are not centered on any specific property. They are for general information only.

Garson Library Branch



Locations shown are not centered on any specific property. They are for general information only.

Legend

- ★ Library
- 3 minutes
- 5 minutes
- 10 minutes

2,813 People
1075 Households

4,041 People

12,132 People

4,522 Households

3,684 Families

Children Aged 0-19: 3,254(27.0%)

0-4: 661 (5.5%)

5-9: 774 (6.4%)

10-14: 918 (7.6%)

15-19: 901 (7.4%)

65+: 1,276 (10.5%)

68.1% participation in Labour Force

Mother Tongue:

70.2% are English

25.5% Francophone

4.3% non-official language

Education:

23.8% have no certificate, diploma or degree

76.2 % have a certificate, diploma or degree

27.1% have only high school

10.7% have trades/apprenticeship

24.7% have college diploma

13.7% have University

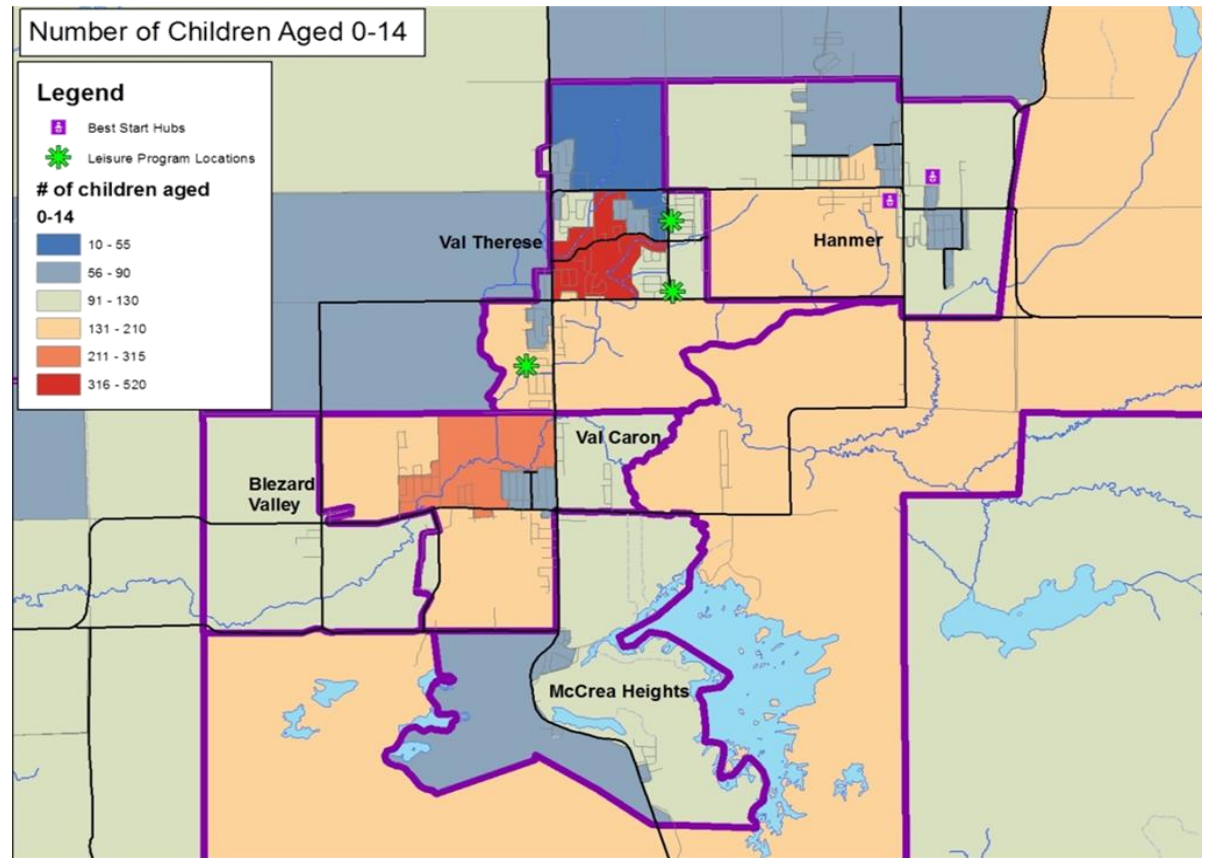
75.3% of people own their home

24.7% rent

\$81,713 Average Household Income

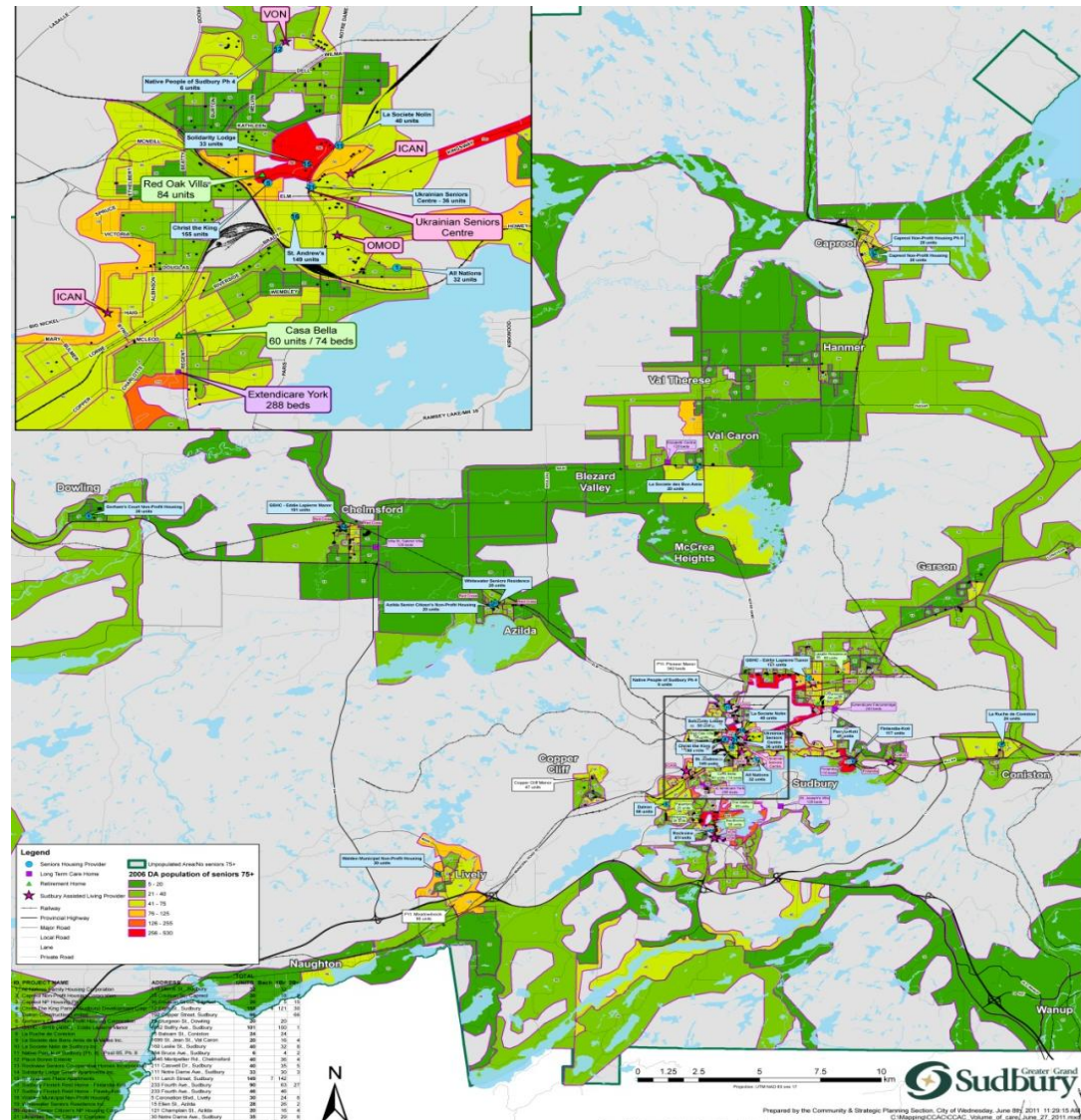
Leisure Services

- Where is the best place to locate playgrounds/recreation facilities?
- Identify gaps in services and make informed decisions on where to try to fill those gaps.



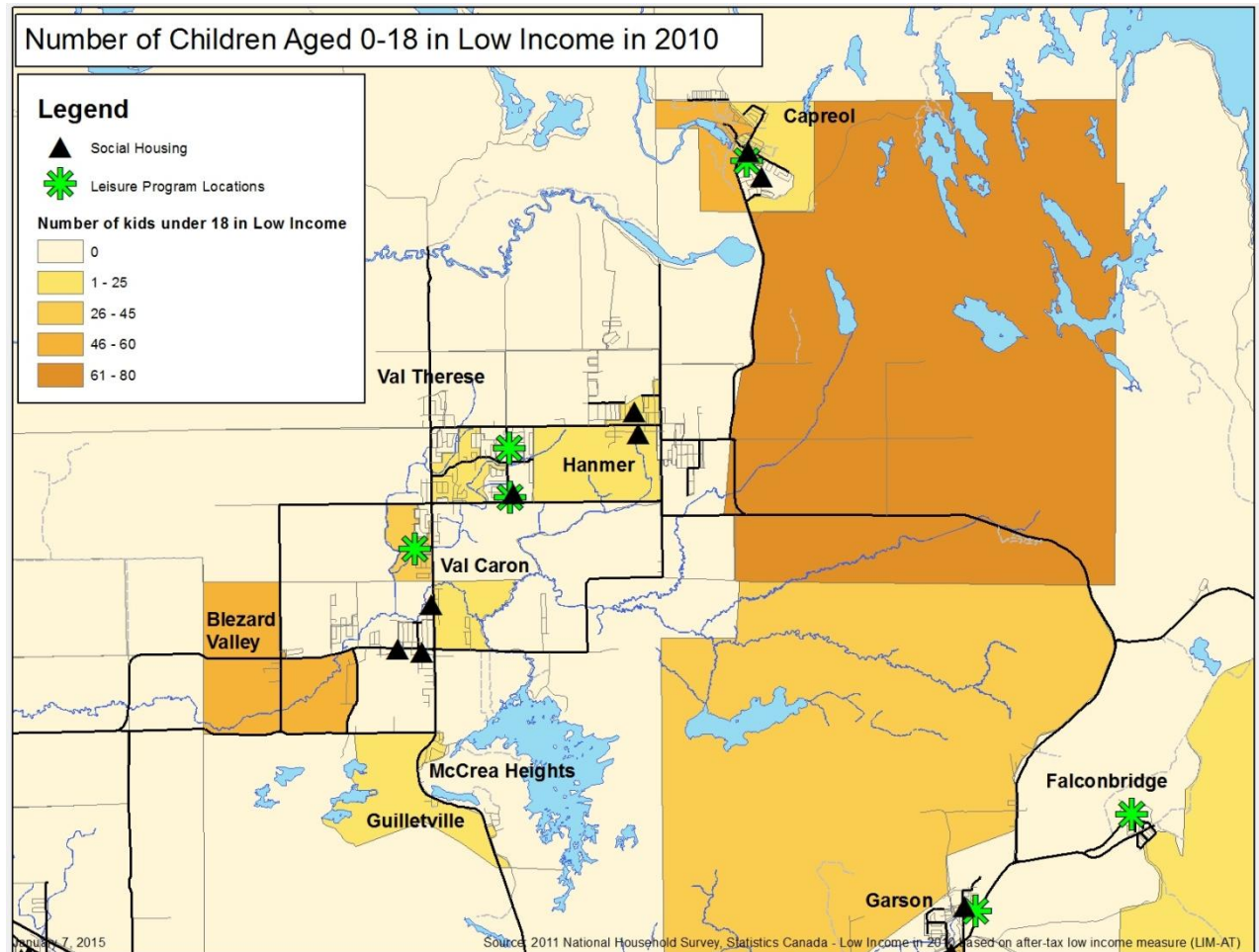
Locations shown are not centered on any specific property. They are for general information only.

Distribution of Seniors aged 75 and up



Locations shown are not centered on any specific property. They are for general information only.

Social Housing Units, Leisure Programs and Number of Children Aged 0-18 in Low Income



Locations shown are not centered on any specific property. They are for general information only.

Other uses

Other

Enhance services for the City's vulnerable areas. What services are available or lacking in the most deprived areas?

Police/EMS/Fire

Map the locations of the calls for service and look at the demographics, assess the municipal facilities in that area. Are there any facilities? Are there enough?

Transit

Change locations of the stops or routes based on demographics (age, income levels, history or transit usage).

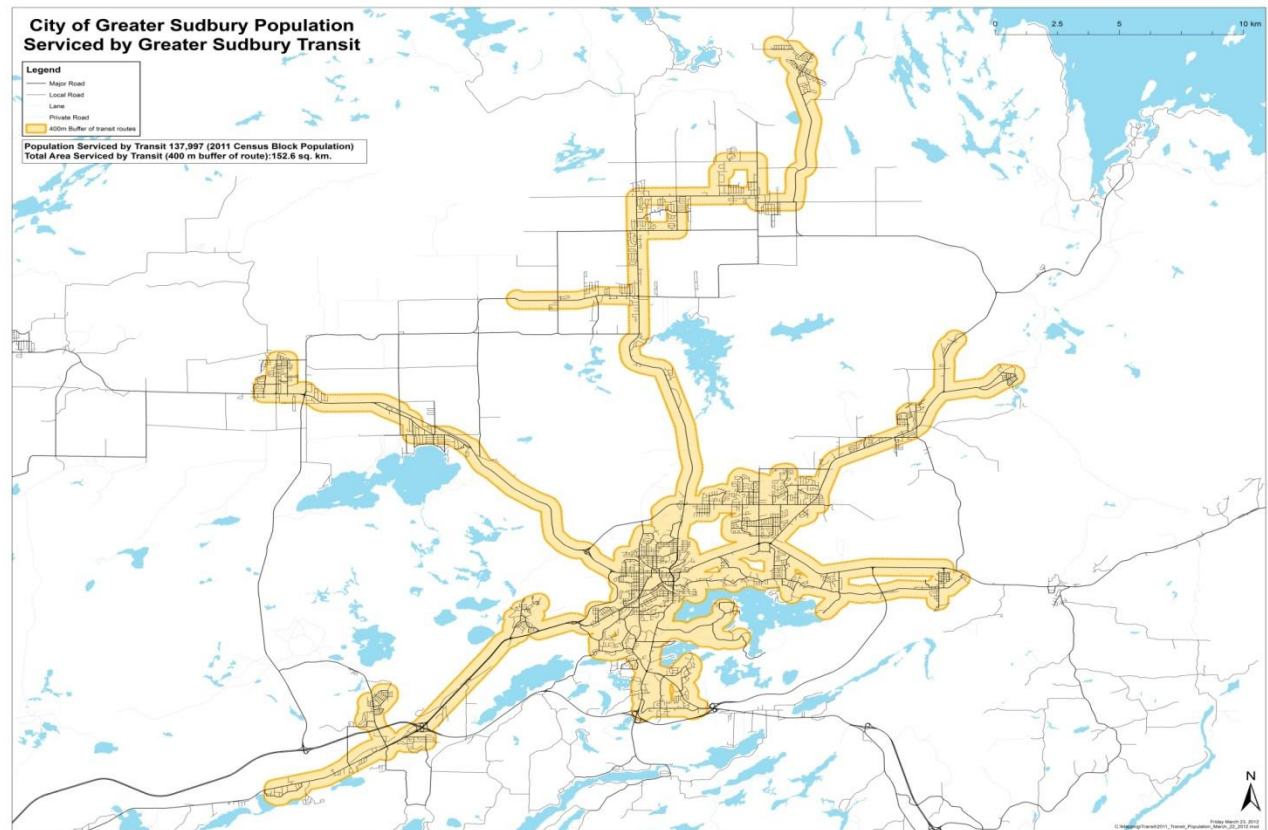
Health Unit/Hospital

Emergency Department (ED) visits – where do people live who are accessing the ED? Is there anything the City can do to help those neighbourhoods? i.e. improve safety, install infrastructure etc...

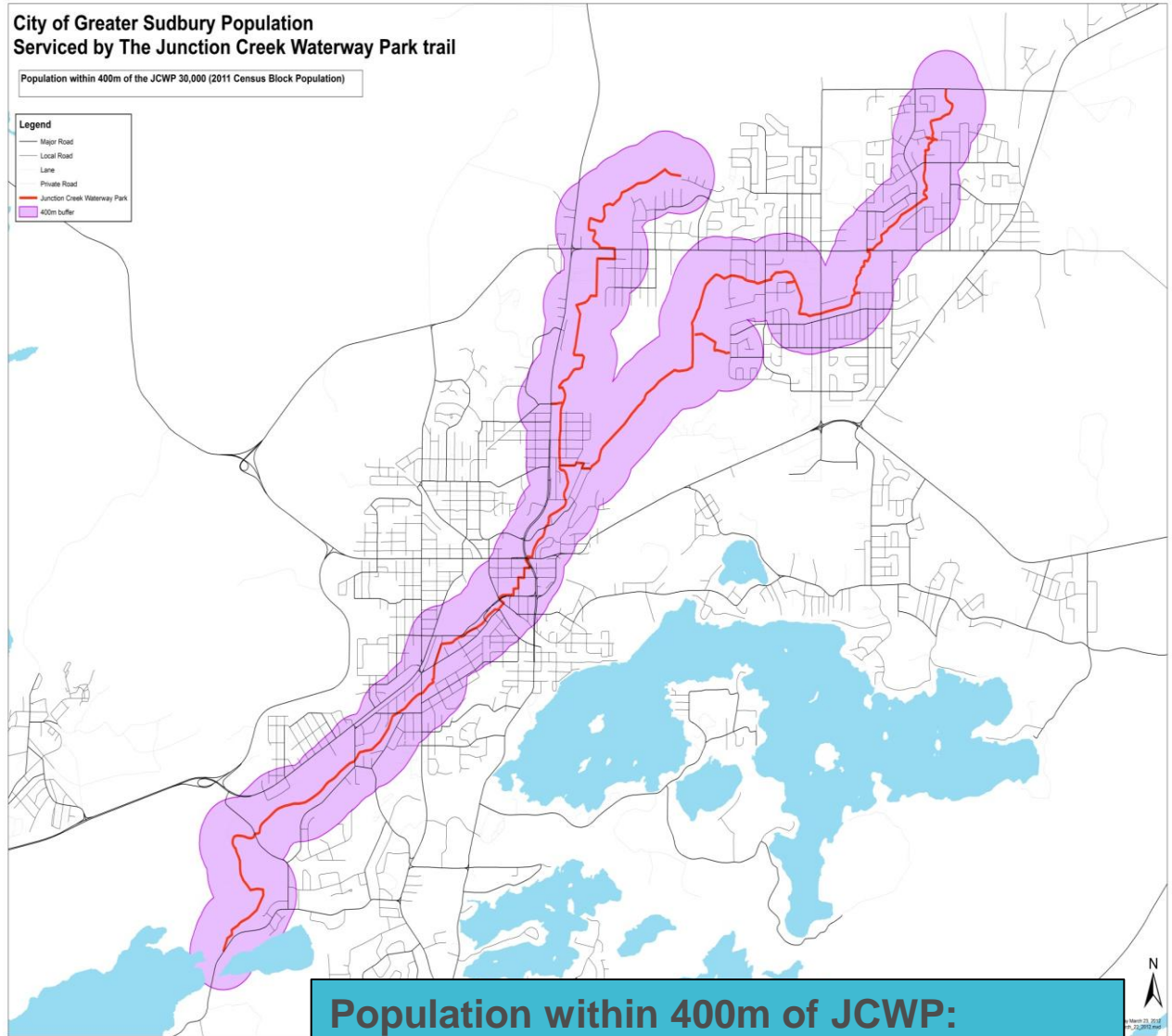
Transit

Population Serviced by Transit:

- 86% or 137,997 (2011 Census Block Population)
- Total Area Serviced by Transit (400m buffer of route): 152.6 sq. km.



Junction Creek



**Population within 400m of JCWP:
30,000 (2011 Census Block Population)**

- We have the ability to do a side-by-side comparison of data for each neighbourhood

Number of Critical Infrastructures by Community/Neighbourhood

Neighbourhood	Day Cares	Food Banks	Food Suppliers	Grocery Stores	Hospitals	Medical Clinic	Medical Imaging	Medical Laboratory	Mental Health Resources	Pharmacy	Police Station	Rehabilitation Centre	Schools	Social Service Facilities	Treatment Centre	Grand Total
Azilda	3			1						1	1		2			8
Bleazard Valley			2										1			3
Capreol	2	2		1						1	1		1			8
Chelmsford	5	1	1	2						4			6			19
Coniston	2	1		1						1	1		2			8
Copper Cliff	1									1	1		1			4
Donovan	3	1	1							1			3	3		12
Dowling	1			1						1			2			5
Downtown	7	18		4		6	1		2	4	2	1	6	18		69
Flour Mill	6	4	2	2		1				1	1		5	2		24
Garson	4	1		2		1				1	1		3	1		14
Hanmer	5	2		1		1				2			6			17
Kingsmount-Bell Park	3	2				2				1			2			10
Levack	1	1				1				1	1		1			6
Lively	4	2		1		2				3	1		4			17
McCrea Heights		1				1										2
Minnow Lake	4	2	2							3			4	4		19
New Sudbury	14	3	6	6		5	1			7	1		15	5		63
Nickel Centre Rural			1													1
Rayside-Balfour Rural			3													3
Rural South End											1		1			2
SE Townships													1			1
South End	12	2		5	2	6	2	1		5	1		11	1	1	49
Val Caron	5		1	1		2				2			6			17
Val Therese	3	1		1						1	1		3			10
Valley East Rural			2													2
Walden Rural	1		1										1			3
West End	4	2	1			4				1			3	4		19
Grand Total	90	45	23	29	2	32	4	1	2	42	14	1	90	38	1	415

Area (ha) of Parks by Community/Neighbourhood

Neighbourhood	Cemetery (ha)	% of total cemeteries	Park (ha)	% of total parks	Playground (ha)	% of total playgrounds	School Park (ha)	% of total school parks	Tot Lot (ha)	% of total tot lots	Total (ha)	% of total	Rank based on total ha	Total ha excl. cemeteries
Azilda		0.0%	30.90	3.3%	0.13	0.1%		0.0%	1.58	3.0%	32.62	2.5%	11	32.6
Blezard Valley	2.18	2.7%	12.48	1.3%	2.83	1.4%		0.0%		0.0%	17.48	1.3%	17	15.3
Capreol	2.56	3.1%	6.59	0.7%		0.0%		0.0%	1.43	2.8%	10.58	0.8%	20	8.0
Chelmsford	0.57	0.7%	0.16	0.0%	5.51	2.8%	1.89	3.7%	1.05	2.0%	9.18	0.7%	23	8.6
Coniston	0.67	0.8%		0.0%		0.0%		0.0%	2.42	4.7%	3.09	0.2%	33	2.4
Copper Cliff		0.0%		0.0%	6.46	3.3%	2.60	5.0%	1.23	2.4%	10.30	0.8%	21	10.3
Donovan		0.0%	37.47	4.0%	3.23	1.6%	2.47	4.8%	0.13	0.2%	43.29	3.3%	8	43.3
Dowling		0.0%		0.0%	4.94	2.5%	5.91	11.5%		0.0%	10.85	0.8%	18	10.8
Downtown		0.0%	1.42	0.1%		0.0%	7.00	13.6%		0.0%	8.41	0.6%	27	8.4
Falconbridge		0.0%	5.76	0.6%		0.0%		0.0%	0.13	0.3%	5.90	0.4%	30	5.9
Flour Mill		0.0%		0.0%	3.37	1.7%	3.45	6.7%	3.12	6.0%	9.94	0.7%	22	9.9
Garson		0.0%	12.24	1.3%	15.34	7.8%		0.0%	0.24	0.5%	27.82	2.1%	12	27.8
Hanmer	0.81	1.0%	21.37	2.3%	5.29	2.7%	7.55	14.6%		0.0%	35.02	2.6%	10	34.2
Kingsmount-Bell Park		0.0%	17.80	1.9%	2.20	1.1%	3.58	6.9%	0.66	1.3%	24.23	1.8%	14	24.2
Levack		0.0%	3.02	0.3%		0.0%		0.0%	5.58	10.7%	8.60	0.6%	26	8.6
Lively	2.72	3.3%	5.70	0.6%	14.33	7.3%		0.0%	1.21	2.3%	23.96	1.8%	15	21.2
McCrea Heights		0.0%	3.98	0.4%	1.58	0.8%		0.0%	1.13	2.2%	6.68	0.5%	29	6.7
Minnow Lake	20.82	25.5%	171.88	18.1%	13.94	7.1%	2.73	5.3%	4.87	9.4%	214.24	16.1%	2	193.4
Naughton		0.0%	77.15	8.1%	13.00	6.6%		0.0%		0.0%	90.15	6.8%	4	90.2
NE Townships		0.0%	0.03	0.0%		0.0%		0.0%		0.0%	0.03	0.0%	34	0.0
New Sudbury	18.43	22.6%	115.02	12.1%	29.09	14.8%	10.56	20.5%	2.14	4.1%	175.25	13.2%	3	156.8
Nickel Centre Rural	2.73	3.3%	2.46	0.3%	3.30	1.7%		0.0%	0.14	0.3%	8.63	0.6%	25	5.9
Onaping		0.0%		0.0%		0.0%		0.0%	3.20	6.2%	3.20	0.2%	32	3.2
Onaping Falls Rural	0.84	1.0%	61.81	6.5%		0.0%		0.0%	4.00	7.7%	66.66	5.0%	6	65.8
Rayside-Balfour Rural	6.12	7.5%		0.0%	2.21	1.1%		0.0%	0.65	1.2%	8.98	0.7%	24	2.9
Rural South End		0.0%	1.41	0.1%	3.48	1.8%	2.51	4.9%		0.0%	7.41	0.6%	28	7.4
South End	0.52	0.6%	56.22	5.9%	12.65	6.5%	2.23	4.3%	1.54	3.0%	73.15	5.5%	5	72.6
Val Caron		0.0%	0.62	0.1%	20.39	10.4%		0.0%	2.28	4.4%	23.29	1.7%	16	23.3
Val Therese		0.0%	41.26	4.4%	8.16	4.2%		0.0%	2.39	4.6%	51.81	3.9%	7	51.8
Valley East Rural	4.02	4.9%	22.32	2.4%	0.84	0.4%		0.0%		0.0%	27.18	2.0%	13	23.2
Wahnapitae		0.0%		0.0%	1.66	0.8%		0.0%	2.06	4.0%	3.72	0.3%	31	3.7
Walden Rural	10.01	12.3%	225.54	23.8%	4.14	2.1%		0.0%	3.33	6.4%	243.02	18.3%	1	233.0
West End	8.54	10.5%	3.18	0.3%	16.66	8.5%	1.84	3.6%	5.46	10.5%	35.68	2.7%	9	27.1
Whitefish		0.0%	9.54	1.0%	1.25	0.6%		0.0%		0.0%	10.79	0.8%	19	10.8
Grand Total	81.54		947.32		195.97		51.59		52.00		1,331.14			1249.6

Parks by Community/Neighbourhood

Number of Parks by Community/Neighbourhood

Neighbourhood	Cemetery	Park	Playground	School Park	Tot Lot	Grand Total
Azilda		4	1		2	7
Blezard Valley	1	1	1			3
Capreol	1	4			2	7
Chelmsford	1	1	5	1	8	16
Coniston	1				2	3
Copper Cliff			3	1	1	5
Donovan		4	5	1	1	11
Dowling			1	2		3
Downtown		2		1		3
Falconbridge		1			1	2
Flour Mill			3	1	3	7
Garson		8	2		1	11
Hanmer	1	2	3	1		7
Kingsmount-Bell Park		2	1	3	2	8
Levack		2			4	6
Lively	1	1	5		2	9
McCrea Heights		1	1		1	3
Minnow Lake	1	5	8	2	4	20
Naughton		3	1			4
NE Townships		1				1
New Sudbury	1	7	15	2	5	30
Nickel Centre Rural	4	1	4		1	10
Onaping					4	4
Onaping Falls Rural	1	2			2	5
Rayside-Balfour Rural	1		1		1	3
Rural South End		2	2	1		5
South End	1	13	7	1	5	27
Val Caron		2	1		2	5
Val Therese		3	5		4	12
Valley East Rural	1	2	1			4
Wahnapiatae			1		2	3
Walden Rural	5	7	3		1	16
West End	2	3	3	1	6	15
Whitefish		1	1			2
Grand Total	23	85	84	18	67	277

- Recreation facilities by Neighbourhood/Community

Number of Recreation Facilities by Community/Neighbourhood

Neighbourhood	Accessible Park	Arena	Ball Diamond Major	Ball Diamond Minor	Basketball Court	Beach	Best Start Hub	BMX	Boat Launch	Citizen Service Centre/Library	Museum	Outdoor Rink	Pool	Skateboard Park	Ski Hill	Soccer Field Major	Soccer Field Minor	Splash Pad	Tennis Courts	Track	Youth Centre	Grand Total
Azilda		1	3		1	1			1	1	1	1		1			1			1		13
Bleazard Valley			2		1							1										4
Capreol	1	1	2		1	1				1	1	1		1	1	1			4	1	1	18
Chelmsford		1	1		3		2			1		1		1			2	1	3	1	1	18
Coniston		1	1						1	1		1				1			4			9
Copper Cliff		1		2			1			1	1	1	1						1			9
Donovan			5	2			2					4							3		1	17
Dowling			2		1				2	1		1				1			3	1	1	11
Downtown		1					1			1	1					3		1	4		1	13
Falconbridge					4							1				2		1				8
Flour Mill		1			2						1	3					2	1	2			12
Garson	2	1	4		4		1			1		1		1		1			2			18
Hanmer	1	1	5		1		2					2		1		3			1		1	18
Kingsmount-Bell Park	1					3					1	1										6
Levack		1	1									1							3			6
Lively		1	1		4					1	1	4		1	1	3	1	1	4		1	24
McCrea Heights									1													1
Minnow Lake		1	3	1	1	2	1					5		1		2	2		2			21
Naughton			2			1			1			1				1						6
NE Townships									1													1
New Sudbury	3		1	3	7		2	1		1		8	1		1	4	9	2	4	1		48
Nickel Centre Rural			1		2							3							1			7
Onaping										1		1	1	1					2		1	7
Onaping Falls Rural					2																	2
Rural South End			1			1						2				1						5
Rural Sudbury			1																			1
South End	2	1	1		1	2	2		1	1		2				5	5		6	2		31
Val Caron		1	1													2			4	1		9
Val Therese	1		1		3					1		3	1			11		1	2			24
Valley East Rural						2			2			1										5
Wahnapitae			1		1				1			1							1			5
Walden Rural			1		2	2			3			3					1		3			15
West End	1				2		1					2	1	1		2			5	2		17
Whitefish												1										1
Grand Total	12	14	41	8	43	15	15	1	11	13	7	57	5	9	3	43	23	7	65	10	8	410

- Custom geography data for each of our neighbourhoods (2011 Census data available via the Sudbury Data Consortium)
- There are over **3,800** variables from the 2011 Census & NHS

Geography	CGS	Azilada	Bleazard Valley	Capreol	Chelmsford	Coniston	Copper Cliff	Donovan	Dowling	Downtown	Falconbridge	Flour Mill	Garson	Hanmer	Kingsmount-Bell Park	Levack	Lively
Total number of persons aged 65 years and over in private households	23,835	565	65	535	1,005	360	390	850	305	730	100	880	605	655	745	220	825
Number of persons not in census families aged 65 years and over	7,990	140	10	185	315	110	140	350	70	510	20	445	180	205	270	80	240
Living with relatives	800	25	5	10	35	15	10	30	10	10	0	35	40	30	30	10	15
Living with non-relatives only	440	15	5	5	25	0	5	25	5	15	0	25	15	10	10	5	5
Living alone	6,795	105	10	165	260	100	130	290	60	480	25	385	125	165	225	70	220
Number of census family persons aged 65 years and over	15,830	425	55	350	690	245	245	500	230	225	75	435	430	455	470	140	580
Total number of males aged 65 years and over in private households	10,720	280	35	240	460	150	170	370	150	260	50	385	285	295	325	100	380
Number of males not in census families aged 65 years and over	2,240	50	5	55	80	30	40	110	25	145	5	155	60	45	80	20	65
Living with relatives	185	5	0	5	10	5	5	5	5	5	0	10	10	0	5	5	5
Living with non-relatives only	225	5	0	5	10	5	0	15	0	15	0	20	10	5	5	5	0
Living alone	1,830	40	0	50	55	20	35	90	15	130	5	125	40	40	65	20	60
Number of census family males aged 65 years and over	8,470	230	30	185	380	125	125	260	125	115	45	225	225	245	250	80	315
Total number of females aged 65 years and over in private households	13,135	290	35	295	545	205	220	480	155	470	50	495	320	365	415	115	440
Number of females not in census families aged 65 years and over	5,765	90	5	130	230	85	100	235	50	360	20	290	120	155	195	55	180
Living with relatives	605	15	0	10	25	5	10	25	0	5	0	25	30	30	25	5	10
Living with non-relatives only	220	5	0	0	10	5	5	10	0	5	0	5	5	5	5	0	5
Living alone	4,925	70	0	120	200	75	90	200	40	345	20	260	85	125	160	50	160
Number of census family females aged 65 years and over	7,345	195	25	160	315	120	115	240	105	110	35	205	200	205	220	65	265
Total number of census families in private households by family size	46,840	1,355	205	1,020	2,195	665	750	1,555	545	460	200	1,755	1,945	1,810	1,305	440	1,910
Size of census family: 2 persons	24,940	730	100	560	1,170	335	395	950	265	370	90	1,075	870	830	795	265	915
Size of census family: 3 persons	10,240	290	50	240	490	165	165	340	130	55	50	425	480	420	260	90	420
Size of census family: 4 persons	8,850	270	45	155	405	120	130	205	115	30	45	185	460	400	195	60	460
Size of census family: 5 or more persons	2,850	70	20	70	130	45	65	60	35	10	20	65	135	160	60	30	115
Total number of census families in private households by family structure and number of children	46,860	1,355	210	1,020	2,195	665	750	1,555	545	460	200	1,755	1,950	1,810	1,305	440	1,915
Total couple families by family structure and number of children	39,000	1,185	180	835	1,830	570	600	1,150	490	350	180	1,130	1,645	1,545	1,095	375	1,680
Married couples	31,450	980	150	650	1,455	475	445	735	405	225	140	700	1,365	1,295	825	285	1,460
Without children at home	15,780	515	70	345	795	230	220	420	195	170	60	425	560	560	435	175	650
With children at home	15,635	465	85	300	660	245	225	310	215	50	75	270	795	735	385	110	805
1 child	6,365	195	30	145	275	120	85	160	85	35	30	140	305	275	175	50	290
2 children	7,030	210	35	110	290	100	85	115	100	10	30	95	385	330	165	40	410
3 or more children	2,230	55	20	45	90	30	55	35	25	10	10	30	110	130	45	20	110
Common-law couples	7,545	205	25	185	375	100	155	415	85	130	35	435	285	250	270	85	220
Without children at home	4,150	110	10	85	160	45	80	270	35	100	15	265	135	115	205	40	115
With children at home	3,400	95	15	100	215	55	75	150	45	30	25	170	155	135	65	40	110
1 child	1,685	45	10	50	100	25	35	70	25	20	10	95	80	60	35	25	55
2 children	1,255	45	5	35	85	15	30	55	15	10	5	55	50	55	25	15	45
3 or more children	475	10	0	20	30	10	10	20	5	5	5	25	20	25	5	5	10
Total lone-parent families by sex of parent and number of children	7,845	170	30	185	365	90	150	405	55	105	20	620	295	270	210	65	235
Female parent	6,115	130	20	140	280	75	125	325	35	80	20	520	240	200	170	45	180
1 child	3,755	75	15	95	150	55	75	200	20	65	10	315	145	110	120	30	105
2 children	1,805	40	5	30	105	15	35	85	10	5	5	170	80	60	35	15	65
3 or more children	570	15	5	20	25	5	15	35	0	0	0	40	25	20	15	5	10
Male parent	1,740	40	5	45	80	20	25	85	20	30	5	100	55	70	40	20	50
1 child	1,245	30	5	35	60	15	20	55	10	25	5	70	35	50	30	10	40
2 children	370	10	0	10	10	5	5	20	5	0	5	25	15	15	10	5	10
3 or more children	115	0	0	5	5	0	5	5	0	5	0	5	10	5	0	5	0
Total children in census families in private households	44,960	1,220	230	955	2,080	640	775	1,370	525	240	215	1,630	2,125	2,000	1,060	365	1,950
Under six years of age	9,580	280	55	185	445	120	165	355	120	60	50	490	485	430	270	75	415
6 to 14 years	15,185	400	80	315	710	225	280	420	195	60	70	535	780	705	335	130	710

- Custom geography data for each of our neighbourhoods (2011 National Household Survey data via the Sudbury Data Consortium)

Geography	CGS	Azilada	Bleazard Valley	Capreol	Chelmsford	Coniston	Copper Cliff	Donovan	Dowling	Downtown	Falconbridge	Flour Mill	Garson	Hanmer	Kingsmount-Bell Park	Levack	Lively	McCrea Heights	Minnow Lake	Naughton	New Sudbury
Detailed Mother Tongue - Total population excluding institutional residents	158,625	4,295	695	3,275	7,110	2,145	2,600	6,005	1,715	2,640	680	6,815	6,380	5,940	4,680	1,405	6,365	1,260	11,270	755	23,490
Single responses	155,365	4,190	685	3,220	6,985	2,110	2,570	5,860	1,695	2,570	670	6,645	6,265	5,790	4,595	1,380	6,290	1,230	10,995	745	22,945
English	102,270	1,920	315	2,560	2,855	1,415	2,155	4,070	1,145	1,550	575	4,105	4,690	2,905	3,495	1,160	5,455	690	7,670	670	14,810
French	42,785	2,170	350	585	4,045	600	280	1,195	480	760	65	2,145	1,400	2,805	590	180	505	520	2,690	50	6,545
Non-official languages	10,280	95	15	70	85	90	135	590	70	255	25	400	180	85	510	45	335	20	635	30	1,585
Selected Aboriginal languages	250	0	0	5	0	0	0	35	0	10	0	55	10	5	5	0	5	0	20	0	45
Atikamekw	0	0	0	0	0	0	0	0	0	0	0	0	0	0	0	0	0	0	0	0	0
Cree, n.o.s.	70	0	0	0	0	0	0	5	0	5	0	15	5	0	0	0	0	0	10	0	15
Dene	0	0	0	0	0	0	0	0	0	0	0	0	0	0	0	0	0	0	0	0	0
Innu/Montagnais	0	0	0	0	0	0	0	0	0	0	0	0	0	0	0	0	0	0	0	0	0
Inuktitut	5	0	0	0	5	0	0	0	0	0	0	0	0	0	0	0	0	0	0	0	0
Mikmaq	0	0	0	0	0	0	0	0	0	0	0	0	0	0	0	0	0	0	0	0	0
Ojibway	180	0	0	0	0	0	0	30	0	10	0	40	5	5	5	0	5	0	5	0	35
Oji-Cree	5	0	0	0	0	0	0	0	0	0	0	0	0	0	0	0	0	0	0	0	0
Stoney	0	0	0	0	0	0	0	0	0	0	0	0	0	0	0	0	0	0	0	0	0
Selected non-Aboriginal languages	9,945	100	20	70	80	95	135	550	70	235	25	335	170	75	500	40	325	20	605	30	1,535
African languages, n.i.e.	20	0	0	0	0	0	0	0	0	0	0	0	0	0	5	0	0	0	0	0	5
Afrikaans	15	0	0	0	0	0	0	0	5	0	0	0	0	5	0	0	5	0	0	0	0
Akan (Twi)	10	0	0	0	0	0	0	0	0	0	0	0	0	0	5	0	0	0	5	0	0
Albanian	0	0	0	0	0	0	0	0	0	0	0	0	0	0	0	0	0	0	0	0	0
Amharic	5	0	0	0	0	0	0	0	0	0	0	0	0	0	0	0	0	0	0	0	5
Arabic	415	0	0	5	0	0	5	15	0	25	0	30	5	0	35	0	0	0	20	0	70
Armenian	10	0	0	0	0	0	0	0	0	0	0	0	5	0	0	0	0	0	0	0	0
Bantu languages, n.i.e.	35	0	0	0	0	0	0	5	0	0	0	10	0	0	5	0	0	0	0	0	0
Bengali	20	0	0	0	0	0	0	0	0	0	0	5	0	0	0	0	0	0	0	0	0
Berber languages (Kabyle)	5	0	0	0	0	0	0	0	0	0	0	5	0	0	0	0	0	0	0	0	0
Bisayan languages	10	0	0	0	0	0	0	0	0	5	0	0	0	0	0	0	0	0	0	0	0
Bosnian	5	0	0	0	0	0	0	0	0	0	0	0	0	0	0	0	0	0	0	0	5
Bulgarian	20	0	0	0	0	0	0	0	0	0	0	0	0	0	5	0	0	0	0	0	10
Burmese	0	0	0	0	0	0	0	0	0	0	0	0	0	0	0	0	0	0	0	0	0
Cantonese	150	0	0	0	5	0	0	5	0	5	0	15	10	0	10	0	0	0	5	0	25
Chinese, n.o.s.	260	0	0	0	0	0	0	25	0	0	0	5	0	0	30	10	0	0	15	0	55
Creoles	15	0	0	0	0	0	0	0	0	0	0	0	0	0	0	0	0	0	5	0	5
Croatian	285	0	0	5	0	0	0	35	5	10	0	0	10	0	10	0	5	0	25	0	65
Czech	70	0	0	0	0	5	0	0	5	0	0	0	0	0	5	0	5	0	0	0	10
Danish	20	0	0	0	0	0	0	0	0	0	0	0	0	0	0	0	0	0	0	0	5
Dutch	155	5	0	0	0	5	5	0	5	0	0	5	0	10	5	0	10	0	10	0	15
Estonian	30	0	0	0	0	0	0	0	0	0	0	0	0	0	0	0	5	0	0	0	10
Finnish	1,420	20	0	5	5	0	25	60	30	15	15	15	15	5	40	10	130	0	45	5	110
Flemish	5	0	0	0	0	0	0	0	0	0	0	0	0	0	0	0	0	0	0	0	0
Fukien	0	0	0	0	0	0	0	0	0	0	0	0	0	0	0	0	0	0	0	0	0
German	775	10	0	10	10	0	10	25	10	10	0	20	20	20	25	5	45	5	50	10	140
Greek	145	0	0	0	0	0	10	0	0	0	0	0	10	0	10	0	0	0	10	5	45
Gujarati	90	0	0	0	0	0	0	0	0	15	0	0	0	0	5	0	0	0	10	0	15
Hakka	0	0	0	0	0	0	0	0	0	0	0	0	0	0	0	0	0	0	0	0	0
Hebrew	0	0	0	0	0	0	0	0	0	0	0	0	0	0	0	0	0	0	0	0	0
Hindi	75	0	0	0	0	0	0	5	0	5	0	5	0	0	0	0	0	0	0	0	5
Hungarian	110	5	0	5	0	0	5	0	0	5	0	5	0	0	5	0	0	0	0	0	25

Next Steps

- Assist/train staff in enhancing their databases
- Get the data into a 'fluid' website
- Complete an analysis of gaps in service delivery
- Inform decision making
- Add profiles to the City's website – Feb. 16, 2015





Thank you

