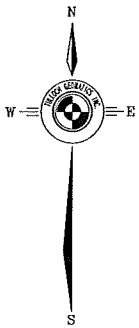
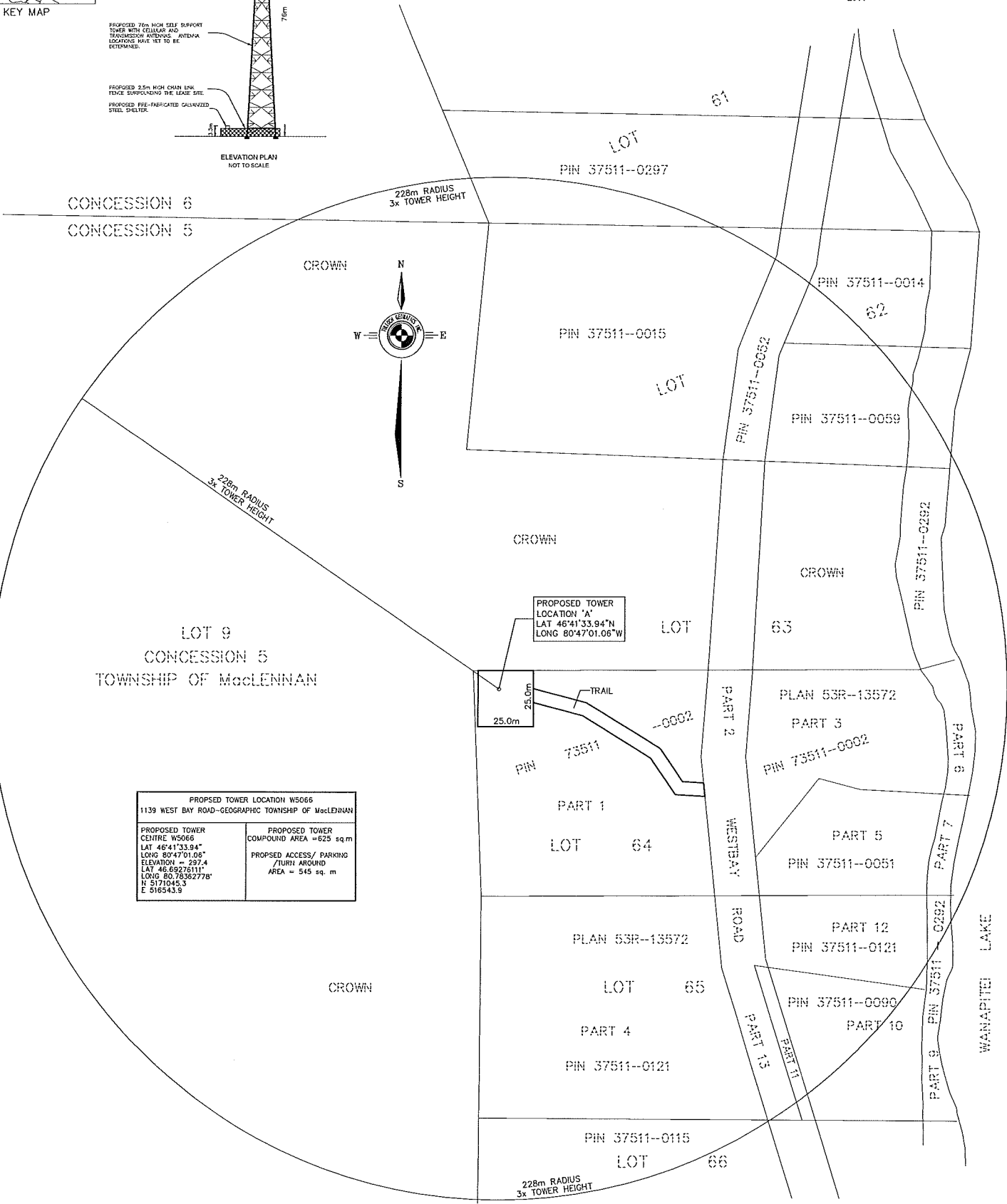
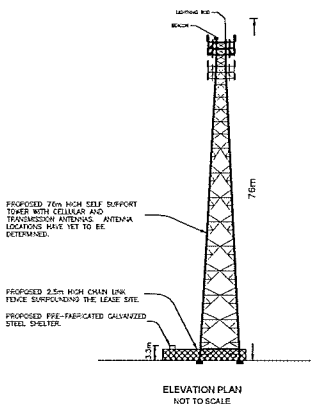
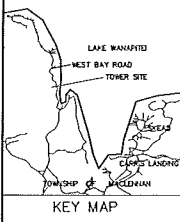
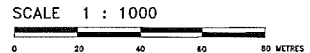


SKETCH OF PROPOSED TOWER LOCATION W5066 SKEAD
 ON
 PART 1, PLAN 53R-13572
 LOT 64, REG'D PLAN M-137
 GEOGRAPHIC TOWNSHIP OF MacLENNAN
 CITY OF GREATER SUDBURY
 DISTRICT OF SUDBURY
 TERRY DEL BOSCO, O.L.S.
 2014



PROPOSED TOWER LOCATION 'A'
 LAT 46°41'33.94"N
 LONG 80°47'01.06"W

PROPOSED TOWER LOCATION W5066 1139 WEST BAY ROAD-GEOGRAPHIC TOWNSHIP OF MacLENNAN	
PROPOSED TOWER CENTRE W5066 LAT 46°41'33.94" LONG 80°47'01.06" ELEVATION = 297.4 LAT 46.69275111° LONG 80.78362778° UTM 18QUD45.3 E 516543.9	PROPOSED TOWER COMPOUND AREA = 625 sq.m PROPOSED ACCESS/ PARKING /TURN AROUND AREA = 545 sq. m



TULLOCH
 1942 REGENT STREET SUDBURY, ONTARIO
 UNIT L P3E 5V5 705-671-2295
 FILE 145688 FW JULY 24 2014

NOTE
 DISTANCES SHOWN HEREON ARE IN METERS AND CAN BE CONVERTED TO FEET BY DIVIDING BY 0.3048.