
The logo for the Climate Risk Institute. The words "CLIMATE", "RISK", and "INSTITUTE" are stacked vertically in a bold, sans-serif font. A vertical line runs through the center of the text, with a red arrowhead pointing upwards at the top of the word "CLIMATE". The line has a color gradient, transitioning from red at the top to green at the bottom.

CLIMATE RISK INSTITUTE

Presentation to Greater Sudbury City Council

November 26, 2019

Allan G. Douglas
President

Why I Am Here?

Introduce the Climate Risk Institute to City Council

Reference the need for climate change planning

Highlight how Climate Risk Institute can help CGS

Context

- Native Sudburian – born, raised, educated, employed (and don't intend to leave)
- Laurentian University 1989-1993 – BSc. Honours, Biochemistry
- Laurentian University employment - 1991-1994 summers
- Laurentian University employment 1995-2001
- Laurentian University 1997-2001 – MBA
- MIRARCO employment – 2002-2019
- Adjunct Professor – School of the Environment – 2016
- **Climate Risk Institute – June 2019**



Canadian Climate Impacts and Adaptation Research Network
Réseau canadien de recherche sur les impacts climatiques et l'adaptation

2001-2007

Gunn

McCreath

Pearson

Spiers

Beckett

Sutcliffe

Bamberger

Courtin

Network cessation in 2007 leads to name change and transformation

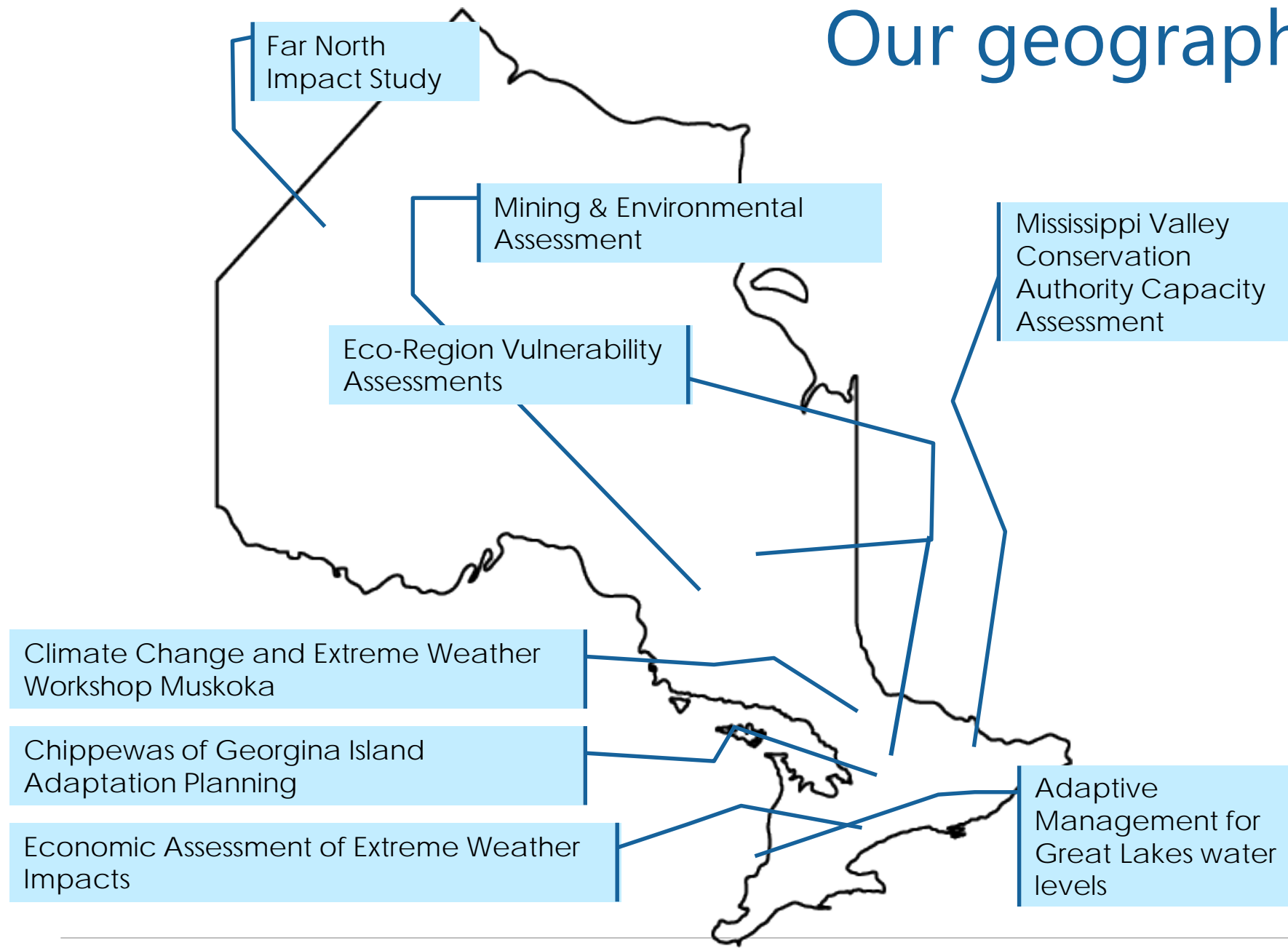


2007-2019



2019...

Our geographic scope



Provincial-scale:

- Regional Adaptation Collaboratives
- Ontario Climate and **Agricultural Assessment Framework**
- Practitioner's Guide to **Ecosystem Adaptation**
- Building climate capacity with **First Nations**

National-scale:

- Adaptation Canada 2016 **National Symposium**
- **CEAA** research and case studies for EAs
- **Arctic Parks** Vulnerability Assessments
- Adaptation policy drivers and barriers in **Alberta energy sector**
- Monitoring and evaluation Analogues
- Co-benefits of **Energy Sector** Adaptation and Mitigation
- Adaptation case studies for **City of Edmonton**

Our Funders and Partners

Canada



Natural Resources
Canada

Ressources naturelles
Canada

Canada

Ontario

Ontario

Ministry of Natural Resources and Forestry

Ontario

Ministry of the Environment
and Climate Change

Ontario

Ministry of Agriculture,
Food and Rural Affairs

Yukon
Government

Laurentian University
Université Laurentienne

The City of
BARRIE

YORK
UNIVERSITY

RSI

IBC BAC
1964 50 2014

Ontario First Nations
Technical Services
Corporation

ZIZZO
ALLAN
DEMARCO

ESSA

Great Lakes and St. Lawrence Cities Initiative
Alliance des villes des Grands Lacs et du Saint-Laurent



Indigenous and
Northern Affairs Canada

Affaires autochtones
et du Nord Canada



Lake Simcoe Region
conservation authority



ICLEI
Local
Governments
for Sustainability



Canadian Council
of Forest
Ministers

Conseil canadien
des ministres
de forêts



Fraser Basin Council

the PEMBINA
institute
Sustainable Energy Solutions

GREEN ANALYTICS

UQAT

UNIVERSITÉ DU QUÉBEC
EN ABITIBI-TÉMISCAMINGUE

SFU

SIMON FRASER UNIVERSITY
THINKING OF THE WORLD



ONTARIO
CLIMATE CONSORTIUM



Climate Change Tools



CLIMATE
RISK
INSTITUTE



[About](#) ▾ [Services](#) ▾ [Sectors](#) ▾ [Events](#) [Contact](#) [Careers](#)

Daniel Krewski, PhD, MHA

Chief Risk Scientist, CEO

Daniel Krewski is a co-founder of Risk Sciences International, formed in 2006, and serves as Chief Risk Scientist and Chief Executive Officer.



LaurentianUniversity
Université **Laurentienne**

CLIMATE
RISK
INSTITUTE



Director

The Director of the Centre is Dr. Daniel Krewski.



uOttawa

Mandate



The Climate Risk Institute provides domestic and international stakeholders, decision-makers and governments with the climate services they require to build resilience to extreme weather and climate change.

In collaboration with our partners and clients, we select and tailor datasets, and apply analytical tools based on a strong understanding of the region, sector, and issue in question. We then provide interpretive services and decision-support to help identify opportunities, and prioritize options, for building climate resilience into all relevant aspects of policy, programs, strategy, planning and operations.

We take a strongly collaborative approach, to harness the wisdom of local experience and knowledge, and the critical insights that come of well-run, interdisciplinary processes.

Outcomes include greater awareness and understanding of climate change information to support decisions, and clear, defensible and measurable resilience plans.

Northern Climate Change Network

- NCCN linking five northern Ontario municipalities (and others) to:
 - Advance adaptation planning and risk assessment.
 - Peer-to-peer training and network building.



Future Assistance to CGS

1. Continue to deliver the NCCN
2. Provide direct support to City staff in risk prioritization and plan development
3. Seek activities to undertake different sorts of climate-related analyses (eg. cost-benefit analyses)
4. Utilize our connections to Federal and Provincial government colleagues to find funding opportunities and develop proposals to fund planning and implementation



Al Douglas

Al.Douglas@ClimateRiskInstitute.ca

705-929-1122