

City of Greater Sudbury

Parks, Open Space & Leisure

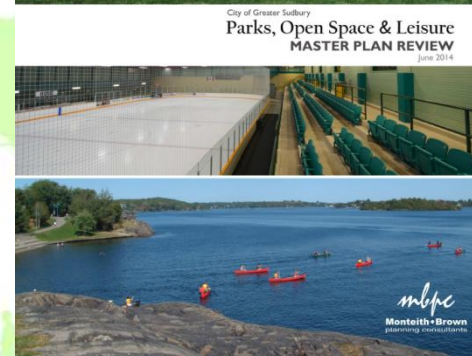
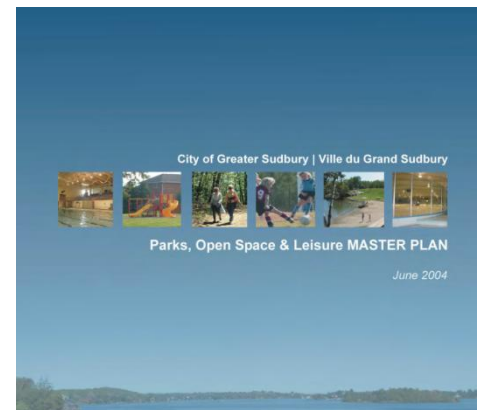
Master Plan Review

Community Services Committee
June 16, 2014



About the Master Plan Review

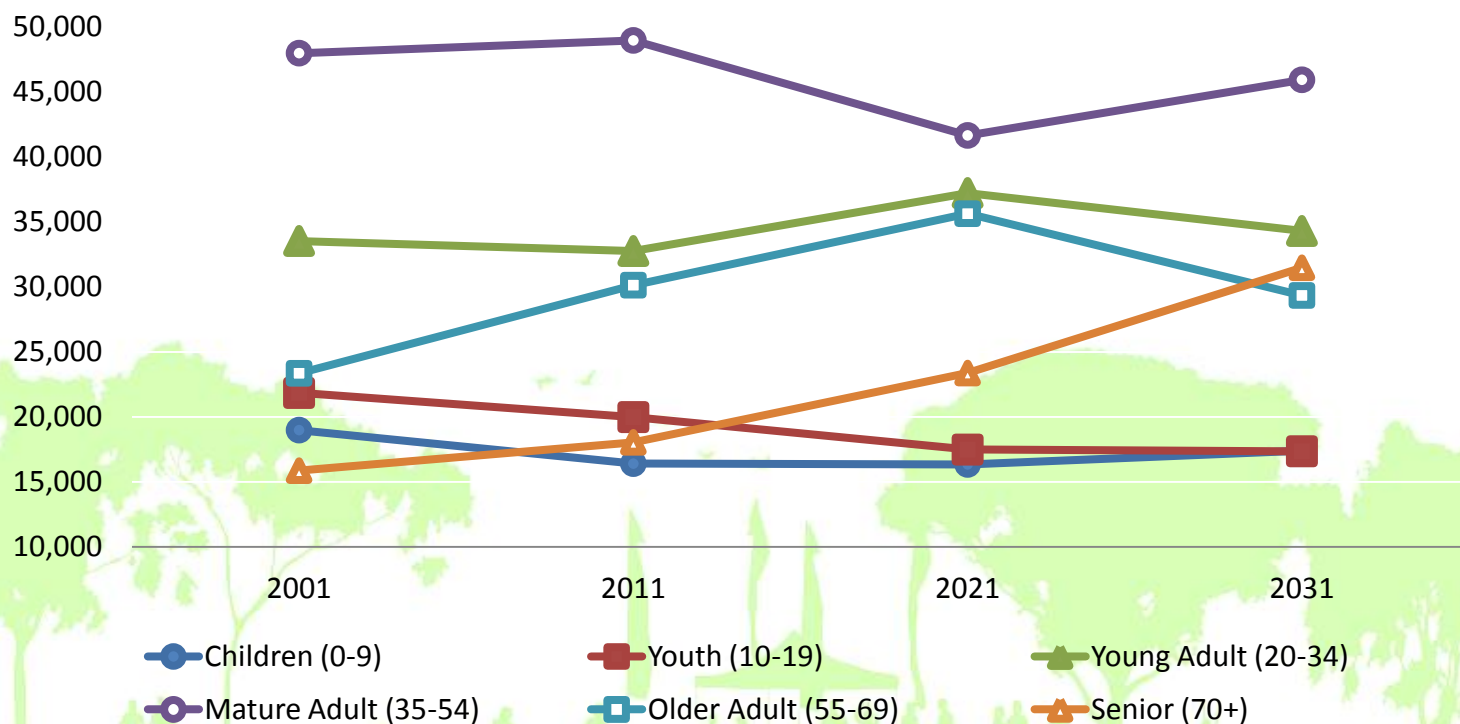
- Update of the 2004 Master Plan:
 - indoor and outdoor leisure facility needs
 - delivery of leisure services and programs
 - park policy
- Outlook to 2036



Key Considerations

1. Community profile and growth forecasts

Population by Age Cohort (Reference Forecast)



Key Considerations

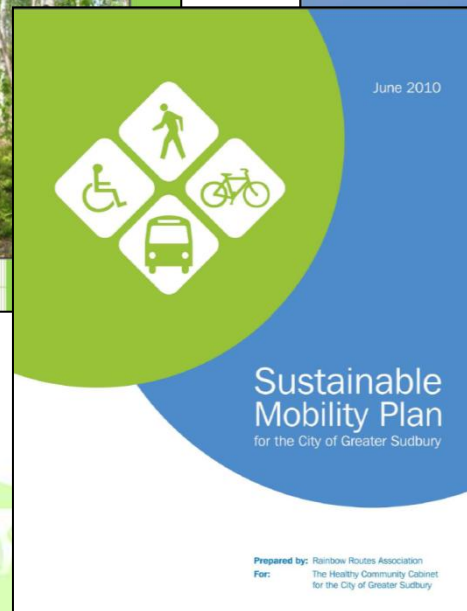
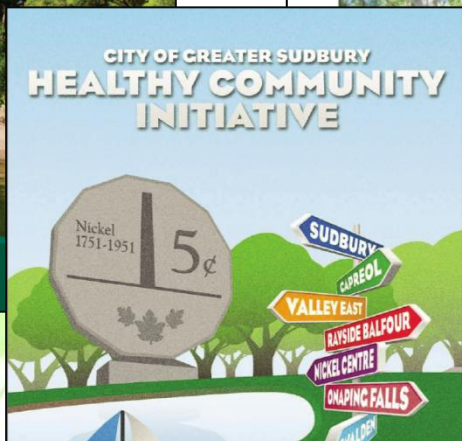
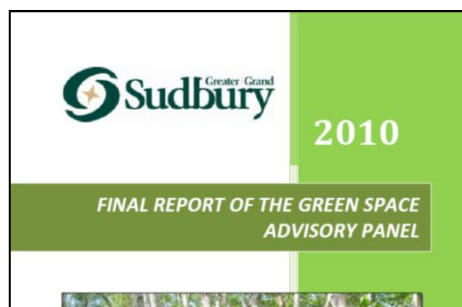
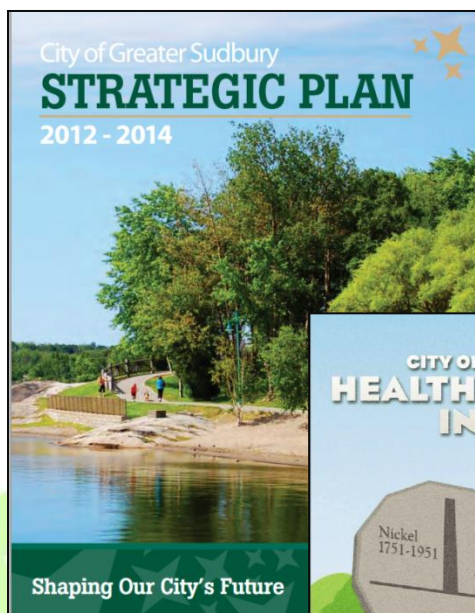
2. Trends and utilization data

- demand for unstructured, low cost activities
- emerging activities (pickleball, cricket)
- rising interest in outdoor recreation
- aging, single-purpose infrastructure



Key Considerations

3. Background documents and ongoing initiatives



Key Considerations

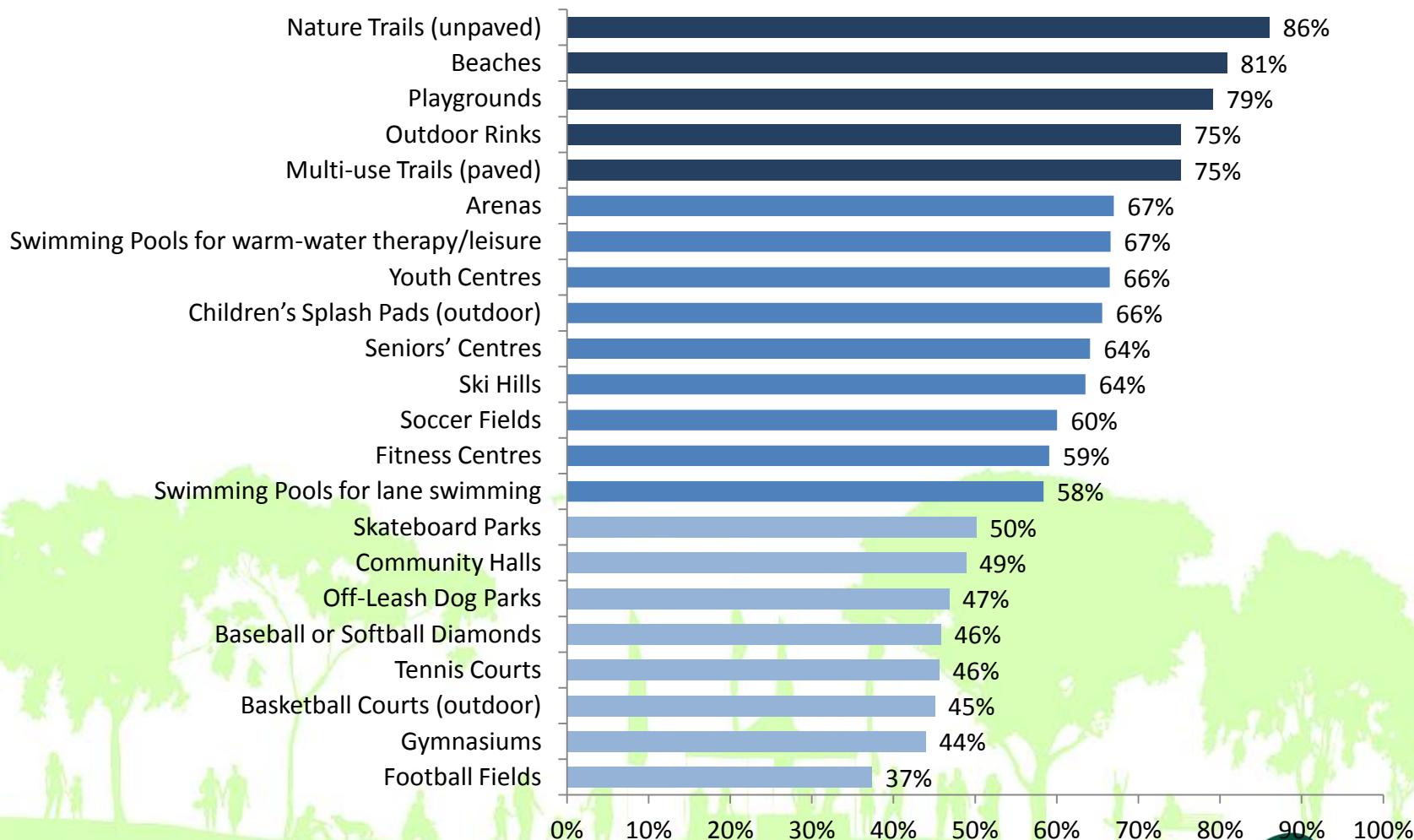
4. Input from the Public, Staff, and City Council

- 'close to home' opportunities
- connected system of trails and bike paths
- maintenance and cleanliness
- more promotion and awareness
- lower costs
- programs at different times / extended hours
- facility upgrades
- safe bike lanes



Key Considerations

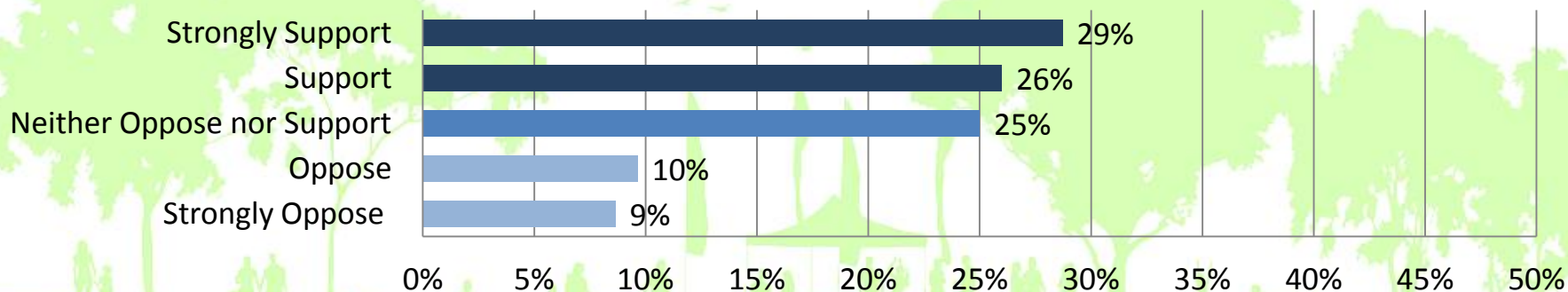
Support for Additional Municipal Spending



Key Actions – Indoor Facilities

1. Implementation of Arena Renewal Strategy
2. Pursuit of therapeutic/leisure pool at the Lionel E. Lalonde Centre
3. Review of all municipal indoor pools to evaluate options for facility renewal/closure

To what degree do you oppose or support the development of a therapeutic/leisure pool at the Lionel E. Lalonde Centre in Azilda?

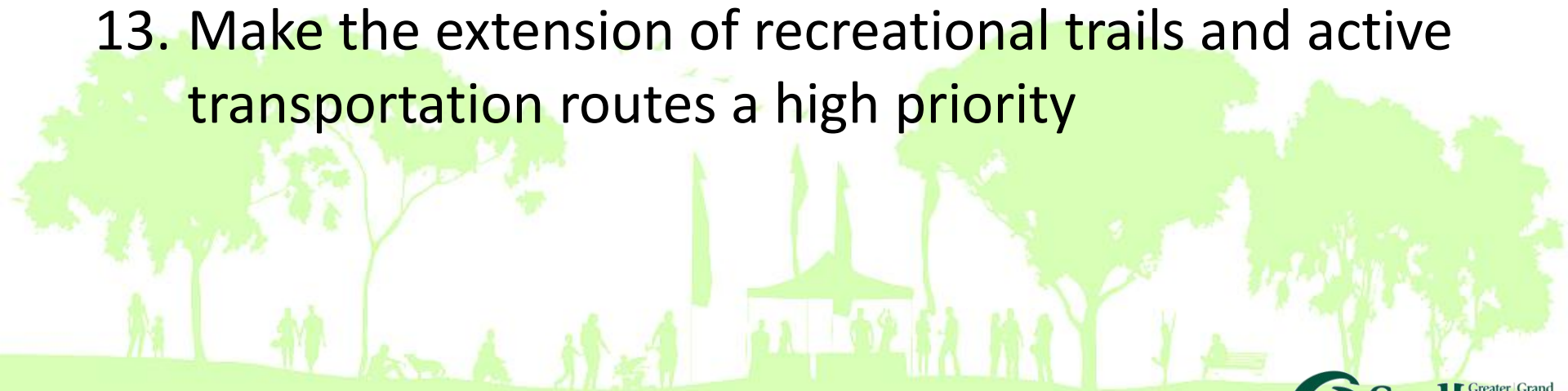


Key Actions – Outdoor Facilities

4. Evaluate surplus playground sites
5. Soccer fields: South End, Walden, and Rayside-Balfour
6. Splash pads: Garson, Onaping/Dowling, Capreol, South End, Minnow Lake, Bell Park, Azilda and/or Val Caron
7. Skate parks: Sudbury (up to 4) and Valley East
8. Continue to support off-leash dog park development
9. Undertake a review of the outdoor rink program

Key Actions – Parks & Trails

10. Establish maintenance standards for specific park types
11. Maintain an overall target of 4.0 hectares of active parkland per 1,000 residents
12. Address priority gaps in active parkland supplies
13. Make the extension of recreational trails and active transportation routes a high priority



Key Actions – Programs & Services

14. Finalize the Affordable Access to Recreation policy
15. Support programs that promote physical activity and social inclusion
16. Utilize the term “older adult” (not “senior”) and pursue “age-friendly” community status
17. Review the Communication and Marketing Strategy
18. Develop a standardized partnership framework



City of Greater Sudbury

Parks, Open Space & Leisure Master Plan Review

Discussion Period

