

WINTER CONTROL UPDATE

Presented by:

Randy Halverson, Manager of Operations,
Roads and Transportation Services,
Infrastructure Services.

November 18th, 2013



Winter Control Operations

- Winter Control started November 2nd
- Staff Assigned to Winter Control:
 - 104 City Staff
 - 30 Casual (Part Time)
 - Contract Crews
- Shifts:
 - Monday to Friday – Winter control staff are required to work shift work
 - Weekend coverage using City staff, casuals, and Contractors

Winter Control Fleet

	CGS (Includes Spare Equipment)	Contractors
Plows	34 tandem axle combination plows 1 single axle combination plow 2 single axle underbody plow / sanders 5 single axle plow / wing (dump body) 7 graders 28 Municipal Tractors (for sidewalks)	23 tandem axle combination plows 4 graders
Loaders	11	6
Snow Blowers	3	0
4 x 4	5	4
DLA Trucks (anti icing)	2	0

Snow Plowing - *Roadways*

Service Levels for Class 1 to 3:

- 17 Routes (plus 4 echelon beats)
- Commence plowing at 5 cm and continue until event concludes
- Roadway plowing completed within 3 to 8 hours after event concludes
- Freezing rain events (once detected): immediate sand/salt application



Snow Plowing - *Roadways*

Service Levels for Class 4 to 6:

- 28 Routes
- Commence plowing at 8 cm and continue until event concludes
- Roadway plowing completed within 24 hours after event concludes
- Freezing rain events (once detected): immediate sand application



Snow Plowing – *MPL's, Lanes and Cul-de-sacs*



10 Routes

- 191 Lanes
- 401 Cul-de-sacs and bulb-outs
- 32 MPL's (Municipal Parking Lots)

Snow Plowing – *Sidewalks*

Service Levels:

- 20 Routes
- Commence at 8 cm or once icy conditions detected and continue until event concludes
- Snow clearing within 12 to 24 hours after event concludes
- City downtown business core plowed 5 days a week (Midnight to 8:00 a.m.)



Snow Removal



- Downtown Business District - budgeted twice per year
- Intersection sight lines as required
- Lane width and traffic capacity as required
- Selected Bus Stops within 1 to 2 days after winter event clean up has been completed

Technology – *Weather Forecasts*

Issued at Wed, Nov 13, 2013 00:00 EST



NO ENVIRONMENT CANADA WARNINGS IN EFFECT FOR GREATER SUDBURY AND VICINITY AT TIME OF ISSUE

WEDNESDAY Variably cloudy during the day. Winds southwesterly 25km/h becoming 35km/h. Variably cloudy during the night. Winds southwesterly 35km/h becoming 30km/h.
THURSDAY Mainly cloudy in the morning with showers developing in the afternoon, probability of precipitation 40%. Winds southwesterly 25km/h becoming 20km/h. Cloudy with showers in the evening, light rain developing overnight, probability of precipitation 70%. Winds light.

Day	Wed, Nov 13 2013														Thurs, Nov 14 2013																																		
Period	Overnight					Morning					Afternoon				Evening				Overnight					Morning					Afternoon				Evening																
Local Time (24hr)	0	1	2	3	4	5	6	7	8	9	10	11	12	13	14	15	16	17	18	19	20	21	22	23	0	1	2	3	4	5	6	7	8	9	10	11	12	13	14	15	16	17	18	19	20	21	22	23	
Showers																																																	
Snow																																																	
Flurries																																																	
Sky Condition	CLOUDY PERIODS					VARIABLELY CLOUDY										VARIABLELY CLOUDY				CLOUDY					CLOUDY																								
Sunshine (% period)	0					30										0				10					0																								
Local Time (24hr)	0-3	3-6				6-9	9-12				12-15	15-18				18-21	21-0				0-3	3-6				6-9	9-12				12-15	15-18				18-21	21-0												
Rainfall (mm)	0.0	0.0				0.0	0.0				0.0	0.0				0.0	0.0				0.0	0.0				0.0	0.0				0.2	0.3				0.1	0.0												
Snowfall (cm)	0.0	0.0				0.0	0.0				0.0	0.0				0.0	0.0				0.0	0.0				0.0	0.0				0.0	0.0				0.0	0.0												
POP (%)	20	30				30	20				20	20				30	20				30	20				30	30				40	40				40	30												
Air Temperature (°C)	-8	-7				-4	-1				3	3				3	3				3	3				3	6				6	6				5	4												
Dew Point (°C)	-13	-11				-7	-5				-3	-3				-2	-1				0	1				1	2				2	2				2	1												
Relative Humidity (%)	67	73				80	74				65	65				70	75				81	87				87	75				75	75				81	81												
Wind Direction (8-pt)	SW	S				SW	SW				SW	SW				SW	SW				SW	SW				SW	SW				SW	SW				SW	SW												
Wind Speed (km/h)	6	8				12	17				29	33				33	33				27	25				27	21				21	17				15	13												
Wind Gusts (km/h)											32	48				50	50				44	38				41	35				32																		
Wind Chill (°C)	-11	-11				-9	-6				-3	-3				-3	-3				-2	-2				-2	-2				2	2				3	1												

Day	Fri, Nov 15 2013																							Sat, Nov 16 2013																										
Period	Overnight					Morning					Afternoon					Evening					Overnight					Morning					Afternoon					Evening														
Local Time (24hr)	0	1	2	3	4	5	6	7	8	9	10	11	12	13	14	15	16	17	18	19	20	21	22	23	0	1	2	3	4	5	6	7	8	9	10	11	12	13	14	15	16	17	18	19	20	21	22	23		
Rain				X																																														
Showers	X	X	X		X	X	X	X	X	X	X	X	X	X	X	X	X	X																																
Snow																																																		
Flurries																																																		
Sky Condition	CLOUDY										CLOUDY										CLOUDY										MAINLY CLOUDY										CLOUDY									
Sunshine (% period)	0										0					0										50										0														
Local Time (24hr)	0-3	3-6				6-9	9-12	12-15				15-18	18-21				21-0					0-3	3-6	6-9				9-12	12-15	15-18	18-21				21-0															
Rainfall (mm)	0.8	1.2	0.7	0.5	0.6	0.3	0.0	0.0	0.0	0.0	0.0	0.3	0.0	0.0	0.0	0.0	0.1	0.1	0.0	0.0	0.0	0.0	0.0	0.0	0.0	0.0	0.0	0.0	0.0	0.0	0.1	1.2	1.4	0.0	0.0	0.0	0.0	0.0	0.0	0.0	0.0	0.0	0.0	0.0	0.0	0.0				
Snowfall (cm)	0.0	0.0	0.0	0.0	0.0	0.0	0.0	0.0	0.0	0.0	0.0	0.0	0.0	0.0	0.0	0.0	0.0	0.0	0.0	0.0	0.0	0.0	0.0	0.0	0.0	0.0	0.0	0.0	0.0	0.0	0.0	0.0	0.0	0.0	0.0	0.0	0.0	0.0	0.0	0.0	0.0	0.0	0.0	0.0	0.0	0.0	0.0			
POP (%)	70	70	70	70	65	60	60	60	60	60	60	60	40	40	40	40	40	40	40	40	40	40	40	40	40	40	40	40	40	40	40	40	40	40	40	40	40	40	40	40	40	40	40	40	40	40	40	40		
Air Temperature (°C)	3	2	2	2	5	5	5	5	5	5	5	5	5	5	5	5	5	4	4	5	8	7	6	6	6	6	6	6	6	6	6	6	6	6	6	6	6	6	6	6	6	6	6	6	6	6	6	6		
Dew Point (°C)	1	1	1	1	4	4	4	4	4	4	4	4	3	3	2	1	1	1	1	1	1	1	1	1	1	1	1	1	1	1	1	1	1	1	1	1	1	1	1	1	1	1	1	1	1	1	1	1		
Relative Humidity (%)	87	93	93	93	93	93	93	93	93	93	93	93	87	87	87	87	87	87	87	87	87	87	87	87	87	87	87	87	87	87	87	87	87	87	87	87	87	87	87	87	87	87	87	87	87	87	87	87		
Wind Direction (8-pt)	SW	SW	SW	SW	SW	SW	SW	SW	SW	SW	SW	SW	SW	SW	SW	SW	SW	SW	SW	SW	SW	SW	SW	SW	SW	SW	SW	SW	SW	SW	SW	SW	SW	SW	SW	SW	SW	SW	SW	SW	SW	SW	SW	SW	SW	SW	SW	SW	SW	SW
Wind Speed (km/h)	11	12	17	17	17	18	18	17	16	17	16	16	16	17	16	17	13	14	15	15	15	17	17	15	15	15	15	15	15	15	15	15	15	15	15	15	15	15	15	15	15	15	15	15	15	15	15	15	15	
Wind Gusts (km/h)	0	-2	-2	-2	1	1	1	1	1	1	1	1	2	2	2	2	2	2	2	2	2	2	2	2	2	2	2	2	2	2	2	2	2	2	2	2	2	2	2	2	2	2	2	2	2	2	2	2		

FRIDAY Goudy w/ show ers during the day, probability of precipitation 70%. Winds southwesterly 20km/h. Goudy w/ show ers during the night, probability of precipitation 40%. Winds southwesterly 20km/h becoming 15km/h. High 5, Low 4.

SATURDAY Mainly sunny with cloudy periods in the morning with isolated showers developing in the afternoon, probability of precipitation 40%. Winds light. Cloudy with light rain in the evening, tapering to showers overnight, probability of precipitation 70%. Winds light. High 8, evening Low of 6 warming to 7 overnight.

SUNDAY Cloudy with light rain during the day, probability of precipitation 80%. Winds light. Rain during the night, probability of precipitation 100%. Winds southerly 20km/h becoming 25km/h. High 9, Low 6.

MONDAY Cloudy with light rain in the morning, becoming rain in the afternoon, probability of precipitation 90%. Winds southerly 25km/h. Cloudy with light rain in the evening changing to a few flurries overnight, probability of precipitation 70%. Winds southwesterly 20km/h. High 4, Low 1.

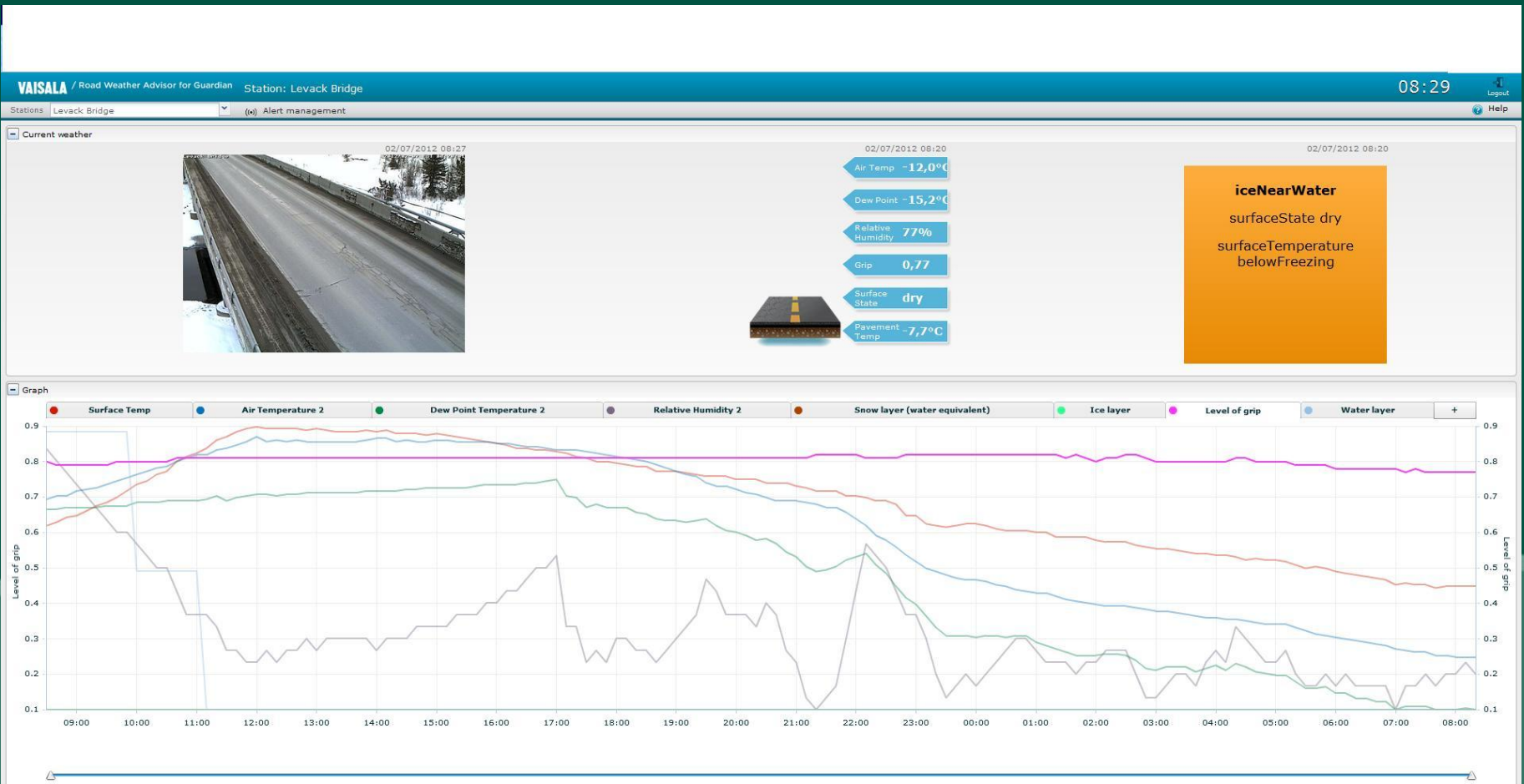
TUESDAY Mainly cloudy with isolated showers in the morning, snow or rain showers in the afternoon, probability of precipitation 40%. Winds southwesterly 20km/h shifting to northerly 20km/h. Mainly cloudy with a few flurries ending in the evening, mainly clear overnight. Winds light. Morning High 4, cooling to 3 in the afternoon, Low -6 overnight.

Forecast provided by The Weather Network Commercial Services © 2013



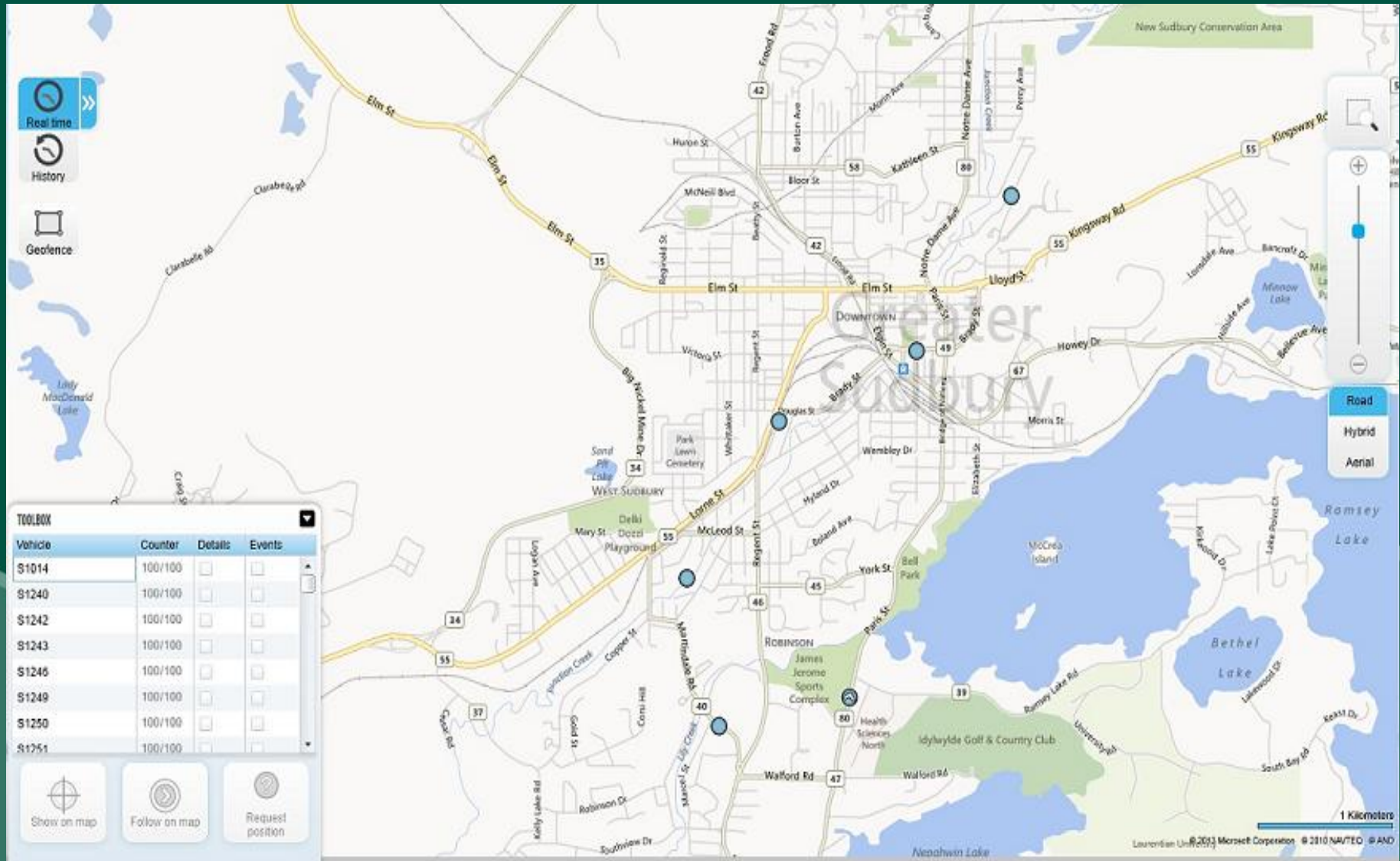
Technology – *RWIS*

(Road Weather Information System)



Onaping River Bridge, Levack

Technology – AVL Project



THANK YOU

Questions?

