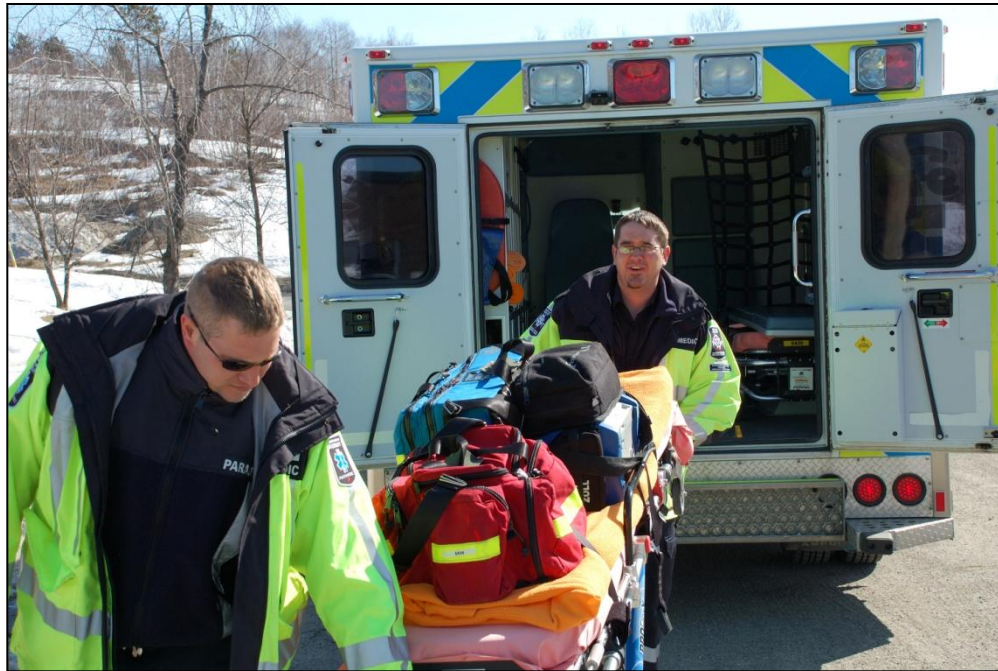


# Paramedical Services Update



**Deputy Chief Aaron Archibald**  
**EMS Operations**  
**Community Services Committee**  
**June 13, 2013**



# Overview

<b>Background</b>	<ul style="list-style-type: none"><li>➤ Paramedic Practice</li><li>➤ Service Governance</li></ul>
<b>Operational Measures</b>	<ul style="list-style-type: none"><li>➤ Service request volume</li><li>➤ Deployed Paramedic Hours</li><li>➤ Response Times</li><li>➤ Patient Transfer Delays (AODs)</li></ul>
<b>Strategic Insights</b>	<ul style="list-style-type: none"><li>➤ Future Challenges (aging population)</li></ul>
<b>Recent Achievements</b>	<ul style="list-style-type: none"><li>➤ Ongoing Successes</li></ul>



# Paramedic Practice

(Background)



**Advanced Cardiac Intervention**

**Advanced Neonatal Care**



**Specialized Medication**



**Advanced Airway Management**

1990

1995

2000

2005

Current



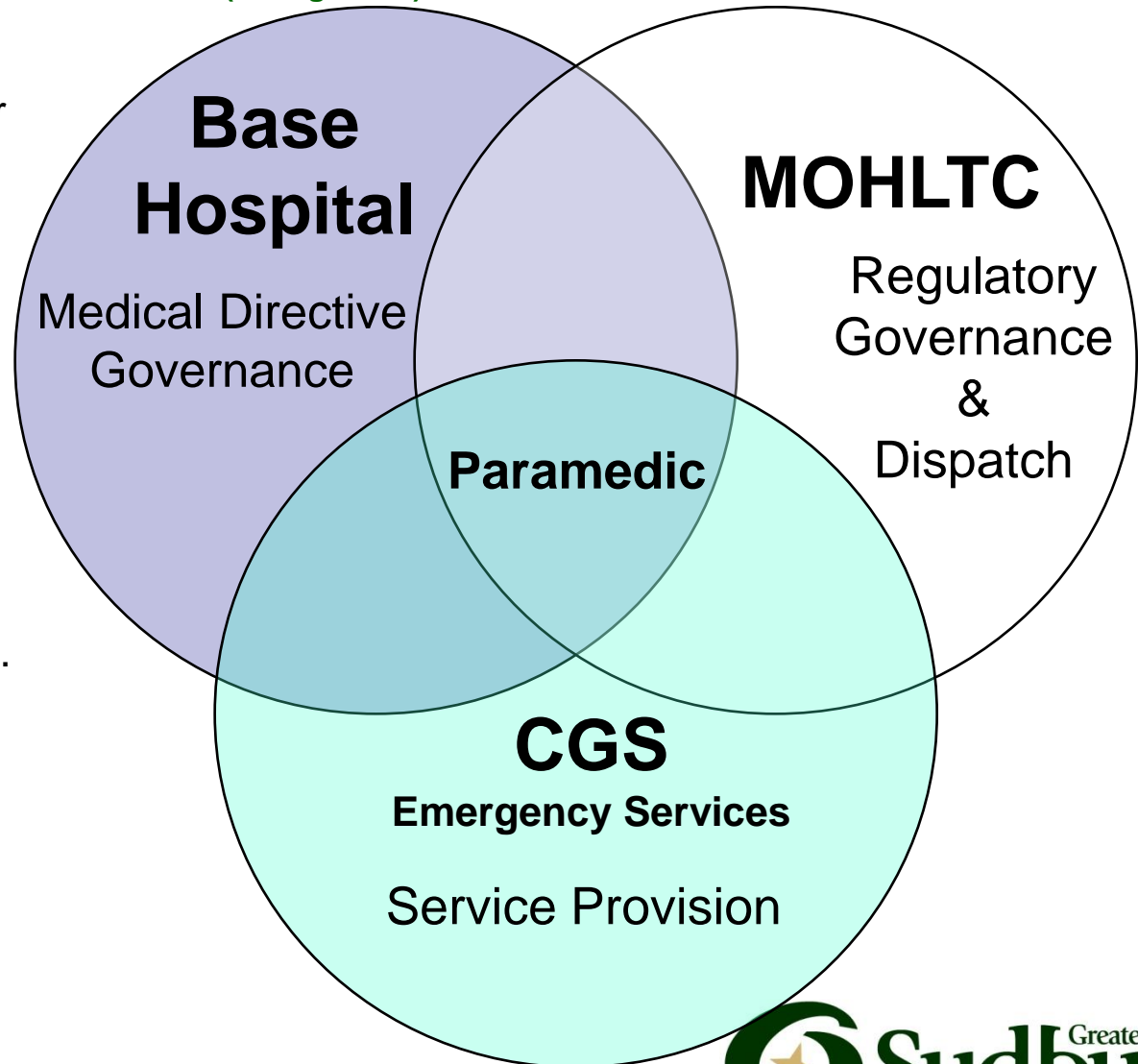
# Service Governance

(Background)

Regulatory governance within the health care sector is multifaceted, very demanding, and requires tight partnerships between the agencies.

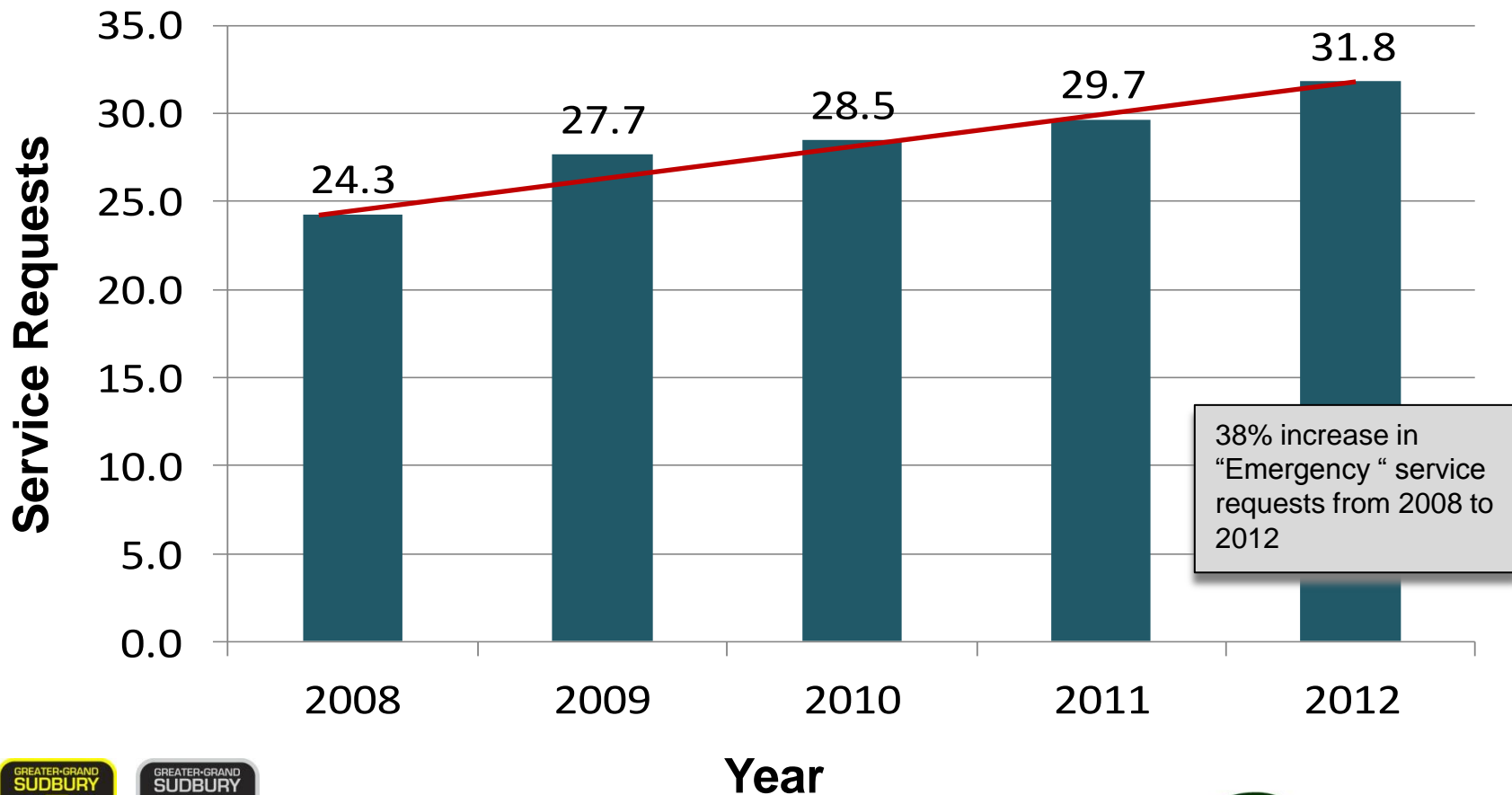
Unlike other professions Paramedical Services are simultaneously under the jurisdiction of multiple agencies and CGS while performing their daily duties.

This adds significant complexity to both service provision and the role of a Paramedic in the field.



# Service Request Volume (Measures)

## Emergency Calls (Thousands)

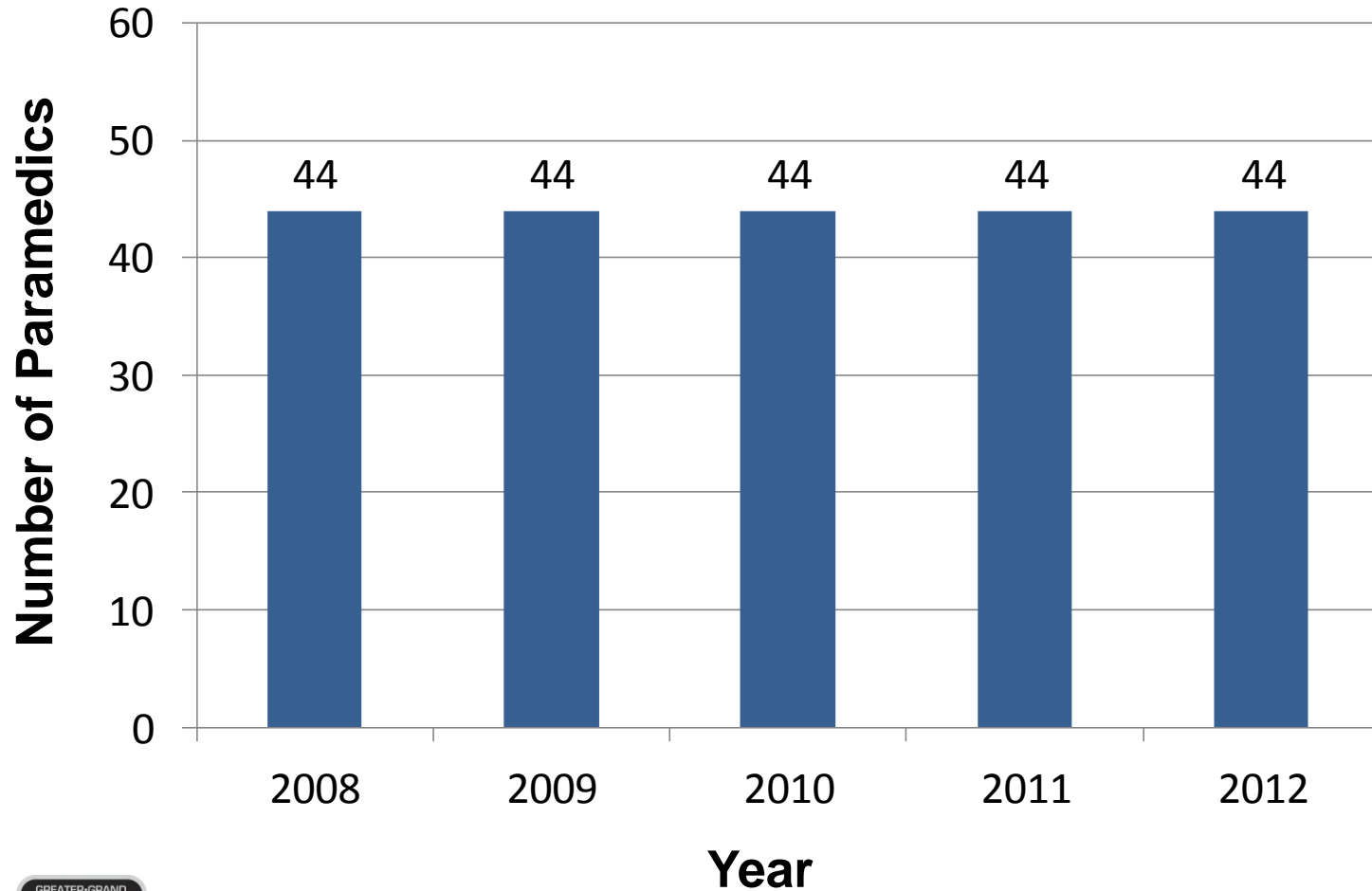


Data source: ADDAS for 2008, 2009, 2010, 2011 data; ADRS system for 2012 data



# Deployed Paramedics (Measures)

Number of Paramedics in the field each day

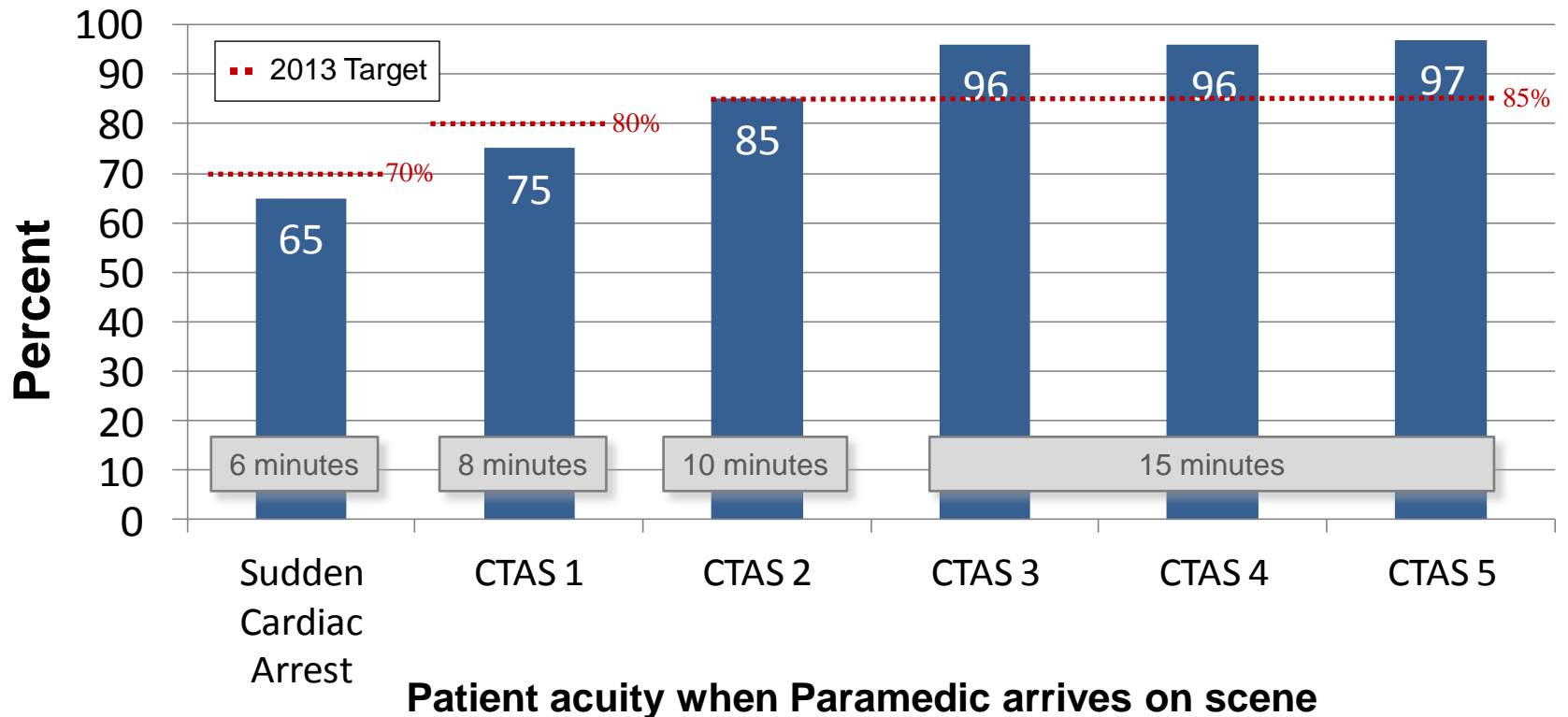


Data source: City of Greater Sudbury Emergency Services System Status Plan (version V, 2012-01)



# Response Times - Q1 2013 (Measures)

Percent of service requests within response time targets  
As per new regulatory measurements (2013)

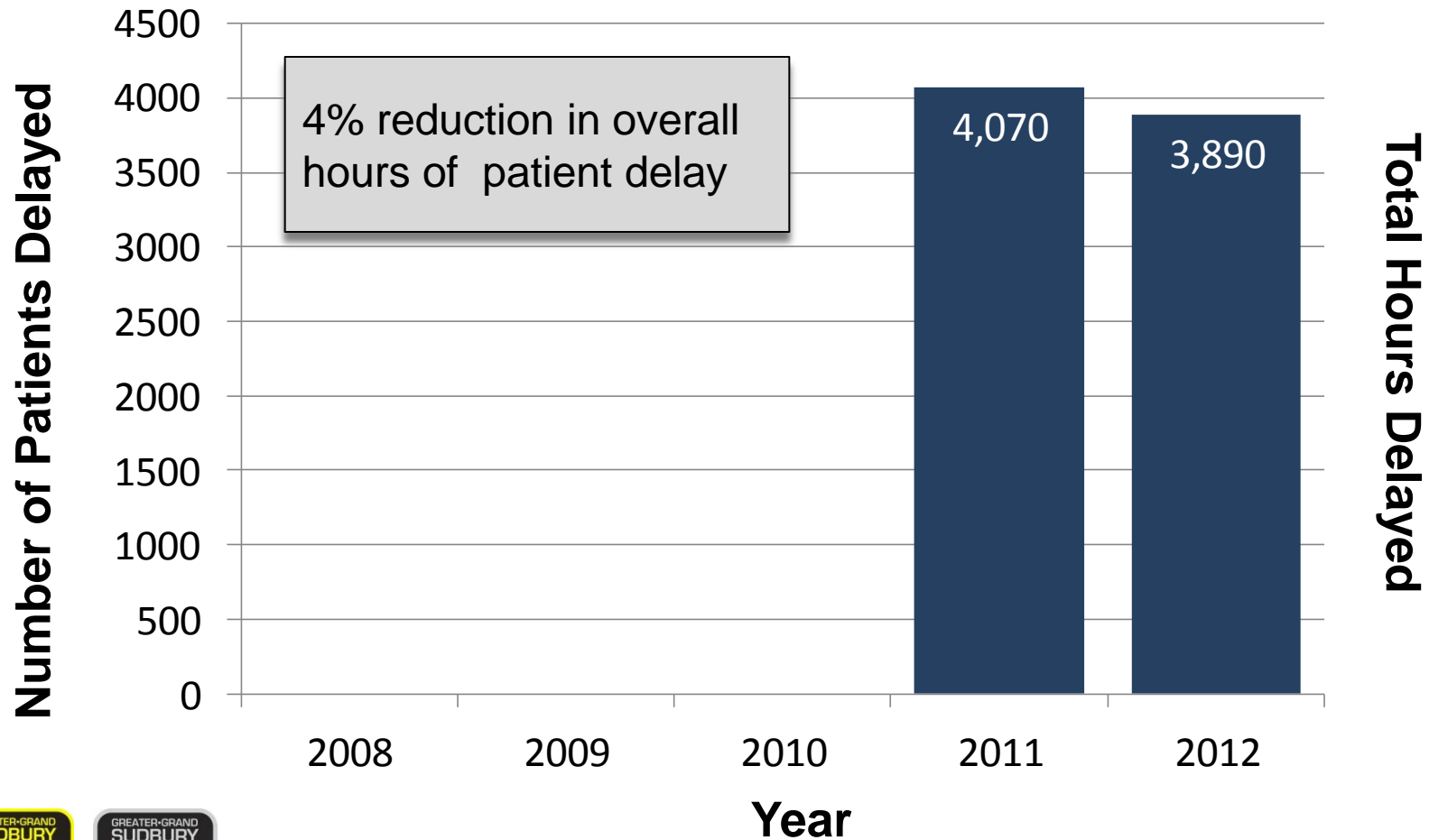


Data source: iMedic ePCR system & MOHLC ADRS system



# Patient Transfer Delays (Measures)

Number of patients delayed at the Emergency Department (AODs)



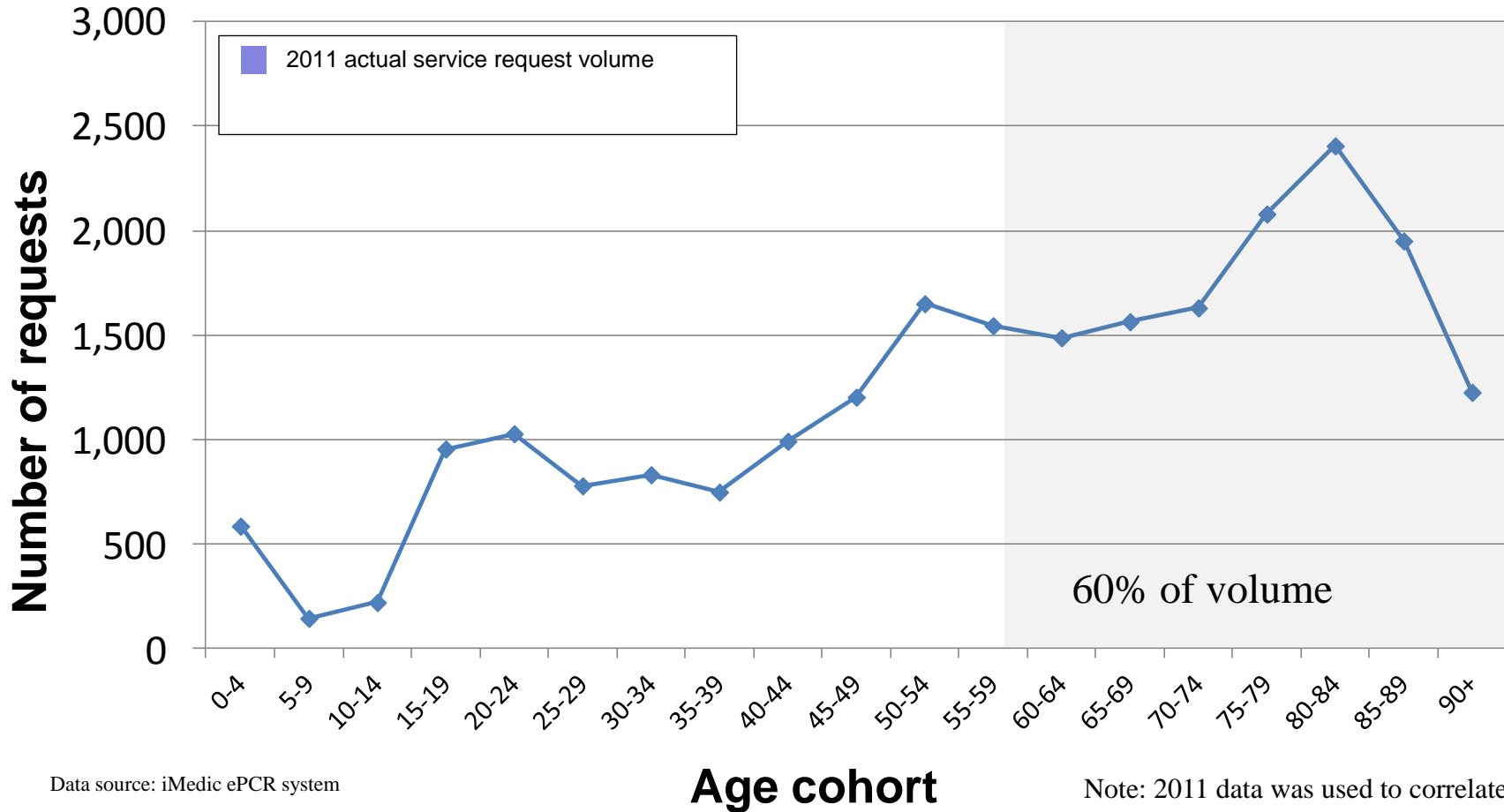
Data source: AOD data from CGS AOD tracking system.  
Note: Prior to 2011 total hours delayed is not available.





# Future Challenges (Insights)

## Service requests by age 2011



Data source: iMedic ePCR system

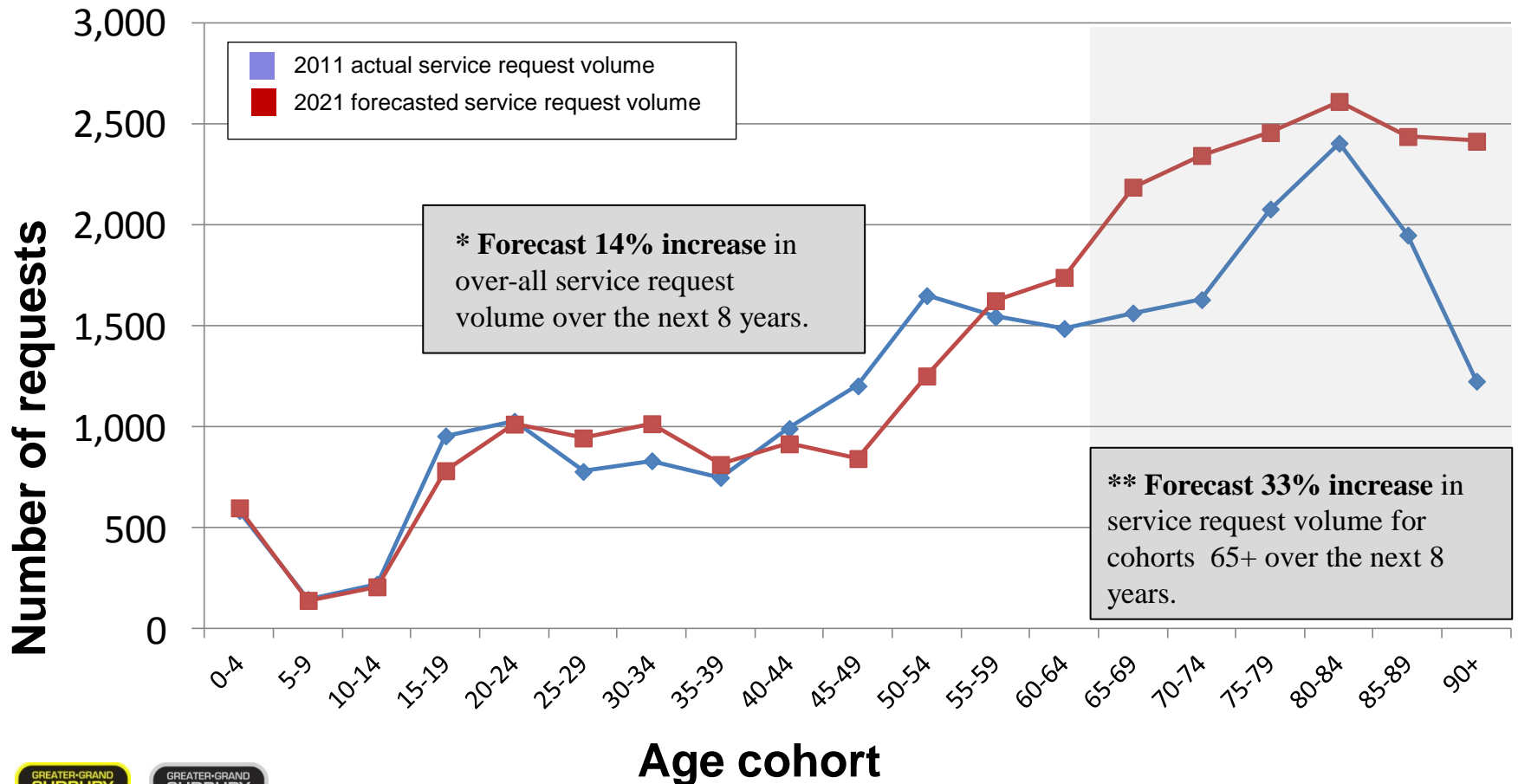
Note: 2011 data was used to correlate with Census population data



# Future Challenges (Insights)

## Aging Population

### Service requests by age 2011 versus 2021 forecast



Data source: City of Greater Sudbury, Planning Services Division for future population projections (scenario 1: constant employment) & iMedic ePcr system



# Ongoing Successes (Achievements)



# Questions?

