

# Route Planning and Environmental Assessment Study

Highway 17 from Sudbury to Markstay and  
Highway 69 from Estaire Road to Highway 17  
GWP 5031-09-00

Presentation to CGS Operations Committee  
April 15, 2013

One Team. Infinite Solutions



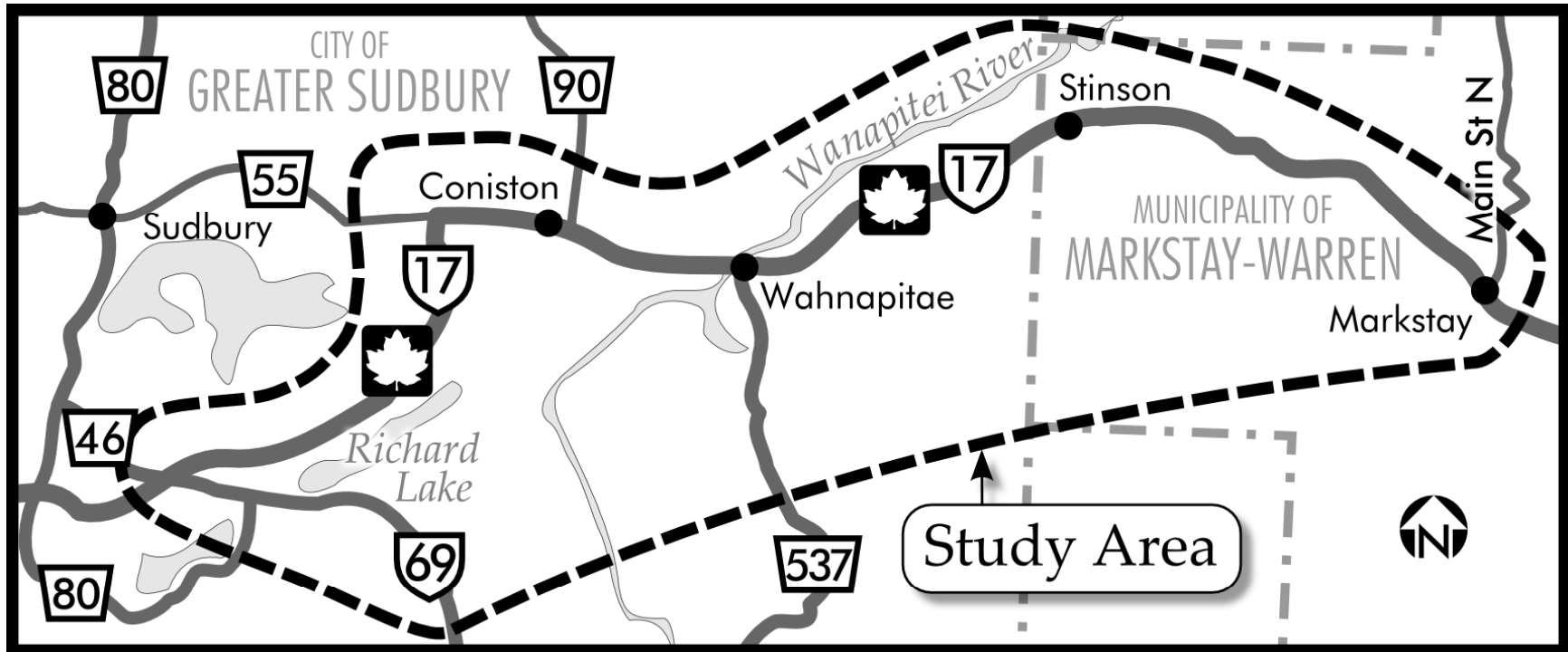
**Stantec**



Ministry of  
**Transportation**

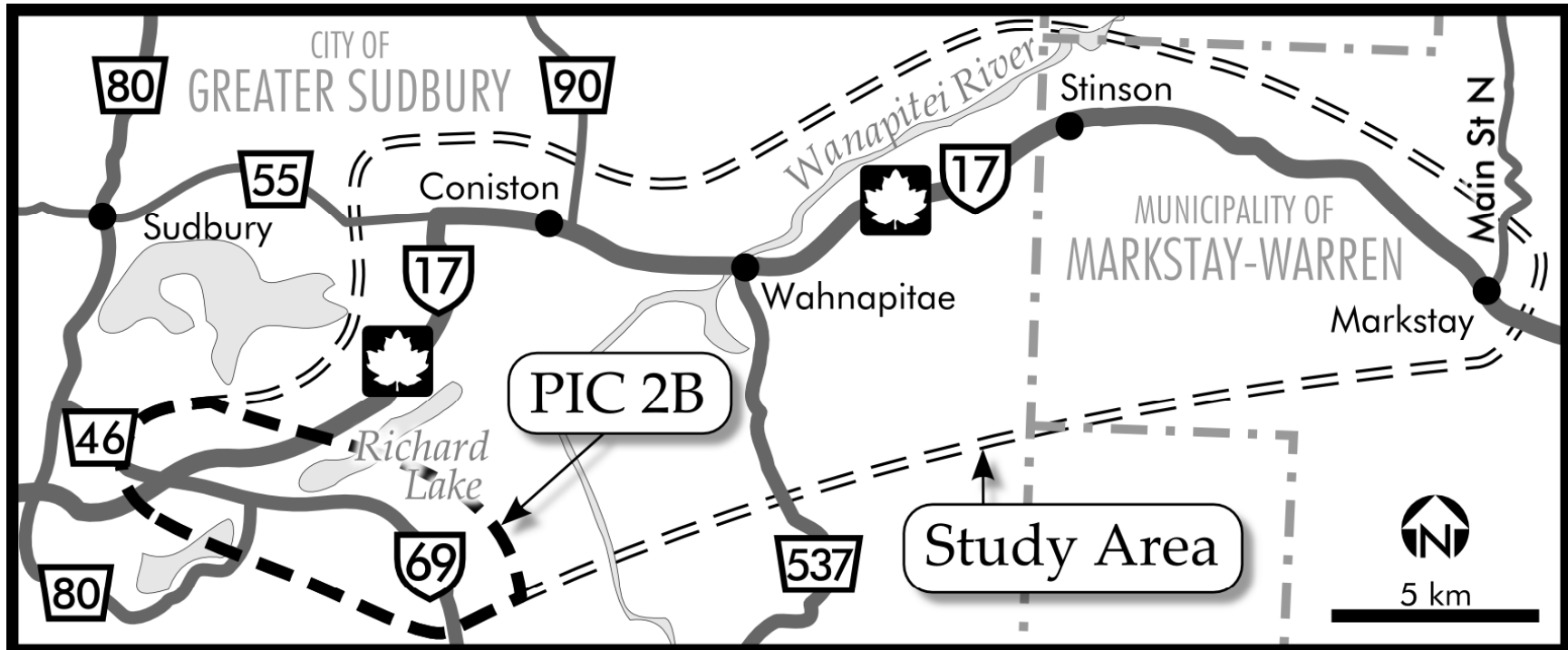
## Study Area Plan

Highway 17 from Sudbury to Markstay and Highway 69 from Estaire Road to Highway 17  
GWP 5031-09-00



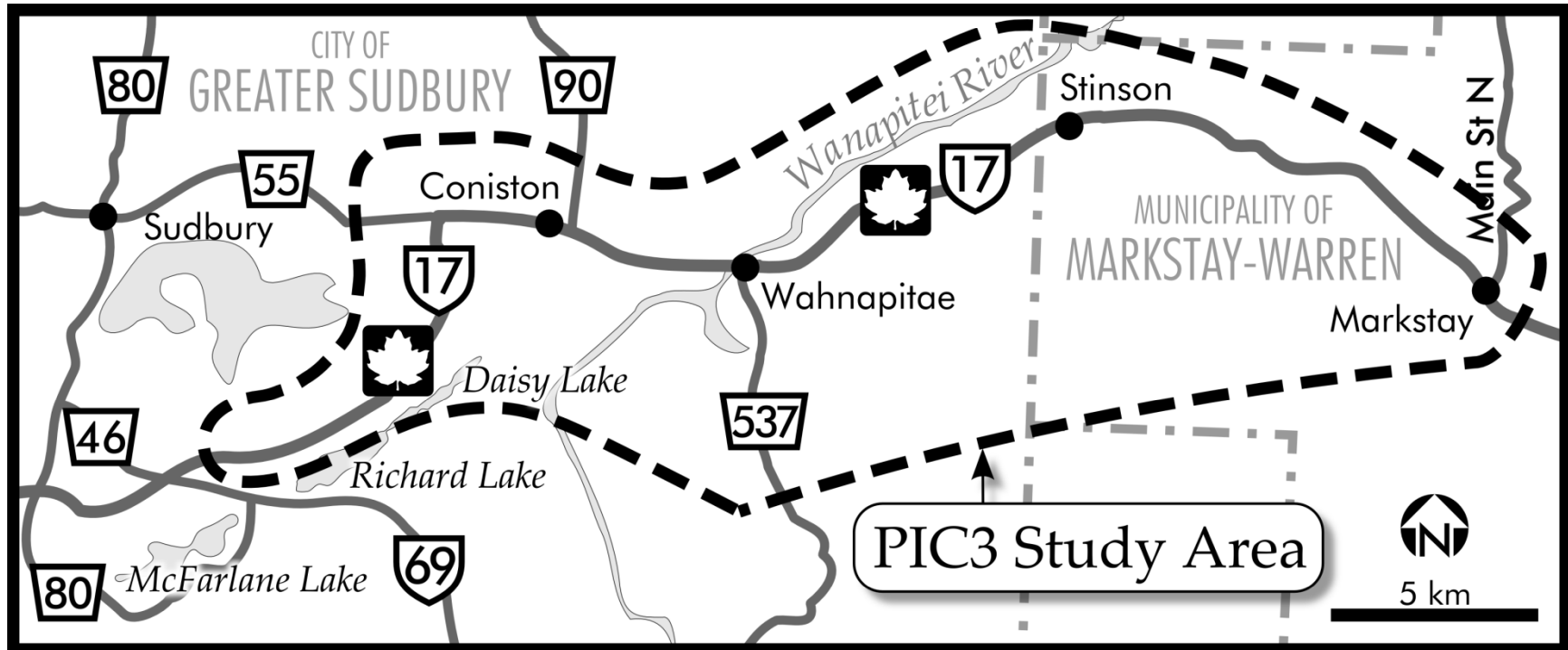
## Study Area Plan

Highway 69 from Estaire Road to Highway 17  
GWP 5031-09-00



# Study Area Plan

Highway 17 from Sudbury to Markstay  
GWP 5031-09-00



## Study Purpose

Highway 17 from Sudbury to Markstay  
GWP 5031-09-00

- The purpose of the study is to identify a four-lane Controlled Access Highway, with access restricted to interchange locations only, for Highway 17 and Highway 69 within the study limits
- A four-lane divided Controlled Access Highway is the preferred standard for Highway 17 and Highway 69
- Four-laning will improve highway safety by:
  - » Separating opposing traffic with a wide median
  - » Providing safe passing opportunities without the risk of opposing traffic
  - » Removing potential vehicle conflicts associated with at-grade intersections and entrances

## Public Consultation

Highway 17 from Sudbury to Markstay  
GWP 5031-09-00

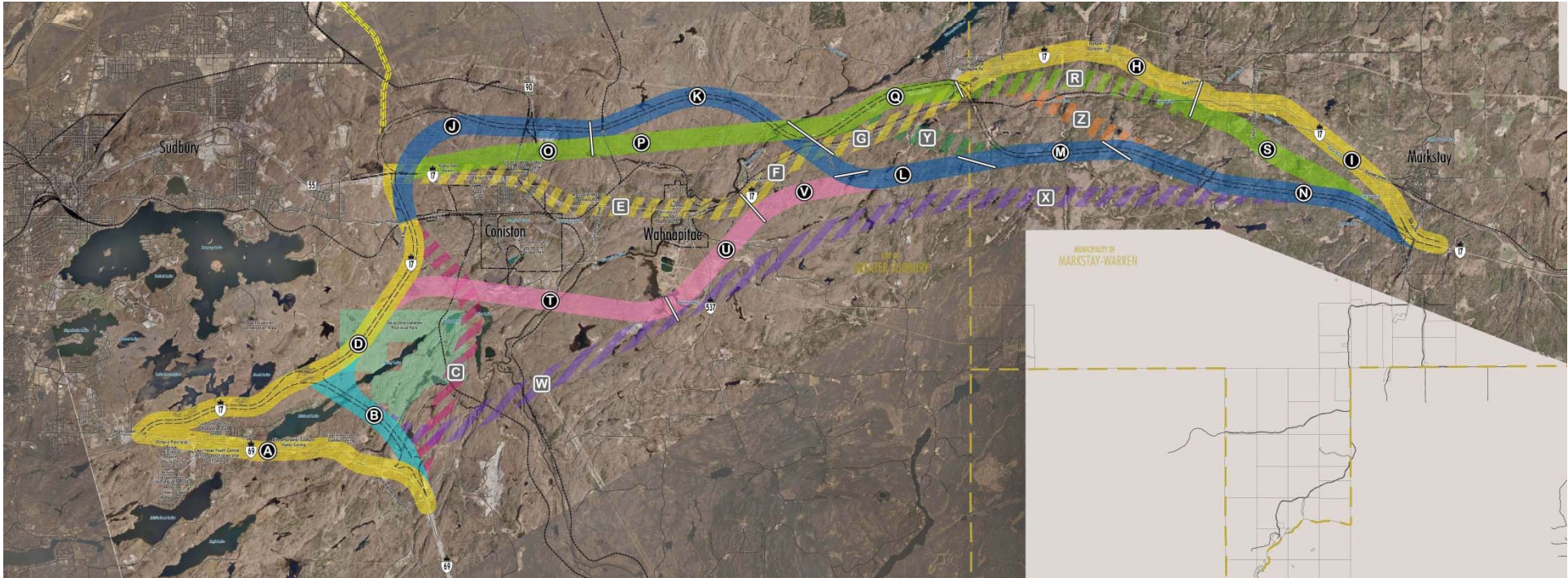
- Public Information Centre 1 – February 2011
  - » Present and seek input on the Corridor Alternatives
- Public Information Centre 2 – February/March 2012
  - » Present and seek input on the Route Alternatives
- Public Information Centre 2B – October 2012
  - » Present and seek input on two Highway 69 alternatives
- Public Information Centre 3 – April 2013
  - » Present and seek input on the Highway 17 Preferred Plan
- Public Information Centre 3B – Spring 2013
  - » Present and seek input on the Highway 69 Preferred Plan
- Transportation Environmental Study Report – Fall 2013
  - » 30-day Public Review Period

 We are Here



# Corridor Alternatives (PIC 1)

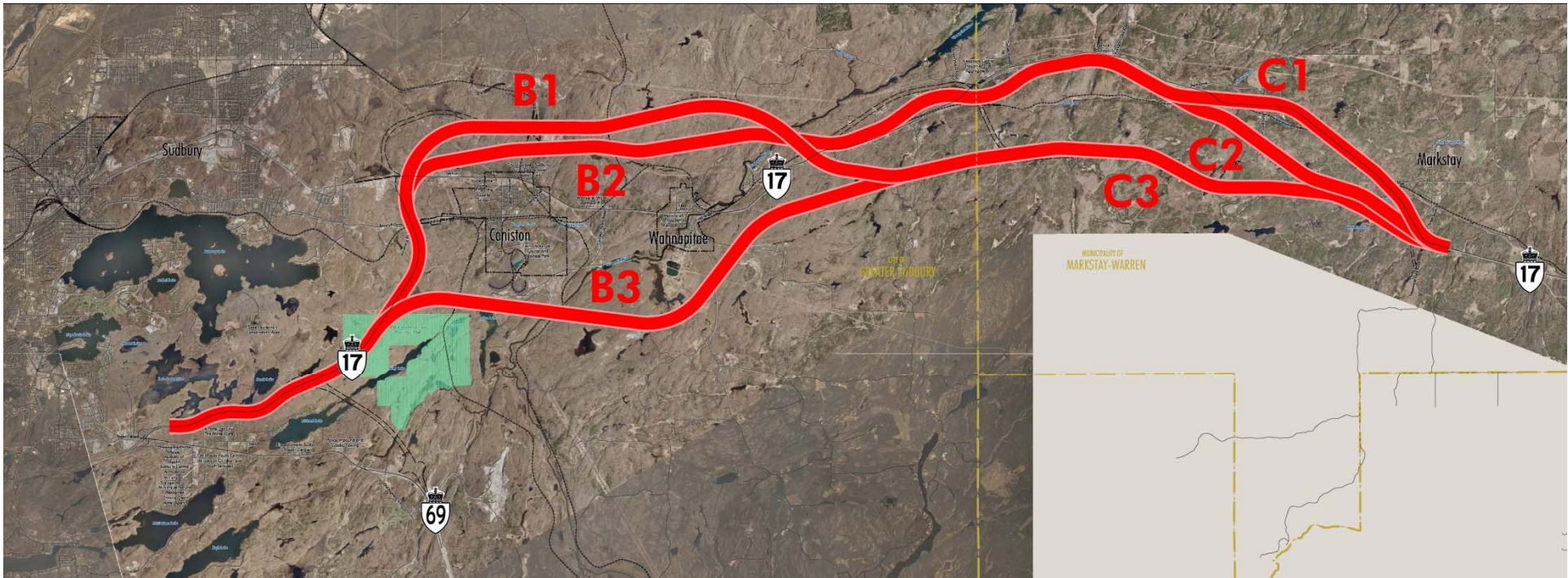
Highway 17 from Sudbury to Markstay  
GWP 5031-09-00





# Highway 17 Alternatives

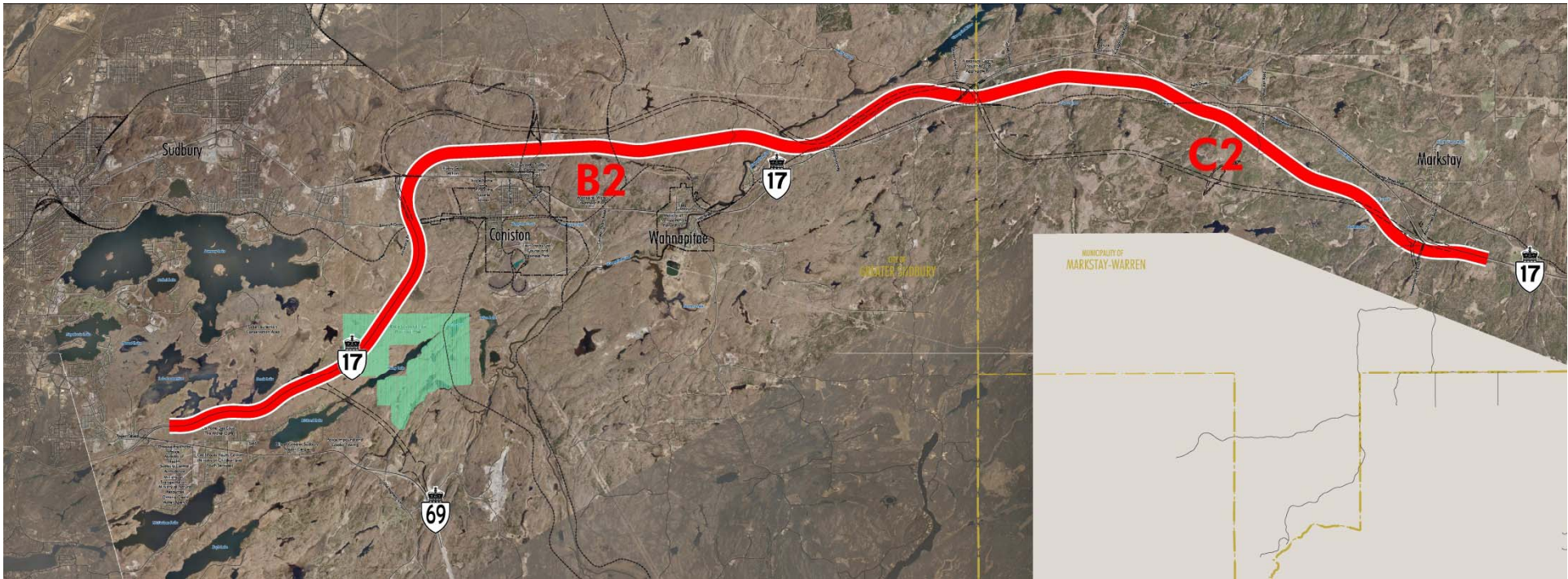
Highway 17 from Sudbury to Markstay  
GWP 5031-09-00





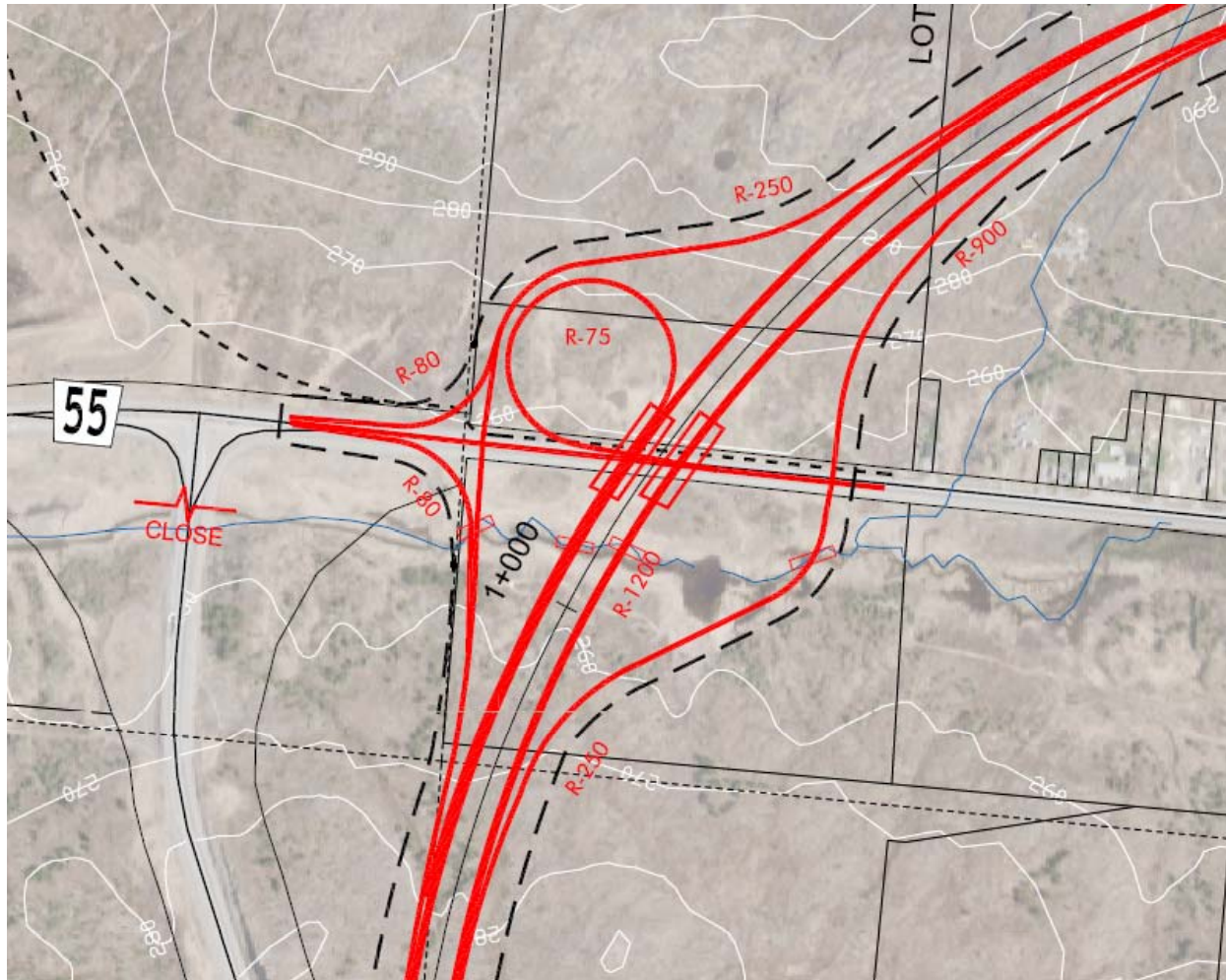
# Highway 17 Preferred Plan

Highway 17 from Sudbury to Markstay  
GWP 5031-09-00



# Highway 17 Preferred Plan

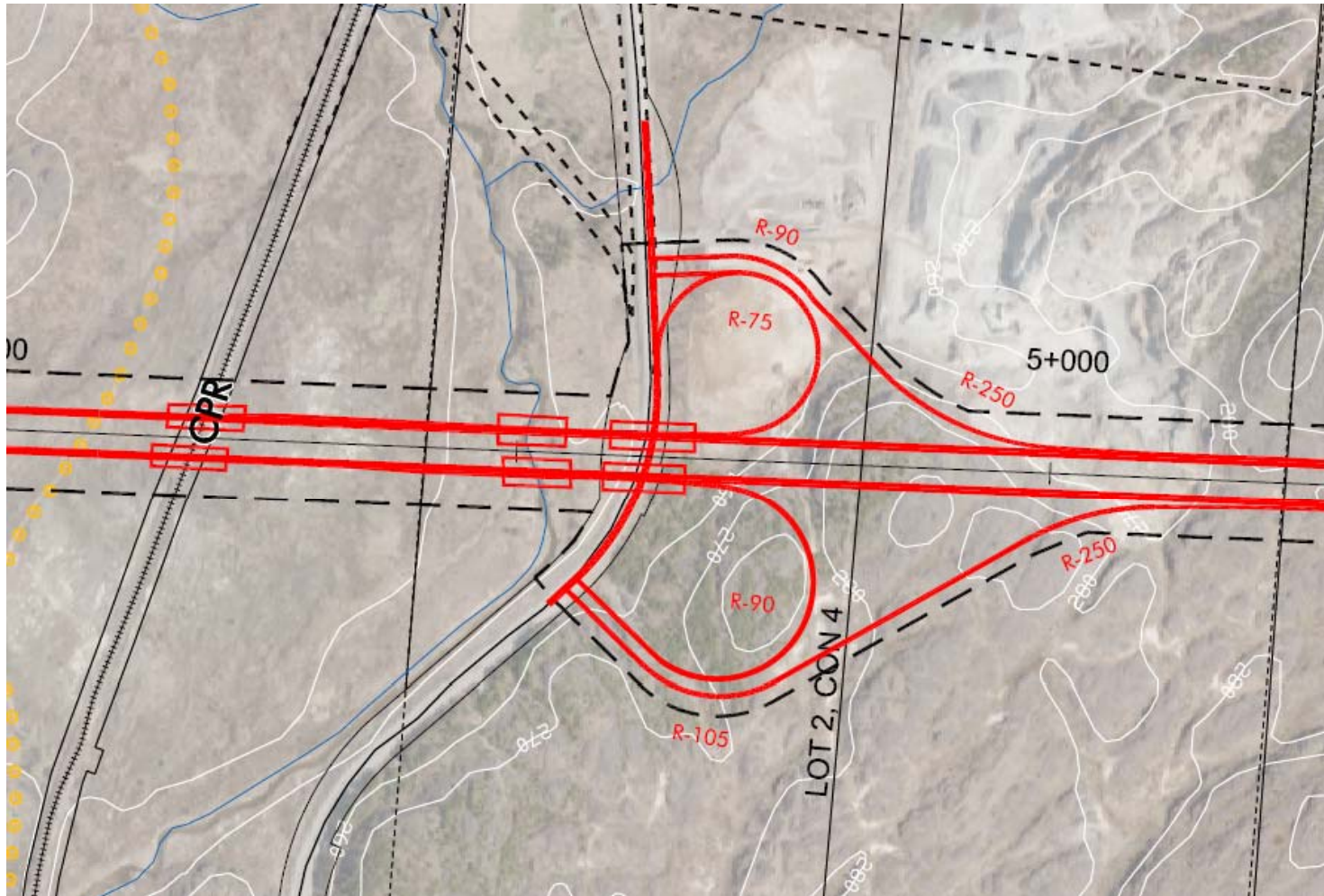
Highway 17 from Sudbury to Markstay  
GWP 5031-09-00





# Highway 17 Preferred Plan

Highway 17 from Sudbury to Markstay  
GWP 5031-09-00



## Highway 17 Preferred Plan (Southeast By-Pass)

Highway 17 from Sudbury to Markstay  
GWP 5031-09-00

The Preferred Plan was selected because...

- The existing SE By-pass will be utilized for the future westbound lanes
- The future eastbound lanes are located within property already designated and owned by the Ministry
- A wider median, located just west of Daisy Lake Uplands Provincial Park, minimizes impacts to a wetland area
- It does not directly impact the Lake Laurentian Conservation Area
- It accommodates the previously approved S-E ramp from Highway 69 to Highway 17



## Highway 17 Preferred Plan (Section B)

Highway 17 from Sudbury to Markstay  
GWP 5031-09-00

### The Preferred Plan was selected because...

- It is located relatively close to the existing highway, which provides reasonable access with minimal out-of-way travel
- It provides reasonable access to the City of Greater Sudbury with interchanges at SMR55 (Kingsway) and at Sudbury Municipal Road 90
- It minimizes the amount of private property required
- It avoids impacts to the Daisy Lake Uplands Provincial Park and an area of regulated Species at Risk habitat
- It minimizes the number of watercourse crossings and habitat fragmentation west of the Wanapitei River
- It provides a favourable crossing of the Wanapitei River
- It avoids an area of potentially contaminated property
- It is located where there are favourable foundation and geotechnical conditions

## Additional Benefits of the Preferred Plan

Highway 17 from Sudbury to Markstay  
GWP 5031-09-00

- The removal of the existing at-grade intersections and entrances on Highway 17 will significantly improve highway safety and traffic operations through the study area
- All railway crossings on Highway 17 will be grade separated
- The existing Highway 17 will remain as a secondary road, which will provide a parallel route for pedestrians, cyclists, and local traffic, and emergency service vehicles
- The existing Highway 17 will remain as a secondary road, which will provide a parallel Emergency Detour Route

## NOTICE OF PUBLIC INFORMATION CENTRE 3

### Route Planning Study, Highway 17 from Sudbury to Markstay (GWP 5031-09-00)

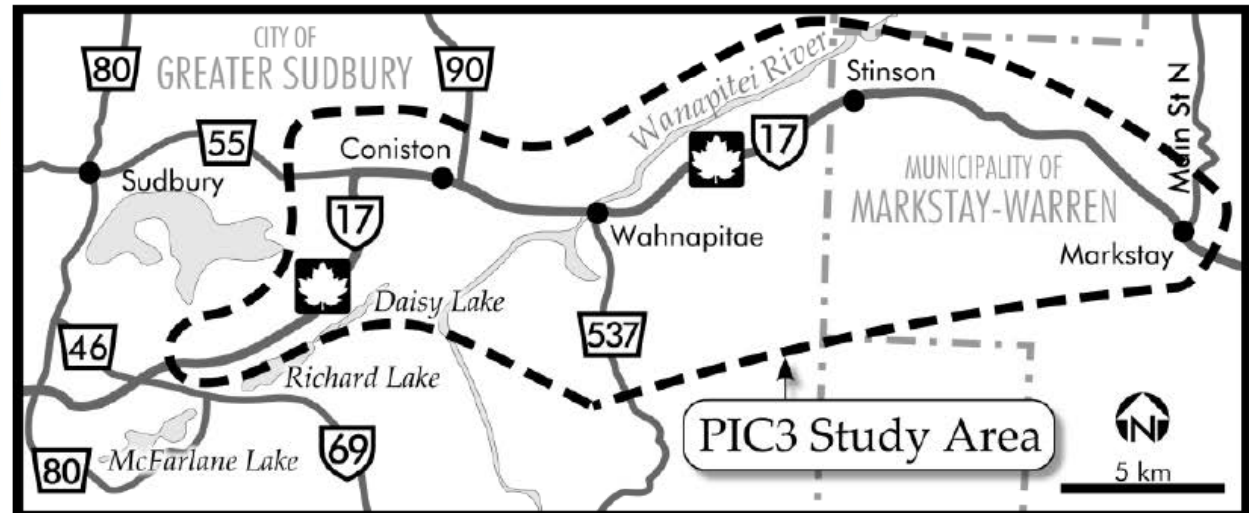
Stantec Consulting Ltd. has been retained by the Ministry of Transportation (MTO) to undertake a route planning, preliminary design, and environmental assessment study for Highway 17 from the existing Highway 69 interchange, easterly to Markstay, a distance of approximately 42.5 km. At the completion of the study, a preferred route will be selected and designated (protected).

Although this study initially included Highway 69 from Estaire Road to Highway 17 (McFarlane-Richard Lake Flats/Daisy Lake area), the Highway 69 component is being carried forward as a separate study. Separate public meetings and reports will be completed for the Highway 69 component of the study.

Route Alternatives for Highway 17 were presented at Public Information Centre 2 (PIC 2) in February 2012. This notice is to announce the third Public Information Centre (PIC) to present the Preferred Plan for the Highway 17 study area.

The purpose of PIC 3 is to:

- Display and seek input on the Highway 17 Preferred Plan
- Display the results of the evaluation process that led to the selection of the Preferred Plan
- Answer questions about the study



The Public Information Centre will be a drop-in format. Members of the project team will be available to answer questions about the study. The PICs are scheduled for:

**Tuesday, April 16, 2013**  
 Colonial Inn  
 28 Cedar Street, Coniston  
 4:00 PM to 7:00 PM

**Wednesday, April 17, 2013**  
 Markstay Pentecostal Church Hall  
 12 Millechamp Street, Markstay  
 4:00 PM to 7:00 PM

## Discussion

Highway 17 from Sudbury to Markstay  
GWP 5031-09-00

- Questions ???