

Route Planning and Environmental Assessment Study

Highway 144, from Chelmsford to Dowling

GWP 5023-09-00

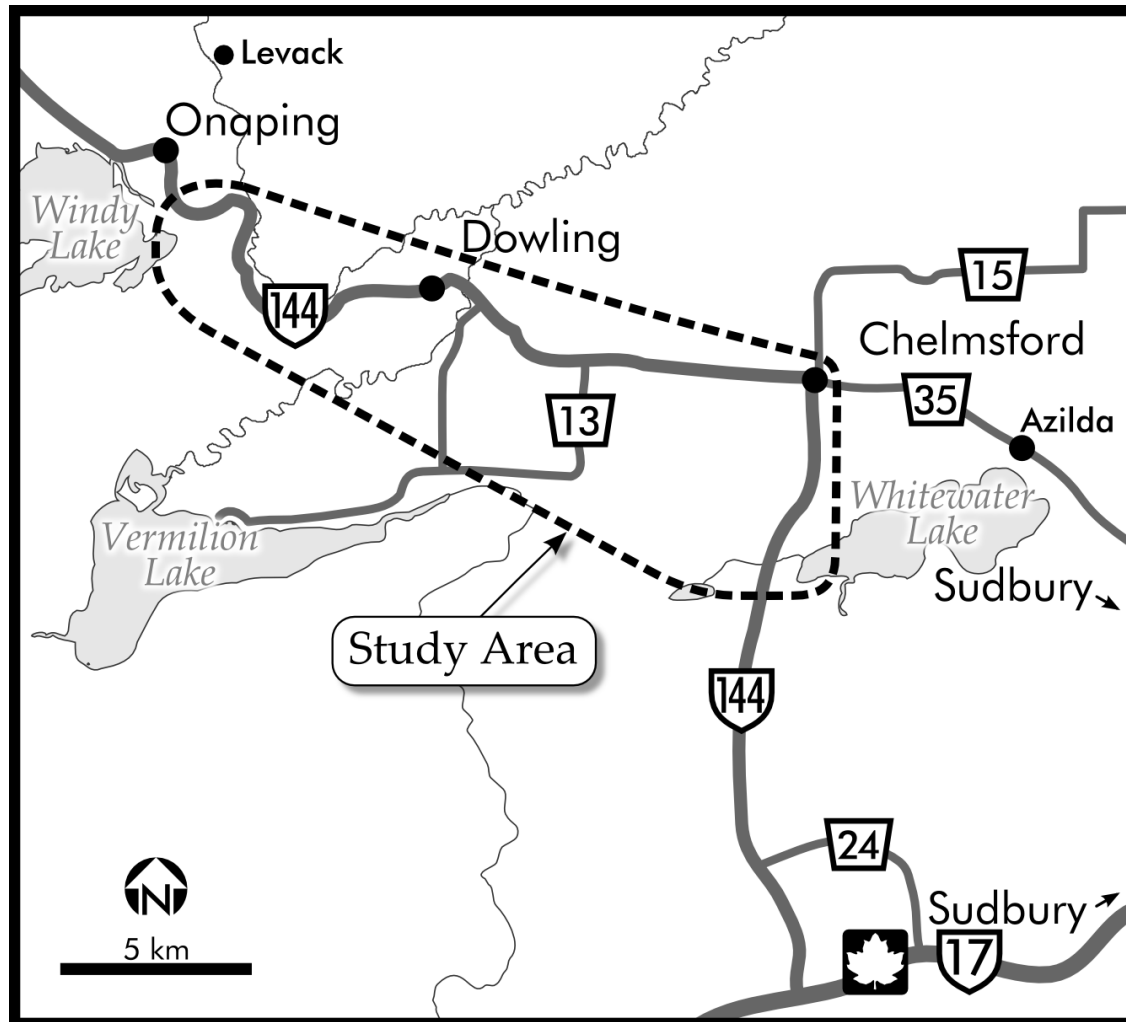
Presentation to CGS Operations Committee: January 21, 2013

One Team. Infinite Solutions



Study Area Plan

Highway 144 Route Planning and Environmental Assessment Study
from Chelmsford to Dowling, GWP 5023-09-00



Study Purpose

Highway 144 Route Planning and Environmental Assessment Study
from Chelmsford to Dowling, GWP 5023-09-00

- The purpose of this study is to identify and designate property for a future Controlled Access Highway for Highway 144 between Chelmsford and Dowling
- This is a long-range planning study to identify and designate property for the ultimate Highway 144 transportation needs
- Construction timing has not been determined and there is no funding committed to the project

Public Consultation

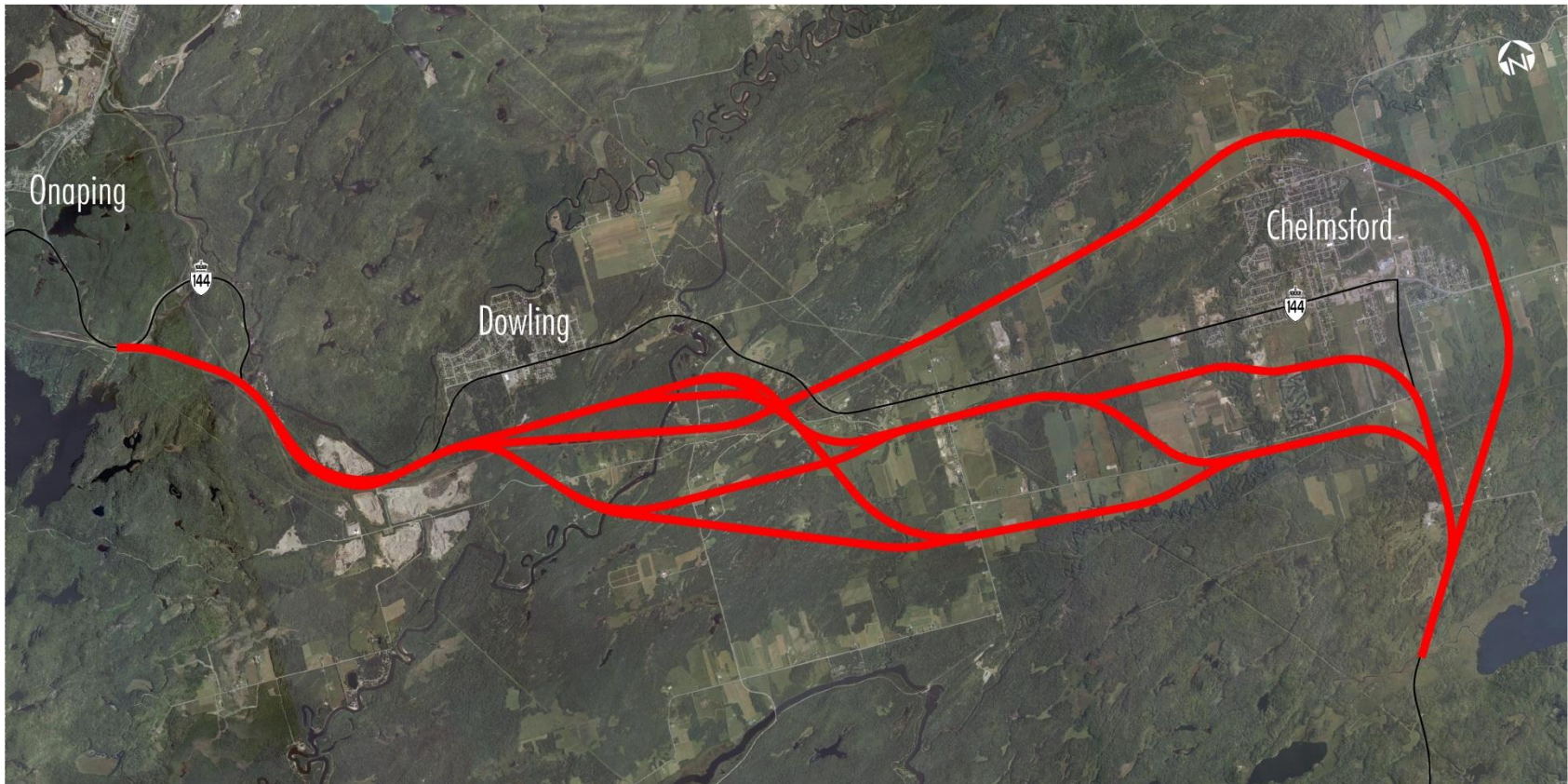
Highway 144 Route Planning and Environmental Assessment Study
from Chelmsford to Dowling, GWP 5023-09-00

- Public Information Centre 1 – September 22, 2010
 - » Present and seek input on the Highway 144 Corridor Alternatives
- Public Information Centre 2 – November 24, 2011
 - » Present and seek input on the Feasible Route Alternatives
- Public Information Centre 3 – September 18, 2012
 - » Present and seek input on the two route alternatives being carried forward for further study; and the possible interim alternatives
- Public Information Centre 4 – January 22, 2013
 - » Present and seek input on the Preferred Plan
- Transportation Environmental Study Report – Spring 2013
 - » 30-day Public Review Period

 We are Here

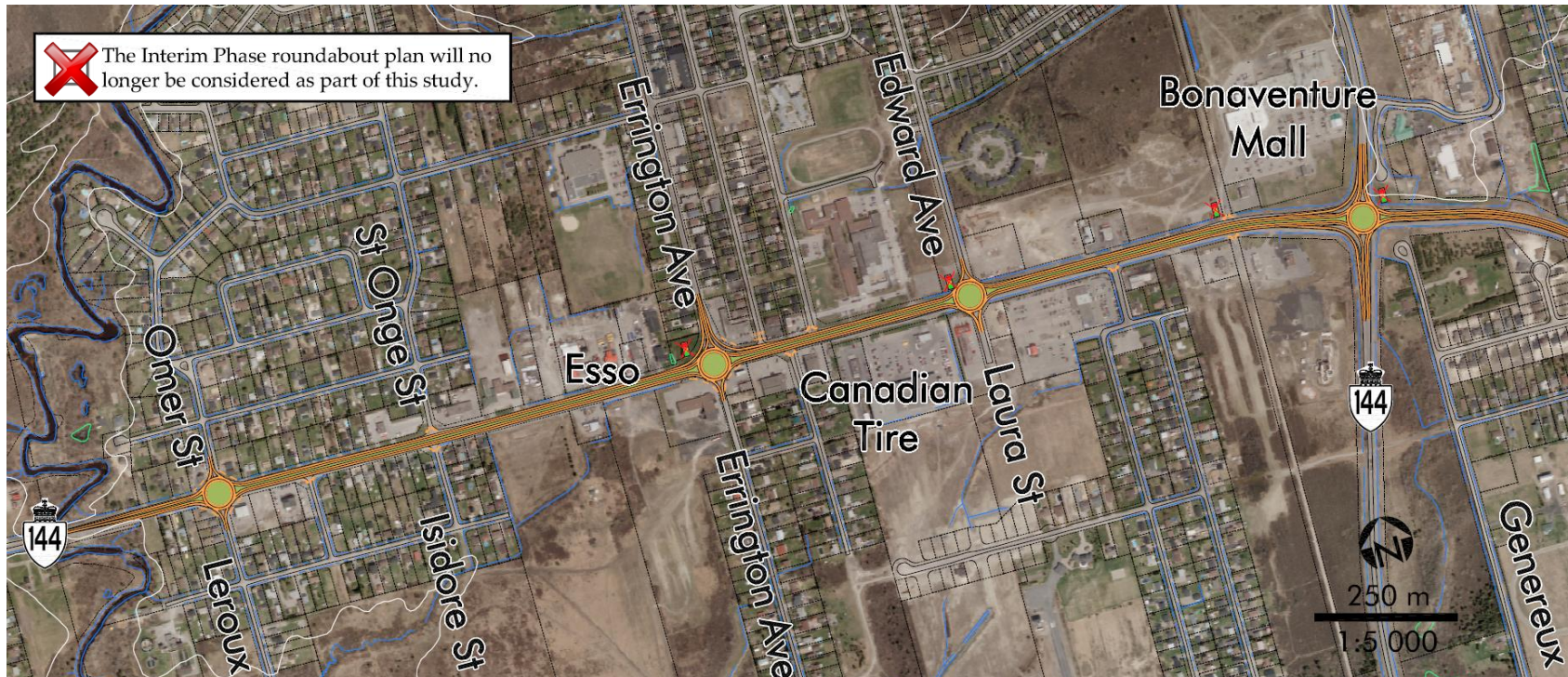
Highway 144 Route Alternatives

Highway 144 Route Planning and Environmental Assessment Study
from Chelmsford to Dowling, GWP 5023-09-00



Possible Interim Roundabout Plan

Highway 144 Route Planning and Environmental Assessment Study
from Chelmsford to Dowling, GWP 5023-09-00



Early in the study, the local business community requested improvements to existing Highway 144 through Chelmsford to defer the need for a by-pass. The project team subsequently developed a possible interim roundabout plan that was presented to the public and the business owners for consideration. However, the plan was not fully supported by the local business community and residents due to the associated access restrictions. The roundabouts were also not supported by the local trucking industry.

Preferred Plan

Highway 144 Route Planning and Environmental Assessment Study
from Chelmsford to Dowling, GWP 5023-09-00



Preferred Plan

Highway 144 Route Planning and Environmental Assessment Study
from Chelmsford to Dowling, GWP 5023-09-00

HIGHWAY 144 ROUTE PLANNING STUDY

FROM CHELMSFORD TO DOWLING
GWP 5023-09-00
JANUARY 2013



The Preferred Plan was selected because...

Highway 144 Route Planning and Environmental Assessment Study
from Chelmsford to Dowling, GWP 5023-09-00

- It is located relatively close to the existing highway, which provides reasonable access to the highway with minimal out-of-way travel
- It can be constructed in phases to address highway safety and operational needs when required in the future
 - » Phase 1: Chelmsford By-Pass (2-lane highway)
 - » Phase 2: Dowling By-Pass (4-lane highway)
- It minimizes impacts to farmland and the Agricultural Reserve
- It is located where there are favourable foundation and geotechnical conditions
- It minimizes impacts to aggregate and mineral resources
- It has the lowest overall cost when compared to the other alternatives

Additional Benefits of the Preferred Plan

Highway 144 Route Planning and Environmental Assessment Study
from Chelmsford to Dowling, GWP 5023-09-00

- The removal of the existing at-grade intersections and entrances on Highway 144 will significantly improve highway safety and traffic operations through the study area
- A new highway corridor will provide an alternate route for higher speed provincial traffic and long-haul trucks, which will significantly improve safety within the communities of Chelmsford and Dowling
- A new highway corridor will provide an alternate route for local mining truck traffic, which will significantly improve safety within the communities of Chelmsford and Dowling
- Relocating Highway 144 outside of the communities could allow the City to control development along the existing highway
- Removing provincial traffic and local trucks from within Chelmsford and Dowling could provide opportunities to improve the character of these communities

NOTICE OF PUBLIC INFORMATION CENTRE 4

Highway 144 Route Planning Study from Chelmsford to Dowling

Stantec Consulting Ltd. has been retained by the Ministry of Transportation (MTO) to undertake a route planning, preliminary design, and environmental assessment study for Highway 144 from approximately 6 kilometres south of Chelmsford to approximately 8 kilometres west of Dowling, a distance of approximately 27 kilometres (GWP 5023-09-00). At the completion of the study, a preferred route will be selected and designated (protected).

Route alternatives and a possible interim roundabout plan were presented at Public Information Centre 2 (PIC 2) in November 2011. At PIC 3 the two route alternatives being carried forward for further study and possible interim alternatives were presented. This notice is to announce the fourth Public Information Centre (PIC 4).

The purpose of PIC 4 is to:

- Display and seek input on the Preferred Plan
- Display the results of the evaluation process that led to the selection of the Preferred Plan
- Answer questions about the study

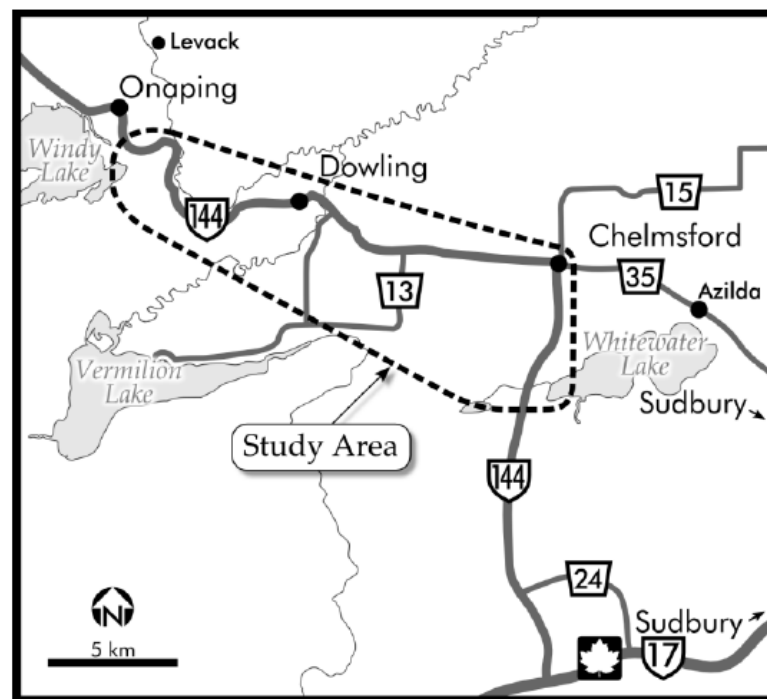
The Public Information Centre will be a drop-in format. The PIC is scheduled for:

Tuesday, January 22, 2013
 Club 50 de Rayside Balfour Hall
 25 Main Street West, Chelmsford
4:00 PM to 8:00 PM

THE PROCESS

This study is a "Group A" project under the *Class Environmental Assessment (EA) for Provincial Transportation Facilities* (2000). The fourth PIC is planned for early 2013 and will provide the public with an opportunity to review and comment on the Preferred Plan.

A Transportation Environmental Study Report (TESR) will be prepared and made available for public review at the end of the study. Notices will be placed in this newspaper to advise the public of the future PIC and the TESR public review period.



Discussion

Highway 144 Route Planning and Environmental Assessment Study
from Chelmsford to Dowling, GWP 5023-09-00

- Questions ???