

Presented To: Operations Committee

Presented: Monday, Oct 21, 2019

Report Date: Friday, Sep 27, 2019

Type: Managers' Reports

Request for Decision

Parking Restrictions - Morgan Road, Chelmsford

Resolution

THAT the City of Greater Sudbury prohibits parking on the north side of Morgan Road from 100 metres east of Nickel Offset Road to 500 metres east of Nickel Offset Road;

AND THAT staff be directed to prepare a by-law to amend Traffic and Parking By-Law 2010-1 to implement the recommended changes, as outlined in the report entitled "Parking Restrictions – Morgan Road, Chelmsford", from the General Manager of Growth and Infrastructure, presented at the Operations Committee meeting on October 21, 2019.

Relationship to the Strategic Plan / Health Impact Assessment

This report refers to operational matters.

Report Summary

Transportation and Innovation Services staff received a request to restrict parking on Morgan Road between Nickel Offset Road and Fire Route E due to motorists parking on both sides of the road to access a beach along the Vermilion River and the increase in farm equipment travelling on the road. This report recommends parking restrictions on Morgan Road, Chelmsford.

Financial Implications

Recommendations of this report may be carried out within existing approved budget and staff complement.

Signed By

Report Prepared By

Ryan Purdy
Traffic and Transportation Engineering
Analyst
Digitally Signed Sep 27, 19

Manager Review

Joe Rocca
Traffic and Asset Management
Supervisor
Digitally Signed Sep 27, 19

Division Review

Akli Ben-Anteur
Project Engineer
Digitally Signed Sep 27, 19

Financial Implications

Liisa Lenz
Coordinator of Budgets
Digitally Signed Oct 2, 19

Recommended by the Department

Tony Cecutti
General Manager of Growth and
Infrastructure
Digitally Signed Oct 4, 19

Recommended by the C.A.O.

Ed Archer
Chief Administrative Officer
Digitally Signed Oct 4, 19

Parking Restrictions – Morgan Road, Chelmsford

Transportation and Innovation Services staff received a request to restrict parking on Morgan Road between Nickel Offset Road and Fire Route E due to motorists parking on both sides of the road to access a beach along the Vermilion River.

The section of Morgan Road under review is located between Nickel Offset Road and Fire Route E (see Figure 1 below). This surface treated residential roadway has an operating width of 7 metres with gravel shoulders.

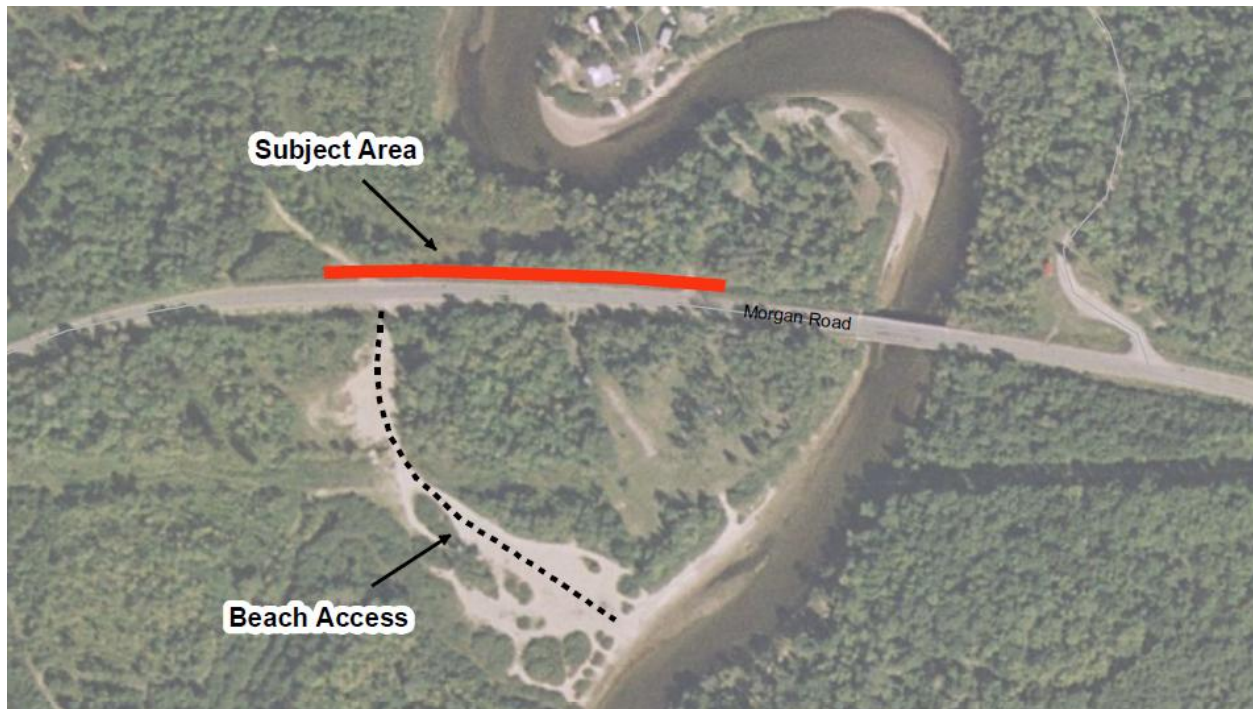


Figure 1

In the middle of the subject area there is an access point on the south side of Morgan Road that is used to reach a beach on the Vermilion River. This beach is on private property.

The primary function of a public road is for the safe and efficient movement of people and goods. On-street parking is usually permitted when this criteria is met. In this case, when vehicles are parked on both sides of Morgan Road it becomes difficult for vehicles to travel through that section of the roadway and restricts access to abutting properties. In addition, there has recently been an increase in commercial farming in the area and a subsequent increase in farming equipment travelling on the road between farming sites. At times these farm vehicles are unable to travel through this portion of Morgan Road when vehicles are parked on both sides.

To improve safety and the road functions, it is recommended that parking be prohibited along the north side of Morgan Road from 100 metres east of Nickel Offset Road to 500 metres east of Nickel Offset Road.