

Parking Restrictions – Morgan Road, Chelmsford

Transportation and Innovation Services staff received a request to restrict parking on Morgan Road between Nickel Offset Road and Fire Route E due to motorists parking on both sides of the road to access a beach along the Vermilion River.

The section of Morgan Road under review is located between Nickel Offset Road and Fire Route E (see Figure 1 below). This surface treated residential roadway has an operating width of 7 metres with gravel shoulders.

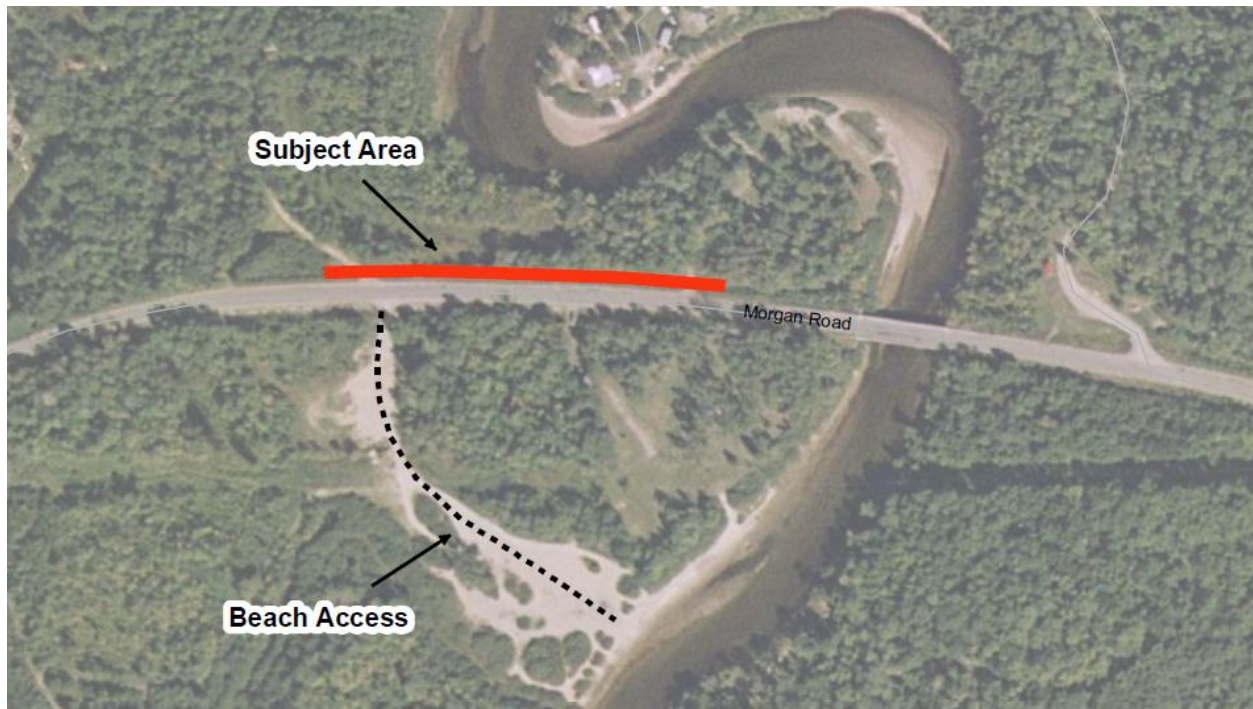


Figure 1

In the middle of the subject area there is an access point on the south side of Morgan Road that is used to reach a beach on the Vermilion River. This beach is on private property.

The primary function of a public road is for the safe and efficient movement of people and goods. On-street parking is usually permitted when this criteria is met. In this case, when vehicles are parked on both sides of Morgan Road it becomes difficult for vehicles to travel through that section of the roadway and restricts access to abutting properties. In addition, there has recently been an increase in commercial farming in the area and a subsequent increase in farming equipment travelling on the road between farming sites. At times these farm vehicles are unable to travel through this portion of Morgan Road when vehicles are parked on both sides.

To improve safety and the road functions, it is recommended that parking be prohibited along the north side of Morgan Road from 100 metres east of Nickel Offset Road to 500 metres east of Nickel Offset Road.