



Impact of Dementia on Communities

Business Case

Société Alzheimer Society Sudbury- Manitoulin

Lorraine LeBlanc, Executive Director

Serge Treherne, President

Marc Bertrand, Past President

AlzheimerSociety
ONTARIO



Challenge and an Opportunity

- 14.6% of Canadians are 65 and older, yet account for nearly half of all health and social care spending (Census, 2011).
- Canada's older population is set to double over the next twenty years, while its 85 and older population is set to quadruple (Sinha, Healthcare Papers 2011).
- Canada's ageing population represents both a challenge and an opportunity.

**Are we ready to integrate these
challenges and opportunities within our
municipalities!**



Société Alzheimer Society **Sudbury-Manitoulin**

*Providing excellence of services
for 28 years in the City of Greater Sudbury*

Mission

- ✿ To alleviate the personal and social consequences of Alzheimer's disease and related dementia, to improve the quality of life for our clients, their families and caregivers.

Values:

- ✿ Person-Centered
- ✿ Dignity
- ✿ Accountability
- ✿ Partnership
- ✿ Leadership
- ✿ Excellence

AlzheimerSociety
ONTARIO



Société Alzheimer Society Sudbury-Manitoulin

ALZHEIMER FUNDRAISER: Host a coffee break



JOHN LAPPA The Sudbury Star

Gerald Chenier, of Champions for Dementia, and Lorraine LeBlanc, executive director of Societe Alzheimer Society Sudbury-Manitoulin, serve coffee to residents at Pioneer Manor to help launch the Alzheimer Coffee Break fundraising campaign on Thursday. The society is calling on residents to participate in the Sept. 15 event by hosting a coffee break to help raise funds for the organization. For more information or to register, call 705-560-0603.

- ✿ Provides services to 1,975 or more clients per year (persons with a diagnosis, caregivers, families and professional training).
- ✿ Collaborative practice with over 300 partner agencies, businesses
- ✿ Good government relations
- ✿ Recipient of the Healthy Community Recognition Award 2012
- ✿ Employs over 21 employees (14.6 FTE)
- ✿ Member in good standing of the Federations of Alzheimer Societies International (ASiO)



Facts about Dementia

- ✿ Dementia is a brain disorder characterized by impaired cognitive functioning
- ✿ It affects learning and memory, mood and behaviour, as well as the ability to conduct daily activities and high level functions such as management of other chronic conditions
- ✿ Degenerative brain illnesses, such as Alzheimer's disease, vascular dementia, frontotemporal lobe dementia and Lewy body disease lead to irreversible forms of dementia
- ✿ To date, there is no known cure or effective means by which to delay onset or progression

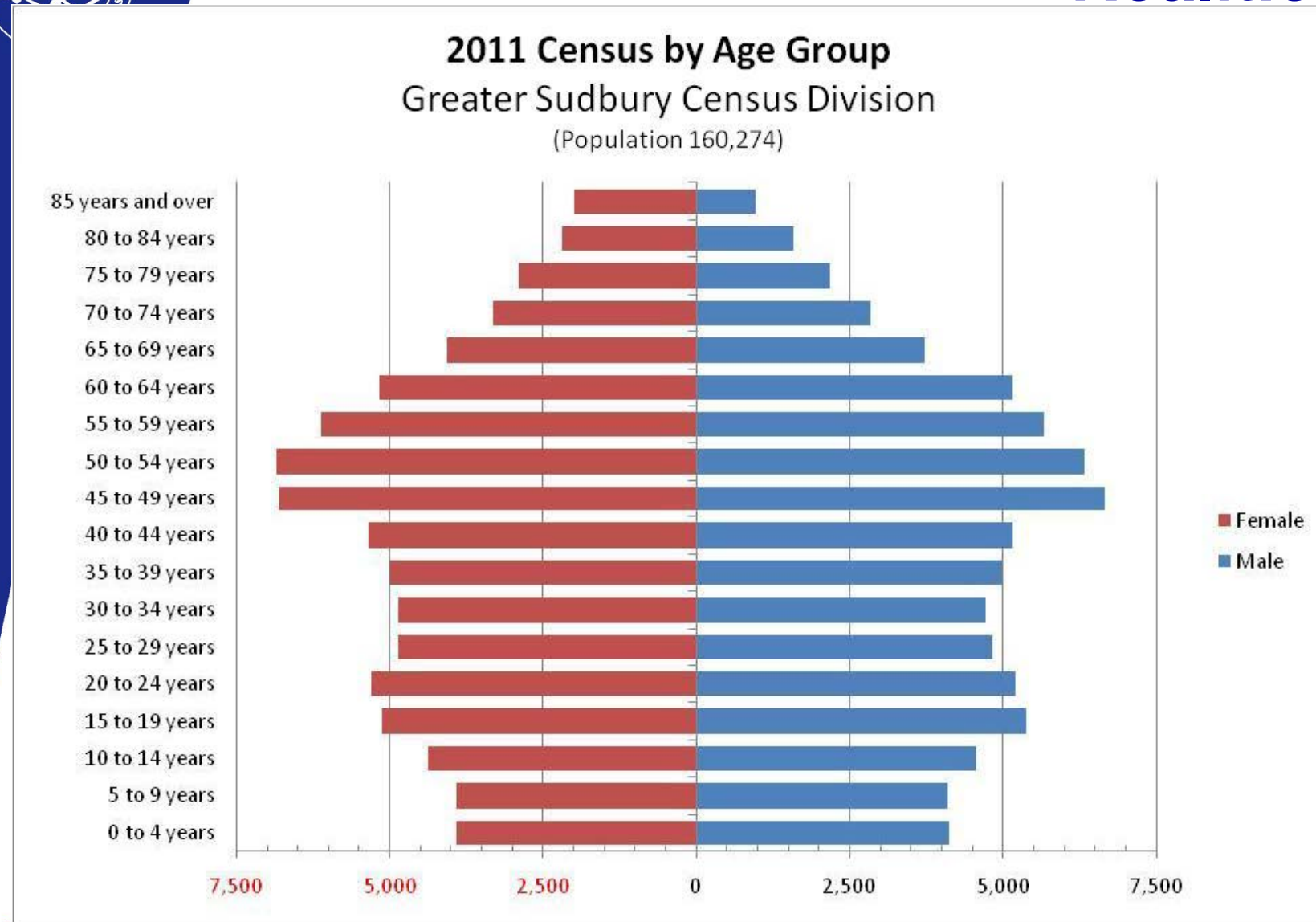


The burden of dementia can no longer be overlooked.

- ✿ Dementia is not a part of normal aging; it is a chronic, progressive and ultimately fatal disease.
- ✿ An estimated 2-10% of all cases actually start before the age of 65
- ✿ World Health Organization has declared dementia to be a “Public Health Priority” on a worldwide scale
- ✿ 2012 -Nearly 200,000 Ontarians over the age of 65—or one out of ten—are living with this disease
- ✿ By 2020, one quarter of a million seniors in Ontario will be living with dementia



Demographic and Socioeconomic Realities





Seniors with dementia are intensive users of health-care resources

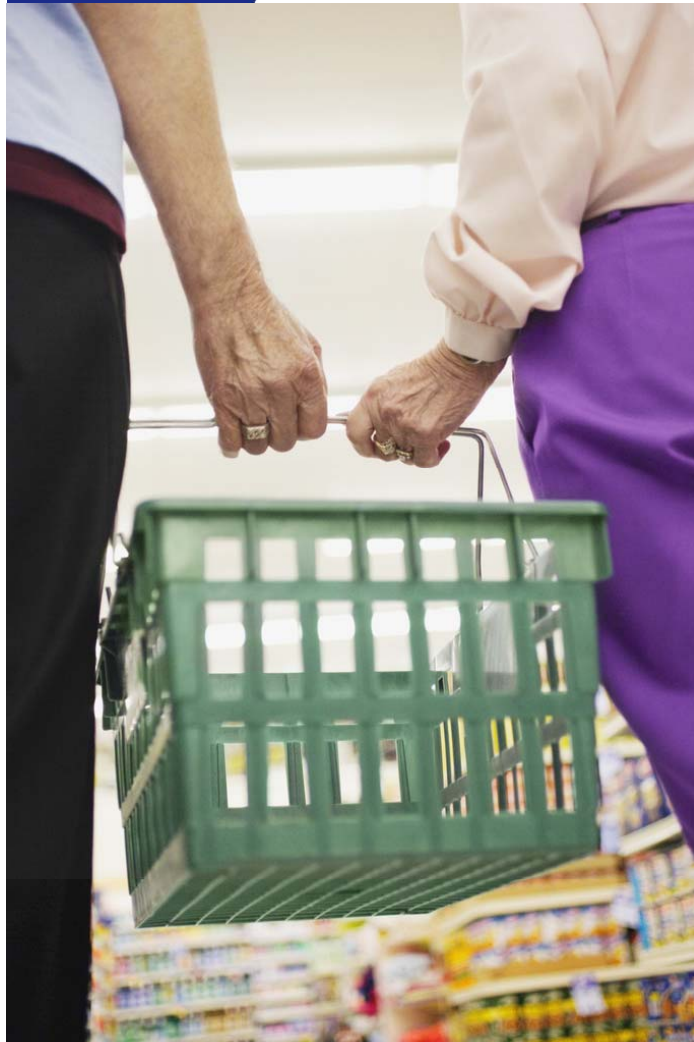
- Twice as likely to be hospitalized compared to seniors without the disease
- Twice as likely to visit emergency departments for potentially preventable conditions
- More than twice as likely to have alternate level of care days when hospitalized
- Nearly three times more likely to experience fall-related emergency room visits





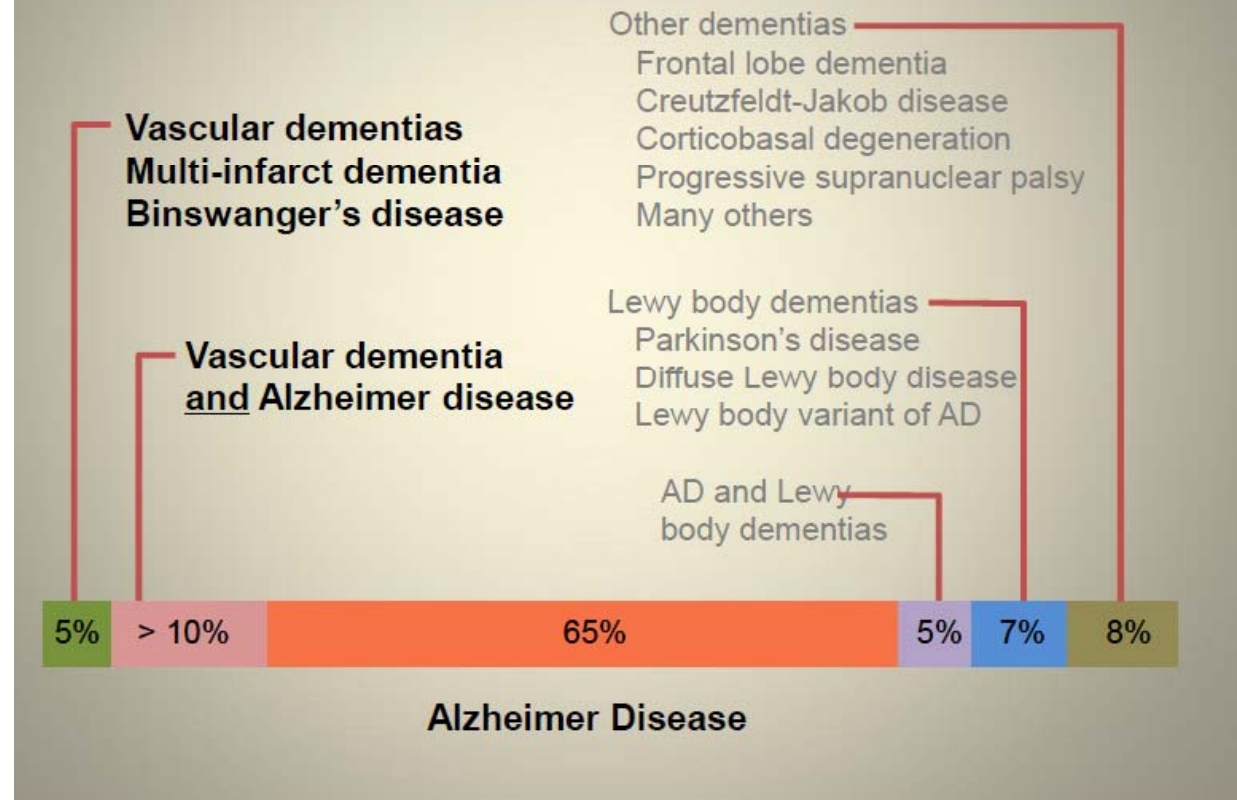
Evidence shows that people caring for someone with dementia

- ✿ Provide 75% more care hours than other caregivers
- ✿ Report feelings of distress, anger or depression, or inability to continue care – in one out of five cases
- ✿ 35% reported declines in general health; this rate increased to 60% among live-in caregivers
- ✿ 71% reported disruptions to employment
- ✿ 14% of those surveyed were forced to leave work or retire early





Differential Diagnosis of Dementia



New Data reinforces our need for knowledge of the brains capacity.

What is needed: Renewed investment in research,
Developing Dementia Strategies at all levels



And then there is Dementia...

- ✿ Upwards of 65% of Ontario's Long-Term Care residents have dementia. (ASO-ON 10 by 20 Brief)
- ✿ It is not an educational standard that Health and Social Care Professionals learn about geriatrics or dementia.
- ✿ Early Community Diagnosis and Intervention Services are not consistently well-linked with Primary Care Services and are inconsistent throughout our catchment



Dementia projections for Ontario LHINs²⁶

LHIN Region	2012	2016	2020	% Increase 2012-2016	% Increase 2012-2020
Erie St. Clair	10,640	11,960	13,260	12%	25%
South West	16,020	18,050	20,170	13%	26%
Waterloo Wellington	10,110	11,780	13,570	17%	34%
Hamilton Niagara Haldimand Brant	25,090	28,300	31,460	13%	25%
Central West	7,950	9,880	12,060	24%	52%
Mississauga Halton	13,340	16,210	19,350	22%	45%
Toronto Central	17,550	19,010	20,100	8%	15%
Central	23,320	28,220	33,330	21%	43%
Central East	24,590	28,590	32,740	16%	33%
South East	9,000	10,290	11,600	14%	29%
Champlain	18,360	21,000	23,950	14%	30%
North Simcoe Muskoka	7,570	8,880	10,340	17%	37%
North East	9,710	11,010	12,320	13%	27%
North West	3,850	4,220	4,600	10%	19%



Impact on future work force

An Ontario that is the Best Place to Grow Old
We will need to consider Caregivers...

- A 2010 study noted that for those receiving homecare, 98% are also getting help from a caregiver.
- Informal Caregiving is Stressful and Expensive.
- Caregiver Burden can take an enormous toll on a person's health and well being.
- Absenteeism – from taking time off work affects careers and lifetime earning potential and pensions
Duxbury et al. – Balancing Paid Work and Caregiving Responsibilities 2010



The Urgence for Collaborative Practice

- ✿ Given our current and future challenges Ontario's Action Plan for Health Care was launched in January, 2012 with a focus on quality, access, value and choice
- ✿ The Development of a Seniors Strategy was highlighted as a way to establish sustainable best practices and policies at a provincial level that could support the overall coordination of the delivery of health and social care services to decrease emergency, ALC and LTC admissions.
- ✿ The Société Alzheimer Society Sudbury-Manitoulin is actively preparing for the increase needs in community support services, health promotion and prevention programs to prolong the first stage and to assist those impacted by this devastating disease. We are actively collaborating with the local, provincial and national planning,



Ontario Alzheimer Societies

Alzheimer Chapters who pay property taxes in Ontario

- ✿ Majority of Chapters are exempt from their municipalities
- ✿ A very small percentage pay residential taxes
- ✿ 3 Chapters pay commercial property taxes and these own their building



Property taxes

Roll No. 030 004 00400 0000

Pioneer Manor

					Total Outstanding		
2010 Supplementary Tax Notice					Total Tax	Penalty Total	
	8-Mar-11	8-Apr-11					
Sud Alz	\$7,057.58	\$7,057.58			\$14,115.16	\$2,960.30	\$17,075.46
Total Supplemental Taxes Outstanding June 15, 2012							\$17,075.46
2011 Taxes					Total Tax	Total Penalty	
	8-Mar-11	8-Apr-11	8-Jun-11	8-Jul-11	Owing		
Sud Alz	\$3,676.00	\$3,676.43	\$3,671.00	\$3,670.53	\$14,693.98	\$2,755.39	\$17,449.37
2011 Taxes / Supps Outstanding as at July 19, 2012							\$34,524.84
Total 2012 taxes Billed							
	5-Mar-12	5-Apr-12	5-Jun-12	5-Jul-12	Total Taxes	Total Pen	Total Owing
Sud Alz	\$10,232.00	\$10,232.16	\$10,136.00	\$10,136.34	\$40,736.50	1,531.25	\$42,267.75
Total 2012 taxes					\$40,736.50		\$42,267.75
Total Outstanding balance at July 19, 2012							\$76,792.58



Tax comparison to other tenants

**Pioneer Manor
Roll 030.004.004
2012 INTERIM BILLING**

		CVA	TAX RATE	AMOUNT OWING	Due Mar 5	Due April 5
Total Interim Billing	XT	1,821,000	0.02102014	\$38,277.67	\$19,139.00	\$19,138.67

Tenant Breakdown

Alzheimer's Society	XT	973,550	0.02102014	\$20,464.16	\$10,232.00	\$10,232.16
City of Lakes FHT	XT	732,480	0.02102014	\$15,396.83	\$7,698.00	\$7,698.83
Dr St. Martin	XT	114,970	0.02102014	\$2,416.68	\$1,209.00	\$1,207.68
Totals	XT	1,821,000.00		\$38,277.67	\$19,139.00	\$19,138.67



The Dilemma

- ✿ This additional cost has an impact on our budget that may impact client services
- ✿ We have been operating in a small deficit for the last three years
- ✿ 25 % of our budget is fundraised dollars which comes from the city of Greater Sudbury residents
- ✿ These expenses were not anticipated
- ✿ This will impact health care services on emergency, ALC beds and LTC admission



Recommendation

- ✿ That the City of Greater Sudbury support the Society by providing us with a subsidy to offset the taxes
- ✿ Review our Lease Agreement between the City of Greater Sudbury and Alzheimer Society dated November 2, 2006 (article 5.1, 5.2) to exempt us of taxes so these funds can be put into programs



Bibliography

- ✿ North East Dementia Evidence Brief, Alzheimer Society of Ontario, August 2012
- ✿ Statistics Canada, Census 2011,
- ✿ Population Health Profile, Ontario Seniors Strategy, August 2012
- ✿ With Respect to Old Age: Can We Do Better?, Provincial Lead, Ontario's Seniors Care Strategy, Dr. Samir K. Sinha MD, DPhil, FRCPC
- ✿ Diabetes and Vascular Disease in Dementia– Causes, Treatment and Research, Dr. Jane Rylett, ASO, October 2012