

Route Planning and Environmental Assessment Study

Highway 17 from Sudbury to Markstay and

Highway 69 from the Estaire Road Interchange to Highway 17

GWP 5031-09-00

Presentation to CGS Operations Committee

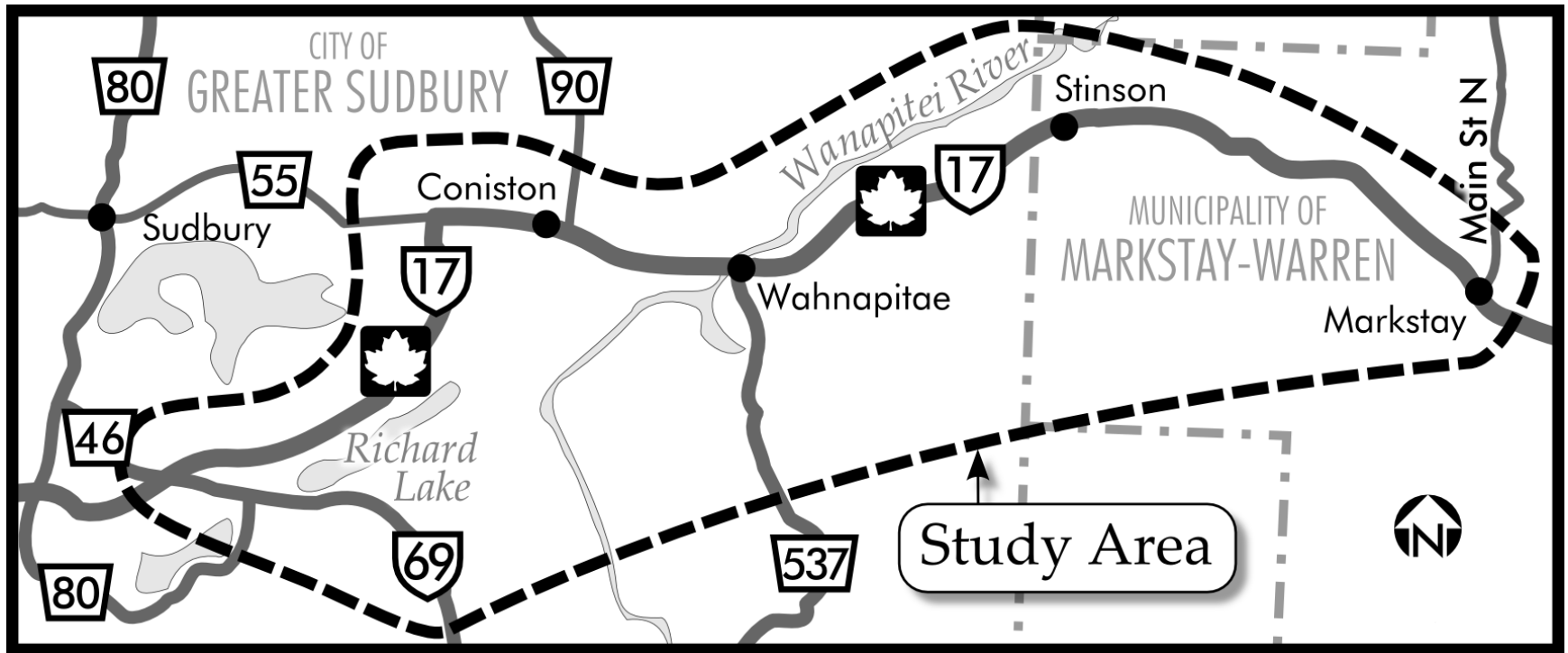
October 22, 2012

One Team. Infinite Solutions



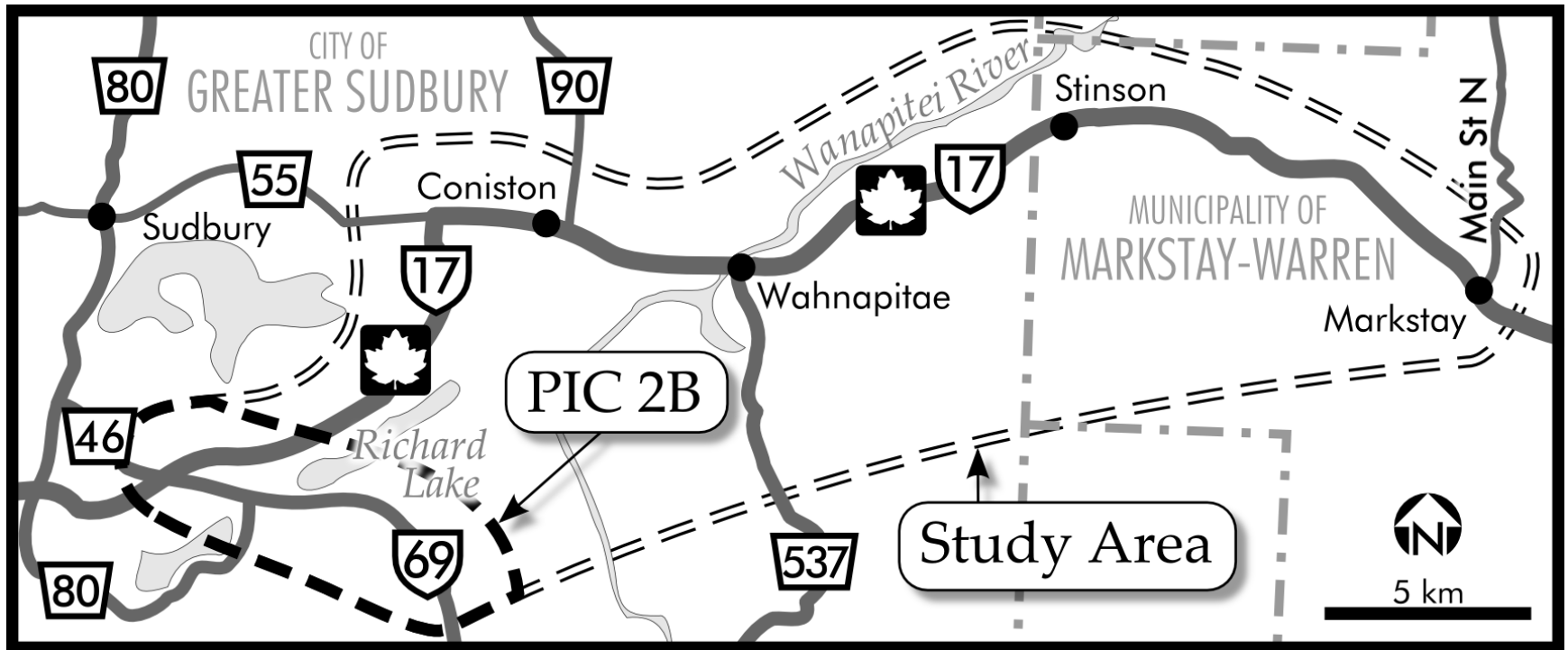
Study Area Plan

Highway 17 from Sudbury to Markstay and Highway 69 from the Estaire Road Interchange to Highway 17
GWP 5031-09-00



Study Area Plan

Highway 17 from Sudbury to Markstay and Highway 69 from the Estaire Road Interchange to Highway 17
GWP 5031-09-00



Study Purpose

Highway 17 from Sudbury to Markstay and Highway 69 from the Estaire Road Interchange to Highway 17
GWP 5031-09-00

- The purpose of the study is to identify a four-lane Controlled Access Highway, with access restricted to interchange locations only, for Highway 17 and Highway 69 within the study limits
- A four-lane divided Controlled Access Highway is the preferred standard for Highway 17 and Highway 69
- Four-laning will improve highway safety by:
 - » Separating opposing traffic with a wide median
 - » Providing safe passing opportunities without the risk of opposing traffic
 - » Removing potential vehicle conflicts associated with at-grade intersections and entrances

Public Consultation

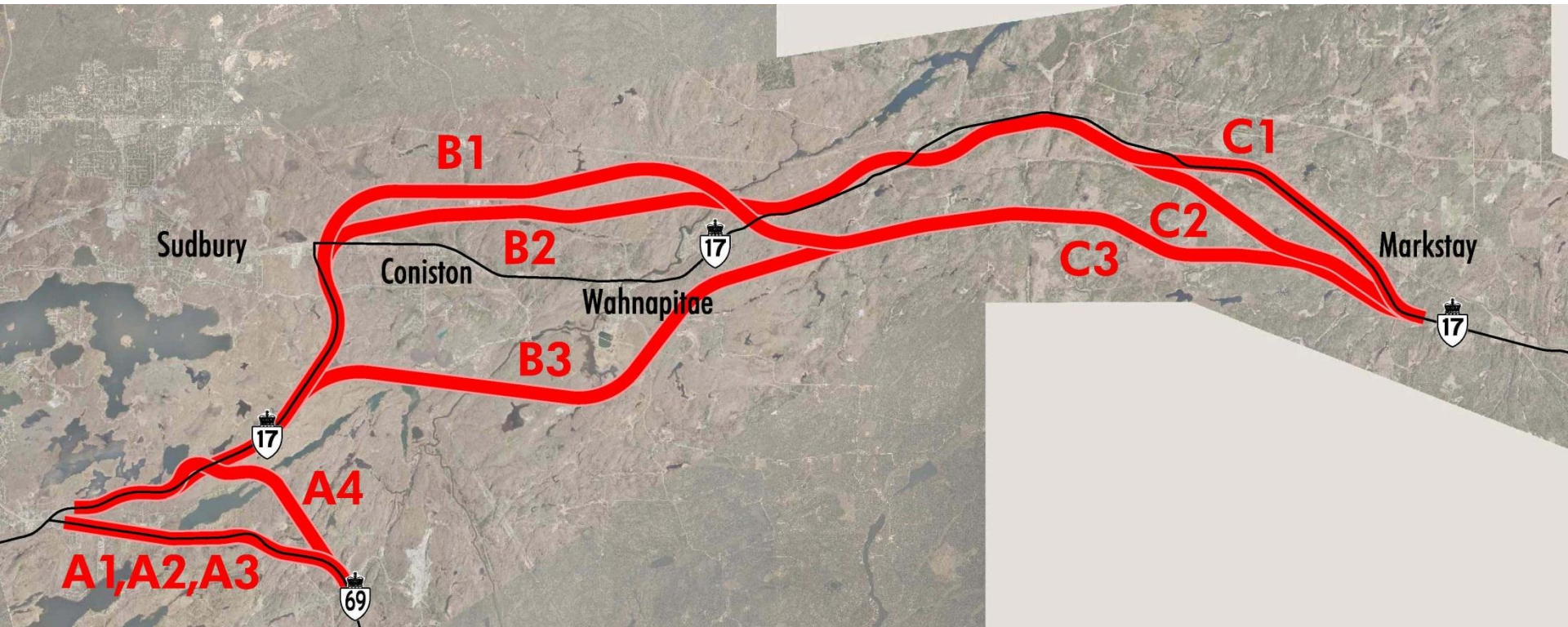
Highway 17 from Sudbury to Markstay and Highway 69 from the Estaire Road Interchange to Highway 17
GWP 5031-09-00

- Notice of Study Commencement – August 2010
- Public Information Centre 1 – February 2011
 - » Present and seek input on the Corridor Alternatives
- Public Information Centre 2 – February/March 2012
 - » Present and seek input on the Route Alternatives
- Public Information Centre 2B – October 23, 2012
 - » Present and seek input on two Highway 69 alternatives
- Public Information Centre 3 – Winter 2013
 - » Present and seek input on the Preferred Plan for Highway 69 and Highway 17
- Transportation Environmental Study Report – Summer 2013
 - » 30-day Public Review Period

← We are Here

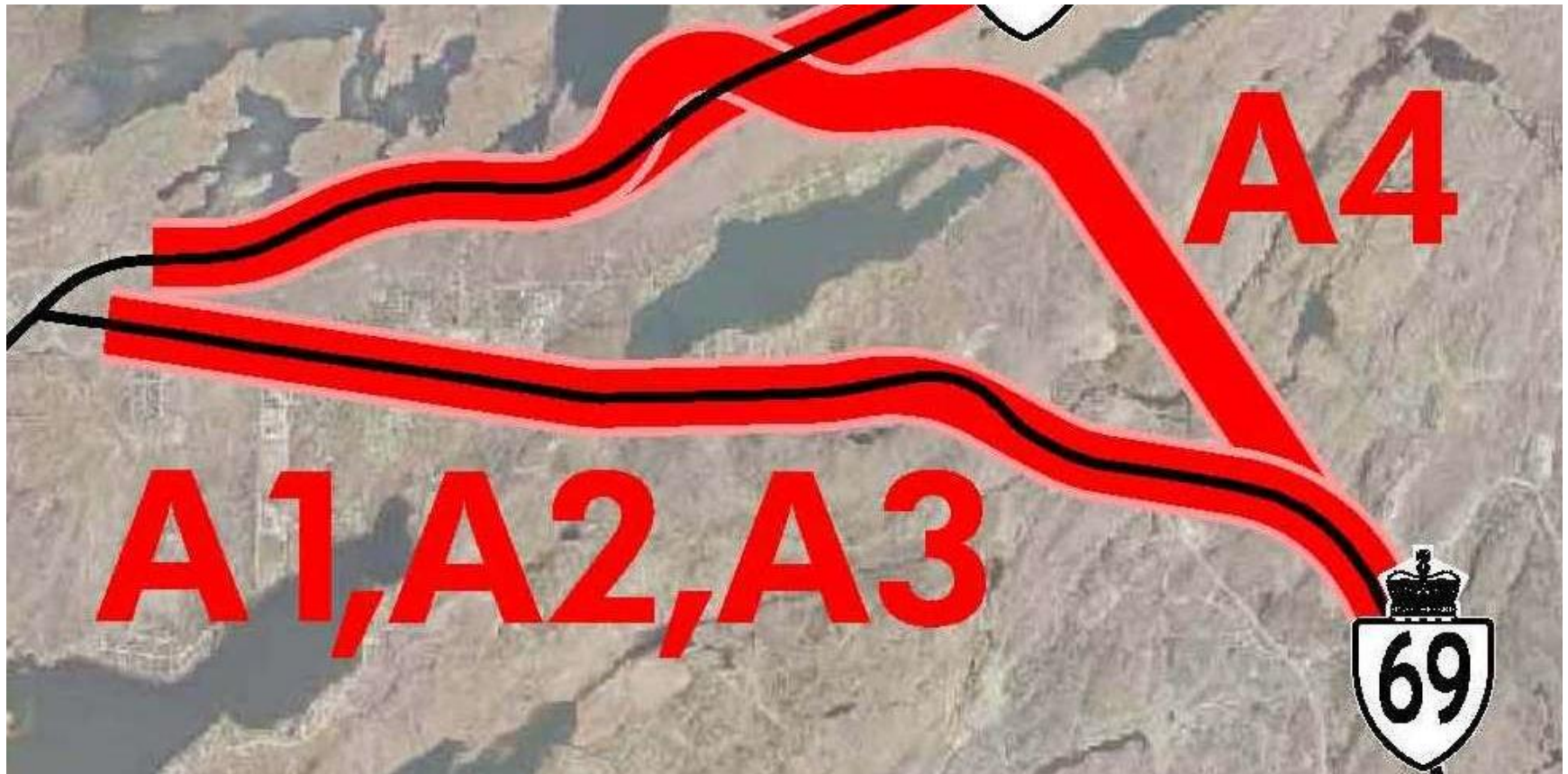
Route Alternatives (PIC 2)

Highway 17 from Sudbury to Markstay and Highway 69 from the Estaire Road Interchange to Highway 17
GWP 5031-09-00



Route Alternatives (PIC 2)

Highway 17 from Sudbury to Markstay and Highway 69 from the Estaire Road Interchange to Highway 17
GWP 5031-09-00



Route Alternatives (PIC 2)

Highway 17 from Sudbury to Markstay and Highway 69 from the Estaire Road Interchange to Highway 17
GWP 5031-09-00

- Alternative A1 is being carried forward for further evaluation because it has significantly fewer impacts to the natural environment and significant cost savings when compared to Alternative A4. It also has fewer impacts to the Richard Lake floodplain and the potential fish spawning area when compared to Alternative A2 and Alternative A3.
- Alternative A4 is not being carried for further evaluation because it has more significant impacts to the natural environment and a significant cost premium when compared to the other alternatives.

Route Alternatives (PIC 2B)

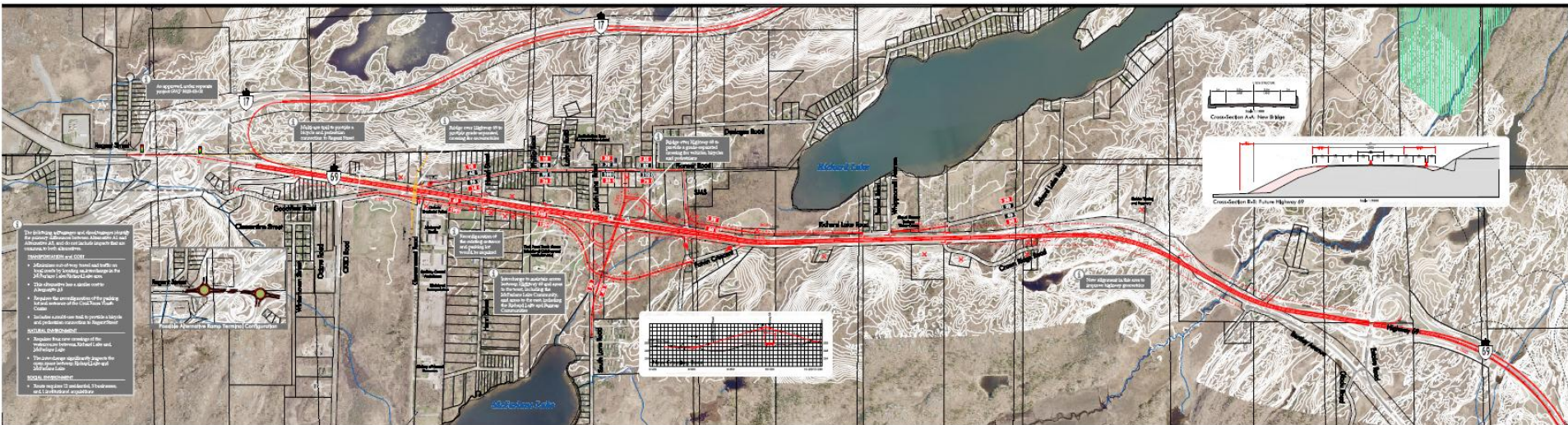
Highway 17 from Sudbury to Markstay and Highway 69 from the Estaire Road Interchange to Highway 17
GWP 5031-09-00

Alternative A1

LEGEND
— New Roadway
- - - New Right-of-Way
- - - Previous ATO Designation
X Property Request
-X Closure
[Red Box] Projected 2030 PM Peak Hour Traffic Volume
[Red Box] Projected 2030 AM Peak Hour Traffic Volume

200 m
1:4000

 Ontario
Public Information Centre 28
October 28, 2013

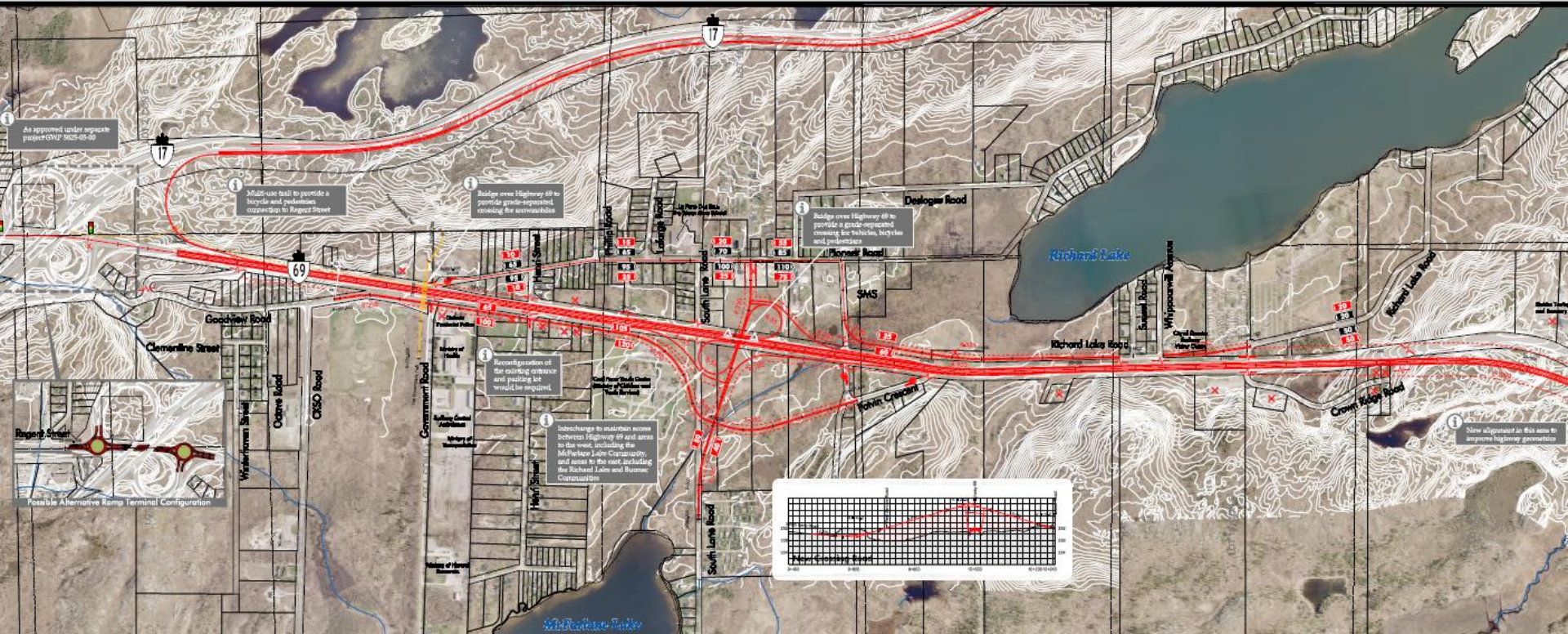


Route Alternatives (PIC 2B)

Highway 17 from Sudbury to Markstay and Highway 69 from the Estaire Road Interchange to Highway 17
GWP 5031-09-00

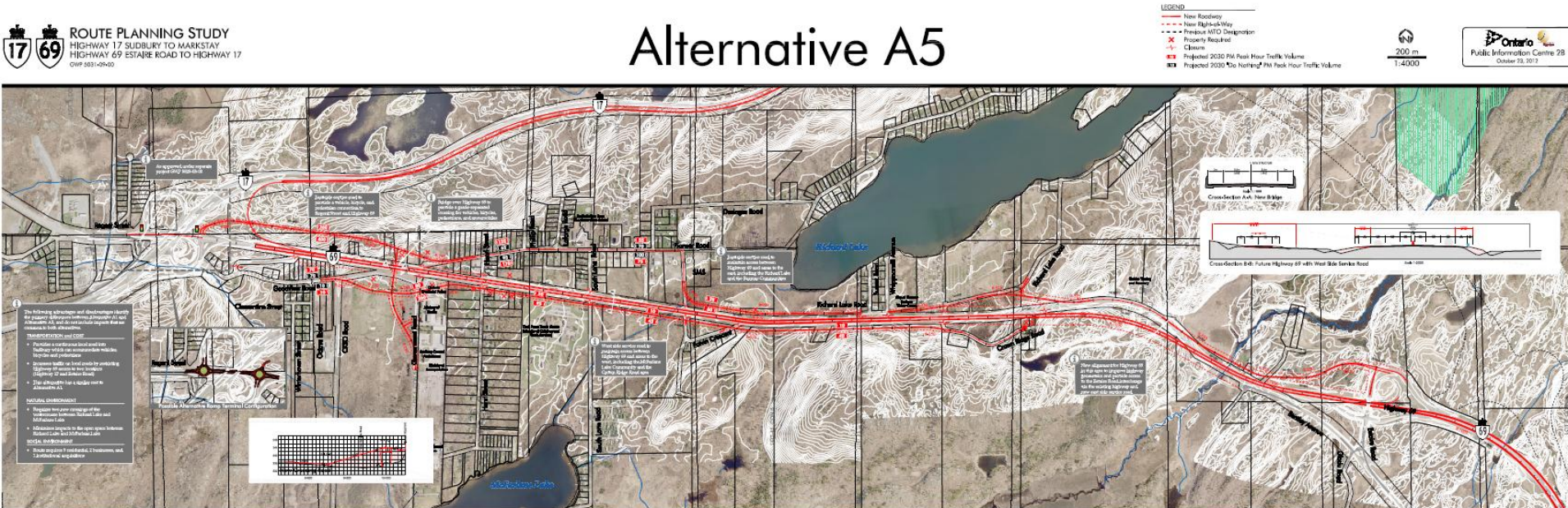
ANNING STUDY
BURY TO MARKSTAY
URE ROAD TO HIGHWAY 17

Alternative A1



Route Alternatives (PIC 2B)

Highway 17 from Sudbury to Markstay and Highway 69 from the Estaire Road Interchange to Highway 17
GWP 5031-09-00



Highway 17 from Sudbury to Markstay and Highway 69 from the Estaire Road Interchange to Highway 17
GWP 5031-09-00

Alternative A5

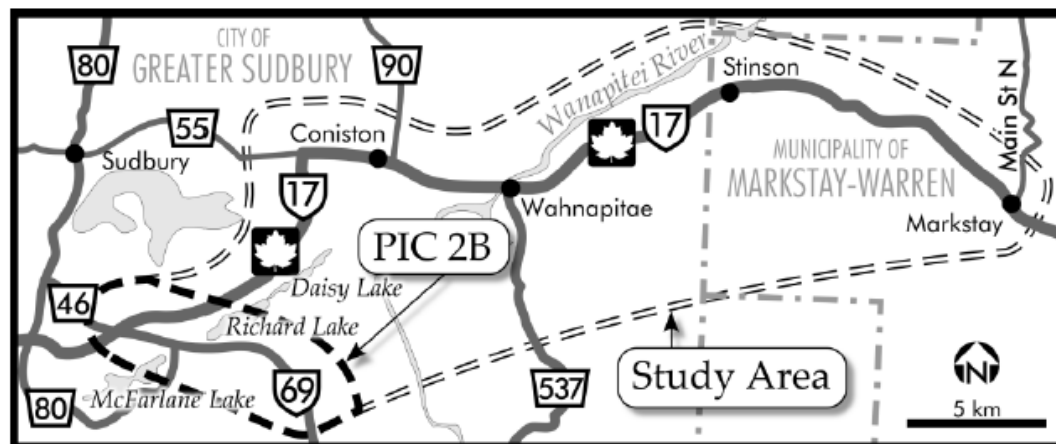


Stantec Consulting Ltd. has been retained by the Ministry of Transportation (MTO) to undertake a route planning, preliminary design, and environmental assessment study for Highway 17 from the existing Highway 69 interchange, easterly to Markstay, a distance of approximately 42.5 km; and for Highway 69 from the Estaire Road Interchange to Highway 17, a distance of approximately 6.2 km. At the completion of the study, a preferred route will be selected and designated (protected).

The second Public Information Centre (PIC) was held in February 2012 to provide the public with an opportunity to review the short-list of Route Alternatives. PIC 2B has been added to the study process to provide the preliminary results of the evaluation of Route Alternatives in the McFarlane – Richard Lake Flats / Daisy Lake Area and to present a new Alternative that was developed following consultation with the public. Following PIC 2B, the new Alternative (Alternative A5) will be evaluated to the same level of detail as the previously presented alternatives.

The purpose of PIC 2B is to:

- Display and seek input on the preliminary evaluation of the Highway 69 Route Alternatives presented at PIC 2
- Display and seek input on a new alternative to upgrade the existing Highway 69
- Display and seek additional input on the existing conditions in the study area (i.e. natural, social, economic, and cultural).
- Answer questions about the study



The Public Information Centre will be a drop-in format. Members of the project team will be available to answer questions about the study. The PIC is scheduled for:

Tuesday, October 23, 2012
Mine Mill Local 598 Hall
2550 Richard Lake Drive, Sudbury
4:00 PM to 8:00 PM

Discussion

Highway 17 from Sudbury to Markstay and Highway 69 from the Estaire Road Interchange to Highway 17
GWP 5031-09-00

- Questions ???