



# **CITY OF GREATER SUDBURY EMERGENCY MANAGEMENT PROGRAM**



# City of Greater Sudbury Community Flood Management Plan

## Background

- Greater Sudbury's "Hazard Identification and Risk Assessment" identifies flooding, both overland and urban, as a community hazard
- The plan has been developed to mitigate and respond to flooding hazards within municipal boundaries
- The plan supports the City's Emergency Response Plan

# City of Greater Sudbury Community Flood Management Plan

## NDCA

- Types of Floods:
  - Spring runoff; Severe Storms/Urban Flooding; Changing Climate scenarios
- Conservation Sudbury – NDCA
  - Flood Forecasting/Advisory/Co-ordination Responsibilities; Flood Control Capacity (dams, berms, reservoirs, box culverts)
- Monitoring station network; Snowcourse surveys;
- Information sharing with other agencies (ie. OPG, Water Survey of Canada, Environment Canada, etc.)

# City of Greater Sudbury Community Flood Management Plan

## NDCA

- NDCA communications strategies/priorities
- Municipal departments; decision-makers; school children; general public; media
- Private property owner assistance capacity/challenges



# City of Greater Sudbury Community Flood Management Plan

## NDCA

- Municipal Response roles and responsibilities (mandated/discretionary)
- NDCA/City/Other partners collaboration
- Annual Spring runoff preparation meeting



# City of Greater Sudbury Community Flood Management Plan

## Plan Benefits

- Unifies City Departments and partner agencies in a consistent communication and response strategy before, during and after a flood
- Outlines the procedures to be utilized to minimize the effects of a flood
- Defines the roles and responsibilities of City Departments and partner agencies

# City of Greater Sudbury Community Flood Management Plan

## Plan Activation

- Community Flood Management Standard Operating Procedure

## Supporting Documents

- Corporate Early Notification Protocol
- Neighbourhood Level Emergency Evacuation Protocol
- Departmental Response Plans

# City of Greater Sudbury Community Flood Management Plan

## Plan Assumptions

- City: primary responsibility for flood response
- City and partners: follow response activities (Emergency Response Plan, Community Flood Management Plan & Departmental Operating Procedures)
- NDCA: watershed conditions statements
- Residents: active measures to protect personal property



# City of Greater Sudbury Community Flood Management Plan

## Plan Limitations

- Response will focus on the protection of critical infrastructure to ensure the continuity of municipal services
- Response may be impacted by impassable roads, communication disruptions, utility failures, etc.
- Response to flooding will vary depending on the cause of flooding

# City of Greater Sudbury Community Flood Management Plan

## Protection of Private Property

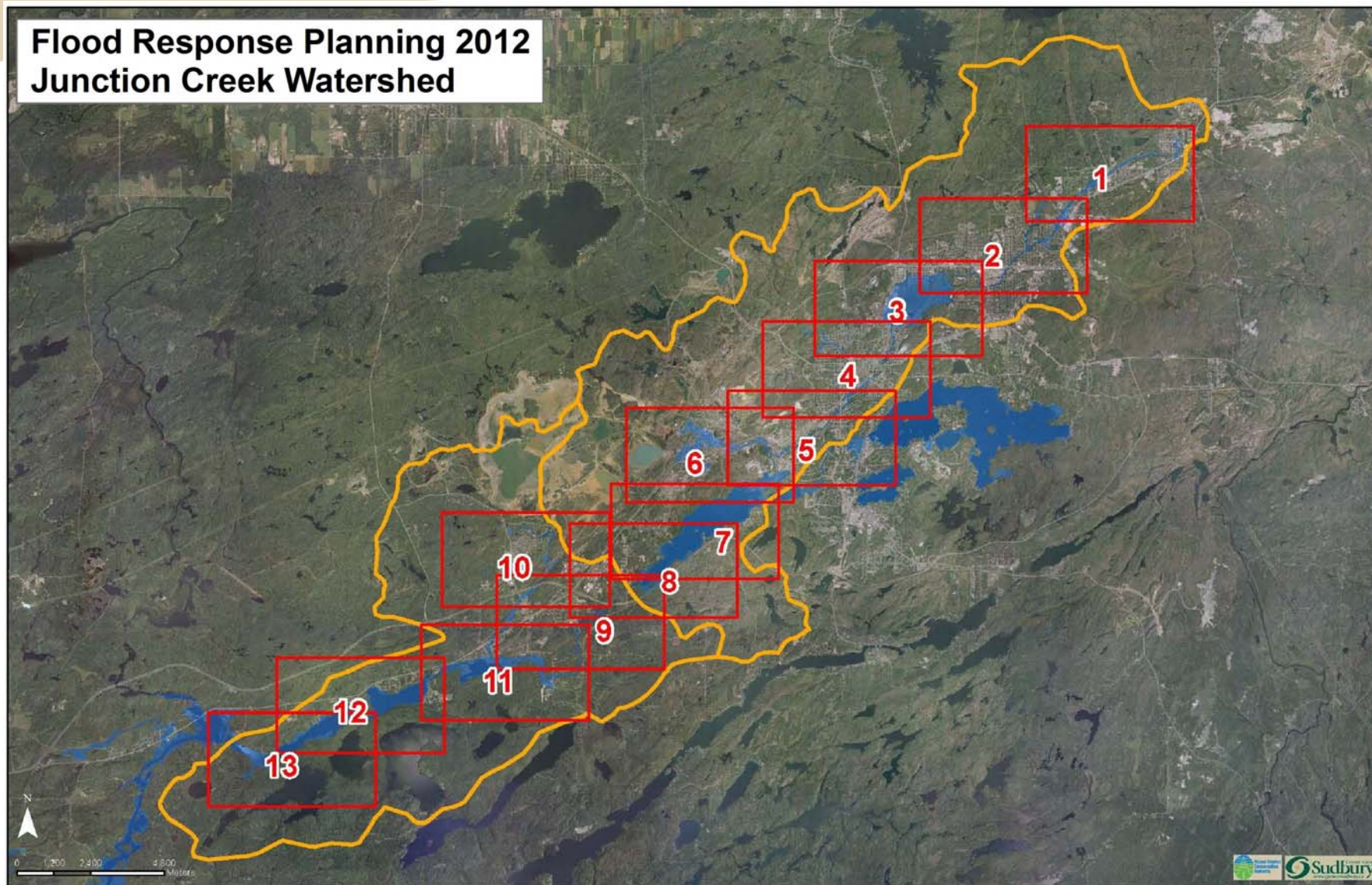
- The planning process identified a need for a corporate policy for the protection of private property
  - We do not protect private property
  - We will provide sand & sandbags if resources are available
- Report to Council with options for consideration

# City of Greater Sudbury Community Flood Management Plan

## Emergency Information for Residents

- Flood Preparedness
  - Before (preventative measures)
  - During (personal safety, property protection)
  - After (clean up, community support networks)
- Delivery Methods
  - Media (TV, radio)
  - Social media (Facebook, Twitter)
  - Websites (City, NDCA, SDHU, etc)

## Flood Response Planning 2012 Junction Creek Watershed



**Always Prepared.**  
**Toujours prêts.**



Emergency Preparedness    Préparation aux situations d'urgence

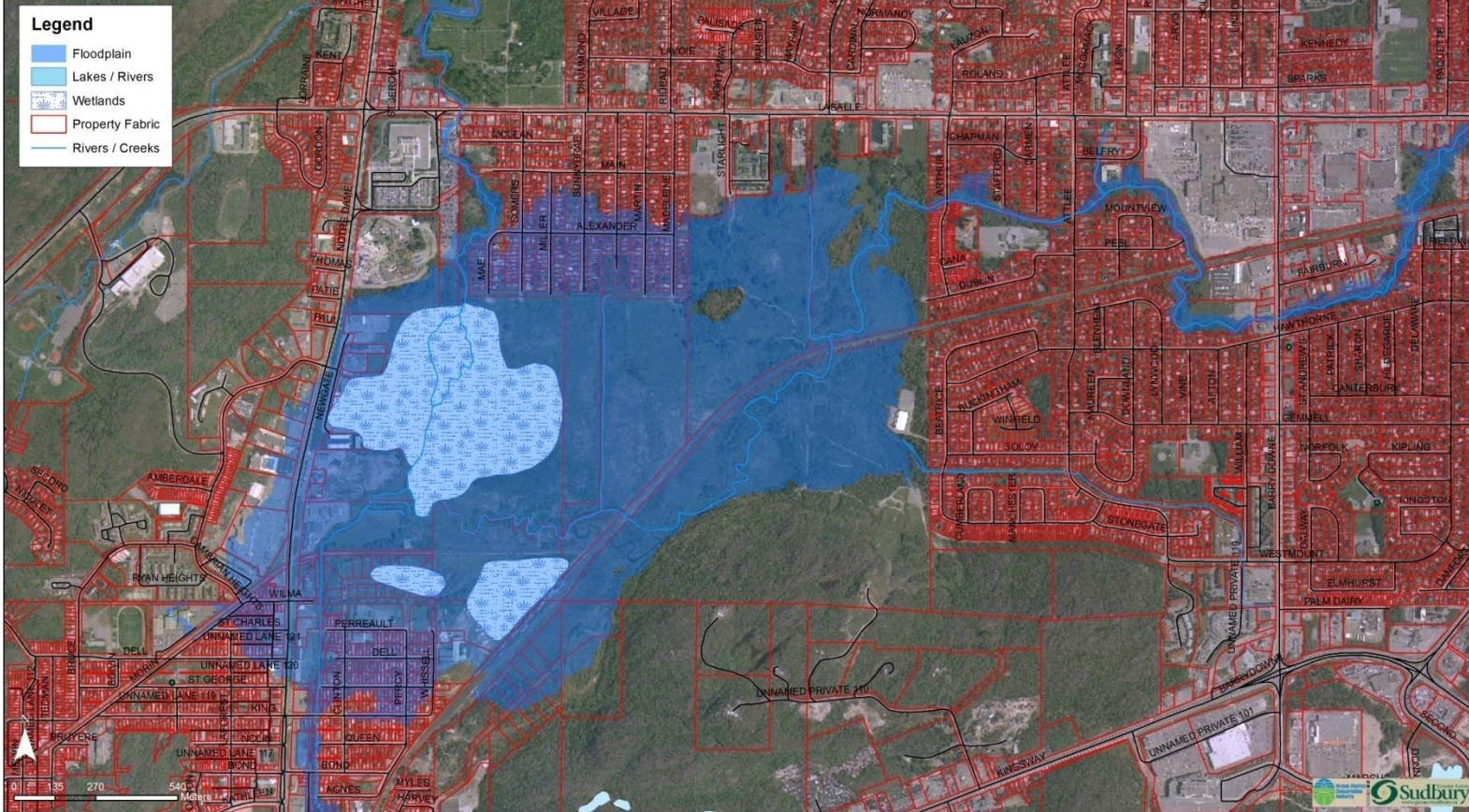
[www.greatersudbury.ca](http://www.greatersudbury.ca)    [www.grandsudbury.ca](http://www.grandsudbury.ca)



Nickel District  
Conservation  
Authority



# Flood Response Planning 2012 Junction Creek 3



**Always Prepared.**  
**Toujours prêts.**

Emergency Preparedness    Préparation aux situations d'urgence

[www.greatersudbury.ca](http://www.greatersudbury.ca)    [www.grandsudbury.ca](http://www.grandsudbury.ca)



# City of Greater Sudbury Community Flood Management Plan

## Next Steps

- French translation
- Implementation Date: April 1<sup>st</sup>, 2012
- Post to City website – [www.greatersudbury.ca/beprepared](http://www.greatersudbury.ca/beprepared)
- Plan to be made available at Libraries and CSCs

# QUESTIONS