



GROWTH AND DEVELOPMENT DEPARTMENT
ENVIRONMENTAL SERVICES DIVISION
PRESENTED BY: CHANTAL MATHIEU
NOVEMBER 16, 2011

Update & Recommendations from the Solid Waste Advisory Panel

Solid Waste Advisory Panel Members:

Councillor Barbeau - Chair
Councillor Berthiaume - Vice Chair
Councillor Kett
Ian Coppo
Skye Little
Mark Rene Peplinskie
Arthur Gordon Slade
Lloyd R. Stinson



Mandate: To function as Council's public liaison on current solid waste management issues.

Primary Objectives: To increase waste diversion and recycling efforts.



Item #1 - Trucks from a Rental Agency

The Panel recommends that residents interested in renting a truck from a rental agency to deliver their residential waste during the Residential Tipping Fee Holiday can do so by completing and submitting an application. In order to make these changes, Council must approve the following highlighted change in the Waste Management By-law:

Truck from a rental agency that has been pre-approved one week prior to the Clean-up Week. The approved original form must be submitted to the Scalehouse Attendant.



Item #2 - Waste Storage Containers

The Panel recommends that interested residents can make application for the use of a waste container storage to alleviate bear/animal issues. In order to permit the use of this container, the following requirements must be met and added to the Waste Management Bylaw:

Waste collection services shall be provided from the approved Waste Storage Container (TyeDee Bin or Approved Equal) provided that the container is:

- placed on the resident's own property no further than six feet from the edge of the road;
- the resident's/property owner's address is clearly marked on the container;
- completely accessible to collection crews;
- never placed in a location to impede road maintenance work.



Item #3 - Review of Various Waste Containers – Panel Recommendations

Garbage Containers

Rigid Container – increase the capacity of the container, but reduce the weight allowance.



Bags and Bundles – remove the capacity reference on the bag and reduce the weight allowance on the bags & bundles.

Leaf & Yard Trimmings Containers

Bags and Bundles – remove the capacity reference on the bag and reduce the weight allowance on the bags & bundles.



Item #3 - Review of Various Waste Containers – Panel Recommendations – con't

Residential Recycling Containers:

- Curbside recycling blue boxes or Big Blues with a maximum weight of 18 kg or 40 pounds.
- Rigid recycling container with the same requirements as a rigid garbage container, except it is a blue box blue and has a recycling mobius loop.
- A cardboard box or a box similar in size to a curbside recycling blue box placed beside an approved recycling container for periodic overflow.
- A clear plastic bag with recyclable shredded papers.
- A clear plastic bag with rigid polystyrene foam.



Commercial Recycling Containers:

- Curbside recycling yellow boxes and Big Yellows with a maximum weight of 18 kg or 40 pounds.





Item #4 - Enhancing Recycling & Waste Diversion at Municipal Facilities

The Panel recommends that the Environmental Services Division take a more active role in facilitating waste diversion and recycling efforts at City facilities and that City Facilities set the standard within the community.



We are part of Greater Grand Sudbury
Municipal Facilities **RECYCLE!**  Les installations municipales **RECYCLENT!**





Item #5 - Blue Box **Recyclables out of the** **IC&I Disposal Stream**

No tipping fee for recyclable materials delivered to the City's Recycling Centre or depot.

By recycling this material, the Industrial, Commercial & Institutional sector can reduce their overall disposal costs.



Commercial User Pay Garbage Bags

Sacs de déchets commerciaux payés par l'utilisateur

Do not place these items in your bag:

- sharp objects
- blue box recyclables
- hazardous waste

Remember to:

- not overload your bag
- follow the current garbage bag limit
- place your bags curbside by 7:00 am on your regular collection day

Ne placez pas les objets suivants dans votre sac :

- objets coupants ou tranchants
- articles recyclables dans les boîtes bleues
- déchets dangereux

Rappels :

- ne surchargez pas votre sac
- respectez le nombre de sacs permis
- placez vos sacs au trottoir avant 7 h le jour de la collecte



Greater | Grand
Sudbury

package of | paquet de **10**

Questions?

Call City Services at 3-1-1
Monday to Friday
between 8:30 am and 4:30 pm

Questions?

Appelez les Services municipaux au 3-1-1
du lundi au vendredi
entre 8 h 30 et 16 h 30



Item #6 – Provision of Curbside Collection Services to the IC&I Sector – Panel Recommendation

Ideal for businesses that:

- are located on the City's residential collection route.
- produce small quantities of garbage.

No impact to tax levy and fully funded by users.



Item #7 - Video: The City's Recycling Centre

A video of the City's Recycling Centre Processing System was developed in house and is posted on the City's website. The video demonstrates the collection of blue box recyclables and what happens to these recyclable items once they arrive at the City's Recycling Centre.

Direct English link to the full version:

<http://www.greatersudbury.ca/video.cfm?movie=0gp7MNKqiPo>

Direct French link to the full version:

<http://www.greatersudbury.ca/video.cfm?movie=58lpl4qwaHE>



Item #8 - Truckload Sale of Big Blues

The Panel recommends to hold one truckload sale in 2012 and one in 2013. Big Blues to be subsidized and sold at \$10 each.



Item #9 - Additional Recycling Collection Services

The Panel recommends that non-profit volunteer organizations with a sports related theme be exempt from the City's Biz Box Recycling Program fees.



or

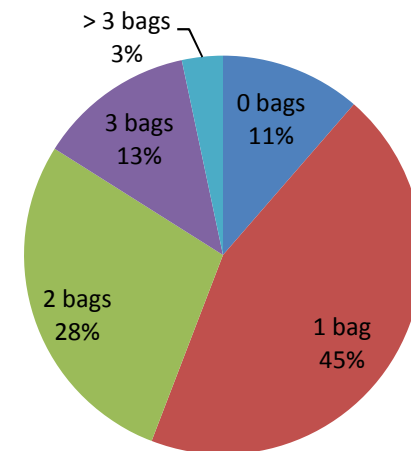




Item #10 – Reducing the Residential Garbage Bag Limit

The previous and current Panel recommends the reduction of the garbage limit from three to two units, effective **February 2013**.

- Increase diversion of waste from landfills and help postpone the costly and lengthy process of finding long term waste disposal capacity.
- Actively encourage the use of existing waste diversion programs, such as the collection of blue box recyclables, household hazardous waste, leaf & yard trimmings and green cart organics.
- 84% of households generate 2 garbage bags or less a week.



Item #10 – Reducing the Residential Garbage Bag Limit - continued

Pay closer attention to what you purchase and avoid products sold in excessive packaging. Determine if your waste product can be diverted and place it in the proper container.

For extra waste after full recycling



purchase garbage bag tags.
5 tags for \$10



45.68% of recyclable items are still being placed in garbage.

Effective February 2013



Item #11 - Leaf & Yard Trimmings out of the Residential Garbage Collection Stream

The Panel recommends that residents segregate and not place their leaf & yard trimmings in a garbage bag or a garbage container.

There is no limit on the amount of leaf & yard trimmings that will be collected provided that the material is placed in approved containers or bundles.

Effective March 2012.





Greater Sudbury's Recycling Guide.

Acceptable Materials

Corrugated Cardboard & Pizza Boxes - Flatten to a 30" x 30" size and remove all plastics. Do not include waxed cardboard.

Household Paper - Newspapers, Magazines, Catalogues, Inserts, Flyers, junk mail, telephone books and hard & soft covered books.

Household Paper - Writing/printing paper, envelopes, greeting cards, non-foil gift wrap, non-treated paper bags.

Plastic Bottles, Jugs, Tubs, Pails, Trays & Foam Packaging - Look for the #1, #2, #4, #5 and #6 recycling symbol to determine if the packaging item is recyclable. Exclude motor oil jugs, foam peanuts, foam insulation. Rinse all plastics.

Plastic Bags - Grocery, break, produce and frozen vegetable bags, dry cleaning bags,

outer wrapper for toilet tissue and other paper products. Remove paper receipts and place bags in one tied plastic bag.

Clean & Coloured Glass Bottles & Jars - Rinse.

Milk & Juice Containers/Cartons - Juice boxes, packaged milk & soy beverages, wine packs, milk cartons. Remove straws and rinse.

Egg Cartons - Paper and foam egg cartons.

Aluminum & Steel Cans, Aluminum Foil, Pie Plates and Trays - Food and beverage cans such as soda cans, vegetable cans. Rinse.

Empty Paint Cans & Aerosol Cans - Ensure paint can is empty and dry, remove lids from cans and recycle separately.

Cardboard Cans - Remove plastic seal off cardboard cans and rinse.



Place items loosely in your recycling container.

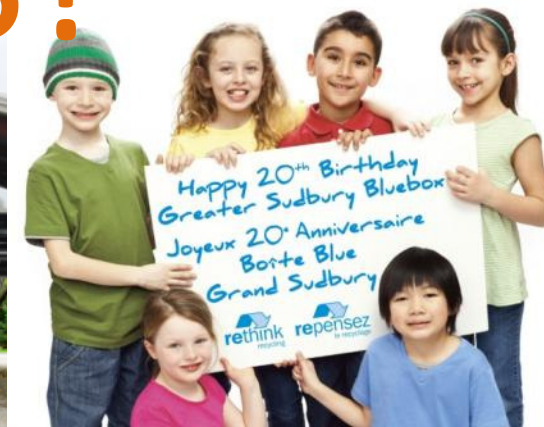
Need More Information?

Call City Services at 3-1-1 or visit www.greatersudbury.ca/wastemanagement

'Tis the Season to Recycle

Make it a green Christmas. Place all your holiday recyclables in the Blue Box.

- Wrapping paper rolls
- Wrapping paper (non-foil, remove bows/ribbons)
- Flattened boxes (30" x 30", remove plastic)
- Egg cartons
- Greeting cards
- Envelopes
- Aluminum pie plates
- Catalogues
- Liquor & pop bottles
- Eggnog cartons



1991
20
2011

3-1-1 Service

Greater/Grand Sudbury
www.greatersudbury.ca

