



**QuadraFNX**  
MINING LTD

**SUDBURY OPERATIONS**  
OPERATED BY:  
**FNX MINING COMPANY INC.**

# **VICTORIA ADVANCED EXPLORATION PROJECT**

# FORWARD LOOKING STATEMENT



Certain information appearing in this presentation constitutes forward looking information. Forward looking information is subject to known and unknown risks, uncertainties and other factors, including potentially inaccurate assumptions, which may cause the actual results, performance or achievements to be materially different from the results, performance or achievements expected or implied by the forward looking information.

The Company disclaims any intention or obligation to update or revise any forward looking statements whether as a result of new information, future events or otherwise.

No invitation to purchase securities is being made.

For additional disclosure about the Company, including a detailed discussion of the risks, assumptions and uncertainties relating to the Company, please see our Annual Information Form, Financial Statements and other materials available from [www.sedar.com](http://www.sedar.com) or our website, [www.quadrafnx.com](http://www.quadrafnx.com).



# QUADRA FNX: WHO WE ARE



## We are:

- A Canadian mid-tier base metals mining company
- Over 2,100 employees at six operating mines in Canada, USA & Chile
- Constructing our Sierra Gorda Cu- Mo project in Chile & progressing the Victoria Project in Sudbury
- Committed to zero harm

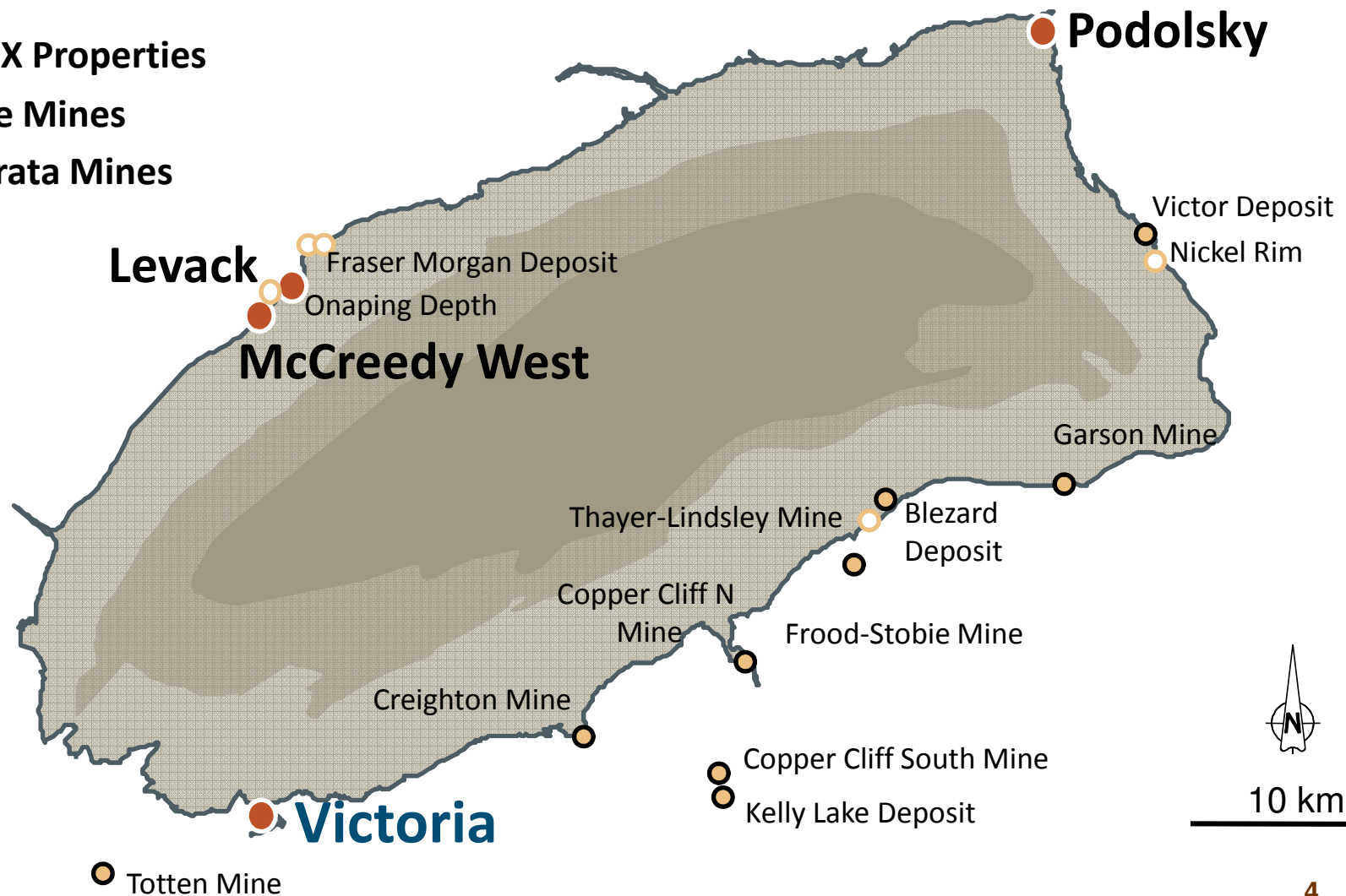
# SUDBURY: OUR MINE & PROJECT LOCATION



● QUX Properties

○ Vale Mines

○ Xstrata Mines





# SUDBURY: CURRENT OPERATIONS



## LEVACK MORRISON DEPOSIT



- Flagship underground Cu footwall deposit
- ~ 225 employees
- ~Zero cash cost
- Recently announced the Craig Access Arrangement with Xstrata Nickel
  - Increasing output
  - Development of reserves & resources

## MCCREEDY WEST

- ~ 98 employees & growing



## PODOLSKY

- ~ 132 employees



# EXPLORATION AND SENIOR MANAGEMENT



## Exploration & Management

1300 Kelly Lake Road

- 36 employees



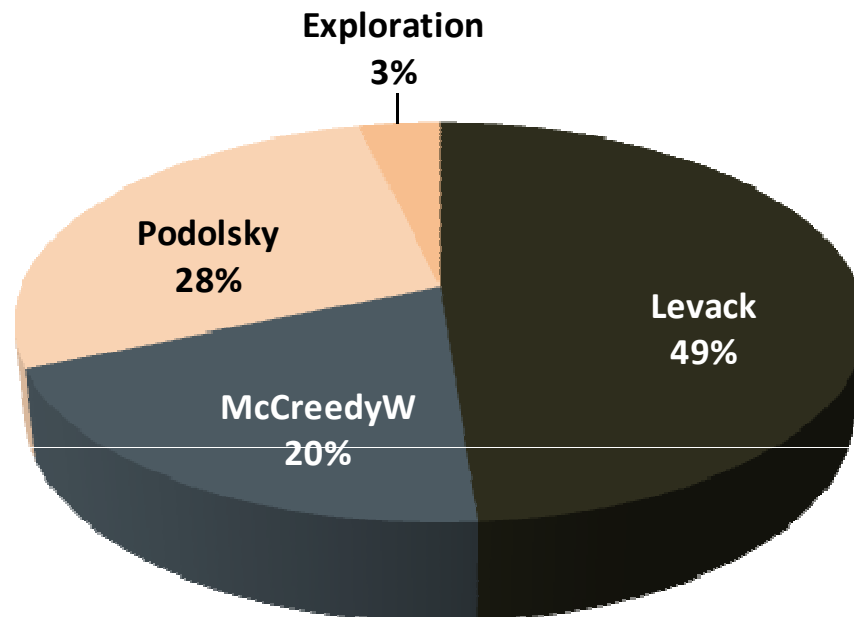
## Victoria Project Office

200 Mumford Road - Lively

- 3 employees



# SUDBURY: OUR WORKFORCE



**2011**

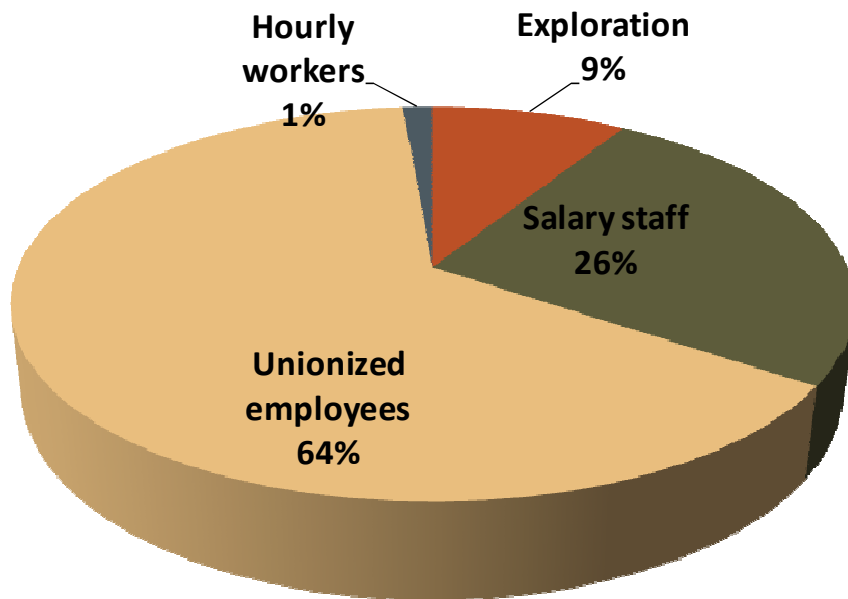
- 500 direct employees
- 200 contractor man years
  - Total jobs = 700



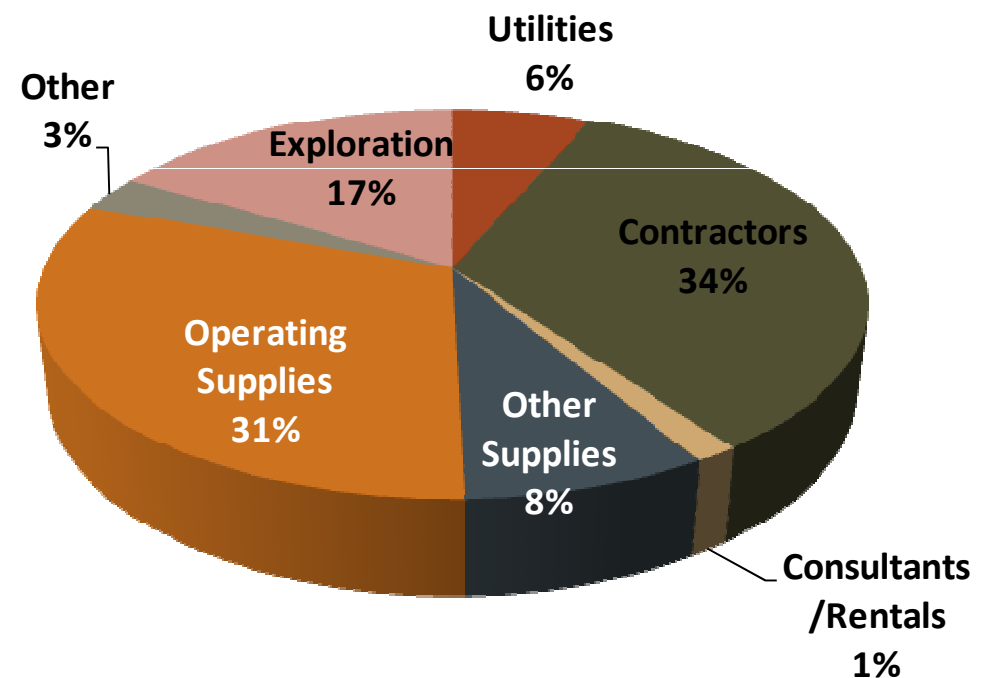


# SUDBURY: 2010 ECONOMIC CONTRIBUTION

**Over \$45 M in payroll  
contribution  
in 2010**



**Over \$120 M in Goods and  
Services  
Spent in the District in 2010**





# VICTORIA ADVANCED EXPLORATION PROJECT

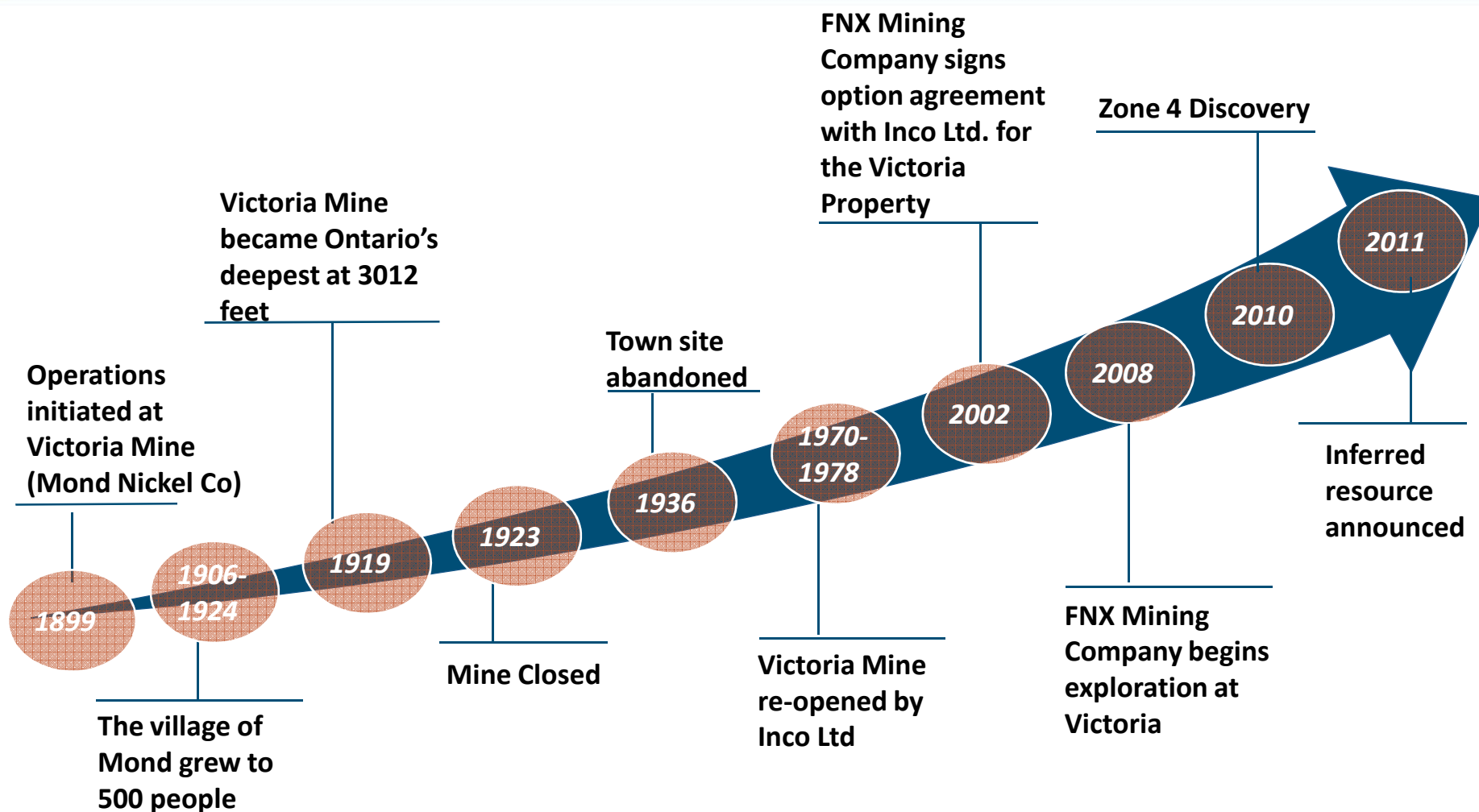


## Victoria Project

Grassroots – Advanced Exploration – Commercial Production



# HISTORY OF THE VICTORIA PROPERTY

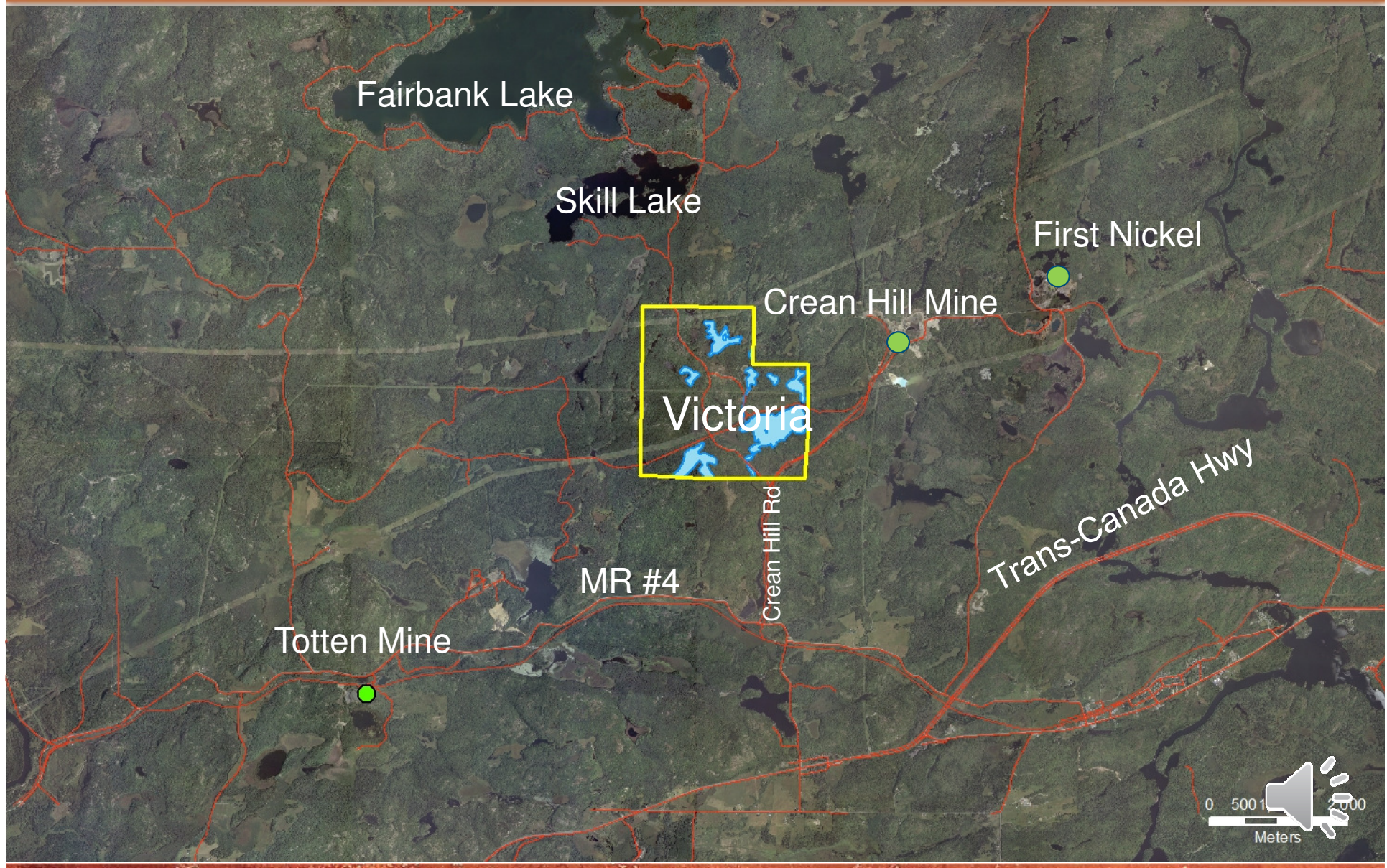


# LOCATION



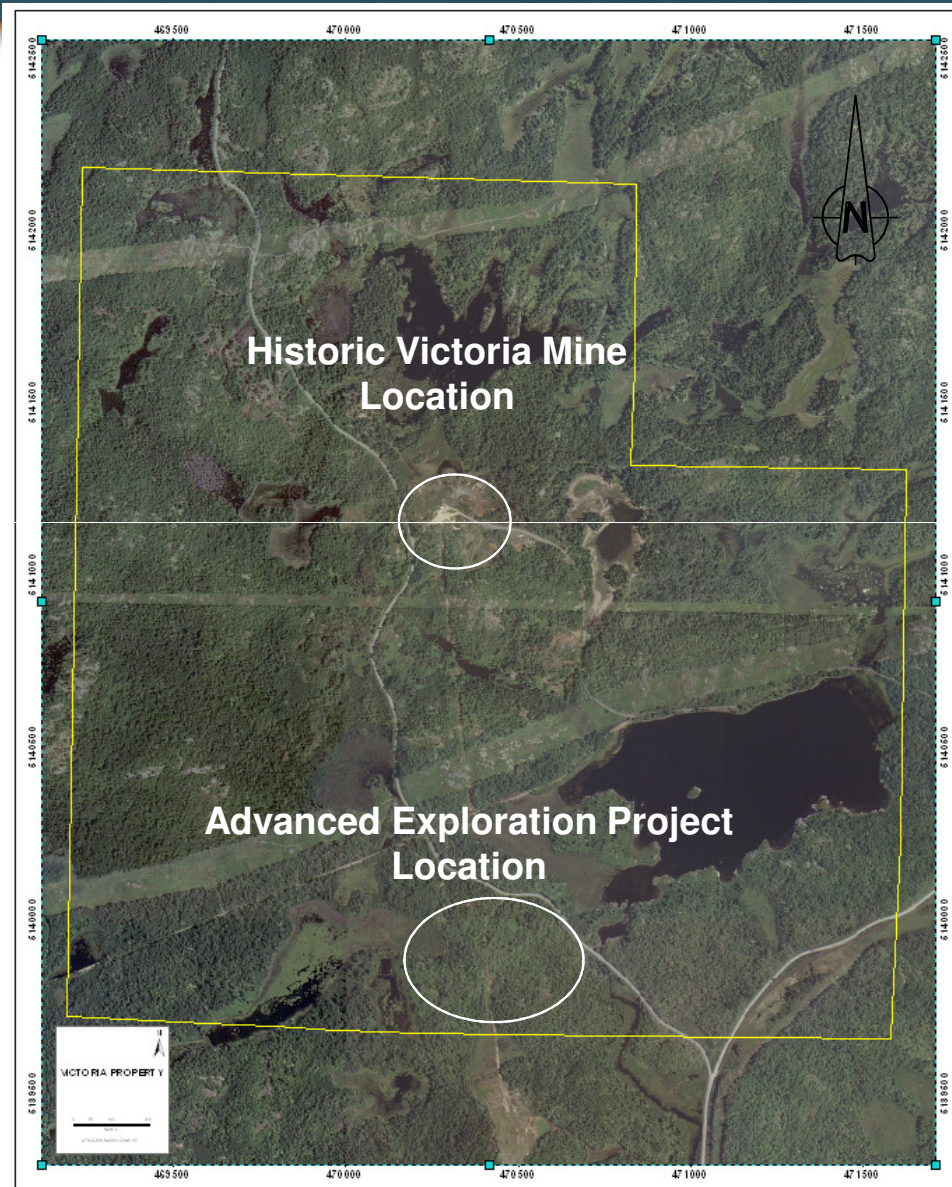


# VICTORIA LOCATION





# LOCATION OF VICTORIA PROPERTY



## Old Victoria Mine

- Operated between 1899 – 1923 and 1970 – 1978

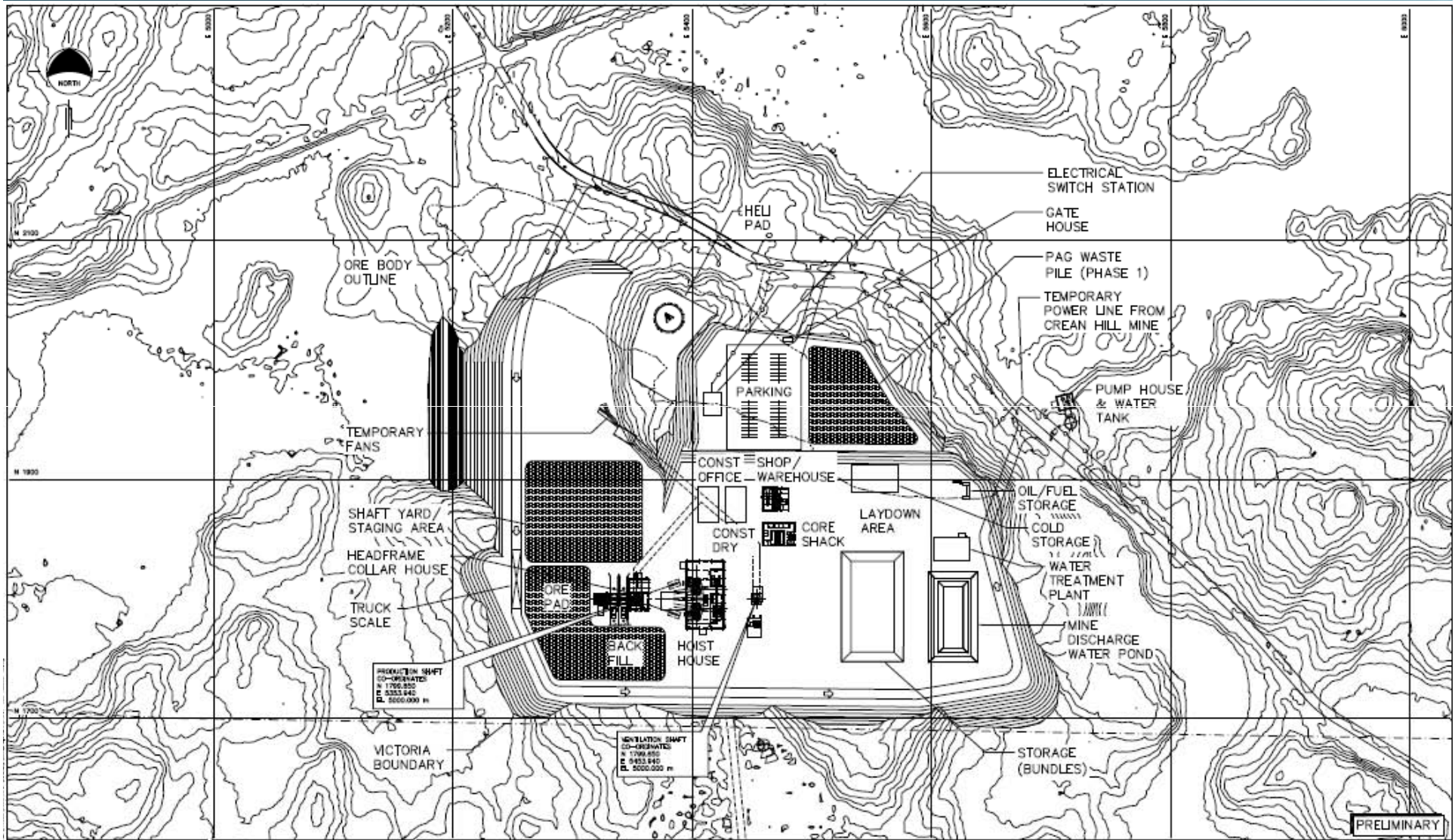
## New project area

- Located 1.2 km south
- New footprint
- New infrastructure

Crean Hill Rd



# SITE PLAN – ADVANCED EXPLORATION

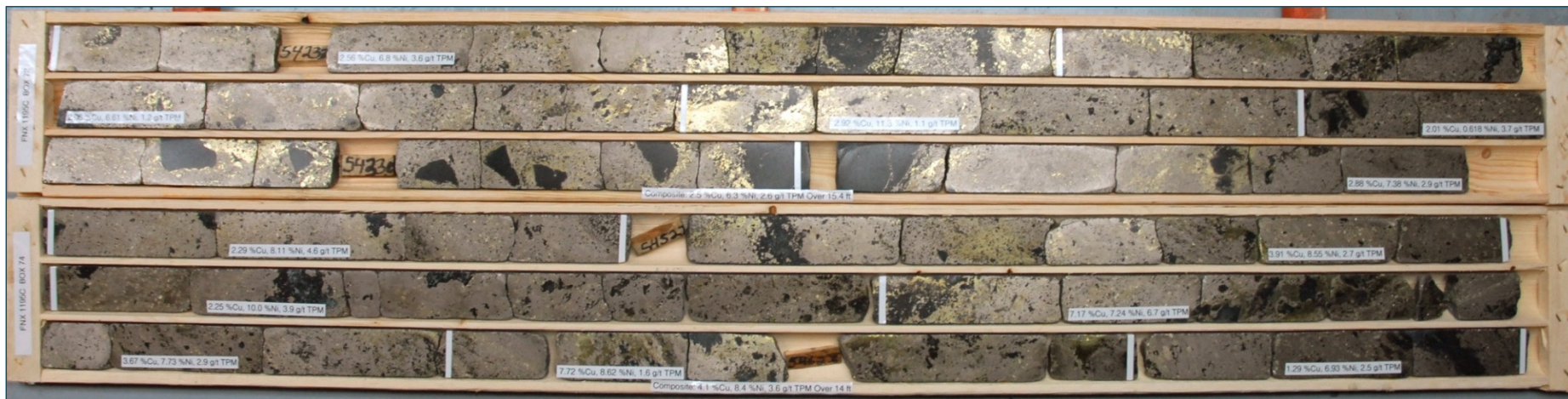


PROJ: 160311547 NO: 100-A0003 REV: 001 DATE: 2011.05.22	REF: ENG. NO. REFERENCE DRAWING FILE REV: 001 DESCRIPTION: PRELIMINARY - DATE: 2011.05.22 DRAWN BY: [blank] CHECKED BY: [blank]	A PRELIMINARY - DATE: 2011.05.22 DRAWN BY: [blank] CHECKED BY: [blank]	 NOT FOR CONSTRUCTION PROGRESS PRINT DWS UPDATED: 11.05.26 REV: 001	COPYRIGHT RESERVED The Company shall retain and be responsible for all drawings and shall not be liable for any loss or damage to be caused by the use of the drawings. The copyright in all designs and drawings are the property of QuadraFX Mining Ltd. No part of any program or other data submitted by the user is to be reproduced.	SUBMITTED BY: DEM DATE: 2011.05.22	 QUADRAFNX MINING LTD Advanced Exploration Layout	SCALE: 1:1500 PROJ: 160311547 NO: 100-A0003 REV: 001
--	---	---	---	--	---------------------------------------	---	---

# VICTORIA: INFERRED RESOURCE



## FNX1195C



Inferred	Tonnes (M)	Cu (%)	Ni (%)	Pt (g/t)	Pd (g/t)	Au (g/t)	TPMs (g/t)
Zone 4	12.0	2.3	2.3	3.2	4.4	1.0	8.7
Zone 2	0.3	1.4	0.9	1.4	2.2	0.6	4.3
Mini	0.1	1.2	0.6	0.9	0.5	0.2	1.5
<b>Total</b>	<b>12.5</b>	<b>2.3</b>	<b>2.2</b>	<b>3.2</b>	<b>4.3</b>	<b>1.0</b>	<b>8.5</b>

The Mineral Resource estimate was prepared in accordance with the "CIM Definition Standards On Mineral Resources and Mineral Reserves", adopted by CIM Council on December 11, 2005, and the CIM Estimation of Mineral Resources and Mineral Reserves Best Practice Guidelines, adopted by CIM Council on November 23, 2003, using geostatistical and/or classical methods, plus economic and mining parameters appropriate to each operation. Definitions and guidelines can be found at [www.cim.org](http://www.cim.org).



# VICTORIA: PROJECT OVERVIEW



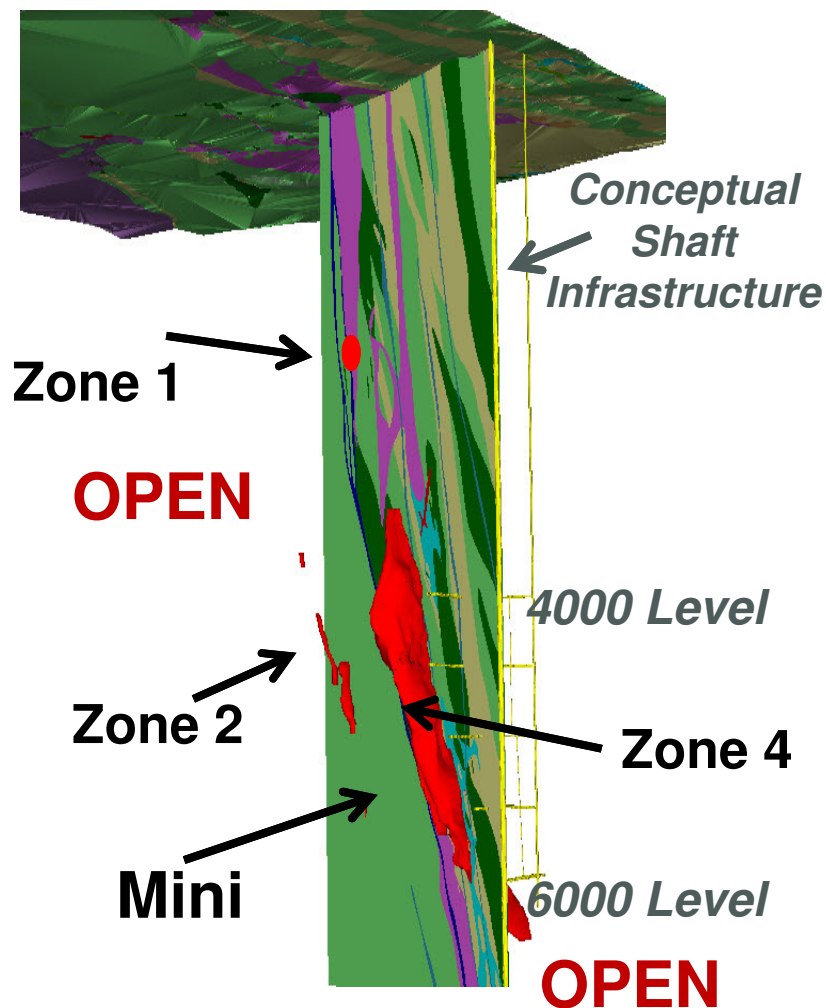
## Capex & timing

- Preliminary capex estimate:  
~ \$750,000,000 range over 7 years

## Current focus

- Step-out exploration drilling as we expect to grow the resource
- Engineering in process (by year-end)
- Consultations with all stakeholders & environmental permitting
- Initiated discussions with Vale on payability terms & back in right

## Long Section (looking NE)

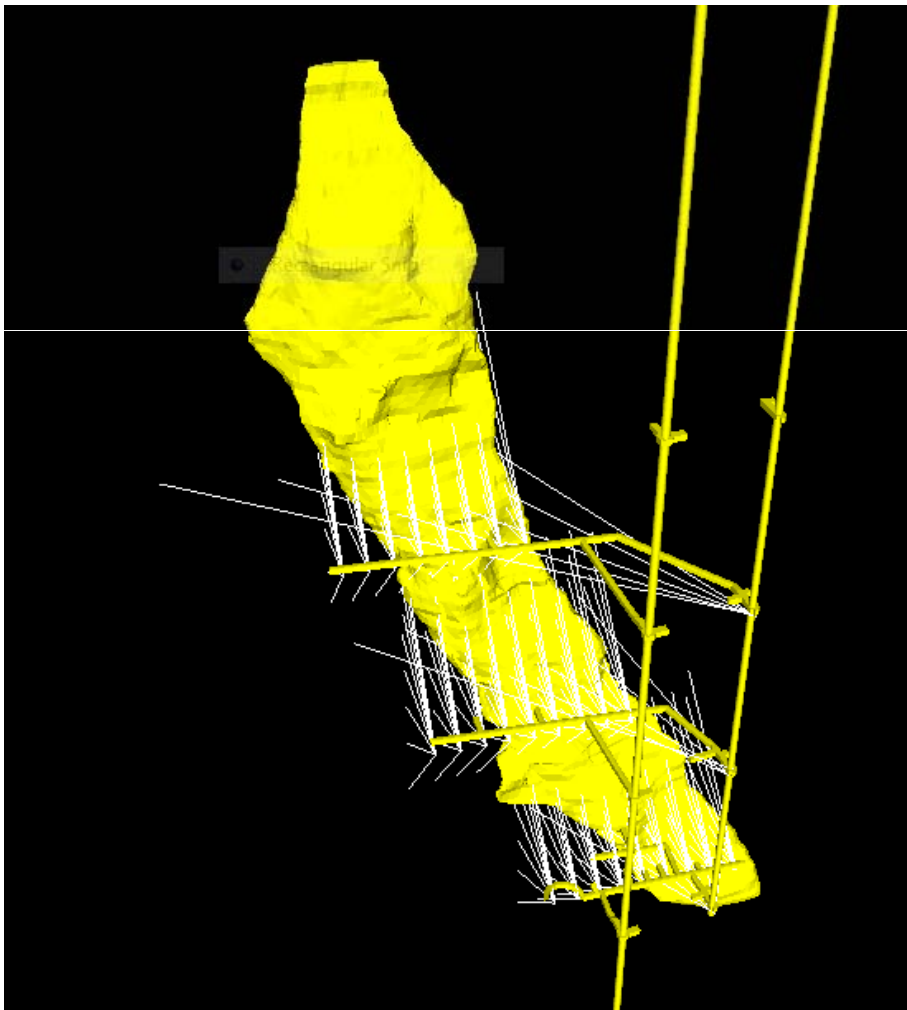




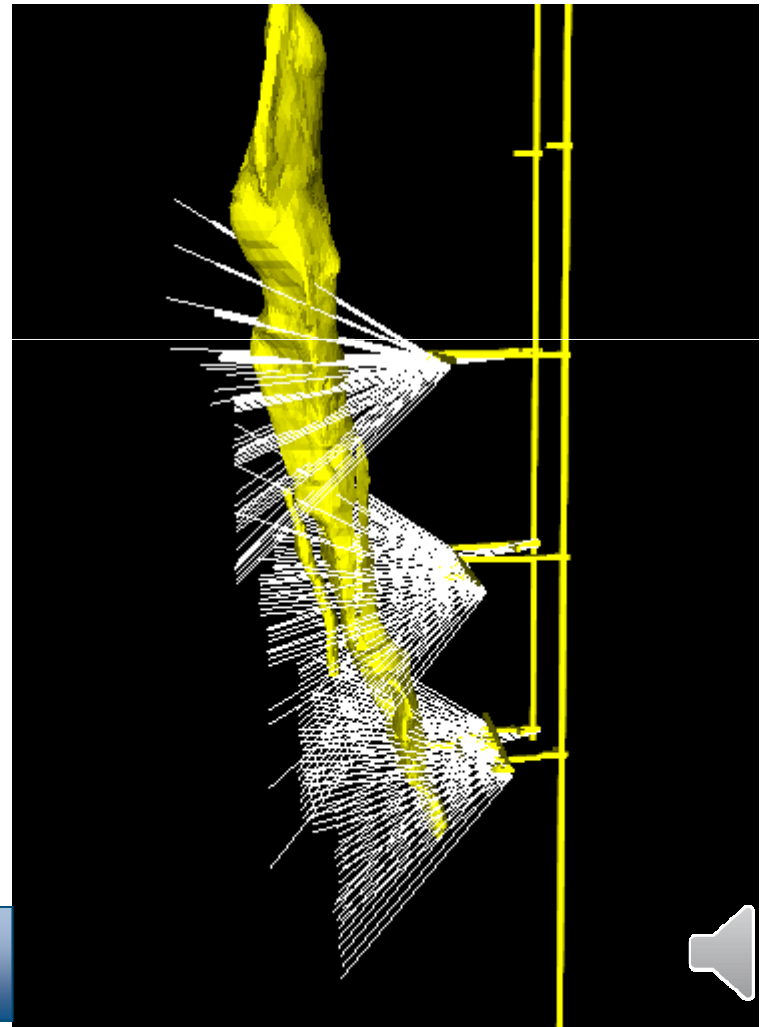
# CONCEPTUAL UNDERGROUND VIEWS



Looking North



Looking East



# POTENTIALLY AFFECTED COMMUNITY GROUPS



## Aboriginal Communities

- **Atikamekskeng Anishnawbek – Whitefish Lake First Nation**
- **Sagamok Anishnawbek First Nation**
- **Metis Nation of Ontario**

## Local Community Groups

- **City of Greater Sudbury**
- **Fairbank Lake Cottagers Association**
- **Local Residence - Worthington, Whitefish Lake, etc.**
- **Vermillion River Stewardship Group**
- **Walden Snow Runners**



# INTERACTION WITH CITY OF GREATER SUDBURY



- Infrastructure – Roads
- Site Plan Approval
- Building Permits

**Working Together for a Better Sudbury**



# SUDBURY: EDUCATION



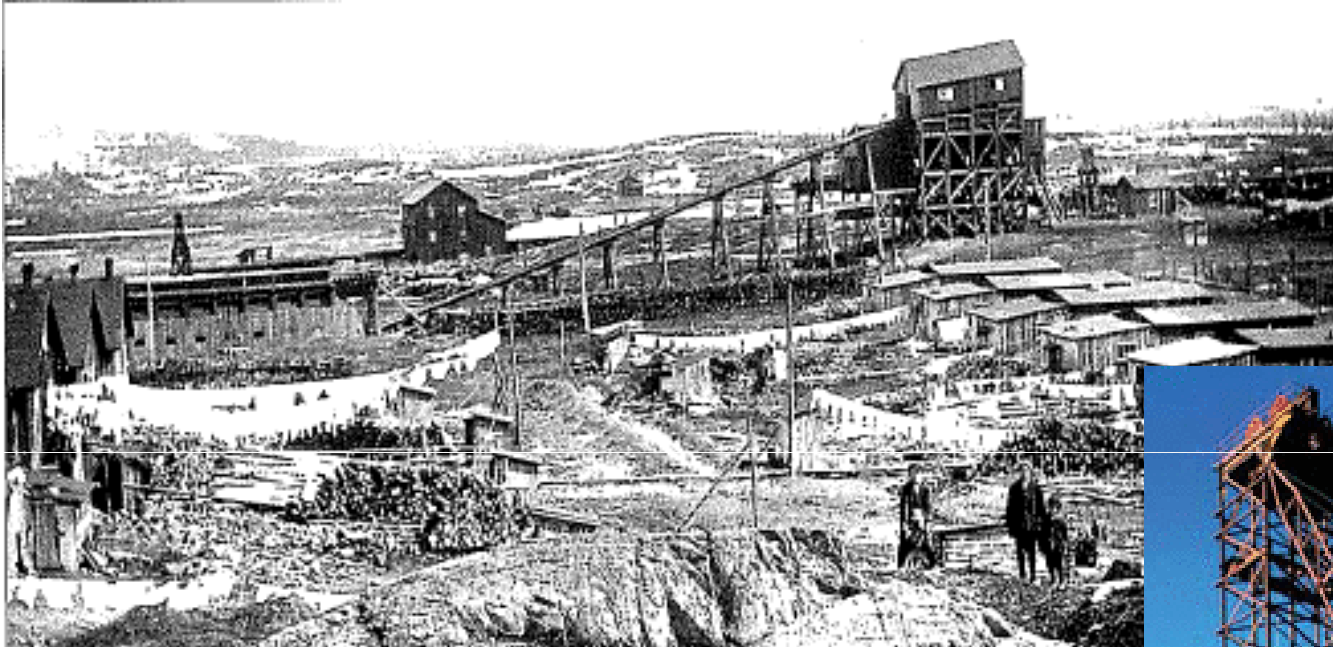
## A partnership with Laurentian University







THANK YOU



**Thank You**

