



Proposed All Terrain Vehicles (ATV) Policy/Bylaw

How did we get Here?

- **Constellation Report - January 2007. Was one of 35 recommendations**
 - **All Terrain Advisory Panel Created – Oct 2007**
- **Public consultation meetings (7) in Fall of 2008,**

Panel Members

- **Councillor Jacques Barbeau**
 - **Former Councillor Russ Thompson**
 - **Dave Bolton (Chair)**
 - **Jean Roy (Vice Chair)**
 - **Cory Smith**
-
- **Robert Hanson**
 - **Robert Jones**
 - **Thanks to all the staff (Police Services, Infrastructure, By-law, Community Development, Planning Services, CAO's Office, Mayor's Office, Tourism, Communications, Legal)**

Public Consultation

- Facebook, Northern Life and Le Voyageur newspapers and the CGS website
- 4 public open houses



Public Consultation – Garson

- Approximately 175-200 attendees



Public Consultation – Hanmer

- Approximately 200 attendees



Public Consultation – Azilda

- Approximately 150 attendees



Public Consultation – Walden

- Approximately 150 attendees



What we learned

- Sudbury is “behind the times”
- Sudbury is losing out on tourism \$\$



Photo courtesy of: <http://www.argylelakelodge.com/atvtrails.htm>

What we learned

Currently lots of illegal activity



Photo courtesy of: Paul Laplante

What we learned

Destruction of local walking trails



What we learned

Trespassing



Photo courtesy of: Paul Laplante

What we learned

Trespassing



What we learned

- People enjoy the sport
- Part of Northern Ontario lifestyle



Photo courtesy of: 24 uaca.bg

What we learned

The idea is to be able to travel to your favorite fishing spot.....from home, or camp, by ATV.



Photo courtesy of: www.northernontario.travel

What we learned

There will be increased, unbudgeted road maintenance costs.



Photo courtesy of: www.ehow.com

What we learned

- Introducing a new class of vehicle on public roads

Police services will be stretched



Photo courtesy of: www.northernlife.ca

What can the City of Greater Sudbury regulate?

- **ATVs on public roads!**
- **Speed**
- **Time of day**
- **Time of year**



What we showed the public:

- Two map options
- And some educational information



Part A: We want your opinion!



Part B: General Information



More Information:



* Municipalities have the autonomy to decide if, where and when All Terrain Vehicle (ATV) use is appropriate on municipal roads. They may pass a by-law to allow ATVs to access their roads and to define the times/seasons for ATV operation, as well as a lower speed limit.

Part A – We (the CGS) want your opinion!

1a) Which map represents the ATV routing option that you prefer?

1b) Would you rather not allow ATVs on any local (public) roads within the City of Greater Sudbury (CGS)?

2) Do you feel the already reduced rates of speed in the legislation should be further reduced in the CGS?

3) Should the CGS limit the hours/times (seasons) of year that ATVs are permitted on the road?

Part B - General knowledge ATV questions - F.Y.I.

1) Do I have to wear a helmet?

- YES! Riders must wear an approved motorcycle helmet.
- Riders should also wear appropriate footwear and clothing as well as eye protection and gloves.

2) What are the speed limits for ATVs?

- 20 km/h - on highways/roads where the speed limit is 50km/h or less.
- 50 km/h - on highways/roads where the speed limit is more than 50km/h.

3) Do I need insurance?

- YES! Within the City of Greater Sudbury ATVs must be registered and insured.
- Farmers, trappers and public utility workers may have some exemptions.

4) Are "Side by Side" UTVs (Utility Task Vehicle) permitted in this bylaw?

- NO! ATVs (All Terrain Vehicles) for the purpose of this bylaw are defined as:
 - Has four wheels, the tires of which are all in contact with the road;
 - Has steering handlebars;
 - has a seat that is designed to be straddled by the driver; and
 - is designed to carry a driver only and no passengers.

5) How old do I have to be to operate an ATV?

- You must be at least 16 years of age and possess a valid driver's license. (Classes: A, B, C, D, E, F, G, G2, M or M2).

6) Can I have a passenger?

- NO! Passengers are not allowed.

7) Where can I legally operate my ATV?

- In the Province of Ontario ATVs are prohibited from 400 series highways, Trans-Canada Highway and Queen Elizabeth Way.
- ATVs are generally allowed access to 500 to 899 and 700 series highways as well as highways with low traffic volumes.
- Provincial Highways with a Summer Average Daily Traffic level of less than 5,000 unless otherwise stated in the Provincial regulation schedules.
- Can operate on the shoulder or move to the travelled portion of a highway if the shoulder is impassable or unsafe.
- Riders must operate their ATV in the same direction as traffic on roads/highways.

8) Where is it illegal for me to operate my ATV?

- At the moment - anywhere within the limits of the CGS, except for on private lands - with owner's consent and crown lands.
- There are no legally designated trails within the CGS's boundaries.
- Within the Province of Ontario, ATVs:
 - Cannot operate on rights-of-way (e.g. medians) between opposing lanes of traffic, a construction zone, on a closed highway or within a provincial park unless allowed by the park.

More information on ATV use in the province of Ontario can be found on these websites:

- Greater Sudbury Police Services website:
 - <http://greatersudburypolice.create3.solutionsgroup.ca/en/index.asp>
- City of Greater Sudbury website:
 - www.greatersudbury.ca/atvbylaw
 - www.grandsudbury.ca/reglementvt
- Ontario Ministry of Transportation:
 - <http://www.mto.gov.on.ca/english/index.shtml>
 - <http://www.mto.gov.on.ca/french/index.shtml>

* With notes from the Ministry of Transportation; Off-Road Vehicles Legislation/Regulations webpage and the Greater Sudbury Police Services webpage.

What is Allowed!

- **ATVs with 4 wheels, the tires of which are all in contact with the road;**
- **Has steering handlebars;**
- **has a seat designed to be straddled by the driver; and**
- **is designed to carry a driver only and no passengers!**

Some examples of vehicles that will be allowed and not allowed under the proposed City of Greater Sudbury ATV By-law



Dirt bikes are not allowed on the road under this By-law.



Utility Task Vehicles (UTVs) or "Side-by-Sides" are not allowed on the road under this By-law



ARGO UTVs are not allowed on the road under this By-law



Three-wheelers (trikes) are not allowed on the road under this By-law



ATVs with 4 wheels and a seat designed to be straddled by the driver are allowed on the road under this By-law



Aftermarket 2-up seats are permitted, however passengers are not allowed on the road under this By-law



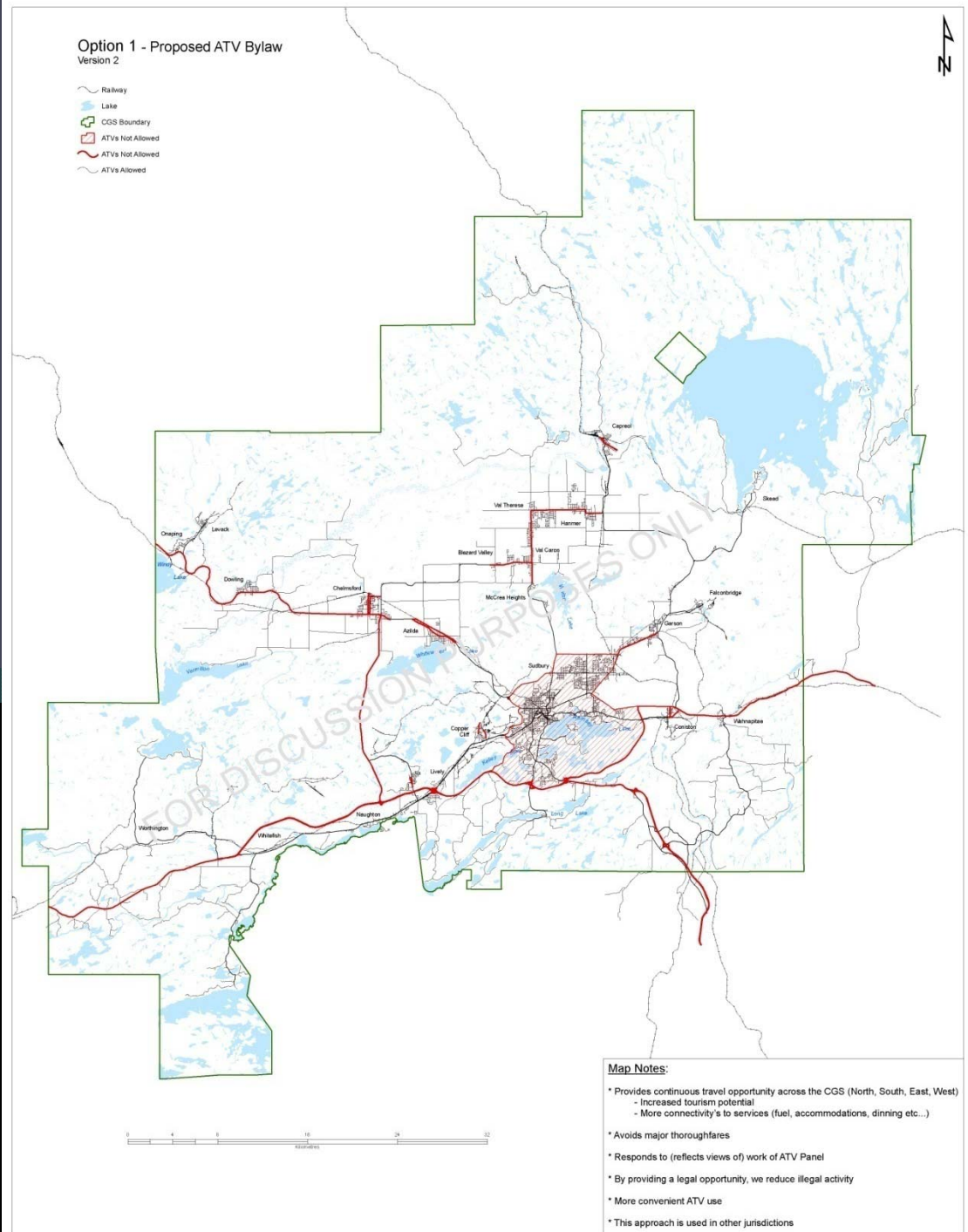
ATVs with more than 4 wheels are not allowed on the road under this By-law



Factory built 2-up-seat ATVs are not allowed on the road under this By-law

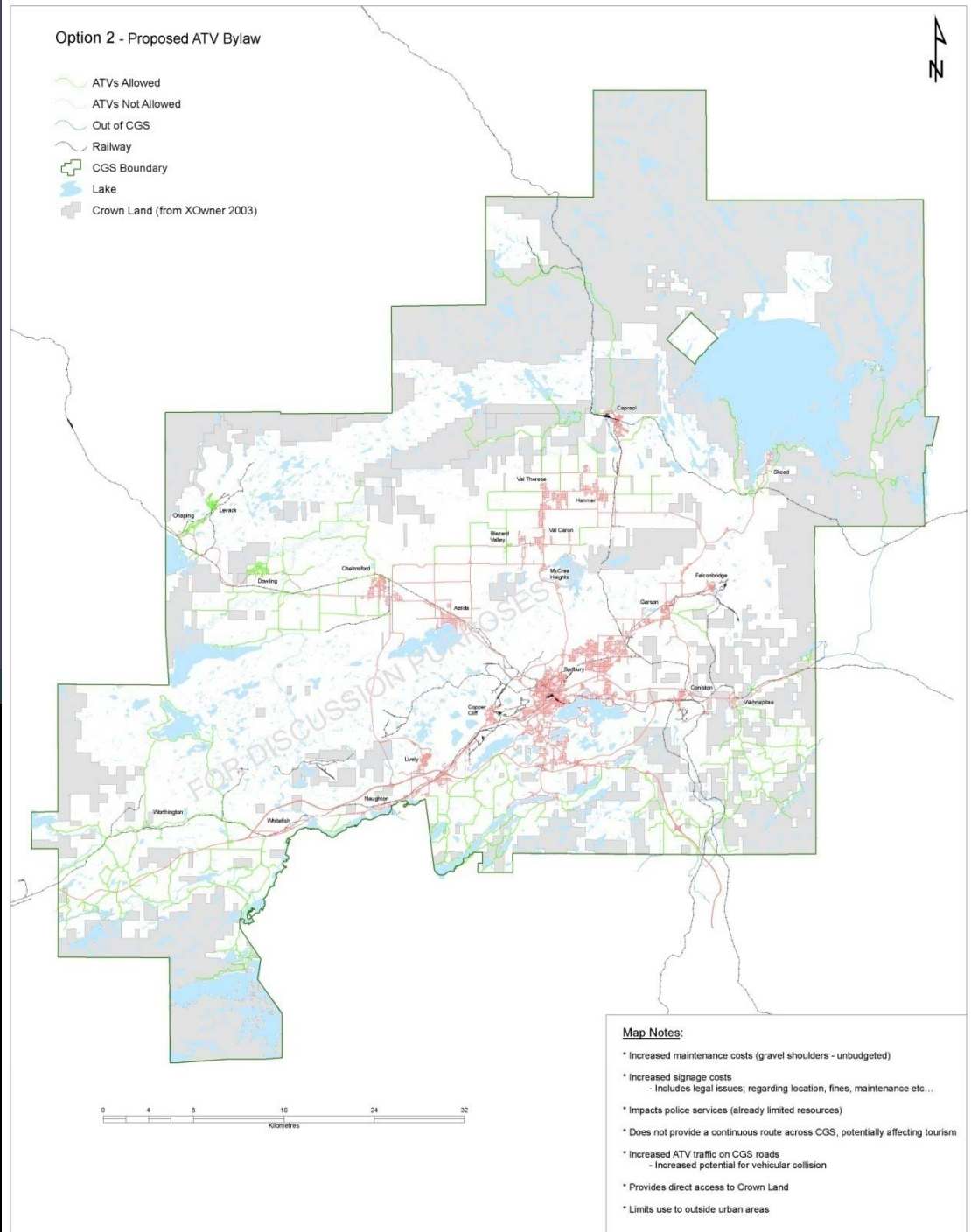
Map Option 1

- Provides continuous travel opportunity across the CGS
- Increased tourism potential
More connectivity to services (fuel, accommodations, food etc..)
- Avoids major thoroughfares
- Responds to the work (reflects the views) of the former ATV Panel
- By providing a legal opportunity, we reduce illegal activity
- More convenient ATV use
- This approach used in other jurisdictions



Map Option 2

- Increased maintenance costs (gravel shoulders – unbudgeted)
- Increased signage costs, including legal issues regarding fines, maintenance etc..
- Impacts police services (already limited resources)
- Does not provide a continuous route across the CGS (affects tourism)
- Increased ATV traffic on CGS roads. Increased potential of vehicular collision
- Provides direct access to Crown Land
- Limits use to outside urban areas



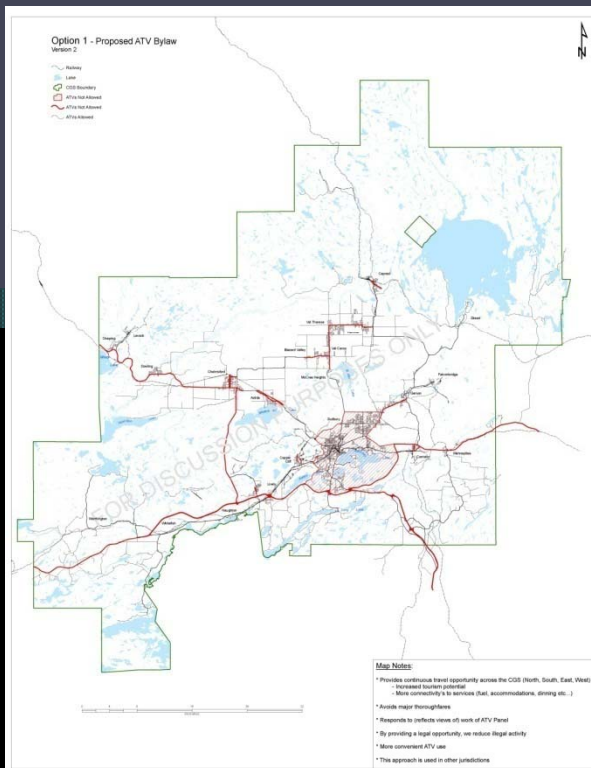
From the Public Open Houses; we went, they came, they spoke, we heard:

- Strong positive voice for Option 1
- Issues of trespass and nuisance
- “Side by side”

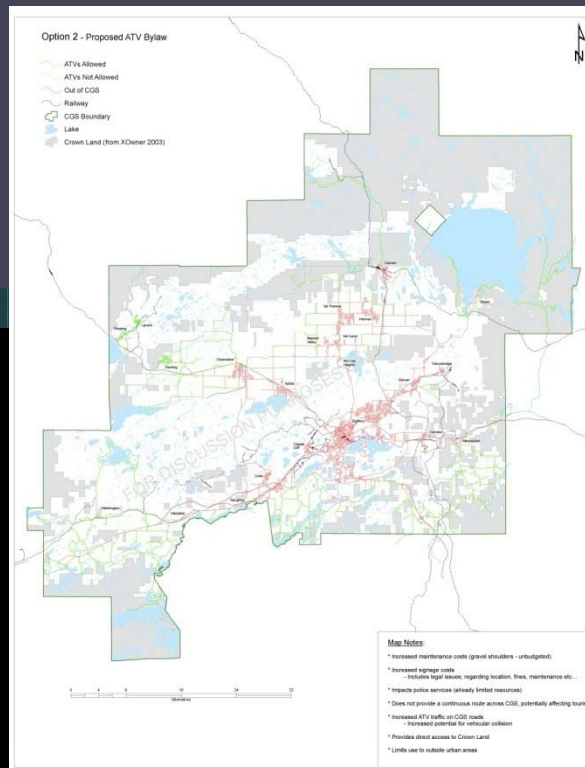


What are the recommendations?

1) Map Option 1



2) Map Option 2



3) Status Quo

**NO ATVs
Allowed on
Public Roads!**

Map Options 1 & 2

- 2 year trial basis
- Limit use to between 7am and 11pm daily
- Not allowed during winter months
(Dec 1st – April 1st)
- **Reduced speed on local roads – inline with the Province of Ontario**
(20km/hr on roads where speed limit is 50km/hr and less and 50km/hr on roads where speed limit is 50km/hr and greater)

A person is riding a camouflage-patterned ATV. The ATV is dark with a tan and brown camouflage design. The rider is wearing a helmet and a dark jacket. The background is a light, hazy landscape.

Thank you!

Questions?