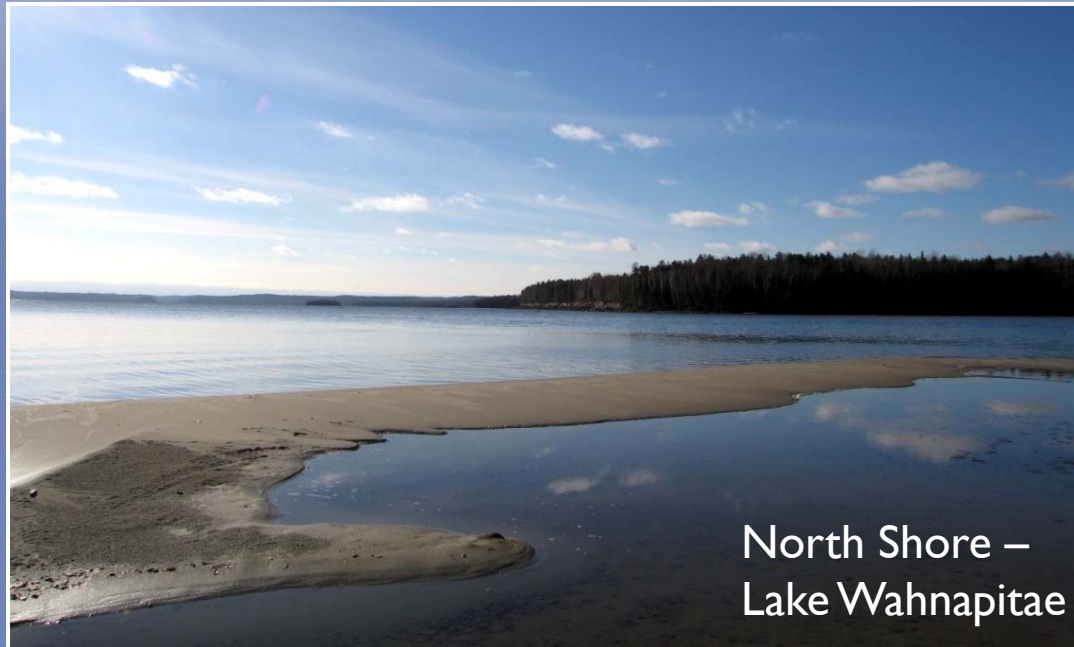
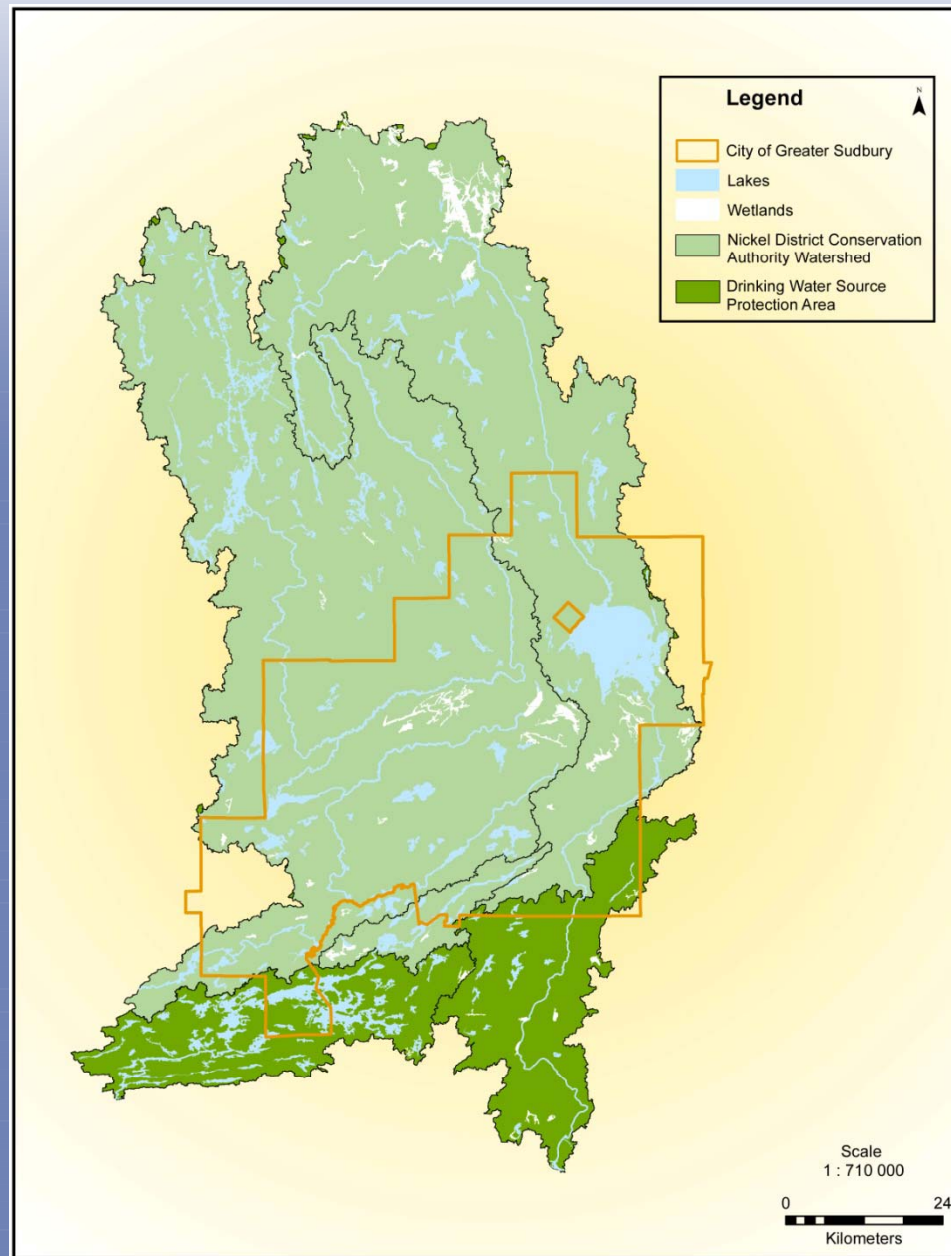


2011 Nickel District Conservation Authority Budget



North Shore –
Lake Wahnapiatae

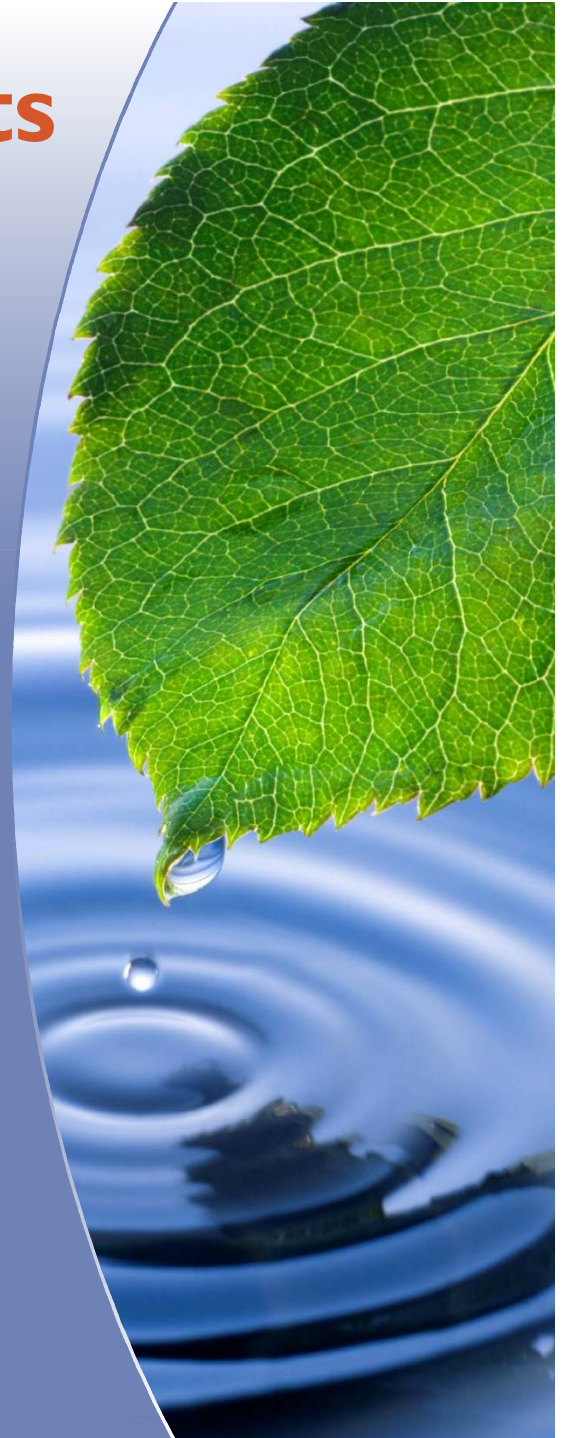
N.D.C.A. Watershed



Nickel District
Conservation
Authority

Greater Sudbury Water Facts

- Greater Sudbury: 3,626 km²
- Source Protection Area: 9,150 km²
- 3 watersheds: Vermilion, Wanapitei and Whitefish
- 44% water bodies and riparian areas
- 2,573 lakes greater than 2 ha
- 609 lakes greater than 10 ha
- 446 km of rivers

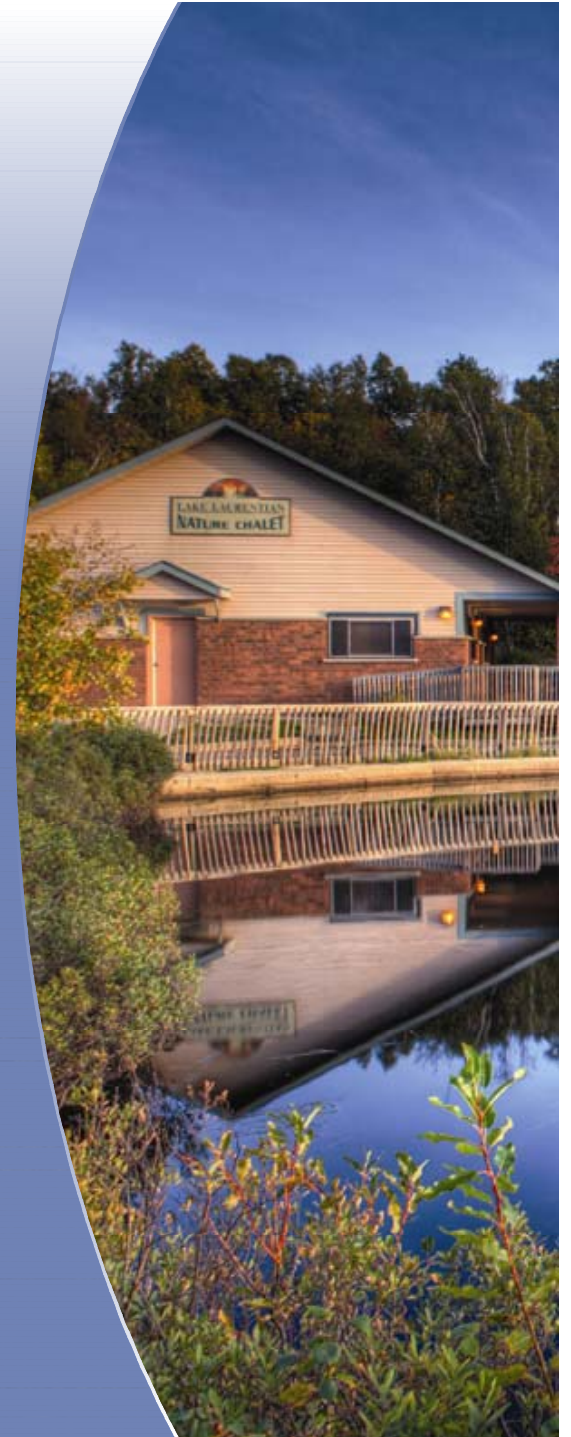


Our Vision

**“People working
together
to protect our
watersheds”**



Nickel District
Conservation
Authority



Our Mission

The Nickel District
Conservation Authority, in
collaboration with partners,
stakeholders and citizens,
leads the conservation,
management and restoration
of our watersheds.



Nickel District
Conservation
Authority



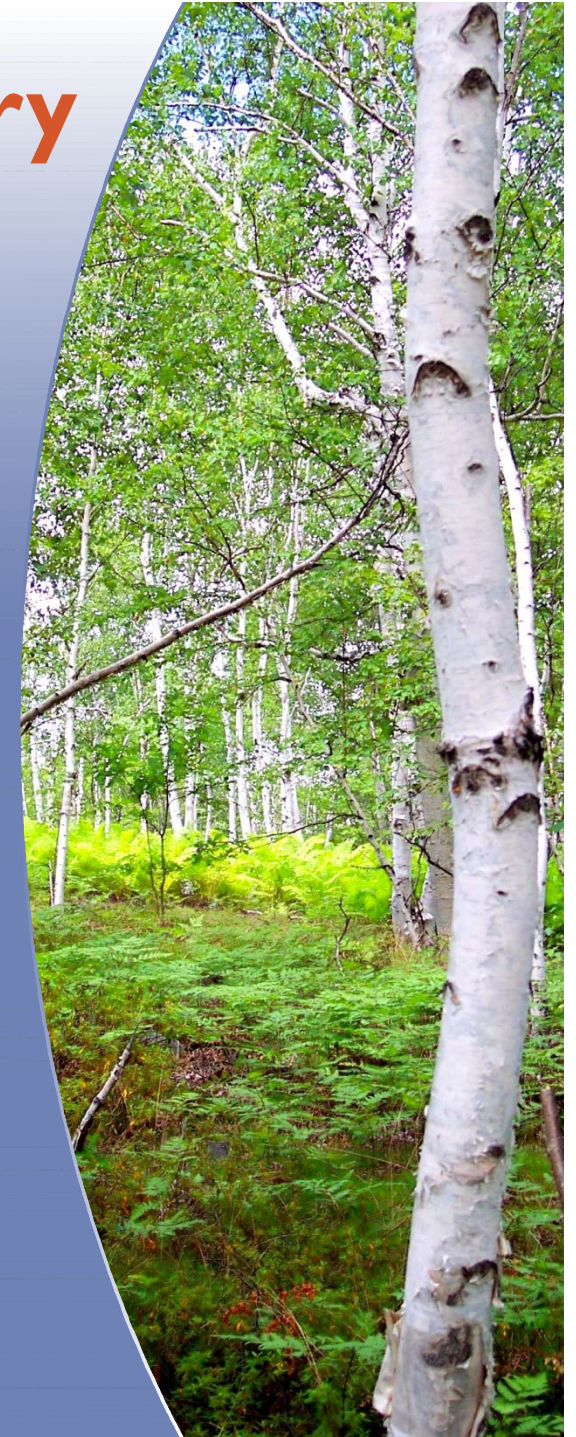
Our Values

- Accountability and Integrity
- Community Needs and Commitment
- Productivity and Excellence
- Research and Innovation
- Growth and Capacity



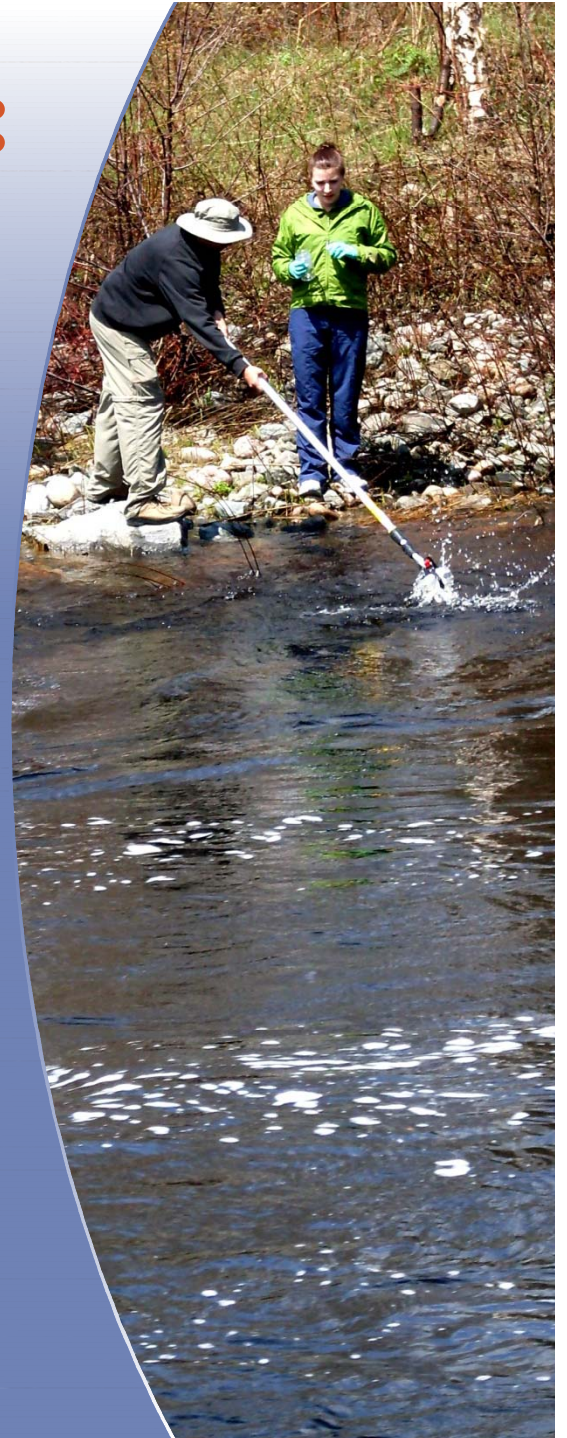
N.D.C.A. in Greater Sudbury

- Small, dedicated team of members and staff
- Wise use of tax dollars received/leverage other funding
- Respected in community
- Annually work to:
 - Protect life and property
 - Keep community green and growing
 - Provide health and wellness opportunities



Our Strategic Directions: 2011 – 2016

- Engage and Collaborate
- Build and Connect Scientific Expertise
- Sustainable and Value-Added Funding



2011 Watershed Investments

- Flood risk reduction/Public safety
- Building community climate change adaptation capacity
- “Community Jewel” – Lake Laurentian Conservation Area
- Municipal Drinking Water Source Protection
- Valuing our watershed resources
- Community stewardship and partnerships

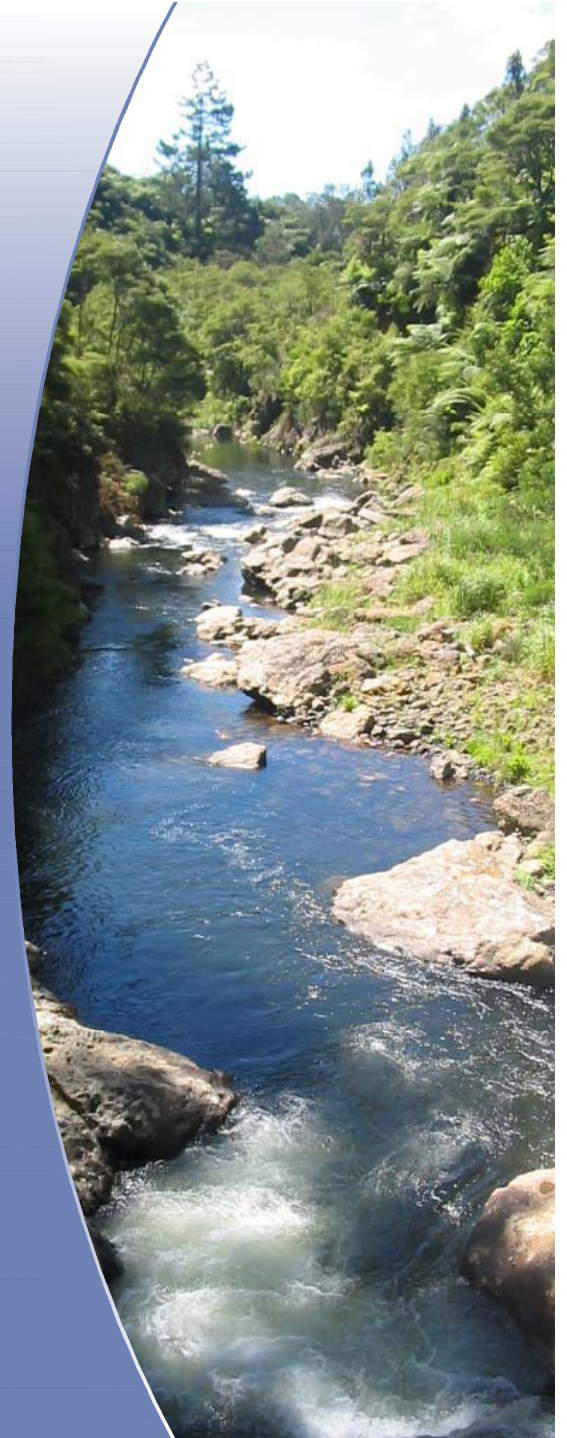


2011 Levy Request

- Total of \$584,156
- Represents \$30,378 increase when compared to 2010



Nickel District
Conservation
Authority



Questions?

Thank-you for your time.

Visit us at:

www.nickeldistrict.ca



Nickel District
Conservation
Authority

