

Connect the Creek!

Junction Creek Waterway Park



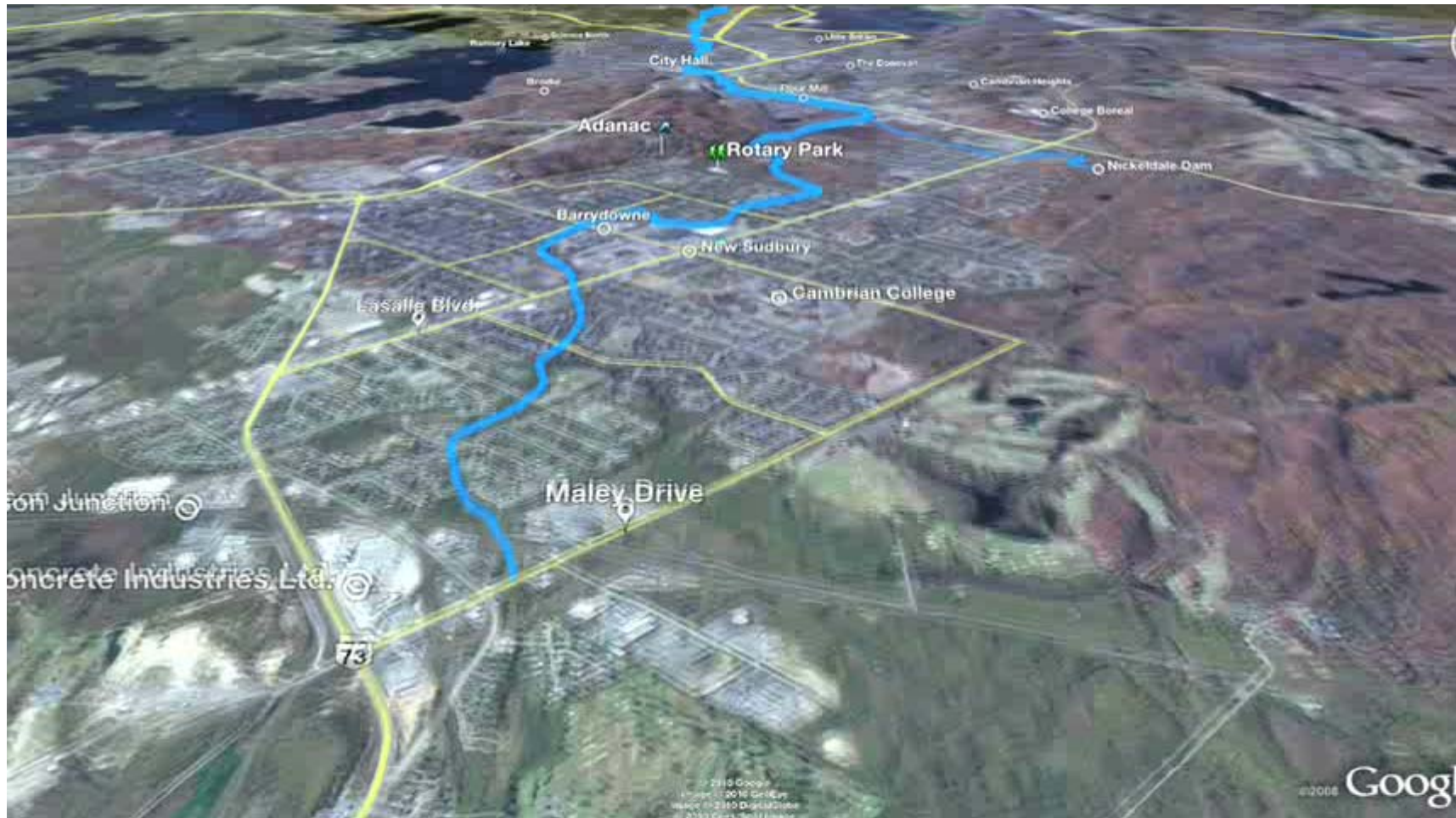
Connect the Creek Partnership

- City of Greater Sudbury
- Rainbow Routes Association
- Junction Creek Stewardship Committee
- Nickel District Conservation Authority
- Other community leaders



Nickel District
Conservation
Authority

18 km Linear Park

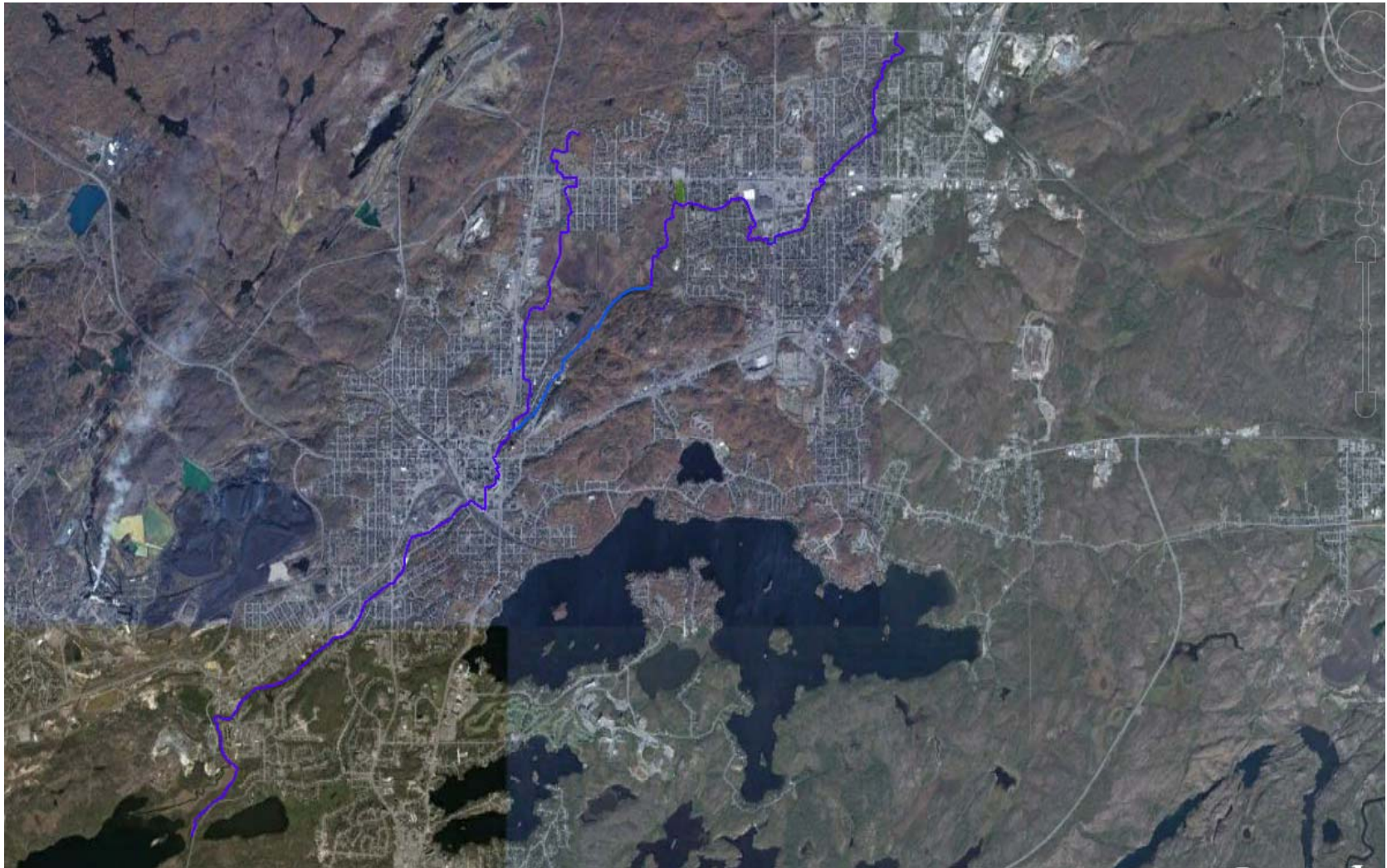


The Challenge

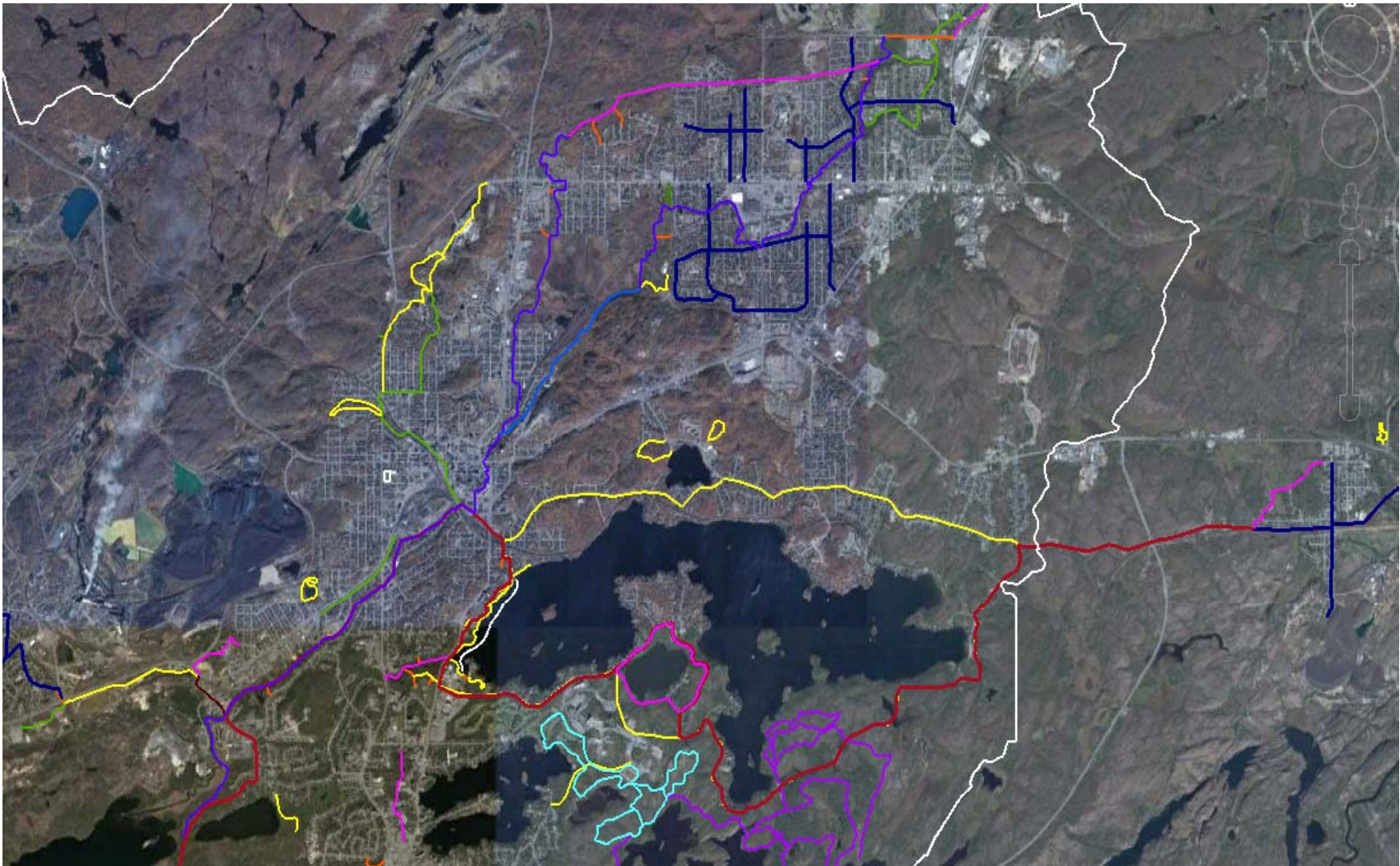
To complete the Park by 2015



Connect the Creek ...



... and connect the city!



Physical Challenges

- Trail Development
- Property acquisition
- Railway & road crossings



Opportunities

- 60% or 11 km completed
- City-owned property
- Committed Partnership
- Sustainable Mobility Plan
- Community Momentum



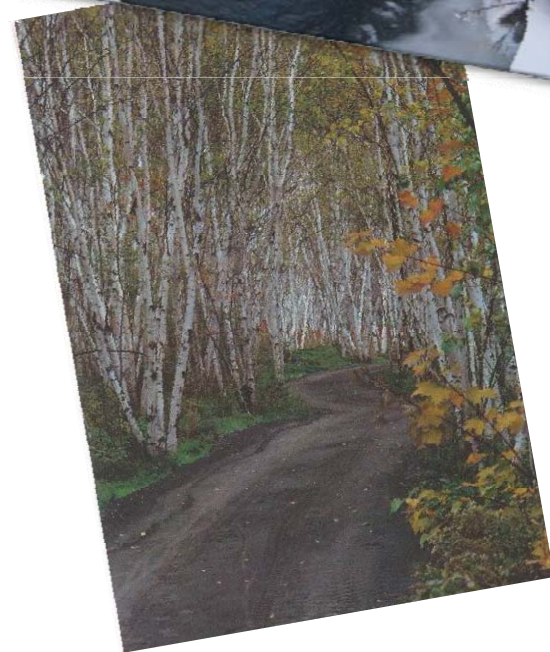
Action Strategy: Investment

- \$214,000 / year for trail development
- Leveraged funding
- % of capital infrastructure
- Other Funding Sources



Community Benefits

- Community image
- Tourist destination
- Healthy lifestyles
- Pedestrian safety
- Precious resource



Vision

To become the most pedestrian friendly city in Ontario by 2015

