

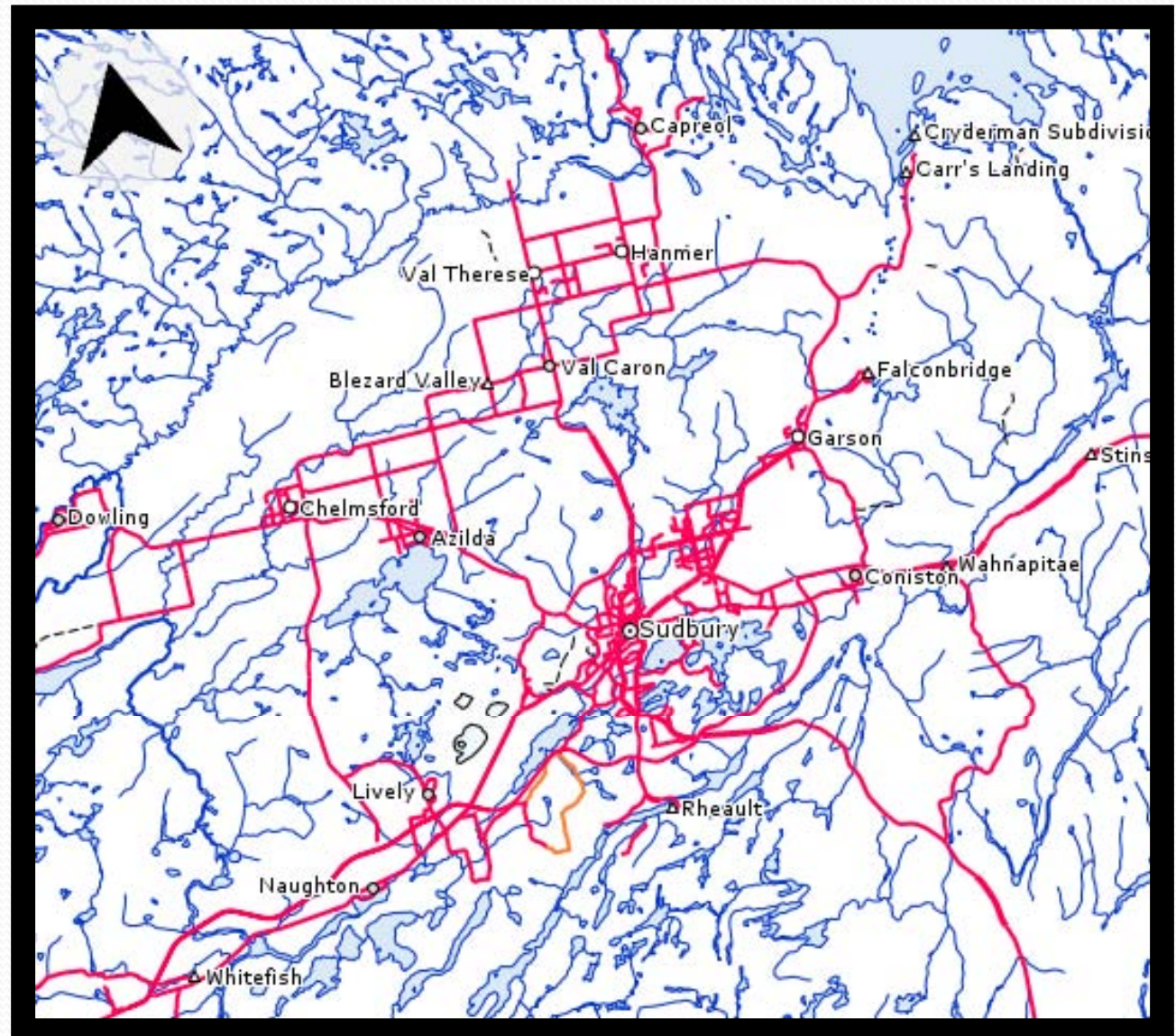


# Proposal to Control Eurasian Water Milfoil in 8 Sudbury Lakes

Greater Sudbury Watershed Alliance  
Eurasian Milfoil Focus Group

# Sudbury is the City of Lakes

- Home to 330 lakes
- Project Includes: Long, Richard, McFarland, Grant, Hannah, Middle, Simon, & St. Charles Lakes



# Aerial View

Lake infested with milfoil (our future?)



# Characteristics of Milfoil:



- Easily transferred to other locations
- Spreads quickly
- Clogs lakes and rivers
- Impacts recreational uses
- Anecdotal evidence that property values may be reduced

# Milfoil: Destroying the City of Lakes



- Over 250 residents attended water forum concerning milfoil
- Issue needs attention
- Will continue to spread damaging all lakes and rivers

# Control Options



- Harvesting causes fragmentation & spread
- Herbicides
- Impermeable barriers: silt settles over barrier enabling re-infestation
- Chlorine pucks : chemical dumping

# Nature's Choice: Weevils

- Weevils eat milfoil
- **NOT an invasive species**
- Already exist in surrounding lakes
- Eco-friendly solution



# Nature's Choice: Weevils

- Boosts Native Population of Weevils
- Self-Regulating – Population declines with food source
- Collected and cultured locally
- Technology developed by EnviroScience Inc.



# Nature's Choice: Weevils



- No permits required
- Safe for humans & pets
- Eco-friendly
- Long term control



## Ontario Success Stories:

- Puslinch Lake
- Clear Lake in Espanola



# Reductions after just 1 year



# The Weevil Project



	Year 1	Year 2	Year 3
Public Education	<ul style="list-style-type: none"><li>• Signage</li><li>• Newsletters</li></ul>	<ul style="list-style-type: none"><li>• Signage</li><li>• Newsletters</li></ul>	<ul style="list-style-type: none"><li>• Signage</li><li>• Newsletters</li></ul>
	<ul style="list-style-type: none"><li>• Media</li><li>• Water Forums</li></ul>	<ul style="list-style-type: none"><li>• Media</li><li>• Water Forums</li></ul>	<ul style="list-style-type: none"><li>• Media</li><li>• Water Forums</li></ul>
Weevil Population	50% of total population	30% of total population	20% of total population
Monitoring	Continue monitoring, evaluating & reporting of progress		
Cost	\$94,000	\$46,000	\$34,000

# Economy of Scale

- Example: Richard Lake
- In 2006 quote of \$48,000, for a 3 year project
- Better price for 8 lakes as opposed to 1
- $\$174,000 / 8 \text{ lakes} = \$21,750$  per lake for a 3 year project



# Summary

- Environmentally friendly
- Proven track record in Ontario
- Cost-effective
- 2011 - \$94,000
- 2012 - \$46,000
- 2013 - \$34,000
- Total - \$174,000

