

Request for Decision

Traffic Control - Various Intersections

Presented To:	Traffic Committee
Presented:	Monday, Aug 23, 2010
Report Date	Tuesday, Aug 17, 2010
Type:	Managers' Reports

Recommendation

That a by-law be passed by City Council to amend Traffic and Parking By-Law 2010-1 in the City of Greater Sudbury to implement the attached list of recommended changes all in accordance with the report from the General Manager of Infrastructure Services dated August 23, 2010.

BACKGROUND

The City's Transportation and Traffic Engineering Services section received requests from operations staff and residents to review traffic control at various intersections throughout the City of Greater Sudbury.

The recommended traffic control for each intersection is described below.

1) Montcalm Avenue and Patterson Street, Sudbury

Patterson Street intersects Montcalm Avenue forming a cross intersection. This intersection is located one block east of MacKenzie Street in Ward 12 (see Exhibit 'A'). Patterson Street ends just east of Montcalm Avenue and is considered the minor roadway.

A Yield sign is appropriate when the traffic volume is low, sight lines are good and stopping is not always required. Sight lines are restricted in the northeast corner of the intersection by a cement retaining wall, a large tree, a bush and a utility pole. In the southeast corner, visibility is restricted by a wood fence and the vertical curve in the roadway (see Exhibit 'B').

The recommended traffic control at this intersection was deferred at the April 27, 2010 meeting of the Traffic Committee to determine if the sight line obstructions could be removed. As indicated above, due to the permanent nature of the restrictions it is recommended that traffic be controlled with Stop signs facing eastbound and westbound traffic on Patterson Street.

2) Glenbower Crescent at Beverley Street, Wahnapiatae

The east end of Beverley Street intersects Glenbower Crescent forming a "T" intersection. This intersection is located approximately 170 metres south of Highway 17 in Ward 9 (see Exhibit 'C'). This intersection is currently uncontrolled.

Signed By

Report Prepared By

Dave Kivi
Co-ordinator of Transportation & Traffic
Engineering Services
Digitally Signed Aug 17, 10

Division Review

Robert Falcioni, P.Eng.
Director of Roads and Transportation
Services
Digitally Signed Aug 17, 10

Recommended by the Department

Greg Clausen, P.Eng.
General Manager of Infrastructure
Services
Digitally Signed Aug 17, 10

Recommended by the C.A.O.

Doug Nadorozny
Chief Administrative Officer
Digitally Signed Aug 19, 10

Uncontrolled intersections have no Stop or Yield signs and operate under the "Right of Way Rule." Under this rule, when vehicles approach the intersection at the same time, the driver on the left yields right of way to the vehicle on the right. Uncontrolled intersections are becoming less common in urban areas, and unnecessary conflicts may be created.

A Yield sign is appropriate when the traffic volume is low, sight lines are good and stopping is not always required. At this intersection all of these conditions are met, therefore it is recommended that traffic be controlled with a Yield sign facing eastbound traffic on Beverley Street.

3) Claudette Street at Langdon Street, Blezard Valley

At the City Council meeting of January 13th, 2010, Councillor Dupuis submitted a petition requesting a 3-way stop at Claudette and Langdon Streets in Blezard Valley (see Exhibit "F"). Langdon Street intersects Claudette Street forming a "T" intersection. This intersection is located one block east of Martin Road in Ward 5 (see Exhibit 'G'). Recently, Claudette Street was extended west of Langdon Street for a new subdivision. This intersection is currently uncontrolled.

The subject intersection was counted on June 23, 2010, and City Staff completed an All-Way Stop warrant based on Council's new reduced criteria for local roads. The traffic volume passing through the intersection was very low, and is only 3% of the minimum requirement. A review of our collision information for 3 years shows that there have been no collisions at the intersection. Based on the above information, an All-Way Stop is not warranted.

As previously described, the subject intersection is uncontrolled. Uncontrolled intersections have no stop or yield signs and operate under the "Right of Way Rule." Under this rule, when vehicles approach the intersection at the same time the driver on the left yields right of way to the vehicle on the right. Uncontrolled intersections are becoming less common in urban areas, and unnecessary conflicts may be created.

A Yield sign is appropriate when the traffic volume is low, sight lines are good and stopping is not always required. At this intersection all of these conditions are met, therefore it is recommended that traffic be controlled with a Yield sign facing southbound traffic on Langdon Street.

4) Vaughan Avenue at Shaw Street, Capreol

Shaw Street intersects Vaughan Avenue forming a cross intersection. This intersection is located 2 blocks east of Dennie Street in Ward 7 (see Exhibit 'D'). This intersection is currently controlled with a Yield sign facing southbound traffic only on Shaw Street. With a Yield Sign on only 1 approach, unnecessary conflicts may be created.

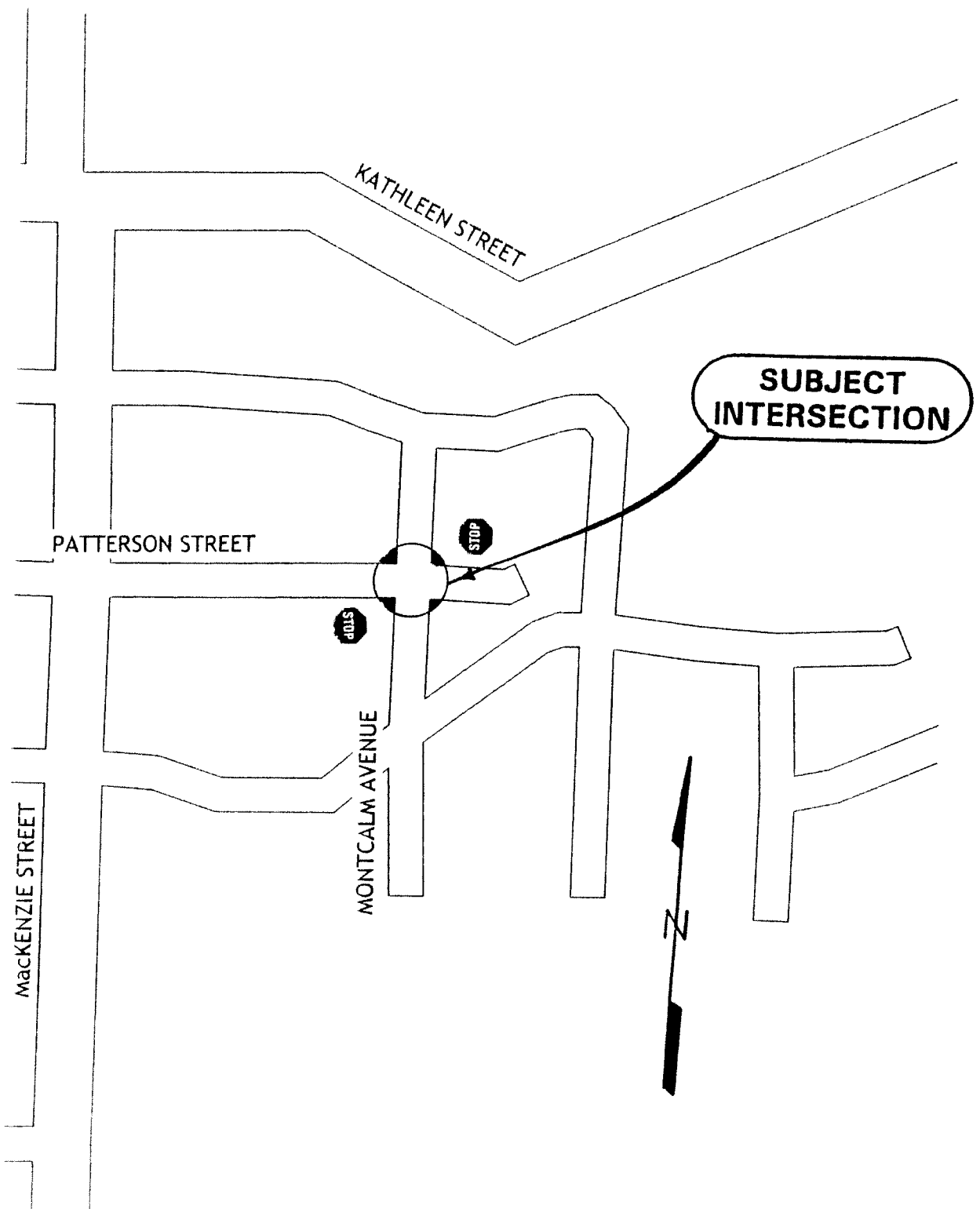
A Yield sign is appropriate when the traffic volume is low, sight lines are good and stopping is not always required. At this intersection all of these conditions are met, therefore it is recommended that traffic be controlled with an additional Yield sign facing northbound traffic on Shaw Street.

5) Old Falconbridge Road at Matson Road, Garson

Matson Road intersects Old Falconbridge Road forming a "T" intersection. This intersection is located one block north of Maley Drive in Ward 7 (see Exhibit 'E'). This intersection is currently controlled with a Stop sign facing southbound traffic on Matson Road.

A Yield sign is appropriate when the traffic volume is low, sight lines are good and stopping is not always required. At this intersection all of these conditions are met, therefore it is recommended that traffic control be changed from a Stop sign to a Yield sign for southbound traffic on Matson Road.

EXHIBIT: A




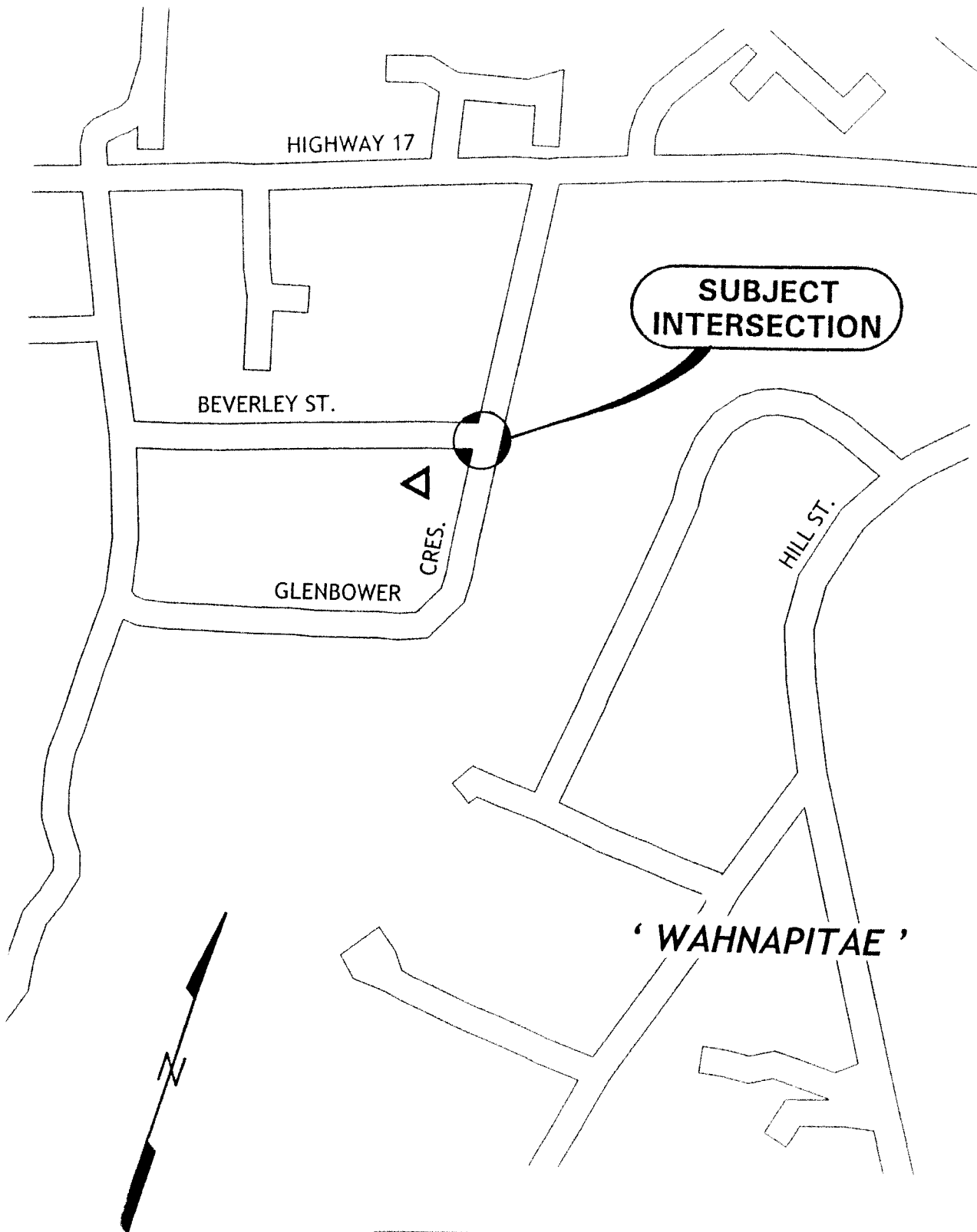
 Sudbury	MONTCALM AVENUE and PATTERSON ST., SUDBURY		
	TRAFFIC CONTROL - VARIOUS INTERSECTIONS		
	DATE: 01/01/01	BY: [Signature]	1/1

EXHIBIT: C




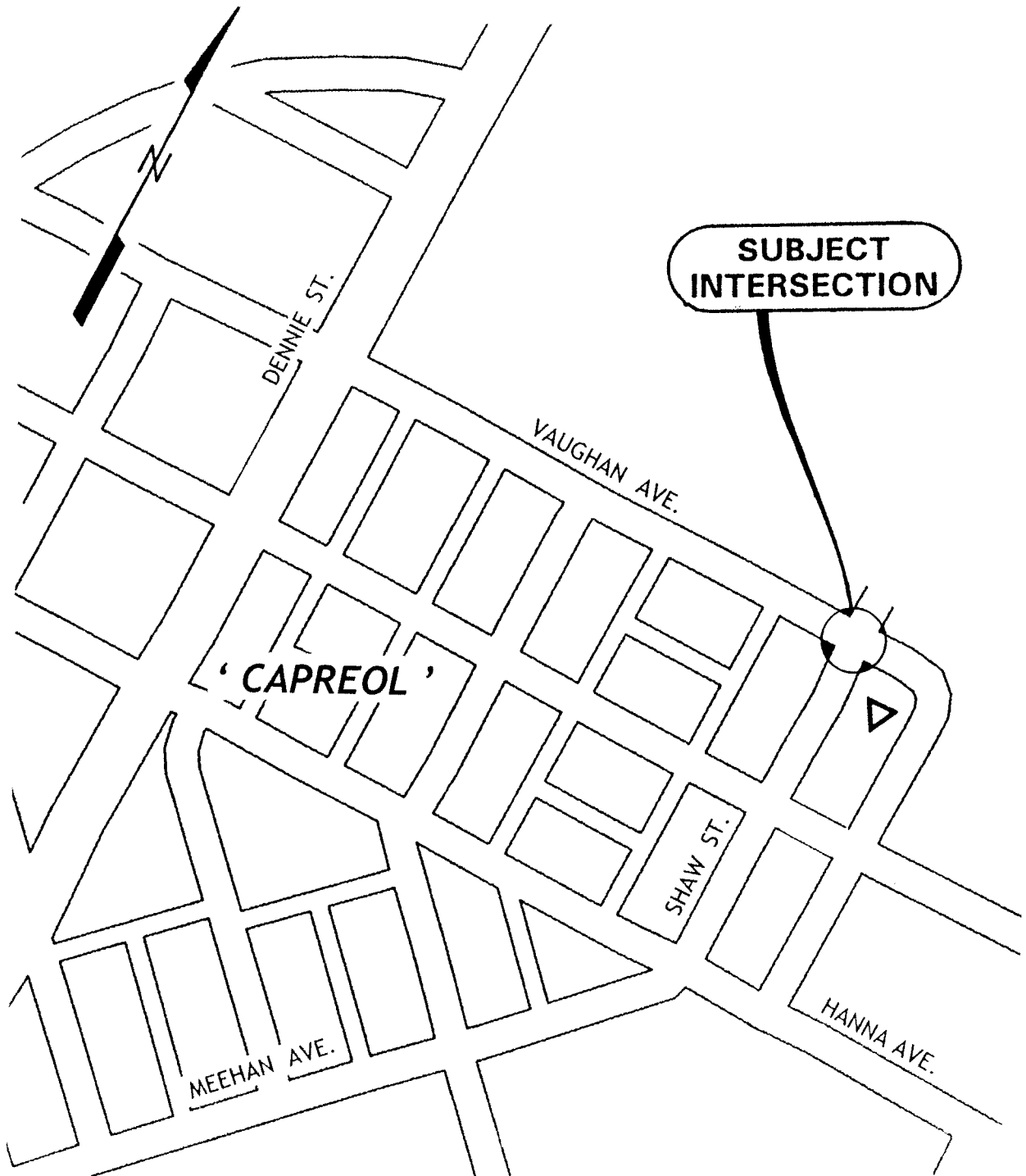
 Sudbury	GLENBOWER CRESCENT at BEVERLEY STREET, WAHNAPITAE	
	TRAFFIC CONTROL - VARIOUS INTERSECTIONS	
NOT TO SCALE		2010-07-16

EXHIBIT: D



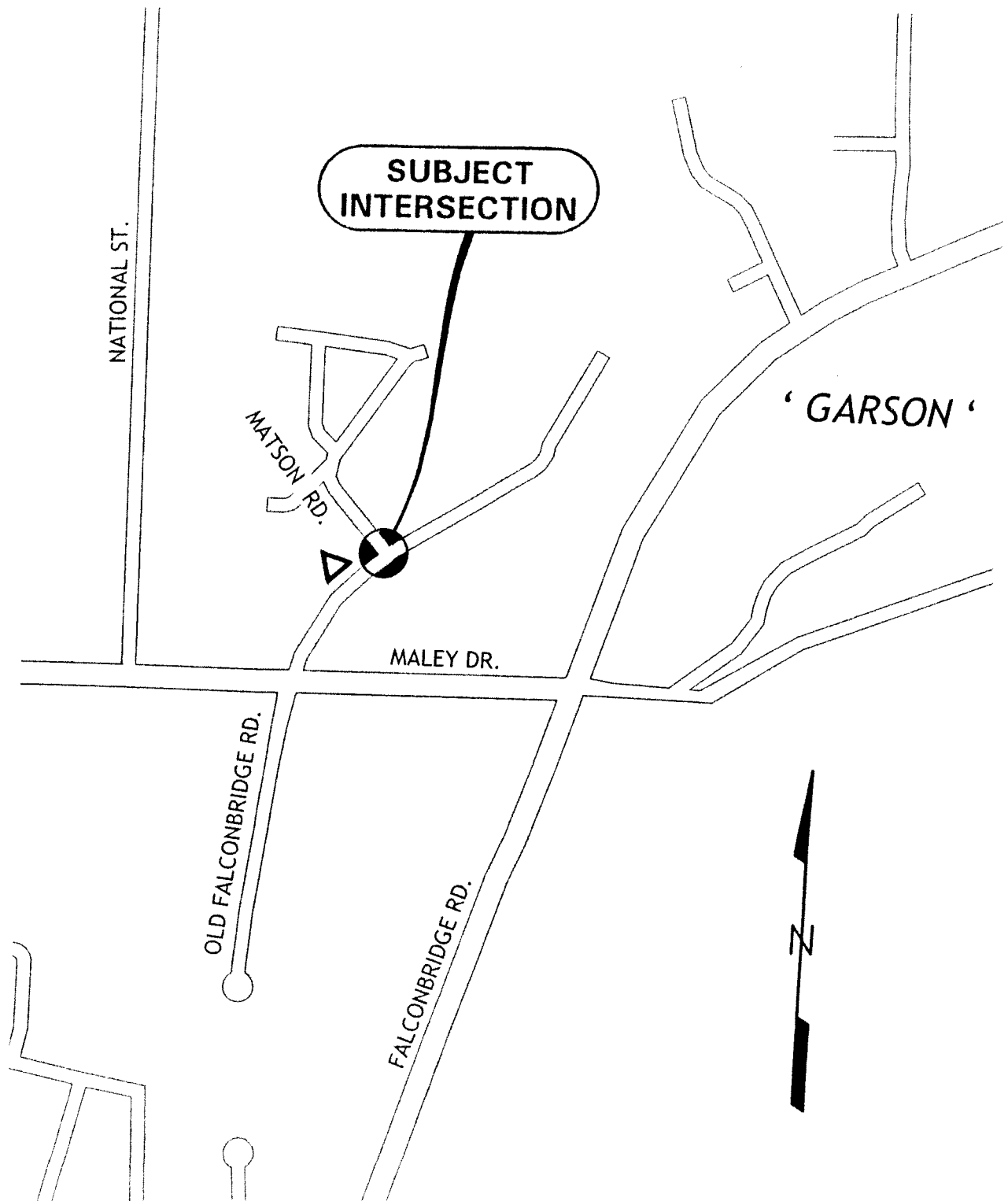
VAUGHAN AVENUE at
SHAW STREET, CAPREOL

TRAFFIC CONTROL VARIOUS INTERSECTIONS

NOT TO SCALE

1000 07 00

EXHIBIT: E



OLD FALCONBRIDGE ROAD at
MATSON ROAD, GARSON

TRAFFIC CONTROL - VARIOUS INTERSECTIONS

501 TO 504

505 TO 506



INTEROFFICE MEMO

DATE: January 19, 2010
TO: G. Clausen, General Manager of Infrastructure Services
FROM: A. Haché, City Clerk
RE: **Petition – 3-way Stop at Claudette & Langdon Streets, Blezard Valley**

At the City Council meeting of January 13th, 2010, Councillor Dupuis submitted a petition to the City Clerk requesting a 3-way stop at Claudette & Langdon Streets in Blezard Valley signed by approximately 26 residents.

Attached is a copy of the first page of the petition. The complete petition is available in the Clerk's Office.

Please review this matter and advise the principal petitioner of recommendations or actions taken regarding their request.

A handwritten signature in cursive script that reads 'A. Haché'.

Angie Haché
City Clerk

/fb

Attachment

cc: R. Falcioni, Director of Roads & Transportation

EXHIBIT: F

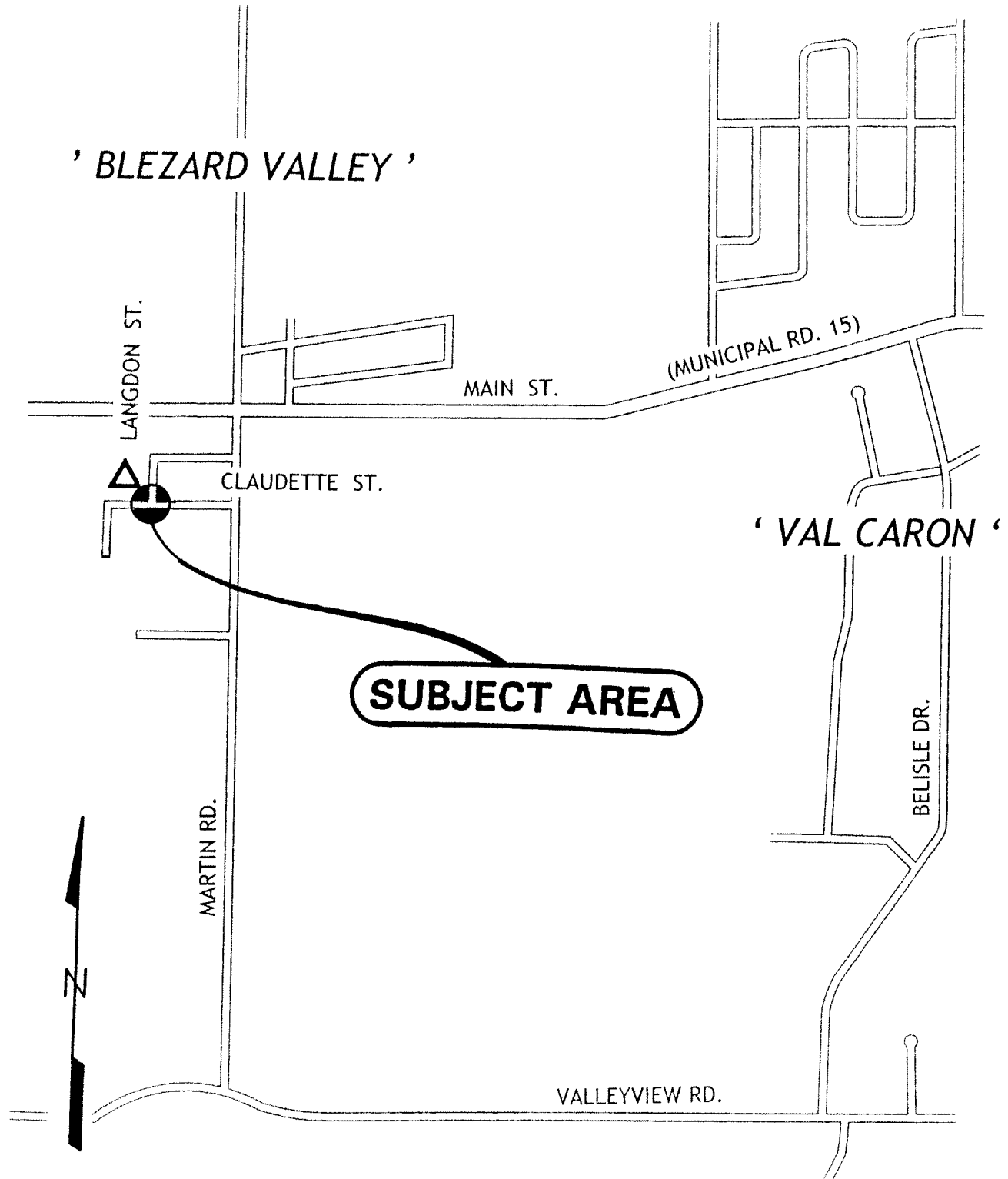
We the undersigned residents are hereby requesting the installation of a 3-way stop at Claudette Street and Langdon Street. There is a new subdivision being built at the end of Claudette Street and there have been numerous vehicles taking the ditch. The posted speed limit is not being followed and with a playground bordering the extension of Claudette Street, we feel it has become very unsafe for pedestrians as well as residents when exiting their driveways. We urge you to please give serious consideration to this reasonable request.

Name

Address

Ken Dupuis	2652 Main St.
Art Dupuis	2720 Claudette
G. Legend	2665 Claudette, Blyard
Lise Legend	2665 Claudette St Blyard Valley
SHAUN BOY	2680 CLAUDETTE ST- Blyard Valley
Eric Comeau	2680 Claudette st.
Jen Comeau	2680 Claudette st.
Marcel Rainville	2686 Claudette st. Blyard Val.
Leanne Rainville	2686 Claudette st. Blyard Val.
Georgina Rainville	2699 Rue Claudette Blyard Valley
Francine Rainville	2699 Rue Claudette Blyard Valley
[Signature]	2737 Claudette Blyard Valley
[Signature]	2737 Claudette Blyard Valley
Yvonne Carrière	2681 Kingston Blyard Valley

EXHIBIT: G



CLAUDETTE STREET at
LANGDON STREET, BLEZARD VALLEY

SCHOOL ZONE SPEED LIMIT VARIOUS SCHOOLS

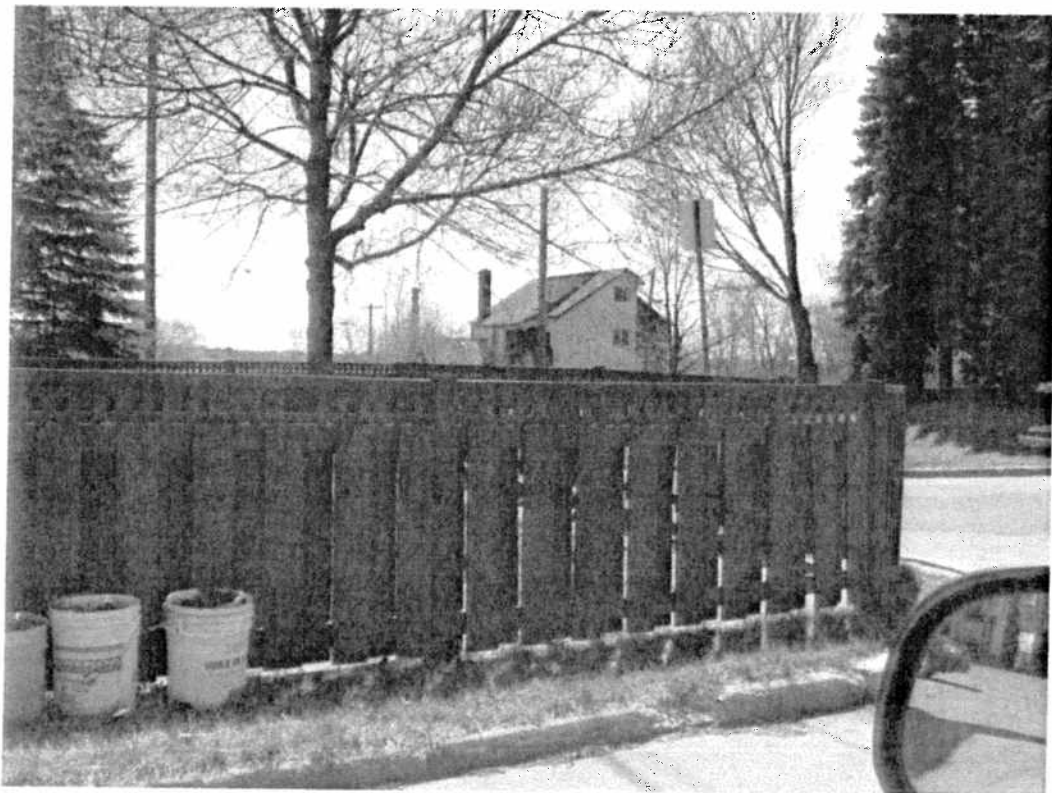
NOT TO SCALE

2010 07 16

EXHIBIT: B



Northeast corner of the intersection



Southeast corner of the intersection

List of Recommendations

1. That the Montcalm Avenue and Patterson Street intersection be controlled with Stop signs facing eastbound and westbound traffic on Patterson Street.
2. That the Glenbower Crescent and Beverley Street intersection be controlled with a Yield sign facing eastbound traffic on Beverley Street.
3. That the Claudette Street and Langdon Street intersection be controlled with a Yield sign facing southbound traffic on Langdon Street.
4. That the Vaughan Avenue and Shaw Street intersection be controlled with a Yield sign facing northbound traffic on Shaw Street.
5. That traffic control at the Old Falconbridge Road and Matson Road intersection be changed from a Stop sign facing southbound traffic on Matson Road to a Yield sign facing southbound traffic on Matson Road.