

Presented To:	Operations Committee
Presented:	Monday, Aug 12, 2019
Report Date	Thursday, Jul 18, 2019
Type:	Managers' Reports

Request for Decision

Traffic Control - Buckingham Drive at Fairmount Drive

Resolution

THAT the City of Greater Sudbury controls the intersection of Buckingham Drive and Fairmount Drive with a Yield sign facing northbound traffic;

AND THAT staff be directed to prepare a by-law to amend Traffic and Parking By-Law 2010-1 in the City of Greater Sudbury to implement the recommended changes, as outlined in the report entitled "Traffic Control – Buckingham Drive and Fairmount Drive", from the General Manager of Growth and Infrastructure, presented at the Operations Committee meeting on August 12, 2019.

Relationship to the Strategic Plan / Health Impact Assessment

This report refers to operational matters.

Report Summary

This report will provide recommendations for appropriate traffic control at the intersection of Buckingham Drive and Fairmount Drive.

Financial Implications

Recommendations of this report may be carried out within existing approved operating budget.

Signed By

Report Prepared By

Soutsay Boualavong
Traffic/Trans Eng Analyst
Digitally Signed Jul 18, 19

Manager Review

Joe Rocca
Traffic and Asset Management
Supervisor
Digitally Signed Jul 18, 19

Division Review

Akli Ben-Anteur
Project Engineer
Digitally Signed Jul 18, 19

Financial Implications

Jim Lister
Manager of Financial Planning and
Budgeting
Digitally Signed Jul 24, 19

Recommended by the Department

Tony Cecutti
General Manager of Growth and
Infrastructure
Digitally Signed Jul 26, 19

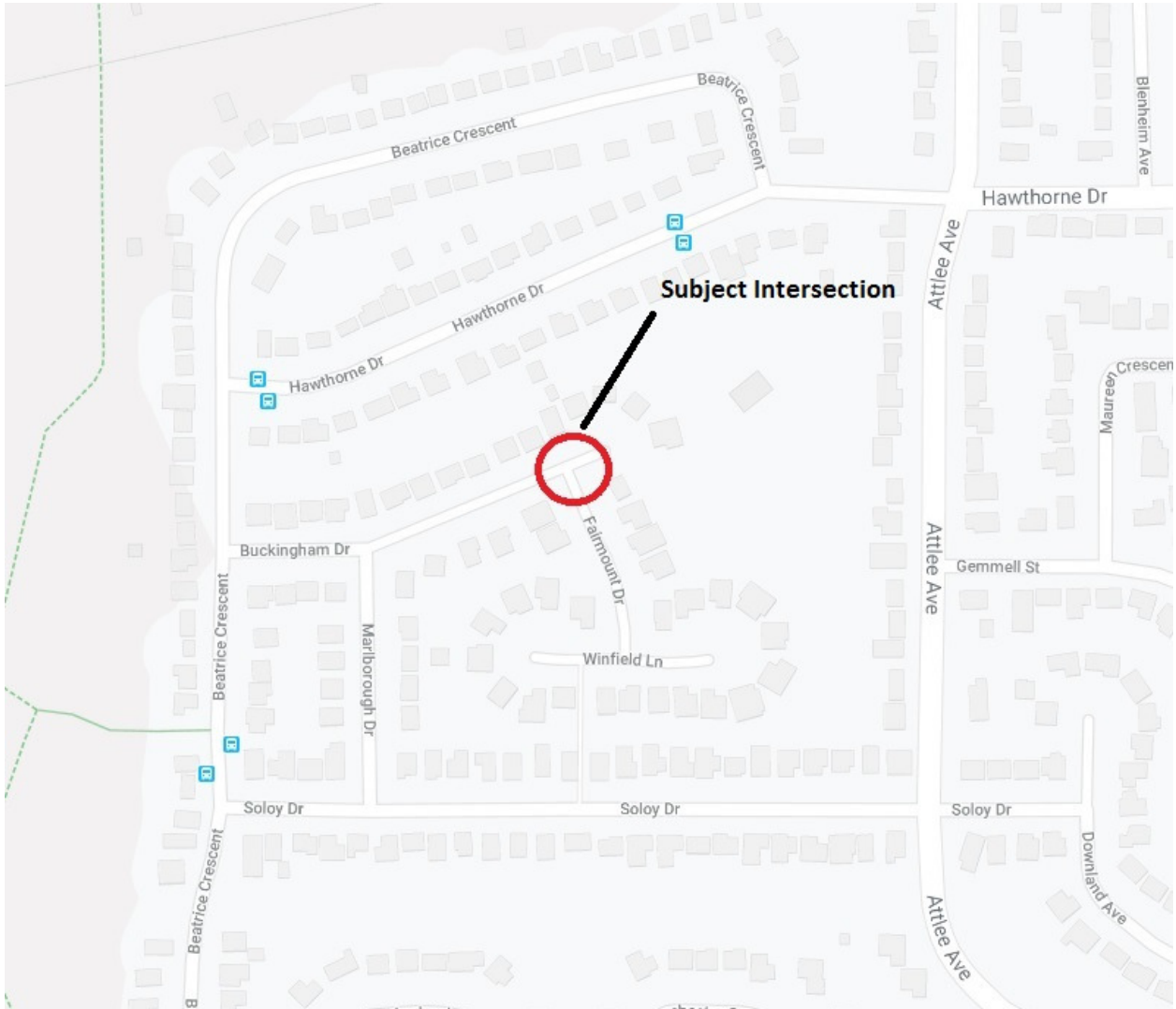
Recommended by the C.A.O.

Ed Archer
Chief Administrative Officer
Digitally Signed Jul 29, 19

Traffic Control – Buckingham Drive and Fairmount Drive

Background

The Transportation and Innovation Services section has received a request to review the traffic control at the intersection of Buckingham Drive and Fairmount Drive in New Sudbury.



Fairmount Drive intersects Buckingham Drive forming a “T” intersection. Currently, the intersection is controlled by a Stop sign facing northbound traffic on Fairmount Drive. Traffic volumes are low at this intersection with adequate sight lines in all directions. A Yield sign is appropriate when the traffic volume is low, sight lines are good and stopping is not always

required. It is recommended that the existing Stop sign be changed to a Yield sign facing northbound traffic on Fairmount Drive.