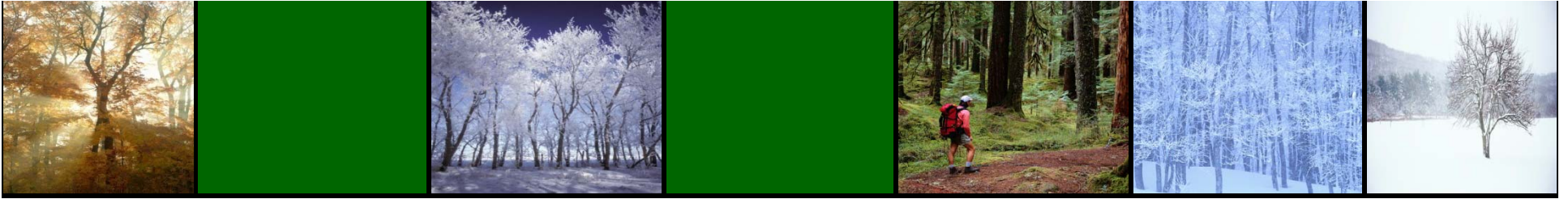


City of Greater Sudbury Green Space

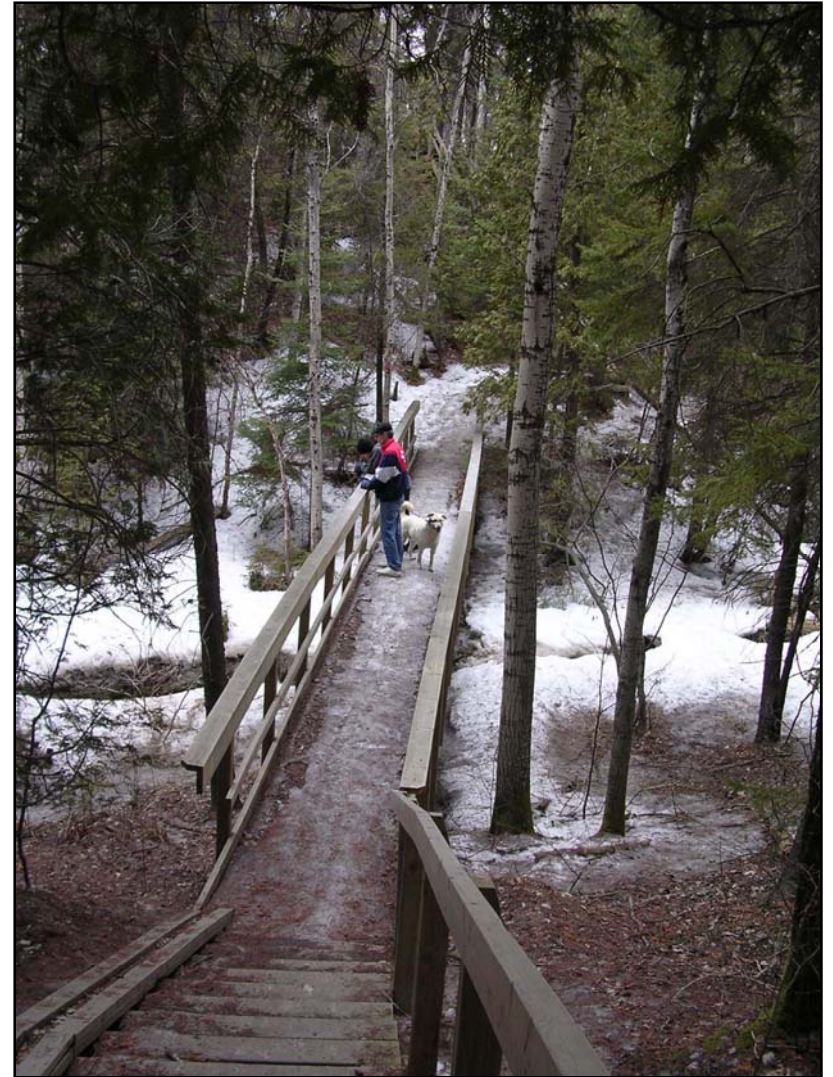


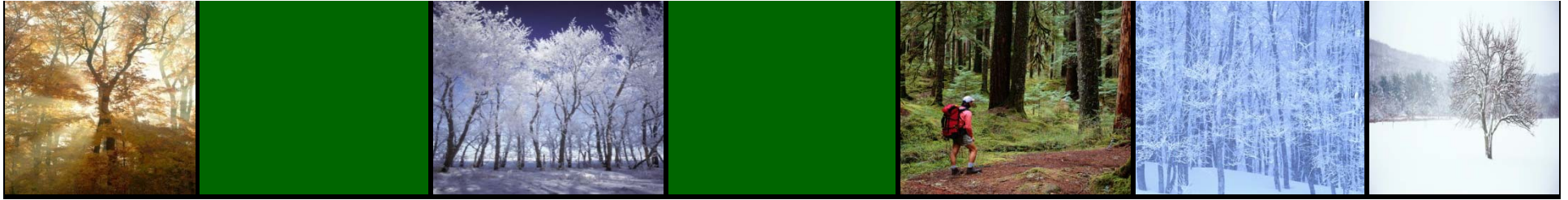
February 17, 2010



Green Space Advisory Panel Of Council

- ✿ Appointed in October of 2007 to assist Council and staff in the implementation of the Parks and Open Space Master Plan and the Official Plan;
- ✿ This Advisory Panel has a defined composition and mandate
- ✿ Twenty-seven individuals serve on this Panel





The Citizens

- ✿ The panel consists of 14 citizens members appointed by Council representing most wards including:

Ward 1 – Gerard Courtin

Ward 2 – (Franco Mariotti)

Ward 3 – Lorne Taylor, Warren Maskell

Ward 4 – Don Brisbois

Ward 5 – Michel Lauzon

Ward 6 – Elaine Comacchio-Blais

Ward 7 – Keir Kitchen

Ward 8 – No appointment

Ward 9 – Roel Teunissen, Robert Hanson

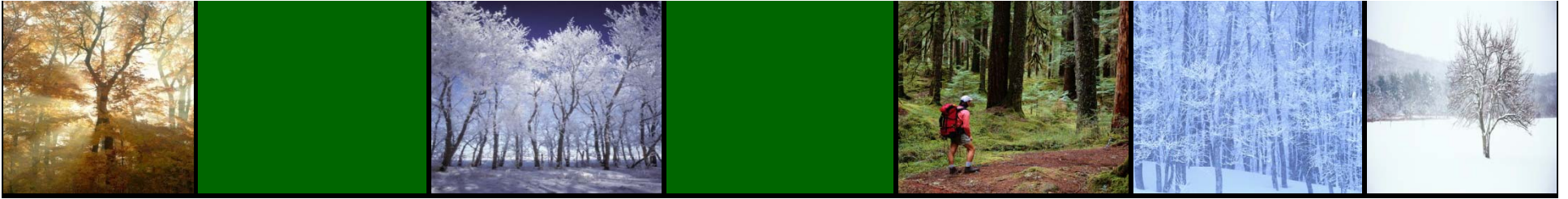
Ward 10 – Samantha Baulch, Naomi Grant, Dr. Beaumont Nelson

Ward 11 – John Rauh

Ward 12 – Will Morin

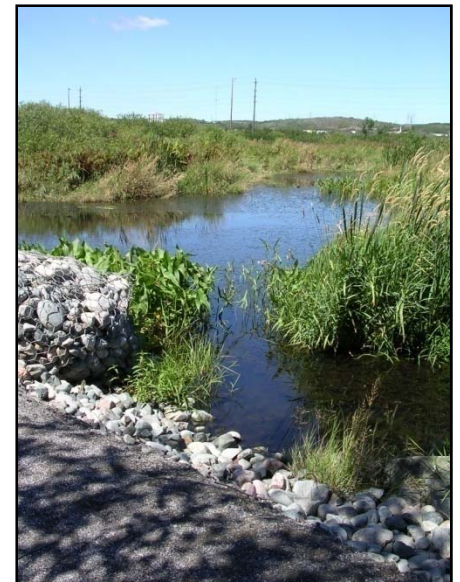
- ✿ This provides input from every part of the City and contributes to the broadest consensus with respect to the way forward;

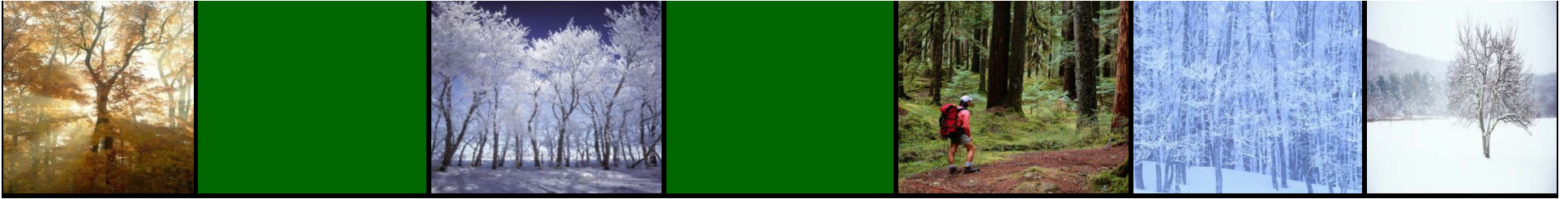




The Experts

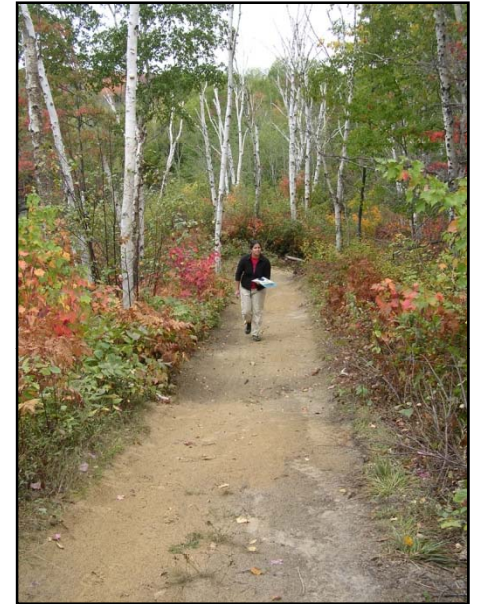
- ✦ The following individuals were appointed on the basis of their community service and expertise with respect to green space issues:
 - Franco Mariotti - Biologist, Environmental Activist, Science North link (Ward 2)
 - Dr. Stephen Monet - Ecologist, Wetlands Specialist, Natural Heritage Background Study (Ward 10)
 - Dr. Peter Beckett - Botanist, Ecologist, Community Environmentalist (Ward 11)
 - Paul Sajatovic - Nickel District Conservation Authority
 - Will Kershaw - Ministry of Natural Resources Parks Planner (Ward 1)
 - Deb McIntosh - Executive Director of Rainbow Routes (Ward 9)

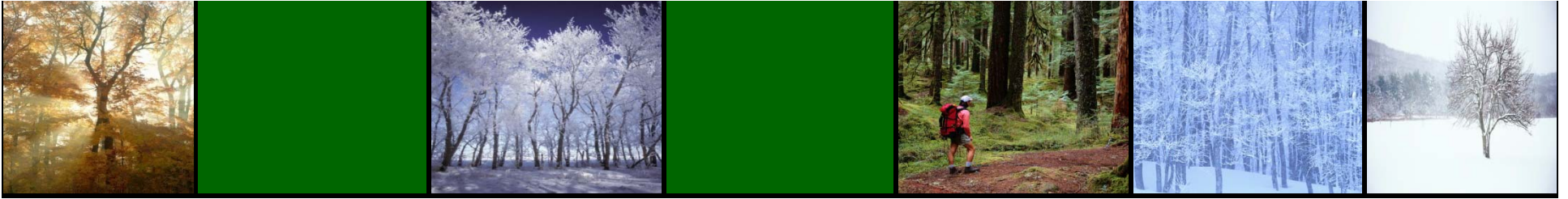




Staff

- ✿ Selected for their green space expertise and abilities to implement recommendations proposed;
- ✿ Staff implementation team consists of:
 - Real Carré - Director of Leisure Services
 - Chris Gore - Manager of Community Partnerships
 - Bill Lautenbach - GM of Growth and Development
 - Paul Baskcomb - Acting Director of Planning Services
 - Keith Forrester - Real Estate Coordinator
 - Ian Wood - Chief of Staff to the Mayor
 - Kris Longston - Senior Planner
 - Krista Carre - Senior Planning Technician

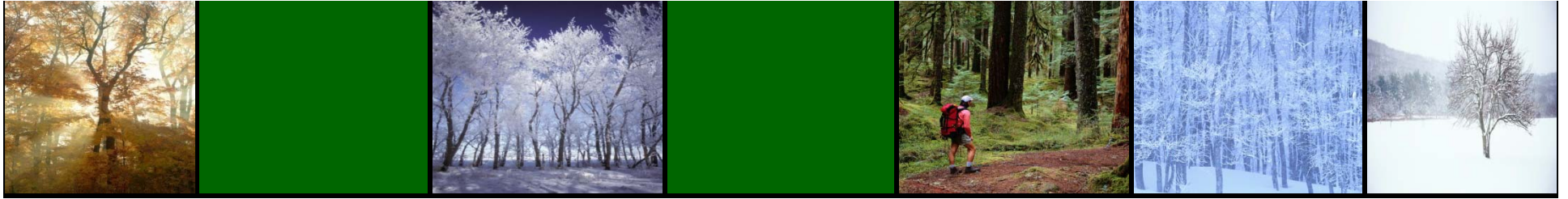




Green Space Advisory Panel's Mandate

- Recommend to Council a Parks and Open Space Classification System
- Recommend to Council natural assets to be considered for inclusion in City's parks and open space system

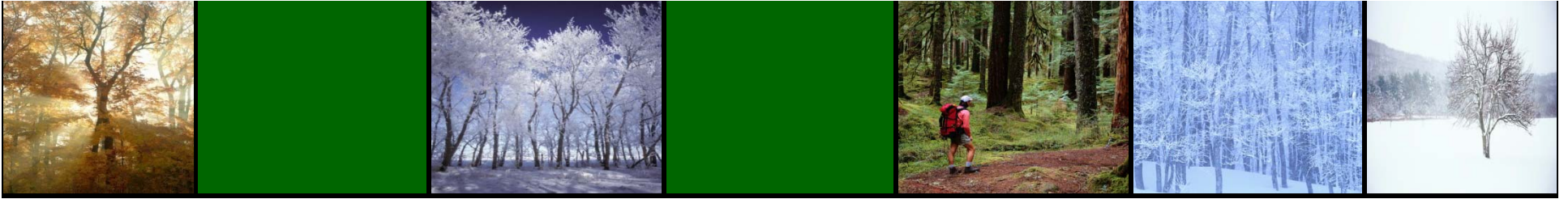




Green Space Advisory Panel's Mandate

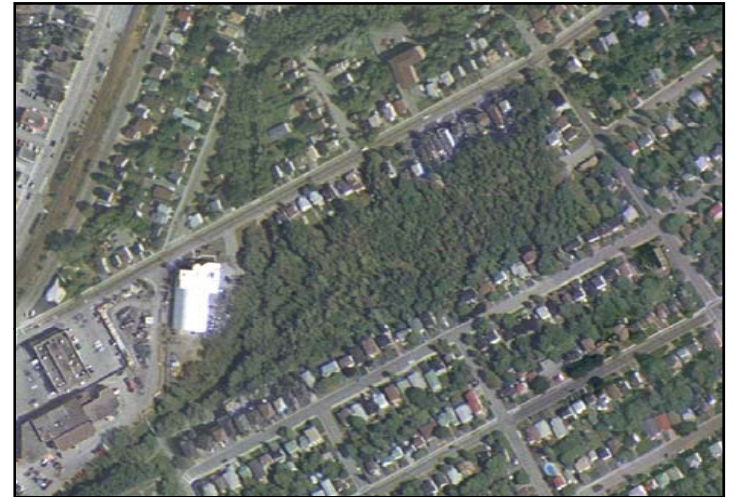
- ✿ Recommend to Council a rating or evaluation system which might be utilized for establishing parks and open space acquisition priorities;
- ✿ Recommend to Council which City properties should be included in the parks & open space portfolio and which Leisure Services/parks & open space properties should be declared surplus and disposed of as per Official Plan policy 7.2.1 (8)

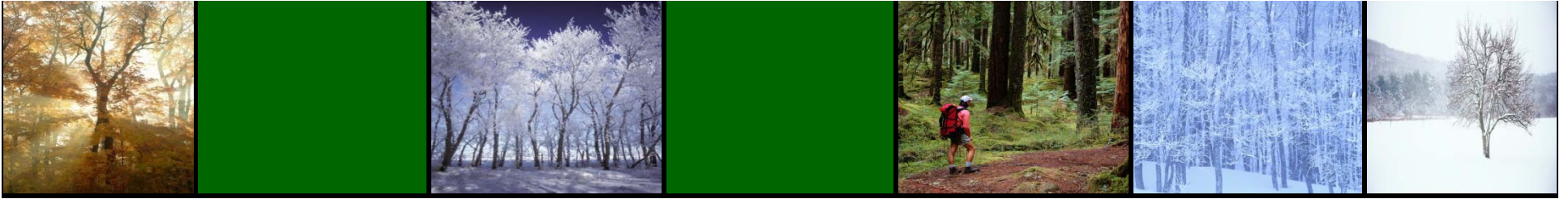




Advisory Panel's Work to Date

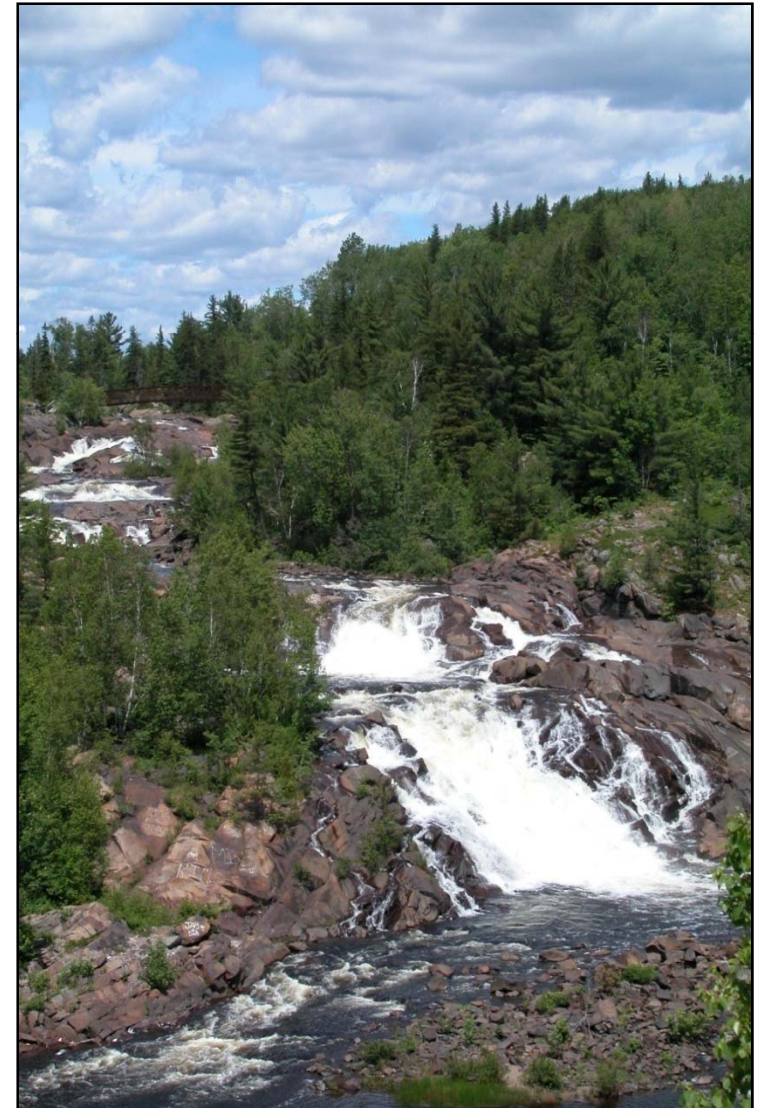
- ✿ The Panel has met 14 times over the past two and a half years
- ✿ During this time frame the panel has drafted the following items for Council's consideration:
 1. A Parks Classification System
 2. A list of existing parks classified
 3. A rating structure for potential acquisitions
 4. A list of potential green space acquisition sites; and
 5. A Surplus Parkland Disposal Policy

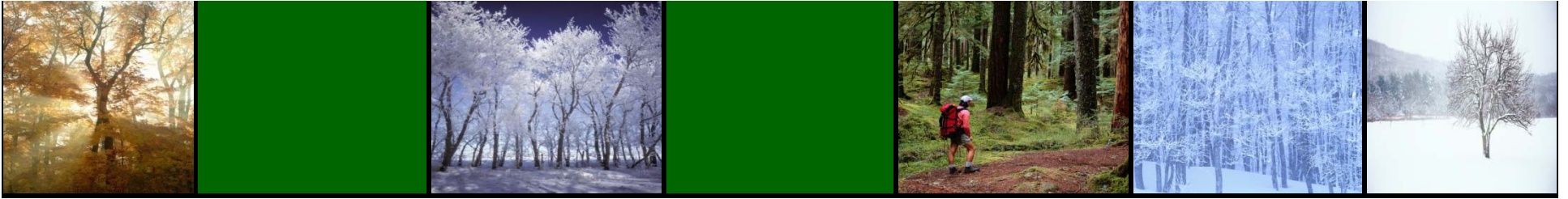




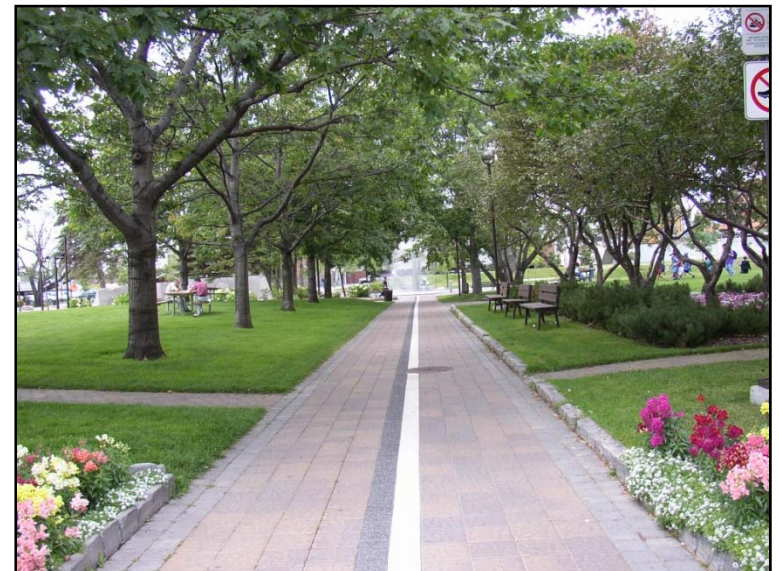
Green space is a term commonly used to denote:

- ✿ Parkland, greenways, open space, natural heritage or environmentally sensitive lands, vacant lands and lands such as golf courses, cemeteries, agricultural lands or green infrastructure including drainage swales





- ✿ The advisory panel considered, green space in its broadest context with the aim that priority sites would ultimately become public space;
- ✿ Private green space protection may be subject to a future mandate but was not the priority of this panel

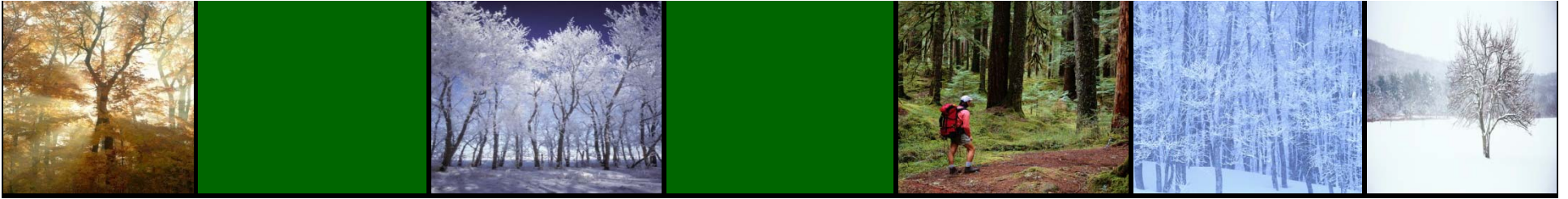




Why Green Space?

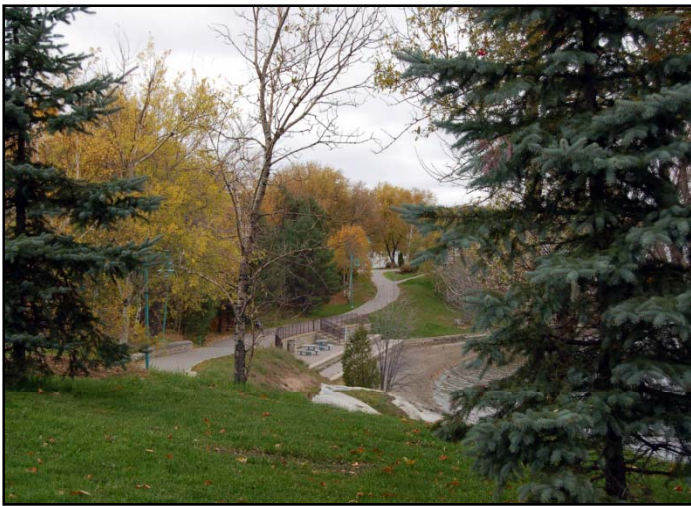
- Green space is a valued amenity
 - Outdoor recreation opportunities
 - Neighbourhood and community image
 - Aesthetics
 - A variety of society benefits

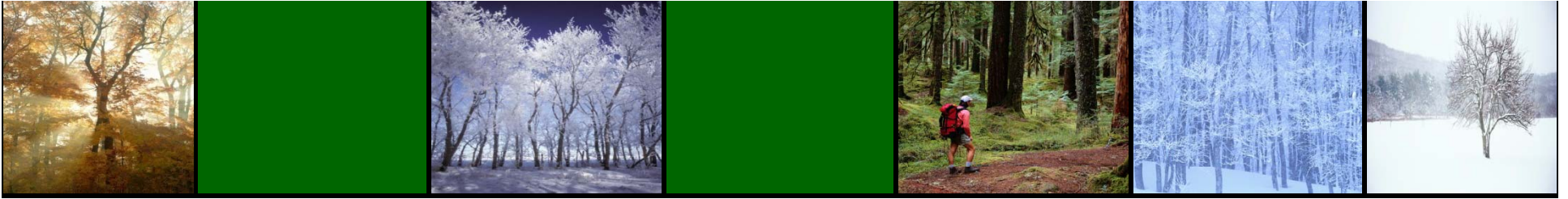




Green Space benefits to society include:

- Environmental benefits - wildlife habitat, biological diversity, water storage and filtration and air quality/climate moderation;
- Economic benefits - enhanced property values, tourism opportunities, beautification and improved quality of life



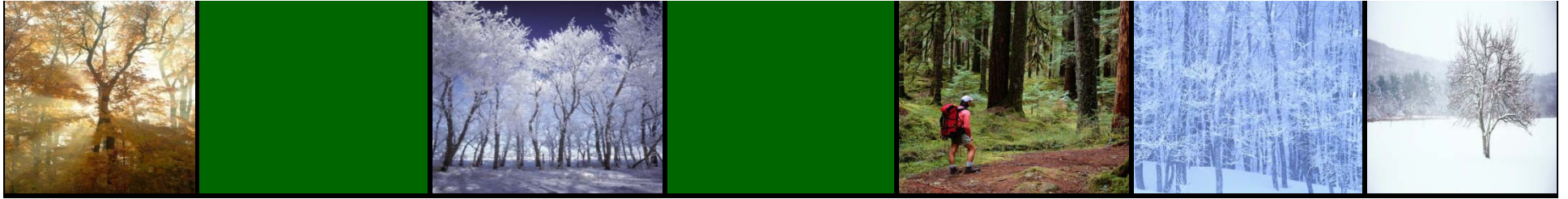


Green space benefits to society include:

- Social benefits - outdoor recreation opportunities, health and wellness impacts, and active transportation links;
- Green infrastructure benefits - storm water management



Green space to a significant degree helps to define the character of a community or city



Green Space Background

- ✿ The Parks, Open Space and Leisure Background Report and Master Plan, and the new City of Greater Sudbury Official Plan examined a number of green space issues and made recommendations going forward;
- ✿ Due to time and budget constraints these plans were not able to develop a number of green space issues further

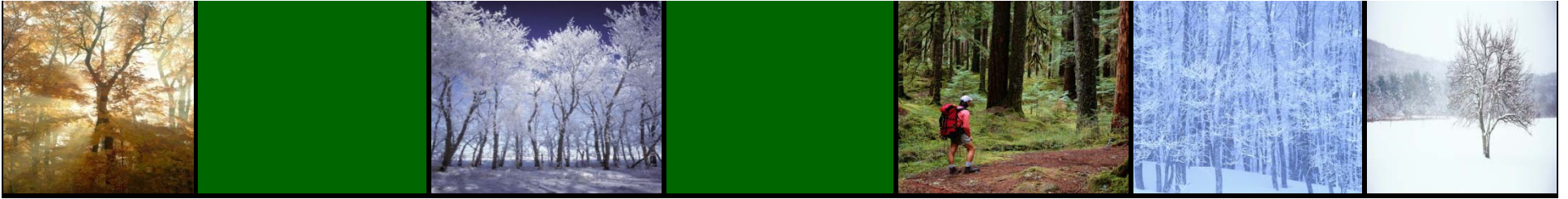




Green Space Background

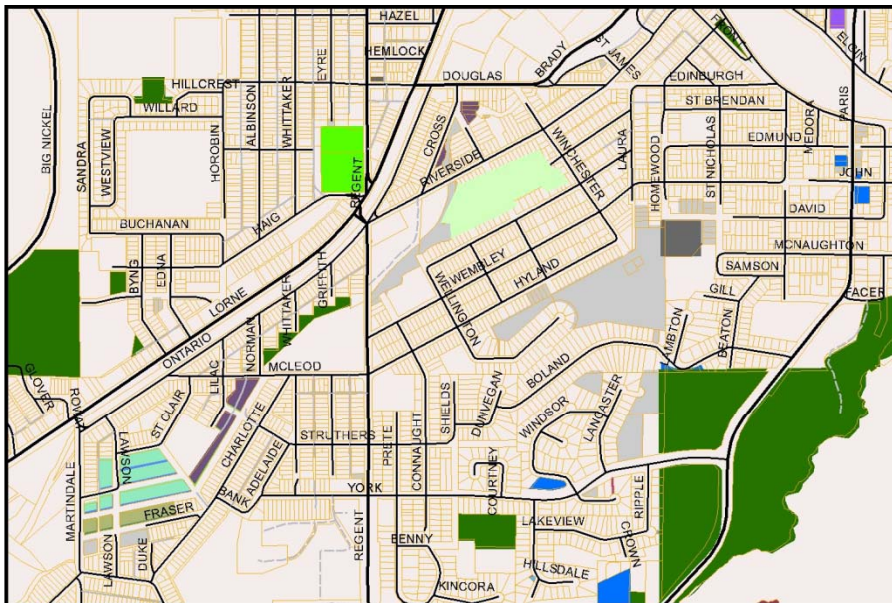
- ✿ These plans did not identify new green space which should be added to the City's current park and open space public land inventory;
- ✿ Criteria for prioritizing future green space acquisitions, dispositions and land exchanges were also not fully developed

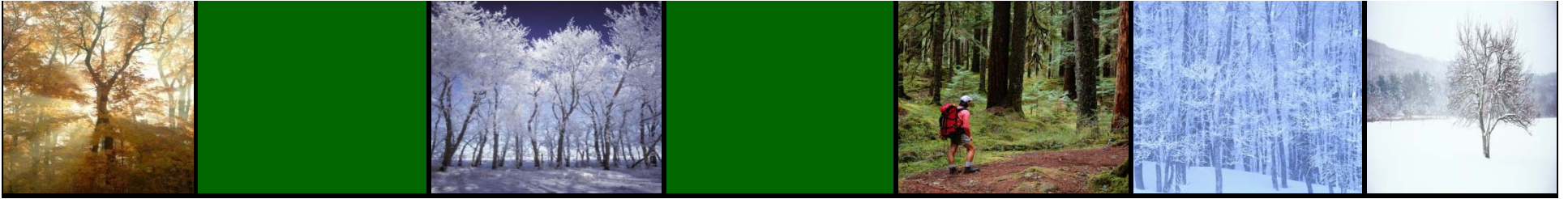




Public lands map

- Public lands needed to be mapped and placed within a geographic information system so that they could be readily viewed and considered in context
- Much of the database and mapping required has now been completed with considerable staff effort





Public lands map

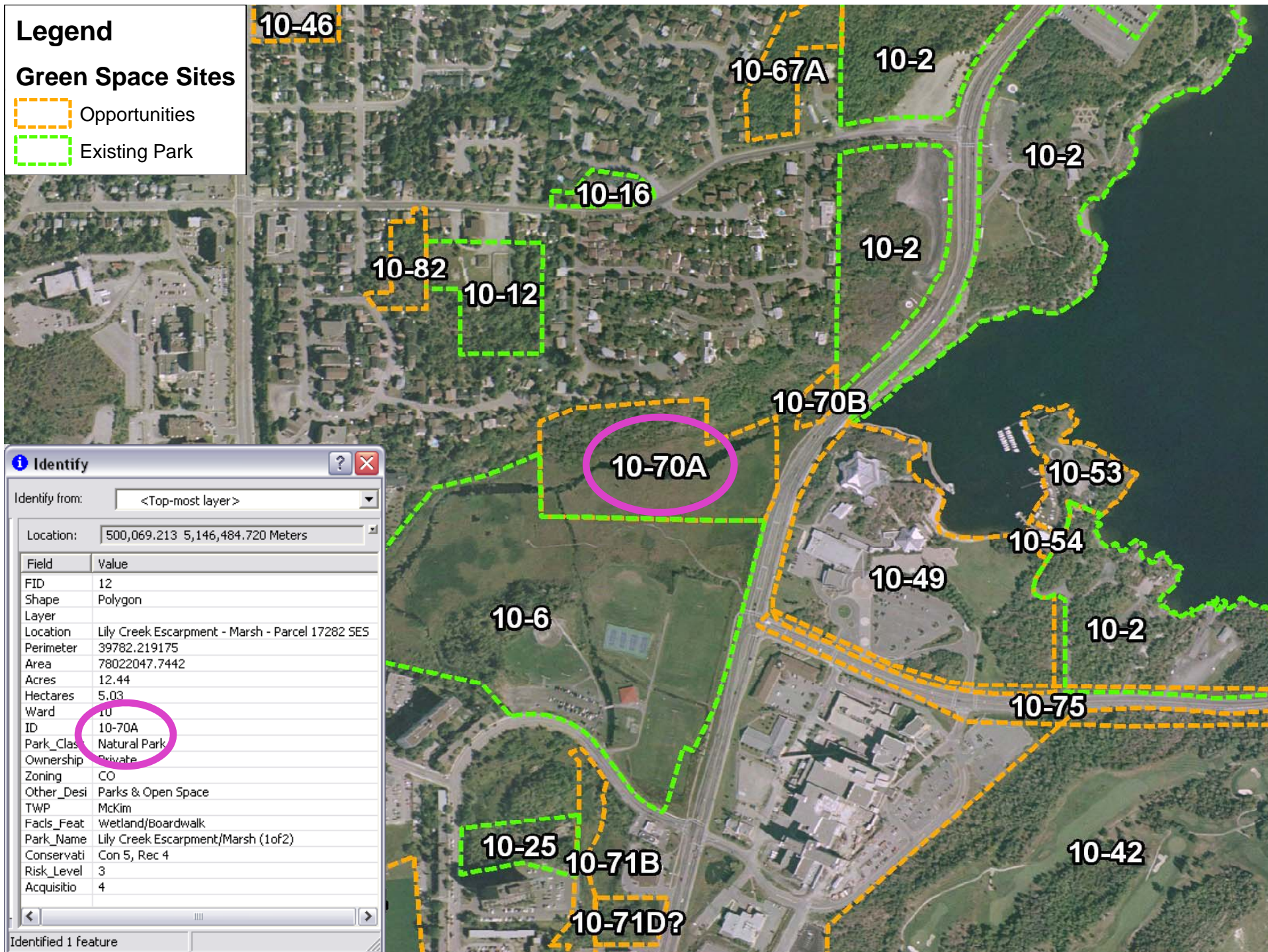
- ✿ The Advisory Panel utilized this database and mapping in its parkland classification work and green space acquisition component
- ✿ GIS allows for a better understanding of green space linkages as well as better understanding of what lands are surplus to City needs

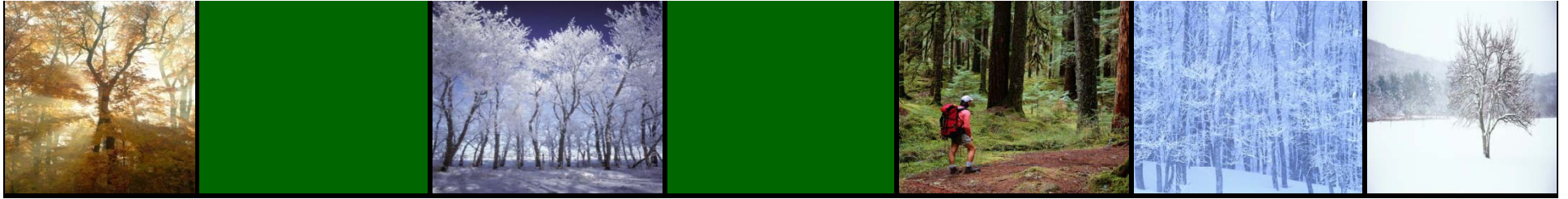


Legend

Green Space Sites

-  Opportunities
-  Existing Park





Official Plan Direction

- Program #2 - “A park classification system to address the range of Parks and Open Space types and characteristics will be established to guide park acquisition, development, and management. The classification system will have regard to natural beauty, environmental functions, and recreation value;

