

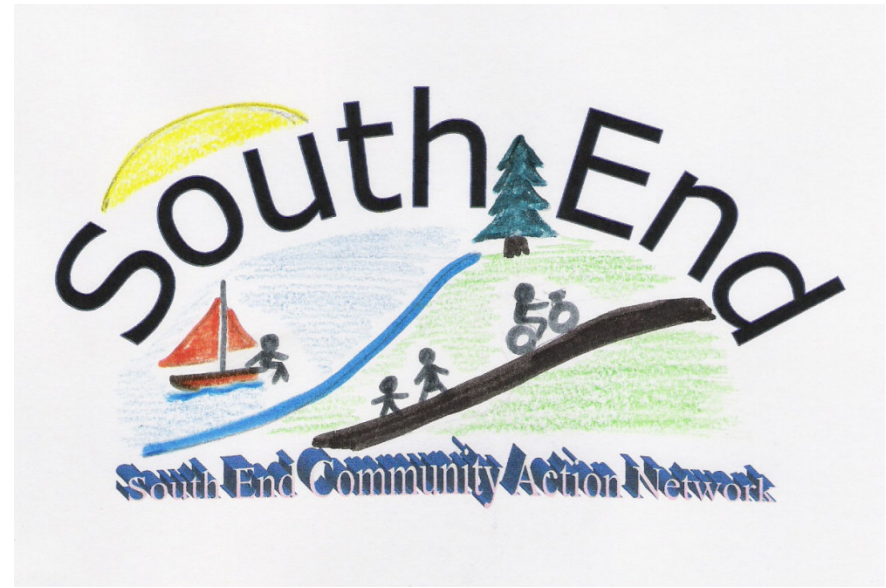
South End CAN

Presentation to Council Nov 18, 2009



Agenda

- Background
- Personnel Involved
- SE CAN Boundaries
- Main Themes
- Key Initiatives
- Thanks



Background



What is a Community Action Network (CAN): The City of Greater Sudbury has been organizing the creation of Community Action Networks for several years as a means to enable citizens to participate, appreciate and fully understand the services offered by community organizations and groups, to help identify community needs.

- A CAN is meant to be community driven and lead, non-profit, open and transparent.
 - must strive to represent the broad interests of the community represented
 - encourage active participation of all residents
 - meetings must be open to the public
- The CAN will seek community input and participation for projects and initiatives.

Background



- **November 15, 2007:** Initial Public Meeting held to talk about a South End CAN in LoEllen HS Library sponsored by Councillors Craig and Caldarelli.
- **January 17, 2008:** A “Strategic Visioning Session” was held at the Royal Canadian Legion where those in attendance (about 75) identified strengths and weaknesses, threats and opportunities associated with the SE CAN area.
- **March 27, 2008:** First Meeting of SE CAN Steering Committee
- **April 17, 2008:** Formation of SE CAN Executive
- **May 15, 2008:** First SE CAN Meeting

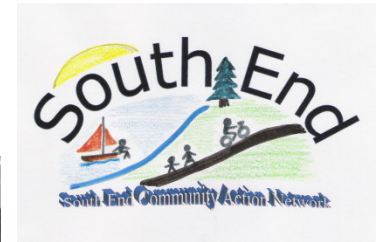
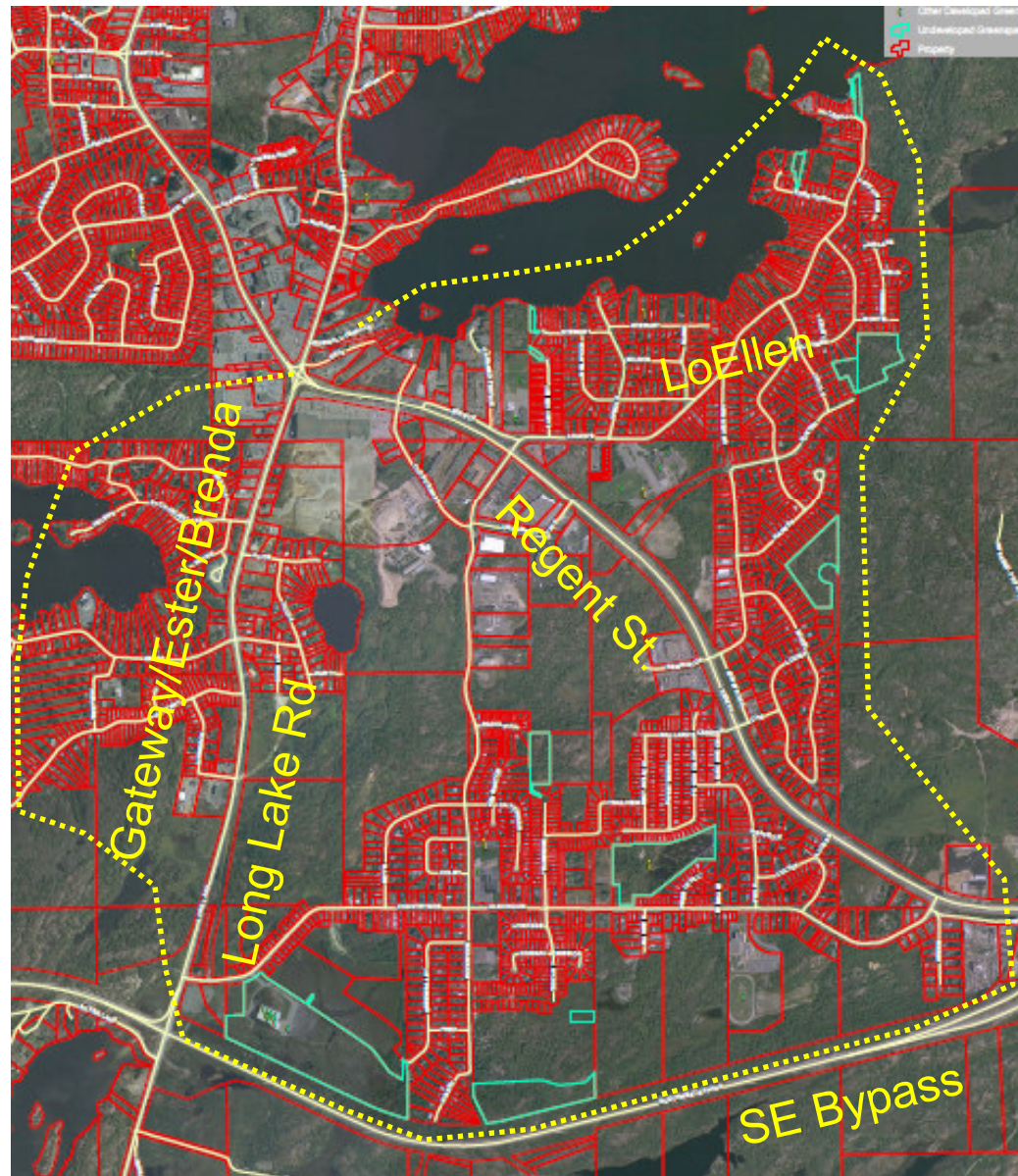
Personnel Involved



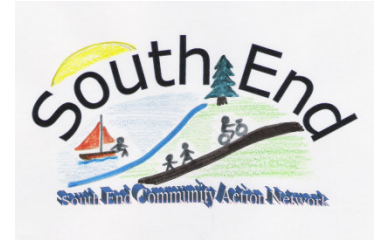
SE CAN Committee:

- **Chair:** *Eva Carissimi (Lo-Ellen)*
- **Vice-Chair:** *Jim Bruni (Mallards Landing)*
- **Treasurer:** *Mark Peplinskie (Mallards Landing)*
- **Secretary:** *Simon Nickson (Mallards Landing)*
- **Communications:** *Terry Pagan (Lo-Ellen PSS)*
- **Community Representatives:**
 - Ester Road Area: *Bob Hay*
 - Countryside/Algonquin: *Lisa Langle*
 - Algonquin to Regent: *Vacant*
 - Lo Ellen: *Raymond Jacques*
 - Mallards / Vintage Green: *Kelly Reilly*
 - Cavendish: *Vacant*
 - Brenda/St. Charles Road: *Vacant*
 - Louisa Area: *Vacant*
- Sherri Moroso
Community Dev Coordinator
- Councillor Frances Caldarelli
- Councillor Doug Craig
- Greater Sudbury Police

SE CAN AREA



Main Themes



- The January 2008 Strategic Visioning Session helped to guide the future direction and help prioritize the focus of the CAN.
- The SE CAN Executive used the “visioning session” results to define 8 Main Themes that are guided by a particular person.

Main Themes



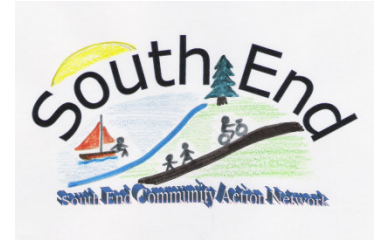
- Safety/By-Law Issues (***Mark Peplinskie***)
- Community Partnership Opportunities (***Jim Bruni***)
- Environment (***Eva Carissimi***)
- Green Space Issues (***Raymond Jacques***)
- Traffic Related Issues (***Simon Nickson***)
- Communications (***Terry Pagan***)
- Recreation Facilities (***Raymond Jacques***)
- Small Business Support (***Vacant***)

Key Initiatives



- Safety/By-Law Issues (**Mark Peplinskie**)
 - COPS Program, Vandalism, New Countryside Sidewalk
- Community Partnership Opportunities (**Jim Bruni**)
 - Algonquin Playground, Lo Ellen Tennis Courts
- Environment (**Eva Carissimi**)
 - Clean up Blitz, Clean Air Sudbury, Adopt a Road
- Green Space Issues (**Raymond Jacques**)
 - Vintage Green Playground
 - North Trailridge Green Space
 - Trailridge Rd. to Mallards Landing Drive Trail
 - Algonquin Rd. to Mallards Landing Park Trail

Key Initiatives



- Traffic Related Issues (***Simon Nickson***)
 - Speed Survey (Countryside @ Blythe and Gateway at Eric)
 - Greater Sudbury Police Service Representation
 - Mallards Landing Drive/Regent St. Traffic Lights
 - Algonquin Road Designated Crosswalk
- Communications (***Terry Pagan***)
 - SE CAN Website Established
 - Newsletter September 2009
- Recreation Facilities (***Raymond Jacques***)
 - Countryside Ice Pad/Soccer Fields
- Small Business Support (***Vacant***)
 - To be explored further – New Walmart and other SE Businesses

Key Initiatives



Countryside Sidewalk



South End Green Spaces



May 09 Clean Up Blitz



Mallards Landing/Cam Traffic Light Petition



South End Community Action Network

Green Space Initiatives



Trail Extension
&
Upgrade
Proposal
from
Pond Hollow
to
Algonquin Rd.

South End Community Action
Network

Green Space Initiatives



Green Space Initiatives

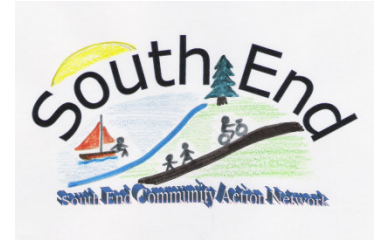


Oriole Park Paved Area 2010 Budget Submission



South End Community Action
Network

Thanks



- Community Dev Coordinators:
 - Sherri Moroso (Current)
 - Ginette Forget-Rose (Previous)
- Councillor Frances Caldarelli
- Councillor Doug Craig
- South End Citizens and Volunteers
- SE CAN Executive
- Greater Sudbury Police
- Chris Gore