

For Information Only

2018 Report Card on Homelessness

Presented To: Community Services
Committee

Presented: Monday, Jul 08, 2019

Report Date Tuesday, Jun 11, 2019

Type: Correspondence for
Information Only

Resolution

For Information Only

Relationship to the Strategic Plan / Health Impact Assessment

This report supports Council's Strategic Plan in the area of Quality of Life and Place as it aligns with the Population Health Priorities of Indigenous Youth, Mental Health, Housing and Healthy Streets by continuing to inform the community about the system that is in place to address homelessness.

Report Summary

This report provides information about the 2018 Report Card on Homelessness. The completion of an annual Report Card on Homelessness is one way to monitor, measure, and evaluate the system that is in place to address homelessness. Annual reporting helps inform and engage the local community and enhance transparency and accountability.

Financial Implications

There are no financial implications associated with this report.

Signed By

Report Prepared By

Gail Spencer
Coordinator of Shelters and
Homelessness
Digitally Signed Jun 11, 19

Health Impact Review

Gail Spencer
Coordinator of Shelters and
Homelessness
Digitally Signed Jun 11, 19

Manager Review

Tyler Campbell
Director of Social Services
Digitally Signed Jun 11, 19

Division Review

Tyler Campbell
Director of Social Services
Digitally Signed Jun 11, 19

Financial Implications

Jim Lister
Manager of Financial Planning and
Budgeting
Digitally Signed Jun 11, 19

Recommended by the Department

Ian Wood
Interim General Manager of Community
Development
Digitally Signed Jun 11, 19

Recommended by the C.A.O.

Ed Archer
Chief Administrative Officer
Digitally Signed Jun 19, 19

Background

The Community Advisory Board on Homelessness Initiatives has completed the 2018 Report Card on Homelessness (Report Card), Appendix A – 2018 Report Card on Homelessness. A Report Card on Homelessness for the City of Greater Sudbury has been developed and released to the community annually since 2008.

As this was the tenth annual Report Card, a “ten year challenge” compared key data points from 2008 to 2018. While the number of people accessing an emergency shelter has stayed relatively static in the past ten years, the number of children using a shelter has decreased by 34%. The average market rent for a one-bedroom apartment in Greater Sudbury has increased by 30% while the maximum shelter allowance provided to Ontario Works recipients has only increased by 10%.

This year's Report Card highlights some of the objectives and priorities outlined in the City of Greater Sudbury's Ten Year Housing and Homelessness Plan.

<https://agendasonline.greatersudbury.ca/index.cfm?pg=feed&action=file&agenda=report&itemid=3&id=674>

The Report Card identifies the programs and services that:

- Strengthen approaches to addressing homelessness;
- Ensure emergency accommodation is available when needed, but focus on transitioning to permanent housing;
- Address the need of the most vulnerable populations of homeless.

It also identifies some future resources that will help address the continued need:

- To improve housing access and affordability for low income households; and
- For additional supportive services coupled with permanent housing.

One further priority identified in the Plan was “a need to monitor and report on progress towards meeting the Housing and Homelessness Plan objectives and targets”. The completion of an annual Report Card on Homelessness is one way to monitor, measure, and evaluate the system we have in place to address homelessness. Annual reporting helps inform and engage the local community and enhance local transparency and accountability.

The Report Card on Homelessness is intended to provide information to all sectors of the community from business, education, health, government, social services, faith community, and members of the general public. It will be made available on the City of Greater Sudbury's website and to the citizens of the City of Greater Sudbury through the Citizen Service Centres, Social Services Agencies, post secondary schools, and members of the Community Advisory Committee on Homelessness.

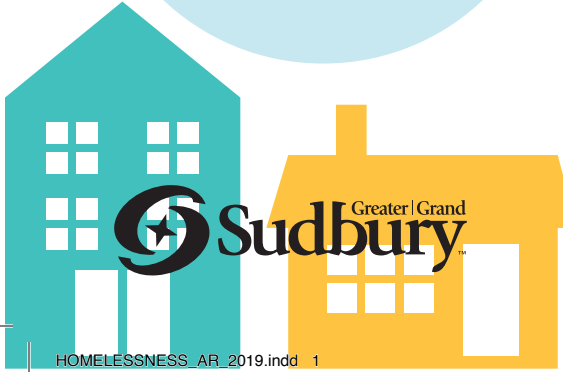
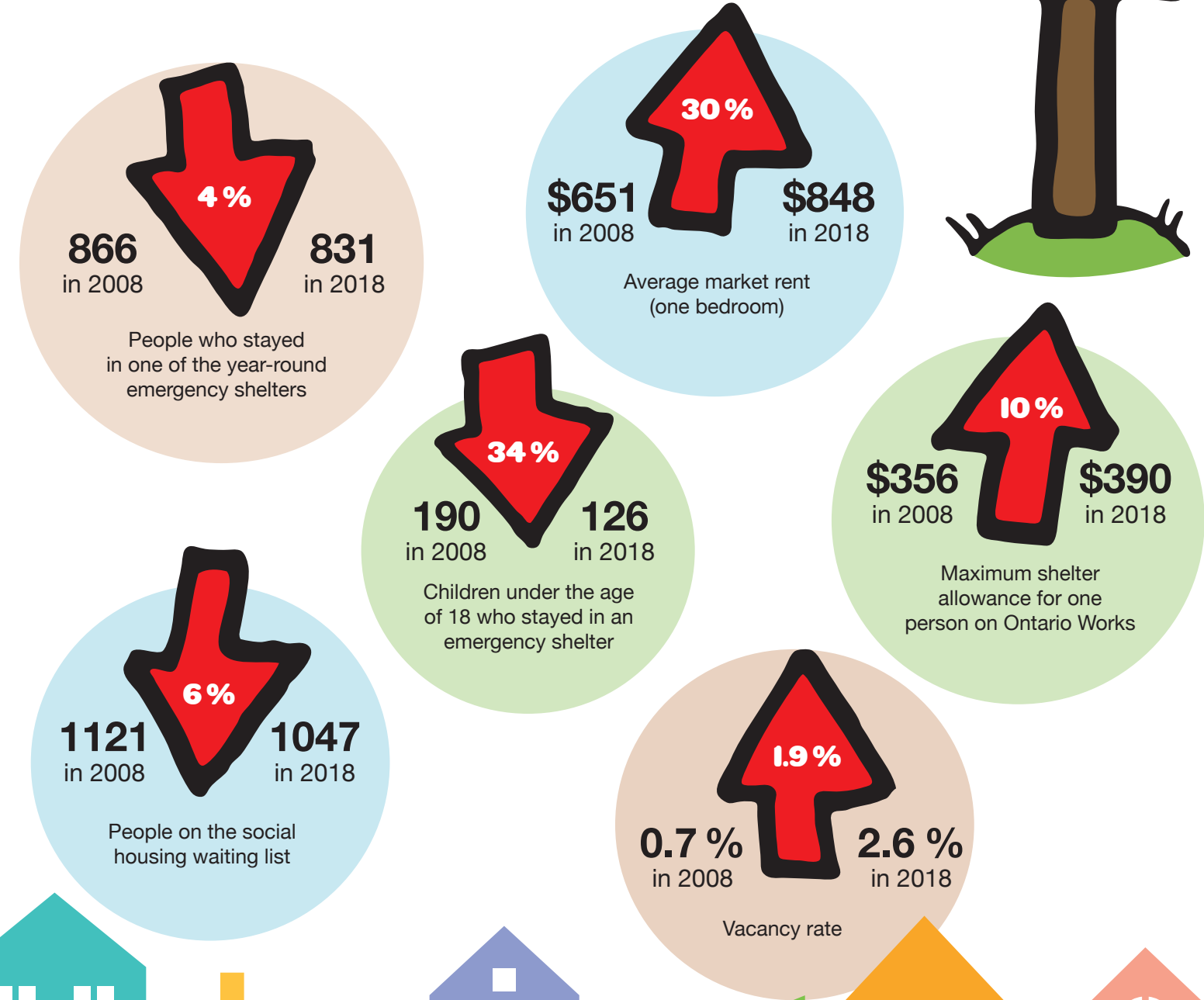
Next Steps

The 2018 Report Card on Homelessness will be released widely within the community. Data and information from community homelessness programs will continue to be monitored and evaluated to improve system impact.

Report Card on Homelessness for 2018

The first Report Card on Homelessness was developed for 2008.

What has changed in homelessness from 2008 to 2018?



Priorities from the Ten Year Housing and Homelessness Plan:

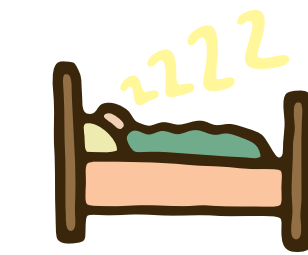
Strengthen approaches to preventing homelessness



1,599 households

were supported through the Community Homelessness Prevention Initiative (CHPI) fund with rental arrears, utility arrears, last month's rent deposits and utility deposits

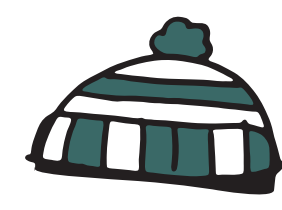
Ensure emergency accommodation is available when needed, but focus on transitioning to permanent housing



831

people used one of the year-round emergency shelter programs in 2018

<http://tsasudbury.ca/>
<http://tsasudbury.ca/cedar-place/>
<http://www.jeunesdelarue.ca/>



126

of 831 were children under the age of 18



261 + 94

women children
 escaping domestic violence were provided shelter at YWCA Geneva House
<https://ywcasudbury.ca/programs/genevra-house-shelter/>

Address the needs of the most vulnerable populations of homeless

Off The Street low barrier emergency shelter program

426

people stayed here from November 2017 to April 2018
<https://sm.cmha.ca/>



Outreach services are better connected to shelters and housing programs:

51

people on average were contacted each night
<http://www.jeunesdelarue.ca/>



APPENDIX A - 2018 REPORT CARD ON HOMELESSNESS

There is a need to improve housing access and affordability for low income households



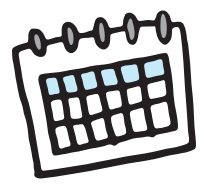
3,832

households received subsidized accommodations through City of Greater Sudbury Housing Services



1,047

applicants on the rent-gear-to-income wait list as of December 31, 2018



5 year

wait time for a one bedroom subsidized unit in Greater Sudbury

There is a need for additional supportive services coupled with permanent housing (both supportive housing and supports in private homes)

69

people who had experienced chronic homelessness were supported to stay housed through the Housing First Program
<https://homelessnessnetwork.ca/>

195

people were supported to stay housed by Monarch Recovery Services through supportive/aftercare programs
<http://monarchrecovery.com/>

240

people were supported to stay housed by the Canadian Mental Health Association through supportive or transitional housing, rent supplements and transitional community support
<https://sm.cmha.ca/>

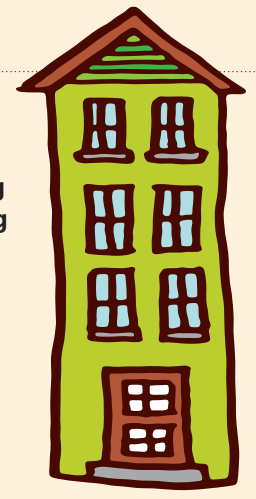
Coming Soon...

Complete renovation of 200 Larch Street which will include:

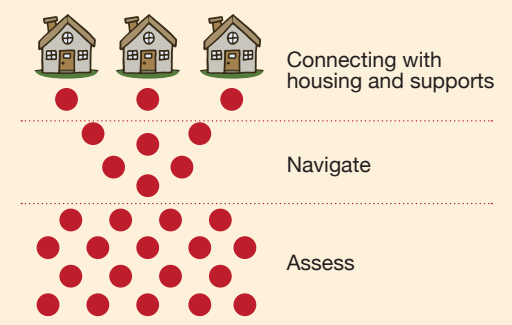
- 15 bed residential Harm Reduction home
- Permanent location for low barrier Off the Street shelter
- Nurse Practitioner Clinic



New construction of a 38-unit affordable housing apartment building through Provincial Home For Good funding



Development of a Co-ordinated Access System:



New five-year homelessness funding under the Federal Reaching Home Program

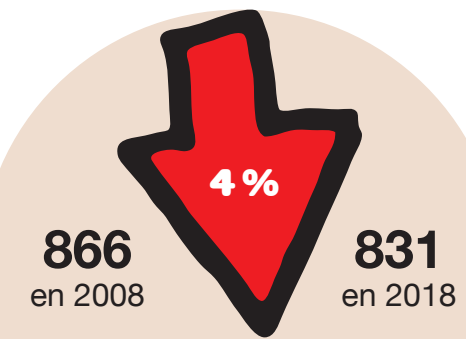
Fiche de rendement sur l'itinérance

en 2018

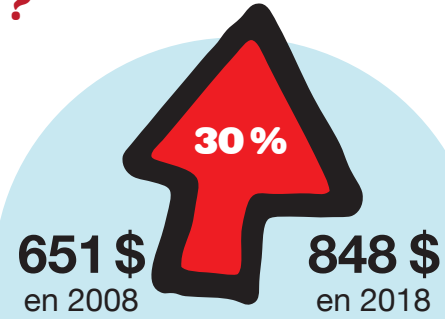
La première Fiche de rendement sur l'itinérance a été développée en 2008.

Quels aspects de l'itinérance ont changé entre 2008 et 2018?

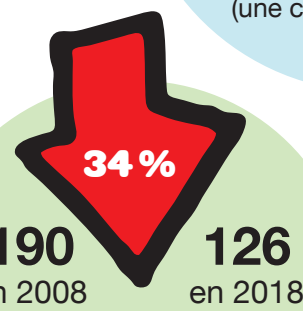
Objectifs décennaux



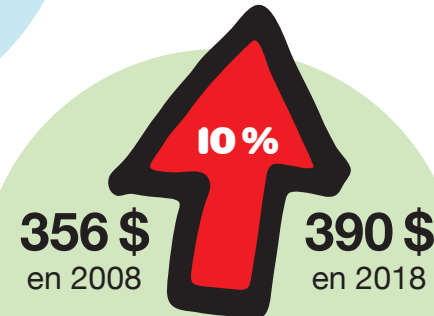
Nombre de personnes qui ont utilisé un des abris d'urgence accessibles à longueur d'année



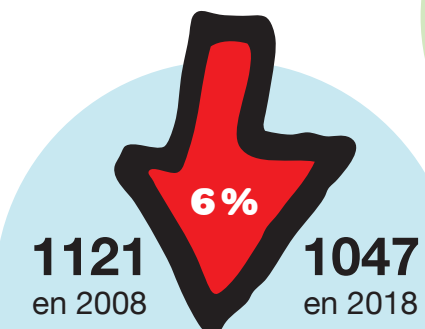
Prix moyen d'un loyer selon le marché (une chambre à coucher)



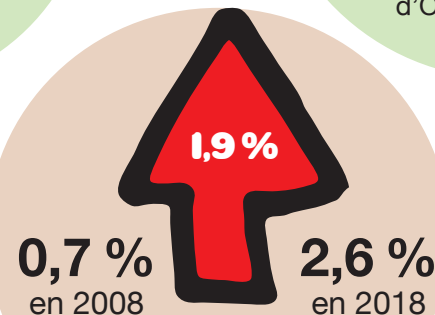
Nombre de personnes de moins de 18 ans qui ont utilisé un abri d'urgence



Allocation de logement maximale pour une personne bénéficiaire d'Ontario au travail



Nombre de personnes inscrites à la liste d'attente pour le logement social



Taux d'inoccupation

Priorités du Plan décennal de logement et de lutte contre l'itinérance :

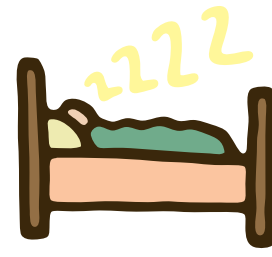
Renforcer les approches de la lutte contre l'itinérance



1 599 ménages

ont reçu du soutien du fonds de l'Initiative de prévention de l'itinérance dans les collectivités (IPIC) pour les arriérés de loyer et de services publics, les acomptes pour le dernier mois de loyer et les acomptes pour les services publics

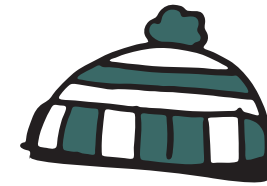
Assurer la disponibilité des abris d'urgence au besoin, mais viser la transition vers un logement permanent



831

personnes ont utilisé un des programmes d'abri d'urgence accessibles à longueur d'année en 2018

<http://tsasudbury.ca/>
<http://tsasudbury.ca/cedar-place/>
<http://www.jeunesdelarue.ca/>



126

de ces personnes étaient des enfants de moins de 18 ans



261 + 94

femmes enfants

qui fuyaient la violence familiale ont été hébergés à la Maison Geneva du YMCA
<https://ywcasudbury.ca/programs/genevra-house-shelter/>

Répondre aux besoins des populations itinérantes les plus vulnérables

Le programme d'abri d'urgence hors rue à exigences minimales

426

personnes y ont habité entre novembre 2017 et avril 2018
<https://sm.cmha.ca/>



Les services de proximité ont des relations plus étroites avec les abris d'urgence et les programmes de logement :

51

personnes par nuit en moyenne ont été approchées
<http://www.jeunesdelarue.ca/>



APPENDIX A - 2018 REPORT CARD ON HOMELESSNESS

Il faudrait rendre le logement plus accessible et abordable pour les ménages à faible revenu



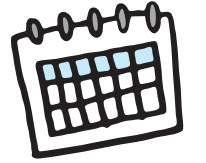
3 832

ménages ont obtenu un logement subventionné par l'entremise des Services de logement de la Ville du Grand Sudbury



1 047

demandes étaient inscrites à la liste d'attente pour le logement à loyer indexé sur le revenu le 31 décembre 2018



5 ans d'attente

pour un logement subventionné à une chambre à coucher dans le Grand Sudbury

Il faudrait d'autres services de soutien liés au logement permanent

(logements avec services de soutien et services de soutien dans les domiciles privés)

69

personnes qui ont connu l'itinérance chronique ont reçu du soutien leur permettant de conserver un logement grâce au programme Logement d'abord
<https://homelessnessnetwork.ca/>

195

personnes ont reçu du soutien leur permettant de conserver un logement grâce aux services de suivi
<http://monarchrecoveryservices.ca/>

240

personnes ont reçu du soutien de l'Association canadienne pour la santé mentale : logement avec services de soutien; supplément de loyer; transition ou soutien à la transition
<https://sm.cmha.ca/>

À l'horizon...

Après la rénovation complète de l'immeuble du 200, rue Larch, il y aura :

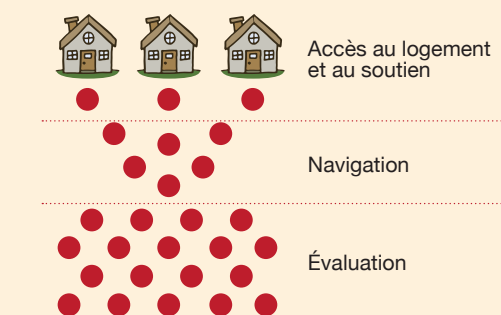
- une maison de réduction des méfaits à 15 lits
- un lieu permanent pour l'abri hors rue à exigences minimales
- une clinique dirigée par du personnel infirmier praticien



Construction d'un nouvel immeuble de 38 appartements à loyer abordable financé par le programme provincial Logements pour de bon



Développement d'un système d'accès coordonné :



Nouveau fonds sur cinq ans du programme fédéral « Vers un chez-soi » pour la lutte contre l'itinérance

