

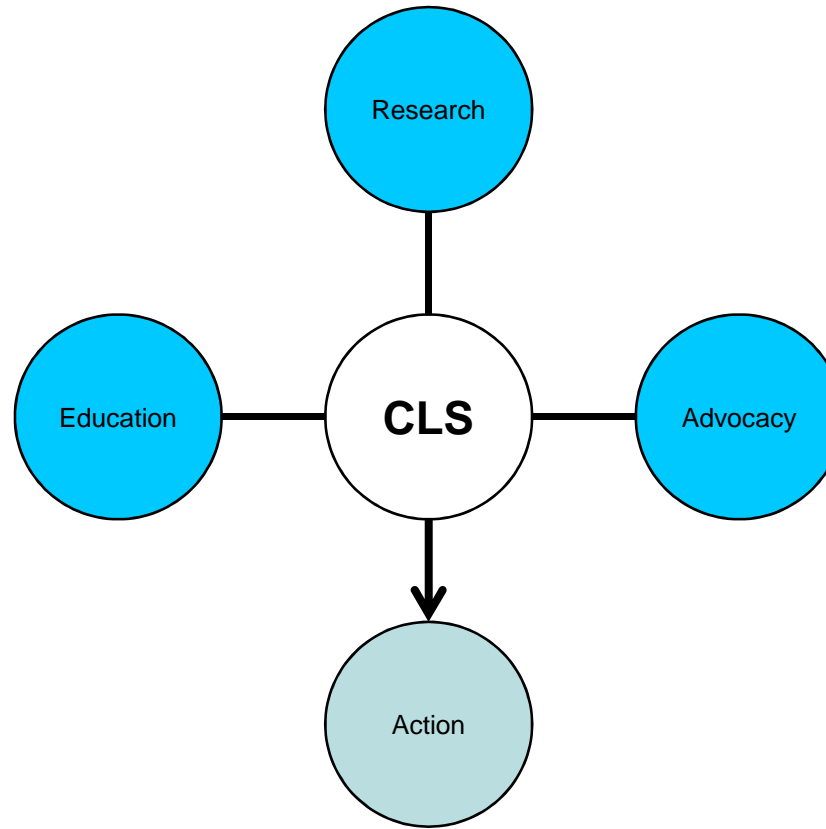
Coalition for a Liveable Sudbury

May 20, 2009

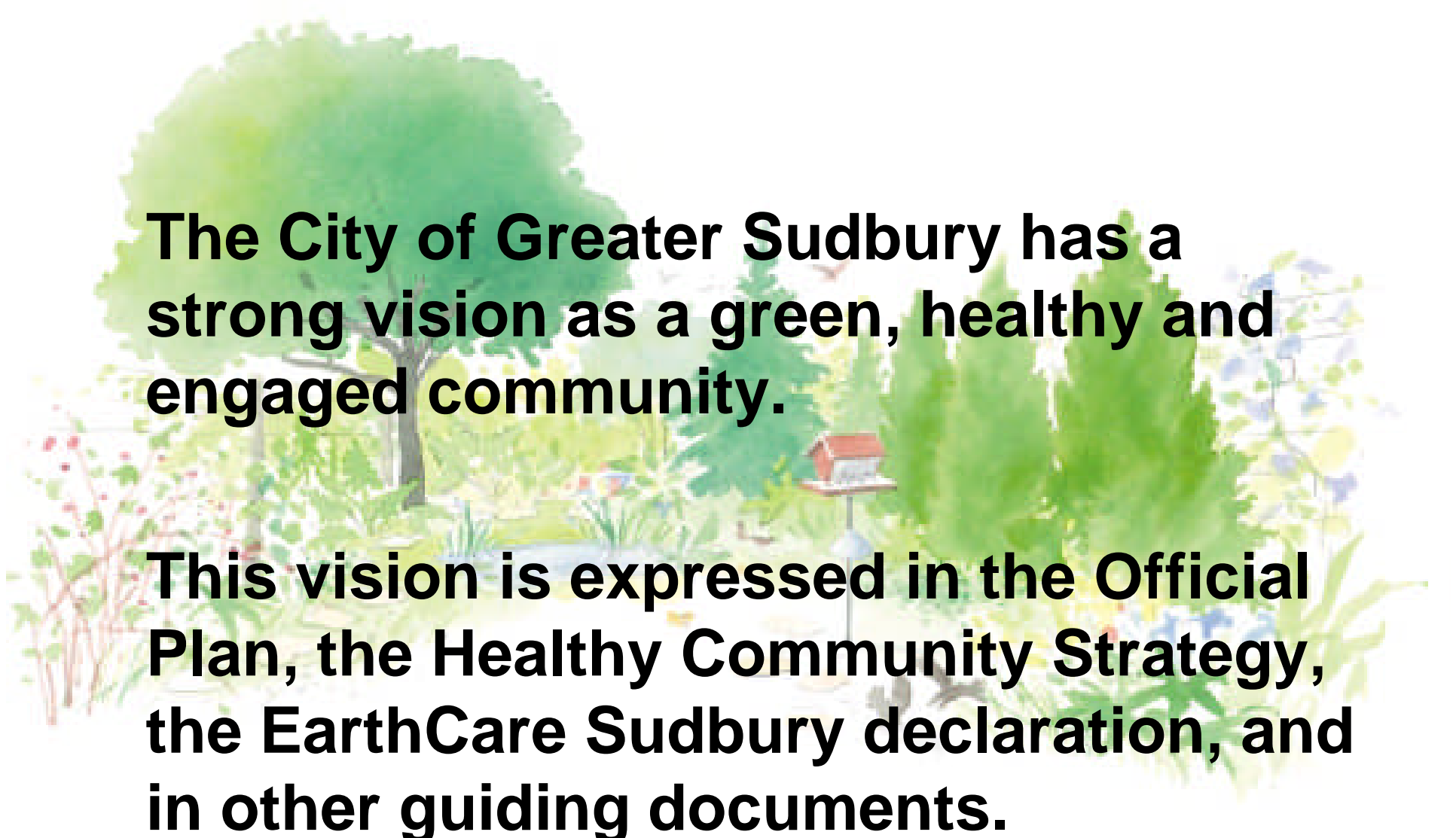
**Presentation to City of Greater
Sudbury Priorities Committee**

The Coalition for a Liveable Sudbury is a grassroots network of citizen groups and individuals who share a vision of Sudbury as a green, healthy and engaged community.

Bethel Lake Neighbourhood Association
Citizens for the Preservation of Nepahwin/Lily Creek Wetlands
[Copper Cliff Community Action Network](#)
[Eat Local Sudbury](#)
[The Foodshed Project](#)
Friends of Bennett Lake
Friends of Lake Nepahwin
[Friends of the Roxborough Greenbelt](#)
[Greater Sudbury Environmental Network](#)
[Green Sudbury](#)
[Junction Creek Stewardship Committee](#)
Laurentian University Sustainable Earth Club
Laurentian University's Let's Talk Science Partnership Program
Lo-Ellen Park Residents Association
Lo-Ellen Park Secondary School Environmental Club
[Minnow Lake Restoration Group](#)
[Minnow Lake Community Action Network](#)
[Myths and Mirrors](#)
New Sudbury Community Action Network
Northern Plant Savers
Pesticide Free Sudbury
[Sudbury Animal Advocates](#)
[Sudbury Food Connections Network](#)
[Valley East Community Action Network](#)
Walden CAN Environmental Committee



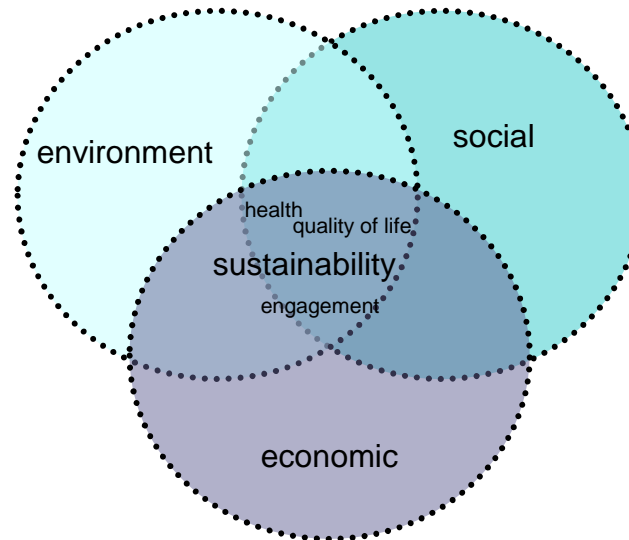
Working towards environmental, social and economic sustainability in the City of Greater Sudbury, through a Smart Growth model.



The City of Greater Sudbury has a strong vision as a green, healthy and engaged community.

This vision is expressed in the Official Plan, the Healthy Community Strategy, the EarthCare Sudbury declaration, and in other guiding documents.

The interconnected goals of environmental, social, and economic sustainability are intrinsic to Sudbury's vision.



Adapted from the Greater Sudbury Healthy Community Strategy, pg. 6

Sustainability: meeting “the needs of the present without compromising the ability of future generations to meet their own needs.” (Brundtland Commission, 1989)



Protects green space, farmland,
and ecologically sensitive areas



Increases green infrastructure
and stormwater management

Smart Growth

Engages citizens in their community



Creates vibrant, complete, walkable communities; affordable
housing and provides a range of transportation options



Smart Growth revitalizes exiting neighbourhoods



Existing conditions



Street trees added



Buildings added at sidewalk edge



Convenient public transit added

Pembina Institute, 2007

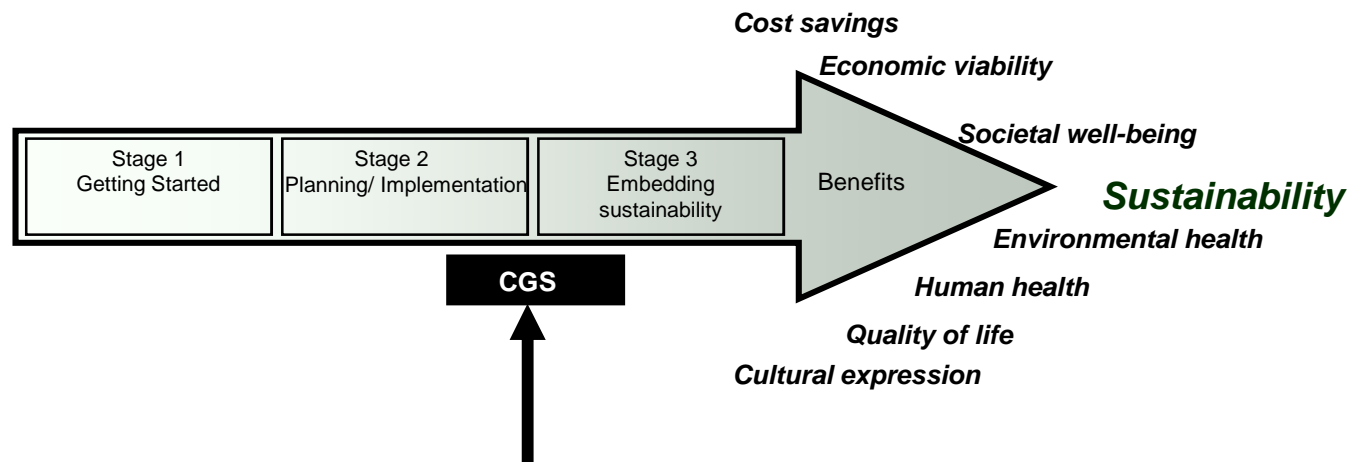
Community Sustainability Index Rank

- 1 Toronto
- 2 Ottawa
- 3 Halton Regional Municipality
- 4 Stratford
- 5 Guelph
- 6 Peel Regional Municipality
- 7 York Regional Municipality
- 8 Waterloo Regional Municipality
- 9 London
- 10 Barrie
- 11 Durham Regional Municipality
- 12 Kingston
- 13 Cornwall
- 14 Sarnia
- 15 Peterborough
- 16 Hamilton
- 17 Windsor
- 18 Niagara Regional Municipality
- 19 Woodstock
- 20 Orillia
- 21 North Bay
- 22 St. Thomas
- 23 Belleville
- 24 Brantford
- 25 Thunder Bay
- 26 Sault Ste. Marie
- 27 Greater Sudbury

Smart Growth Index Rank

- 1 Toronto
- 2 Stratford
- 3 Cornwall
- 4 London
- 5 Ottawa
- 6 Barrie
- 7 Guelph
- 8 St. Thomas
- 9 Peterborough
- 10 Woodstock
- 11 Windsor
- 12 Orillia
- 13 Belleville
- 14 North Bay
- 15 Peel
- 16 Kingston
- 17 Hamilton
- 18 Sault Ste. Marie
- 19 Waterloo
- 20 Brantford
- 21 Thunder Bay
- 22 York
- 23 Sarnia
- 24 Halton
- 25 Greater Sudbury
- 26 Durham
- 27 Niagara

We've come a long way – we need to go even farther!



We are here. How do we build on what's been done to best move forward to achieve more benefits of sustainability?

Two tools to make it happen:

- **Using land-use planning tools that best support sustainability**
- **An Integrated Community Sustainability Plan**

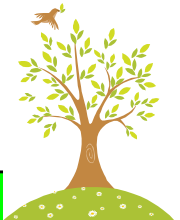
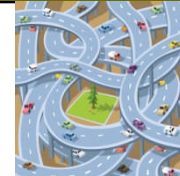
Tool # 1:

Assessing and implementing land-use planning tools that best support sustainability and Smart Growth.

Why land use planning tools?

Land use planning guides how our City grows and changes. It sets a framework that can support or discourage sustainability at an individual and a community level.

This underlying influence is recognized in EarthCare Sudbury's Local Action Plan updated Land Use Planning objective to: *"use municipal policy tools to further the implementation of EarthCare Sudbury objectives and principles."*

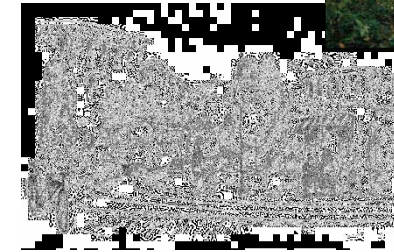
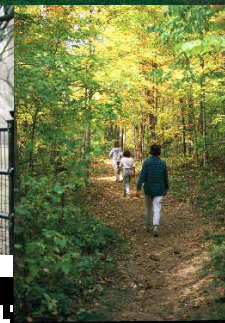
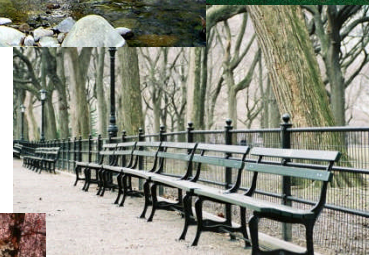
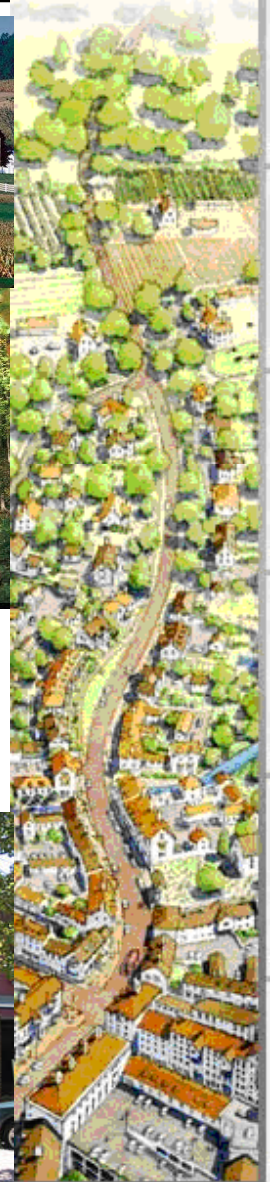
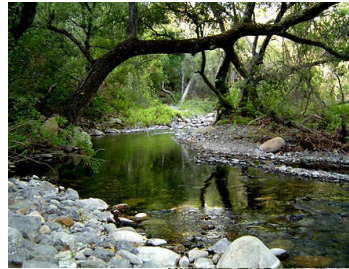


Land use planning sets the road map

*Where do we want to go
as a community?*



Environmental Law and Policy Center



Land use planning sets the road map

How do we want to spend our days?



***Making sustainability
'business as usual'***

- 1) What land-use planning tools can best support Smart Growth in the CGS?**
- 2) What other tools could best support Smart Growth in the CGS?**

***Engaging citizens,
reducing conflict,
improving outcomes.***

**3) How can meaningful
citizen engagement best
be achieved in land use
planning?**

***Moving forward,
Reaping the benefits***

- 4) How can the vision statements expressed in the Official Plan and the Healthy Community Strategy be most present in the decisions of City staff and City Council?**
- 5) What is the most effective way to monitor progress?**

Getting the work done

***** research ***consultation *** implementation *****

- through the Healthy Community Cabinet

or

- a Smart Growth Planning Advisory Panel
- Integrated Community Sustainability Plan

Tool # 2:

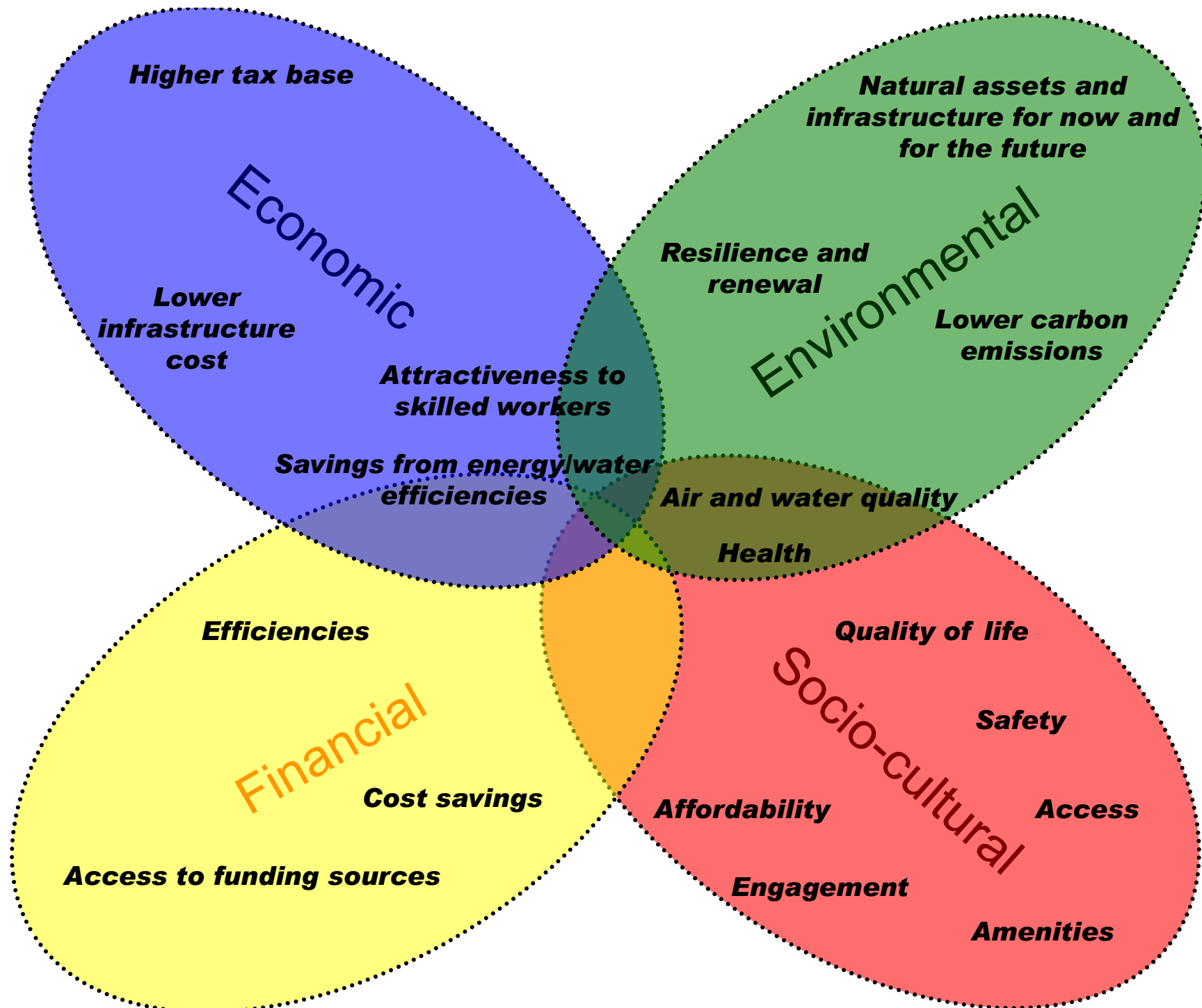
An Integrated Community Sustainability Plan.

social, cultural, environmental, and economic sustainability



A whole that is bigger than the sum of its parts.

The Benefits



Why now?

- **A strong base for success**
- **A big step forward for recognized objectives**
 - **Community engagement**
- **Timely recommendations for the Official Plan review**
- **The right time for sustainability**
 - **Funding opportunities**