

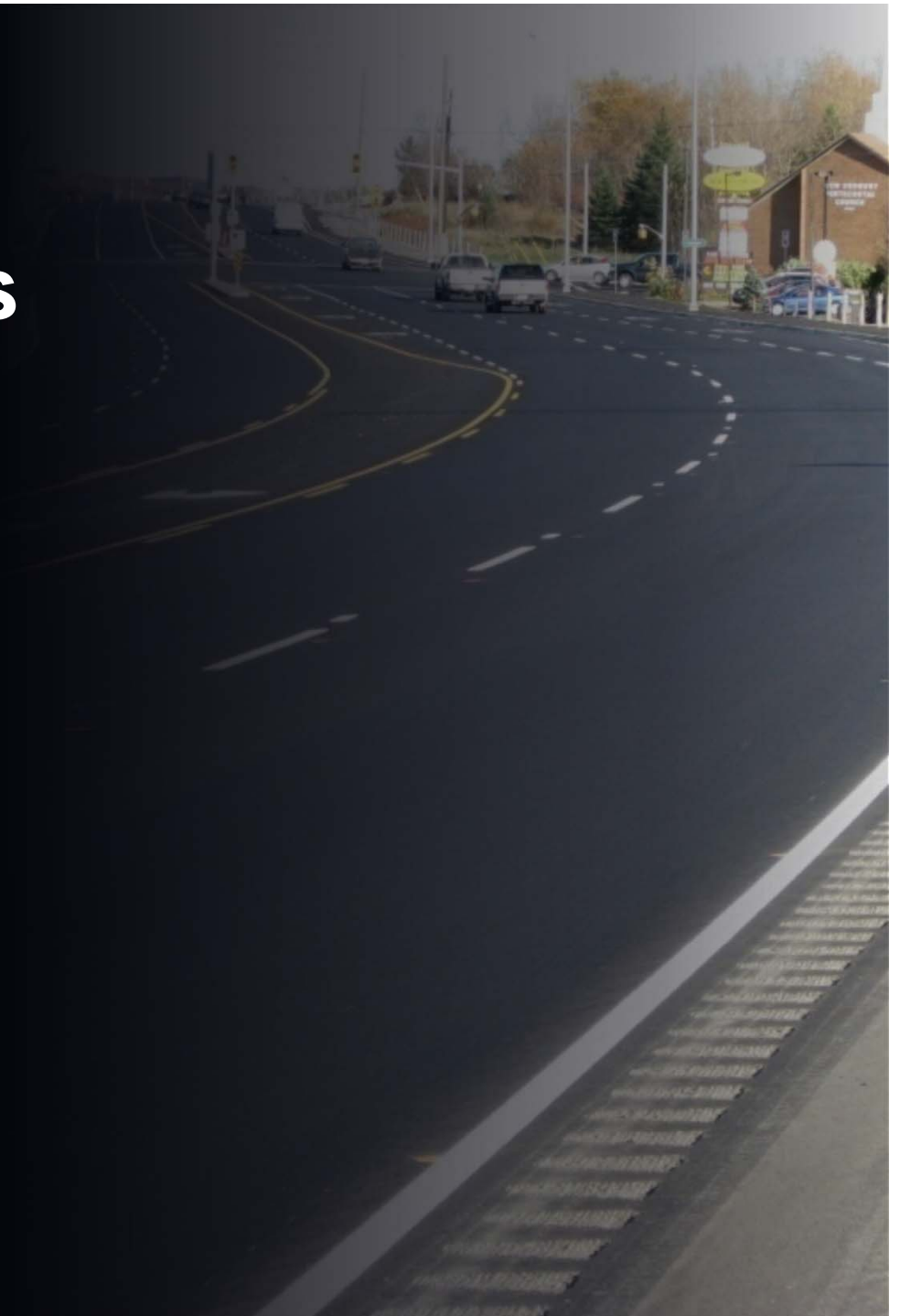
Infrastructure Services **Roads Standards**

Presented by:

**David Shelsted, MBA, P. Eng.,
Roads Engineer**

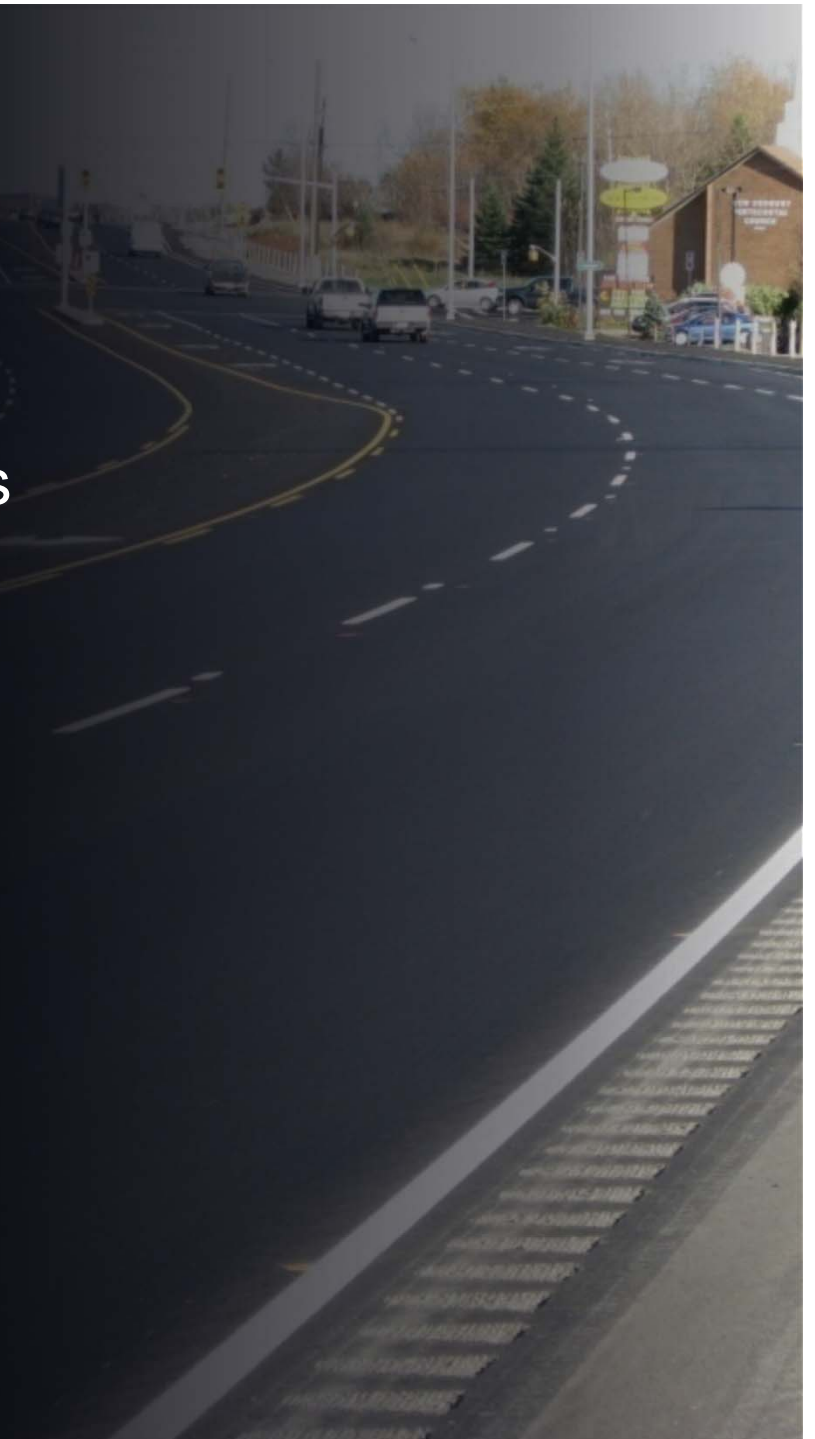
**Robert M. Falcioni, P. Eng.,
Director of Roads and
Transportation.**

November 5, 2008



Background

- Provincial reference manuals:
 1. Geometric Design Standards for Ontario Highways (MTO)
 2. Geometric Design Guide for Canadian Roads (TAC)
- City reference manuals:
 1. Engineering Design Manual
 2. Standard Specifications and Standard Drawings



Grades

- Grade is expressed as a percentage that is rise or fall in metres over a horizontal length of 100 metres
- **Local Roads:**
Greater than 1%, Less than 8%
- **Arterial Roads:**
Greater than 1%, Less than 6%



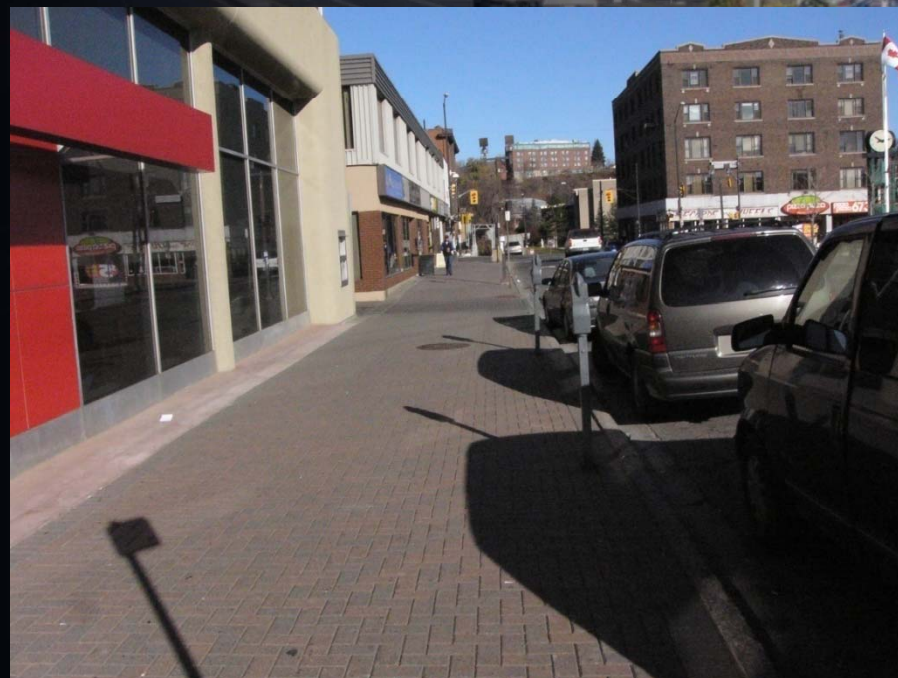
Lane Widths

- 3.75 m Through Lanes
- 4.25 m Curb Lanes (Urban Section)
- 2.0 m Paved Shoulders (Rural Section)



Sidewalks

- 1.5 m Width
- One side Local Roads,
both sides on Collectors
and Arterials



Medians

- Flush Median (MR 35)
- Raised Median (Kingsway and MR 80)
- Divided Highway (MR 55)



Infrastructure Services
Roads Standards

Boulevards

- 1.5 m Width
- Constructed with sod, asphalt or lockstone



Urban Section Construction

- Upgrades from a Rural Section to an Urban Section
- Available budget and storm outlet considered
- Construction without curbs also considered



Infrastructure Services
Roads Standards

Questions?

