

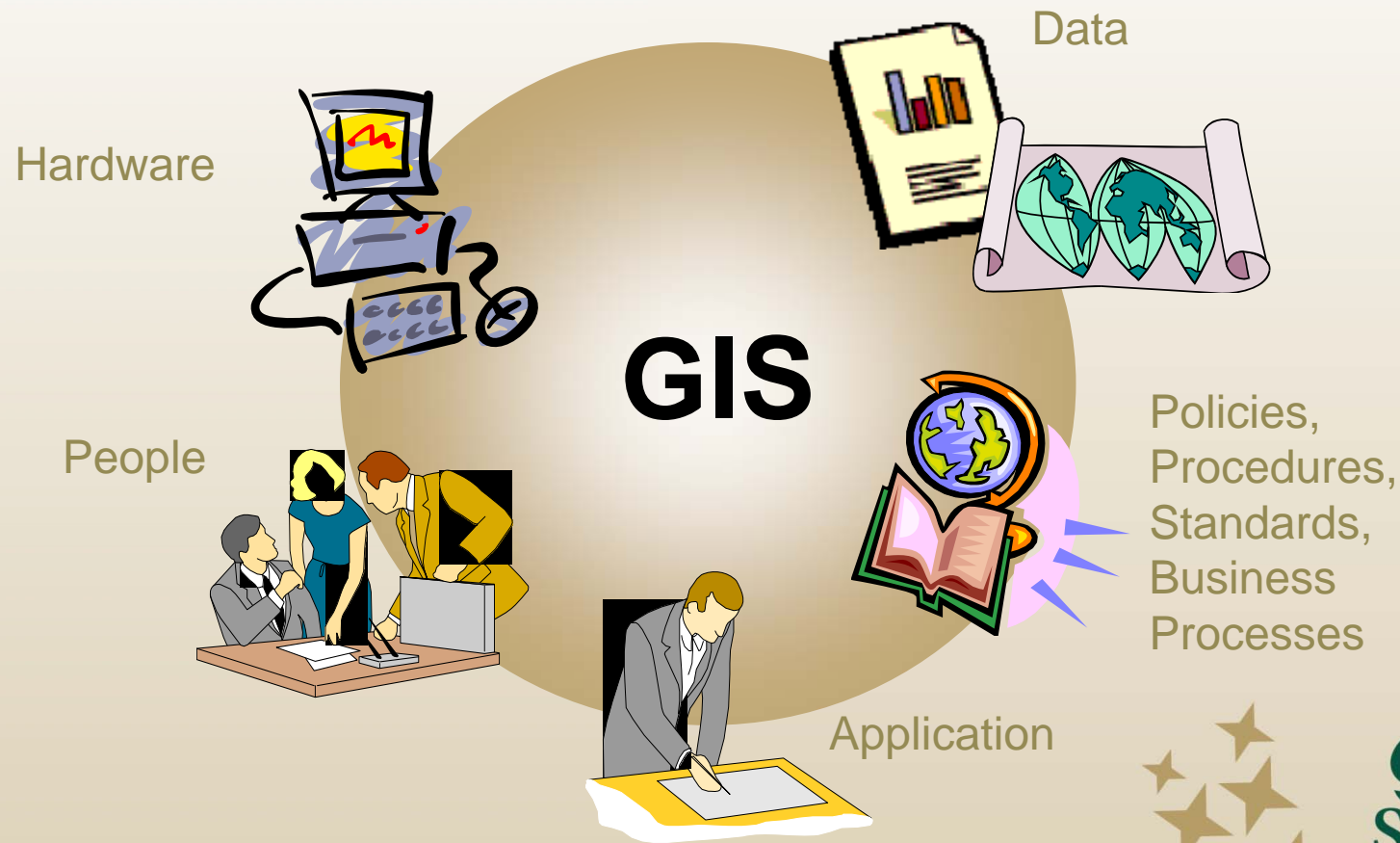


CorporateGIS

moving forward

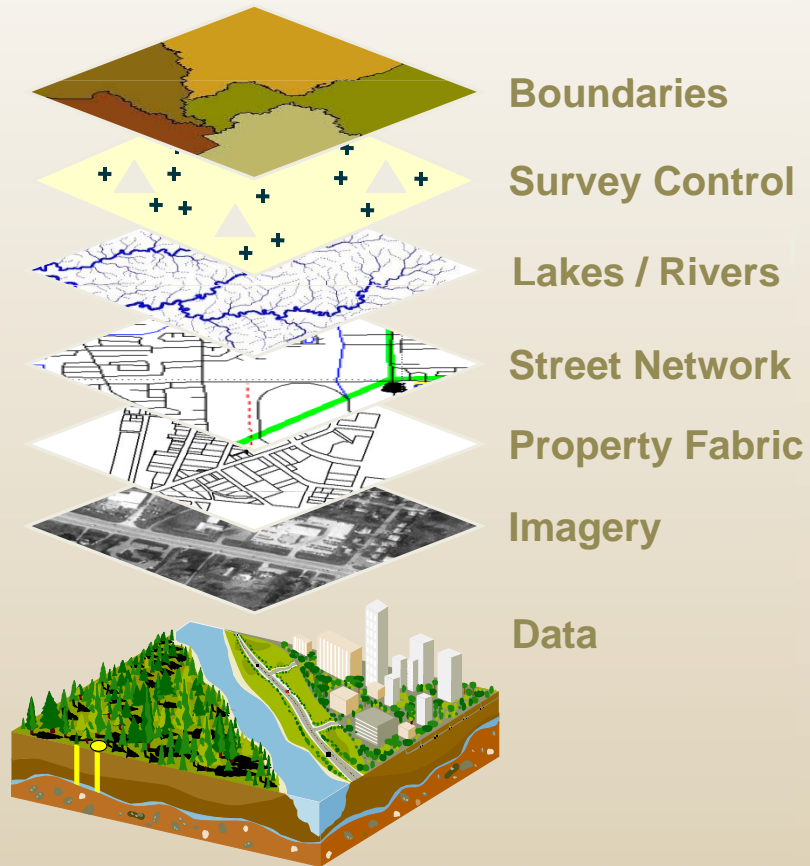
- Date: October 14th, 2008
- Presented by: Doug Nadorozny

What is GIS?



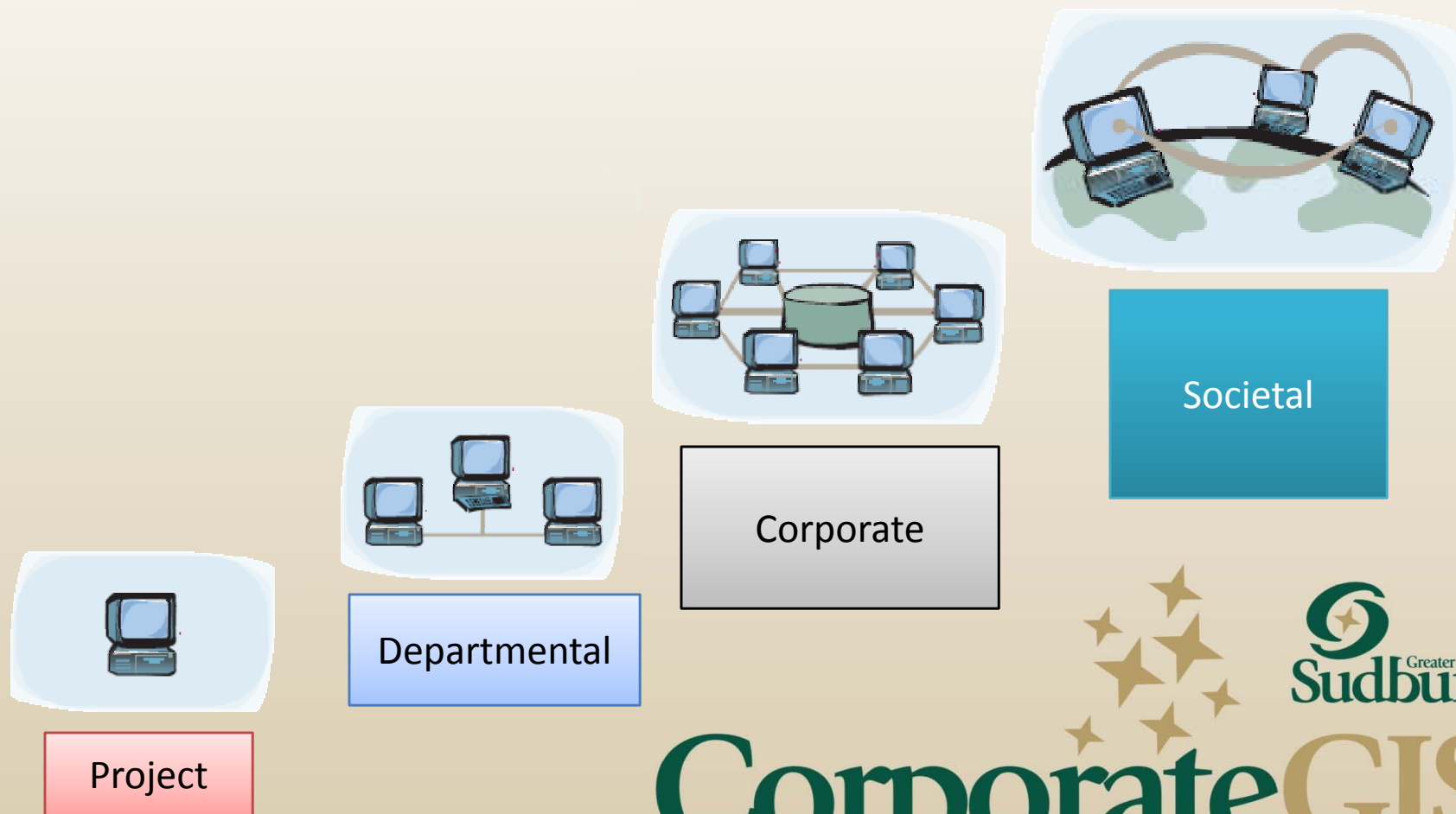
 **CorporateGIS**
moving forward

Key GIS Inputs



- 80% of data used by City is linked to location
 - 60,000+ assessment parcels
 - 58,000+ addresses
- Estimated 800 million data records linked to location

Evolving GIS Strategy



 **CorporateGIS**
moving forward

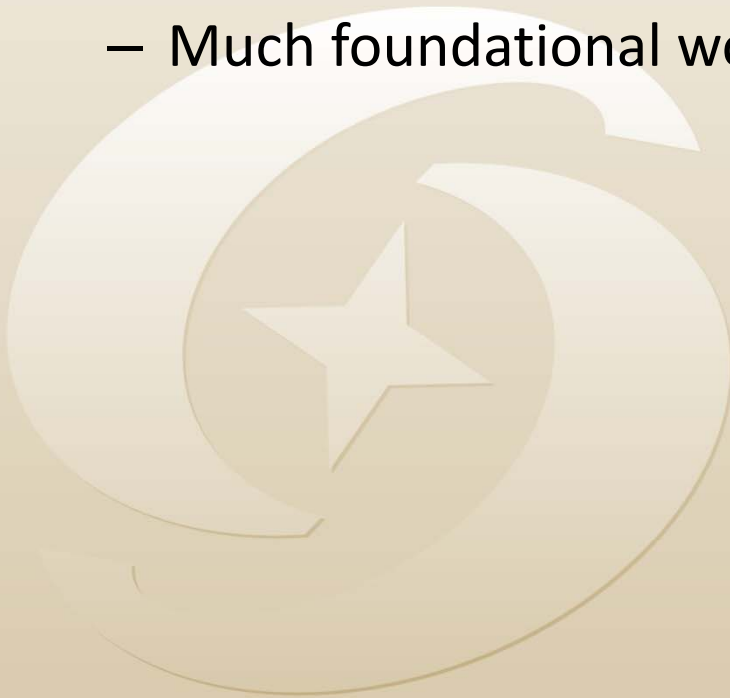
A GIS Strategy

- CAO tasked GM of Growth and Development with challenge of developing a Strategy for the development of a Corporate GIS
- Key Components of Strategy
 - Establish GIS business applications to assist staff and citizens
 - Focus on priorities with greatest corporate return
 - 3 Year Work Plan



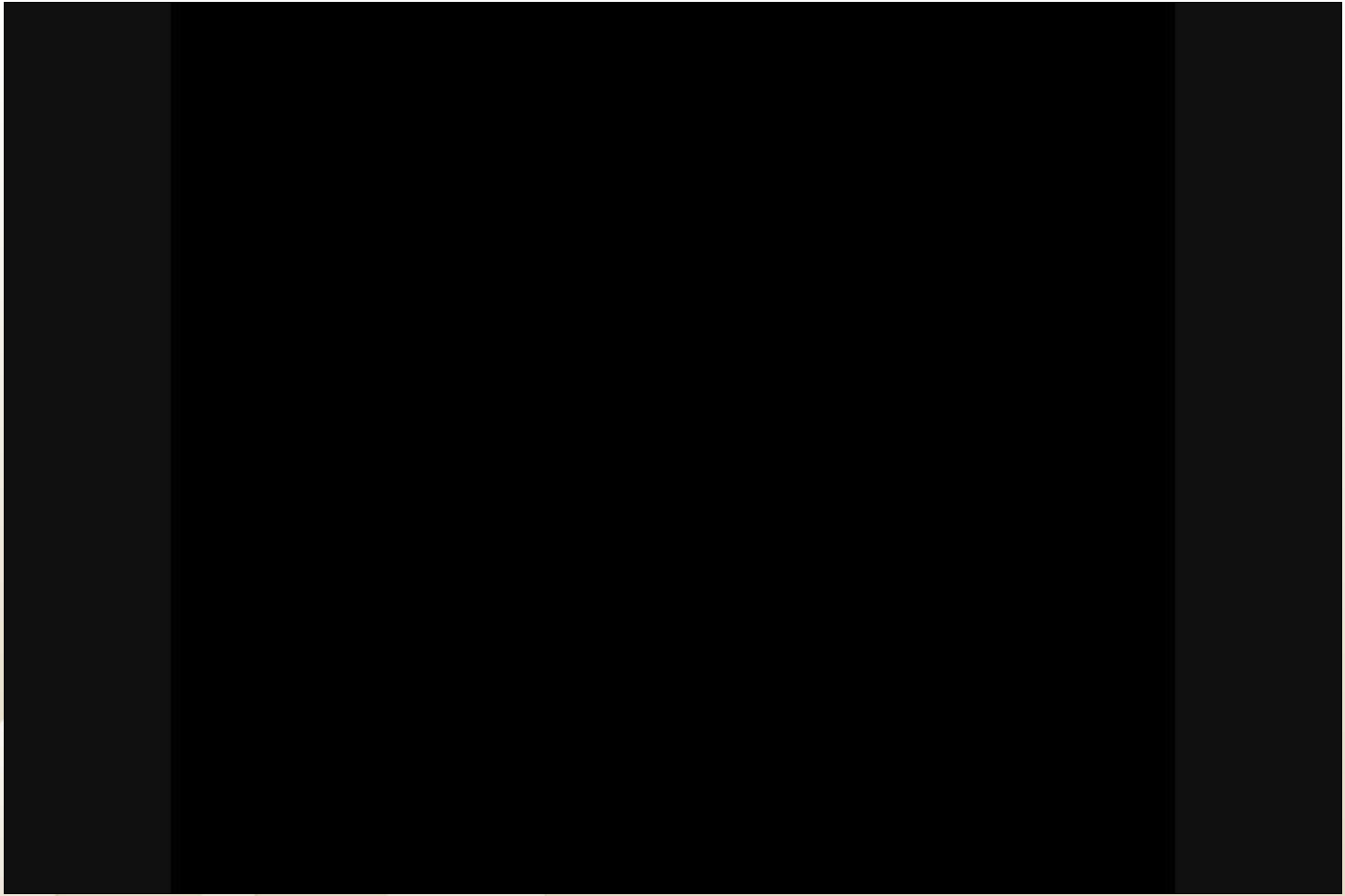
GIS Strategy

- Multi-departmental effort
- Presentation represents a snapshot of the comprehensive strategy
- 3 Year Work Plan is a potential list of projects
 - Much foundational work will occur concurrently



3 Year Work Plan (cont.)

- Infrastructure Projects
 - Infrastructure Asset Database
 - Location of water/wastewater facilities and pipes combined with specs, maintenance, condition data
 - Mobile Technology Applications
 - Handheld devices for instant storage/retrieval of location, condition and maintenance data (culverts, sidewalks, hydrants, etc...)



Kevin Shaw,
Director of Engineering Services



CorporateGIS
moving forward

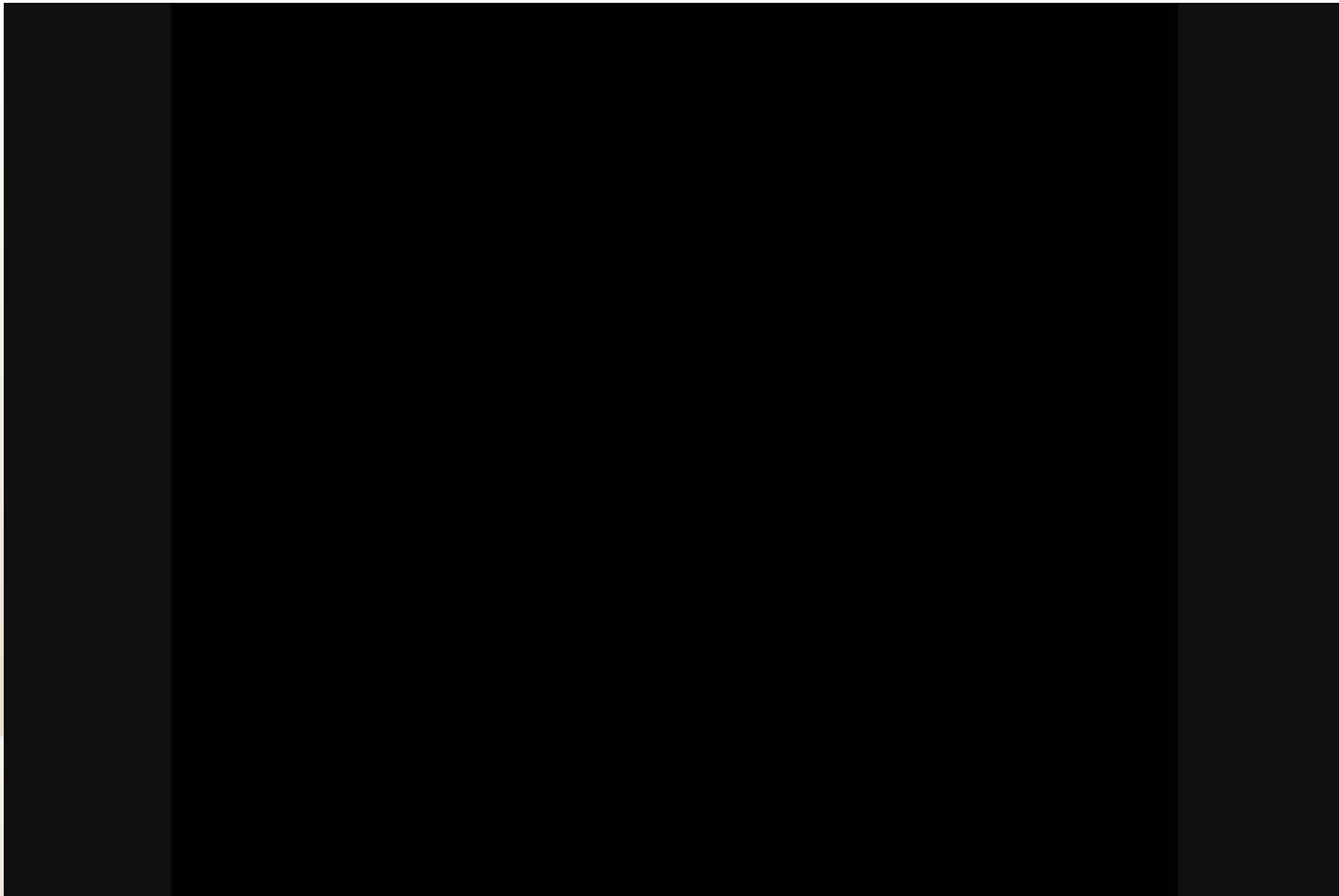
3 Year Work Plan (cont.)

- Growth & Development priorities include:
 - Transit Route Review and Route Optimization
 - Link fare box data to GIS data sets
 - Identify potential route revisions
 - Zoning
 - Will link property zoning to land parcel data
 - Industrial Land Strategy
 - Spatial analysis of available land, transportation routes, infrastructure, population

3 Year Work Plan (cont.)

- Emergency Services projects:
 - Accurate information required for Emergency Preparedness and Emergency Operations Centre
 - Evacuation routes
 - Inventory of gas pipelines, hazardous material storage, location of vulnerable populations, etc...





Tim Beadman,
Chief of Emergency Services



CorporateGIS
moving forward

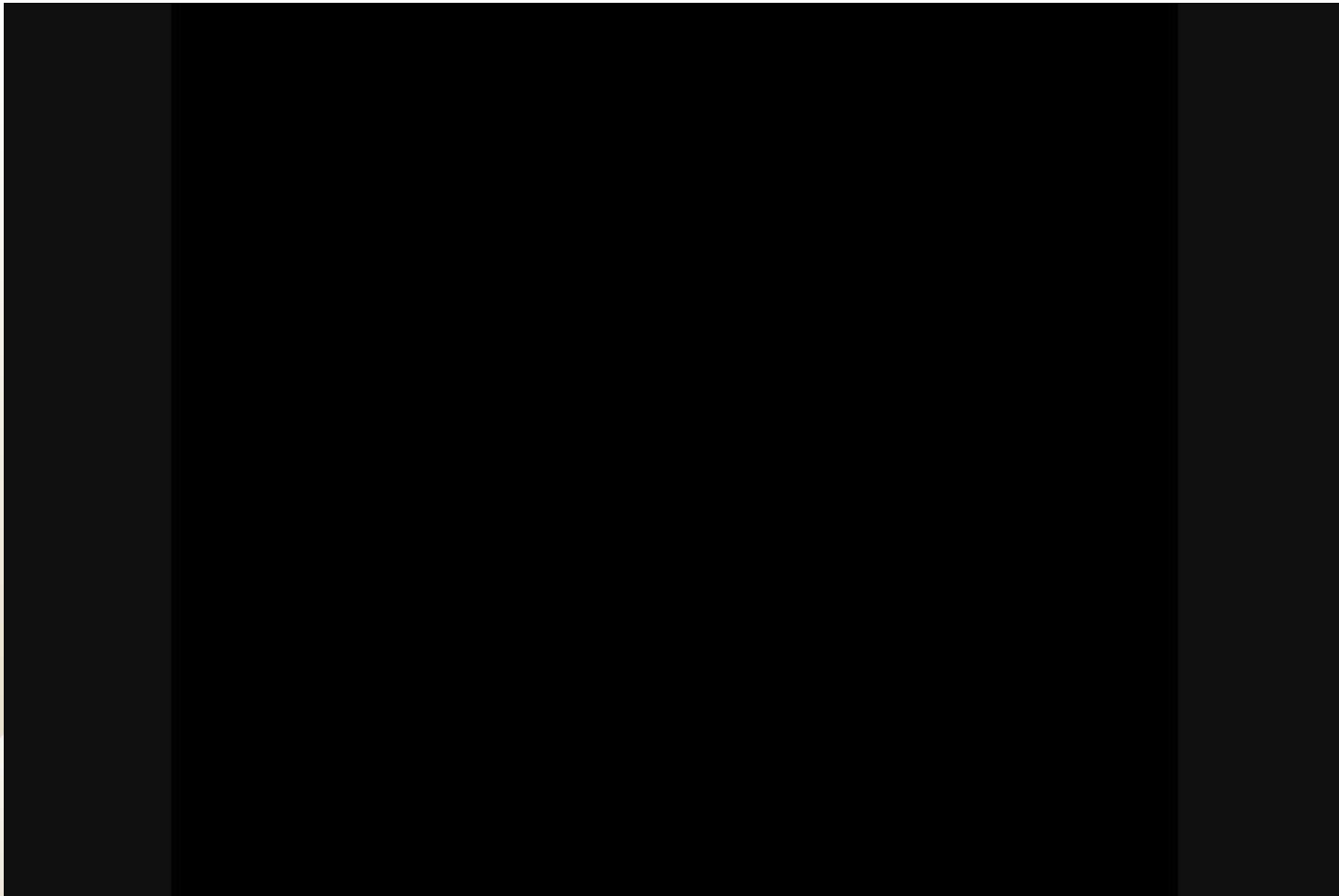
3 Year Work Plan (cont.)

- Community Development projects include:
 - ARC/311
 - Citizen Service Centres – quicker access to more information
 - Inventories of facilities
 - Parks & Recreation facilities
 - Social Housing units
 - Day Care Facilities

IT Requirements

- Many modern business applications require a link to a corporate GIS
 - ARC/311
 - Emergency Operations Centre
- Merged data in the GIS data warehouse would be used by IT staff in software/application development





Ron St-Onge,
Manager of Software and Business
Applications



CorporateGIS
moving forward

First Steps

- Establish interdepartmental transition/steering committee
- Develop data standards, maintenance, custodianship policies
- Build data warehouse
- Undertake GIS needs assessments across corporation
- Implement 3 Year Plan



Resource Requirements to Implement the Strategy

- Funding is required for operating resources including:
 - \$265,000 for 2 new IT positions and 1 new GIS position
 - \$100,000 for hardware (from IT reserve)
 - \$50,000 for mapping (in 2010)
- Budget Options have been prepared for Council's Consideration



Conclusion

- GIS Strategy represents a joint effort among departments
 - Provides an opportunity for more collaboration
- Offers opportunities for efficiencies, increased effectiveness
- It is the new way to handle, access and analyze information
- As we move forward with a Corporate GIS, we are capitalizing on an investment made over many years

