



Greater City of Sudbury presentation

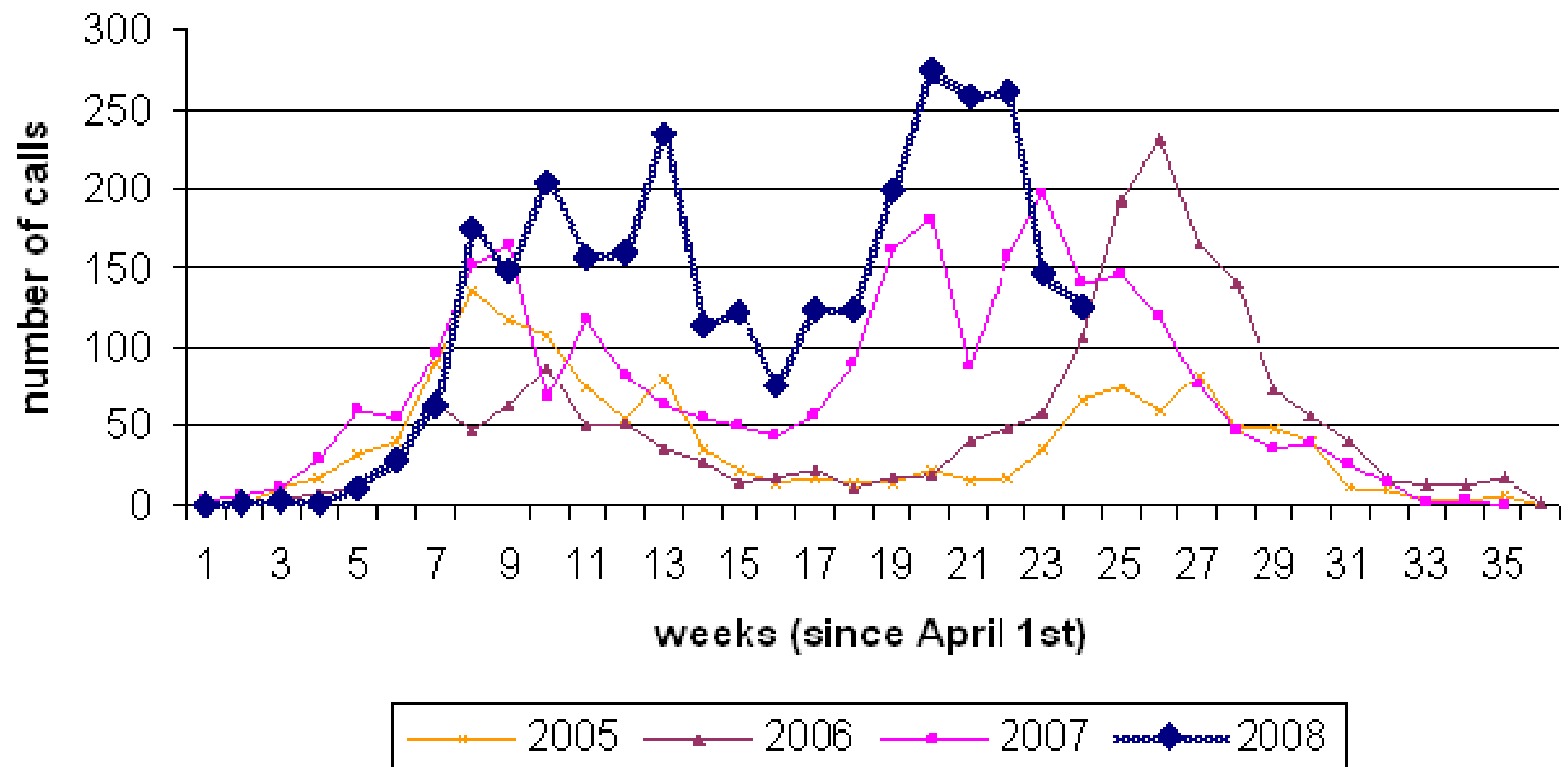
Dealing with our bears

September 2008



Problem Bear Calls by week - Sudbury District

(as of Sep 14th, 2008)



As of September 16th/08

Calls to the Bear Wise reporting line 1-866-514-2327

- Sudbury: 3,079
- North Bay: 221
- Parry Sound: 714
- Timmins: 197
- SSM 1,333
- Province: 8,505



NUMBER OF BEARS TRAPPED AND TRANSPORTED 103

IMMOBILIZED 36

DISPATCHED 20

PROBLEM BLACK BEAR MANAGEMENT

Response Continuum: types of encounters



PROBLEM BLACK BEAR MANAGEMENT

Black bear problems occur...



- when bears associate people with food

PROBLEM BLACK BEAR MANAGEMENT

Black bear attractants:



- household garbage



PROBLEM BLACK BEAR MANAGEMENT

Black bear attractants:



- household garbage
- commercial garbage

PROBLEM BLACK BEAR MANAGEMENT

Black bear attractants:



- household garbage
- commercial garbage
- **bird feeders**



PROBLEM BLACK BEAR MANAGEMENT

Black bear attractants:



- household garbage
- commercial garbage
- bird feeders
- **pet and livestock food**



PROBLEM BLACK BEAR MANAGEMENT

Black bear attractants:

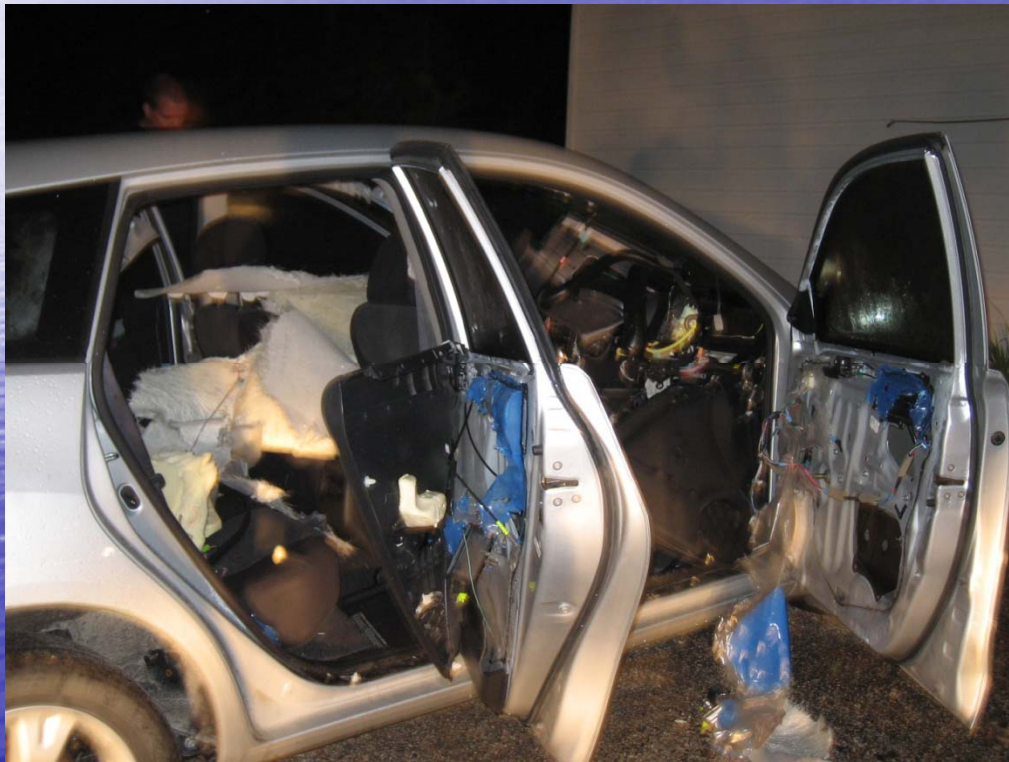


- household garbage
- commercial garbage
- bird feeders
- pet and livestock food
- poorly cleaned BBQs

PROBLEM BLACK BEAR MANAGEMENT

Black bear attractants:

- food items
(left in vehicles)



PROBLEM BLACK BEAR MANAGEMENT

Black bear attractants:



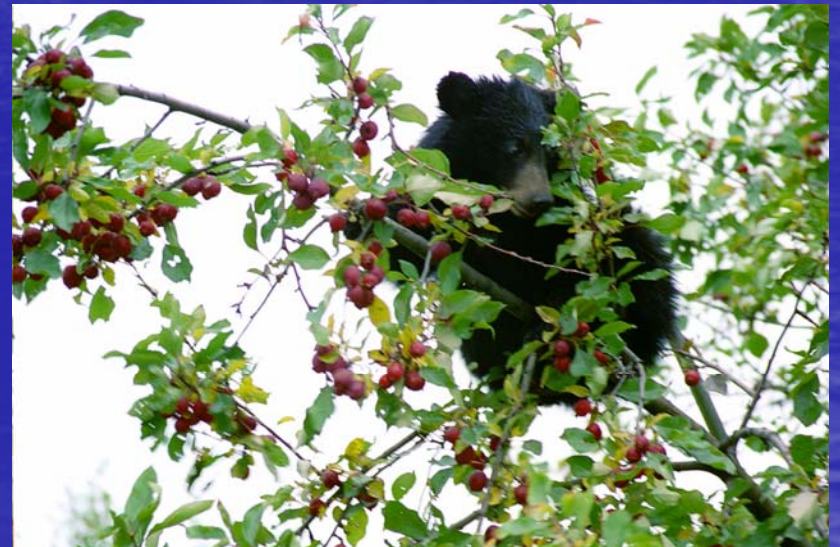
- **compost bins**
 - **sweets**
 - **meat scraps**

PROBLEM BLACK BEAR MANAGEMENT

Black bear attractants:



- compost bins
 - sweets
 - meat scraps
- fruit trees



PROBLEM BLACK BEAR MANAGEMENT

Black bear attractants:



- compost bins
 - sweets
 - meat scraps
- fruit trees
- **garden produce**



PROBLEM BLACK BEAR MANAGEMENT

Black bear attractants:



- compost bins
 - sweets
 - meat scraps
- fruit trees
- garden produce
- **landfill sites**

PROBLEM BLACK BEAR MANAGEMENT

Black bear attractants:



- compost bins
 - sweets
 - meat scraps
- fruit trees
- garden produce
- landfill sites
 - transfer stations















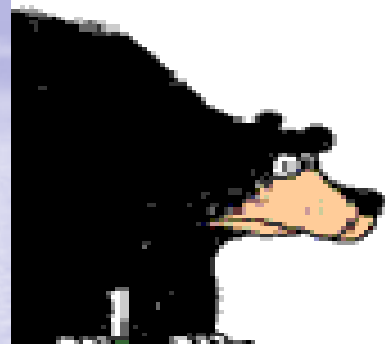




PIONEER MANOR CALL OUT AUGUST 2008

gibbleguts.com

gibbleguts.com



LOOK GEORGE,
A BEAR! ISN'T
HE CUTE.

ZOO



LOOK GEORGE,
A BEAR! CALL A
WILDLIFE OFFICER
AND HAVE HIM SHOT!

PROBLEM BLACK BEAR MANAGEMENT

Why manage problem bears?



- Property and safety concerns

PROBLEM BLACK BEAR MANAGEMENT

Human - Bear attacks: the facts

- How dangerous are black bears to people?
 - during the 1900s, there were 46 recorded black bear-caused human fatalities in North America, 9 of those occurred in Ontario (6 events)
 - approx. 0.5 persons / year
 - from 2000 to June of 2008 there have been 15 additional fatalities (1 in Ontario)
 - approx. 2.0 persons / year

PROBLEM BLACK BEAR MANAGEMENT

Human - **Bear attacks: the facts**

- How dangerous are black bears to people?
 - **Perspective:**
 - **6 to 12 persons / year killed by lightning (in Canada)**
 - **19 persons / year killed by dogs (in N. America)**
 - **550 persons murdered / year in Canada (Statistics Canada)**

PROBLEM BLACK BEAR MANAGEMENT

Bear facts: bears are large, powerful animals:

- **adult males**
 - can weigh 120-280 kg (250-600 lb)
 - attain full size at about 7-8 years of age, and sexual maturity at about 5 years
- **adult females**
 - can weigh 45 - 182 kg (100-400 lb)
 - attain full size at about 5 years of age, and first give birth at 6 years of age
- **black bears may live for up to 20–25 years, but on average 18 years in the wild**

PROBLEM BLACK BEAR MANAGEMENT

Bear facts: bears have excellent senses, they

- **have color vision**
 - **the ability to see colors probably helps them find food**
- **hear a broader frequency range than humans with greater sensitivity**
- **have a keen sense of smell**
 - **their olfactory area is approximately 100 times that of humans**

PROBLEM BLACK BEAR MANAGEMENT

Black bears:



- can nearly double their weight from July when berries ripen until fall when they hibernate
 - availability of food influences when animals enter their dens

PROBLEM BLACK BEAR MANAGEMENT

Prevention: Promote community action

- **Municipal bylaws can play a significant role in reducing the potential for conflict between bears and people**

Example:

- **curbside restrictions**
 - **prohibit curbside garbage before the morning of pick-up**
 - **mandatory bear-resistant containers**

PROBLEM BLACK BEAR MANAGEMENT

Prevention: Landfill sites

- Municipal landfills can be designed and operated so that the public and “dump bears” do not come into conflict



Prevention: Bear-resistant containers



- e.g.,

➤ **www.mcclintockmetal.com**

 **www.vquip.com**

 **www.wm.com**

PROBLEM BLACK BEAR MANAGEMENT

Prevention: Bear-resistant containers (cont.)

- practical deterrents for communal waste stations, grocery stores, restaurants, etc.

e.g.,

- www.haulall.com
- www.mcclintockmetal.com
- www.vquip.com
- www.wm.com



Sudbury District Bear Wise Coverage

3 full time bear techs

1 senior fish and wildlife technician

1 area biologist

8 additional staff certified by bear wise

Resources of the Northeast Region



2 dedicated bear wise trucks 14 traps full immobilization capabilities on a 24 hour basis during bear season

PROBLEM BLACK BEAR MANAGEMENT

Resource info:

- various fact sheets + eBook – available at MNR offices and on-line



BEAR WISE

Be Bear Wise:
Admire them. Respect them.
But please, don't feed them.

You may not even know you're doing it. Simply by leaving pet food out at night, leaving food residue on your barbecue grill, or especially if your household garbage is stored in easy to open bags or in poorly sealed containers, you could be inviting bears to forage for leftovers.

In an immediate emergency call your local police or 911. To report bear problems call:

1 866 514-2327
(1 866 514-BEAR)
TTY 705 945-7641

For more information, visit our website:
bears.mnr.gov.on.ca

What you can do:

- Put garbage out on the morning of garbage day, and not the night before
- Do not leave pet food outdoors
- Thoroughly clean outdoor barbecue grills after use
- Fill bird feeders only through the winter months
- Do not put meat, fish or sweet food (including fruit) in your compost
- Keep meat scraps in the freezer until garbage day
- Pick all ripe fruit off trees, and remove vegetables and fallen fruit from the ground
- Use electric fencing to protect valuable trees, orchards, vegetable and berry patches



Ontario

MINISTRY OF NATURAL RESOURCES



Bear Wise

ABOUT THE MINISTRY | PROGRAMS & SERVICES | PUBLICATIONS | NEWSROOM | FAQ | JOBS | CONTACT US

Home > Bear Wise

Search

BEAR WISE

The Ministry of Natural Resources is committed to reducing preventable causes of human-bear conflict in Ontario. The Bear Wise Program teaches people about black bears as well as things they must do to keep bears away from urban and semi-urban areas. We work with community leaders to establish local prevention programs. We offer many education and awareness products including a website. We provide a bear information and reporting line. We work in partnership with police to respond to human-bear incidents.

NEW!
Black Bear Ecology - Teacher Guides

With a focus on the fascinating world of black bears, this program provides teachers with a classroom ready resource. [More](#)

Be Bear Wise - What You Can Do

You can discourage black bears from coming onto your property or into your community. Know what attracts bears, and take steps to eliminate or control those items.

Keep bears away by removing attractants. It doesn't take a lot of time and it doesn't cost a lot of money. Get involved. Here's what you can do:

- Learn about black bears and know what attracts them
- Keep your property clean and free from things known to attract bears
- Feed birds only during the winter
- Be extra careful with how you store and dispose of your garbage

* BearWise is a web-enabled bear protection program.

IN AN IMMEDIATE EMERGENCY:
contact your local police force or dial 911

TO REPORT BEAR PROBLEMS: contact the Bear Reporting Line at:
1-866-514-BEAR (2327) (TTY) 705 945-7641

BEARS CAN BE DANGEROUS

RELATED LINKS

- [Fast Facts - Keep bears out of your neighbourhood.](#)

Questions
?

